

[Find more details in our online catalogue](#)



Technical parameters

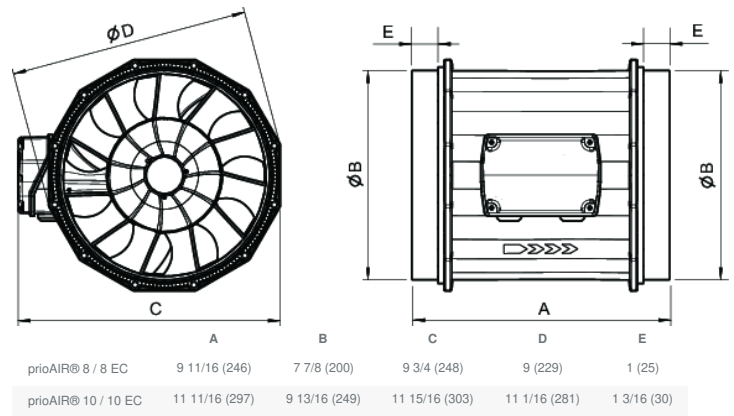
Nominal data	
Voltage (nominal)	120 V
Frequency	60 Hz
Phases	1~
Input power	164 W
Input current	2.11 A
Impeller speed	2,629 rpm
Air flow	max 1,237 cfm
Temperature of transported air	max 131 °F
Protection/Classification	
Enclosure class, motor	IP44
Insulation class	B
Dimensions and weights	
Duct dimension; Circular, inlet	10 in.
Duct dimension; Circular, inlet	10 in.
Duct dimension; Circular, outlet	10 in.
Weight	9.4 lb
Optional	
Duct connection type	Circular
Color name, casing	Black
Motor type	EC
Material	Plastic

Performances

CFM Table

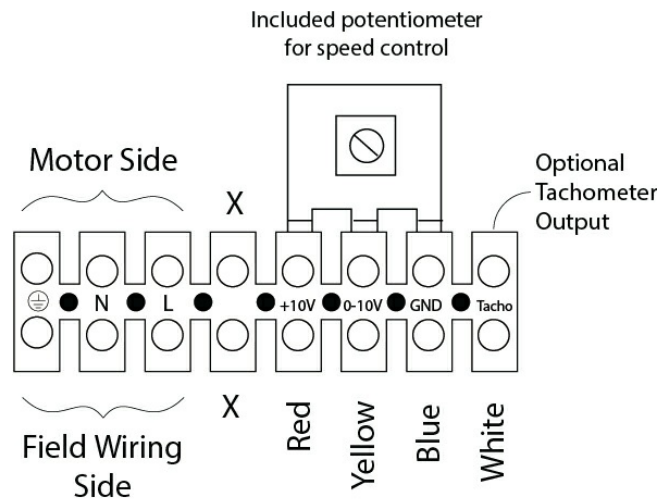
Model	0.0" Ps	0.2" Ps					
prioAIR® 6 EC	443	418	387	352	313	261	-
prioAIR® 8 EC	791	745	702	656	604	534	185
prioAIR® 10 EC	1237	1156	1079	997	900	769	118

Dimensions



All dimension in inches (mm).

Wiring

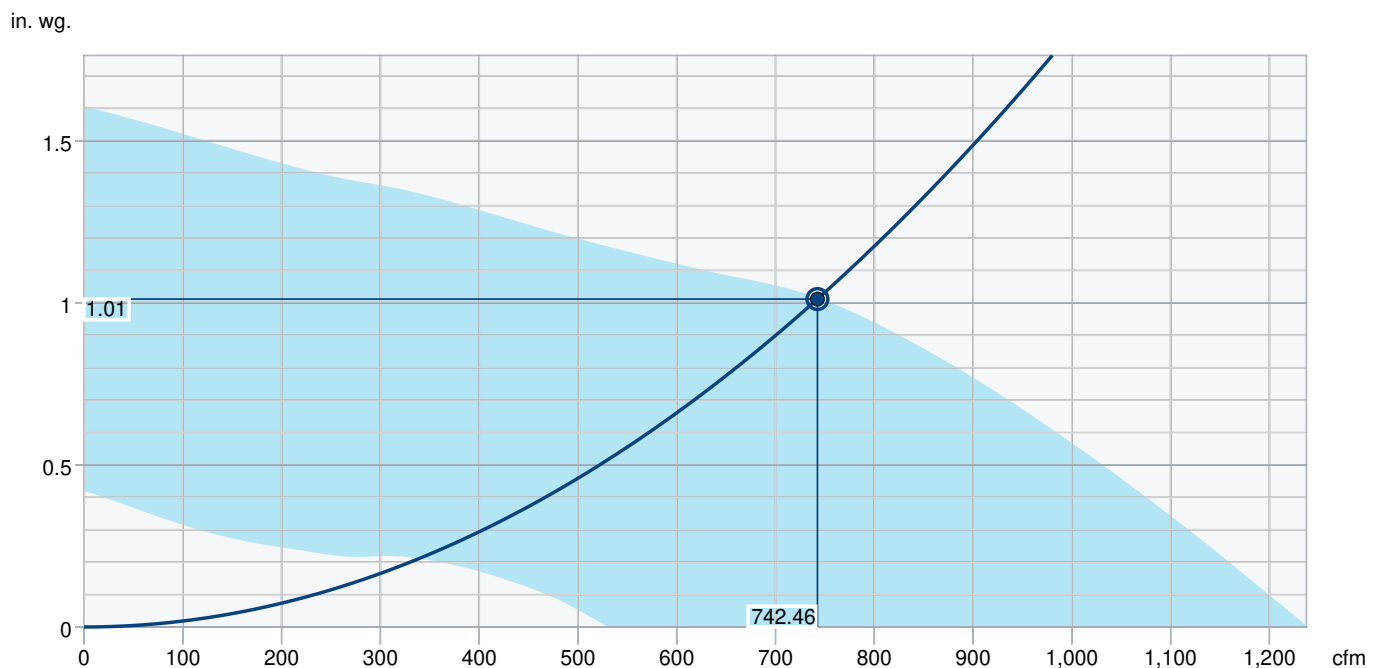


(Motor Side)

Factory Motor Wiring(For reference only)	Terminal Marking	Field marking (to be completed by installer)
Color		Function
Brown	L	Power supply 120VAC, 50/60Hz
Blue	N	Neutral Conductor
Green/Yellow	PE	Protective Conductor
Red	+10V	Voltage Output 10V/1.1 mA, Electrically Isolated
Yellow	10V / PWM	Controller Input 0..10V or PWM, Electrically Isolated
Blue	GND	GND- Connection to the Controller Interface
White	Tacho	Speed Output: Open Controller, 1 Impulse per revolution, Electrically Isolated Isink_max=10mA

Control Option Wiring Diagrams can be found under the DOCUMENTS tab.

Performance curve



Hydraulic data										
Required air flow		742 cfm								
Required static pressure		1.01 in. wg.								
Working air flow		742 cfm								
Working static pressure		1.01 in. wg.								
Air density		0.075 lb/ft³								
Power		164 W								
Fan control - RPM		2,674 rpm								
Current		2.10 A								
Airflow efficiency		4.5 cfm/W								
Control voltage		10.0 V								
Supply voltage		120 V								
Sound power level		63	125	250	500	1k	2k	4k	8k	Total
Inlet	dB(A)	53	66	68	63	69	68	63	53	75

Accessories

FML 10 Metal Hood Supply Air (45149)	FC 10 Mounting Clamps (2 pcs) (411122)
FGR 10HV Filter Cassette (98005)	IR 10 Iris Damper (411238)
LD 10 Silencer (411286)	EC-10V Speed control (498148)

Documents

E1474 prioAIR® EN
484065 prioAIR® IOM
prioAIR® EC CSI Specification
Control Option for prioAIR® 6-10 EC