



Not to be used in above-the-floor rough-in.

Model 500-TQ

**Same as 500 Trip Lever except
Quick Adjust® has scale label on the
overflow pipe.
For most tubs 14"-16" high**



See price list for complete item numbers and available options.

When ordering, please specify complete item number and any applicable option codes.



For More Information Contact:
WATCO Manufacturing Company
1220 South Powell Road
Independence, MO 64057-2724
Ph. 816-796-3900 • FAX 816-796-0875
www.watcomfg.com

Tubular Plastic

Trip Lever 500-TL

Trip Lever 500-TQ QUICK ADJUST®

For most tubs 14" - 16" high

Trip Lever 550-TL

For most tubs up to 24" high

Durable 1.5" Tubular Plastic PVC or ABS

SPECIFICATIONS

FEATURES:

- Designed for heavy-duty use in hotels, motels, and rental property.
- Metal strainer body for cast iron or plastic tubs.
- Retainer plate for overflow elbow.

APPROVALS:

- Manufactured in compliance with ASTM F 409-2002 and NSF/ANSI 14-2007.
- Manufactured in compliance with CSA Standard B181.1 and CSA Standard B181.2

OPERATION:

- Move trip lever, located on overflow plate, up to close drain and down to open drain.

THREAD SIZE (Strainer Body and Drain Ell):

- 1½" – 11½ NPSM (Coarse Thread)
- 1.865" Major Diameter (outside thread diameter)
- 11.5 threads per inch

PIPING: ☐ PVC ☐ ABS

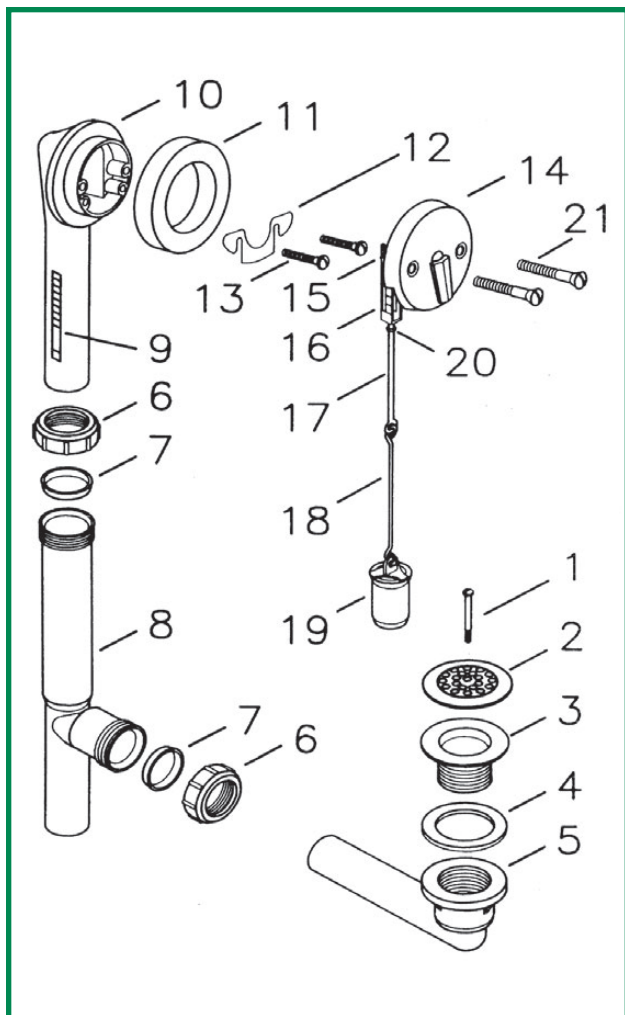
OPTIONS:

- Removable tailpiece and "O" Ring Seal (Code "RT-1")
- Condensate Drain (Code "CD")
- Brass Drop Cylinder (Code "BD")
- Special lengths available:
 - Overflow extension (add code "EXlength")
example: EX6
 - Drain extension (add code "Dlength") example: D4

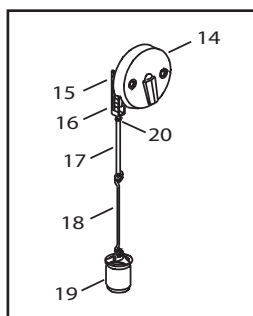
FINISHES:

- ☐ CP - Chrome Plated
- ☐ BN - Brushed Nickel
- ☐ BO - Bone
- ☐ BS - Biscuit
- ☐ BZ - Oil-Rubbed Bronze
- ☐ CB - Chrome Brushed
- ☐ NP - Nickel Polished
- ☐ PB - Polished Brass
- ☐ PN - Pearl Nickel
- ☐ WH - White
- ☐ WI - Wrought Iron

500-TL/550-TL and 500-TQ Series Parts List



Item	Part #	Description
1.	01040CP.....	Strainer Cover Plate Screw
2.	01006CP.....	Strainer Cover Plate
3.	11495CP.....	Trip Lever zinc Strainer Body, 1 1/2" - 11.5
4.	10696.....	Drain Ell Washer
5.	11028.....	Drain Ell Tube, Tubular ABS, 1 1/2" - 11.5
	14028.....	Drain Ell Tube, Tubular PVC, 1 1/2" - 11.5
6.	11580	Slip Joint Nut, ABS
	11581	Slip Joint Nut, PVC
7.	11583.....	Slip Joint Polywasher
8.	11000	Tee, Tubular ABS
	14000.....	Tee, Tubular PVC
9.	TQ only.....	QUICK ADJUST® label
10.	11003	Overflow Elbow, Tubular ABS
	14003.....	Overflow Elbow, Tubular PVC
11.	10675	Overflow Ell Washer, Foam
12.	11530	Retainer Plate
13.	11540.....	Retainer Plate Screw
14.	10700CP.....	TL Faceplate Assembly
15.	10930.....	Cotter Pin
16.	10950.....	TL Quick Adjust "Q" Clevis
17.	10953.....	Top Linkage Eye Bolt
18.	10954.....	5.25" Double-Loop Wire
19.	11005.....	Drop Cylinder for ABS
	14005.....	Drop Cylinder for PVC
20.	10952.....	TL Linkage Nut
21.	01024CP.....	Screw, Overflow Plate, 2.25"



10770-(PVC or ABS)-___

Trip Lever faceplate assembly replacement for tubular plastic trip lever bath wastes.

Indicate PVC or ABS and finish desired.

Roughing-In Dimensions:

