

Not Shown: Half Kits (No Tee or Pipe)

Model 901: Stoppers, Knobs, Strainer Bodies determined by type of tub closure, i.e., Lift and Turn, etc.

Model 921-PP: ABS Stopper, Plastic Knob, Brass Strainer Body, Chrome PP only

Model 951-PP: ABS Stopper, Plastic Knob, Zinc Strainer Body, Chrome PP only

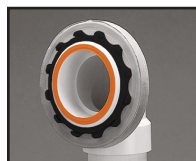


ADA

PRESFLO® (PF)
Foot Actuated (FA) only



Includes built-in
test membrane



Easily remove
membrane after test



Snap-on
overflow plate.
No screws

See price list for complete item numbers and available options.

When ordering, please specify complete item number and any applicable option codes.



For More Information Contact:
WATCO Manufacturing Company
1220 South Powell Road
Independence, MO 64057-2724
Ph. 816-796-3900 • FAX 816-796-0875
www.watcomfg.com

Schedule 40

Innovator® 900/901

Stoppers, Knobs, and Bodies determined by tub closure selected

Innovator® 920/921

ABS Plastic Stopper, Plastic Knob, Brass Body, Chrome PP only

Innovator® 951 Half Kit

ABS Plastic Stopper, Plastic Knob, Zinc Body, Chrome PP only

Sturdy 1.5" Schedule 40 PVC or ABS Solvent Weld Assembly

SPECIFICATIONS

FEATURES:

- Eliminates all screws
- Eliminates need for separate overflow test plug
- Eliminates leaks due to loose overflow attachment
- Eliminates dual inventory of one- and two-hole overflow plates

APPROVALS (900/901 models):

- Manufactured in compliance with ASME A112.18.2-2005/ CSA B125.2-2005.

PATENTS (Innovator®):

- U.S. Pat. Numbers 5,890,241; 6,637,050; 6,675,406; 7,127,752; 8,302,220; 8,231,970; 8,584,272; 9,200,436 and Patents Pending
- Canadian Patent Number 2,437,448
- Mexican Patent Numbers PA/a/2003007344; PA/a/2005002784

THREADS (Strainer Body and Drain Elbow):

- 1 1/2" – 1 1/2" NPSM (Coarse Thread)
- 1.865" Major Diameter (outside thread diameter)
- 11.5 threads per inch

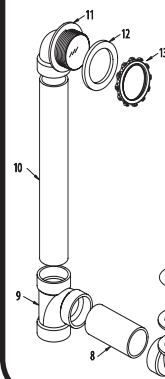
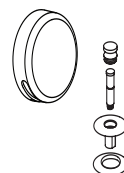
PIPING: ☐ PVC ☐ ABS

ROUGH-IN (RI's) and STOPPER/FACEPLATE (SF's)

STOPPER/FACEPLATE'S

(example: 900-PPSF-0-CP)

Overflow plate and
stopper assembly

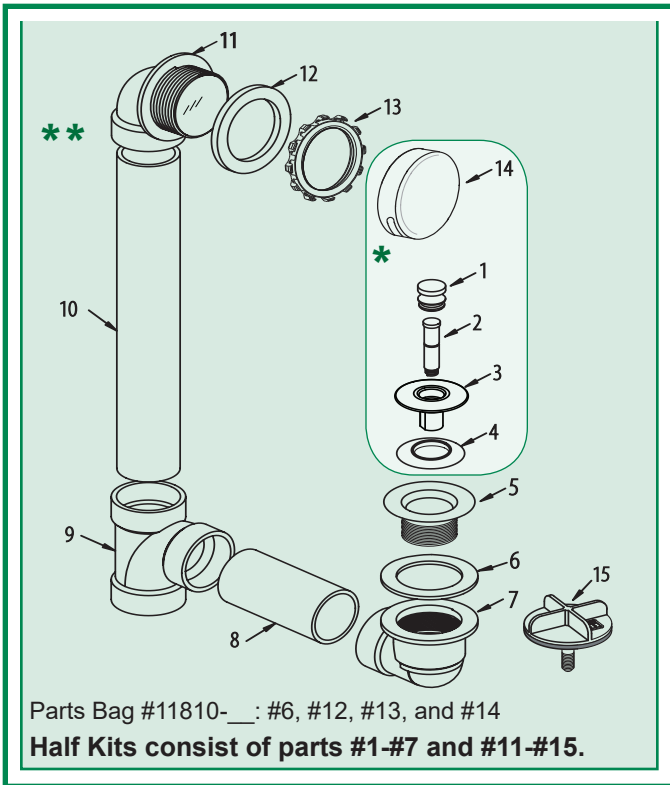


ROUGH-IN'S

(example: 900-PPRI-PVC-CP)

All parts, including strainer body,
except the overflow plate and
stopper assembly

900/901 Series Parts List



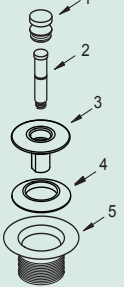
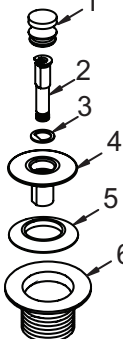
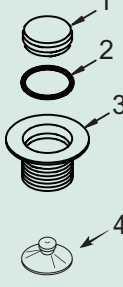
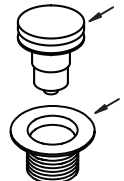
Item Part # Description

1. 01010CP.....PUSH PULL® Knob, Brass
2. 11510Friction Ring (11505) and Post (11532)
3. 01013CP.....Stopper, Brass
4. 11507Seal, 1 1/16" dia.
5. 01016CP.....Strainer Body, 1.865" - 11.5 - 1.25"
6. 10696Drain Ell Washer, 1.5" gray
7. 11008.....Drain Ell, Schedule 40, ABS
14008Drain Ell, Schedule 40, PVC
8. 11605.....Pipe, Schedule 40, ABS, 1.5" x 4.625"
11606.....Pipe, Schedule 40, PVC, 1.5" x 4.625"
9. 14011.....Sanitary Tee, Schedule 40, ABS
14010.....Sanitary Tee, Schedule 40, PVC
10. 11605.....Pipe, Schedule 40 ABS, 1.5" x 11.75"
11606.....Pipe, Schedule 40 PVC, 1.5" x 11.75"
11. 11020.....Innovator® Overflow Ell, Schedule 40, ABS
14020Innovator® Overflow Ell, Schedule 40, PVC
12. 10675Overflow Ell Washer, Foam
13. 11121Retainer Nut for Innovator®
14. 01004CPOverflow Plate for Innovator®
15. 11575.....Test Plug with O-Ring-type Gasket

* SF: (example: 900-PPSF) Parts #1 thru #4, and #14

** RI: (example: 900-PPRI) Parts #5 thru #13, and #15

OPTIONAL TUB CLOSURES FOR 900/901-SERIES BATH WASTES (PUSH PULL® ALSO SHOWN ABOVE)

900/01 PUSH PULL® Coarse Thread	LIFT & TURN Coarse Thread	PRESFLO® Coarse Thread	FOOT ACTUATED Coarse Thread
 <ol style="list-style-type: none"> 1. 01010CP 01010__* 2. 11510 3. 01013CP 01013__* 4. 11507 5. 01016CP 01016__* 	 <ol style="list-style-type: none"> 1. 01010CP 01010__* 2. 11079 3. 11088 4. 11290CP 01013__* 5. 11507 6. 11492CP 01016__* 	 <ol style="list-style-type: none"> 1. 11145CP 11145__* 2. 11132 3. 11060CP 11060__* 4. 96039: Suction Cup for removing stopper 	 <ol style="list-style-type: none"> 1. 38412CP 38412__* 2. 11492CP 01016__*

U.S. Pat. No. 4,720,877

U.S. Pat. No. 5,758,368

U.S. Pat. No. 4,457,030

*If finish other than Chrome is desired, please use this part number and indicate desired finish.

Finishes Available in the 900/901 Series:

921 PUSH PULL®	951 PUSH PULL®	Tub Closures:	PUSH PULL®	LIFT & TURN	PRESFLO®	FOOT ACT.
1. 11309CP	1. 11309CP	CP - Chrome Plated	●	●	●	●
2. 11510	2. 11510	AB - Antique Brass				
3. 11290CP	3. 11290CP	AP - Aged Pewter	●	●	●	
4. 11507	4. 11507	BB - Brushed Bronze	●	●	●	
5. 01016CP	5. 11492CP	BN - Brushed Nickel	●	●	●	●
		BO - Bone	●	●		
		BS - Biscuit	●	●		
		BZ - Oil-Rubbed Bronze	●	●	●	●
		CB - Chrome Brushed	●	●	●	
		NP - Nickel Polished	●	●	●	●
		PB - Polished Brass	●	●	●	●
		PN - Pearl Nickel	●	●	●	
		WH - White	●	●		
		WI - Wrought Iron	●	●	●	

Roughing-In Dimensions

