



MUSTEE

Elegance ■ Innovation ■ Durability



Shower + Bath ■ Laundry Tubs + Sinks ■ Mop Basins + Washer Pans



We fit your vision.

With dimensions that work with both traditional shapes and modern trends, Mustee fits into your design.



COMPANY PROFILE

In 1932, Emil Lawrence Mustee founded the company with a mission to produce the highest quality water heaters, hot plates, and incinerators.

Today, family owned and operated, third and fourth generations of Mustee's still apply our founder's high standards and passion to everything we do. That's why we've become a category leader in nearly all of our product lines. With the ability to offer a variety of product options, proudly made in the USA, we can fit our customers' vision.



ABOUT US

Welcome! E. L. Mustee & Sons, Inc. manufactures products designed to add luxury, convenience, functionality and greater livability to your home. Here you'll find products that present unique design options whether your plans are for building new or remodeling.



Mustee also offers many quality products for commercial, institutional and industrial applications.

Since 1932, Mustee brand products have stood for the best in quality, design, innovation and durability. We invite you to discover what decades of customers already know about Mustee products...they look great, and last.

E. L. Mustee Sidearm Water Heater (1949)

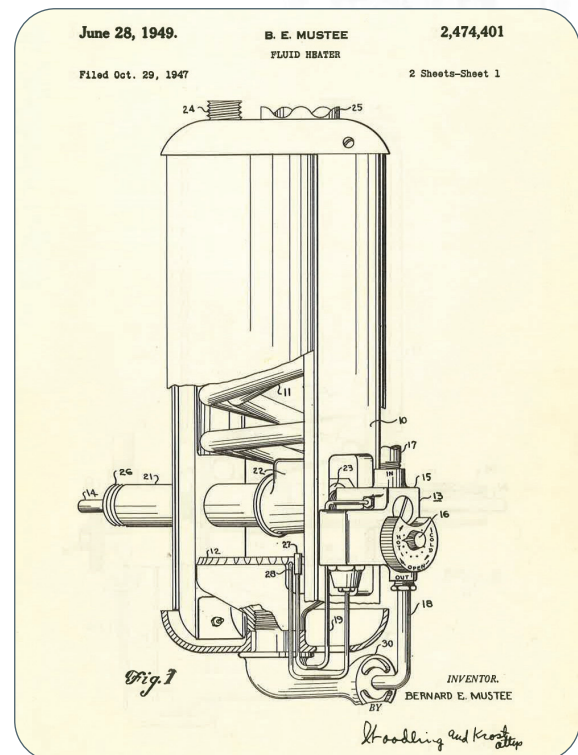


TABLE OF CONTENTS

| | |
|--|-------|
| TOPAZ™ Fiberglass Bathtubs..... | 4-7 |
| TOPAZ™ Fiberglass Bathtub Walls..... | 8-9 |
| VARISTONE™, TOPAZ™, DURAWALL® Bathtub Walls & DURATRIM™ Window Kits..... | 10-13 |
| DURAWALL®, DURABASE® & STYLEMATE® Shower Ensembles..... | 14-19 |
| VARISTONE™ & DURAWALL® Shower Walls..... | 20-21 |
| DURABASE® Shower Floors..... | 22-25 |
| Easy Access Shower Floors..... | 26-27 |
| CareGiver® Grab Bars & Fold-Down Seats..... | 28-29 |
| STYLEMATE® Shower Enclosures..... | 30 |
| UTILATUB® & UTILATWIN® Laundry Tubs and Sinks..... | 31 |
| Laundry/Utility Tubs/Sinks – UTILATUB® & UTILATWIN®..... | 32-41 |
| DURAPAN™ Washer & Water Heater Pans..... | 42-43 |
| Mop Service Basins & Accessories..... | 44-45 |
| DURASTALL® Shower Stalls..... | 46 |
| Warranty..... | 47 |

OUR PRODUCT LINE INCLUDES:

DURAWALL® Shower and Bathtub Walls

DURASTALL® Shower Stalls

TOPAZ™ Bathtubs and Bathtub Walls

DURABASE® Shower Floors

STYLEMATE® Shower Enclosures

UTILATUB® and UTILATWIN Laundry Tubs

VECTOR™ and DURASTONE® Utility Sinks

DURASTONE® Mop Service Basins

DURAPAN™ Washer and Water Heater Pans

CareGiver® Easy-Access Showers, Safety Grab Bars,
and Fold-Down Shower Seats





Fiberglass Bathtubs & 4 Piece Combos



We fit your vision for a beautiful bathtub/shower combination.



T6032 TOPAZ™ Fiberglass Bathtubs – 32" x 60"




Features

- One piece precision molded from Mustee's premium VARISTONE™ fiberglass
- Apron supported by 2 molded brackets with structural bottom and sides
- Ergonomically contoured back with a 40° lumbar slope
- Proprietary finish creates a long lasting finish and scratch-resistant surface
- Slip-resistant bottom
- Suitable for use with all popular finished wall treatments
- Easy to clean

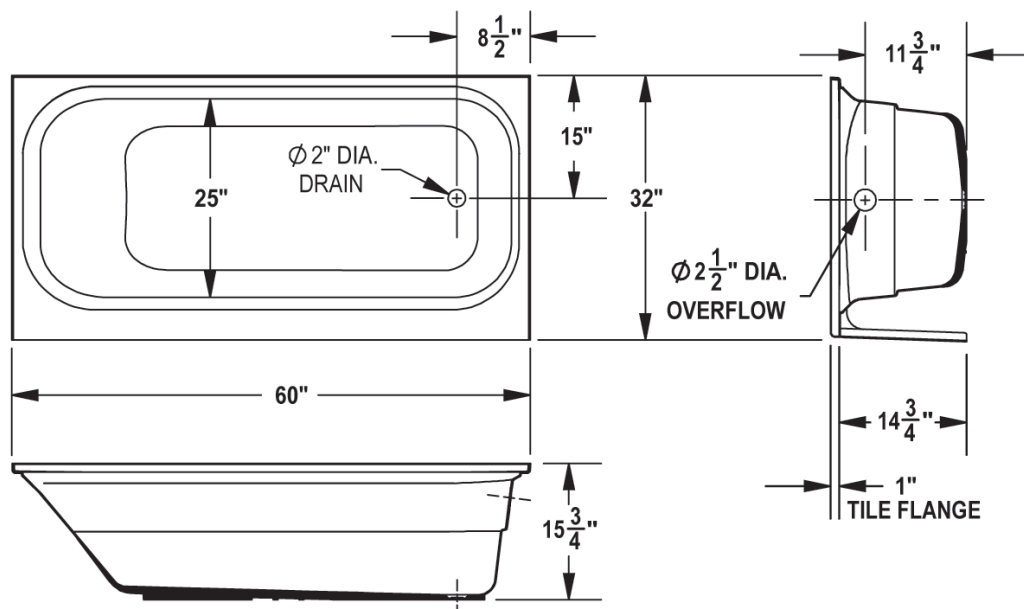
Code Accepted

TOPAZ™ Bathtubs meet or exceed performance requirements:

- International Association of Plumbing and Mechanical Officials (IAPMO®)
- American National Standards Institute (ANSI) – 

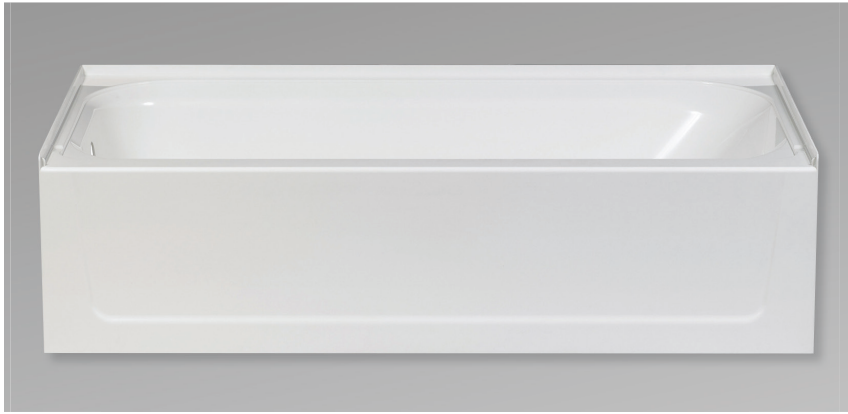


| Model | Color | Description |
|--------|-------|-------------------------------------|
| T6032L | White | 32" x 60" Bathtub, Left hand drain |
| T6032R | White | 32" x 60" Bathtub, Right hand drain |



General: Furnish and install as shown on plans, E. L. Mustee & Sons, Inc. TOPAZ™ Fiberglass Bathtub 32" x 60" right or left-handed Model: _____. Construction shall be molded, reinforced fiberglass using matched metal molds under extreme heat and pressure. Shall meet ANSI Specification Z 124-2022. Color: White. Install in compliance with local codes.

T6030 TOPAZ™ Fiberglass Bathtubs – 30" x 60"




Features

- One piece precision molded from Mustee's premium VARISTONE™ fiberglass
- Apron supported by 2 molded brackets with structural bottom and sides
- Ergonomically contoured back with a 40° lumbar slope
- Proprietary finish creates a long lasting finish and scratch-resistant surface
- Slip-resistant bottom
- Suitable for use with all popular finished wall treatments
- Easy to clean

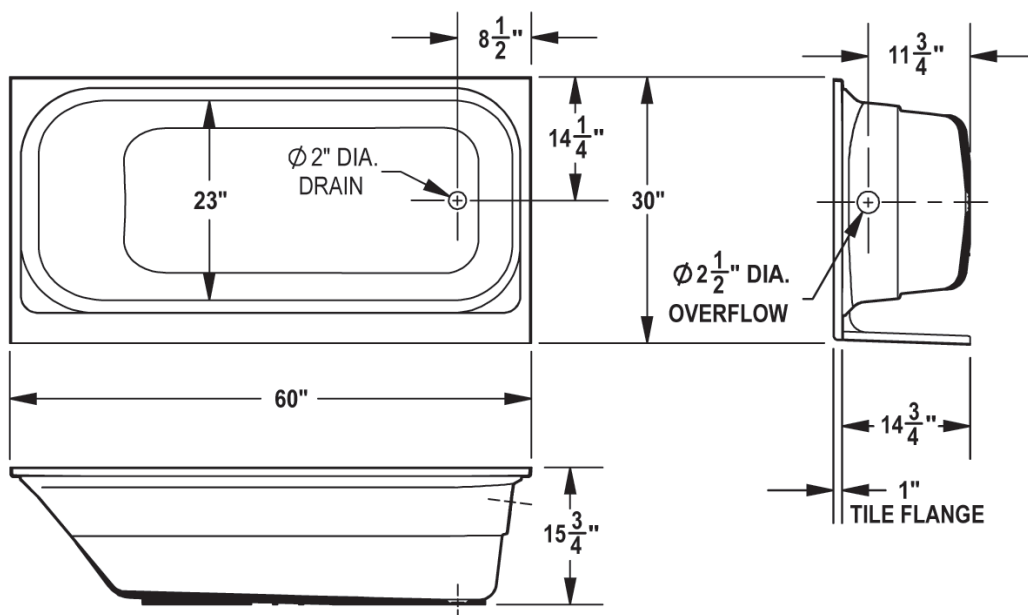


Code Accepted

TOPAZ™ Bathtubs meet or exceed performance requirements:

- International Association of Plumbing and Mechanical Officials (IAPMO®)
- American National Standards Institute (ANSI) –  Specification Z 124-2022

| Model | Color | Description |
|----------|---------|-------------------------------------|
| T6030L | White | 30" x 60" Bathtub, Left hand drain |
| T6030LBN | Bone | 30" x 60" Bathtub, Left hand drain |
| T6030LBT | Biscuit | 30" x 60" Bathtub, Left hand drain |
| T6030R | White | 30" x 60" Bathtub, Right hand drain |
| T6030RBN | Bone | 30" x 60" Bathtub, Right hand drain |
| T6030RBT | Biscuit | 30" x 60" Bathtub, Right hand drain |





General: Furnish and install as shown on plans, E. L. Mustee & Sons, Inc. TOPAZ™ Fiberglass Bathtub 30" x 60" right or left-handed Model: _____. Construction shall be molded, reinforced fiberglass using matched metal molds under extreme heat and pressure. Shall meet ANSI Specification Z 124-2022. Color: _____ (White, Bone, Biscuit). Install in compliance with local codes.

T6030 AFD TOPAZ™ Fiberglass Bathtub – 30" x 60"



Code Accepted

TOPAZ™ Bathtubs meet or exceed performance requirements:

- American Society of Testing and Materials (ASTM) – E-84 
- American National Standards Institute (ANSI) – Specification Z 124-2022 
- CAN/ULC S102-07 Burn and Smoke Test



- Tiling flange barrier rib with recess
- Full apron
- Raised bottom for drain
- Molded supports and bracket

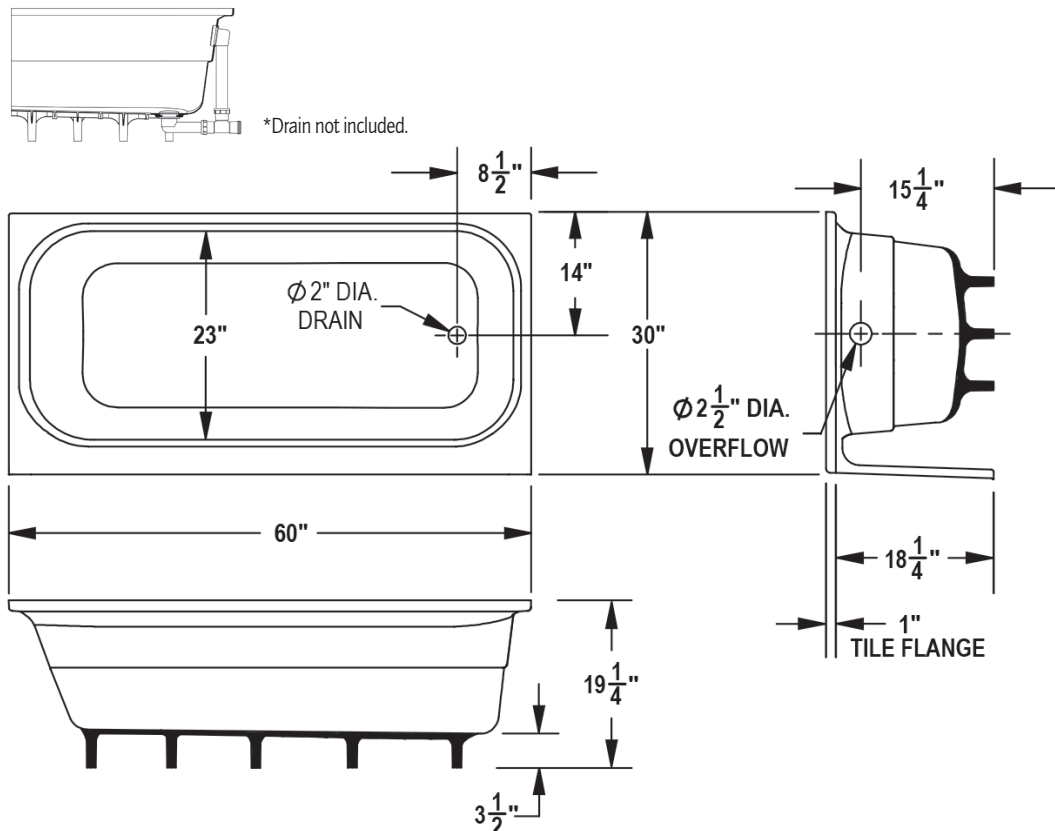
TOPAZ™ premium fiberglass bathtubs with classic design, exceptional features, premium construction are now available for an above the floor drain application.

Ideal for high rise and residential homes with slab floors. Allows the bathtub waste drain to run from underneath the bathtub floor to an existing drain pipe.

Features

- Bottom of the bathtub is raised 3½" by multiple integrated fiberglass molded supports
- Precision molded from Mustee's premium fiberglass
- Full apron supported by 2 brackets
- Contoured back with a 20° lumbar slope for comfort
- Finish creates deep, long lasting shine
- Slip-resistant bottom
- One piece molded, with matched metal molds
- Fits standard 30" x 60" alcove
- Available in right & left hand drain with an 8½" x 14" offset
- Suitable for use with all popular finished wall treatments
- Mold & mildew resistant—easy to clean

| Model | Color | Description |
|------------|-------|-------------------------------------|
| T6030L-AFD | White | 30" x 60" Bathtub, Left hand drain |
| T6030R-AFD | White | 30" x 60" Bathtub, Right hand drain |



General: Furnish and install as shown on plans, E. L. Mustee & Sons, Inc. above floor drain TOPAZ™ Fiberglass Bathtub 30" x 60" right or left-handed Model: _____. Construction shall be molded, reinforced fiberglass using matched metal molds under extreme heat and pressure. The bathtub floor is raised 3½" for above floor tub waste. Shall meet ANSI Specification Z 124-2022. Color: White. Install in compliance with local codes.

TOPAZ™ Premium Fiberglass Tub/Shower 4-Piece Unit – Direct-To-Stud Mounted



Includes three self-draining shelves molded. Stylish tile pattern molded in across the walls.

Features

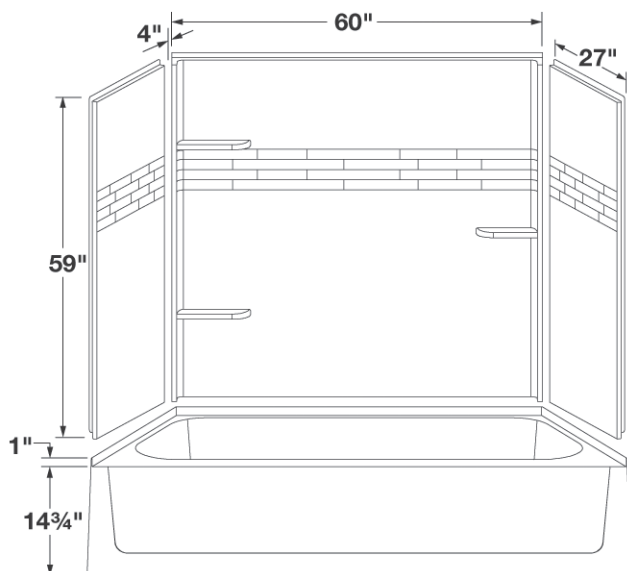
- Produced from high-grade, reinforced, molded fiberglass for optimum strength and impact resistance
- Fits Topaz™ Bathtubs, as well as standard 30" x 60" and 32" x 60" bathtubs of others, see sizes for details
- Three panel wall system with tongue-and-groove seams to create a watertight wall surround
- Mounts direct-to-stud with mounting flanges hidden behind drywall
- Smooth, colorfast semi-gloss finish, resists scuffs
- Mold and mildew-resistant...easy to clean
- **680BB** Bathtub wall with preinstalled backer boards, see page 10 for details

| Model | Wall | Bathtub | Color | Size |
|-------|--------|----------|---------|-----------|
| | 680WHT | T6030L | White | 30" x 60" |
| | 680WHT | T6030R | White | 30" x 60" |
| | 680BN | T6030LBN | Bone | 30" x 60" |
| | 680BN | T6030RBN | Bone | 30" x 60" |
| | 680BT | T6030LBT | Biscuit | 30" x 60" |
| | 680BT | T6030RBT | Biscuit | 30" x 60" |

Model 680 + T6030



Mustee model 680WHT shown with bathtub model T6030R.

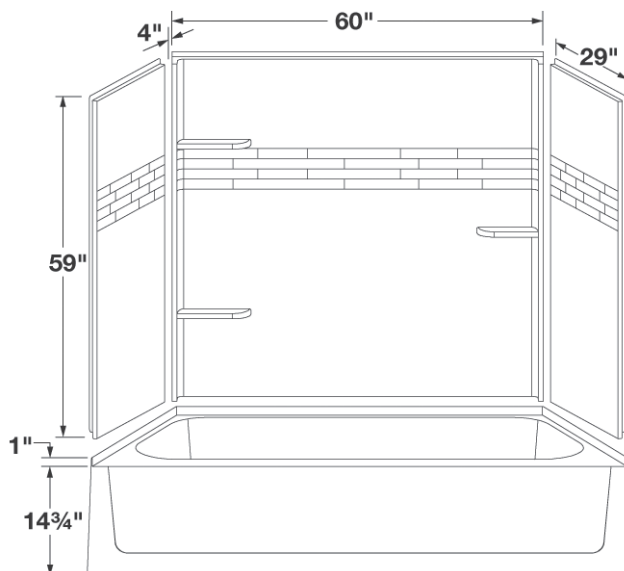


| Model | Wall | Bathtub | Color | Size |
|-------|-----------|---------|-------|-----------|
| | 680-32WHT | T6032L | White | 32" x 60" |
| | 680-32WHT | T6032R | White | 32" x 60" |

Model 680-32 + T6032



Mustee model 680-32WHT shown with bathtub model T6032R.



General: Furnish and install as shown on plans, E. L. Mustee & Sons, Inc. 680 TOPAZ™ bathtub walls semi-gloss, three-piece wall system and TOPAZ™ Fiberglass Bathtub T6030L/R 30" x 60" right or left-handed drain. Construction shall be molded, reinforced fiberglass using matched metal models under extreme heat and pressure with a uniform thickness. Shall meet ANSI Specification Z 124-2022. Color: _____ (White, Bone, Biscuit). Install in compliance with local codes.

General: Furnish and install as shown on plans, E. L. Mustee & Sons, Inc. 680 TOPAZ™ bathtub walls semi-gloss, three-piece wall system and TOPAZ™ Fiberglass Bathtub T6032L/R 32" x 60" right or left-handed drain. Construction shall be molded, reinforced fiberglass using matched metal models under extreme heat and pressure with a uniform thickness. Shall meet ANSI Specification Z 124-2022. Color: White. Install in compliance with local codes.

TOPAZ™ Premium Fiberglass Tub/Shower 4-Piece Unit – Direct-To-Stud Mounted

TOPAZ™ Bathtub and Bathtub Wall Combos from E. L. Mustee & Sons, Inc. provide a 4-piece bath/shower solution. With unique features and hardy design, these models bring style and durability to your bathroom.

Features

- Produced from high-grade, reinforced, molded fiberglass for optimum strength and impact resistance
- Fits Topaz™ Bathtubs, as well as standard 30" x 60" bathtubs of others
- Three panel wall system with tongue-and-groove seams to create a watertight wall surround
- Mounts direct-to-stud with mounting flanges hidden behind drywall
- Smooth, colorfast semi-gloss finish, resists scuffs
- Mold and mildew-resistant...easy to clean

| Model | Wall | Bathtub | Color | Size |
|--------|--------|---------|-------|-----------|
| 665WHT | T6030L | White | White | 30" x 60" |
| 665WHT | T6030R | White | White | 30" x 60" |

Model 665 + T6030



Four molded-in, self draining shelves.

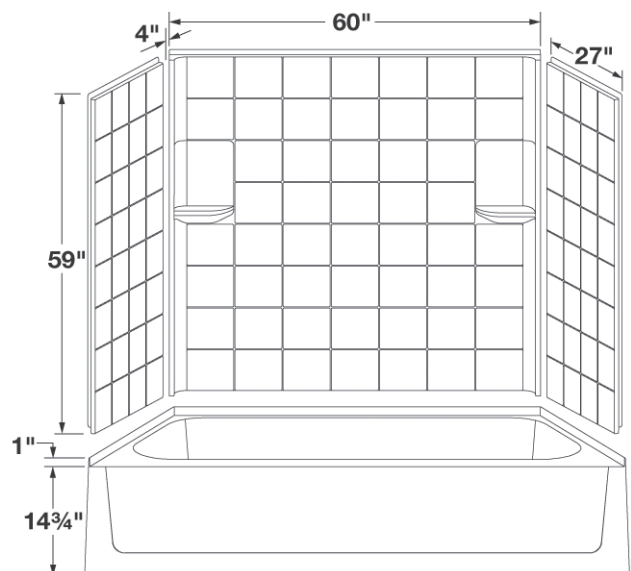
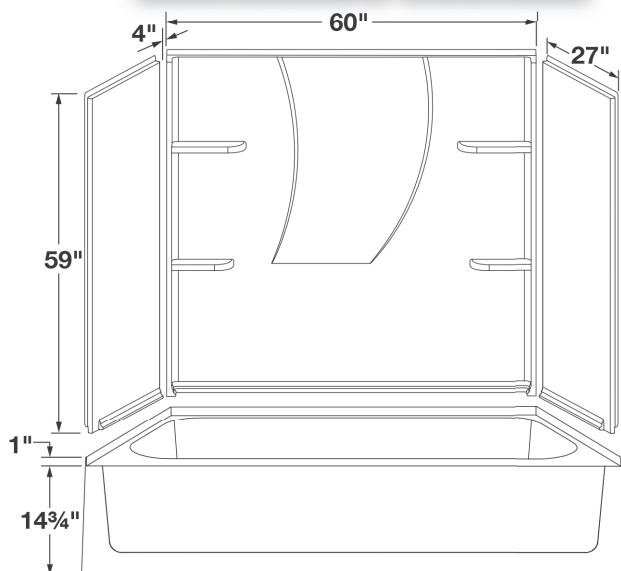
| Model | Wall | Bathtub | Color | Size |
|--------|--------|---------|-------|-----------|
| 670WHT | T6030L | White | White | 30" x 60" |
| 670WHT | T6030R | White | White | 30" x 60" |

Model 670 + T6030



Two shelves. Tile pattern.

CAULKLESS DESIGN!



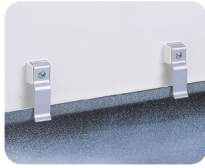
General: Furnish and install as shown on plans, E. L. Mustee & Sons, Inc. Tub/Shower TOPAZ™ Combination Units, semi-gloss, three piece fiberglass wall system and fiberglass bathtub 30" x 60" left for right-hand drain. Construction on units shall be molded, reinforced fiberglass using matched metal molds under extreme heat and pressure creating a uniform thickness. Shall meet ANSI Specification Z 124-2022. Color: White. Install in compliance with local codes.

VARISTONE™, TOPAZ™, DURAWALL®, BATHTUB WALLS & DURATRIM™ WINDOW KITS

Common Features of the TOPAZ™ Bathtub Walls, Models 665WHT, 670WHT, 680WHT, 680-32WHT, & 680WHTBB



- Panels with tongue-and-groove seams.





- Reverse side of center panel has clips for securing to bathtub.



- 1 1/4" flanges fasten direct-to-studwalls with screws, drywall conceals flanges.

Code Accepted

VARISTONE™, TOPAZ™ and DURAWALL® Fiberglass Bathtub Walls meet or exceed performance requirements as indicated:

- American Society of Testing and Materials (ASTM) – E-84 
- American National Standards Institute (ANSI) – Specification Z 124-2022 
- CAN/ULC S102-07 Burn and Smoke Test

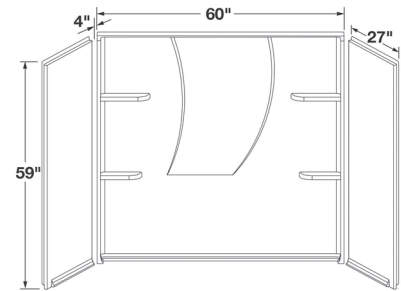
665 TOPAZ™ Premium Fiberglass Bathtub Walls – Direct-To-Stud Mounted, Code Accepted



Features

- Compression molded fiberglass for strength
- Fits Topaz™ 30" x 60" Bathtubs and others
- Includes 4 molded-in, self-draining shelves
- Three panel system with tongue-and-groove seams for a watertight surround
- Mounts direct-to-stud with mounting flanges hidden behind drywall
- Smooth, colorfast semi-gloss finish, resists scuffs
- Mold and mildew-resistant...easy to clean

| Model | Color |
|--------|-------|
| 665WHT | White |



CAULKLESS DESIGN!

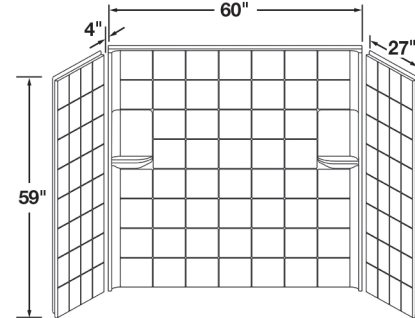
670 TOPAZ™ Premium Fiberglass Bathtub Walls – Direct-To-Stud Mounted, Code Accepted



Features

- Embossed 7" x 7" tile pattern
- Compression molded fiberglass for strength
- Fits Topaz™ 30" x 60" Bathtubs and others
- Includes two molded-in self-draining shelves
- Three panel system with tongue-and-groove seams for a watertight surround
- Mounts direct-to-stud with mounting flanges hidden behind drywall
- Smooth, colorfast semi-gloss finish, resists scuffs
- Mold and mildew-resistant...easy to clean

| Model | Color |
|--------|-------|
| 670WHT | White |



General: Furnish and install as shown on the plans, TOPAZ™ bathtub walls Model: _____ as manufactured by E.L. Mustee & Sons, Inc. Shall be semi-gloss, three-piece wall. Panels are molded fiberglass using matched metal molds under extreme heat and pressure and mount direct-to-studwalls. Includes center panel with molded-in shelf and two side panels. Self-aligning panels use a tongue-and-groove connection. Shall meet ANSI Specification Z 124 2022. Color: White. Install in compliance with local codes.

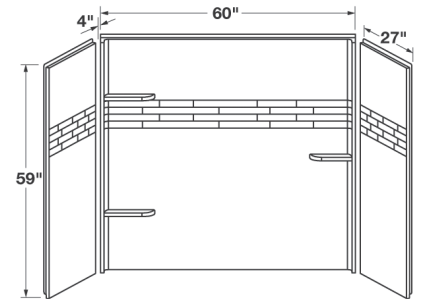
680 TOPAZ™ Premium Fiberglass Bathtub Walls – Direct-To-Stud Mounted, Code Accepted



Features

- Compression molded fiberglass for strength
- Fits Topaz™ 30" x 60" Bathtubs and others
- Includes three self-draining selves molded
- Stylish tile pattern
- Three panel system with tongue-and-groove seams for a watertight surround
- Mounts direct-to-stud with mounting flanges hidden behind drywall
- Smooth, colorfast semi-gloss finish, resists scuffs
- Mold and mildew-resistant...easy to clean

| Model | Color |
|--------|---------|
| 680WHT | White |
| 680BN | Bone |
| 680BT | Biscuit |



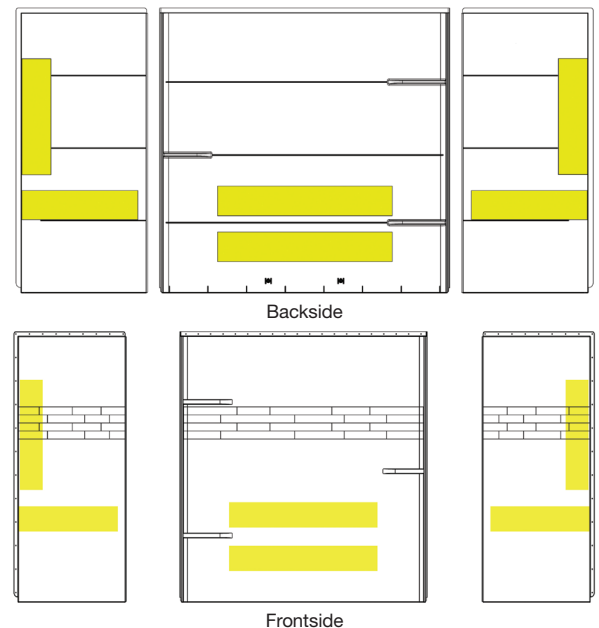
680WHTBB TOPAZ™ Premium Fiberglass Bathtub Walls – Direct-To-Stud Mounted, with Backer Boards

680WHTBB – Model 680WHT with backer boards preinstalled at the factory for ADA applications. Inquire with us about quoted quantities. Yellow indicates placement of backer boards.

| Model | Color |
|----------|-------|
| 680WHTBB | White |

Features

- Compression molded fiberglass for strength
- Fits Topaz™ 30" x 60" Bathtubs and others
- Includes three self-draining selves molded
- Stylish tile pattern
- Three panel system with tongue-and-groove seams for a watertight surround
- Mounts direct-to-stud with mounting flanges hidden behind drywall
- Smooth, colorfast semi-gloss finish, resists scuffs
- Mold and mildew-resistant...easy to clean



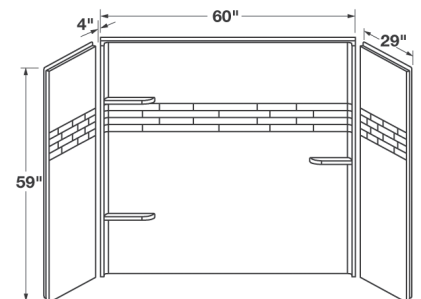
680-32 TOPAZ™ Premium Fiberglass Bathtub Walls – Direct-To-Stud Mounted, Code Accepted



Features

- Compression molded fiberglass for strength
- Fits Topaz™ 32" x 60" Bathtubs and others
- Includes three self-draining selves molded
- Stylish tile pattern
- Three panel system with tongue-and-groove seams for a watertight surround
- Mounts direct-to-stud with mounting flanges hidden behind drywall
- Smooth, colorfast semi-gloss finish, resists scuffs
- Mold and mildew-resistant...easy to clean

| Model | Color |
|-----------|-------|
| 680-32WHT | White |

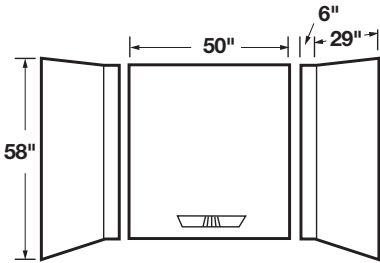


General: Furnish and install as shown on the plans, TOPAZ™ bathtub walls Model: _____ as manufactured by E.L. Mustee & Sons, Inc. Shall be semi-gloss, three-piece wall. Panels are molded fiberglass using matched metal molds under extreme heat and pressure and mount direct-to-studwalls. Includes center panel with molded-in shelf and two side panels. Self-aligning panels use a tongue-and-groove connection. Shall meet ANSI Specification Z 124 2022. Color: _____ (White, Bone, Biscuit). Install in compliance with local codes.

Premium Fiberglass Bathtub Walls – Adhesive Mount, Code Accepted (See page 10)



350 DURAWALL®



Model Color

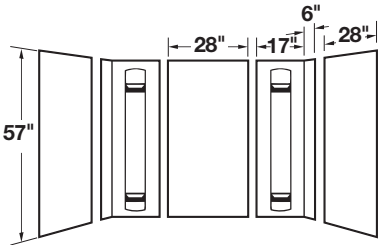
350WHT White

Fits 30" x 60" Bathtub

General: Furnish and install as shown on plans, DURAWALL® Bathtub Walls Model 350, as manufactured by E. L. Mustee & Sons, Inc. The wall system shall be three-piece construction with molded-in shelf. Panels shall be fiberglass material manufactured using matched metal molds under extreme heat and pressure. Shall be semi-gloss, scuff-resistant surface. Unit shall meet ANSI Specification Z 124-2022. Color: White.



557 DURAWALL®



Model Color

557WHT White

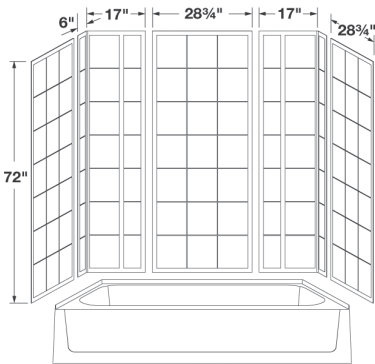
Fits 30" x 60" and 32" x 60" Bathtubs

General: Furnish and install as shown on plans, DURAWALL® Bathtub Walls Model 557, as manufactured by E. L. Mustee & Sons, Inc. The wall system shall be five-piece construction with four molded-in shelves. Panels shall be fiberglass material manufactured using matched metal molds under extreme heat and pressure. Shall be matte finish, scuff-resistant surface. Unit shall meet ANSI Specification Z 124-2022. Color: White.

572T VARISTONE™ Tall Fiberglass Bathtub Walls – Adhesive Mount, Code Accepted



572T VARISTONE™ bathtub walls shown with T6030R bathtub, shower head and valve.



Mustee's VARISTONE™ premium fiberglass, Model 572T bathtub wall surround brings together a classic design, high quality finish and upscale embossed tile pattern across its expansive 72" tall walls.

Model Color

572TWHT White

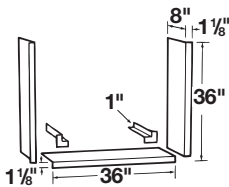
Fits Up to 60" Wide by 34" Deep

General: Furnish and install as shown on plans, fiberglass VARISTONE™ Bathtub Walls Model 572T as manufactured by E.L. Mustee & Sons, inc. Shall be semi-gloss, 5-piece wall system. Panels are molded using matched metal molds under extreme heat and pressure. Shall meet ANSI Specifications Z 124-2022 Color: White.

300.600 DURATRIM™ Fiberglass Window Kit – Code Accepted



Protect window above bathtub. Adhesive-mounted 5-piece fiberglass panels fit windows up to 36" wide with 8" sill depth. May be cut to fit sill and side moldings, easy to install.



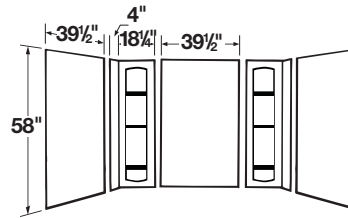
300.600W White
300.600BN Bone

General: Furnish and install as shown on plans, DURATRIM™ Window Trim Kit Model 300.600, as manufactured by E. L. Mustee & Sons, Inc. Made of fiberglass, consists of three 36" by 8" panels and two 8" by 1" corner molding pieces. Shall meet ANSI Specification Z 124-2022. Color: _____ (White, Bone).

Deluxe Thermoplastic Bathtub Walls – Adhesive Mount



56 DURAWALL® – Whirlpool Sized Up To 42" Deep By 72" Wide



| Model | Color |
|-------|-------|
|-------|-------|

| | |
|-------|-------|
| 56WHT | White |
|-------|-------|

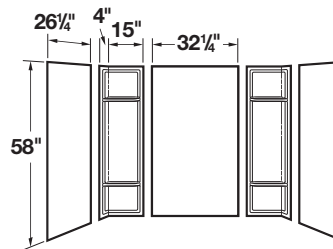
| | |
|------|------|
| 56BN | Bone |
|------|------|

Fits 42" x 72" Bathtub

General: Furnish and install as shown on plans, DURAWALL® Bathtub Wall Model 56, as manufactured by E. L. Mustee & Sons, Inc. The hi-impact thermoplastic wall system shall be 5-piece construction with six formed shelves. One-piece, seamless corner panels with overlapping edges. Uniform color throughout entire thickness of each panel. Color: _____ (White, Bone).



53 DURAWALL®



| Model | Color |
|-------|-------|
|-------|-------|

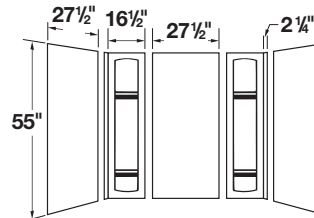
| | |
|-------|-------|
| 53WHT | White |
|-------|-------|

Fits 30" x 60" Bathtub

General: Furnish and install as shown on plans, DURAWALL® Bathtub Wall Model 53, as manufactured by E. L. Mustee & Sons, Inc. The hi-impact thermoplastic wall system shall be 5-piece construction with four formed shelves. One-piece, seamless corner panels with overlapping edges. Uniform color throughout entire thickness of each panel. Color: White.



950 DURAWALL®



| Model | Color |
|-------|-------|
|-------|-------|

| | |
|--------|-------|
| 950WHT | White |
|--------|-------|

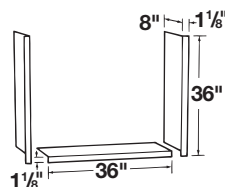
Fits 30" x 60" Bathtub

General: Furnish and install as shown on plans, DURAWALL® Bathtub Wall Model 950, as manufactured by E. L. Mustee & Sons, Inc. The white thermoplastic wall system shall be 5-piece construction with four formed shelves. One-piece, seamless corner panels with overlapping edges. Uniform color throughout entire thickness of each panel. Color: White.

52.600W DURATRIM™ Thermoplastic Window Trim Kit



Protect window above bathtub. Adhesive mounted, 3-piece thermoplastic panels fit windows up to 36" wide with 8" sill depth. May be cut to fit sill and side moldings, easy to install.



52.600W White

General: Furnish and install as shown on plans, DURATRIM™ Window Trim Kit Model 52.600W, as manufactured by E. L. Mustee & Sons, Inc. Made of white, high-impact thermoplastic, consists of three 36" by 8" panels. Color: White.

DURAWALL®, DURABASE®, STYLEMATE® FIBERGLASS SHOWER ENSEMBLES

DURAWALL® fiberglass wall, DURABASE® fiberglass shower floors, and STYLEMATE® enclosures are recognized for their universal design, high quality, innovative features, ease of installation, and durability.



Tongue-and-groove fit



Direct to stud

Features

- DURAWALL® shower walls feature convenient direct-to-stud mounting, innovative leak-proof, tongue-and-groove panels
- DURAWALL® shower wall systems feature multiple, molded-in shelves and a deep gloss, mildew/stain-resistant finish
- DURABASE® floors feature a slip resistant Starburst® floor design. *See pages 22 and 23 for complete DURABASE® features*
- STYLEMATE® enclosures are available in numerous styles and configurations with tempered safety glass. *See complete features on page 30*

Code Accepted

Fiberglass shower walls meet or exceed performance requirements:

- American Society of Testing and Materials (ASTM) and E-84



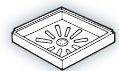
- American National Standards Institute (ANSI) Z 124-2022 and Z 97.1



- International Association of Plumbing and Mechanical Officials (IAPMO®)



36" CORNER SHOWERS – Double Threshold



Model Color/Glass

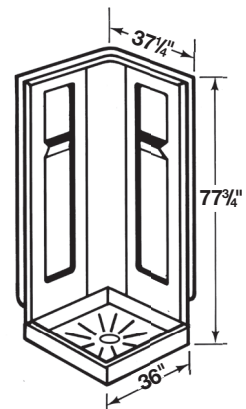
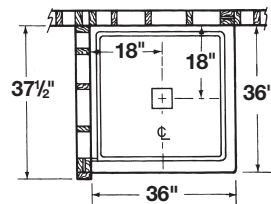
DURAWALL® SHOWER WALL

736CWHT White



DURABASE® SHOWER FLOOR

3636DTM White



See page 17 for valve placement.

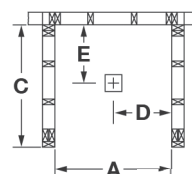
General: Furnish and install as shown on plans, a Corner Shower Ensemble, as manufactured by E. L. Mustee & Sons, Inc., consisting of:

DURAWALL® Shower Walls — Model 736CWHT shall be semi-gloss, 3-piece wall. Panels are molded fiberglass, using matched metal molds under extreme heat and pressure with a minimum uniform thickness of 125 mils and mount direct-to-studwalls. Include corner panel and two side panels with molded-in shelf. Self-aligning panels interlock using a tongue-and-groove connection. Shall meet ANSI Specification Z 124-2022. Color: White.

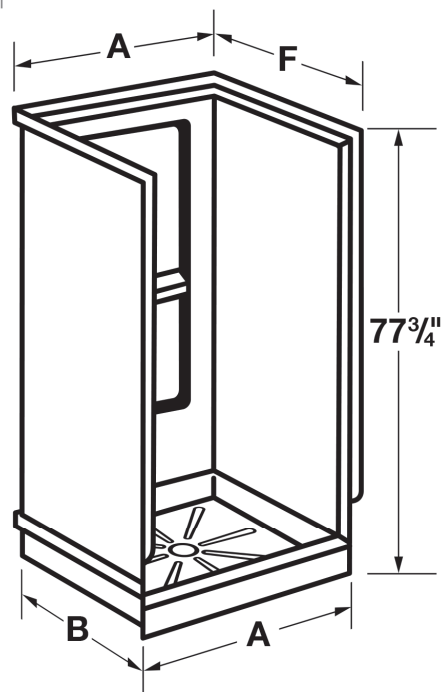
DURABASE® Shower Floor — Model 3636DTM, refer to page 23 for specifications.



SQUARE SHOWERS

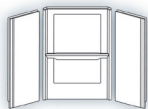


| Shower Size | A | B | C | D | E | F |
|-------------|-----|-----|---------|-----|-----|---------|
| 32" x 32" | 32" | 32" | 33 1/2" | 16" | 16" | 33 1/4" |
| 36" x 36" | 36" | 36" | 37 1/2" | 18" | 18" | 37 1/4" |



Opening for the enclosure, subtract 2" from the shower width. Example: 3248M has a 48" threshold. 48" less 2" = 46". Maximum enclosure height 72". Mounting flange = 1 1/4" (top & side).

32" x 32" Showers



| Model | Color/Glass |
|-----------------------------------|-------------|
| DURAWALL® SHOWER WALLS 732SWHT | White |



| | |
|---------------------------------|-------|
| DURABASE® SHOWER FLOOR 3232M | White |
|---------------------------------|-------|



| | |
|------------------------------------|---------------------|
| STYLEMATE® PIVOT DOOR — Height 65" | |
| 32.705 | Bright Silver/Clear |
| 32.706 | Black Bronze/Clear |

36" x 36" Showers

| Model | Color/Glass |
|-----------------------------------|-------------|
| DURAWALL® SHOWER WALLS 736SWHT | White |



| | |
|---------------------------------|-------|
| DURABASE® SHOWER FLOOR 3636M | White |
|---------------------------------|-------|



| | |
|------------------------------------|---------------------|
| STYLEMATE® PIVOT DOOR — Height 65" | |
| 36.403 | Bright Silver/Clear |
| 36.404 | Black Bronze/Clear |

General: Furnish and install as shown on plans, a Shower Ensemble, as manufactured by E. L. Mustee & Sons, Inc., consisting of:

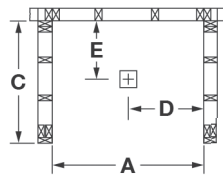
DURAWALL® Shower Walls — Model: _____ (732 or 736) shall be semi-gloss, 3-piece wall. Panels are molded fiberglass, using matched metal molds under extreme heat and pressure and mount direct-to-studwalls. Include center panel with molded-in shelf and two side panels, each with molded-in shelf. Self-aligning panels using a tongue-and-groove connection. Shall meet ANSI Specification Z 124-2022. Color: White.

DURABASE® Shower Floors — Model: _____ refer to page 22 for specifications.

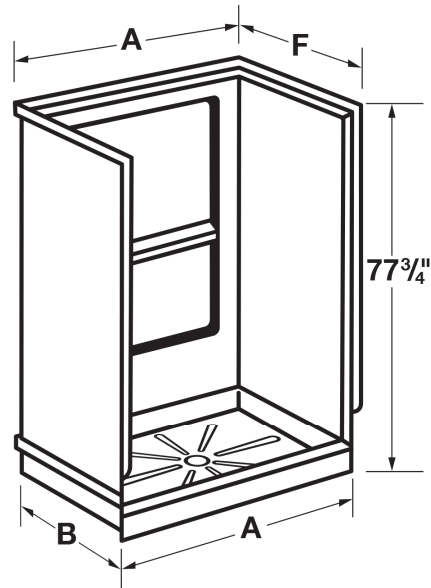
STYLEMATE® Pivot Door Enclosures — Model: _____ refer to page 30 for specifications.



RECTANGULAR SHOWERS



| Shower Size | A | B | C | D | E | F |
|-------------|-----|-----|---------|-----|-----|---------|
| 32" x 48" | 48" | 32" | 33 1/2" | 24" | 16" | 33 1/4" |
| 34" x 48" | 48" | 34" | 35 1/2" | 24" | 17" | 35 1/4" |



Opening for the enclosure, subtract 2" from the shower width. Example: 3248M has a 48" threshold. 48" less 2" = 46". Maximum enclosure height 72". Mounting flange = 1 1/4" (top & side).

32" x 48" Showers

Model **Color/Glass**

DURAWALL® SHOWER WALLS
748-32SWHT White



DURABASE® SHOWER FLOOR
3248M White



STYLEMATE® BY-PASS ENCLOSURE – Height 69"

Framed design

48.403 Bright Silver/Clear

Frameless design

48.406 Bright Silver/Clear

48.407 Brushed Nickel/Clear

48.408 Black Bronze/Clear

34" x 48" Showers

Model **Color/Glass**

DURAWALL® SHOWER WALLS
748-34SWHT White



DURABASE® SHOWER FLOOR
3448M White



STYLEMATE® BY-PASS ENCLOSURE – Height 69"

Framed design

48.403 Bright Silver/Clear

Frameless design

48.406 Bright Silver/Clear

48.407 Brushed Nickel/Clear

48.408 Black Bronze/Clear

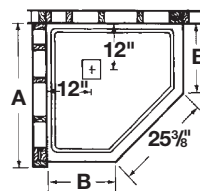
General: Furnish and install as shown on plans, a Shower Ensemble, as manufactured by E. L. Mustee & Sons, Inc., consisting of:

DURAWALL® Shower Walls — Model: _____ (748-32 or 748-34) shall be semi-gloss, 3-piece wall. Panels are molded fiberglass, using matched metal molds under extreme heat and pressure and mount direct-to-studwalls. Include center panel with molded-in shelf and two side panels, each with molded-in shelf. Self-aligning panels using a tongue-and-groove connection. Shall meet ANSI Specification Z 124-2022. Color: _____ (White, Bone).

DURABASE® Shower Floors — Model: _____ refer to page 22 for specifications.

STYLEMATE® By-Pass Enclosures — Model: _____ refer to page 30 for specifications.

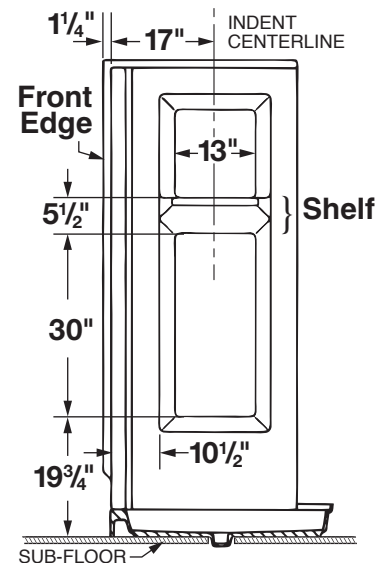
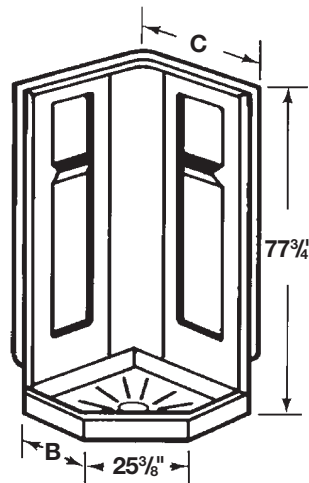
NEO-ANGLE SHOWERS



Shower Size

| | A | B | C |
|-----|---------|-----|---------|
| 36" | 37 1/2" | 18" | 37 1/4" |
| 38" | 39 1/2" | 20" | 39 1/4" |
| 42" | 43 1/2" | 24" | 43 1/4" |

See page 23 for center line dimensions.



Valve Placement Dimensions

36" Showers

Model Color/Glass



DURAWALL® SHOWER WALLS

736CWHT White



38" Showers

Model Color/Glass

DURAWALL® SHOWER WALLS

738CWHT White

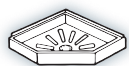


42" Showers

Model Color/Glass

DURAWALL® SHOWER WALLS

742CWHT White



DURABASE® SHOWER FLOOR

3636CM White



DURABASE® SHOWER FLOOR

3838CM White



DURABASE® SHOWER FLOOR

4242CM White



STYLEMATE® NEO-ANGLE ENCLOSURE — Height 70"

36.750 Bright Silver/Obscure
36.761 Bright Silver/Clear
36.762 Brushed Nickel/Clear
36.763 Black Bronze/Clear

STYLEMATE® NEO-ANGLE ENCLOSURE — Height 70"

38.750 Bright Silver/Obscure
38.751 Bright Silver/Clear
38.752 Brushed Nickel/Clear
38.753 Black Bronze/Clear

STYLEMATE® NEO-ANGLE ENCLOSURE — Height 70"

42.751 Bright Silver/Clear
42.752 Brushed Nickel/Clear
42.753 Black Bronze/Clear

General: Furnish and install as shown on plans, NEO-ANGLE Shower Ensembles, as manufactured by E. L. Mustee & Sons, Inc., consisting of:

DURAWALL® Shower Walls — Model: _____ (736C, 738C or 742C) shall be semi-gloss, 3-piece wall. Panels are molded fiberglass, using matched metal molds under extreme heat and pressure and mount direct-to-studwalls. Include corner panel and two side panels with molded-in shelf. Self-aligning panels using a tongue-and-groove connection. Shall meet ANSI Specification Z 124-2022. Color: _____ (White, Bone).

DURABASE® Shower Floors — Model: _____ refer to page 23 for specifications.

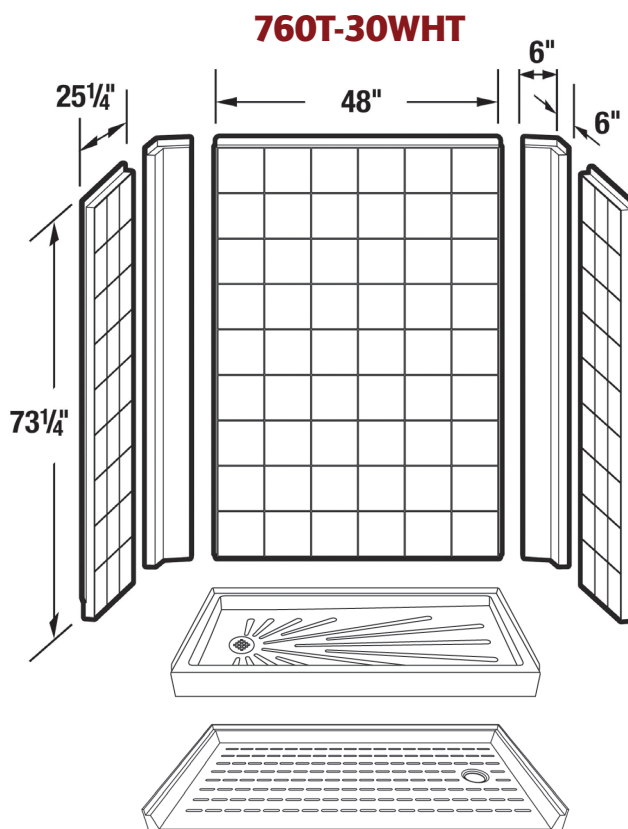
STYLEMATE® NEO-ANGLE Enclosures — Model: _____ refer to page 30 for specifications.

DURAWALL®, DURABASE®, STYLEMATE® FIBERGLASS SHOWER ENSEMBLES



Replace your standard 30"x60" bathtub with Mustee's popular 3060 DURABASE® or 360 Barrier-Free Shower floor. Then complete the installation with Mustee's stylish 760T-30WHT DURAWALL® shower walls.

The embossed tile pattern on the back and side panels of the premium 760T-30WHT, 760T-34WHT and 760T-36WHT DURAWALL® shower walls deliver exceptional design features, deep glass finish, and Mustee's trademark quality construction.



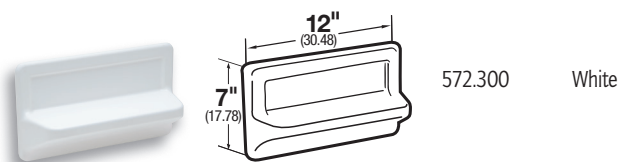
Features

- Compression molded fiberglass for optimum strength
- Embossed large-tile pattern
- Five-panel wall system with interlocking tongue-and-groove seams that assemble quickly to create a watertight surround
- Mounts direct-to-stud with mounting flanges hidden behind drywall or other wall treatment
- Available in white
- Smooth, colorfast deep gloss finish, resists scuffs.
- Mold and mildew-resistant, easy to clean
- Designed to support CareGiver® Grab Bars and Fold-Down Seats as needed

Accessories

572.300 VARISTONE™ — Shelves (Order Separately)

See page 20 for specifications.



30" x 60" Showers

Model Color/Glass




DURAWALL® SHOWER WALLS

760T-30WHT White 



DURABASE® SHOWER FLOORS

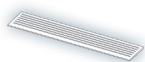
3060R White 
3060L White 



CAREGIVER® BARRIER-FREE SHOWER FLOORS

360R White 
360L White

Drain locations: R = Right Hand L = Left Hand



ENTRY RAMP 12" x 60"

360.100 White



CAREGIVER® GRAB BARS

See page 28 for Grab Bar options.



CAREGIVER® FOLD-DOWN SHOWER SEAT

See page 29 for Fold-Down Seat options.



STYLEMATE® BY-PASS ENCLOSURES FOR 3060L / 3060R

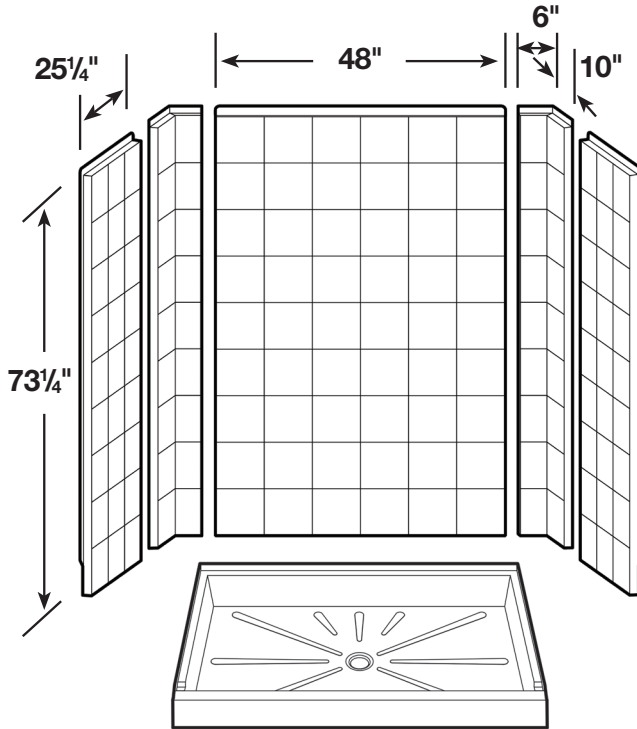
Framed

60.403 Bright Silver/Clear

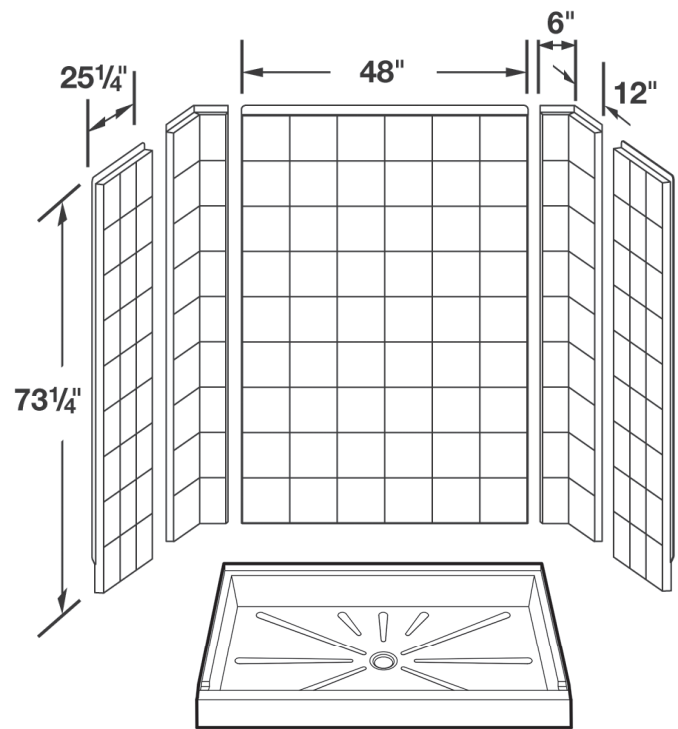
Frameless

60.406 Bright Silver/Clear
60.407 Brushed Nickel/Clear
60.408 Black Bronze/Clear

760T-34WHT



760T-36WHT



34" x 60" Showers

Model Color/Glass



DURAWALL® SHOWER WALLS
760T-34WHT White 



DURABASE® SHOWER FLOORS
3460M White  

STYLEMATE® BY-PASS ENCLOSURES



Framed

60.403 Bright Silver/Clear

Frameless

60.406 Bright Silver/Clear
60.407 Brushed Nickel/Clear
60.408 Black Bronze/Clear

36" x 60" Showers

Model Color/Glass



DURAWALL® SHOWER WALLS
760T-36WHT White 



DURABASE® SHOWER FLOORS
3660M White  

STYLEMATE® BY-PASS ENCLOSURES



Framed

60.403 Bright Silver/Clear

Frameless

60.406 Bright Silver/Clear
60.407 Brushed Nickel/Clear
60.408 Black Bronze/Clear

General: Furnish and install as shown on plans, a Shower Ensemble, as manufactured by E. L. Mustee & Sons, Inc., consisting of:
DURAWALL® Shower Wall Model: _____ (760T-30WHT, 760T-34WHT, 760T-36WHT). Shall be semi-gloss 5-piece wall. Panels are molded fiberglass, using matched metal molds under extreme heat and pressure and mount direct-to-studwalls. Includes center panel and two corner and side panels. Self-aligning panels using an interlocking tongue-and-groove seam. Shall meet ANSI Specification Z 124-2022. Color: White.

SHOWERTUB™ Shower Floors — Model: _____ see page 25 for specifications.

CAREGIVER® Barrier-Free Shower Floors — Model: _____ see page 26 & 27 for specifications.

STYLEMATE® By-Pass Enclosures — Model: _____ see page 30 for specifications.

DURABASE® Shower Floors — Model: _____ see pages 22 & 23 for specifications.



572T VARISTONE™ SHOWER WALLS

Model 572T walls with their distinctive embossed tile pattern, fit perfectly with Mustee's DURABASE® shower floors and STYLEMATE® shower enclosures. CareGiver™ grab bars and seats can be easily installed.

Features

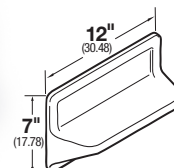
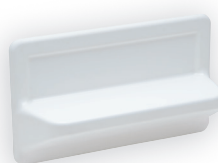
- Embossed 8 $\frac{5}{8}$ " x 9 $\frac{3}{4}$ " tile pattern on side and back panels
- Seamless corner panels are overlapped by the side and back panel and create a high-quality, watertight wall system
- Adhesive-mounts to drywall or like surfaces
- Colorfast, mold and mildew-resistant finish
- Easily trimmed for out-of-plumb alcoves or to install DURATRIM™ window trim kits
- 5 panel, package...two corners, two side walls and one back panel
- Designed to fit a maximum alcove range up to 39" wide by 42" deep... or up to 60" wide and by 34" deep
- 12" x 7" VARISTONE™ shelves can be used to create handy storage
- Available in white

572.300 VARISTONE™ – Shelves (Order Separately)

572.300

White

Order desired number of shelves separately. Sturdy shelf is easy to install. Carton is 12" x 7 $\frac{1}{4}$ " x 4" and weighs 2.5 lbs.



These self-draining 12" x 7" shelves easily mount to the shower wall at any location on the wall. Order multiple shelves to best meet your personal preference.

General: Furnish and install as shown on plans, VARISTONE™ Shower/Bathtub Shelf Model: 572.300, White, as manufactured by E. L. Mustee & Sons, Inc. Shall be semi-gloss, 1-piece molded shelf using matched metal molds under extreme heat and pressure. Shall meet ANSI Specification Z 124-2022.

Code Accepted

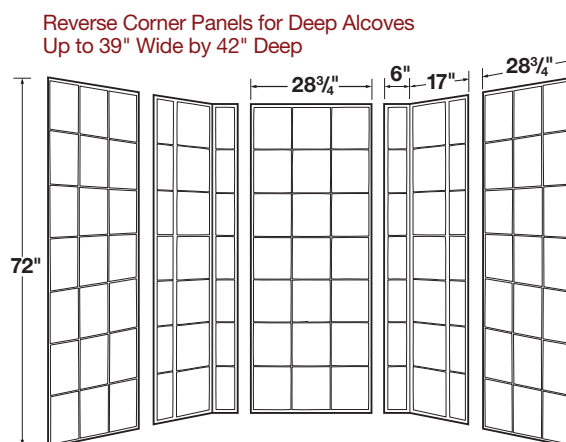
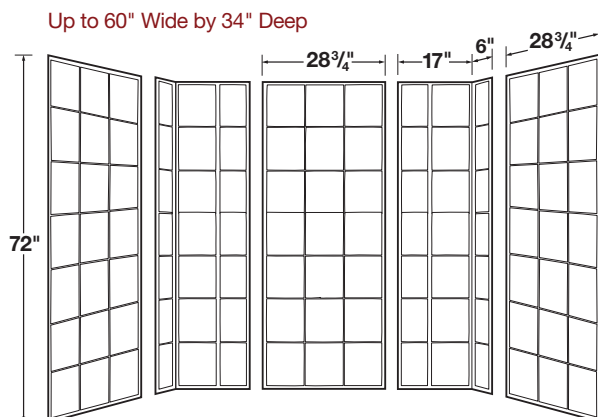
VARISTONE™ Shower/Bathtub Walls meet or exceed performance requirements:

- American National Standards Institute (ANSI) – Specification Z 124-2022 

572T VARISTONE™ – Shower/Bathtub Walls

Carton contains two side, one center, two corner panels and easy to follow, illustrated installation instructions. Carton is 7 $\frac{5}{8}$ " x 32" x 76" and weighs 110 lbs.

| Model | Color |
|---------|-------|
| 572TWHT | White |



General: Furnish and install as shown on plans, fiberglass VARISTONE™ Shower/Bathtub Walls Model 572T as manufactured by E. L. Mustee & Sons, inc. Shall be semi-gloss, 5-piece wall system. Panels are molded using matched metal molds under extreme heat and pressure. Shall meet ANSI Specifications Z 124-2022 Color: White.

DURAWALL® SHOWER WALLS

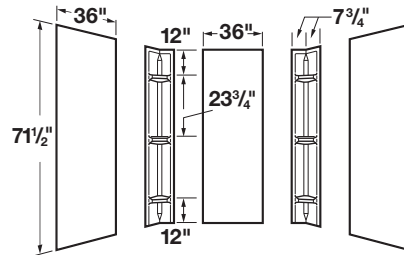
There's nothing like a new shower to dress up a bathroom and make the most of your available floor space. Whatever your plan, Mustee's Model 247, 260 and 265 square & rectangular shower wall systems and the Model 237 NEO-ANGLE/Corner Shower Wall System, give you the freedom to put your design ideas into motion.

Features

- High quality, thermoplastic construction
- Easily adhesive-mounts to drywall or like surfaces
- Six molded-in shelves...Models 247/260; three molded-in shelves...Model 237
- Available in color-fast white
- High gloss, mold and mildew-resistant surface finish
- Trimmable flat panels
- Easily to install and clean
- Adjust for out-of-square walls



247 DURAWALL® – Square and Rectangular

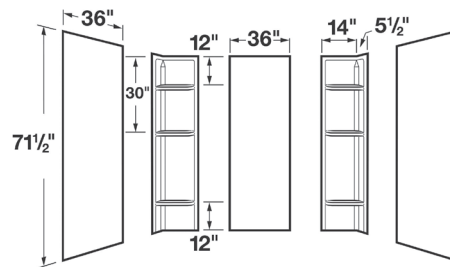


| Model | Color | Width | Side | Shelves |
|--------|-------|-----------|-----------|---------|
| 247WHT | White | Up to 48" | Up to 42" | Six |

General: Furnish and install as shown on plans, DURAWALL® Shower Wall Model 247 as manufactured by E. L. Mustee & Sons, Inc. Thermoplastic wall system shall be 5-piece construction with six formed shelves and overlapping corner panels. Uniform color throughout entire thickness of each panel. Color: White.



260 DURAWALL® – Square and Rectangular

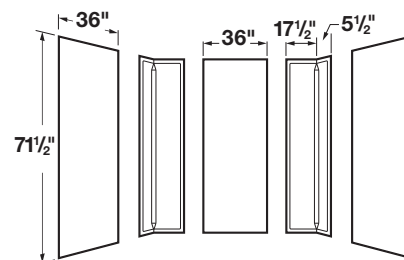


| | | | | |
|--------|-------|-----------|-----------|-----|
| 260WHT | White | Up to 60" | Up to 40" | Six |
|--------|-------|-----------|-----------|-----|

General: Furnish and install as shown on plans, DURAWALL® Shower Wall Model 260 as manufactured by E. L. Mustee & Sons, Inc. Thermoplastic wall system shall be 5-piece construction with six formed shelves, seamless, overlapping corner panels. Uniform color throughout entire thickness of each panel. Color: White.



265 DURAWALL® – Square and Rectangular



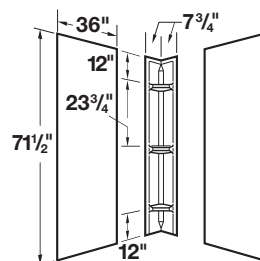
| | | | | |
|--------|-------|-----------|---------------|-------|
| 265WHT | White | Up to 69" | Up to 40 1/2" | Zero* |
|--------|-------|-----------|---------------|-------|

* Use model # 572.300 to customize shower shelf configuration, see page 20.

General: Furnish and install as shown on plans, DURAWALL® Shower Wall Model 265 as manufactured by E. L. Mustee & Sons, Inc. Thermoplastic wall system shall be 5-piece construction with seamless, overlapping corner panels. Uniform color throughout entire thickness of each panel. Color: White.



237 DURAWALL® – Neo-Angle/Corner



| | | | | |
|--------|-------|--|-----------|-------|
| 237WHT | White | | Up to 42" | Three |
|--------|-------|--|-----------|-------|

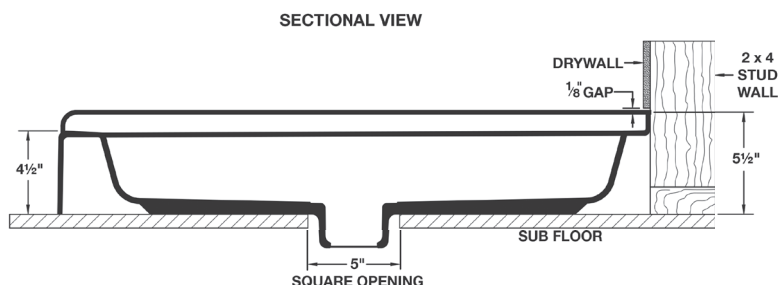
General: Furnish and install as shown on plans, DURAWALL® Shower Wall Model 237 as manufactured by E. L. Mustee & Sons, Inc. Thermoplastic wall system shall be 3-piece construction with three formed shelves, seamless, overlapping corner panel. Uniform color throughout entire thickness of each panel. Color: White.



DURABASE® FIBERGLASS SHOWER FLOORS

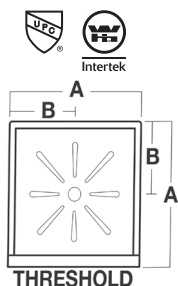
The strength of a quality shower begins with the floor. Mustee's line of DURABASE® shower floors are solid, stable, quality-constructed and exceed expectations.

Mustee's decades of fiberglass molding experience results in a handsome DURABASE® Square, Rectangle, Neo-Angle, and Corner units that will look great, provide great design options, as well as deliver years of dependable service.

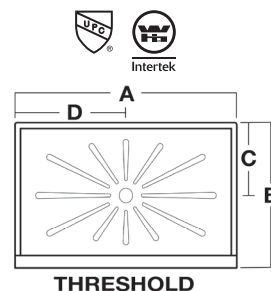


When Ordering Color Models — include suffix BN for Bone or BT for Biscuit (eg. 4242CBN, 3448BT)

Square — Single Threshold



Rectangular — Single Threshold



| Nom. Size | Model | Colors | A | B |
|-----------|-------|----------------------|-----|-----|
| 32" x 32" | 3232M | White | 32" | 16" |
| 34" x 34" | 3434M | White | 34" | 17" |
| 36" x 36" | 3636M | White, Bone, Biscuit | 36" | 18" |
| 42" x 42" | 4242M | White | 42" | 21" |
| 48" x 48" | 4848M | White | 48" | 24" |

| Nom. Size | Model | Colors | A | B | C | D |
|------------|-------|----------------------|-----|-----|-----|-----|
| 32" x 48" | 3248M | White, Bone, Biscuit | 48" | 32" | 16" | 24" |
| 32" x 54" | 3254M | White | 54" | 32" | 16" | 27" |
| 32" x 60" | 3260M | White | 60" | 32" | 16" | 30" |
| 34" x 42" | 3442M | White, Bone | 42" | 34" | 17" | 21" |
| 34" x 48" | 3448M | White, Bone, Biscuit | 48" | 34" | 17" | 24" |
| 34" x 54" | 3454M | White, Bone | 54" | 34" | 17" | 27" |
| 34" x 60" | 3460M | White, Biscuit | 60" | 34" | 17" | 30" |
| 36" x 42" | 3642M | White | 42" | 36" | 18" | 21" |
| 36" x 48" | 3648M | White | 48" | 36" | 18" | 24" |
| 36" x 60" | 3660M | White | 60" | 36" | 18" | 30" |
| 42" x 36"* | 4236M | White | 36" | 42" | 21" | 18" |
| 42" x 48" | 4248M | White | 48" | 42" | 21" | 30" |
| 42" x 60" | 4260M | White | 60" | 42" | 21" | 30" |

* Threshold on 36" side.

Drain Seals — For DURABASE® Shower Floors

Standard drain seal for 2" PVC, ABS, & Iron included in showers with molded in drain bodies.

| Model | |
|--------|---------------------------|
| 32.403 | For 2" soil pipe/ser. wt. |
| 32.404 | For 2" copper pipe |
| 32.405 | For 1 1/2" ABS/PVC pipe |

| | | | | | | |
|-----------|---------|-------|-----|-----|-----|-----|
| 30" x 60" | 3060L | White | 60" | 30" | 15" | 30" |
| 30" x 60" | 3060LBN | Bone | 60" | 30" | 15" | 30" |
| 30" x 60" | 3060R | White | 60" | 30" | 15" | 30" |
| 30" x 60" | 3060RBN | Bone | 60" | 30" | 15" | 30" |

Drain location see page 25, drain assembly not included

Features

- Study, one-piece compression molded fiberglass with structural underbody
- Integrally molded drain with seal and removable strainer, except Model 3060R/L
- Slip-resistant Starburst® floor design
- Designed for connection to pipe
- Available in all popular sizes for square, rectangular, NEO-ANGLE and corner units
- Engineered to fit all Mustee wall systems (See pages 12 through 19) as well as tile
- Mold and mildew-resistant surface, easy to clean

Code Accepted

DURABASE® and SHOWERTUB™ Shower Floors meet or exceed performance requirements:

- International Association of Plumbing and Mechanical Officials (IAPMO®)
- American National Standards Institute (ANSI) – Specification Z 124-2022
- Warnock Hersey® (Canada) Listed – CSA test standards: Shower Floor
- American Society of Testing and Materials (ASTM) – E-84
- CAN/ULC S102-07 Burn and Smoke Test



General: Furnish and install as shown on plans, DURABASE® Shower Floor Model: _____, as manufactured by E. L. Mustee & Sons, Inc. Floor to be one-piece, molded fiberglass, made with matched metal molds. Surface to be slip-resistant Starburst® design. Size: _____" x _____. Shoulder will be no less than 3" high or less than 1" wide. Tiling flange will extend not less than 1" higher than the threshold which provides an integral molded water barrier. Threshold will be not less than 4½" high. Molded-in drain and drain seal for installation of 2" iron DWV (Sch. 40) PVC or ABS sanitary drain pipe. Removable strainer. Shall meet ANSI Specification Z 124-2022. Color: White.

Neo-Angle – Corner Threshold



| Nom. Size | Model | Colors | A | B | C |
|-----------|--------|----------------------------------|-----|-----|-----|
| 36" x 36" | 3636CM | White | 36" | 12" | 18" |
| | | Center lines: 17½" x 24⅞" x 17½" | | | |
| 38" x 38" | 3838CM | White | 38" | 12" | 20" |
| | | Center lines: 19½" x 24⅞" x 19½" | | | |
| 42" x 42" | 4242CM | White | 42" | 12" | 24" |
| | | Center lines: 23½" x 24⅞" x 23½" | | | |

Center line varies based upon thickness of side walls.

Corner – Double Threshold



| Nom. Size | Model | Colors | A | B |
|-----------|---------|--------|-----|-----|
| 34" x 34" | 3434DTM | White | 34" | 17" |
| 36" x 36" | 3636DTM | White | 36" | 18" |

Featured shower floor provides more space for maximum bathing area and comfort.



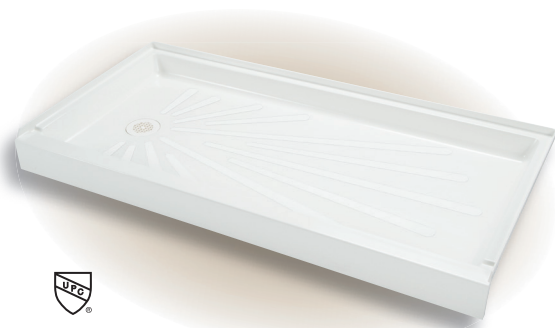
► Replacing the 34" depth with the new 36" depth by most builders to provide more room to shower.

- **3642M** – 36" x 42"
- **3648M** – 36" x 48"
- **3660M** – 36" x 60"

► Bigger showers in suite bathrooms are replacing garden and whirlpool bathtubs to provide a large functional shower for the homeowners.

- **4848M** – 48" x 48"
- **4248M** – 42" x 48"
- **4260M** – 42" x 60"

DURABASE® SHOWER FLOOR REPLACES 30" x 60" BATHTUB



Replace a standard 5' bathtub with an easy-access shower floor—or install new. The DURABASE® will let you achieve either...with no need for major re-plumbing or changing the room layout.



DURABASE® provides approximately 35% more usable interior floor space than a standard tub and eliminates the difficulties of stepping up and over a standard 15" high tub apron. It's excellent for seniors living independently or a beautiful way to create a luxury walk-in shower.

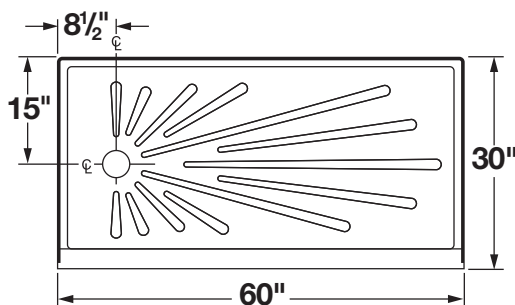
Features

- Fits the same footprint as a standard 30" x 60" bathtub
- High quality molded fiberglass construction
- Drain location offset 8 1/2" x 15"; right and left-hand models
- Accommodates standard 2" drain or 60.300 Drain Kit
- Available in white and bone matched finishes with Mustee wall systems, see pages 20, & 21; as well as tile or like finish

Code Accepted

Mustee Easy Access Showers meet or exceed performance requirements as listed:

- International Association of Plumbing and Mechanical Officials (IAPMO®) 
- American Society of Testing and Materials (ASTM) – E-84 
- American National Standards Institute (ANSI) Specification Z 124-2022



| Model | Color | Drain |
|---------|-------|------------|
| 3060R | White | Right Hand |
| 3060RBN | Bone | Right Hand |
| 3060L | White | Left Hand |
| 3060LBN | Bone | Left Hand |

General: Furnish and install as shown on plans, ShowerTub™ Model: _____ as manufactured by E. L. Mustee & Sons, Inc. Floor to be one-piece, molded fiberglass, using matched metal molds under extreme heat and pressure. Surface to be slip-resistant design. Size: 30" x 60". Flood level rim will not be less than 3" high. Tiling flange will extend not less than 1" higher than the threshold which is an integral molded water barrier. Threshold will be 4 1/2" high. Drain hole offset 8 1/2" by 15" to accept drain kit for 2" PVC, ABS or iron DWV pipe, available left or right hand. Color: _____ (White, Bone).

3060, 360 & 3865 Shower Floor Drains

Drain Assembly – for 2" DWV Pipe

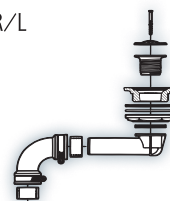
| Model | Description |
|---------|----------------|
| 42.317A | Drain assembly |

Drain Seal

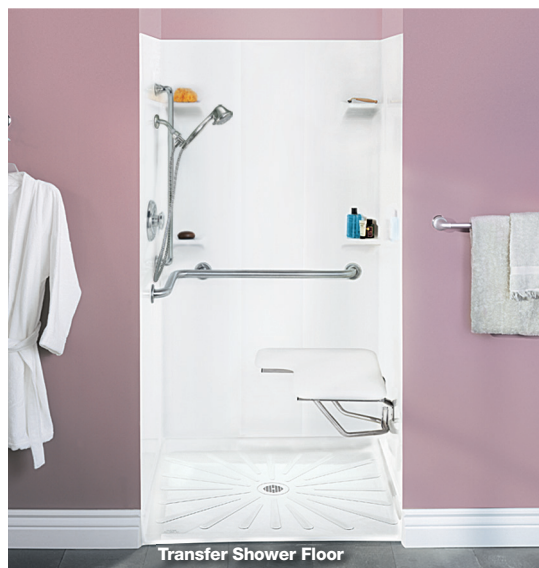
| | |
|--------|---|
| 42.320 | Optional drain seal for 2" copper (DWV) |
| 42.321 | Optional drain seal for 2" soil pipe (SW) |

Drain Assembly – use with 3060R/L and 360R/L to replace tub waste and connect to existing pipe.

| Model | Color |
|-----------|-------|
| 60.300A | White |
| 60.300ABN | Bone |



3739 CareGiver® EASY-ACCESS SHOWER FLOORS



The CareGiver® product line of Easy-Access Shower Floors provides quality-built, engineered solutions that enable safe, effortless shower access to those with limited or assisted mobility. Companion products include Fold-down Shower Seats and Grab Bars (See pages 28-29)

Features

- Slip-resistant surfaces...stain, mildew and mold resistant finish
- High quality molded fiberglass construction
- Uses standard 2" drain
- Available in white matched finishes with Mustee wall systems (See pages 20-21)
- Easy to install and clean
- Meets ADA requirements as specified

Code Accepted

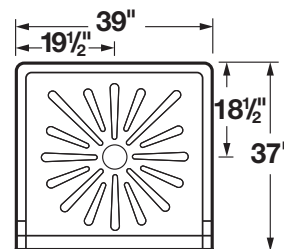
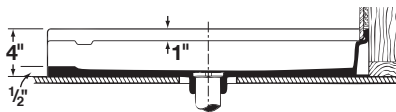
- American Society of Testing & Materials (ASTM) E-84



Transfer Shower Floor 37"x 39"

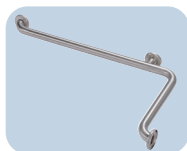


| Model | Color | Drain |
|------------------------------|-------|--------------|
| TRANSFER SHOWER FLOOR | | |
| 3739M | White | Center Drain |



General: Furnish and install as shown on plans Transfer Shower Floor Model: _____, as manufactured by E. L. Mustee & Sons, Inc. Floor to be one piece, molded fiberglass made with matched metal molds. Surface to be slip-resistant Starburst® design. Size 37"x 39". Tiling flange will extend not less than 1" high to provide an integral water barrier. Threshold will be 1/2" high. Molded-in drain and drain seal for installation of 2" iron DWV (Sch. 40) PVC or ABS Sanitary drain pipe. Removable strainer. Shall meet ADA, E-84 and Code of Federal Regulation 2018. Color: White.

Accessories



- CareGiver® Safety Grab Bars, see page 28



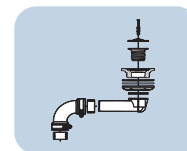
- CareGiver® Fold-Down Shower Seats, see page 29



- DURAWALL® Shower Walls, see pages 14-19

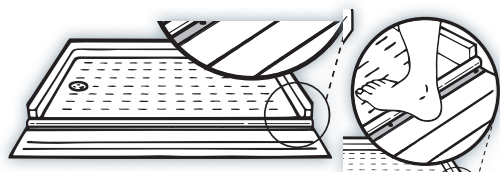


- GapSeal-Pro™ Model 60.320A, see page 22



- Drain Assemblies, see page 25

360.210 Continuous Water Barrier Kit

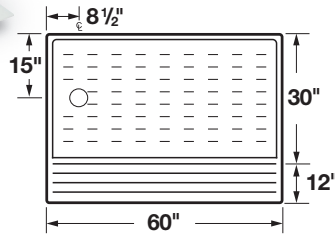


360.210 Continuous Water Barrier Kit – Creates an effective water barrier for the shower threshold that easily collapses for wheelchairs or walkers then instantly reforms to keep water from escaping. Length 67".

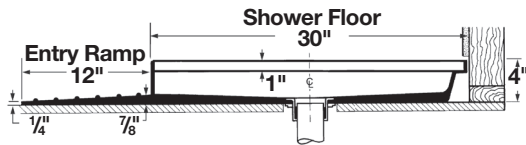
EASY ACCESS SHOWER FLOORS



Barrier-Free Shower Floor 30" x 60" and Entry Ramp 12" x 60"



Shown with optional entry ramp, 360.100



Features

- Produced from high-grade, reinforced, molded fiberglass
- Ideal for new or remodel projects...fits several DURAWALL® Shower Walls as well as ceramic tile or preformed wall kit
- Replaces standard 30" deep by 60" wide bathtubs
- Slip resistant surface...stain, mildew and mold-resistant finish
- Optional drain kits are available; LH or RH drain location (see page 25)

| Model | Color | Drain |
|---------------------------|-------|------------|
| BARRIER-FREE SHOWER FLOOR | | |
| 360R | White | Right Hand |
| 360L | White | Left Hand |

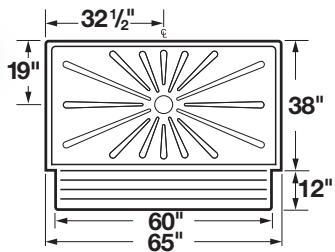
| Model | Color |
|------------|-------|
| ENTRY RAMP | |
| 360.100 | White |

General: Furnish and install as shown on plans DURABASE® Shower Floor Model: _____, as manufactured by E. L. Mustee & Sons, Inc. Floor to be one piece, molded fiberglass made with matched metal molds. Surface to be slip-resistant. Size 30" x 60". Tiling flange will extend not less than 1" high to provide an integral water barrier. Shall meet ADA, E-84 and Code of Federal Regulation 2018. Color: White.

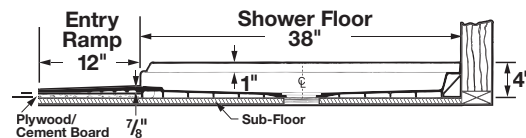
360.100 Entry Ramp — Furnish and install as shown on plans DURABASE® Shower Floor Entry Ramp Model: _____, as manufactured by E. L. Mustee & Sons, Inc. Ramp to be one piece, molded fiberglass made with matched metal molds. Size 12" x 60". Color: White.



Barrier-Free Shower Floor 38" x 65" and Entry Ramp 12" x 60"



Shown with optional entry ramp, 360.100



Features

- Produced from high-grade, reinforced, molded fiberglass
- Ideal for new or remodel projects
- Fits 65" wide by 38" deep alcove
- Slip resistant surface...stain, mildew and mold-resistant finish
- Meets ADA requirements for a full 36" turning circle
- Suggest 42.317A drain assembly
- Optional drain kits also available (see page 25)



| Model | Color | Drain |
|---------------------------|-------|--------------|
| BARRIER-FREE SHOWER FLOOR | | |
| 3865 | White | Center Drain |

| Model | Color |
|------------|-------|
| ENTRY RAMP | |
| 360.100 | White |

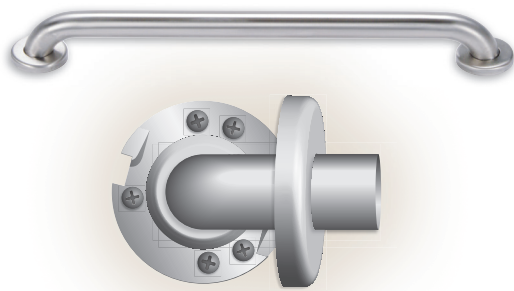
Code Accepted

- Americans with Disabilities Act (ADA)
- Code of Federal Regulations July 1, 1997 and July 1, 2007 (ADA)

General: Furnish and install as shown on plans Barrier-Free Shower Floor Model 3865, as manufactured by E. L. Mustee & Sons, Inc. Floor to be one piece, molded fiberglass made with matched metal molds. Surface to be slip-resistant Starburst® design that does not interfere with the flow of water. Size 38" x 65". Tiling flange will extend not less than 1" high to provide an integral water barrier. Threshold will be 1/2" high. Shall meet ADA, E-84 and Code of Federal Regulation 2018. Color: White.

360.100 Entry Ramp — Furnish and install as shown on plans DURABASE® Shower Floor Entry Ramp Model: 360.100, as manufactured by E. L. Mustee & Sons, Inc. Ramp to be one piece, molded fiberglass made with matched metal molds. Size 12" x 60". Color: White.



CAREGIVER® SAFETY GRAB BARS



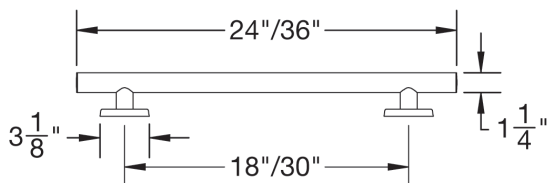
TWIST-LOCK CONCEALED FLANGE — locking tabs on the flange cover plate. Turn 15 degrees under the matching wedges on the mounting flange.

GRAB BARS — stainless steel, concealed twist-lock flanges, smooth finish

T Style

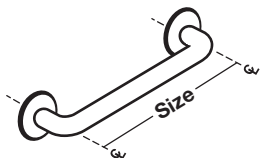
| Size | | Model | |
|------|--------|---------|---|
| 24" | 610 mm | 390.323 |  |
| 36" | 915 mm | 390.324 |  |

Easy to mount flange! 3 Set Screws on post allow pre-mounting to the wall before attaching the bar.



1 1/2" Straight

| Size | | Model | |
|------|---------|---------|--|
| 18" | 457 mm | 390.305 | |
| 24" | 610 mm | 390.301 | |
| 36" | 915 mm | 390.306 | |
| 42" | 1067 mm | 390.307 | |
| 48" | 1220 mm | 390.302 | |



General: Furnish and install as shown on plans, Straight Safety Grab Bar Model: _____, as provided by E. L. Mustee & Sons, Inc. Grab bar with Twist-Lock concealed flange shall be 1 1/2" diameter, 18 gauge, type 304 satin-finish stainless steel tubing. 14-gauge stainless steel mounting flange shall be Heliarc welded to the tube to form a single structural unit. Grab bar shall comply with applicable building codes. Meets ANSI A117.1.

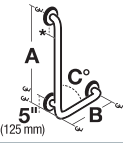
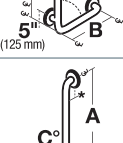
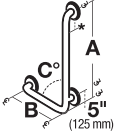
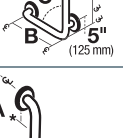
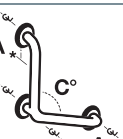
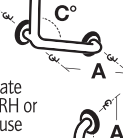
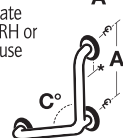

Grab bars benefit those needing extra stability and support when showering or bathing. Mustee's reputation for excellence in both design features and quality make the company's CareGiver® line of Grab Bars the preferred choice of both healthcare professionals and home owners alike.

Featuring exceptional strength and rigidity, produced from heavy gauge stainless steel, CareGiver® grab bars are manufactured to meet or exceed the most stringent industry and government requirements..


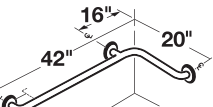
Features

- Smooth stainless steel, 18-gauge tubing, satin finish, 1 1/2" diameter, t-style polished finish
- Exclusive "Twist-Lock" concealed flange-snaps into place for a secure, tamper-proof mounting
- All bars have a nominal offset distance of 1 1/2" (38 mm)
- Bar can't separate from flange
- Flat contact surface won't cut wall surfaces – bar remains stable without further tightening
- 304 Stainless steel mounting flange 14 gauge
- Tested to withstand 500 lbs. of downward load when properly installed
- Meets or exceeds HUD, FHA, VA, ADA and other Federal/Local codes

1 1/2" Angled

| | A | — Size — | B | C | Model |
|---|-----|----------|------------------|--------|-------------|
|  | 24" | 610 mm | 16" | 430 mm | 90° 390.308 |
|  | 32" | 813 mm | 16" | 430 mm | 90° 390.309 |
|  | 24" | 610 mm | 16" | 430 mm | 90° 390.310 |
|  | 32" | 813 mm | 16" | 430 mm | 90° 390.311 |
|  | 30" | 762 mm | | 90° | 390.312 |
|  | 12" | 305 mm | No Corner Flange | 120° | 390.313 |
|  | 16" | 430 mm | | 120° | 390.314 |
|  | 24" | 610 mm | | 120° | 390.315 |

Inside Corner Styles

| | | | | | | |
|---|-----|---------|-----|--------|-----|---------|
|  | 34" | 863 mm | 18" | 457 mm | 90° | 390.304 |
|  | 42" | 1067 mm | 20" | 508 mm | 90° | 390.303 |

General: Furnish and install as shown on plans, Angled Safety Grab Bar Model: _____, as provided by E. L. Mustee & Sons, Inc. Grab bar with Twist-Lock concealed flange shall be 1 1/2" diameter, 18 gauge, type 304 satin-finish stainless steel tubing. 14-gauge stainless steel mounting flange shall be Heliarc welded to the tube to form a single structural unit. Grab bar shall comply with applicable building codes. Meets ANSI A117.1.

CAREGIVER® FOLD-DOWN SEATS



Strong, sturdy and quality built, Mustee offers the most popular seat configurations and styles in both self-supporting and seats with legs.

Besides being a necessity for those who are unsteady on their feet and require assistance in the shower, many others enjoy Mustee premium fold-down shower seats for the convenience and comfort.

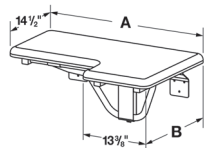
CareGiver® fold-down seats are the ideal solution for creating a comfortable and sturdy sit space in showers of all types.



Features

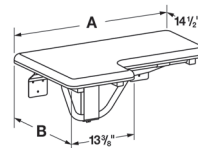
- Popular sizes and shapes
- Fire and mildew resistant
- When properly installed, wall-mount units can support up to 400 lbs., and leg-supported units can support up to 400 lbs.
- White cushion filled with high-resilience, high-density foam to maintain original shape
- Smooth cushion edges without corded piping – eliminates discomfort for pressure-sensitive bathers
- Rust-resistant stainless steel hardware
- Easy to install & clean – stain-resistant surface

Left-Hand Seat – Wall Mount



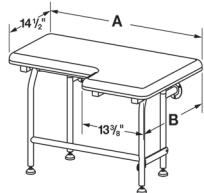
| Size (A x B) | Model |
|--------------|---------|
| 26" x 21" | 390.402 |
| 32" x 21" | 390.404 |

Right-Hand Seat – Wall Mount



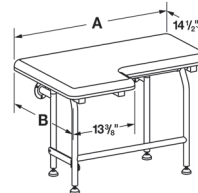
| Size (A x B) | Model |
|--------------|---------|
| 26" x 21" | 390.401 |
| 32" x 21" | 390.403 |

Left-Hand Seat – With Legs



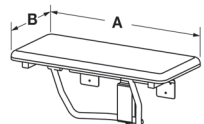
| Size (A x B) | Model |
|--------------|---------|
| 26" x 21" | 390.405 |
| 32" x 21" | 390.406 |

Right-Hand Seat – With Legs



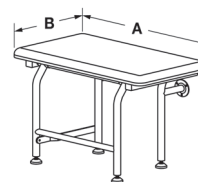
| Size (A x B) | Model |
|--------------|---------|
| 26" x 21" | 390.407 |
| 32" x 21" | 390.408 |

Rectangular Seat – Wall Mount



| Size (A x B) | Model |
|---------------|---------|
| 23" x 14 1/2" | 390.413 |
| 26" x 14 1/2" | 390.409 |
| 32" x 14 1/2" | 390.410 |

Rectangular Seat – With Legs



| Size (A x B) | Model |
|---------------|---------|
| 26" x 14 1/2" | 390.411 |
| 32" x 14 1/2" | 390.412 |

WALL MOUNTED UNITS:

General: Furnish and install as shown on plans, Fold-down Wall Mounted Shower Seat Model: _____, as provided by E. L. Mustee & Sons, Inc. Shower seat tubing shall be one-inch diameter, 18 gauge, type 304 stainless steel with #4 satin finish. Mounting brackets shall be 12-gauge type 304 stainless steel. Padded vinyl cushion shall have 1 1/2" high density, high-resilience foam, covered with fire and mildew resistant, UV inhibited, marine-grade Naugahyde. White cushion shall have no external piping. Shower seat unit shall comply with applicable building codes. Meets ANSI A117.1.

LEG SUPPORTED UNITS:


General: Furnish and install as shown on plans, Fold-down Leg-Supported Shower Seat Model: _____, as provided by E. L. Mustee & Sons, Inc. Shower seat tubing shall be one-inch diameter, 18 gauge, type 304 stainless steel with #4 satin finish. Shall include a fold-down mechanism with four support legs. Mounting brackets shall be 12-gauge type 304 stainless steel. Padded vinyl cushion shall have 1 1/2" high density, high-resilience foam, covered with fire and mildew resistant, UV inhibited, marine-grade Naugahyde. White cushion shall have no external piping. Shower seat unit shall comply with applicable building codes. Meets ANSI A117.1.

STYLEMATE® SHOWER ENCLOSURES & DOORS

Looking for the best way to finish off your Mustee shower? That's easy... select one of our many decorative STYLEMATE® doors and enclosures to add that finishing touch.

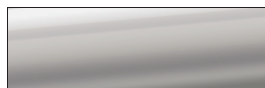
Code Accepted

STYLEMATE® Enclosures meet or exceed performance requirements:

- American National Standards Institute (ANSI) Specification Z 97.1 

Features

- Rolling doors include rollers with long-life bearings for years of smooth operation
- Bright silver, brushed-nickel or black bronze frames are constructed from high-quality engineered aluminum
- Tempered safety glass options include clear or obscure glass
- Pivot doors feature magnetic catch
- Easy to install and clean



Bright Silver



Black Bronze



Brushed Nickel



Pivot Doors – Height 65"

| Model | Opening | Finish | Glass |
|--------|-----------|---------------|-------|
| 32.705 | 29½"–31¼" | Bright Silver | Clear |
| 32.706 | 29¼"–30¼" | Black Bronze | Clear |
| 36.403 | 33½"–35¼" | Bright Silver | Clear |
| 36.404 | 33¾"–34¾" | Black Bronze | Clear |

General: Furnish and install as shown on plans, a STYLEMATE® Pivot Door, as manufactured by E. L. Mustee & Sons, Inc. Model: _____ shall be a swing style door with _____ (Bright Silver, Black Bronze) finish aluminum frame and clear tempered safety glass panel. Continuous-pull handle with magnetic seal. Out-of-plumb conditions up to 1" can be adjusted at latch jamb. Can be installed for right or left opening. Shall meet ANSI Specification Z 97.1.



By-Pass Framed Door



By-Pass Frameless Door

By-Pass Doors – Height 69"

| Model | Opening | Finish | Glass |
|------------------|---------|----------------|-------|
| Framed | | | |
| 48.403 | 47" | Bright Silver | Clear |
| Frameless | | | |
| 48.406 | 47" | Bright Silver | Clear |
| 48.407 | 47" | Brushed Nickel | Clear |
| 48.408 | 47" | Black Bronze | Clear |
| Framed | | | |
| 60.403 | 59" | Bright Silver | Clear |
| Frameless | | | |
| 60.406 | 59" | Bright Silver | Clear |
| 60.407 | 59" | Brushed Nickel | Clear |
| 60.408 | 59" | Black Bronze | Clear |

General: Furnish and install as shown on plans, a STYLEMATE® By-Pass Enclosure, as manufactured by E. L. Mustee & Sons, Inc. Model: _____ with _____ (Bright Silver, Brushed Nickel, Black Bronze) finish. Shall be by-pass style with aluminum frame and clear tempered safety glass. Out-of-plumb conditions up to 1" can be adjusted. Shall meet ANSI Specification Z 97.1.



Neo-Angle Enclosures – Height 70"

| Model | Opening | Finish | Glass |
|--------|---------|----------------|---------|
| 36.750 | 36" Neo | Bright Silver | Obscure |
| 36.761 | 36" Neo | Bright Silver | Clear |
| 36.762 | 36" Neo | Brushed Nickel | Clear |
| 36.763 | 36" Neo | Black Bronze | Clear |
| 38.750 | 38" Neo | Bright Silver | Obscure |
| 38.751 | 38" Neo | Bright Silver | Clear |
| 38.752 | 38" Neo | Brushed Nickel | Clear |
| 38.753 | 38" Neo | Black Bronze | Clear |
| 42.751 | 42" Neo | Bright Silver | Clear |
| 42.752 | 42" Neo | Brushed Nickel | Clear |
| 42.753 | 42" Neo | Black Bronze | Clear |

General: Furnish and install as shown on plans, NEO-ANGLE Shower Ensemble, as manufactured by E. L. Mustee & Sons, Inc., consisting of: STYLEMATE® Enclosure – Model: _____ with _____ (Bright Silver, Brushed Nickel, Black Bronze) finish. Safety glass panels shall be obscure or clear. Side-wall jambs adjust ¾" for out-of-plumb walls. Reversible pivot door with continuous-pull handle integrally extruded and magnetic seal. Door can be hung to open left or right. Shall meet ANSI Specification Z 97.1.

UTILATUB® & UTILATWIN®

Laundry Tubs and Sinks



LAUNDRY/UTILITY FIBERGLASS SINKS

2218 Undermount or Top Mount Sink – 3 1/2" Drain Opening



Undermount



Top Mount

It's time to think undermount for your utility sink.

E. L. Mustee & Sons has done just that. Meet the newest VECTOR™ undermount utility sink.

Ideal for home bars, hobby, work, or utility rooms, this utility sink is the best on the market bringing together upscale style and great design. Let us help you discover a multitude of ways in which this utility sink can complement any home environment.

Code Accepted

Utility Sinks meet or exceed performance requirements:

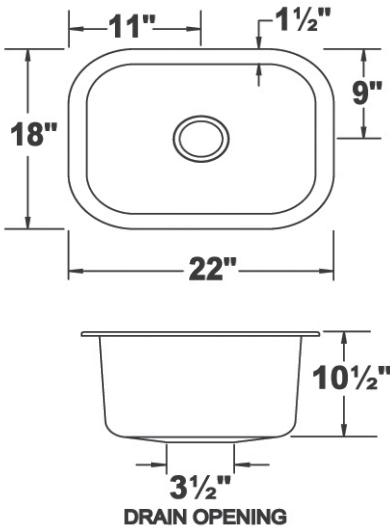
- International Association of Plumbing and Mechanical Officials (IAPMO®)
- Warnock Hersey® (Canada) – meets CSA #B45.0 and B.45.5
- American National Standards Institute (ANSI) – Specification Z 124-2022



Features

- Mustee's premium, high grade VARISTONE™ fiberglass
- One piece molded with matched metal molds
- Semi-gloss, scratch & stain resistant
- Drain opening for standard 3 1/2" basket strainer (not included)
- Accommodates any faucet, soap dispenser and more that can be surface mounted to the counter top
- Color: White
- Template included for undermount and top mount installation

| Model | Color | Dimension | Length | Width | Depth |
|-------|-------|-----------|--------|-------|-------|
| 2218 | White | Overall | 18" | 22" | 11" |



Undermount Cut Out – 15" x 19" with round corners

Drop In Cut Out – 15 1/2" x 19 1/2"

See template included with sink for exact measurements

General: Furnish and install as shown on plans, an Undermount sink model 2218 as manufactured by E. L. Mustee & Sons, Inc. Material composition shall be molded fiberglass, using matched metal molds under extreme heat and pressure. One-piece, seamless construction with self-rimming edge for Undermount or top mount installation. Shall meet ANSI Specification Z 124-2017. Overall size 18" length x 22" width x 11" depth, weight 16 lbs., Color: White.



Model 25 VECTOR™ Multi-Task Sink

LAUNDRY/UTILITY FIBERGLASS SINKS

The new generation of Mustee Utility Sinks are not just for laundry rooms anymore. It's easy to envision these great looking sinks in craft or work rooms or at home bars.

Features

- Molded fiberglass construction
- Self-rimming, easy to install and clean
- Stain-resistant, colorfast surface finish
- Multiple pilot holes to install single or dual handle faucet with 4" or 8" center, soap dispensers or sprayers

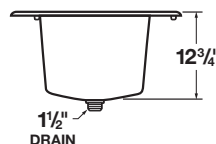
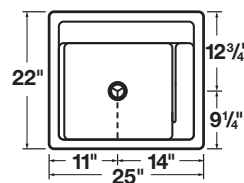
Code Accepted

Utility Sinks meet or exceed performance requirements:

- International Association of Plumbing and Mechanical Officials (IAPMO®)
- Warnock Hersey® (Canada) – meets CSA #B45.0 and B.45.5
- American National Standards Institute (ANSI) – Specification Z 124-2022



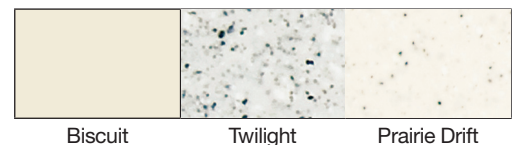
25 VECTOR™ Multi-Task Sink – Includes 1 1/2" Drain for 1 1/2" P-Trap with Stopper



12-Gallon Capacity

| Dimensions | LxWxD* | Model | Color |
|----------------|---------------------|-------|---------------|
| Overall | 22" x 25" x 12 3/4" | 25 | White |
| Inside (top) | 15 1/2" x 22" | 25BT | Biscuit |
| Inside (shelf) | 15 1/2" x 3 3/8" | 25TW | Twilight |
| Cutout | 21" x 24" | 25PD | Prairie Drift |

25 Vector™ Colors (check for availability)



General: Furnish and install as shown on plans, a Countertop Sink Model 25 as manufactured by E. L. Mustee & Sons, Inc. Material composition shall be molded fiberglass, using matched metal molds under extreme heat and pressure. One-piece, seamless construction with self-rimming edge and complete 1 1/2" drain assembly. Shall meet ANSI Specification Z 124-2022. Overall size 22" length x 25" width x 12 3/4" depth, weight 16 lbs. Color: _____ (White, Biscuit, Twilight, Prairie Drift).

Accessories

Optional Utility Rack – Model 25.300

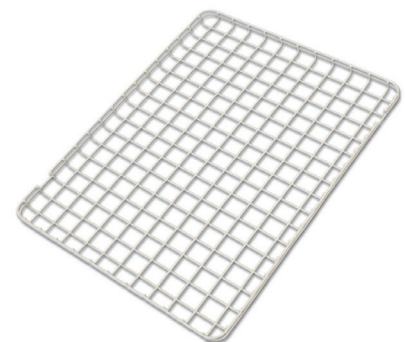


The optional Utility Rack is the perfect way to realize all the functionality that the VECTOR™ Multi-Task Sink has to offer.

Designed to rest on the shelf and opposite ledge, this strong, VECTOR™ utility rack creates a work surface ideal for rinsing, watering, craft work or drying...the options are endless!

White plastic coated steel wire rack will support up to 40 lbs.

| Model | Color |
|--------|-------|
| 25.300 | White |

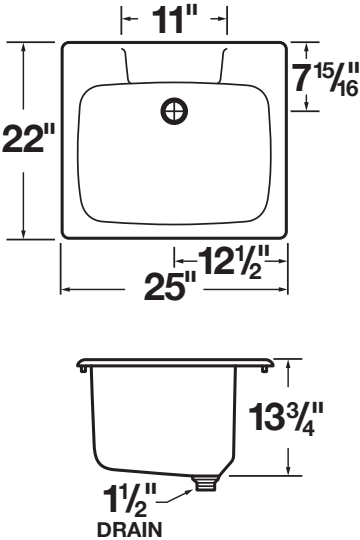




10 Utility Sink –
Includes 1 1/2" Drain for 1 1/2" P-Trap, with Stopper
Must drill holes



| Dimensions | LxWxD* | Model | Color |
|--------------------|-----------------------------|-------|---------|
| Overall | 22" x 25" x 13 3/4" | 10 | White |
| Inside Bowl | 15 3/4" x 21 3/8" x 13 1/4" | 10BN | Bone |
| Cutout | 21" x 24" | 10BT | Biscuit |
| 17-Gallon Capacity | | | |

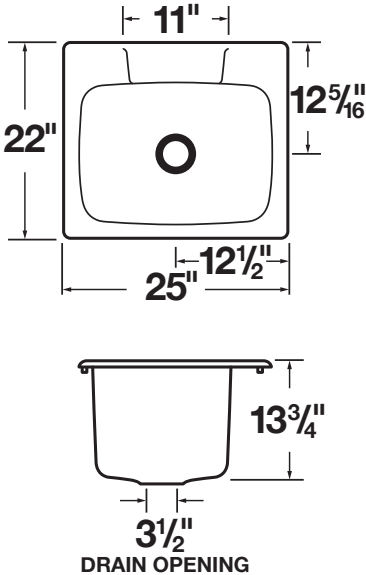


General: Furnish and install as shown on plans, a Countertop Sink Model 10 as manufactured by E. L. Mustee & Sons, Inc. Shall be molded fiberglass, using matched metal molds under extreme heat and pressure. One-piece molded construction with self-rimming edge. Complete drain assembly. Overall size: 22" x 25" x 13 3/4". Shall meet ANSI Specification Z 124-2022. Color: _____ (White, Bone, Biscuit).

10C Utility Sink – 3 1/2" Opening
Must drill holes



| Dimensions | LxWxD* | Model | Color |
|-------------|-----------------------------|--------------------|-------|
| Overall | 22" x 25" x 13 3/4" | 10C | White |
| Inside Bowl | 15 3/4" x 21 3/8" x 13 1/4" | 17-Gallon Capacity | |
| Cutout | 21" x 24" | | |



General: Furnish and install as shown on plans, a Countertop Sink Model 10C as manufactured by E. L. Mustee & Sons, Inc. Shall be molded fiberglass, using matched metal molds under extreme heat and pressure. One-piece molded construction with self-rimming edge. 3 1/2" drain opening. Overall size: 22" x 25" x 13 3/4". Shall meet ANSI Specification Z 124-2022. Color: White.

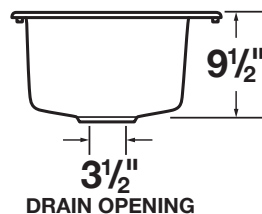
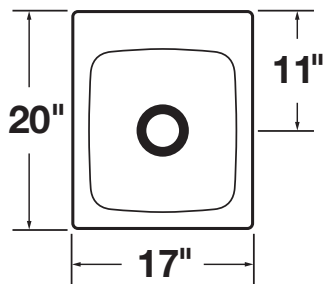


11 Utility Sink – 3 1/2" Opening

Must drill holes



| Dimensions | LxWxD* | Model | Color |
|-------------------|--------------------|-------|---------|
| Overall | 20" x 17" x 10" | 11 | White |
| Inside Bowl | 15" x 14" x 9 1/2" | 11BN | Bone |
| Cutout | 18 1/2" x 15 1/2" | 11BT | Biscuit |
| 7-Gallon Capacity | | | |



General: Furnish and install as shown on plans, a Countertop Sink Model 11 as manufactured by E. L. Mustee & Sons, Inc. Material composition shall be molded fiberglass, using matched metal molds under extreme heat and pressure. One-piece seamless construction with self-rimming edge. 3 1/2" drain opening. Overall size: 20" x 17" x 10". Shall meet ANSI Specification Z 124-2022. Color: _____ (White, Bone, Biscuit).

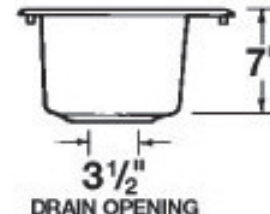
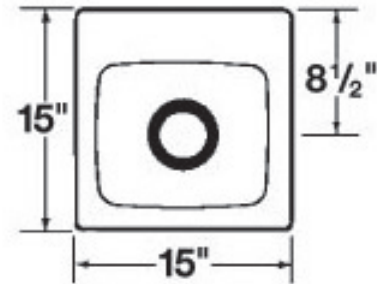


20 Bar Sink – 3 1/2" Opening

Must drill holes



| Dimensions | LxWxD* | Model | Color |
|-------------|--------------------|-------------------|-------|
| Overall | 15" x 15" x 7 3/4" | 20 | White |
| Inside Bowl | 10" x 12" x 7" | 3-Gallon Capacity | |
| Cutout | 13 1/2" x 13 1/2" | | |



General: Furnish and install as shown on plans, a Countertop Sink Model 20 as manufactured by E. L. Mustee & Sons, Inc. Shall be molded fiberglass, using matched metal molds under extreme heat and pressure. One-piece construction with self-rimming edge. 3 1/2" drain opening. Overall size: 15" x 15" x 7 3/4". Shall meet ANSI Specification Z 124-2022. Color: White.

UTILATUB® & UTILATWIN® LAUNDRY TUBS

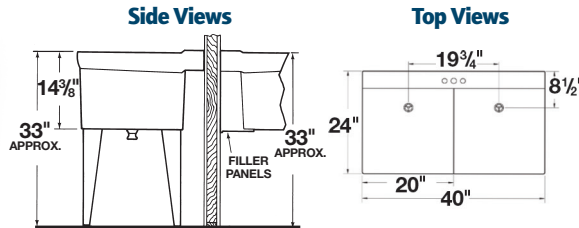
The standard of excellence in single and double bowl laundry tubs is UTILATUB® and UTILATWIN®, exclusively from E. L. Mustee & Sons, Inc.

Mustee tubs are molded using premier DURASTONE® structural fiberglass and Co-PolyPure™ polypropylene. There is a size and style to fit any setting.

Features

- Extra deep tubs help retain water...capacities range from 18 to 23 gallons per bowl
- High strength, impact resistant construction
- All models hook up to standard 1½" P-Trap
- Floor-mount models feature heavy gauge Eco-Friendly powder coated steel legs with levelers
- Wall-mount models feature a heavy gauge steel mounting bracket and hardware
- Stain and mildew-resistant surface, easy to clean
- Twin drain assembly included with all UTILATWIN® models
- **Eco-Friendly powder coated legs**
- All Mustee laundry tubs accommodate 4" center set faucets. Model 15F/W, 17F/W, 18F/W, 27F/W and 26F/W can also accommodate 8" center set and single-lever faucets

Premier Thermoplastic Laundry Tubs



Model Mount Length* Width*

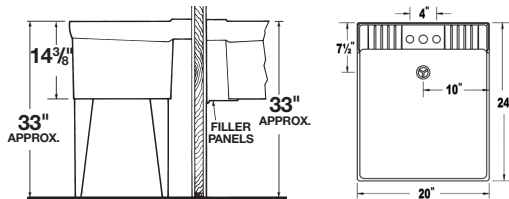
27F/W UTILATWIN® LAUNDRY TUB

| | | | |
|-----|-------|-----|-----|
| 27F | Floor | 24" | 40" |
| 27W | Wall | 24" | 40" |

38-Gallon Capacity
Three holes predrilled



General: Furnish and install as shown on plans, UTILATWIN® Laundry/Utility Tub Model: _____ (27F, 27W), as manufactured by E. L. Mustee & Sons, Inc. Unit shall be one-piece molded construction using cellular structural thermoplastic with matched metal molds under extreme heat and pressure. Complete drain assembly, twin drain waste coupling, recessed divider wall between tubs and floor or wall mounting hardware. Shall meet ANSI Specification Z 124-2022. Color: White.



19F/W UTILATUB® LAUNDRY TUB

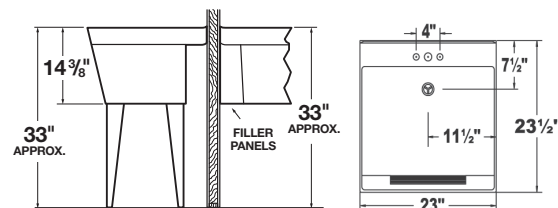
| | | | |
|-----|-------|-----|-----|
| 19F | Floor | 24" | 20" |
| 19W | Wall | 24" | 20" |

18-Gallon Capacity
Three holes predrilled



UTILATOP™ Top Cover Available (See page 39)

General: Furnish and install as shown on plans, UTILATUB® Laundry/Utility Tub Model: _____ (19F, 19W), as manufactured by E. L. Mustee & Sons, Inc. Tub shall be one-piece molded construction using structural thermoplastic with matched metal molds under extreme heat and pressure. Tub to include integrally molded drain assembly, stopper and floor or wall mounting hardware. Shall meet ANSI Specification Z 124-2022. Color: White.



15F/W UTILATUB® LAUNDRY TUB

| | | | |
|-----|-------|---------|-----|
| 15F | Floor | 23 1/2" | 23" |
| 15W | Wall | 23 1/2" | 23" |

19-Gallon Capacity
Three holes predrilled



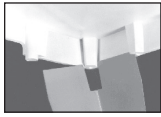
Built-in scrub board

General: Furnish and install as shown on plans, UTILATUB® Laundry/Utility Tub Model: _____ (15F, 15W), as manufactured by E. L. Mustee & Sons, Inc. Tub shall be one-piece molded construction using structural thermoplastic with matched metal molds under extreme heat and pressure. Tub to include built-in scrub board, integrally molded drain assembly, stopper and floor or wall mounting hardware. Shall meet ANSI Specification Z 124-2022. Color: White.

* Length (front to back);
Width (left to right).

Features (Continued)

- Sturdy, one-piece molded design
- Extra deep molded tubs minimize overflow risk
- Leakproof, integrally molded-in drain or drain assembly with stopper



Sturdy, steel legs



Ample shelf



Molded drain

Code Accepted

UTILATUB® and UTILATWIN® Laundry/Utility Tubs meet or exceed performance requirements as listed:

- International Association of Plumbing and Mechanical Officials (IAPMO®)
- Warnock Hersey® (Canada) Listed – CSA test standards: Laundry Tray – #B45.0 and #B45.5, Drain – #B125
- American National Standards Institute (ANSI) – Specification Z 124-2022



UTILATOP™ Laundry Tub Cover

**Unique Top
Cover Creates
Counter Space!**



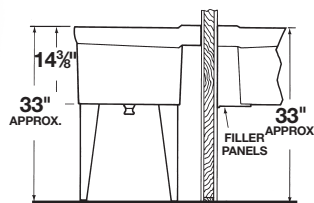
19.204A

Unique UTILATOP™ Laundry Tub Cover creates additional counter space. Supports up to 40 lbs. White, stain resistant finish. Fits UTILATUB® Models 19F, 19W, 18F and 18W.

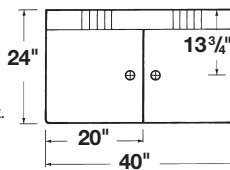
Premier DURASTONE® Laundry Tubs



Side Views



Top Views



Model Mount Length* Width*

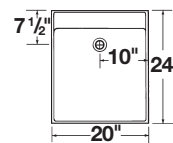
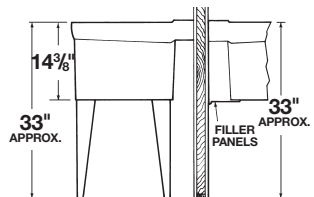
26F/W UTILATWIN® LAUNDRY TUB

| | | | |
|-----|-------|-----|-----|
| 26F | Floor | 24" | 40" |
| 26W | Wall | 24" | 40" |

38-Gallon Capacity
Must drill holes



General: Furnish and install as shown on plans, UTILATWIN® Laundry/Utility Tub Model: _____ (26F, 26W), as manufactured by E. L. Mustee & Sons, Inc. Unit shall be one-piece molded construction using natural crushed stone with polyester resin, complete drain assembly, twin drain waste coupling, recessed divider wall between tubs and floor or wall mounting hardware. Shall meet ANSI Specification Z 124-2022. Color: White with marbled finish.



18F/W UTILATUB® LAUNDRY TUB

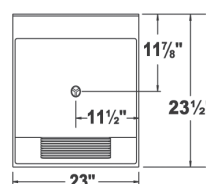
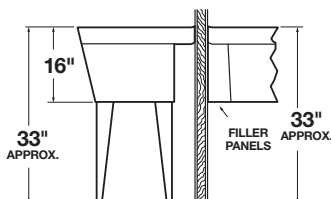
| | | | |
|-----|-------|-----|-----|
| 18F | Floor | 24" | 20" |
| 18W | Wall | 24" | 20" |

18-Gallon Capacity
Must drill holes



UTILATOP™ Top Cover Available (See page 39)

General: Furnish and install as shown on plans, UTILATUB® Laundry/Utility Tub Model: _____ (18F, 18W), as manufactured by E. L. Mustee & Sons, Inc. Tub shall be one-piece molded construction using natural crushed stone with polyester resin. Tub to include integrally molded drain assembly, stopper and floor or wall mounting hardware. Shall meet ANSI Specification Z 124-2022. Color: White with marbled finish.



17F/W UTILATUB® LAUNDRY TUB

| | | | |
|-----|-------|---------|-----|
| 17F | Floor | 23 1/2" | 23" |
| 17W | Wall | 23 1/2" | 23" |

19-Gallon Capacity
Must drill holes

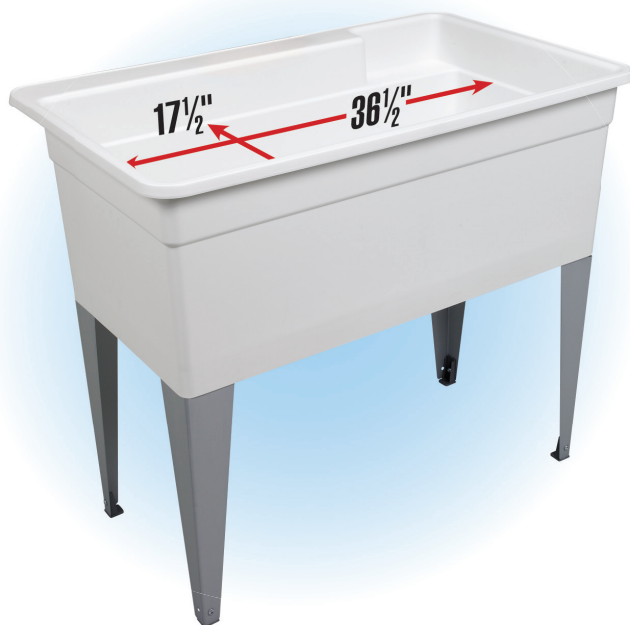


Built-in scrub board

General: Furnish and install as shown on plans, UTILATUB® Laundry/Utility Tub Model: _____ (17F, 17W), as manufactured by E. L. Mustee & Sons, Inc. Tub shall be one-piece molded construction using natural crushed stone with polyester resin. Tub to include built-in scrub board, integrally molded drain assembly, stopper and floor or wall mounting hardware. Shall meet ANSI Specification Z 124-2022. Color: White with marbled finish.

* Length (front to back);
Width (left to right).

28F BigTub UTILATUB® UTILITY TUB



Great For Washing Really
BIG THINGS!

If you need a really BIG space to wash your dog, clean off BBQ grates, or ice down all your favorite beverages, then you need the 28F BIGTUB™ UTILATUB® multi-purpose utility tub.

Truly "King-sized," the 28F is one huge 40" wide, single bowl tub that's great addition to any Man Cave, utility room, crafting area, and more.



Features

- One-piece molded tub of impact-resistant polypropylene
- Eco-Friendly powder coated steel legs, with adjustable levelers
- Large, self-draining back shelf directs water run-off into the tub
- Accommodates single-lever or dual-handle faucet with 4" or 8" center
- Mold and mildew-resistant components
- Easy to assemble and install
- Color-fast, stain-resistant white finish
- Drain stopper

| Model | Mount | Outside HxWxD | Inside HxWxD |
|-------|-------|---------------|--------------|
|-------|-------|---------------|--------------|

| | | | |
|---------------|-------|-----------------|-----------------------------|
| 28F UTILATUB® | Floor | 34" x 40" x 24" | 12 1/2" x 36 1/2" x 17 1/2" |
|---------------|-------|-----------------|-----------------------------|

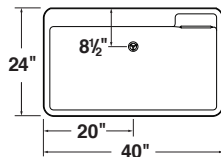
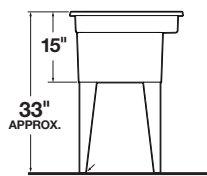
36-Gallon Capacity
Must drill holes for faucet



General: Furnish and install as shown on plans, BIGTUB™ UTILATUB® Utility Tub Model 28F as manufactured by E.L. Mustee & Sons, Inc. Tub shall be one-piece molded polypropylene with matched metal molds. Includes steel legs with adjustable levelers; a 1 1/2" Molded-in drain and Drain stopper. Shall meet ANSI Specification Z 124-2022 Color: White. Weight: 23 lbs.

Side Views

Top Views



21F LilTub UTILATUB® UTILITY TUB – Extra Narrow – Just 18" Wide – Fits Where Other Tubs Can't



The 21F Lil'TUB brings all the best in Mustee's full size Laundry/Utility Tub features and benefits to an extra-narrow tub that fits in virtually any laundry space. "Preferred by the Pros" for decades, Mustee UTILATUB Laundry/Utility tubs are the quality standard in features, performance and value.

Features

- One piece molded construction
- 15-Gallon capacity, extra deep 13" tub with smooth surface
- Leakproof, integrally molded-in drain with stopper
- Connects to standard 1 1/2" P-Trap
- Accommodates single lever or dual-handle faucet with 4" or 8" center
- Eco-Friendly powder coated steel legs, with adjustable levelers
- Mold and mildew-resistant components
- Easy to assemble and install
- Color-fast white finish



| Model | Mount | Width* | Length* |
|-------|-------|--------|---------|
|-------|-------|--------|---------|

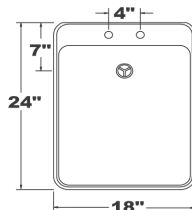
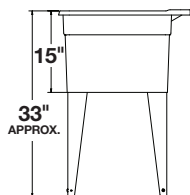
| | | | |
|---------------|-------|-----|---------|
| 21F UTILATUB® | Floor | 18" | 23 1/2" |
|---------------|-------|-----|---------|

15-Gallon Capacity
Two holes predrilled

General: Furnish and install as shown on plans, UTILATUB® Laundry/Utility Tub Model 21 as manufactured by E. L. Mustee & Sons, Inc. Model 21 shall be one-piece molded Co-PolyPure™ tub complete with drain and floor hardware. Color: White with satin finish.

Side Views

Top Views

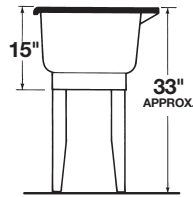


CO-POLYPURE™ LAUNDRY TUBS

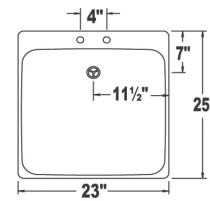
14 UTILATUB® Laundry Tub



Side Views



Top Views



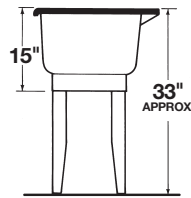
| Model | Mount | Width* | Length* | |
|--|-------|--------|---------|---|
| 14 UTILATUB® | | | | |
| 14 | Floor | 23" | 25" |  |
| 20-Gallon Capacity Two holes predrilled | | | | |

General: Furnish and install as shown on plans, UTILATUB® Laundry/Utility Tub Model 14 as manufactured by E. L. Mustee & Sons, Inc. Model 14 shall be one-piece molded Co-PolyPure™ tub complete with drain and floor hardware. Shall meet ANSI Specification Z 124-2022 Color: White with satin finish.

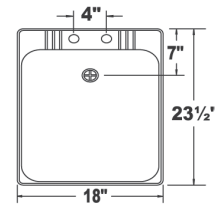
12 UTILATUB® Laundry Tub



Side Views



Top Views



| Model | Mount | Width* | Length* | |
|--|-------|--------|---------|---|
| 12 UTILATUB® | | | | |
| 12 | Floor | 18" | 23 1/2" |  |
| 14-Gallon Capacity Two holes predrilled | | | | |

General: Furnish and install as shown on plans, UTILATUB® Laundry/Utility Tub Model 12 as manufactured by E. L. Mustee & Sons, Inc. Model 12 shall be one-piece molded Co-PolyPure™ tub complete with drain and floor hardware. Shall meet ANSI Specification Z 124-2022 Color: White with satin finish.

Accessories

19.204A UTILATOP™ – Laundry Tub Top Cover



Conceals tub interior and provides additional counter space. Heavy-duty, molded UTILATOP™ fits Mustee's 19F (floor), 19W (wall), 18F (floor) and 18W (wall) UTILATUB® Laundry Tubs. White, colorfast surface is easy to clean.

93.600 – Laundry Tub Faucet



Chrome-finish, 4" center set, 6" swing spout with aerator and hose-end.



20.600 – Faucet Block

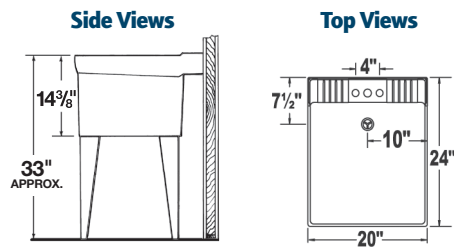


Deluxe molded faucet block mounts to laundry tub when using a clamp-on faucet with overhead water supply.

One convenient box...everything you need to install a Mustee laundry tub:

Kit Includes

- Single or double laundry tub with self-leveling legs
- 1½" P-Trap with 12" tailpiece
- 4" Center set faucet with 6" swing spout and aerator
- Two flexible 20" supply lines



| Model | Style | Width (A) | Length (B) | Drain (C) |
|-------|-------|-----------|------------|-----------|
|-------|-------|-----------|------------|-----------|

19CF UTILATUB® COMBO

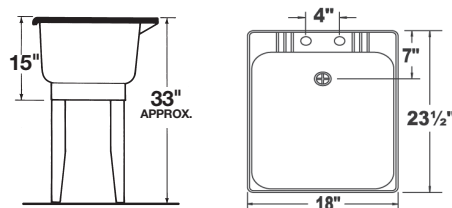
| | | | | |
|------|--------|-----|-----|-----|
| 19CF | Single | 20" | 24" | 10" |
|------|--------|-----|-----|-----|

18-Gallon Capacity
Three holes predrilled



Includes Standard Faucet

General: Furnish and install as shown on plans, UTILATUB® Laundry/Utility Tub Model 19CF as manufactured by E. L. Mustee & Sons, Inc. Model 19C shall be one piece molded construction using structural thermoplastic with matched metal molds under extreme heat and pressure. Tub to include integrally molded drain assembly, stopper, floor hardware, faucet, supply lines, P-Trap, top cover and Teflon® tape. Shall meet ANSI Specification Z 124-2022 Color: White.



12C UTILATUB® COMBO

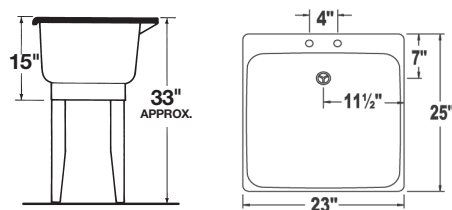
| | | | | |
|-----|--------|-----|-------|----|
| 12C | Single | 18" | 23 ½" | 9" |
|-----|--------|-----|-------|----|

18-Gallon Capacity
Two holes predrilled



Includes Standard Faucet

General: Furnish and install as shown on plans, UTILATUB® Laundry/Utility Tub Model 12C as manufactured by E. L. Mustee & Sons, Inc. Model 12C—shall be one-piece molded Co-PolyPure™ tub, complete with drain, faucet, supply lines, P-Trap, Teflon® tape. Color: White with satin finish.



14CP UTILATUB® COMBO

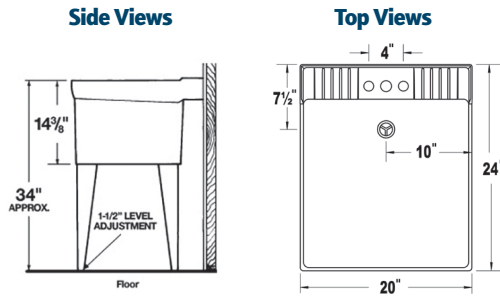
| | | | | |
|------|--------|-----|-----|-------|
| 14CP | Single | 23" | 25" | 11 ½" |
|------|--------|-----|-----|-------|

20-Gallon Capacity
Two holes predrilled



Includes Standard Faucet

General: Furnish and install as shown on plans, UTILATUB® Laundry/Utility Tub Model 14CP as manufactured by E. L. Mustee & Sons, Inc. Model 14CP—shall be one-piece molded Co-PolyPure™ tub, complete with drain, faucet, supply lines, P-Trap, Teflon® tape. Color: White with satin finish.



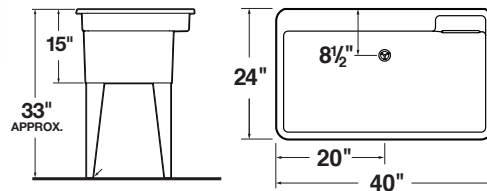
Includes a Pull Out Faucet!

General: Furnish and install as shown on plans, UTILATUB® Laundry/Utility Tub Model 19CFP, as manufactured by E. L. Mustee & Sons, Inc. Tub shall be one-piece molded construction using structural thermoplastic with matched metal molds under extreme heat and pressure. 19CFP Combo kit to include: Swivel faucet with 24" long pull-out spout and lever handles; 1 1/2" P-trap with 12" tailpiece; and two flexible, 20" long braided supply lines. Tub to include integrally molded drain assembly, stopper, and floor mounting hardware. Shall meet ANSI Specification Z 124-2022. Color: White.

| Model | Style | Width (A) | Length (B) | Drain (C) |
|-------|-------|-----------|------------|-----------|
|-------|-------|-----------|------------|-----------|

19CFP UTILATUB® COMBO

| | | | | |
|-------|--------|-----|-----|-----|
| 19CFP | Single | 20" | 24" | 10" |
|-------|--------|-----|-----|-----|



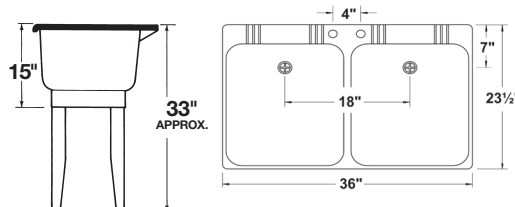
Includes a Pull Out Faucet!

General: Furnish and install as shown on plans, BIGTUB™ UTILATUB® Utility Tub Model _____ (28CF) as manufactured by E.L. Mustee & Sons, Inc. Tub shall be one-piece molded polypropylene with matched metal molds. 28CF Combo kit to include: Swivel faucet with 24" long pull-out spout and lever handles; 1 1/2" P-trap with 12" tailpiece; and two flexible, 20" long braided supply lines. 28CF to include steel legs with adjustable levelers; a 1 1/2" Molded-in drain and Drain stopper. 36-Gallon capacity. Shall meet ANSI Specification Z 124-2022 Color: White. Weight: 23 lbs.

28CF BIGTUB™ UTILATUB® COMBO

| | | | | |
|------|--------|-----|-----|--------|
| 28CF | Single | 40" | 24" | 8 1/2" |
|------|--------|-----|-----|--------|

36-Gallon Capacity
Must drill holes



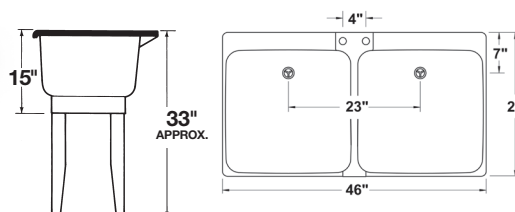
Includes Standard Faucet

General: Furnish and install as shown on plans, UTILATWIN® Laundry/Utility Tub Model 22C, as manufactured by E. L. Mustee & Sons, Inc. Model 22C consists of molded Co-PolyPure™ dual tub, joined by molded bracket, complete with twin drain, faucet, supply lines, P-Trap, Teflon® tape and floor hardware. Color: White with satin finish.

22C UTILATWIN® COMBO

| | | | | |
|-----|--------|-----|---------|-----|
| 22C | Double | 36" | 23 1/2" | 18" |
|-----|--------|-----|---------|-----|

31-Gallon Capacity
Two holes predrilled



Includes Standard Faucet

General: Furnish and install as shown on plans, UTILATWIN® Laundry/Utility Tub Model 24C, as manufactured by E. L. Mustee & Sons, Inc. Model 24C consists of molded Co-PolyPure™ dual tub, joined by molded bracket, complete with twin drain, faucet, supply lines, P-Trap, Teflon® tape and floor hardware. Color: White with satin finish.

24C UTILATWIN® COMBO

| | | | | |
|-----|--------|-----|-----|-----|
| 24C | Double | 46" | 25" | 23" |
|-----|--------|-----|-----|-----|

41-Gallon Capacity
Two holes predrilled



99 & 98 DURAPAN™ WASHER AND WATER HEATER PANS

Protects your belongings from water damage due to an overflowing clothes washer or hot water heater.

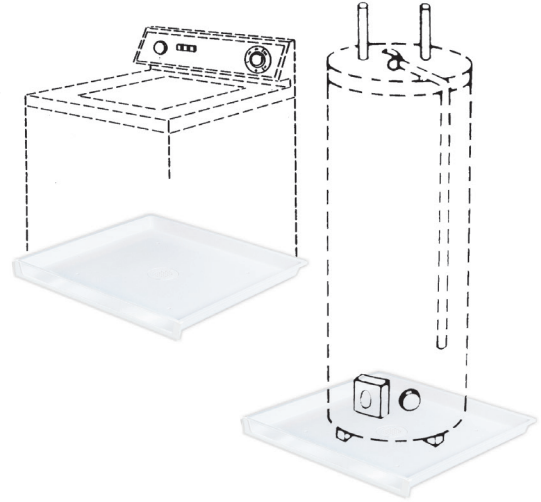


Model 99—center drain for installation directly over 2" ABS, PVC (Sch. 40) or iron drain pipe.

Model 98—furnished outlet fitting may be installed on bottom or any side for connection to 1" PVC drain pipe.

Features

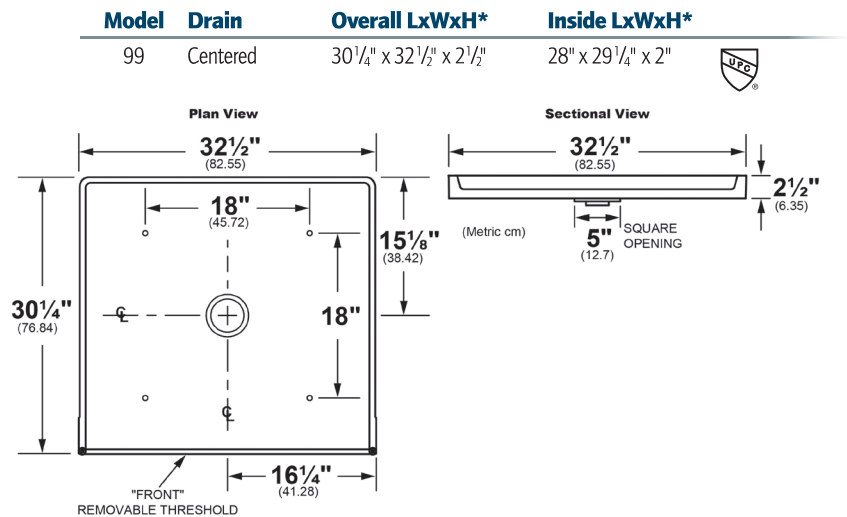
- Removable front to simplify washer placement
- Reinforced design provides strength
- Securable to the floor to prevent movement
- Mold and mildew-resistant, easy to clean



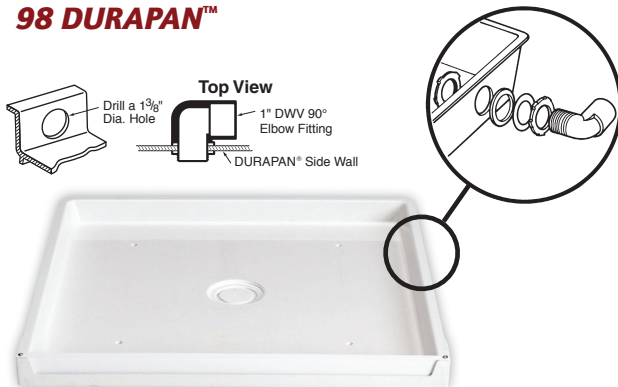
99 DURAPAN™



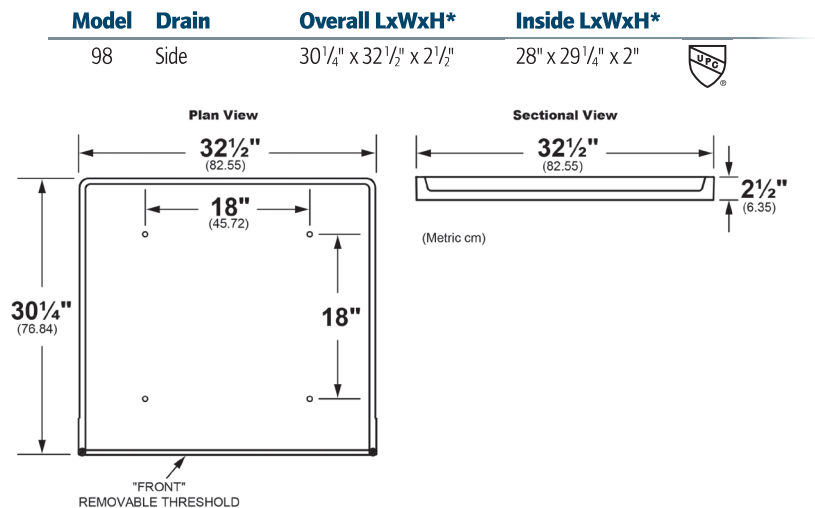
Model 99



98 DURAPAN™



Model 98



General: Furnish and install as shown on plans, DURAPAN™ Model: _____, as manufactured by E. L. Mustee & Sons, Inc. Models 99 and 98—one-piece compression molded fiberglass, using matched metal molds under extreme heat and pressure. Size: 30"x32". Shoulder will be no less than 2 1/2" high. Removable threshold with water tight seal secured by stainless steel screws into threaded brass inserts. Mounting screws and anchors furnished to secure base to floor. Model 99 shall include IAPMO® Listed drain assembly for installation of 2" iron, PVC or ABS DWV (Schedule 40) sanitary waste pipe. Model 98 shall include 1" DWV 90° elbow fitting. Shall meet ASTM E-84. Color: White.

* L=Length (left to right); W=Width (front to back); H=Height (from floor surface)

96 & 95 DURAPAN™ WASHER PANS

96 DURAPAN™

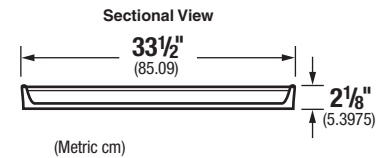
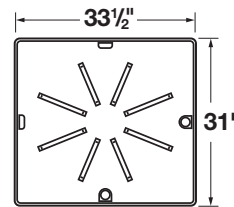
Model 96—furnished outlet fitting may be installed on bottom or any side for connection to 1" PVC drain pipe leading to drain.

Features

- Extra large for larger washing machines
- Mold and mildew-resistant
- Easy to clean
- Co-PolyPure™ thermoplastic



Model 96



| Model | Drain | Overall LxWxH* | Inside LxWxH* |
|-------|----------------|------------------------|--------------------|
| 96 | Side or Bottom | 31" x 33 1/2" x 2 1/8" | 29" x 31 1/2" x 2" |

General: Model 96—one-piece molded Co-PolyPure™, using matched metal molds. Shall include one 1" PVC fitting. Color: White. Install in compliance with local codes.

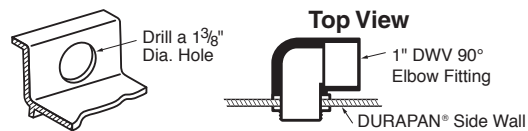
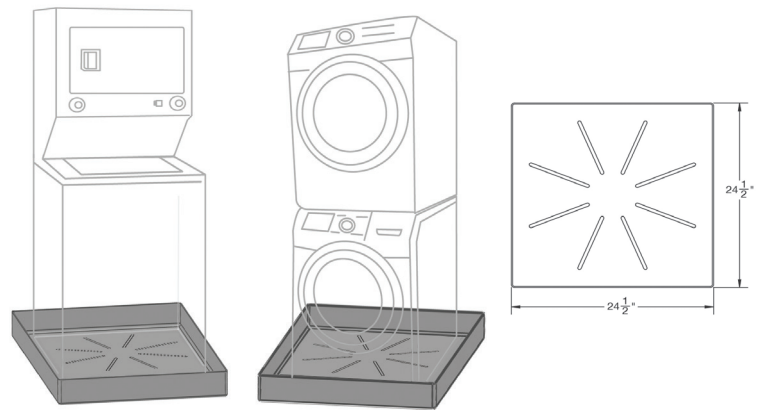
95 DURAPAN™ Compact Washing Machine Pan

The Mustee 95 DURAPAN™ Washing Machine Pan was designed as a solid washer pan for compact combination and stacked washer/dryers in high rise apartments and condos.

This high strength, impact-resistant molded pan features a 2 1/4" tall curb with a 1" 90 degree PVC elbow drain fitting for drainage.

Features

- Protects from water damage
- Includes 1" 90 degree PVC elbow drain fitting
- Prevents washer from marring the floor surface
- Mold/mildew resistant and easy to clean
- Installs easily
- Ideal for 2nd/multilevel buildings



Includes a solvent welded 90 degree PVC elbow which can be positioned anywhere on the side of back walls. The elbow connects with 1" PVC pipe (not included) to enable access to remote drain.

| Model | Drain | Overall LxWxH* | Inside LxWxH* |
|-------|----------------|----------------------------|----------------|
| 95 | Side/Back Wall | 24 1/2" x 24 1/2" x 2 1/4" | 24" x 24" x 2" |

General: Furnish and install as shown on plans DURAPAN™ Washing Machine Pan, Model 95, as manufactured by E. L. Mustee & Sons, Inc. One-piece molded Structural Thermoplastic. Shoulder will be no less than 2 1/4" high. Shall include drain assembly for connection to 1" 90 degree PVC elbow drain fitting. Color: White.

* L=Length (left to right); W=Width (front to back); H=Height (from floor surface)



MOP SERVICE BASINS

Mustee's extra-tough mop service basins and companion products have long been the preferred choice of specifying architects and engineers.

Whether installed in a factory, hospital, school, office building or even in a garage, work room or basement, Mustee's line of Mop Service Basins include the features users appreciate most. The rugged, easy to install and perfectly functional...Mustee's line of Mop Service Basins will deliver years of service.

Features

- One-piece molded from high impact resistant DURASTONE® fiberglass
- Elevated, self-draining shelf (Model 65M) and removable strainer
- Integral molded-in drain with seal for 3" ABS, PVC (Sch. 80) or cast iron included
- Available drain seals for connecting 2" pipe or 3" soil pipe
- Numerous mop basin accessories also available

Code Accepted

Mustee's Mop Service Basins meet or exceed performance requirements:

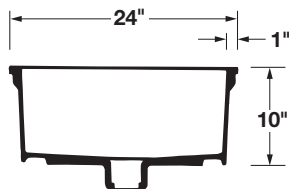
- International Association of Plumbing and Mechanical Officials (IAPMO®) Listed
- Warnock Hersey® (Canada) Listed – CSA Test Standards: Mop Basins – #B45.0
- American National Standards Institute (ANSI) – Specification Z 124-2022
- American Society of Testing and Materials (ASTM) – E-84
- CAN/ULC S102-07 Burn and Smoke Test



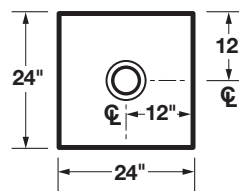
63M Mop Basin – 24" x 24" x 10"



Sectional Views

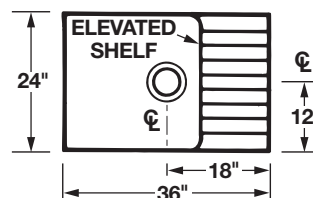
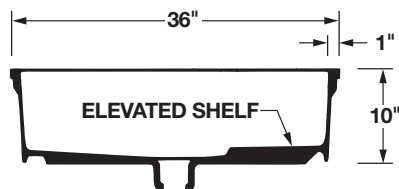


Top Views



| Model | Length | Width |
|-------|--------|-------|
| 63M | 24" | 24" |

65M Mop Basin – Elevated Shelf, 24" x 36" x 10"

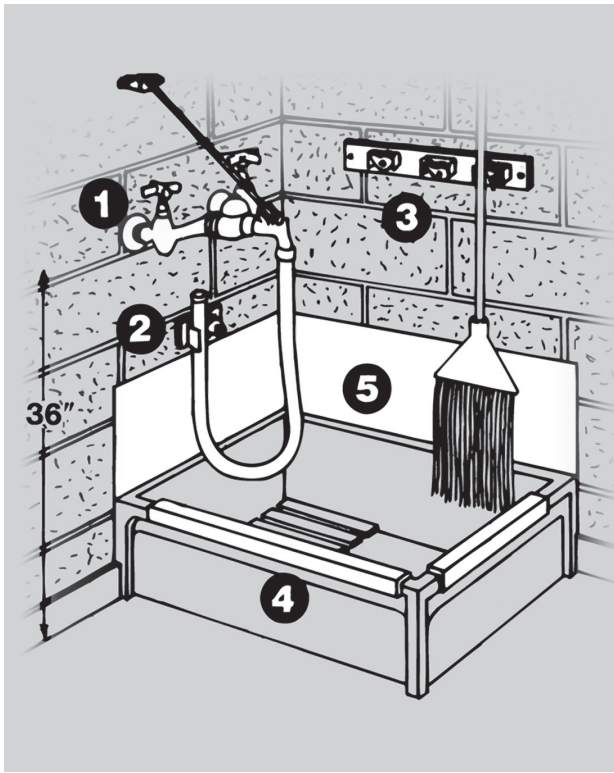


| Model | Length | Width |
|-------|--------|-------|
| 65M | 24" | 36" |

General: Furnish and install as shown on plans, Mop Service Basin Model: _____, as manufactured by E. L. Mustee & Sons, Inc. Unit to be one-piece molded construction by matched metal molds under extreme heat and pressure using fused natural crushed stone with polyester resin. Models shall have integrally molded drain assembly with drain seal and strainer for connection to 2" or 3" iron, ABS or PVC pipe.

Model 63M—10" high with 1" wide shoulder, drain accommodates 3" pipe.

Model 65M—10" high with 1" wide shoulder and integrally molded self-draining shelf, drain accommodates 3" pipe.

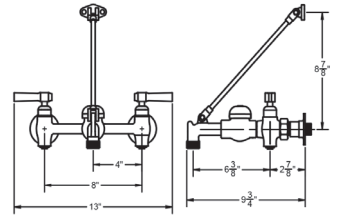


- 6 OPTIONAL SEALS** – For installations with following pipe, order separately.
- 65.308 – for 2" PVC, ABS and iron
 65.309 – for 3" PVC, ABS and iron, included with mop basin
 65.311 – for 3" soil pipe (no hub)

MOP SERVICE BASIN ACCESSORIES

To complete a commercial or residential mop service basin installation, specify and install Mustee's mop service faucet and companion products listed below.

- 1 63.600A SERVICE FAUCET** – Chrome plated brass service sink faucet, $\frac{1}{2}$ " pipe eccentric inlets on 8" centers. Vacuum breaker integral stops, chrome plated (H&C) handles, $\frac{3}{4}$ " hose end spout with pail hook, top reinforcing bar and mounting bracket. Shall meet ANSI Specifications A112.1.1, Section 2.9 and A112.18.1M, CSA Listed. **ANSI**



- 2 65.700 HOSE and HOSE HOLDER** – Heavy-duty $\frac{5}{8}$ " diameter, reinforced 31" rubber hose with brass couplings on one end. Spring loaded, molded rubber hose holder mounts on stainless steel wall plate.



- 3 65.600 MOP HANGER** – Three spring-loaded rubber holders mounted to 3" x 22" stainless steel wall plate. Wall anchors and mounting screws included.

- 4 BUMPER GUARDS** – Protect rims, snap-on

High impact resistant vinyl

63.401 – 20 $\frac{3}{4}$ " long white, fits Models 63M and 65M
 65.403 – 32 $\frac{3}{4}$ " long white, fits Model 65M

Stainless steel

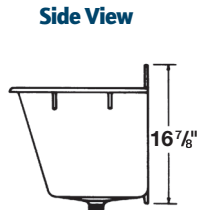
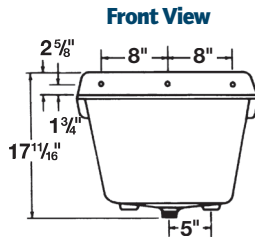
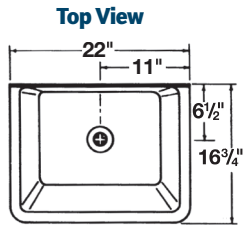
63.403 – 20 $\frac{3}{4}$ " long, fits Models 63M and 65M
 65.404 – 32 $\frac{3}{4}$ " long, fits Model 65M

- 5 DURAGUARD™ WALL GUARDS** – Protect wall surfaces, 12" height, 20 gauge, #304 stainless steel.

67.2424 – two panels and bracket for 24"x 24" corner
 67.2436 – two panels and bracket for 24"x 36" corner

16 SERVICE MOP SINK

Wall-mounted mop sink installs anywhere, including the utility room, basement, garage or outdoors. Ideal for cleaning large utensils. Molded-in drain assembly for standard $1\frac{1}{2}$ " trap.



| Model | Length* | Width* |
|-------|--------------------|--------|
| 16 | 16 $\frac{3}{4}$ " | 22" |

12-Gallon Capacity

* Length (front to back); Width (left to right).

General: Furnish and install as shown on plans, UTILATUB® Mop Sink Model 16, as manufactured by E. L. Mustee & Sons, Inc. One-piece molded construction using structural Co-PolyPure™ thermoplastic, complete with molded-in drain assembly for $1\frac{1}{2}$ " traps, wall mount.



DURASTALL® FREE-STANDING SHOWER STALL

Few could argue about the benefits of having an extra shower at home, in a cabin, pool side, etc. ...but, only Mustee free-standing shower stall delivers the best in features, benefits, durability and quality!



80, 140 DURASTALL®

| Model | Nom. Size | Type Base | A | B | C | D |
|-------|-----------|-----------|--------------------|--------------------|---------------------|-----|
| 80 | 32" x 32" | Standard | 32 $\frac{5}{8}$ " | 75 $\frac{3}{8}$ " | 16 $\frac{5}{16}$ " | 24" |
| 140 | 36" x 36" | Standard | 36 $\frac{5}{8}$ " | 75 $\frac{3}{8}$ " | 18 $\frac{5}{16}$ " | 28" |

General: Furnish and install as shown on plans, a free-standing DURASTALL® Shower Stall Model: _____, as manufactured by E. L. Mustee & Sons, Inc. Consist of three, white high-gloss thermoplastic walls, molded top frame, rigid aluminum front supports, one-piece wrap-around railing with built-in soap dish and container. Skid-resistant floor with drain assembly, shower head and valve, shower curtain and rod, plus assembly hardware.

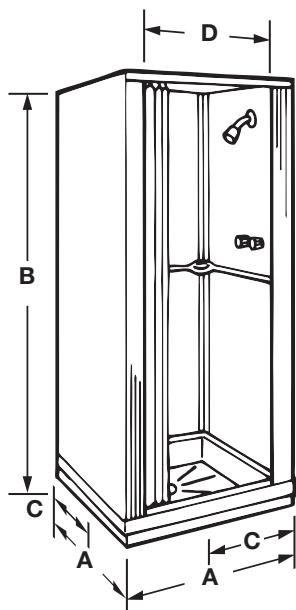
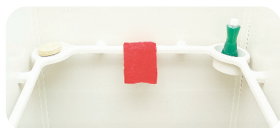
30, 68 DURASTALL®

| | | | | | | |
|----|-----------|----------|--------------------|--------------------|---------------------|-----|
| 30 | 30" x 30" | Standard | 30 $\frac{1}{8}$ " | 73" | 15 $\frac{1}{16}$ " | 24" |
| 68 | 32" x 32" | Standard | 32 $\frac{5}{8}$ " | 74 $\frac{1}{4}$ " | 16 $\frac{5}{16}$ " | 24" |

General: Furnish and install as shown on plans, a free-standing DURASTALL® Shower Stall Model: _____, as manufactured by E. L. Mustee & Sons, Inc. Consist of three, white, high-gloss thermoplastic walls, molded top frame, rigid thermoplastic front supports, one-piece, wrap-around railing with built-in soap dish and container. Skid-resistant floor with drain assembly, shower head and valve, shower curtain and rod, plus assembly hardware.

Features

- Standard components include...
 - Slip-resistant floor with drain
 - Shower valve
 - Curtain
 - Safety railing with molded in soap dish and shampoo holder
- Bases include a PVC drain for connection to a 2" (Sch. 40) ABS, PVC or iron DWV pipe
- Knock-down construction makes portability extremely easy
- Shower stall materials are mold and mildew-resistant



Accessories

Shower Doors — Install to Open from Either Side

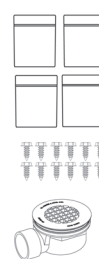
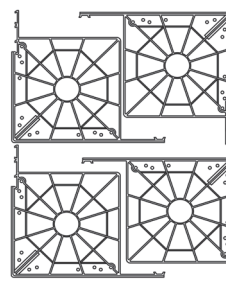
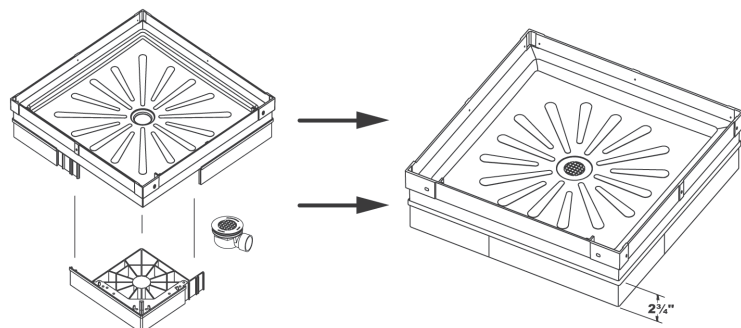
Shower doors are available, featuring aluminum frames with magnetic latch mount to open left or right.

| Model | Opening | Height | Fits DURASTALL® Models |
|---|---------|--------|------------------------|
| GLASS DOOR — obscure, tempered safety glass panel with aluminum frame | | | |
| 88.700 | 24" | 64" | 80 |
| 48.700 | 28" | 64" | 140 |

Extended Base Kit — Extension raises the base up 2 $\frac{3}{4}$ "

Add this kit to the bottom of the standard base included in the Mustee Model 80 or 140 DURASTALL® Shower Stall (bought after 6-01-16) to raise the base up by 2 $\frac{3}{4}$ ". This will allow you to run a 1 $\frac{1}{2}$ " PVC pipe (not included) from under the shower floor, on top of the sub-floor to an existing drain. The drain can be positioned so the pipe can come out from under the shower floor in one of four directions.

| Model | Max. Size | Fits DURASTALL® Models |
|--------|-------------------------------|------------------------|
| 86.500 | 36" x 36" x 2 $\frac{3}{4}$ " | 80, 140 |



Kit includes:
4 Extension Blocks
1 82.400A Drain Kit

WARRANTY

We warrant to the original consumer user of the products of E.L. Mustee & Sons, Inc. for a period of one year from the date of the sale to the consumer that our products will be free of defects in material and workmanship.

Our liability under this Warranty shall be to either repair or replace the product with an identical or reasonably equivalent product. In the alternative, we may refund, in full, the actual purchase price if the repair is not commercially reasonable or possible within a reasonable time and we are unable to supply a replacement product. We shall not be responsible for any labor, damages or installation costs.

This Warranty does not apply to our products which are not installed in accordance with our instructions and local building codes. This Warranty is not applicable if our product has been removed from the original installation or has been subject to accident, abuse or misuse.

After one year from the date of sale, we disclaim all implied warranties of merchantability and fitness for a particular purpose. The foregoing constitutes our entire obligation under this warranty and we make no other express or implied warranties. We further exclude this warranty all consequential and incidental damages.

This Warranty gives you a specific legal right, and you may have other rights which vary from state to state.

A claim under this warranty may be made through your distributor, dealer or contractor or by writing to our office. Claim must be accompanied by written proof of purchase and may be subject to inspection by our agent or representative – E.L. Mustee & Sons, Inc., 5431 West 164th Street, Brook Park, OH 44142-1586

NOTES

[illegible]

Quality Products for Residential, Commercial, Healthcare & Institutional Applications

The E.L. Mustee & Sons, Inc. product line meets numerous applications within four broad markets...residential, commercial, healthcare and institutional. We invite you to review the complete line of Mustee products from bathtubs, shower walls and bases to laundry/utility tubs, safety grab bars, and mop service basins.



Residential – from new single-family and cluster homes to older homes and apartment bath renovations.



Healthcare – includes hospitals, health care facilities, adult communities, assisted living facilities, apartments and more.



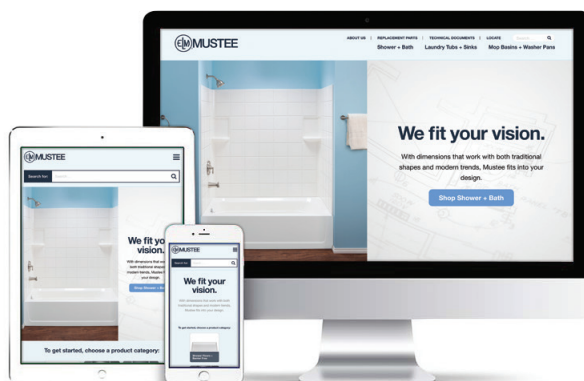
Commercial – includes offices, industrial buildings, hotels and motels.



Institutional – includes schools, colleges, libraries, laboratories and more.

Visit us on the web at: **www.mustee.com**

Access our website easily from all of your devices.



E. L. Mustee & Sons, Inc.

5431 West 164th St.
Brook Park, OH 44142

Phone: 216-267-3100

Fax: 216-267-9997

Email: info@mustee.com



To reorder this catalog specify ADV-500

Notice: Our continuous commitment to product improvement may result in changes to product specifications without notice.
© 2024 E. L. Mustee & Sons, Inc. Patented and patents pending. ADI/06-24. Made and Printed in U.S.A. Printed on Recycled Paper 