



National Comfort Products

Thru-the-Wall Packaged Heating & Cooling



COMFORT PACK Universal



Go Thru-the-Wall

Parts
Lookup



Cross
Reference



Nomenclature 2025

CP	8	5	18	38	U	A	-	A	1	1
Product	Heat Type	Refrigerant	Clg. Capacity	Htg. Capacity	Series	Generation		Option		Factory Use
CP = Comfort Pack	8 = 80% Gas 9 = 95% Gas E = Electric	5 = R454B	09 = 0.75 Ton 12 = 1.0 Ton 18 = 1.5 Ton 24 = 2.0 Ton	28 = 28 MBH 38 = 38 MBH 51 = 51 MBH 64 = 64 MBH	U = Universal			A = Standard B = Slotted Door C = w/o Rear Grille D = Both B&C		

*CPE Heating Capacity can be found on page 4

Thru the Wall Comfort Pack Universal

The Comfort Pack Universal fits the industry standard Universal wall opening (28" w x 43" h) for Thru-the-Wall gas and electric package units with a self-contained cooling chassis, offering easier installation, access, and efficiency.

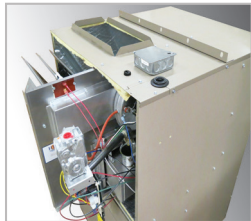
Models range from 0.75 to 2 tons and come pre-charged and pre-wired. The heating sections have an input range up to 64,000 Btuh for gas and 15 KW for electric.

All Comfort Pack Universal Units meet Department of Energy requirements.

Thru-the-Wall avoids costs associated with new building code requirements for flammable refrigerants.



Comfort Pack Universal Advantages



Gas Non Condensing
Furnace Models

80% AFUE
Slide-Out Furnace
with Stainless
Steel Heat Exchanger



Gas Condensing
Furnace Models

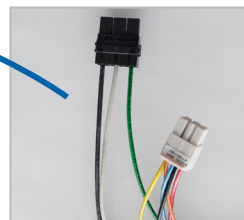
Up to 95% AFUE
Slide-Out Furnace
with Stainless
Steel Heat Exchanger



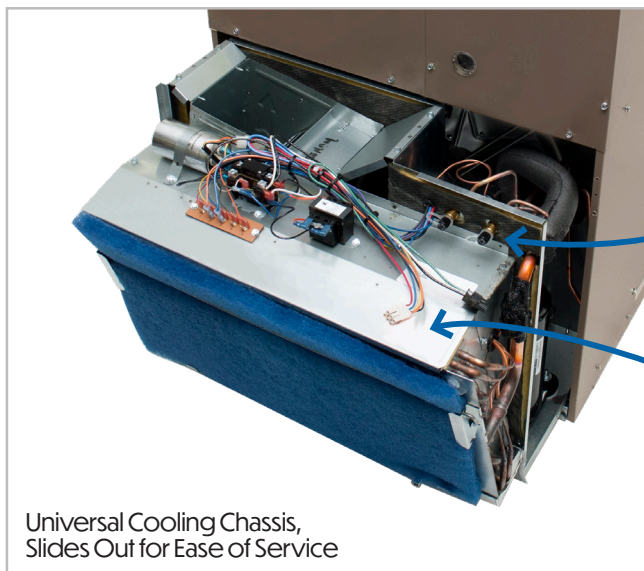
Auxiliary Drain Provides
Built In Condensate
Overflow Protection



Easy Access Refrigeration
Service Ports Utilizing
Low Loss Coremax
Technology



Polarized Molex Plugs
Allowing for Simple
Disconnect from Cabinet



Universal Cooling Chassis,
Slides Out for Ease of Service



Take Back

Outdoor Living

Utilize every space in your design with
the Comfort Pack Universal.

Performance Data

CP8 Models

Model	Nominal Cooling Tons	Cooling Btu/h	Sensible Btu/h	SEER2	Charge R-454B (Oz.)	Heater Input (Btu/h)	Heater Output (Btu/h)	Shipping Weight (lbs)
CP850928UA	0.75	8,900	6,500	11.7	26	28,000	22,400	315
CP851228UA	1.0	11,800	8,500	12.3		38,000	30,400	
CP851238UA						28,000	22,400	
CP851828UA	1.5	17,600	12,900	12.5	38	38,000	30,400	325
CP851838UA						51,000	40,800	
CP851851UA						64,000	51,200	
CP851864UA						28,000	22,400	
CP852428UA	2.0	22,400	15,600	12.3	36	38,000	30,400	350
CP852438UA						51,000	40,800	
CP852451UA						64,000	51,200	
CP852464UA								

CP9 Models

Model	Nominal Cooling Tons	Cooling Btu/h	Sensible Btu/h	SEER2	Charge R-454B (Oz.)	Heater Input (Btu/h)	Heater Output (Btu/h)	AFUE	Shipping Weight (lbs)
CP950925UA	0.75	8,900	6,500	11.7	26	25,000	23,750	95%	315
CP951225UA	1.0	11,800	8,500	12.3		32,000	30,400		
CP951232UA						25,000	23,750		
CP951825UA	1.5	17,600	12,900	12.5	38	25,000	23,750	93%	325
CP951832UA						32,000	30,400		
CP951843UA						43,000	40,850		
CP951850UA						50,000	46,500		
CP952425UA	2.0	22,400	15,600	12.3	36	25,000	23,750	95%	350
CP952432UA						32,000	30,400		
CP952443UA						43,000	40,850		
CP952450UA						50,000	46,500		

CPE Models

Model	Nominal Cooling Tons	Cooling Btu/h	Sensible Btu/h	SEER2	Charge R-454B (Oz.)	Shipping Weight (lbs)
CPE50900UA	0.75	8,900	6,500	11.7	26	315
CPE51200UA	1.0	11,800	8,500	12.3		
CPE51800UA	1.5	17,600	12,900	12.5	38	325
CPE52400UA	2.0	22,400	15,600	12.3	36	350

CPE Models

Model	Heat Kit	Heating Btu/h		Heating kW		Heating Amps	
		208V	230V	208V	230V	208V	230V
CPE50900UA	N/A	N/A	N/A	N/A	N/A	N/A	N/A
CPE51200UA	CPEHK03	8,900	10,900	2.61	3.19	12.54	13.89
CPE51800UA	CPEHK05	13,100	16,000	3.84	4.69	18.45	20.38
CPE52400UA	CPEHK07	18,300	22,400	5.36	6.56	25.78	28.54
CPE51800UA	CPEHK10	26,000	32,000	7.62	9.38	36.63	40.77
CPE51800UA	CPEHK15	39,000	48,000	11.43	14.06	54.94	61.15
CPE52400UA							



Electrical Data

CP8 & CP9 Models

Model	Compressor		Condenser Motor			Blower Motor		Total Amps	MCA	MOP
	RLA	LRA	HP	RLA	LRA	HP	RLA			
CP*509**UA	3.5	21.8	1/4	2.0	--	1/3	2.6	8.1	9.0	15
CP*512**UA	4.7	28.7		1.8	3.6	1/3	2.6	9.3	10.5	
CP*518**UA	6.3	32.7		2.0	--	1/2	3.8	10.7	12.3	
CP*524**UA	8.4	41.2						14.2	16.3	

CPE Models

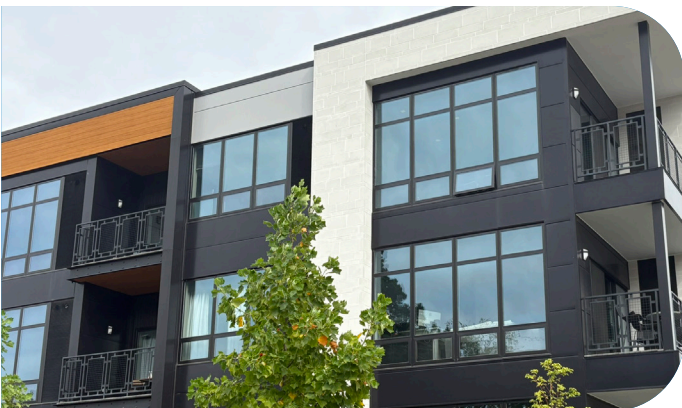
Model	Compressor		Condenser Motor			Blower		Heat Kit	Total Amps		MCA		MOP	
	RLA	LRA	HP	RLA	LRA	HP	RLA		208V	230V	208V	230V	208V	230V
CPE50900UA	3.5	21.8	1/4	2.0	--	1/3	2.6	N/A	8.1	8.1	9.0	9.0	15	15
								CPEHK03	15.2	16.5	19.0	20.6	20	25
								CPEHK05	21.0	23.0	26.3	28.7	30	30
								CPEHK07	28.4	31.2	35.5	39.0	40	40
								CPEHK10	39.3	43.3	49.2	54.1	50	60
								N/A	9.3	9.3	10.5	10.5	15	15
CPE1200UA	4.7	28.7	1/4	2.0	--	1/3	2.6	CPEHK03	15.2	16.5	19.0	20.6	20	25
								CPEHK05	21.0	23.0	26.3	28.7	30	30
								CPEHK07	28.4	31.2	35.5	39.0	40	40
								CPEHK10	39.3	43.3	49.2	54.1	50	60
								N/A	10.7	10.7	12.3	12.3	15	15
								CPEHK03	15.2	16.5	19.0	20.6	20	25
CPE51800UA	6.3	32.7	1/4	1.8	3.6	1/3	2.6	CPEHK05	21.0	23.0	26.3	28.7	30	30
								CPEHK07	28.4	31.2	35.5	39.0	40	40
								CPEHK10	39.3	43.3	49.2	54.1	50	60
								CPEHK15	38.6	42.5	48.1	53.0	50	60
								N/A	20.2	22.2	24.1	26.5	25	30
								CPEHK15	14.2	14.2	16.3	16.3	25	25
CPE52400UA	8.4	41.2	1/4	2.0	--	1/2	3.8	CPEHK03	16.4	17.7	20.5	22.1	25	25
								CPEHK05	22.2	24.2	27.8	30.2	30	35
								CPEHK07	29.6	32.4	37.0	40.5	40	45
								CPEHK10	40.5	44.5	50.7	55.6	60	60
								CPEHK15	38.8	42.6	49.1	54.0	50	60
								N/A	20.4	22.3	24.6	27.0	25	30

*All units rated for 208/230 Volts Single Phase 60 Hz (208/230-1-60)



Air Flow Data

All Models							
Models	Color	Speed Tap	ESP (in. wc) / CFM				
			0.1	0.2	0.3	0.4	0.5
CP*509**UA	Red	1	760	745	730	715	700
	Yellow	2	650	640	630	615	600
	Blue	3	560	535	520	510	500
	Black	4	440	425	410	390	370
	Orange	5	390	360	330	310	290
CP*512**UA	Red	1	760	745	730	715	700
	Yellow	2	650	640	630	615	600
	Blue	3	560	535	520	510	500
	Black	4	440	425	410	390	370
	Orange	5	390	360	330	310	290
CP*518**UA	Red	1	760	745	730	715	700
	Yellow	2	650	640	630	615	600
	Blue	3	560	535	520	510	500
	Black	4	440	425	410	390	370
	Orange	5	390	360	330	310	290
CP*524**UA	Red	1	870	850	830	810	790
	Yellow	2	760	745	730	715	690
	Blue	3	680	665	650	630	610
	Black	4	590	565	540	525	510
	Orange	5	440	425	410	400	390



Options & Accessories

CPE & CP8	CPLG	Architectural Louver Grille
	CPLG-S	Architectural Louver Grille for Sleeve
	CPLG-P	Architectural Louver Grille Painted
	CPLG-SP	Architectural Louver Grille for Sleeve Painted
	CPSG-P	Stamped Grille Painted
CP8	14208343	LP Kit (38 MBTU)
	14208344	LP Kit (51 MBTU)
	14208345	LP Kit (64 MBTU)
CP9	CPLGX	Architectural Louver Grille
	CPLGX-S	Architectural Louver Grille for Sleeve
	CPLGX-P	Architectural Louver Grille Painted
	CPLGX-SP	Architectural Louver Grille for Sleeve Painted
	CPSGX-P	Stamped Grille Painted
	14508008	25K LP Conversion Kit
All		43K LP Conversion Kit* (35,000 input)
		50K LP Conversion Kit
	CPWS	Wall Sleeve (Unassembled)
	CPWSA	Wall Sleeve Adapter (Unassembled)
	A	Standard
	B	Slotted Door
	C	with out Rear Grille
	D	Both B & C

NOTE: National Comfort Products offers Architectural Louver Grilles for all models. Outdoor grilles provided by others must be approved by National Comfort Products to maintain unit performance and warranty coverage. See Comfort Pack Architectural Options Specification Sheet for more details.

COMFORT
PACK

Integrate the

COMFORT PACK

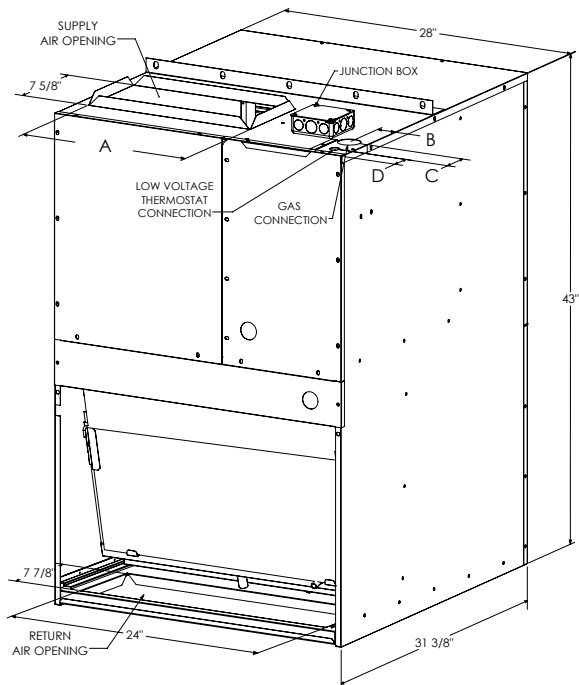
into your design

seamlessly.

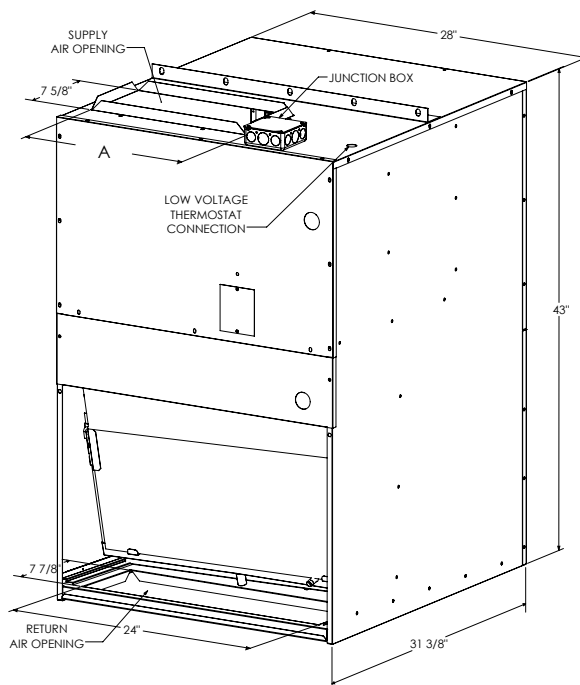
Unit Dimensions

Unit	A	B	C	D
CP8	15 13/16"	1 3/4"	2 9/16"	1 13/16"
CP9	17 13/16"	2"	2 3/16"	1 13/16"
CPE	15 13/16"	N/A	N/A	N/A

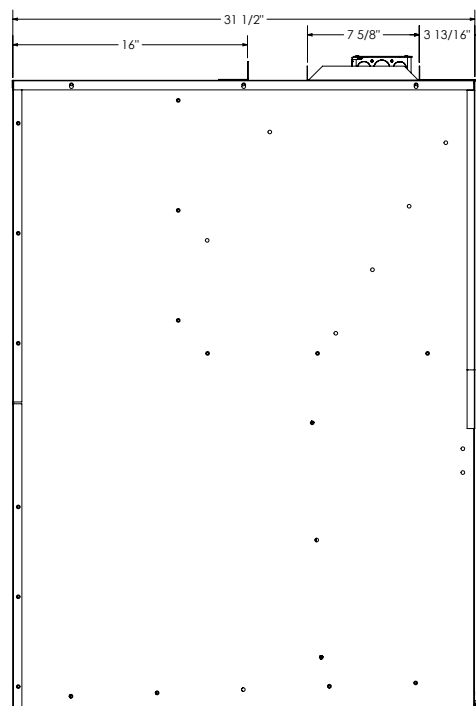
CP8 & CP9



CPE



CP8 CP9 CPE Side View



NOTE: Unit must be mounted a minimum of 8 inches above finished floor. See installation guide for vent termination clearances



National Comfort Products

A Division of National Refrigeration and Air Conditioning Products, Inc.

539 Dunksferry Road · Bensalem, PA 19020-5908

(800) 523-7138

www.nationalcomfortproducts.com

