

B-LINE
SERIES

A photograph of three construction professionals on a job site. Two men in orange safety suits and yellow hard hats are looking at a woman in a white hard hat and a high-visibility vest. They are gathered around a table, looking at a set of blueprints. One man is holding a walkie-talkie. The background is slightly blurred, showing more of the construction site.

Mechanical, plumbing,
heating, air conditioning
and refrigeration solutions

Productivity IQ >>

Work smarter, not harder.

EATON

Powering Business Worldwide

Work smarter, not harder.

Speed installation, reduce complexity and maximize the return on your investment.

Innovative, time-saving solutions to maximize your ROI

At Eaton, we listen to your challenges and offer products, services and tools to give you that competitive edge. Our solutions help reduce complexity, save time and materials and help maximize your profit.

Our Productivity IQ education site provides white papers, success stories, videos and more to help you streamline your process to help you win more bids.

Eaton.com/Productivity-IQ

Quality and craftsmanship mean our products are built to last

At Eaton, we are proud of the demanding standards of research, design, engineering and manufacturing that go into every one of our products. We are a leading ISO Certified 9001:2008 manufacturer of support systems for good reason: our products are of the highest quality, so you can rely on them for years of dependable service. Exceptional quality and value – that's what our customers have come to expect.

Services to help reduce complexity

Engineering services — We offer engineering services to support project sales, pre-bid support, layout and design, stamped calculations, engineered solutions and installation certification.

Pre-bid services — We offer multiple services such as kitting, pre-fabricated assemblies, cut-to-length strut and more.

Eaton.com/BlincEngServices

Tools to help make your job easier

CoSPEC™ Specifier Center — A one-stop design resource for our products. With nearly 100 different CAD, BIM, and graphic formats, customers can easily select, view and download our products in 2D and 3D.

Eaton.com/CoSPEC

Design Center — Our Design Center allows you to access AutoCAD® details and other CAD formats, install various design software programs, download specifications, view issues from our Technical Paper Series and utilize various calculation programs.

Eaton.com

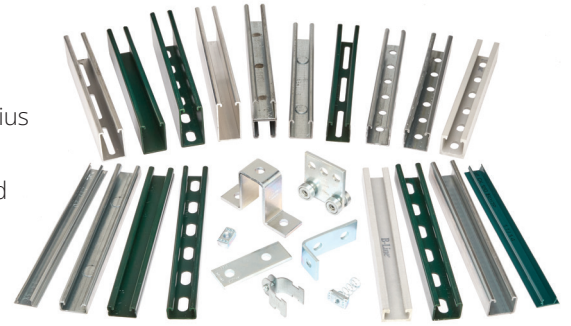
TOLBrace™ — Our user-friendly software assists designers to evaluate seismic brace orientations, structural attachments and calculate appropriate load capacities for fire sprinkler systems. TOLBrace also creates a complete submittal package, in conformance with NFPA 13, 2022, UL, FM, OSHPD/HCAI, IBC or CBC.

tolbrace.com

For more information, visit Eaton.com/mechanical.

Strut System Solution

- Complete line of strut and strut fittings
- Manufactured with structural grade steel
- Full traceability with brand stamping every 18 inches, including part number, material number and heat code number
- Roll to length strut
- Miter cutting and radius capabilities
- Special packaging and bundling
- Dura Green™ finish



Innovative, time-saving solutions

Strut systems

The system includes a full line of solid, slotted hole (SH) and long slotted hole (S) channel, and other hole patterns, as well as full line of fittings, clamps and beam supports. The system is available in wide variety of materials and finishes including pre-galvanized, stainless steel, hot dip galvanized, Dura Green paint and other paints.



We also offer strut cut-to-length services. Contact us to learn more.

Conduit trapeze support (BCTS)

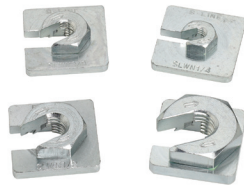
- Up to 50% faster to install than traditional methods
- Up to 75% less hardware required than traditional methods
- Conduit holes automatically align conduit across the trapeze
- Eliminates the need for conduit clamps at every support location



Eaton.com/BCTS.

Buzznut™ slip on lock nut washer

- Combination design reduces on-site material handling
- Can be easily removed and adjusted
- Replaces jam nuts in high vibratory applications
- Load capacities similar to all threaded rod
- Available in Zinc Plated or 316 stainless steel



Combo nut washer

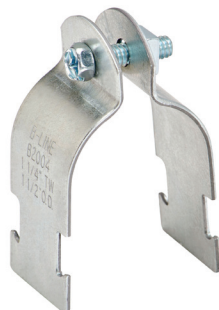
- Helps reduce overall installation time
- Combination design reduces the number of parts
- Serrated flange negates the need for a flat washer
- Allows for easy adjustment when installed in channel
- Provides quick attachment for threaded rod
- Able to install using just one hand



Universal pipe clamp

Easy to install and designed to clamp and support 4" and smaller conduit and pipe.

- UL listed
- Includes combination recess hex head machine screw and square nut.
- Also available pre-assembled



To explore the full line of strut systems, visit Eaton.com/strutsystems

Pipe Hanger Solutions

- Complete line of pipe hangers and supports
- Stainless steel, plain, Dura-Copper™, galvanized, zinc, hot dip galvanized, Dura Green™ and Fiberglass
- Most manufactured in our U.S. facilities
- Complete fire protection solution

Innovative, time-saving solutions

Snap 'N Shield™ solution

- Certification: Meets UL94 HB flammability standards
- Fast, easy installation - snaps onto channel, no tools required
- Integrated slots for liquid line tie wraps
- Snap-on design helps eliminate shield movement, helping prevent insulation damage that can lead to costly leaks



Eaton.com/snap-n-shield

Slide-Rite™ B3100 clevis hangers

- Unique design of the upper portion of the hanger constrains swivel of the hanger bottom making installation easier
- Design aligns bolts for quicker overhead installation
- SLIDE-RITE Clevis Hanger design, for sizes 2, 2½, 3, 4, 5 & 6



CPVC solutions

- Support CPVC and Steel piping in different orientations as a support, guide, or surge restraint
- Beveled edges eliminate potential for pipe damage
- No sharp edges and no compressive loading on the fitting which allow the pipe to expand and contract safely
- Single fastener point simplifies installation

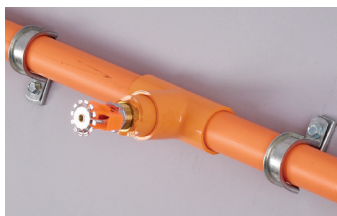


Fig. 22L2

To explore the full pipe hanger offering, visit Eaton.com/pipehangers



Kwik-Clip™ mounting clip

- One piece design helps reduce installation time; no tools or hardware required to install
- Non-metallic design eliminates metal-to-metal contact which helps prevent galvanic corrosion
- Working temperature range of -40°F to +275°F
- Meets UL2043 requirements for plenum rating and UL94 HB flame rating



TOLCO Fig. 200 trimline adjustable band hanger

- Knurled swivel nut design permits hanger adjustments after installation
- This hanger is also available with felt lining (TOLCO Fig. 200F), plastic coated (TOLCO Fig. 200C) and with a removable nut for sizes 1" and 2" (TOLCO Fig. 200S)



TOLCO Fig. 29

- Double offset hanger and restrainer for CPVC plastic pipe and IPS steel pipe
- UL Listed as a hanger and restraint to support fire sprinkler systems
- Offset edge helps eliminate abrasion
- Attaches easily to wood structure



Seismic Solutions

Eaton offers time-savings solutions for mechanical, electrical, plumbing and fire sprinkler solutions.

- UL and FM ratings
- Cable bracing and rigid bracing solutions
- Structural attachment solutions
- Full offering of seismic anchors
- Many feature integrated labor-saving features

TOLCO Fig. 980 universal swivel sway brace attachment

Structural or transitional attachment component of a longitudinal or lateral sway brace assembly intended to be combined with a 1" through 2" "bracing pipe" and TOLCO "brace pipe" attachment to form a complete bracing assembly. Mounts to any surface angle. Break-off bolt head helps assure verification of proper installation.

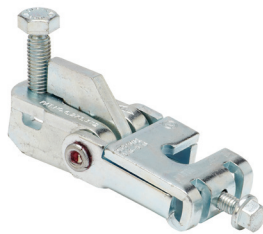


TOLCO Fig. 981 universal sway brace lower attachment

Designed to attach to the hanger rod and is used with strut channel or pipe as the brace member.

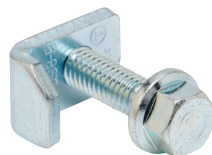
The unique "Fast-Attach" yoke design fits multiple rod sizes and allows for quick installation of the yoke to the hanger rod for both new and retrofit installations. Tightening the cone point set screw until the head breaks off ensures proper installation of the rod at the correct torque.

The stackable design allows installation of both lateral and longitudinal braces to be easily installed on a single hanger rod, with no disassembly.



TOLCO Fig. 98B rod stiffener

Helps reduce inspection time with the signature break-off torque bolt that provides visual verification of proper torque and installation. The Fig. 98B secures channel to 3/8"-16 to 7/8"-9 hanger rod creating a stiff vertical brace. The same SKU covers the full range of hanger rod sizes, helping reduce complexity on the job site.



Seismic cable kit solution

The B-Line series seismic bracing cable kit system is up to 50% faster to install over traditional cable bracing methods. Tested by an independent lab, the seismic cable kits are designed to brace non-structural equipment and distribution systems to help minimize damage in a seismic event.

Eaton.com/seismic-cable



TOLCO Fig. 1001 sway brace attachment

Designed for bracing pipe against sway and seismic disturbance. The pipe attachment component of a sway brace system, Fig. 1001, is used in conjunction with a Fig. 900 series fitting and joined together with bracing pipe per NFPA 13, forming a complete sway brace assembly.

Can be used to brace schedule 7 through schedule 40 IPS. Field adjustable, making critical pre-engineering of bracing pipe length unnecessary. Unique design requires no threading of bracing pipe. Comes assembled and ready for installation. Fig. 1001 has built-in visual verification of correct installation.

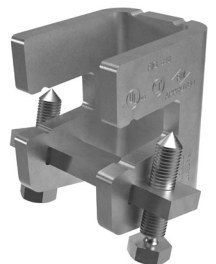


TOLCO Fig. 828 Universal Sway Brace Attachment to Steel

The new TOLCO Fig. 828 is designed to attach sway bracing and hanger assemblies to structural members using a secure non-friction connection without drilling or welding. Secures brace to structure either across or along the beam.

Break-off head set screw helps ensure verification of proper installation torque. One size accommodates all TOLCO Fig. 900 series sway brace attachments, which can be secured with an included flange nut.

Tested and UL Listed to the new UL203A standard for a 2.2 safety factor rating and improved load ratings.



Support Solutions

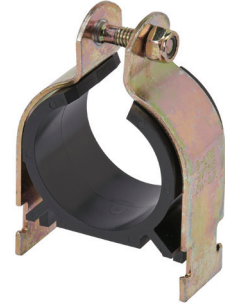
Vibration isolation hangers and pads

- Various sizes and thickness and materials, to isolate equipment and panel boards from vibration
- Non-skid: Thread surfaces resist walking
- Durable: Material is ozone resistant Neoprene rubber blend and cork
- Easy cut pad can be field adjusted to varying sizes, custom fit sizes on the job site



Vibra-clamp solution

The Vibra-clamp solution is easy to install and secures tubing firmly to strut channel helping dampen vibration and noise. It helps eliminate galvanic corrosion due to metal to metal contact, and resists most industrial oils and solvents.



TOLCO Fig. 74 upper attachment

The Fig. 74 structural attachment of a branch line restraint assembly meets the requirements of NFPA 13 for sway bracing of fire sprinkler systems. It can be used with multiple types of fasteners to attach to concrete, steel or wood structures, and it fits both 3/8" and 1/2" all threaded rod. It is UL listed as a restraint for lateral bracing and FM approved as a sway brace attachment.



AWSD series - Power Stud+ SD2 seismic wedge anchors

Fully threaded, torque-controlled, wedge anchor; designed for consistent performance in cracked and uncracked concrete.

- For use in concrete, structural sand lightweight concrete, and concrete over metal deck.
- Nominal drill bit size is the same as the anchor diameter.
- ICC-ES listed, ESR-2502, Category 1
- Zinc plated carbon steel body with stainless steel expansion clip from premium performance.
- Qualified for seismic and wind loading



Dura-Blok rooftop supports

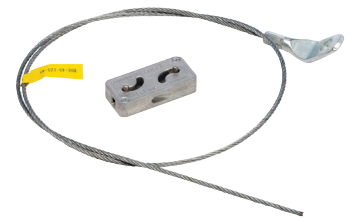
When used in combination with B-Line series strut systems or pipe hanger systems, Dura-Blok supports offer a total solution for rooftop applications such as solar PV mounting systems, piping, HVAC equipment, roof top walkway, ducts, conduit and cable tray supports.

Made of 100% recycled rubber, the Dura-Blok support has no sharp or abrasive edges and does not penetrate the roof, helping extend the life of the roof. Supports are suitable for any type roofing material or other flat surfaces. For sloped roofs, see B-Line series adjustable hinge fitting B634.



KwikWire hanging system

An ideal alternative to jack chain or all threaded rod, the KwikWire hanging system quickly installs around beams with no drilling required. Simple height adjustments can be made by releasing the clamp locking tab, with no tools required. Spools of wire can be cut to length in field, helping reduce waste and upfront planning.



Eaton.com/KwikWire

Eaton.com/Dura-Blok

View the full support systems product line, visit Eaton.com/supportsystems.

Trust your seismic engineering needs to the TOLCO seismic experts

Codes and requirements differ by location and project. Our seismic experts understand the codes, and can help you reduce risk and meet your project requirements.

De-Risk your electrical, mechanical, fire protection, HVAC project today by following these easy steps:

Step 1: Request a quote

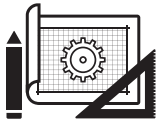
Simply contact us at Blineseismicsupport@Eaton.com and include your project drawings, specifications, and bid date.



- Don't have drawings? Arrange a site visit with your team
- Services include: a detailed review of project requirements, professional engineer certification, OSHPD OPM/HCAI OPM pre-approval, full submittal package... and more
- Products include: full breadth of TOLCO™ seismic bracing and B-Line series cable tray, pipe hangers, vibration isolation and strut systems
- Products meet or exceed all building code requirements
- Products are designed to help deliver lowest total installed cost solution

Step 2: Review seismic layout drawings

Once you are ready to proceed with your project, our engineering team develops detailed seismic layouts on the project drawings.



- We determine the minimum number of brace locations to meet local codes and specifications
- Drawings are stamped by a Professional structural engineer
- We allow for up to 15% of brace location changes and 1 layout revisions at no charge
- You can rely on our quoted number from estimation to execution

Step 3: Product delivered to jobsite for install

Upon approval of the layout drawings, our products are delivered to the job site through your preferred distributor.



- No need for kits and laying out the braces, each type of brace assembly is exactly the same
- Products ship as full upper and lower attachment assemblies
- Keep it simple and only use what you need
- Return unused material to your distributor, or keep for the next project and reduce your material cost
- We make inspection easier, all products feature visual verification break away bolts to help ensure correct torque

From Mechanical, Electrical, Plumbing, Fire Protection to HVAC Equipment, Eaton is your one-source solution for engineering services and product solutions.

Contact us at Blineseismicsupport@Eaton.com

For more information,
visit Eaton.com/TOLCO.

For more information,
visit **Eaton.com**

U.S. Customer Service Center is staffed Monday through Friday from 7 a.m. to 5 p.m. Central Standard Time.

Eaton
509 West Monroe Street
Highland, IL 62249
United States
800-851-7415

Eaton
1000 Eaton Boulevard
Cleveland, OH 44122
United States
Eaton.com

B-Line Division
509 West Monroe Street
Highland, IL 62249

© 2024 Eaton
All Rights Reserved
Printed in USA
Publication No. SA310005EN
August 2024

Eaton is a registered trademark.

All other trademarks are property
of their respective owners.

Follow us on social media to get the
latest product and support information.

