

# duraflo®

## PRODUCT CATALOGUE



[www.duraflo.com](http://www.duraflo.com)

canplas

## **Welcome to Duraflo<sup>®</sup>**



Canplas, manufacturer of Duraflo ventilation products, has over 50 years of plastics manufacturing experience. This expertise allows Duraflo to continue as the innovation leader in roof ventilation. Throughout our history Duraflo has listened to you, the customer, to create solutions to meet your building needs. In developing and maintaining an open dialogue with both our internal and external partners, we have created a wide variety of unique products second to none in the marketplace.

**canplas<sup>®</sup>**

### **Roof Vent Products**

**- pg. 4**

### **Ridge Vent Products**

**- pg. 12**

### **Exhaust Vent Products**

**- pg. 14**

### **Roof Flashing Products**

**- pg. 20**

### **Gable Vent Products**

**- pg. 24**

### **Siding & Soffit Vent Products**

**- pg. 26**

### **Ventilation Calculator**

**- pg. 30**

### **Index**

**- pg. 31**

For more information on  
Duraflo products call

**Canada:** 1-800-461-3361

**USA:** 1-800-501-5018

or visit [www.duraflo.com](http://www.duraflo.com)

# Why Ventilate with **duraflo**®?

3

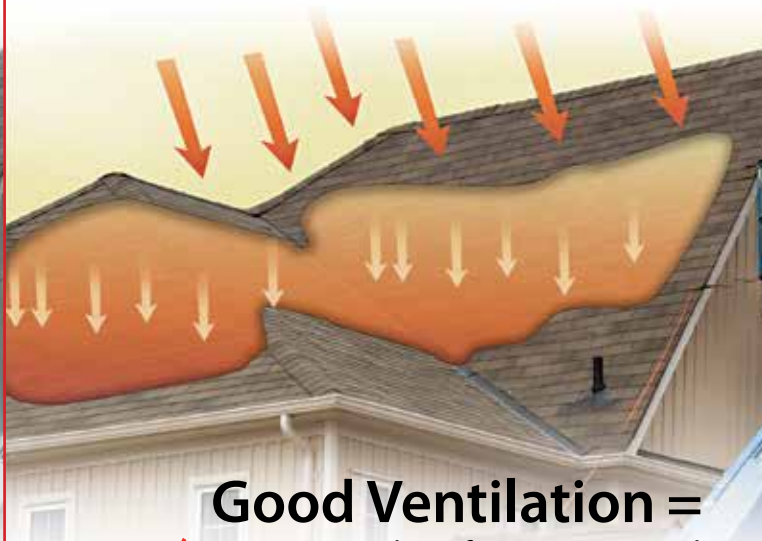
## To Effectively Remove Winter Moisture

Without proper ventilation heat from the home can build in the attic space, then cool and condense, soaking the insulation and ceilings with moisture



## To Drastically Remove Summer Heat

Without proper ventilation trapped summer heat builds up in the attic warming the living space below



## To Protect Shingle Life Span

Proper Ventilation eliminates extreme temperature ranges, assuring the life span of the shingles



## Good Ventilation =

- ✓ 1. Proper number of vents positioned correctly along the ridge line
- ✓ 2. Proper soffit ventilation to allow cool air to enter through the soffit replacing the warm air that rises through the roof vents
- ✓ 3. Did you know? Ideally, your attic temperature should approximate the outside temperature

**We Know Ventilation!**

# Roof Ventilation

4

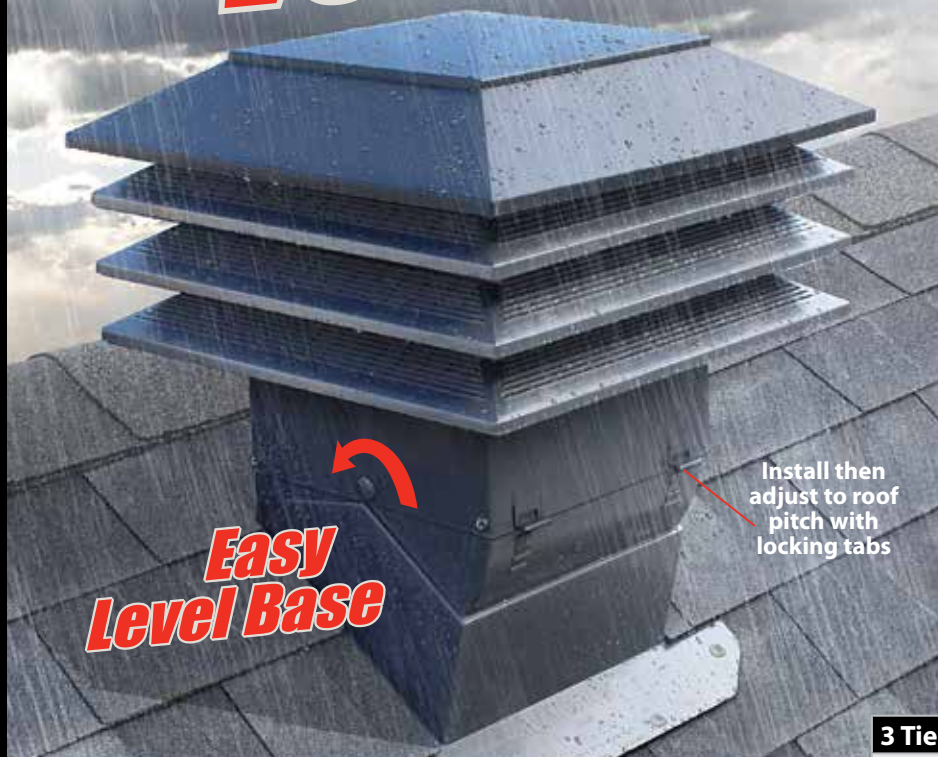


## duraflo<sup>®</sup> PRO Ventilator

- **Extreme Weather Protection for the home**
- **"Easy Level" Adjustment System reduces installation time**
- **High Performance airflow**

The PRO Ventilator's "Easy Level" features are engineered with the contractor in mind. The lightweight, durable construction and rotating pitch adjustment system are designed to simplify the installation process saving you time and money.

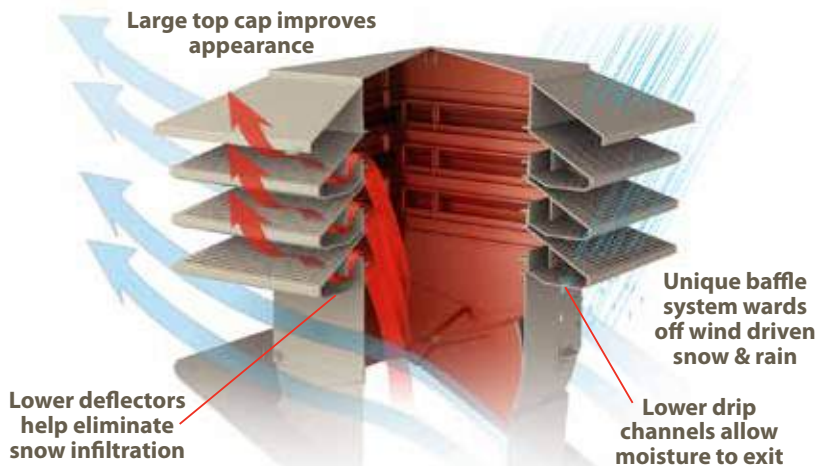
- Rotatable top with locking pitch tabs accommodate 3/12 to 12/12 roof pitches
- 55% lighter than traditional tall vent
- 48 to 130 Sq. In. NFA Venting
- Crush, dent & corrosion resistant
- Extreme cold & heat resistant
- UV & Cold impact resistant to -40
- Available in Black, Brown, Grey & Weatherwood
- U.S. Patent 9,523,509
- CDN Patent 2,792,461



**Easy Level Base**

Install then adjust to roof pitch with locking tabs

Large top cap improves appearance



Lower deflectors help eliminate snow infiltration

Lower drip channels allow moisture to exit

Resistant to:



WIND



SNOW



RAIN



UV



CRUSHING & DENTING

Constructed for:



COLD INSTALLATIONS



LIGHTWEIGHT HANDLING



CATEGORY 2 HURRICANE RATED



CSA APPROVAL

### 3 Tier Model: 130 sq. in. NFA

DESCRIPTION	PART #	CTN. QTY.	SKID
Black	60PRO150BL	1	8
Brown	60PRO150BR	1	8
Grey	60PRO150G	1	8
Weatherwood	60PRO150WW	1	8

### 2 Tier Model: 95 sq. in. NFA

DESCRIPTION	PART #	CTN. QTY.	SKID
Black	60PRO140BL	1	8
Brown	60PRO140BR	1	8
Grey	60PRO140G	1	8
Weatherwood	60PRO140WW	1	8

### 1 Tier Model: 48 sq. in. NFA

DESCRIPTION	PART #	CTN. QTY.	SKID
Black	60PRO130BL	1	12
Brown	60PRO130BR	1	12
Grey	60PRO130G	1	12
Weatherwood	60PRO130WW	1	12

www.duraflo.com

# duraflo® PRO Turbo



- **Extreme Weather Protection**
- **No Maintenance Required**
- **High Performance Airflow**
- **Internal Baffle Protection System**
- **Easy Level Installation**

The PROTurbo combines the field tested benefits of the patented WeatherPRO internal baffle system with multi stage, high volume, airflow for superior attic ventilation.

- Rotatable top with locking pitch tabs accommodate 3/12 to 12/12 roof pitches
- Crush, dent & corrosion resistant
- UV & Cold impact resistant to -40
- Available in Black, Brown, Grey & Weatherwood
- CDN Patents 2,536,023 & 2,803,775
- USA Patent 7,774,023
- CSA Approved

**117 Sq. in. of net free area**

DESCRIPTION	PART #	CTN. QTY	SKID
Black	60PRO117BL	1	12
Brown	60PRO117BR	1	12
Grey	60PRO117G	1	12
Weatherwood	60PRO117WW	1	12

**TDI**

Texas Department of Insurance

**New Easy  
Level Base**



**Resistant to:**



WIND



SNOW



RAIN



UV



CRUSHING  
& DENTING

**Constructed for:**



COLD  
INSTALLATIONS



LIGHTWEIGHT  
HANDLING



CATEGORY 2  
HURRICANE RATED



CSA  
APPROVAL

**We Know Ventilation!**

# Roof Ventilation

6

WeatherPRO® Roof Ventilation

## duraflo®

### Universal

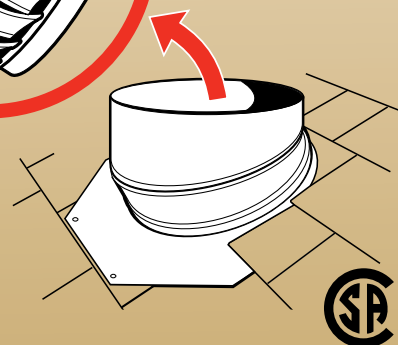
# Turbine Ball Replacement



**Fits 12"**

**& 14" bases**

Replaces traditional "squeaking" turbines easily without removing existing vent base or shingles.



DESCRIPTION	PART #	CTN. QTY	SKID
Black	6001BL	1	24
Brown	6001BR	1	24
Grey	6001G	1	24
Weatherwood	6001WW	1	24

[www.duraflo.com](http://www.duraflo.com)

# duraflo® PRO Slant Back



## The Intake & Exhaust multi task vent

**With the WeatherPRO® Series PRO SlantBack you no longer need to worry about extreme weather. The unique baffle system within the WeatherPRO® Series wards off wind driven snow and rain.**

- CSA Approved
- Patented Baffle System and Moisture Control System
- Eliminates bird nesting
- Cold impact resistant to -40°
- UV resistant polypropylene
- Can be used as an intake vent, when soffit ventilation is not an option
- Suitable for roof pitches from 3/12 to 14/12
- US Patent 9,243,813
- US Patent 9,557,074 B2

**50 Sq. in. of net free area**

DESCRIPTION	PART #	CTN. QTY	SKID
Black	60PRO50SLBL	8	48
Brown	60PRO50SLBR	8	48
Grey	60PRO50SLG	8	48
Weatherwood	60PRO50SLWW	8	48

Warm moist air exits in a chimney like fashion eliminating shingle stains

Moisture Control System directs and deflect precipitation away from vent openings (ribs under lid, textured flange, ribbed baffle walls, lateral flange deflectors)

Offset Vent Throat Position

Unique baffle system wards off wind driven snow and rain

Drainage openings allow for water to escape

**Resistant to:**



WIND



SNOW



RAIN



UV



CRUSHING  
& DENTING

**Constructed for:**



COLD  
INSTALLATIONS



LIGHTWEIGHT  
HANDLING



CATEGORY 2  
HURRICANE RATED



CSA  
APPROVAL

**WeatherPRO® Roof Ventilation**

**We Know Ventilation!**

# Roof Ventilation

8

WeatherPRO® Roof Ventilation

## duraflo® PRO 75



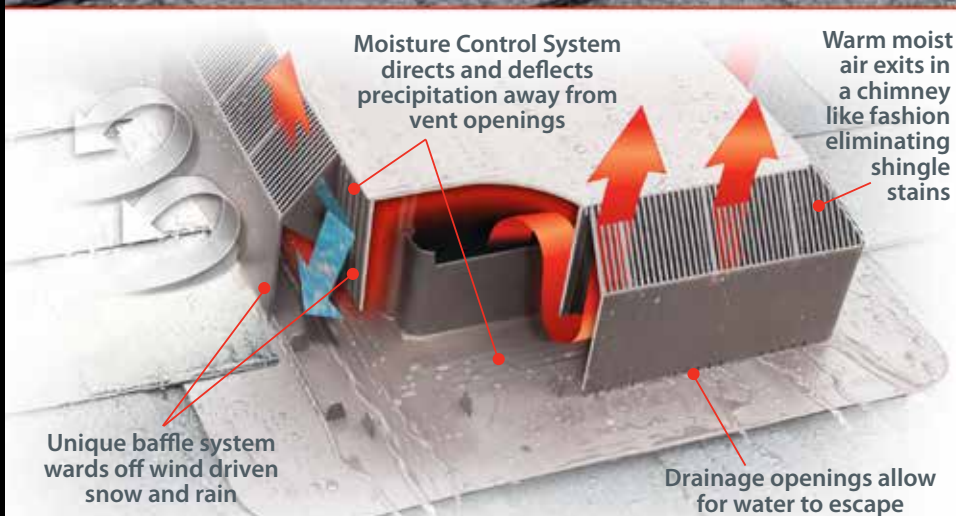
**With the WeatherPRO® Series PRO75 you no longer need to worry about foul weather. The unique baffle system within the WeatherPRO® Series PRO75 wards off driving snow and blistering rain.**

- Eliminates bird nesting
- Cold impact resistant to -40°
- UV resistant polypropylene
- Suitable for roof pitches from 3/12 to 14/12
- CSA Approved

CDN. Patent 2,766,888

**75 Sq. in. of net free area**

DESCRIPTION	PART #	CTN. QTY	SKID
Black	60PRO75BL	4	32
Brown	60PRO75BR	4	32
Grey	60PRO75G	4	32
Weatherwood	60PRO75WW	4	32



**Resistant to:**



WIND



SNOW



RAIN



UV



CRUSHING  
& DENTING

**Constructed for:**



COLD  
INSTALLATIONS



LIGHTWEIGHT  
HANDLING



CSA  
APPROVAL

[www.duraflo.com](http://www.duraflo.com)

# duraflo<sup>®</sup> PRO50



**With the WeatherPRO<sup>®</sup> Series PRO50 you no longer need to worry about foul weather. The unique baffle system within the WeatherPRO<sup>®</sup> Series PRO50 wards off driving snow and blistering rain.**

- Eliminates bird nesting
- Cold impact resistant to -40°
- UV resistant polypropylene
- Suitable for roof pitches from 3/12 to 14/12
- CSA Approved

CDN. Patent 2,364,672

**50 Sq. in. of net free area**

DESCRIPTION	PART #	CTN. QTY	SKID
Black	60PRO50BL	9	54
Brown	60PRO50BR	9	54
Grey	60PRO50G	9	54
Weatherwood	60PRO50WW	9	54

**TDI**

Texas Department of Insurance

Warm moist air exits in a chimney like fashion eliminating shingle stains

Unique baffle system wards off driving snow and blistering rain

Drainage openings allow for water to escape

**Resistant to:**



WIND



SNOW



RAIN



UV



CRUSHING  
& DENTING

**Constructed for:**



COLD  
INSTALLATIONS



LIGHTWEIGHT  
HANDLING

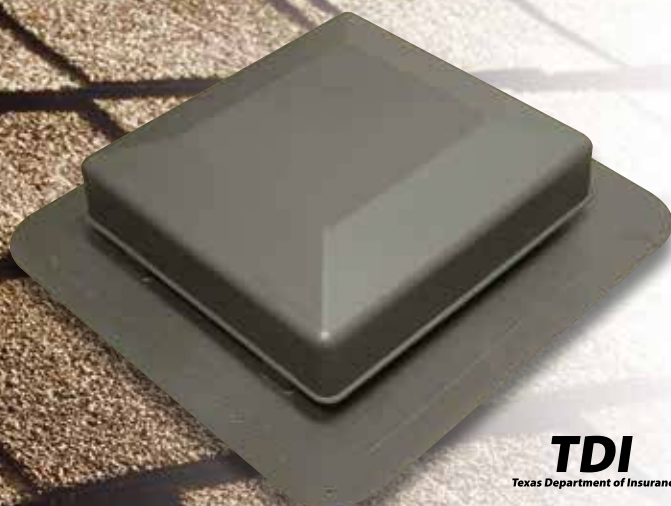


CATEGORY 2  
HURRICANE RATED



CSA  
APPROVAL

**We Know Ventilation!**



**TDI**  
Texas Department of Insurance



## duraflo®

### Square Top Roof Vent

**An attractive low profile style**

- UV resistant polypropylene
- Molded screen to prevent bird nesting
- Angled throat to efficiently deflect water
- Cold impact resistant to -40°
- Suitable for roof pitches from 3/12 to 12/12

**75 Sq. in. of net free area**

DESCRIPTION	PART #	CTN. QTY	SKID
Black	6075BL	5	80
Brown	6075BR	5	80
Grey	6075G	5	80
Weatherwood	6075WW	5	80

**50 Sq. in. of net free area**

DESCRIPTION	PART #	CTN. QTY	SKID
Black	6050BL	10	80
Brown	6050BR	10	80
Grey	6050G	10	80
Weatherwood	6050WW	10	80



## duraflo®

### 6050T Tall Roof Vent

**Works and looks great with wood shakes or shingles**

- UV resistant polypropylene
- Extended throat for ease of installation with shake and shingle
- Cold impact resistant to -40°
- Suitable for roof pitches from 3/12 to 12/12

**50 Sq. in. of net free area**

DESCRIPTION	PART #	CTN. QTY	SKID
Black	6050TBL-	8	64
Brown	6050TBR-	8	64
Grey	6050TG-	8	64
Weatherwood	6050TWW-	8	64



Square back  
assists in weather  
resistance

# duraflo®

## Slant Back Roof Vent

**Ideal for steep pitched roofs**

- Low profile with a slanted back
- Will not scratch, crush or dent
- Suitable for roof pitches from 3/12 to 14/12

**61 Sq. in. of net free area**

DESCRIPTION	PART #	CTN. QTY	SKID
Black	6065BL	12	144
Brown	6065BR	12	144
Grey	6065G	12	144
Weatherwood	6065WW	12	144



**TDI**  
Texas Department of Insurance



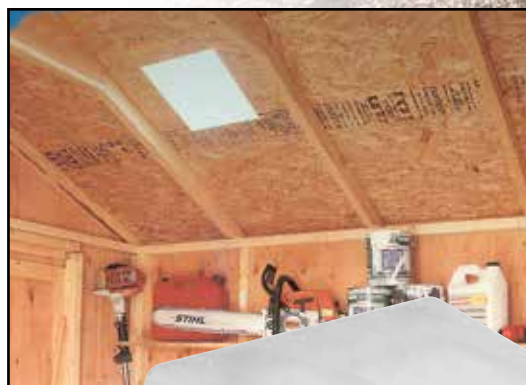
# duraflo®

## Shed Light Roof Vent

**Translucent Skylight Vent**

**A Skylight for Storage Sheds, Garages and Barns**

- 50 & 75 sq. in. of net free area
- Lets in free natural light
- Ventilates hot air and fumes
- Wide flange for ease of installation



**75 Sq. in. of net free area**

DESCRIPTION	PART #	CTN. QTY	SKID
75 sq. in.	5975C	5	80
75 sq. in.	5975B	6	96

**50 Sq. in. of net free area**

DESCRIPTION	PART #	CTN. QTY	SKID
50 sq. in.	5950C	6	96



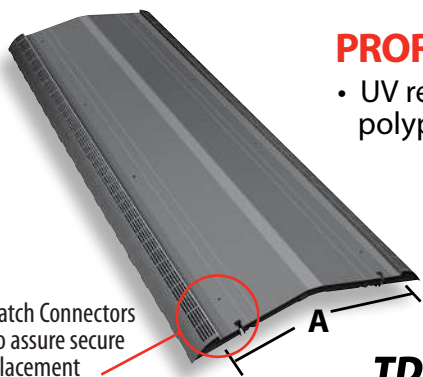
**We Know Ventilation!**

# Ridge Ventilation

12

WeatherPRO® Ridge Ventilation

## duraflo® PRO Ridge



Latch Connectors to assure secure placement

### PRORidge SOLID

- UV resistant polypropylene



TDI  
Texas Department of Insurance

DESCRIPTION	PART #	A	CTN. QTY
Black	6094BL	12-1/4	12



AirFoil  
TECHNOLOGY

### WeatherPRO® baffle system with AirFoil technology

- 18.3 sq. in./lin. ft. of net free area
- UV resistant polypropylene
- Molded nail supports
- Code regulated insect grill
- TriFold flexibility for use on pitches 3/12 to 12/12
- Hand nail only

Nail Gun  
Installation

## duraflo® Ridge Vent

- Internal and Exterior Baffles to prevent wind-driven rain & snow infiltration.
- Supported nailing strip
- Mesh meets CSA standards and provides 14.68 sq. in./lin. ft. of net free area
- Length: 4 ft. • Width: 16"
- Thickness: 5/8"

For use  
on pitches  
3/12 to 16/12



DESCRIPTION	PART #	A	CTN. QTY
Black	6059BL	12-7/8	14



Water drip openings

Latch Connectors to assure secure placement

www.duraflo.com

# duraflo® Ridge Roll

## Externally Baffled

- Nail gun installation
- Embossed nail line for quick application
- Durable and compression resistant
- Externally baffled for powerful protection against rain, snow & insect infiltration
- Available in Filter & Non- Filter
- Nails Included
- 12.75 sq. in./lin. ft. of net free area
- Length: 25 ft. rolls
- Width: 14-3/4"
- Thickness: 5/8"
- TDI approved

DESCRIPTION	PART #	CTN. QTY	SKID
Black	6025BL	1	18
Black w/filter	6025BLF	1	18



CATEGORY 2  
HURRICANE RATED



Internal  
Filter  
Model

**TDI**

Texas Department of Insurance

# duraflo® Ridge Roll

## 100% Natural Fiber

- TDI approved
- Easy installation
- Nails included
- 15 sq. in./lin. ft. of net free area
- Length: 20 ft. rolls
- Width:
  - 60RVA20MET - 11-1/2"
  - 60RVA208 - 8"
  - 60RVA20US - 10-1/2"
- Thickness: 3/4"

DESCRIPTION	PART #	CTN. QTY	SKID
Black	60RVA20MET	1	36
Black	60RVA208	1	-
Black	60RVA20US	1	36



CATEGORY 2  
HURRICANE RATED

**We Know Ventilation!**

# Exhaust Ventilation

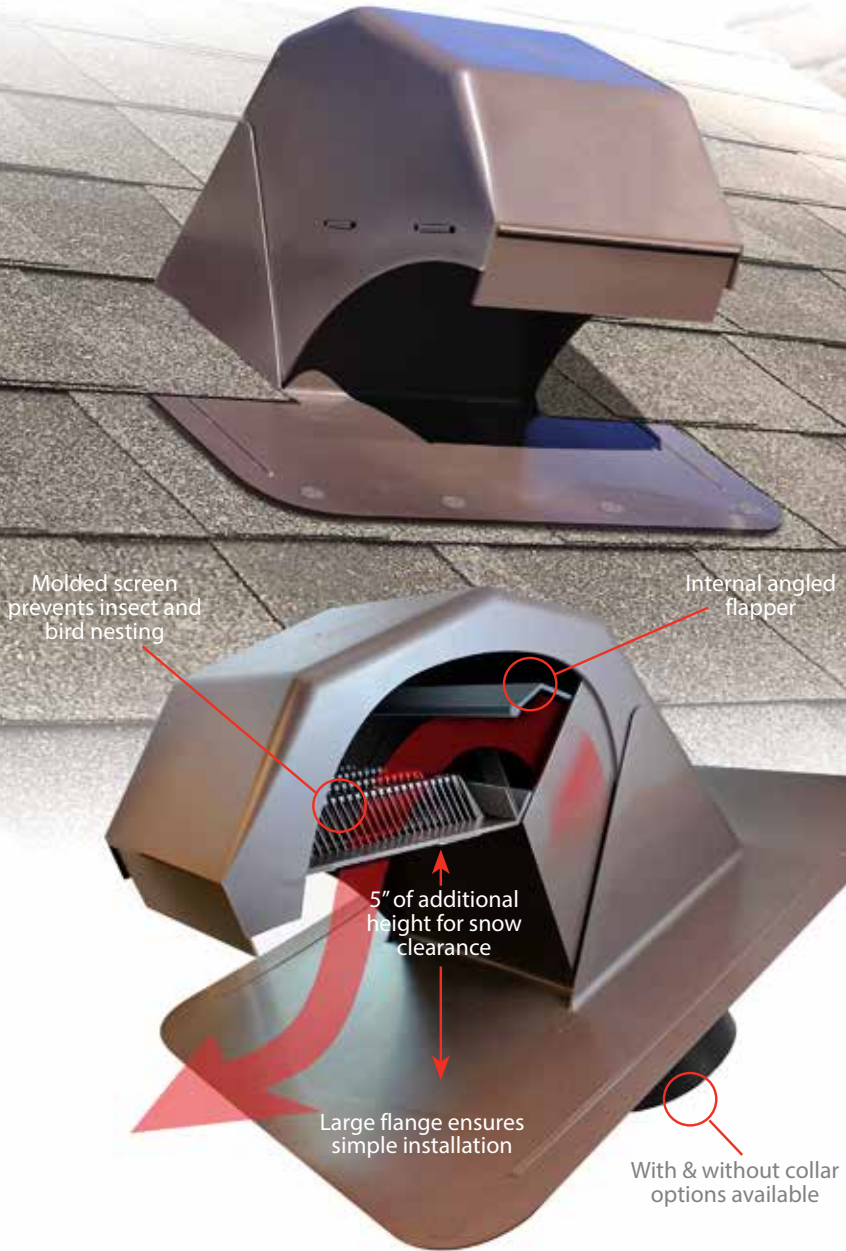
14

## duraflo® Gooseneck ROOF EXHAUST VENT



**For high performance bathroom fans and standard rangehood fans**

- Weather protection with 5" of additional height for snow clearance
- Patented design adds additional weather protection, directs and deflects precipitation away from vent openings
- Flapper can still open with low performance bath fans
- Attaches to 4", 5" or 6" duct
- Additional collar available which fits a 6", 7" or 8" duct
- Available in: black, brown
- 20 sq. in. of net free area if used as an intake vent (remove flapper)
- US Patent 10,267,533



### 60PRO30

#### GOOSENECK BATHROOM EXHAUST VENT - WITH COLLAR

Can be used with standard rangehood fans

DESCRIPTION	PART #	CTN. QTY.	SKID
Black	60PRO30BL	1	24
Brown	60PRO30BR	1	24

### 60PRO31 GOOSENECK BATHROOM EXHAUST VENT - WITHOUT COLLAR

Can be used with standard rangehood fans

DESCRIPTION	PART #	CTN. QTY.	SKID
Black	60PRO31BL	1	24
Brown	60PRO31BR	1	24

### GOOSENECK VENT ADAPTER COLLAR 4", 5", 6"

DESCRIPTION	PART #	CTN. QTY.	SKID
Black	6030-4BC	8	144

Resistant to:



WIND



SNOW



RAIN



UV



CRUSHING & DENTING

Constructed for:



COLD INSTALLATIONS



LIGHTWEIGHT HANDLING



350+ CFM



CSA APPROVAL

www.duraflo.com

Roof Exhaust Ventilation

# duraflo® Gooseneck

## ROOF DRYER EXHAUST VENT

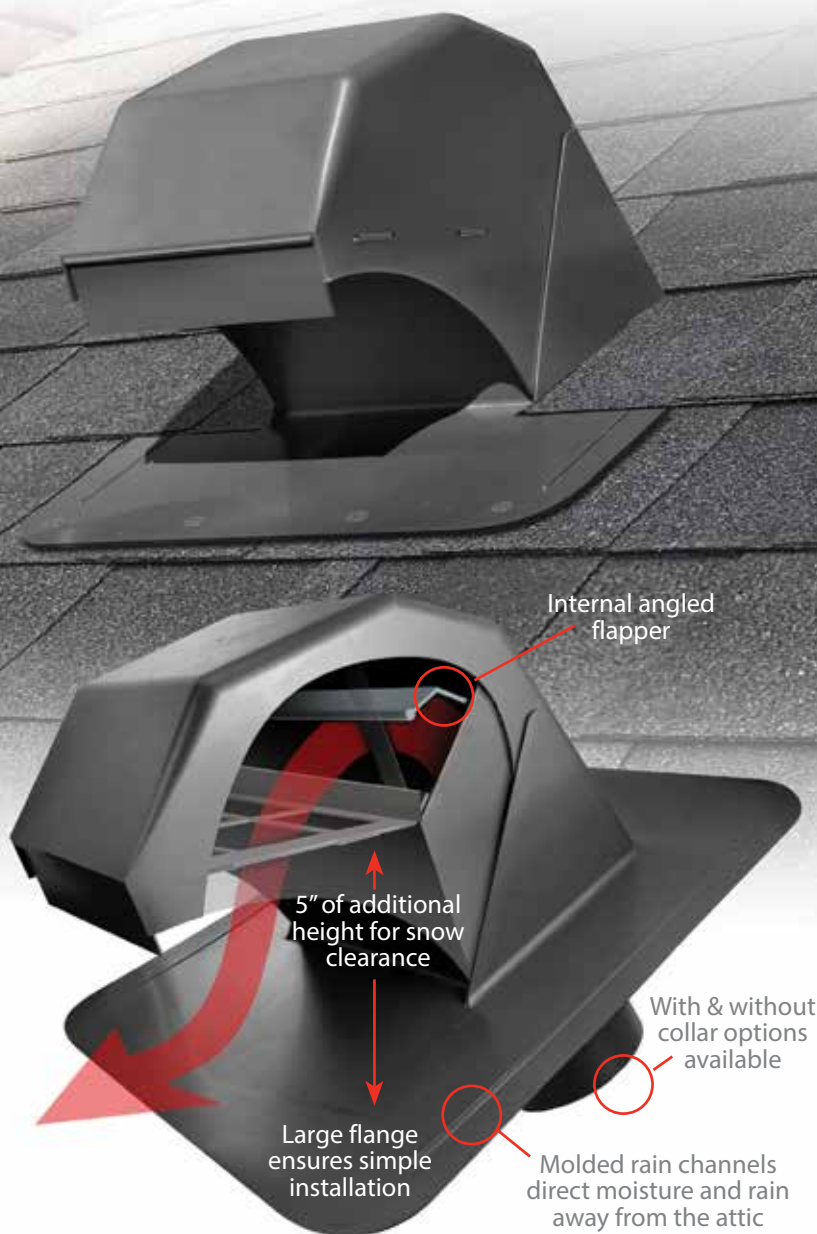


15

Roof Exhaust Ventilation

**Ideal for  
condominiums,  
townhouses,  
apartment buildings  
and homes with  
an upstairs laundry  
room**

- Provides weather protection with 5" of additional height for snow clearance
- Attaches to 4", 5" or 6" duct
- Additional collar available which fits a 6", 7" or 8" duct
- Available in: black, brown
- US Patent 10,267,533



**Resistant to:**



WIND



SNOW



RAIN



UV



CRUSHING  
& DENTING

**Constructed for:**



COLD  
INSTALLATIONS



LIGHTWEIGHT  
HANDLING

### 6032 GOOSENECK ROOF DRYER EXHAUST VENT - WITH COLLAR

DESCRIPTION	PART #	CTN. QTY.	SKID
Black	6032BL	1	24
Brown	6032BR	1	24

### 6033 GOOSENECK ROOF DRYER EXHAUST VENT - WITHOUT COLLAR

DESCRIPTION	PART #	CTN. QTY.	SKID
Black	6033BL	1	24
Brown	6033BR	1	24

### GOOSENECK VENT ADAPTER COLLAR 4", 5", 6"

DESCRIPTION	PART #	CTN. QTY.	SKID
Black	6030-4BC	8	144

**We Know Ventilation!**

# duraflo® Exhaust Ventilation

16

## duraflo® Next Generation Dryer/Bathroom **Exhaust Vent**

Replaces Duraflo  
6008/6010/6011/6012  
and 6013 Vent  
models.

**A combination  
dryer and  
bathroom  
exhaust vent for  
two functions  
in one**

**One SKU for  
two applications**

- grill packed separately from  
vent for use in bathroom vent  
installation or disposed of for  
dryer vent application.

**Meets IRC code sections  
M1502.3 and M1502.3.1**

- Enlarged opening at the duct terminal to meet code requirement with improved air flow
- 15 square inches Net Free Area without grill
- Removable 4" pipe collar for installation convenience
- Nail marks on flange for easier and faster installation
- Light weight and durable
- 15 year warranty



Simply snap in grill for use  
as a **Bathroom Exhaust  
Vent**

OR

Use without grill for a  
**Dryer Exhaust  
Vent**

DESCRIPTION		PART #	CTN. QTY.	SKID
Vent with 4" Collar	Black	6014BL	6	90
	Brown	6014BR	6	90
	Weatherwood	6014WW	6	90

DESCRIPTION		PART #	CTN. QTY.	SKID
Vent without 4" Collar	Black	6015BL	10	150
	Brown	6015BR	10	150
	Weatherwood	6015WW	10	150

[www.duraflo.com](http://www.duraflo.com)

### Bathroom Exhaust Vent with Flapper & Attached Collar

- Seamless leakproof body
- Exhausts bathroom fan through the roof
- Attaches to 4" or 5" duct
- Code regulated insect grill

DESCRIPTION	PART #	CTN. QTY	SKID
Black	6011BL	6	108
Brown	6011BR	6	108
Weatherwood	6011WW	6	108



### Bathroom Exhaust Vent with Flapper & Unattached Collar

- Seamless leakproof body
- Collar is detached to allow trades to work independently
- Exhausts bathroom fan through the roof
- Attaches to 4" or 5" duct
- Insect grill

DESCRIPTION	PART #	CTN. QTY	SKID
Black	6010BL	8	144
Brown	6010BR	8	144



Includes CSA approved 6008 model vent

### Bathroom Exhaust Vent with Flapper

- Seamless leakproof body
- Exhaust bathroom fan through the roof
- Attaches to 4" or 5" duct
- Code regulated insect grill

DESCRIPTION	PART #	CTN. QTY	SKID
Black	6008BL	4	192
Brown	6008BR	4	192
Weatherwood	6008WW	4	192



### Bathroom Exhaust & Roof Dryer Vent Adapter Collar

- Attaches to 4" or 5" duct

DESCRIPTION	PART #	CTN. QTY	SKID
Black	6010-1BC	8	384



We Know Ventilation!

# Exhaust Ventilation

18

## Roof Dryer Vent with Flapper & Attached Collar

- Seamless leakproof body
- Attaches to 4" or 5" duct
- Large grill openings for safe dryer venting

DESCRIPTION	PART #	CTN. QTY	SKID
Black	6013BL	6	108
Brown	6013BR	6	108
Weatherwood	6013WW	6	108

## Roof Dryer Vent with Flapper

- Seamless leakproof body
- Exhausts clothing dryer through the roof
- Ideal for condominiums, town-houses, apartments and 2nd story laundry rooms
- Large grill openings for safe dryer venting

DESCRIPTION	PART #	CTN. QTY	SKID
Black	6012BL	4	192
Brown	6012BR	4	192

## Rangehood Exhaust Vent & Attached Collar

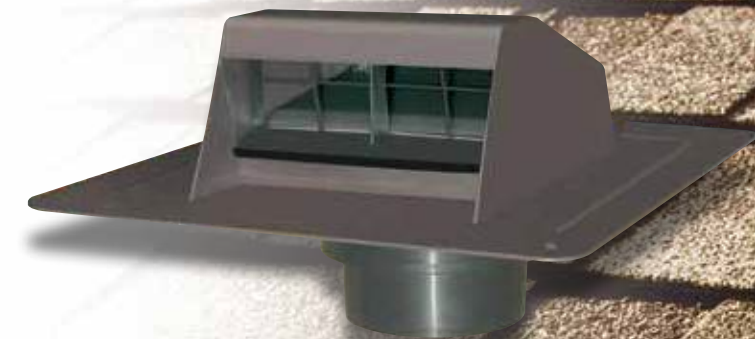
- Seamless leakproof body
- Vents kitchen range hoods and other large exhaust fans through the roof
- Attaches to 6", 7" or 8" duct
- Dual flapper system to prevent back draft and weather infiltration

DESCRIPTION	PART #	CTN. QTY	SKID
Black	6020BL	2	24
Brown	6020BR	2	24

## Rangehood Exhaust Vent Adapter Collar

- Attaches to 6", 7" or 8" duct

DESCRIPTION	PART #	CTN. QTY	SKID
Black	6021-4BC	8	144



# **duraflo®** **Adapter Collar**

WITH **BUILT-IN FLAPPER**

**Turn a roof vent into a  
bathroom exhaust vent!**

Install roof vent  
over new adapter  
collar

Dual  
flapper  
design

**Combine  
the weather  
protection of  
PROSlantBack  
with bathroom  
exhaust fans!**

- Built-in flapper prevents back draft
- Large nailable flange works with any roofing system
- Ideal for new home construction and existing homes
- Easily installs from the top of the roof deck or from inside the attic
- Fits 4", 5" or 6" flexible duct
- Available in black only
- US Patent 10,180,260

DESCRIP- TION	PART #	SIZE	CTN. QTY.	SKID
Black	6035BL	14" x 14"	4	72

**Roof Exhaust Ventilation**

**We Know Ventilation!**

# duraflo® Roof Flashings

20

Roof Flashings

## duraflo® Thermoplastic **Base Flashing**



- Suitable for roof pitches from 2/12 to 12/12
- UV resistant polypropylene
- Built in water deflectors
- Cold impact resistant to -40°

DESCRIPTION	PART #	CTN. QTY	SKID
PIPE SIZE 1.5" FLANGE SIZE 15" x 13"			
Black	551101BL	12	384
PIPE SIZE 2" FLANGE SIZE 15" x 13"			
Black	551102BL	12	384
PIPE SIZE 3" FLANGE SIZE 16-1/4 x 16-1/4"			
Black	551103BL	12	192
Brown	551103BR	12	192
Grey	551103G	12	192
Weatherwood	551103WW	12	192
PIPE SIZE 4" FLANGE SIZE 18" x 16-1/4"			
Black	551104BL	12	192
Brown	551104BR	12	192
Grey	551104G	12	192

# duraflo® StretchFit

## PIPE FLASHING



**The PermOseal® StretchFit requires no adjustment, no cutting and no tearing!**

The new PermOseal® StretchFit flashing by Duraflo® is a breakthrough in flashing seal technology.

- UV resistant polypropylene
- Built in water deflectors
- Fits roof pitches from 2/12 to 12/12
- Available in Black, Brown, Grey and Weatherwood



MODEL:  
551222  
1.5"-2"  
Pipe  
Sizes

MODEL:  
551224  
3"-4"  
Pipe Sizes



*StretchFit seal fits  
1.5" - 2" and 3" - 4" vent pipe sizes*

DESCRIPTION	PART #	CTN. QTY	SKID
PIPE SIZE 1.5" to 2" FLANGE SIZE 9.25" x 13"			
Black	551222BL	12	576
Brown	551222BR	12	576
Grey	551222G	12	576
Weatherwood	551222WW	12	576
PIPE SIZE 3" to 4" FLANGE SIZE 12" x 15.5"			
Black	551224BL	12	384
Brown	551224BR	12	384
Grey	551224G	12	384
Weatherwood	551224WW	12	384



**We Know Ventilation!**

# duraflo® Roof Flashings



22

Roof Flashings

**duraflo®**

## Multiple 3 in 1 Size FLASHING

*Cut & Peel for 1.5" to 3" vent pipe sizes*

- Suitable for roof pitches from 2/12 to 12/12
- UV resistant polypropylene
- Built in water deflectors
- Cold impact resistant to -40°

DESCRIPTION	PART #	CTN. QTY	SKID
PIPE SIZE 1.5" to 3" FLANGE SIZE 12" x 15"			
Black	551233BL	12	384
Black Bulk	551233BULKBL	40	640



**duraflo®**

## Multiple 5 in 1 Size FLASHING

*Open & Peel for 1.25" to 4" vent pipe sizes*

- Thermoplastic material
- Suitable for pitches 3.5/12 to 12/12
- UV & Cold impact resistant
- Built-in water deflectors

DESCRIPTION	PART #	CTN. QTY	SKID
PIPE SIZE 1.25" to 4" FLANGE SIZE 13" x 13"			
Black	551244BL	12	192



# duraflo® Flexible

## BASE FLASHING

**Engineered material stays flexible in extreme cold conditions**

- Suitable for roof pitches from 2/12 to 12/12
- UV resistant polypropylene
- Built in water deflectors
- Cold impact resistant to -40°

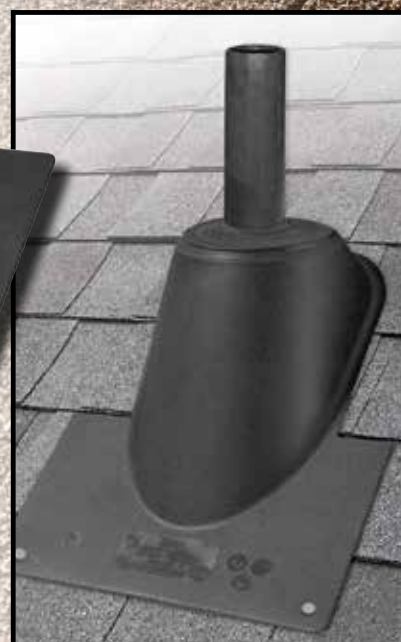
DESCRIPTION	PART #	CTN. QTY	SKID
<b>PIPE SIZE 2" FLANGE SIZE 13" x 15"</b>			
Black	551142BL	12	384
<b>PIPE SIZE 3" FLANGE SIZE 16-1/4" x 18"</b>			
Black	551143BL	12	192
<b>PIPE SIZE 4" FLANGE SIZE 16-1/4" x 18"</b>			
Black	551144BL	12	192



## Steep Roof **Flashing**

- Patented one-piece design
- Easy installation with thermoplastic base
- Suitable for pitches from 2/12 to 20/12
- Tear away ring sizing for different pipe sizes
- Double seal, No-Calk® water tight collar

DESCRIPTION	PART #	CTN. QTY	SKID
<b>PIPE SIZE 1.5" - 3" FLANGE SIZE 11-1/4" x 19"</b>			
Black	5511930	6	180
<b>PIPE SIZE 3" - 4" FLANGE SIZE 13" x 20-1/8"</b>			
Black	5511931	6	180





## Cathedral Gable Vent

DESCRIPTION	PART #	NET FREE AREA	CTN. QTY	SKID
22" x 28" White	626110-00	93 sq. in.	6	48

## Octagon Gable Vent

DESCRIPTION	PART #	NET FREE AREA	CTN. QTY	SKID
22" x 22" White	626060-00	59 sq. in.	6	72
22" x 22" White	626060-00B	59 sq. in.	8	96
19" x 19" White	626058-00	46 sq. in.	6	72
19" x 19" White	626058-00B	46 sq. in.	8	96
19" x 19" Black	626058-00BLB	46 sq. in.	8	96

## Round Gable Vent

DESCRIPTION	PART #	NET FREE AREA	CTN. QTY	SKID
22" White	626055-00	55 sq. in.	6	72
22" White	626055-00B	55 sq. in.	8	96
19" White	626053-00	43 sq. in.	6	72
19" White	626053-00B	43 sq. in.	8	96
19" Black	626053-00BLB	43 sq. in.	8	96

## Square Gable Vent

DESCRIPTION	PART #	NET FREE AREA	CTN. QTY	SKID
17" X 17" White	626045-00	46 sq. in.	6	72
17" X 17" White	626045-00B	46 sq. in.	7	84
15" X 15" White	626043-00	37 sq. in.	6	72
15" X 15" White	626043-00B	37 sq. in.	7	84
15" X 15" Black	626043-00BLB	37 sq. in.	7	84

## Rectangular Gable Vent

DESCRIPTION	PART #	NET FREE AREA	CTN. QTY	SKID
17" X 23" White	626080-00	70 sq. in.	6	72
17" X 23" White	626080-00B	70 sq. in.	8	96
15" X 21" White	626075-00	59 sq. in.	6	72
15" X 21" White	626075-00B	59 sq. in.	7	84
22" X 28" White	626120-00	101 sq. in.	6	48

## Half Moon Gable Vent

DESCRIPTION	PART #	NET FREE AREA	CTN. QTY	SKID
34" X 23" White	626095-00	116 sq. in.	5	40

## Standard Gable Vent

	DESCRIPTION	PART #	NET FREE AREA	CTN. QTY	SKID
SP	11" X 10" White	620808	21 sq. in.	12	768
SP	11" X 10" Black	620808BL	21 sq. in.	12	768
SP	15" X 15" White	621212	54 sq. in.	12	324
SP	15" X 15" Black	621212BL	54 sq. in.	12	324
SP	11" X 14" White	620812	33 sq. in.	12	576
SP	11" X 14" Black	620812BL	33 sq. in.	12	576
SP	11" X 18" White	620816	60 sq. in.	12	336
	15" X 20.5" White	621218	72 sq. in.	12	324
	15" X 20.5" Black	621218BL	72 sq. in.	12	324

## Recessed Gable Vent

	DESCRIPTION	PART #	NET FREE AREA	CTN. QTY	SKID
SP	11" X 10" White	620808REC	20 sq. in.	12	768
SP	11" X 14" White	620812REC	33 sq. in.	12	576
SP	15" X 15" White	621212REC	51 sq. in.	13	351

## Combined Gable Vent

	DESCRIPTION	PART #	NET FREE AREA	CTN. QTY	SKID
SP	11" X 10" White	620808COMB	20 sq. in.	8	288
SP	11" X 14" White	620812COMB	33 sq. in.	6	-
SP	15" X 15" White	621212COMB	51 sq. in.	6	162

## Combined Vent

**Ultimate in gable weather protection**

- Can be installed to display raised profile or reversed to show recessed profile
- Inverted rear vents block weather infiltration, directing it downward back out of the vent
- Combined Gable Vents provide air flow while helping to block extreme weather infiltration



**We Know Ventilation!**

# duraflo® Siding & Soffit Vents

26

Siding & Soffit Vents



## Foundation Vent

All-In-One Block Application

• Standard U.S. Block • Metric Block • Queen Brick

DESCRIPTION	PART #	NET FREE AREA	CTN. QTY	SKID
Black	649000BL	51 sq. in.	12	288
Gray	649000G	51 sq. in.	12	288

## Round Soffit Vent

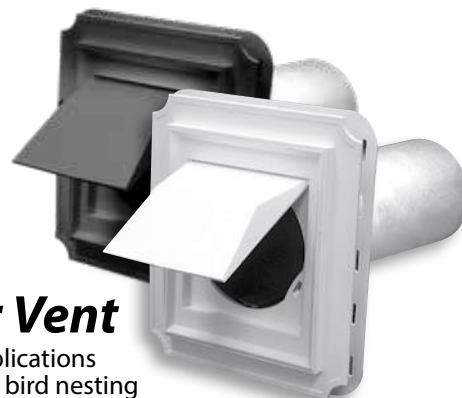
- 4"
- Flush mount with molded grill



DESCRIPTION	PART #	NET FREE AREA	CTN. QTY	SKID
White	646020-00	6.38 sq. in	60	3840

## Dryer Vent

- Siding applications
- Eliminates bird nesting



DESCRIPTION	PART #	CTN. QTY	SKID
White	641010-00	6	96
White	641010-00B	25	800
Black	641010-00BLB	25	800

## Meter Mount Plate

- 17-5/8" X 15-7/8"



DESCRIPTION	PART #	NET FREE AREA	CTN. QTY	SKID
White	645080-00	NA	10	-

## 6" Wall Vent

- Works as intake or exhaust



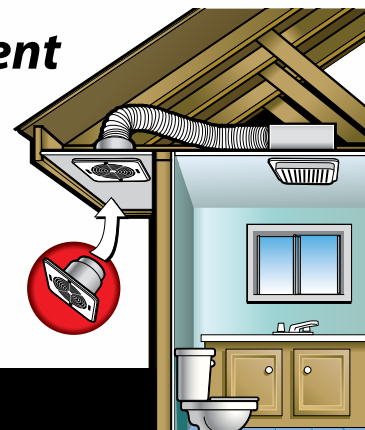
DESCRIPTION	PART #	CTN. QTY	SKID
Without Collar			
White	646010-00	30	1890
With Collar			
White	646025-00	12	756
Black	646025-00BL	12	756

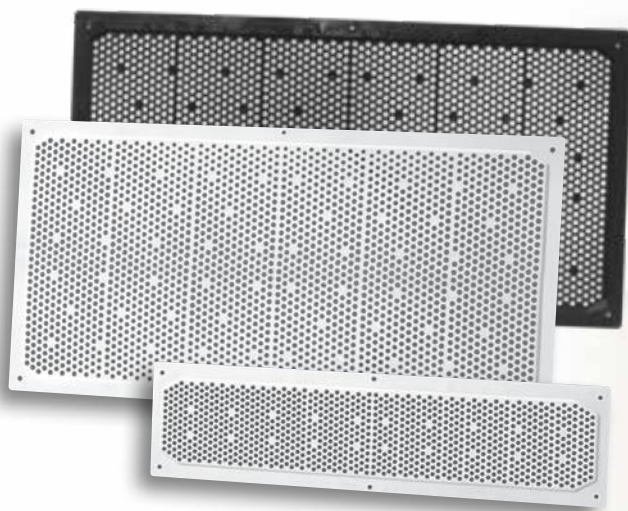


## Bathroom Soffit Exhaust Vent

- Easy installation and flush mount finish
- No need to penetrate the roof or wall
- Unique flapper prevents back draft
- Attaches to 4" or 5" duct

DESCRIPTION	PART #	CTN. QTY	SKID
White	646015	6	216
Brown	646015BR	6	216





## Plastic Soffit Vents

- Installs easily under eaves
- Small louvers guard against weather and insect infiltration
- 2 - 16" x 4" soffit vents = 1-50 sq. in. roof vent
- 2 - 16" x 8" soffit vents = 2-50 sq. in. roof vent

DESCRIPTION	PART #	NET FREE AREA	CTN. QTY	SKID
16" X 4" White	641604	18.6 sq. in.	36	9720
16" X 4" Brown	641604BR	18.6 sq. in.	36	9720
16" X 8" White	641608	45.5 sq. in.	36	4860
16" X 8" Black	641608BL	45.5 sq. in.	36	4860
16" X 8" Brown	641608BR	45.5 sq. in.	36	4860



## 8 Ft. Plastic Soffit Strip

- Easy to install
- Used to provide continuous soffit ventilation
- 2" wide

DESCRIPTION	PART #	NET FREE AREA	CTN. QTY	SKID
8 Ft. White	648FTWH	69 sq. in.	25	-
8 Ft. Brown	648FTBR	69 sq. in.	25	-
8 Ft. Black	648FTBL	69 sq. in.	25	-

## Mini Louvers

- Plastic
- Molded grill

Available in full box quantities only



DESCRIPTION	PART #	NET FREE AREA	CTN. QTY	SKID
1.0" White	61PML101	0.20 sq. in.	100	90000
1.5" White	61PML151	0.43 sq. in.	100	38400
2.0" White	61PML201	0.66 sq. in.	100	10000
2.0" Black	61PML201BL	0.66 sq. in.	100	10000
2.5" White	61PML251	1.31 sq. in.	100	14000
3.0" White	61PML301	1.77 sq. in.	100	14000
3.0" Black	61PML301BL	1.77 sq. in.	100	14000
4.0" White	61PML401	2.85 sq. in.	50	7000
4.0" Black	61PML401BL	2.85 sq. in.	50	7000
5.0" White	61PML501	3.80 sq. in.	20	2880
6.0" White	61PML601	5.20 sq. in.	20	1620

## Mini Louvers

- Aluminum
- Attached screen

Available in full box quantities only

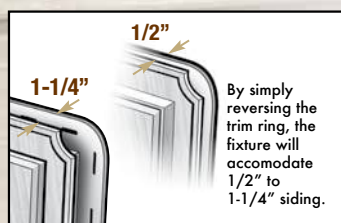


DESCRIPTION	PART #	NET FREE AREA	CTN. QTY	SKID
1.0"	61RAA10D	0.20 sq. in.	250	38700
1.5"	61RAA15D	0.43 sq. in.	120	15000
2.0"	61RAA20D	0.66 sq. in.	65	8125
2.5"	61RAA25D	1.31 sq. in.	85	10625
3.0"	61RAA30D	1.77 sq. in.	55	6875
4.0"	61RAA40D	2.85 sq. in.	30	3750
6.0"	61RAA60D	5.20 sq. in.	8	1000

**We Know Ventilation!**



## Scalloped Series with reversible trim



## Recessed Electrical Block



DESCRIPTION	PART #	CTN. QTY	SKID
White	641040-00	12	2304
White	641040-00B	75	2400
Black	641040-00BLB	75	2400

## Jumbo Block

- 13" x 9" mounting size
- Reversible trim ring



DESCRIPTION	PART #	CTN. QTY	SKID
White	641030-00	12	432
White	641030-00B	24	432
Black	641030-00BLB	24	432

## Surface Series Block

- 4.8" x 4.8" mounting size
- Double 4, 5, 6, 8 & 10
- Triple 3"
- Dutch Lap



DESCRIPTION	PART #	CTN. QTY	SKID
White	641060-00	12	1440
White	641060-00B	30	-
Black	641060-00BLB	30	-

## Electrical Plug Block



DESCRIPTION	PART #	CTN. QTY	SKID
White	641095-00	12	1260



## Split Block

DESCRIPTION	PART #	CTN. QTY	SKID
White	641020-00	12	2304
White	641020-00B	75	2400
Black	641020-00BLB	75	2400

## Flush Electrical Block

- Reversible trim ring



DESCRIPTION	PART #	CTN. QTY	SKID
White	641050-00	12	1680
White	641050-00B	35	-

## Double Walled Recessed Electrical Block

- Reversible trim ring



DESCRIPTION	PART #	CTN. QTY	SKID
White	641090-00	12	1680
White	641090-00B	35	-

## Mounting Block

- 5.5" x 6.5" mounting size
- Reversible trim ring



DESCRIPTION	PART #	CTN. QTY	SKID
White	641000-00	12	720
White	641000-00B	25	800
Black	641000-00BLB	25	800

## Electrical Block

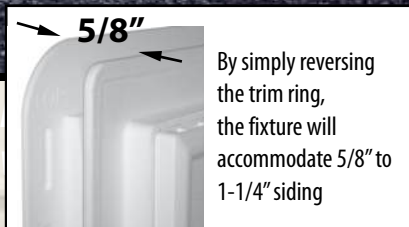


DESCRIPTION	PART #	CTN. QTY	SKID
White	641055-00	12	960



## Plate Series with reversible trim

The **WeatherPRO® Plate Series** features molded rain channels that incorporate the principals of surface tension. Water cascades down the surface of the wall and is diverted through molded rain channels exiting over the rain flange.



**WeatherPRO®**

### Pro Light Block



DESCRIPTION	PART #	CTN. QTY	SKID
White	642145-00	12	1176

**WeatherPRO®**

### Pro Recessed Electrical Block



DESCRIPTION	PART #	CTN. QTY	SKID
White	642125-00	12	1680

**WeatherPRO®**

### Pro Recessed Split Block



DESCRIPTION	PART #	CTN. QTY	SKID
White	642175-00	12	1680

**WeatherPRO®**

### Pro Mini Mounting Block

• 3.5" x 5" mounting size



DESCRIPTION	PART #	CTN. QTY	SKID
White	642135-00	12	1680

**WeatherPRO®**

### Pro Surface Block

• 4.8" x 5.8" mounting size



DESCRIPTION	PART #	CTN. QTY	SKID
White	642155-00	12	1176

**WeatherPRO®**

### Pro Mounting Block

• 5" x 6" mounting size



DESCRIPTION	PART #	CTN. QTY	SKID
White	642165-00	12	1176

### Dryer Vent Plate



DESCRIPTION.	PART #	CTN. QTY	SKID
White	646004-00	6	300

**WeatherPRO®**  
**Rain Channels**



**Bottom Rain Flange**

### Flush Electrical Block



DESC.	PART #	CTN. QTY	SKID
White	645000-00	60	5400

### Recessed Split Block



DESC.	PART #	CTN. QTY	SKID
White	645030-00	12	-

### Light Block



DESC.	PART #	CTN. QTY	SKID
White	645020-00	30	1890

## HOW MANY VENTS DO YOU NEED?

*A home requires an equal amount of intake (soffit) & exhaust (roof) ventilation*

*Ventilation requirements for your home*

VENT	NET FREE AREA OF VENT	NUMBER OF VENTS PER			
		1000 sq. ft.	1500 sq. ft.	2000 sq. ft.	2500 sq. ft.
WEATHERPRO PROVENTILATOR - 3 TIER	130 sq. in.	1	2	3	4
WEATHERPRO PROVENTILATOR - 2 TIER	95 sq. in.	2	3	4	5
WEATHERPRO PROVENTILATOR - 1 TIER	48 sq. in.	4	6	8	10
WEATHERPRO PROTURBO	117 sq. in.	1	2	3	4
WEATHERPRO 60PRO50	50 sq. in.	5	8	10	12
WEATHERPRO 60PRO75	75 sq. in.	4	5	7	8
WEATHERPRO RIDGE VENT	72 sq. in.	4	5	7	10
DURAFLO RIDGE VENT	58 sq. in.	4	6	8	10
WEATHER PRO SLANT BACK	50 sq. in.	5	8	10	12
6050 SQUARE TOP	50 sq. in.	5	8	10	12
6075 SQUARE TOP	75 sq. in.	4	5	7	8
6050T TALL VENT	50 sq. in.	5	8	10	12
6065 SLANT BACK	61 sq. in.	4	6	8	9
RIDGE ROLL - 20ft	300 sq. in.	16 ft.	24 ft.	32 ft.	40 ft.

Notes:

- Pitches 3/12 to 12/12
- Roof pitches under 4/12 require double the amount of ventilation
- Use this chart to determine how many vents your attic requires
- The included ventilation calculator is only a guide, please consult your local building code for specific ventilation requirements

PART #	PAGE #	PART #	PAGE #	PART #	PAGE #	PART #	PAGE #
551101BL	20	6015BL	16	626080-00B	24	641608BL	27
551102BL	20	6015BR	16	626095-00	24	641608BR	27
551103BL	20	6015WW	16	626110-00	24	642125-00	29
551103BR	20	6020BL	18	626120-00	24	642135-00	29
551103G	20	6020BR	18	641000-00	28	642145-00	29
551103WW	20	6021-4BC	18	641000-00B	28	642155-00	29
551104BL	20	6025BL	13	641000-00BLB	28	642165-00	29
551104BR	20	6025BLF	13	641010-00	26	642175-00	29
551104G	20	6030-4BC	14	641010-00B	26	645000-00	29
551142BL	23	6032BL	15	641010-00BLB	26	645020-00	29
551143BL	23	6032BR	15	641020-00	28	645030-00	29
551144BL	23	6033BL	15	641020-00B	28	645080-00	26
5511930	23	6033BR	15	641020-00BLB	28	646004-00	29
5511931	23	6035BL	19	641030-00	28	646010-00	26
551222BL	21	6050BL	10	641030-00B	28	646015	26
551222BR	21	6050BR	10	641030-00BLB	28	646015BR	26
551222G	21	6050G	10	641040-00	28	646020-00	26
551222WW	21	6050WW	10	641040-00B	28	646025-00	26
551224BL	21	6050TBL-	10	641040-00BLB	28	646025-00BL	26
551224BR	21	6050TBR-	10	641050-00	28	648FTBL	27
551224G	21	6050TG-	10	641050-00B	28	648FTBR	27
551224WW	21	6050TWW-	10	641055-00	28	648FTWH	27
551233BL	22	6059BL	12	641060-00	28	649000BL	26
551233BULKBL	22	6065BL	11	641060-00B	28	649000G	26
551244BL	22	6065BR	11	641060-00BLB	28		
5950C	11	6065G	11	641090-00	28		
5975B	11	6065WW	11	641090-00B	28		
5975C	11	6075BL	10	641095-00	28		
60RVA20MET	13	6075BR	10	641604	27		
60RVA20US	13	6075G	10	641604BR	27		
60RVA208	13	6075WW	10	641608	27		
60PRO30BL	14	6094BL	12				
60PRO30BR	14	61PML101	27				
60PRO31BL	14	61PML151	27				
60PRO31BR	14	61PML201	27				
60PRO50BL	9	61PML201BL	27				
60PRO50BR	9	61PML251	27				
60PRO50G	9	61PML301	27				
60PRO50WW	9	61PML301BL	27				
60PRO50SLBL	7	61PML401	27				
60PRO50SLBR	7	61PML401BL	27				
60PRO50SLG	7	61PML501	27				
60PRO50SLWW	7	61PML601	27				
60PRO75BL	8	61RAA10D	27				
60PRO75BR	8	61RAA15D	27				
60PRO75G	8	61RAA20D	27				
60PRO75WW	8	61RAA25D	27				
60PRO117BL	5	61RAA30D	27				
60PRO117BR	5	61RAA40D	27				
60PRO117G	5	61RAA60D	27				
60PRO117WW	5	620808	25				
60PRO130BL	4	620808BL	25				
60PRO130BR	4	620808COMB	25				
60PRO130G	4	620808REC	25				
60PRO130WW	4	620812	25				
60PRO140BL	4	620812BL	25				
60PRO140BR	4	620812COMB	25				
60PRO140G	4	620812REC	25				
60PRO140WW	4	620816	25				
60PRO150BL	4	621212	25				
60PRO150BR	4	621212BL	25				
60PRO150G	4	621212COMB	25				
60PRO150WW	4	621212REC	25				
6001BL	6	621218	25				
6001BR	6	621218BL	25				
6001G	6	621218BL	25				
6001WW	6	626043-00	24				
6008BL	17	626043-00B	24				
6008BR	17	626043-00BLB	24				
6008WW	17	626045-00	24				
6010-1BC	17	626045-00B	24				
6010BL	17	626053-00	24				
6010BR	17	626053-00B	24				
6011BL	17	626053-00BLB	24				
6011BR	17	626055-00	24				
6011WW	17	626055-00B	24				
6012BL	18	626058-00	24				
6012BR	18	626058-00B	24				
6013BL	18	626058-00BLB	24				
6013BR	18	626060-00	24				
6013WW	18	626060-00B	24				
6014BL	16	626075-00	24				
6014BR	16	626075-00B	24				
6014WW	16	626080-00	24				

## Colour Options



We Know Ventilation!

# WE KNOW VENTILATION

## **duraflo®** *Ventilation Systems*

Duraflo® products provide exceptional protection against weather infiltration. Many of our innovative products, along with our WeatherPRO® Series, are designed with ease of installation in mind. Cold impact resistance, patented baffle systems, UV protection and colour selection make Duraflo products leaders in the construction industry.



**Canplas Industries Ltd.**  
500 Veterans Dr., P.O. Box 1800  
Barrie, Ontario  
Canada L4M 4V3

**Canada:** 1-800-461-3361  
**USA:** 1-800-501-5018

E-mail: [duraflo@canplas.com](mailto:duraflo@canplas.com)  
[www.duraflo.com](http://www.duraflo.com)

**canplas®**