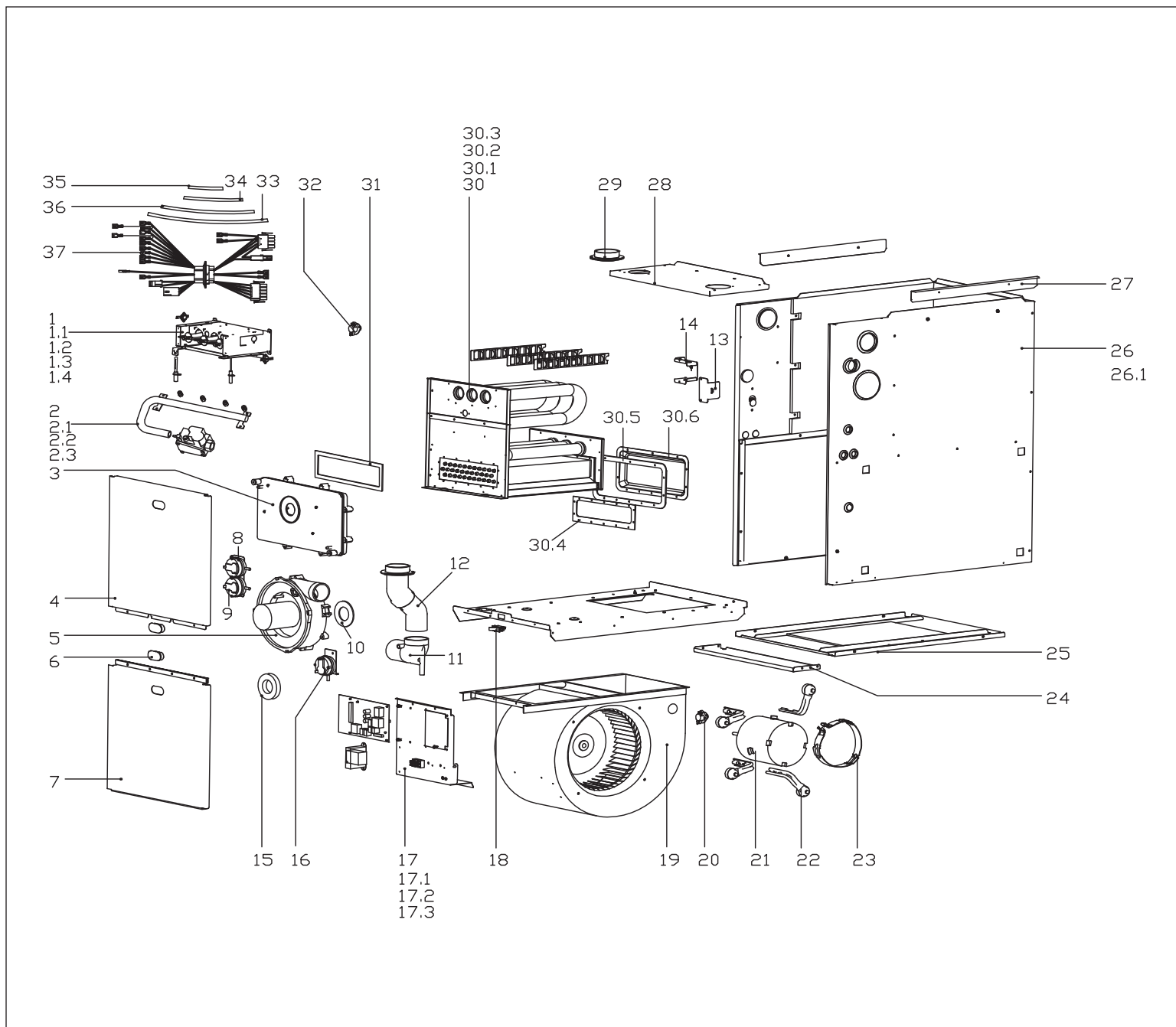


Bosch 96% AFUE Gas Furnace BGH96 Model Condensing Gas Furnace

BGH96M060B3A

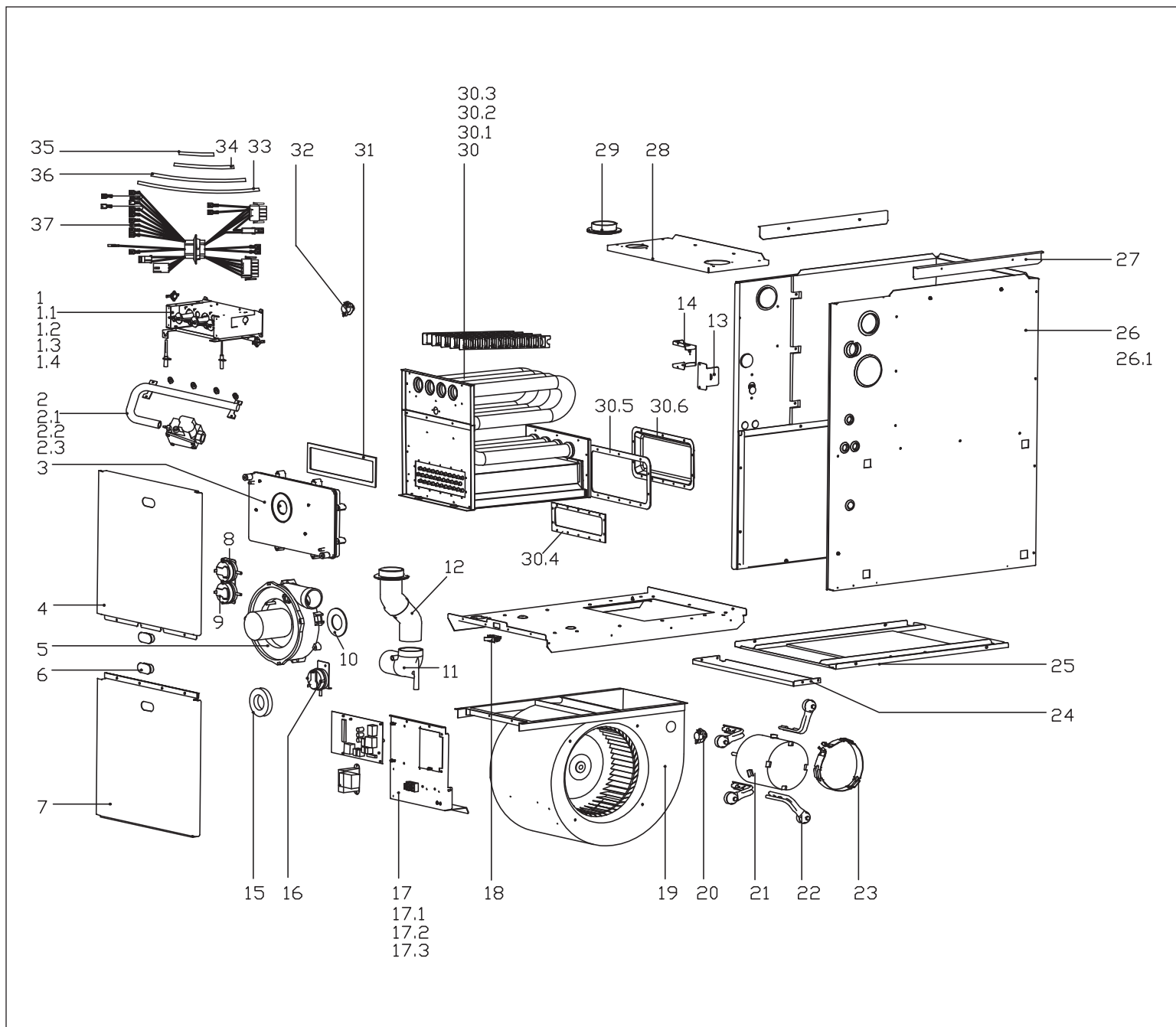


BOSCH

Pos.	Description	Ordering no.	BGH96M060B3A	Recommended Stocking	Remarks
1	Burner assembly	8733952535	■	✓	
1.1	Rollout switch - resettable	8733952457	■	✓	
1.2	Ignitor	8733951178	■	✓	
1.3	Flame sensor	8733951177	■	✓	
1.4	Burner	8733952458	■	✓	
2	Gas pipe assembly	8733952536	■		
2.1	Gas valve-two stage	8733952460	■	✓	
2.2	NG Orifice (0-2000, #45)	8733952461	■	✓	
2.3	Gas pipe	8733952537	■		
3	Drain box	8733952523	■		
4	Panel, Upper Front	8733952524	■		
5	Inducer	8733952518	■	✓	
6	Sight Glass	8733951202	■		
7	Panel, Lower Front	8733952525	■		
8	Pressure switch (High fire)	8733952475	■	✓	
9	Pressure switch (low fire)	8733952468	■	✓	
10	Inducer gasket	8733952469	■	✓	
11	Flue discharge elbow	8733952470	■		
12	Flue discharge pipe joint assembly	8733952471	■		
13	Junction box cover	8733952472	■		
14	Junction box	8733952476	■		
15	Flue discharge clasp	8733952538	■		
16	Pressure switch (water level)	8733952467	■	✓	
17	Electric control box assembly	8733952473	■		
17.1	Transformer	8733951192	■	✓	
17.2	Main control board assembly	8733952477	■	✓	
17.3	Terminal block	8733952478	■		
18	Door switch	8733951212	■	✓	
19	Blower Housing	8733952526	■		
20	Fan mounted temperature limit switch	8733952480	■	✓	
21	ECM blower motor	8733952520	■	✓	
22	Motor bracket ass'y I	8733952482	■		
23	Motor bracket	8733952483	■		
24	Bottom support Plate	8733952528	■		
25	Bottom Return Plate	8733952529	■		
26	Cabinet assembly	8733952530	■		
26.1	Blower Partition Panel	8733952509	■		
27	Supporting bar assembly	8733952488	■		
28	Panel, Top	8733952633	■		
29	Air inlet pipe joint	8733952490	■		
30	Heat exchanger assembly	8733952540	■		
30.1	Primary heat exchanger	8733952541	■		
30.2	Secondary heat exchanger	8733952533	■		
30.3	Spoiler	8733952494	■		
30.4	Heat exchanger gasket	8733952553	■	✓	
30.5	hoodforfumes gasket	8733952554	■	✓	
30.6	hoodforfumes	8733952555	■		
31	Drain pan gasket	8733952534	■	✓	
32	Chamber Limit switch - fixed	8733952496	■	✓	
33	Hose I	8733952542	■	✓	
34	Hose IV	8733952545	■	✓	
35	Hose II	8733952543	■	✓	
36	Hose III	8733952544	■	✓	
37	Wire harness	8733952546	■	✓	
BGH96M060B3A					

Bosch 96% AFUE Gas Furnace BGH96 Model Condensing Gas Furnace

BGH96M080B3A

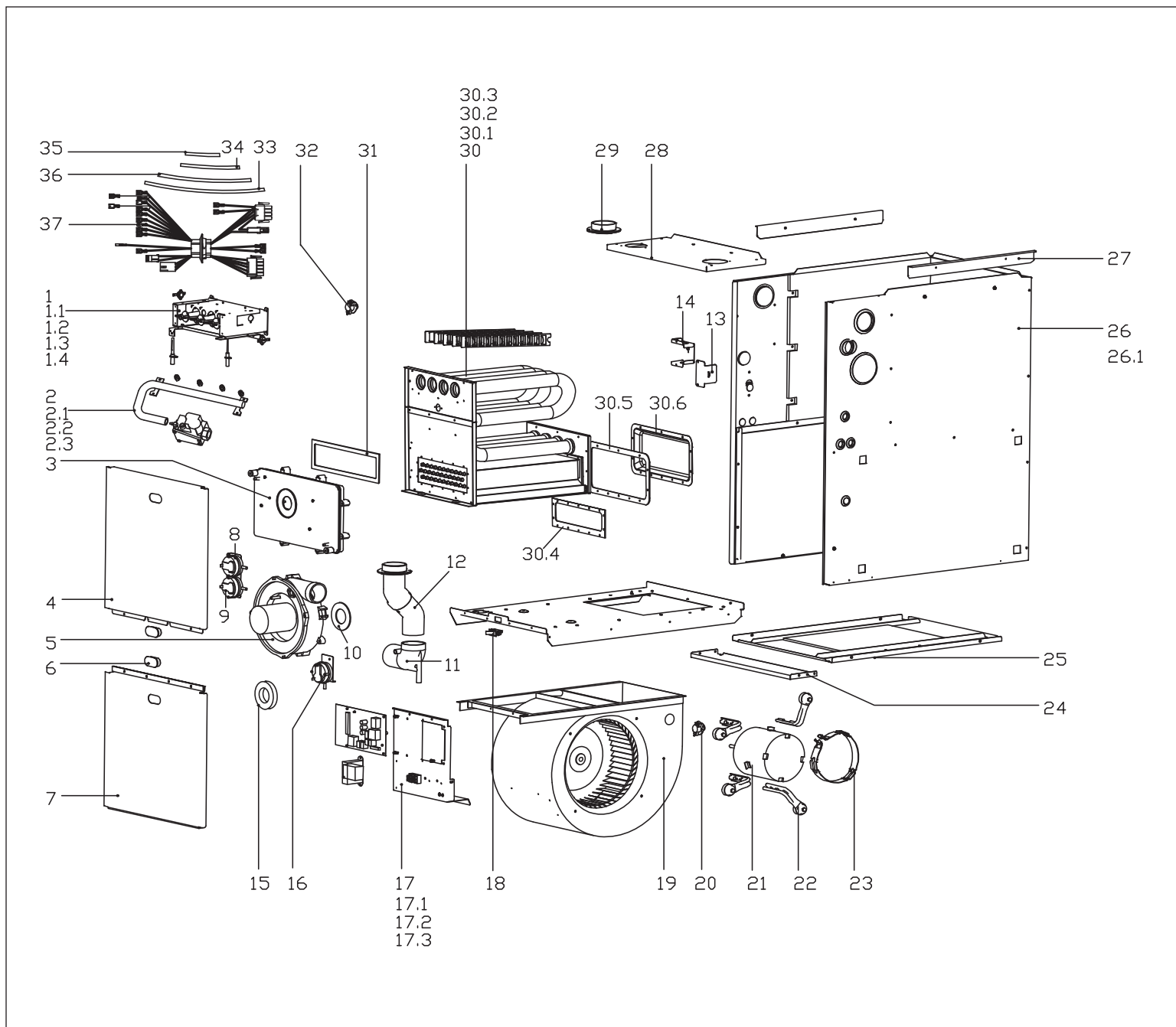


BOSCH

Pos.	Description	Ordering no.	BGH96M080B3A	Recommended Stocking	Remarks
1	Burner assembly	8733952515	■	✓	
1.1	Rollout switch - resettable	8733952457	■	✓	
1.2	Ignitor	8733951178	■	✓	
1.3	Flame sensor	8733951177	■	✓	
1.4	Burner	8733952458	■	✓	
2	Gas pipe assembly	8733952516	■		
2.1	Gas valve-two stage	8733952460	■	✓	
2.2	NG Orifice (0-2000,#45)	8733952461	■	✓	
2.3	Gas pipe	8733952517	■		
3	Drain box	8733952523	■		
4	Panel, Upper Front	8733952524	■		
5	Inducer	8733952518	■	✓	
6	Sight Glass	8733951202	■		
7	Panel, Lower Front	8733952525	■		
8	Pressure switch (High fire)	8733952475	■	✓	
9	Pressure switch (low fire)	8733952468	■	✓	
10	Inducer gasket	8733952469	■	✓	
11	Flue discharge elbow	8733952470	■		
12	Flue discharge pipe joint assembly	8733952471	■		
13	Junction box cover	8733952472	■		
14	Junction box	8733952476	■		
15	Flue discharge clasp	8733952519	■		
16	Pressure switch (water level)	8733952467	■	✓	
17	Electric control box assembly	8733952473	■		
17.1	Transformer	8733951192	■	✓	
17.2	Main control board assembly	8733952477	■	✓	
17.3	Terminal block	8733952478	■		
18	Door switch	8733951212	■	✓	
19	Blower Housing	8733952526	■		
20	Fan mounted temperature limit switch	8733952527	■	✓	
21	ECM blower motor	8733952520	■	✓	
22	Motor bracket ass'y I	8733952482	■		
23	Motor bracket	8733952483	■		
24	Bottom support Plate	8733952528	■		
25	Bottom Return Plate	8733952529	■		
26	Cabinet assembly	8733952530	■		
26.1	Blower Partition Panel	8733952509	■		
27	Supporting bar assembly	8733952488	■		
28	Panel, Top	8733952633	■		
29	Air inlet pipe joint	8733952490	■		
30	Heat exchanger assembly	8733952531	■		
30.1	Primary heat exchanger	8733952532	■		
30.2	Secondary heat exchanger	8733952533	■		
30.3	Spoiler	8733952494	■		
30.4	Heat exchanger gasket	8733952553	■	✓	
30.5	hoodforfumes gasket	8733952554	■	✓	
30.6	hoodforfumes	8733952555	■		
31	Drain pan gasket	8733952534	■	✓	
32	Chamber Limit switch - fixed	8733952496	■	✓	
33	Hose I	8733952542	■	✓	
34	Hose IV	8733952545	■	✓	
35	Hose II	8733952543	■	✓	
36	Hose III	8733952544	■	✓	
37	Wireharness	8733952546	■	✓	
BGH96M080B3A					

Bosch 96% AFUE Gas Furnace BGH96 Model Condensing Gas Furnace

BGH96M080C4A

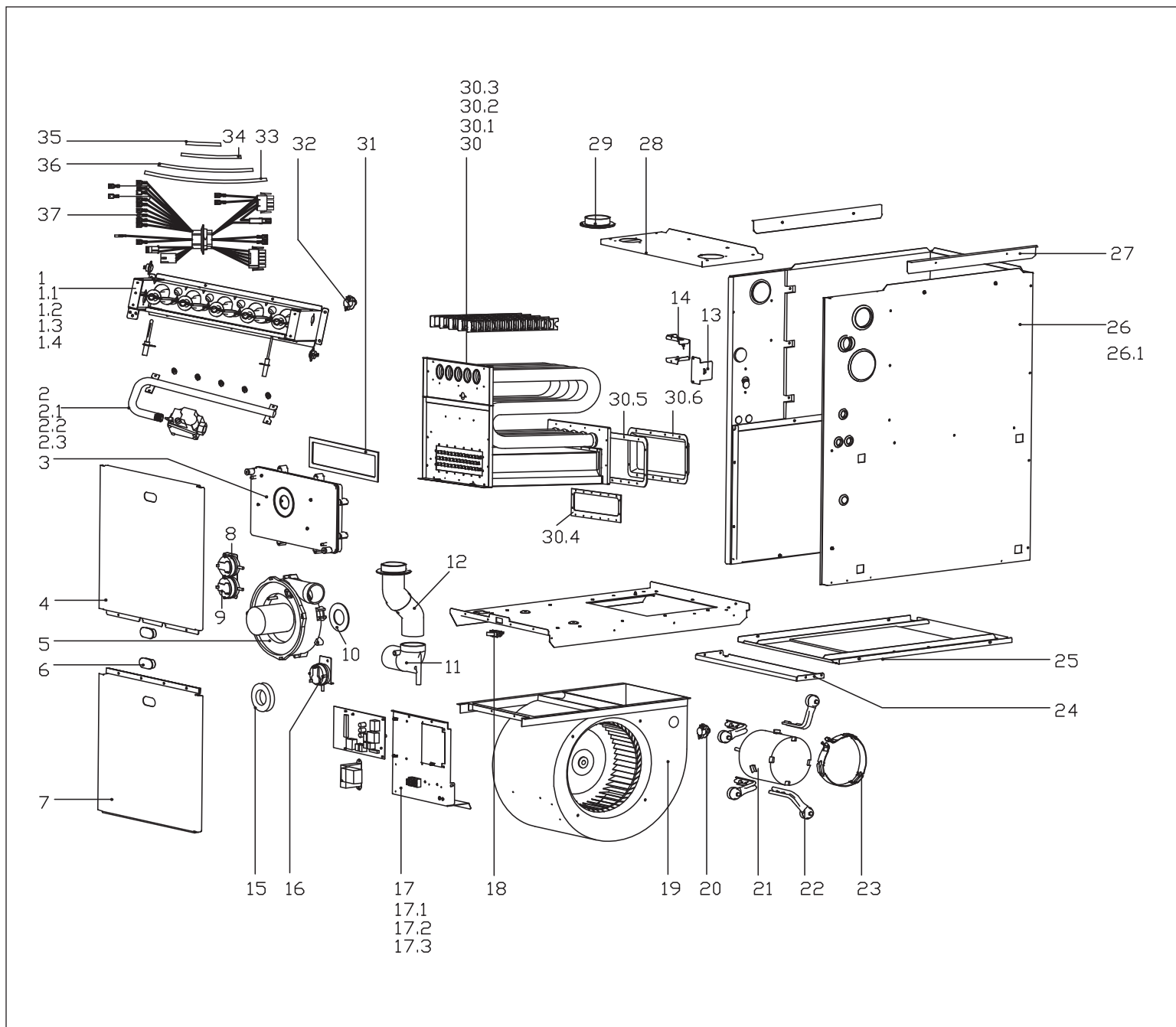


BOSCH

Pos.	Description	Ordering no.	BGH96M080C4A	Recommended Stocking	Remarks
1	Burner assembly	8733952515	■	✓	
1.1	Rollout switch - resettable	8733952457	■	✓	
1.2	Ignitor	8733951178	■	✓	
1.3	Flame sensor	8733951177	■	✓	
1.4	Burner	8733952458	■	✓	
2	Gas pipe assembly	8733952516	■		
2.1	Gas valve-two stage	8733952460	■	✓	
2.2	NG Orifice (0-2000, #45)	8733952461	■	✓	
2.3	Gas pipe	8733952517	■		
3	Drain box	8733952503	■		
4	Panel, Upper Front	8733952504	■		
5	Inducer	8733952518	■	✓	
6	Sight Glass	8733951202	■		
7	Panel, Lower Front	8733952505	■		
8	Pressure switch (High fire)	8733952475	■	✓	
9	Pressure switch (low fire)	8733952468	■	✓	
10	Inducer gasket	8733952469	■	✓	
11	Flue discharge elbow	8733952470	■		
12	Flue discharge pipe joint assembly	8733952471	■		
13	Junction box cover	8733952472	■		
14	Junction box	8733952476	■		
15	Flue discharge clasp	8733952519	■		
16	Pressure switch (water level)	8733952467	■	✓	
17	Electric control box assembly	8733952473	■		
17.1	Transformer	8733951192	■	✓	
17.2	Main control board assembly	8733952477	■	✓	
17.3	Terminal block	8733952478	■		
18	Door switch	8733951212	■	✓	
19	Blower Housing	8733952479	■		
20	Fan mounted temperature limit switch	8733952480	■	✓	
21	ECM blower motor	8733952520	■	✓	
22	Motor bracket ass'y I	8733952482	■		
23	Motor bracket	8733952483	■		
24	Bottom support Plate	8733952506	■		
25	Bottom Return Plate	8733952507	■		
26	Cabinet assembly	8733952508	■		
26.1	Blower Partition Panel	8733952539	■		
27	Supporting bar assembly	8733952488	■		
28	Panel, Top	8733952510	■		
29	Air inlet pipe joint	8733952490	■		
30	Heat exchanger assembly	8733952521	■		
30.1	Primary heat exchanger	8733952522	■		
30.2	Secondary heat exchanger	8733952513	■		
30.3	Spoiler	8733952494	■		
30.4	Heat exchanger gasket	8733952550	■	✓	
30.5	hoodforfumes gasket	8733952551	■	✓	
30.6	hoodforfumes	8733952552	■		
31	Drain pan gasket	8733952514	■	✓	
32	Chamber Limit switch - fixed	8733952496	■	✓	
33	Hose I	8733952542	■	✓	
34	Hose IV	8733952545	■	✓	
35	Hose II	8733952543	■	✓	
36	Hose III	8733952544	■	✓	
37	Wireharness	8733952546	■	✓	
BGH96M080C4A					

Bosch 96% AFUE Gas Furnace BGH96 Model Condensing Gas Furnace

BGH96M100C5A

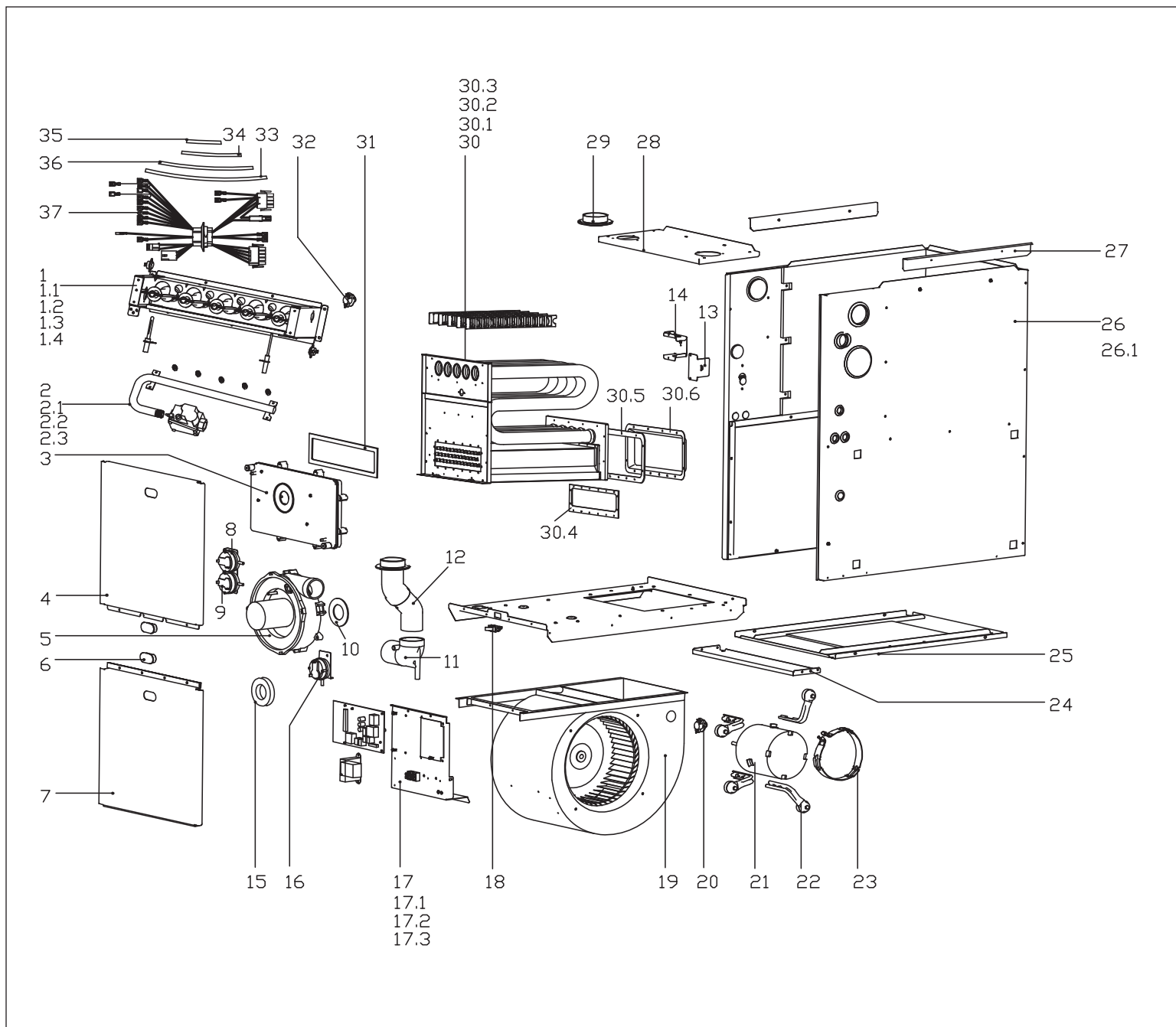


BOSCH

Pos.	Description	Ordering no.	BGH96M100C5A	Recommended Stocking	Remarks
1	Burner assembly	8733952497	■	✓	
1.1	Rollout switch - resettable	8733952457	■	✓	
1.2	Ignitor	8733951178	■	✓	
1.3	Flame sensor	8733951177	■	✓	
1.4	Burner	8733952458	■	✓	
2	Gas pipe assembly	8733952498	■		
2.1	Gas valve-two stage	8733952460	■	✓	
2.2	NG Orifice (0-2000,#45)	8733952461	■	✓	
2.3	Gas pipe	8733952499	■		
3	Drain box	8733952503	■		
4	Panel, Upper Front	8733952504	■		
5	Inducer	8733952465	■	✓	
6	Sight Glass	8733951202	■		
7	Panel, Lower Front	8733952505	■		
8	Pressure switch (High fire)	8733952475	■	✓	
9	Pressure switch (low fire)	8733952468	■	✓	
10	Inducer gasket	8733952469	■	✓	
11	Flue discharge elbow	8733952470	■		
12	Flue discharge pipe joint assembly	8733952471	■		
13	Junction box cover	8733952472	■		
14	Junction box	8733952476	■		
15	Flue discharge clasp	8733952500	■		
16	Pressure switch (water level)	8733952467	■	✓	
17	Electric control box assembly	8733952473	■		
17.1	Transformer	8733951192	■	✓	
17.2	Main control board assembly	8733952477	■	✓	
17.3	Terminal block	8733952478	■		
18	Door switch	8733951212	■	✓	
19	Blower Housing	8733952479	■		
20	Fan mounted temperature limit switch	8733952480	■		
21	ECM blower motor	8733952481	■	✓	
22	Motor bracket ass'y I	8733952482	■		
23	Motor bracket	8733952483	■		
24	Bottom support Plate	8733952506	■		
25	Bottom Return Plate	8733952507	■		
26	Cabinet assembly	8733952508	■		
26.1	Blower Partition Panel	8733952539	■		
27	Supporting bar assembly	8733952488	■		
28	Panel, Top	8733952510	■		
29	Air inlet pipe joint	8733952490	■		
30	Heat exchanger assembly	8733952511	■		
30.1	Primary heat exchanger	8733952512	■		
30.2	Secondary heat exchanger	8733952513	■		
30.3	Spoiler	8733952494	■		
30.4	Heat exchanger gasket	8733952550	■	✓	
30.5	hoodforfumes gasket	8733952551	■	✓	
30.6	hoodforfumes	8733952552	■		
31	Drain pan gasket	8733952514	■	✓	
32	Chamber Limit switch - fixed	8733952496	■	✓	
33	Hose I	8733952542	■	✓	
34	Hose IV	8733952545	■	✓	
35	Hose II	8733952543	■	✓	
36	Hose III	8733952544	■	✓	
37	Wireharness	8733952546	■	✓	
BGH96M100C5A					

Bosch 96% AFUE Gas Furnace BGH96 Model Condensing Gas Furnace

BGH96M100D5A

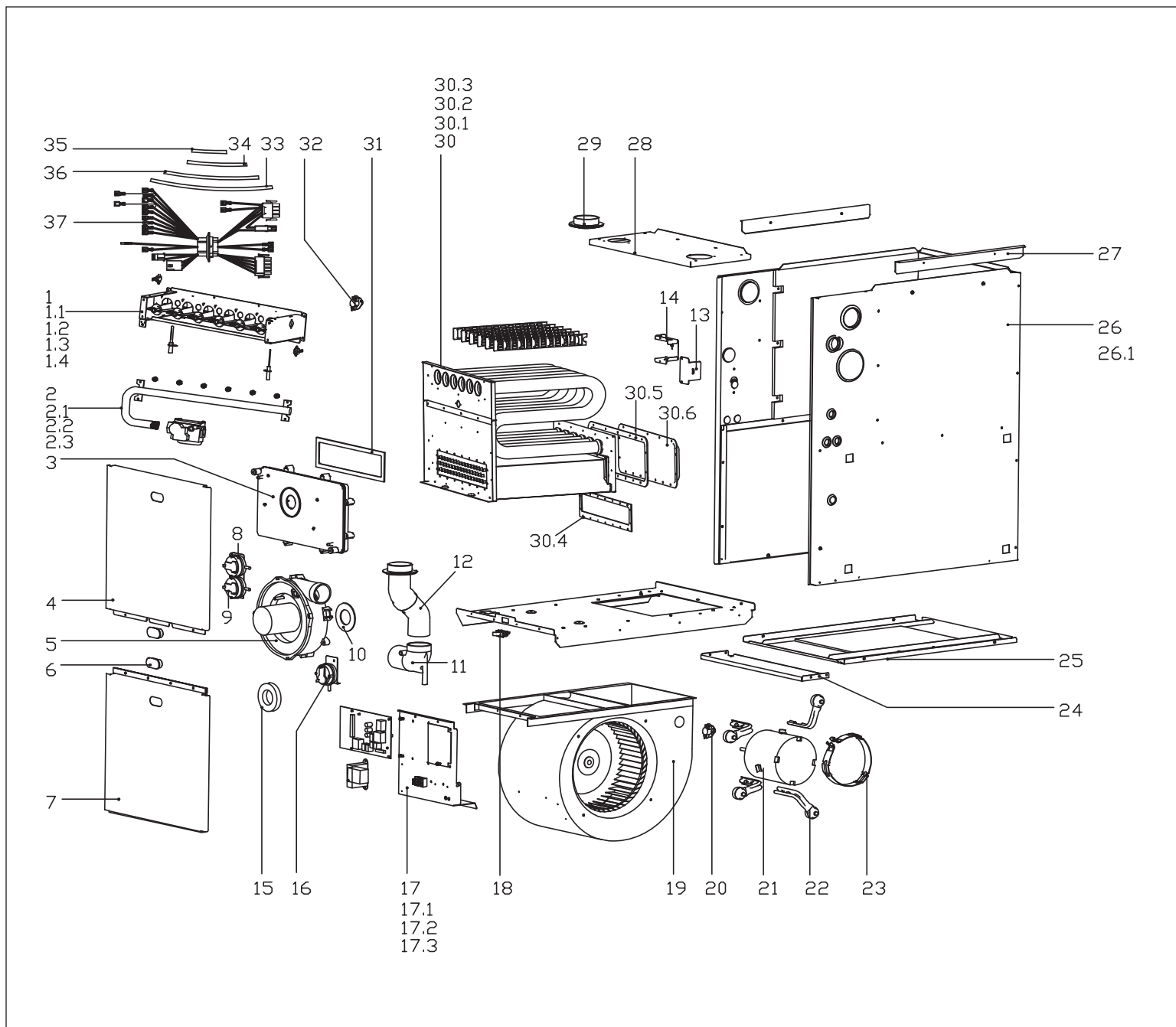


BOSCH

Pos.	Description	Ordering no.	BGH96M100D5A	Recommended Stocking	Remarks
1	Burner assembly	8733952497	■	✓	
1.1	Rollout switch - resettable	8733952457	■	✓	
1.2	Ignitor	8733951178	■	✓	
1.3	Flame sensor	8733951177	■	✓	
1.4	Burner	8733952458	■	✓	
2	Gas pipe assembly	8733952498	■		
2.1	Gas valve-two stage	8733952460	■	✓	
2.2	NG Orifice (0-2000,#45)	8733952461	■	✓	
2.3	Gas pipe	8733952499	■		
3	Drain box	8733952463	■		
4	Panel, Upper Front	8733952464	■		
5	Inducer	8733952465	■	✓	
6	Sight Glass	8733951202	■		
7	Panel, Lower Front	8733952466	■		
8	Pressure switch (High fire)	8733952475	■	✓	
9	Pressure switch (low fire)	8733952468	■	✓	
10	Inducer gasket	8733952469	■	✓	
11	Flue discharge elbow	8733952470	■		
12	Flue discharge pipe joint assembly	8733952471	■		
13	Junction box cover	8733952472	■		
14	Junction box	8733952476	■		
15	Flue discharge clasp	8733952500	■		
16	Pressure switch (water level)	8733952467	■	✓	
17	Electric control box assembly	8733952473	■		
17.1	Transformer	8733951192	■	✓	
17.2	Main control board assembly	8733952477	■	✓	
17.3	Terminal block	8733952478	■		
18	Door switch	8733951212	■	✓	
19	Blower Housing	8733952479	■	✓	
20	Fan mounted temperature limit switch	8733952480	■	✓	
21	ECM blower motor	8733952481	■	✓	
22	Motor bracket ass'y I	8733952482	■		
23	Motor bracket	8733952483	■		
24	Bottom support Plate	8733952484	■		
25	Bottom Return Plate	8733952485	■		
26	Cabinet assembly	8733952486	■		
26.1	Blower Partition Panel	8733952487	■		
27	Supporting bar assembly	8733952488	■		
28	Panel,Top	8733952489	■		
29	Air inlet pipe joint	8733952490	■		
30	Heat exchanger assembly	8733952501	■		
30.1	Primary heat exchanger	8733952502	■		
30.2	Secondary heat exchanger	8733952493	■		
30.3	Spoiler	8733952494	■		
30.4	Heat exchanger gasket	8733952547	■	✓	
30.5	hoodforfumes gasket	8733952548	■	✓	
30.6	hoodforfumes	8733952549	■		
31	Drain pan gasket	8733952495	■	✓	
32	Chamber Limit switch - fixed	8733952496	■	✓	
33	Hose I	8733952542	■	✓	
34	Hose IV	8733952545	■	✓	
35	Hose II	8733952543	■	✓	
36	Hose III	8733952544	■	✓	
37	Wireharness	8733952546	■	✓	
BGH96M100D5A					

Bosch 96% AFUE Gas Furnace BGH96 Model Condensing Gas Furnace

BGH96M120D5A



BOSCH

Pos.	Description	Ordering no.	BGH96M120D5A	Recommended Stocking	Remarks
1	Burner assembly	8733952456	■	✓	
1.1	Rollout switch - resettable	8733952457	■	✓	
1.2	Ignitor	8733951178	■	✓	
1.3	Flame sensor	8733951177	■	✓	
1.4	Burner	8733952458	■	✓	
2	Gas pipe assembly	8733952459	■		
2.1	Gas valve-two stage	8733952460	■	✓	
2.2	NG Orifice (0-2000,#45)	8733952461	■	✓	
2.3	Gas pipe	8733952462	■		
3	Drain box	8733952463	■		
4	Panel, Upper Front	8733952464	■		
5	Inducer	8733952465	■	✓	
6	Sight Glass	8733951202	■		
7	Panel, Lower Front	8733952466	■		
8	Pressure switch (High fire)	8733952475	■	✓	
9	Pressure switch (low fire)	8733952468	■	✓	
10	Inducer gasket	8733952469	■	✓	
11	Flue discharge elbow	8733952470	■		
12	Flue discharge pipe joint assembly	8733952471	■		
13	Junction box cover	8733952472	■		
14	Junction box	8733952476	■		
15	Flue discharge clasp	8733952474	■		
16	Pressure switch (water level)	8733952467	■	✓	
17	Electric control box assembly	8733952473	■		
17.1	Transformer	8733951192	■	✓	
17.2	Main control board assembly	8733952477	■	✓	
17.3	Terminal block	8733952478	■		
18	Door switch	8733951212	■	✓	
19	Blower Housing	8733952479	■	✓	
20	Fan mounted temperature limit switch	8733952480	■	✓	
21	ECM blower motor	8733952481	■	✓	
22	Motor bracket ass'y I	8733952482	■		
23	Motor bracket	8733952483	■		
24	Bottom support Plate	8733952484	■		
25	Bottom Return Plate	8733952485	■		
26	Cabinet assembly	8733952486	■		
26.1	Blower Partition Panel	8733952487	■		
27	Supporting bar assembly	8733952488	■		
28	Panel, Top	8733952489	■		
29	Air inlet pipe joint	8733952490	■		
30	Heat exchanger assembly	8733952491	■		
30.1	Primary heat exchanger	8733952492	■		
30.2	Secondary heat exchanger	8733952493	■		
30.3	Spoiler	8733952494	■		
30.4	Heat exchanger gasket	8733952547	■	✓	
30.5	hoodforfumes gasket	8733952548	■	✓	
30.6	hoodforfumes	8733952549	■		
31	Drain pan gasket	8733952495	■	✓	
32	Chamber Limit switch - fixed	8733952496	■	✓	
33	Hose I	8733952542	■	✓	
34	Hose IV	8733952545	■	✓	
35	Hose II	8733952543	■	✓	
35	Hose III	8733952544	■	✓	
37	Wireharness	8733952546	■	✓	
BGH96M120D5A					

Pos.	Description	Ordering no.	BGH96M060B3A	BGH96M080B3A	BGH96M080C4A	BGH96M100C5A	BGH96M100D5A	BGH96M120D5A	Remarks
1	Burner assembly	8733952535	■						
1	Burner assembly	8733952515		■	■				
1	Burner assembly	8733952497				■	■		
1	Burner assembly	8733952456						■	
1.1	Rollout switch - resettable	8733952457	■	■	■	■	■	■	
1.2	Ignitor	8733951178	■	■	■	■	■	■	
1.3	Flame sensor	8733951177	■	■	■	■	■	■	
1.4	Burner	8733952458	■	■	■	■	■	■	
2	Gas pipe assembly	8733952536	■						
2	Gas pipe assembly	8733952516		■	■				
2	Gas pipe assembly	8733952498				■	■		
2	Gas pipe assembly	8733952459						■	
2.1	Gas valve-two stage	8733952460	■	■	■	■	■	■	
2.2	NG Orifice (0-2000,#45)	8733952461	■	■	■	■	■	■	
2.3	Gas pipe	8733952537	■						
2.3	Gas pipe	8733952517		■	■				
2.3	Gas pipe	8733952499				■	■		
2.3	Gas pipe	8733952462						■	
3	Drain box	8733952523	■	■					
3	Drain box	8733952503			■	■			
3	Drain box	8733952463					■	■	
4	Panel, Upper Front	8733952524	■	■					
4	Panel, Upper Front	8733952504			■	■			
4	Panel, Upper Front	8733952464					■	■	
5	Inducer	8733952518	■	■	■				
5	Inducer	8733952465				■	■	■	
6	Sight Glass	8733951202	■	■	■	■	■	■	
7	Panel, Lower Front	8733952525	■	■					
7	Panel, Lower Front	8733952505			■	■			
7	Panel, Lower Front	8733952466					■	■	
8	Pressure switch(high fire)	8733952475	■	■	■	■	■	■	
9	Pressure switch(low fire)	8733952468	■	■	■	■	■	■	
10	Inducer gasket	8733952469	■	■	■	■	■	■	
11	Flue discharge elbow	8733952470	■	■	■	■	■	■	
12	Flue discharge pipe joint assembly	8733952471	■	■	■	■	■	■	
13	Junction box cover	8733952472	■	■	■	■	■	■	
14	Junction box	8733952476	■	■	■	■	■	■	
15	Flue discharge clasp	8733952538	■						
15	Flue discharge clasp	8733952519		■	■				
15	Flue discharge clasp	8733952500				■	■		
15	Flue discharge clasp	8733952474						■	
16	Pressure switch(water level)	8733952467	■	■	■	■	■	■	
17	Electric control box assembly	8733952473	■	■	■	■	■	■	
17.1	Transformer	8733951192	■	■	■	■	■	■	
17.2	Main control board assembly	8733952477	■	■	■	■	■	■	
17.3	Terminal block	8733952478	■	■	■	■	■	■	
18	Door switch	8733951212	■	■	■	■	■	■	
19	Blower Housing	8733952526	■	■					
19	Blower Housing	8733952479			■	■	■	■	
20	Fan mounted temperature limit switch	8733952480	■	■	■	■	■	■	
21	ECM blower motor	8733952520	■	■	■				
21	ECM blower motor	8733952481				■	■	■	
22	Motor bracket ass'y I	8733952482	■	■	■	■	■	■	
23	Motor bracket II	8733952483	■	■	■	■	■	■	
All Models: BGH96M060B3A BGH96M080B3A BGH96M080C4A BGH96M100C5A BGH96M100D5A BGH96M120D5A									

Pos.	Description	Ordering no.	BGH96M060B3A	BGH96M080B3A	BGH96M080C4A	BGH96M100C5A	BGH96M100D5A	BGH96M120D5A	Remarks
24	Bottom support Plate	8733952528	■	■					
24	Bottom support Plate	8733952506			■	■			
24	Bottom support Plate	8733952484					■	■	
25	Bottom Return Plate	8733952529	■	■					
25	Bottom Return Plate	8733952507			■	■			
25	Bottom Return Plate	8733952485					■	■	
26	Cabinet assembly	8733952530	■	■					
26	Cabinet assembly	8733952508			■	■			
26	Cabinet assembly	8733952486					■	■	
26.1	Blower Partition Panel	8733952509	■	■					
26.1	Blower Partition Panel	8733952539			■	■			
26.1	Blower Partition Panel	8733952487					■	■	
27	Supporting bar assembly	8733952488	■	■	■	■	■	■	
28	Panel,Top	8733952633	■	■					
28	Panel,Top	8733952510			■	■			
28	Panel,Top	8733952489					■	■	
29	Air inlet pipe joint	8733952490	■	■	■	■	■	■	
30	Heat exchanger assembly	8733952540	■						
30	Heat exchanger assembly	8733952531		■					
30	Heat exchanger assembly	8733952521			■				
30	Heat exchanger assembly	8733952511				■			
30	Heat exchanger assembly	8733952501					■		
30	Heat exchanger assembly	8733952491						■	
30.1	Primary heat exchanger	8733952541	■						
30.1	Primary heat exchanger	8733952532		■					
30.1	Primary heat exchanger	8733952522			■				
30.1	Primary heat exchanger	8733952512				■			
30.1	Primary heat exchanger	8733952502					■		
30.1	Primary heat exchanger	8733952492						■	
30.2	Secondary heat exchanger	8733952533	■	■					
30.2	Secondary heat exchanger	8733952513			■	■			
30.2	Secondary heat exchanger	8733952493					■	■	
30.3	Spoiler	8733952494	■	■	■	■	■	■	
30.4	Heat exchanger gasket	8733952553	■	■					
30.4	Heat exchanger gasket	8733952550			■	■			
30.4	Heat exchanger gasket	8733952547					■	■	
30.5	hoodforfumes gasket	8733952554	■	■					
30.5	hoodforfumes gasket	8733952551			■	■			
30.5	hoodforfumes gasket	8733952548					■	■	
30.6	hoodforfumes	8733952555	■	■					
30.6	hoodforfumes	8733952552			■	■			
30.6	hoodforfumes	8733952549					■	■	
31	Drain pan gasket	8733952534	■	■					
31	Drain pan gasket	8733952514			■	■			
31	Drain pan gasket	8733952495					■	■	
32	Chamber Limit switch - fixed	8733952496	■	■	■	■	■	■	
33	Hose	8733952542	■	■	■	■	■	■	
34	Hose	8733952545	■	■	■	■	■	■	
35	Hose	8733952543	■	■	■	■	■	■	
36	Hose	8733952544	■	■	■	■	■	■	
37	Wire harness	8733952546	■	■	■	■	■	■	
	3 Amp Fuse	8733951301	■	■	■	■	■	■	
All Models: BGH96M060B3A BGH96M080B3A BGH96M080C4A BGH96M100C5A BGH96M100D5A BGH96M120D5A									

Gas Conversion Kit									
Pos.	Description	Ordering no.	BGH96M060B3A	BGH96M080B3A	BGH96M080C4A	BGH96M100C5A	BGH96M100D5A	BGH96M120D5A	Remarks
	NG Orifice (0-2000ft) #45	8733952997	■	■	■	■	■	■	
	LP Orifice (0-2000ft) #55	8733952998	■	■	■	■	■	■	
	NG Orifice (2000-4000ft) #47	8733952999	■	■	■	■	■	■	
	LP Orifice (2000-4000ft) #56	8733953000	■	■	■	■	■	■	
	NG Orifice (4000-6000ft) #48	8733953001	■	■	■	■	■	■	
	LP Orifice (4000-6000ft) #57	8733951604	■	■	■	■	■	■	
	NG Orifice (6000-8000ft) #49	8733951218	■	■	■	■	■	■	
	LP Orifice (6000-8000ft) #58	8733952068	■	■	■	■	■	■	
	NG Orifice (8000-10000ft) #50	8733952069	■	■	■	■	■	■	
	LP Orifice (8000-10000ft) #59	8733952070	■	■	■	■	■	■	
	Conversion Kit (from NG to LP)	8733953504	■	■	■	■	■	■	
	Conversion Kit (From LP to NG)	8733953505	■	■	■	■	■	■	
All Models: BGH96M060B3A BGH96M080B3A BGH96M080C4A BGH96M100C5A BGH96M100D5A BGH96M120D5A									