



www.Source1Parts.com

RGF SERIES 80% SINGLE STAGE 33" MULTI-POSTION NATURAL GAS FURNACES W/HIGH EFFICIENCY MOTORS LO-NOX MODELS (Style A)

HVAC SERVICE PARTS

Supersedes: 035-23142-001 Rev. C (0815)

035-23142-001 Rev. D (0817)

1 of 4

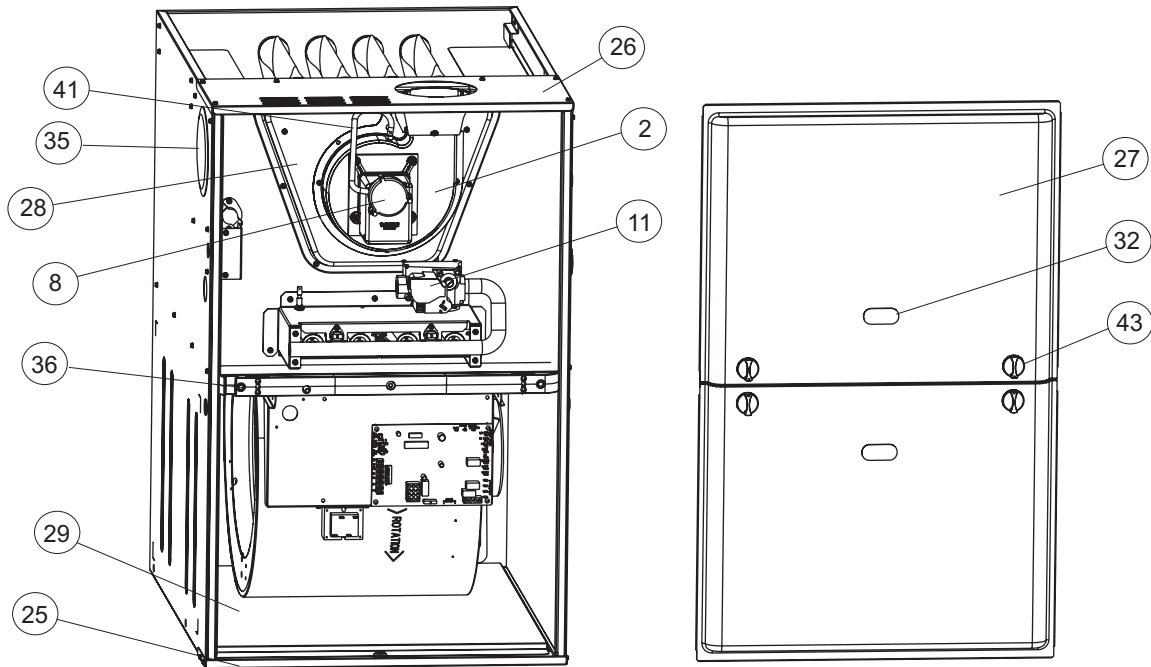


Figure 1: 80% SINGLE STAGE MULTI-POSTION LO-NOX NATURAL GAS FURNACES W/HIGH EFFICIENCY MOTORS

FIG	ITEM	DESCRIPTION	RGF1L060AE12MP11A	RGF1L080BE12MP11A	RGF1L080CE16MP11A
			(3 BURNER)	(4 BURNER)	(4 BURNER)
MOTOR					
2	1	MOTOR, BLOWER	S1-02436093000	S1-02436093000	S1-02436094000
1,2	2	BLOWER, COMBUSTION	S1-02642548000	S1-02649688000	S1-02649688000
ELECTRICAL					
	3				
2,3	4	SWITCH, LIMIT(250 Deg Man Reset,2 Req'd)	S1-02541318000	S1-02541318000	S1-02541318000
2	5	CONTROL, FURNACE	S1-03102951001	S1-03102951001	S1-03102951001
3	6	IGNITER	S1-02549808000	S1-02549808000	S1-02549808000
3	7	SENSOR, FLAME	S1-02537499000	S1-02537499000	S1-02537499000
1,2	8	SWITCH, PRESSURE	S1-02435785000	S1-02435785000	S1-02435785000
2	9	SWITCH, DOOR	S1-02435738000	S1-02435738000	S1-02435738000
2	10	TRANSFORMER	S1-2940A3541	S1-2940A3541	S1-2940A3541
1,3	11	VALVE, GAS	S1-32537426000	S1-32537426000	S1-32537426000
2	12	CONTROL, TEMPERATURE	S1-02541321000	S1-02541320000	S1-02541320000
	13				
	14				
AIR MOVING					
2	15	HOUSING, BLOWER	S1-37327824001	S1-37327824001	S1-37327824002
2	16	WHEEL, BLOWER	S1-02619654709	S1-02619654709	S1-02619654014

NOTE: *Not Shown

New replacement parts shown in **bold** face type at the first printing of parts list dated 8/17.

Major components and suggested stocking items are shown with shaded item number.

"<" Across from row indicates a change in that row.

--- Not applicable to specified model.

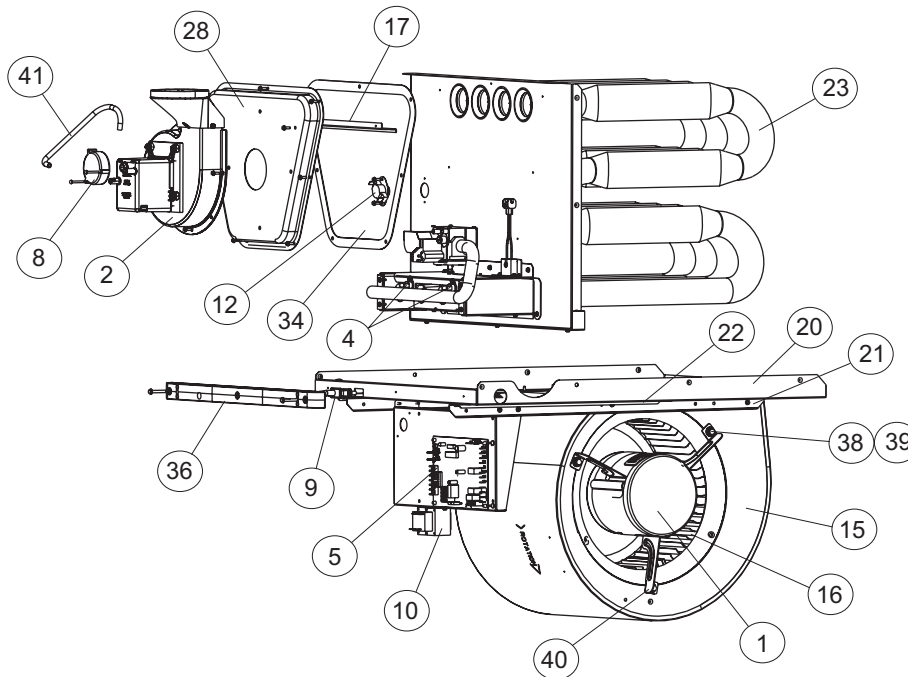


Figure 2: 80% SINGLE STAGE MULTI-POSTION LO-NOX NATURAL GAS FURNACES W/HIGH EFFICIENCY MOTORS

FIG	ITEM	DESCRIPTION	RGF1L060AE12MP11A	RGF1L080BE12MP11A	RGF1L080CE16MP11A
			(3 BURNER)	(4 BURNER)	(4 BURNER)
FABRICATED PARTS					
2	17	BAFFLE, FLUE	S1-07327829002	S1-07327829003	S1-07327829003
3	18	BURNER, MAIN GAS	S1-02920482000	S1-02920482000	S1-02920482000
	19				
2	20	SHELF, BLOWER	S1-07327823001	S1-07327823002	S1-07327823004
2	21	RAIL, BLOWER (2 Req'd)	S1-07327825001	S1-07327825001	S1-07327825001
2	22	BRACKET, BLOWER TRACK (2 Req'd)	S1-07327825002	S1-07327825002	S1-07327825002
2	23	HEAT EXCHANGER ASS'Y	S1-37327830002	S1-37327830003	S1-37327830005
3	24	MANIFOLD, GAS	S1-02924467000	S1-02924468000	S1-02924468000
1	25	PAN, BOTTOM	S1-07327841001	S1-07327841002	S1-07327841003
1	26	PANEL, TOP	S1-07327828001	S1-07327828002	S1-07327828003
1	27	PANEL, DOOR (2 Req'd)	S1-37327822001	S1-37327822002	S1-37327822003
1,2	28	VENT PAN, COMBUSTION (w/Gasket)	S1-07327826001	S1-07327826001	S1-07327826001
1	29	PANEL, BLOCKOFF	S1-07327827001	S1-07327827002	S1-07327827003
*	30	LO-NOX SCREEN	S1-02635452000	S1-02635452000	S1-02635452000
MISCELLANEOUS					
3	31	ORIFICE, BURNER (Natural #45)	S1-02921182045	S1-02921182045	S1-02921182045
1	32	SIGHT GLASS, OVAL (2 Req'd)	S1-02538899000	S1-02538899000	S1-02538899000
*	33	GASKET, FOAM (Door) (per ft.)	S1-02815517000	S1-02815517000	S1-02815517000
2	34	GASKET, INTAKE PAN	S1-02815510000	S1-02815510000	S1-02815510000
1	35	PLUG, VENT HOLE	S1-02815516000	S1-02815516000	S1-02815516000
1,2	36	BRACKET, DOOR	S1-02815512000	S1-02815513000	S1-02815514000
*	37	WIRING HARNESS, MAIN	S1-02541324000	S1-02541324000	S1-02541325000
2	38	FERRULE (3 Req'd)	S1-02320541000	S1-02320541000	S1-02320541000
2	39	GROMMET (3 Req'd)	S1-02814740000	S1-02814740000	S1-02814740000
2	40	MOTOR MOUNT (Includes item 38 & 39)	S1-37319831002	S1-37319831002	S1-37319831002
1,2	41	TUBING, SILICON	S1-02812499000	S1-02812499000	S1-02812499000
*	42	DIAGRAM, WIRING	437339	437339	437339
1	43	Knob, Quarter Turn (4 Req'd)	S1-02924485000	S1-02924485000	S1-02924485000
*	44	WIRING HARNESS, MOTOR POWER	S1-02543662000	S1-02543662000	S1-02543662000
*	45	WIRING HARNESS, MOTOR CONTROL	S1-02543663000	S1-02543663000	S1-02543663000

NOTE: *Not Shown

New replacement parts shown in **bold** face type at the first printing of parts list dated 8/17.

Major components and suggested stocking items are shown with shaded item number.

"<" Across from row indicates a change in that row.

--- Not applicable to specified model.

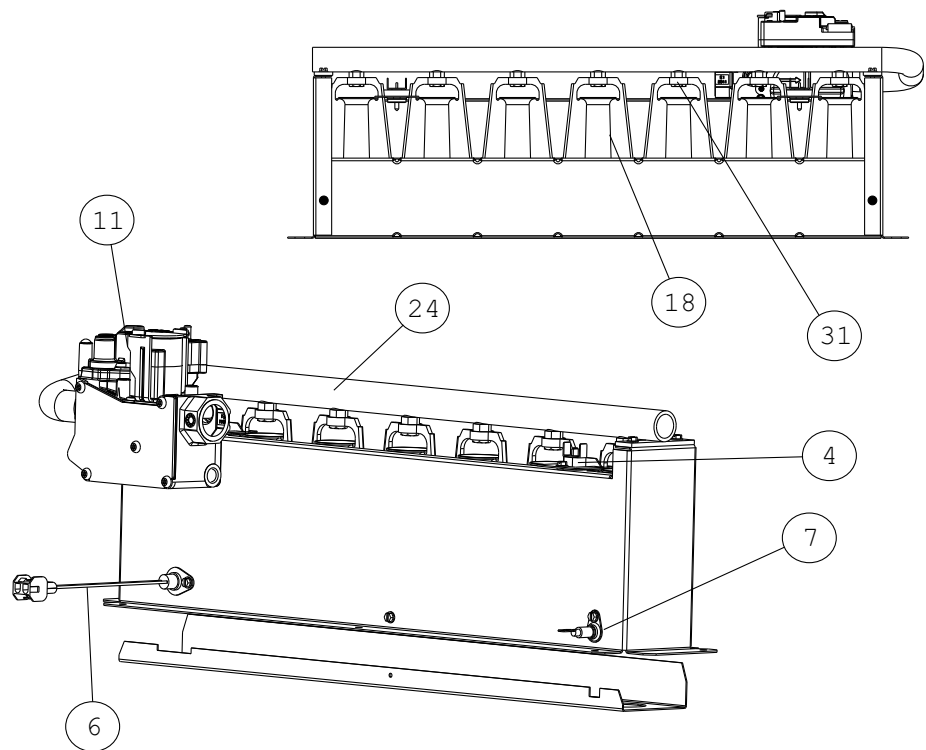


Figure 3: GAS CONTROLS

FIG	ITEM	DESCRIPTION	RGF1L100CE16MP11A	RGF1L100CE20MP11A	RGF1L120CE20MP11A
			(5 BURNER)	(5 BURNER)	(6 BURNER)
MOTOR					
2	1	MOTOR, BLOWER	S1-02436094000	S1-02436095000	S1-02436095000
1,2	2	BLOWER, COMBUSTION	S1-02642549000	S1-02642549000	S1-02642550000
ELECTRICAL					
*	3	CHOKE, PF	---	S1-02435605000	S1-02435605000
2,3	4	SWITCH, LIMIT (250 Deg Man Reset,2 Req'd)	S1-02541318000	S1-02541318000	S1-02541318000
2	5	CONTROL, FURNACE	S1-03102951001	S1-03102951001	S1-03102951001
3	6	IGNITER	S1-02549808000	S1-02549808000	S1-02549808000
3	7	SENSOR, FLAME	S1-02537499000	S1-02537499000	S1-02537499000
1,2	8	SWITCH, PRESSURE	S1-02435786000	S1-02435786000	S1-02435785000
2	9	SWITCH, DOOR	S1-02435738000	S1-02435738000	S1-02435738000
2	10	TRANSFORMER	S1-2940A3541	S1-2940A3541	S1-2940A3541
1,3	11	VALVE, GAS	S1-32537426000	S1-32537426000	S1-32537426000
2	12	CONTROL, TEMPERATURE	S1-02541321000	S1-02541321000	S1-02541320000
	13				
	14				
AIR MOVING					
2	15	HOUSING, BLOWER	S1-37327824002	S1-37327824003	S1-37327824003
2	16	WHEEL, BLOWER	S1-02619654014	S1-02638510000	S1-02638510000

NOTE: *Not Shown
New replacement parts shown in **bold** face type at the first printing of parts list dated 8/17.
Major components and suggested stocking items are shown with shaded item number.
"←" Across from row indicates a change in that row.
--- Not applicable to specified model.

FIG	ITEM	DESCRIPTION	RGF1L100CE16MP11A	RGF1L100CE20MP11A	RGF1L120CE20MP11A
			(5 BURNER)	(5 BURNER)	(6 BURNER)
FABRICATED PARTS					
2	17	BAFFLE, FLUE	S1-07327921001	S1-07327921001	S1-07327829005
3	18	BURNER, MAIN GAS	S1-02920482000	S1-02920482000	S1-02920482000
	19				
2	20	SHELF, BLOWER	S1-07327823003	S1-07327823004	S1-07327823004
2	21	RAIL, BLOWER (2 Req'd)	S1-07327825001	S1-07327825001	S1-07327825001
2	22	BRACKET, BLOWER TRACK (2 Req'd)	S1-07327825002	S1-07327825002	S1-07327825002
2	23	HEAT EXCHANGER ASS'Y	S1-37327830006	S1-37327830006	S1-37327830007
3	24	MANIFOLD, GAS	S1-02924469000	S1-02924469000	S1-02924470000
1	25	PAN, BOTTOM	S1-07327841003	S1-07327841003	S1-07327841003
1	26	PANEL, TOP	S1-07327828003	S1-07327828003	S1-07327828004
1	27	PANEL, DOOR (2 Req'd)	S1-37327822003	S1-37327822003	S1-37327822003
1,2	28	VENT PAN, COMBUSTION (w/Gasket)	S1-07327826001	S1-07327826001	S1-07327826002
1	29	PANEL, BLOCKOFF	S1-07327827003	S1-07327827003	S1-07327827003
*	30	LO-NOX SCREEN	S1-02635452000	S1-02635452000	S1-02635452000
MISCELLANEOUS					
3	31	ORIFICE, BURNER (Natural #45)	S1-02921182045	S1-02921182045	S1-02921182045
1	32	SIGHT GLASS, OVAL (2 Req'd)	S1-02538899000	S1-02538899000	S1-02538899000
*	33	GASKET, FOAM (Door) (per ft.)	S1-02815517000	S1-02815517000	S1-02815517000
2	34	GASKET, INTAKE PAN	S1-02815510000	S1-02815510000	S1-02815511000
1	35	PLUG, VENT HOLE	S1-02815516000	S1-02815516000	S1-02815516000
1,2	36	BRACKET, DOOR	S1-02815514000	S1-02815514000	S1-02815514000
*	37	WIRING HARNESS, MAIN	S1-02541325000	S1-02541325000	S1-02541325000
2	38	FERRULE (3 Req'd)	S1-02320541000	S1-02320541000	S1-02320541000
2	39	GROMMET (3 Req'd)	S1-02814740000	S1-02814740000	S1-02814740000
2	40	MOTOR MOUNT (Includes item 38 & 39)	S1-37319831002	S1-37319831002	S1-37319831002
1,2	41	TUBING, SILICON	S1-02812499000	S1-02812499000	S1-02812499000
*	42	DIAGRAM, WIRING	437339	437339	437339
1	43	KNOB, QUARTER TURN (4 Req'd)	S1-02924485000	S1-02924485000	S1-02924485000
*	44	WIRING HARNESS, MOTOR POWER	S1-02543662000	S1-02543662000	S1-02543662000
*	45	WIRING HARNESS, MOTOR CONTROL	S1-02543663000	S1-02543663000	S1-02543663000

NOTE: *Not Shown

New replacement parts shown in **bold** face type at the first printing of parts list dated 8/17.

Major components and suggested stocking items are shown with shaded item number.

"←" Across from row indicates a change in that row.

--- Not applicable to specified model.

TO ORDER AUTHORIZED FACTORY REPLACEMENT PARTS - Contact your Source1 HVAC Parts Distributor or visit our website at **www.Source1Parts.com** for a Distributor and Dealer listing.