



# REPAIR PARTS

## GMS8\* Upflow/Horizontal/Single Stage/Multi-Speed 80% AFUE Gas Furnace

Models and manufacturing  
numbers in this manual

GMS80453ANA

GMS80453AXA

GMS80703ANA

GMS80704BNA

GMS80704BXA

GMS80903BNA

GMS80904BNA

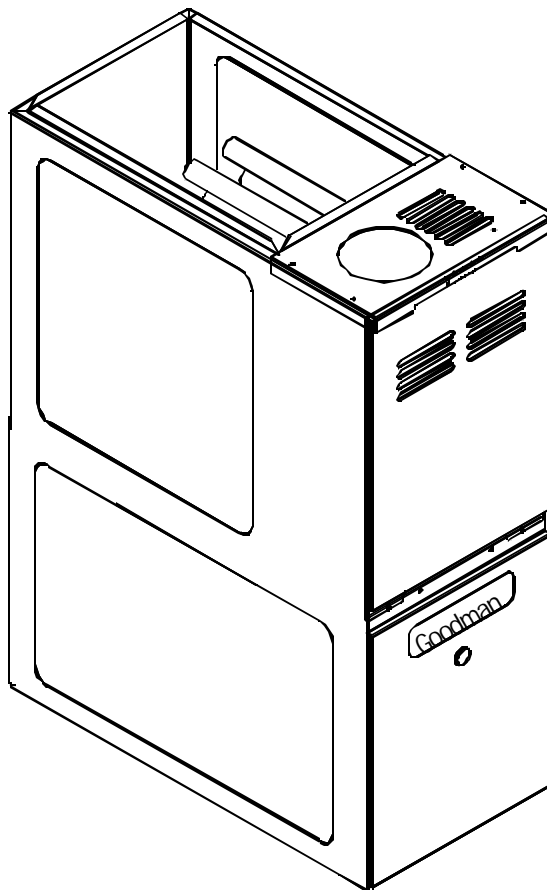
GMS80905CNA

GMS80905CXA

GMS81155CNA

GMS81155CXA

GMS81405DNA



## Important Information

---

Goodman Manufacturing Company, L.P. is not responsible for personal injury or property damage resulting from improper service. Review all service information before beginning repairs.

Warranty service must be performed by an authorized technician, using authorized factory parts. If service is required after the warranty expires, Goodman Manufacturing Company, L.P. also recommends contacting an authorized technician and using authorized factory parts.

For assistance within the U.S.A. contact:

Consumer Affairs Department  
Goodman Manufacturing Company, L.P.  
7401 Security Way  
Houston, Texas 77040  
877-254-4729-Telephone  
713-863-2382-Facsimile

For assistance outside the U.S.A. contact:

International Division  
Goodman Manufacturing Company, L.P.  
7401 Security Way  
Houston, Texas 77040  
713-861-2500-Telephone  
713-863-2382-Facsimile

Index

Functional Parts List .....	4 - 5
Illustration and Parts .....	6 - 13

*Views shown are for parts illustrations only, not servicing procedures.*

Text Codes:

- AR - As Required
- NA - Not Available
- NS - Not Shown
- 00000000 - See Note
- QTY - Quantity    Example (QTY 3) (If Quantity not shown, Quantity = 1)
- M - Model    Example (M1) (If M Code not shown, then part is used on all Models)

Expanded Model Nomenclature:

Example	
M1 - Model#1	P _____
M2 - Model#2	P _____
M3 - Model#3	P _____

# Functional Parts

## Part

## No: Description:

---

B1370142	AIR PRESSURE SWITCH, .60" WC (M1, M2, M3, M4, M5, M6, M7)
B1370158	AIR PRESSURE SWITCH, .70" WC (M8, M9, M10, M11)
B1370179	AIR PRESSURE SWITCH, .75" WC (M12)
B1370155	AUX. LIMIT SWITCH 120°F
B1368047	BLOWER WHEEL (10 X 10) (M8, M9, M10, M11, M12)
B1368034	BLOWER WHEEL (10 X 6) (M1, M2, M3)
B1368016	BLOWER WHEEL (10 X 8) (M4, M5, M6, M7)
B945672	CAPACITOR, 12.5/370 MFD (M1, M2, M3, M6)
B945665	CAPACITOR, 20/370 MFD (M4, M5, M7, M8, M9, M10, M11)
B945666	CAPACITOR, 25/370 MFD (M12)
B1370820	DOOR SWITCH W/WIRES
B1172606	FLAME SENSOR
B4026005	GAS MANIFOLD, 2 CELL (M1, M2)
B4026006	GAS MANIFOLD, 3 CELL (M3, M4, M5)
B4026007	GAS MANIFOLD, 4 CELL (M6, M7, M8, M9)
B4026008	GAS MANIFOLD, 5 CELL (M10, M11)
B4026009	GAS MANIFOLD, 6 CELL (M12)
B4089343	GAS ORIFICE, #43 (QTY 3) (M3, M4, M5)
B4089343	GAS ORIFICE, #43 (QTY 4) (M6, M7, M8, M9)
B4089343	GAS ORIFICE, #43 (QTY 5) (M10, M11)
B4089343	GAS ORIFICE, #43 (QTY 6) (M12)
B4089343	GAS ORIFICE, #43 (QTY2) (M1, M2)
B1282614	GAS VALVE
B1809926S	H.S.I. BOARD, 12-PIN
4021300S	HEAT EXCHANGER SUB ASM., 2 CELL 14" (M1, M2)
4021307S	HEAT EXCHANGER SUB ASM., 3 CELL 14" (M3)
4021308S	HEAT EXCHANGER SUB ASM., 3 CELL 17.5" (M4, M5)
4021309S	HEAT EXCHANGER SUB ASM., 4 CELL 17.5" (M6, M7)
4021310S	HEAT EXCHANGER SUB ASM., 4 CELL 21" (M8, M9)
4021311S	HEAT EXCHANGER SUB ASM., 5 CELL 21" (M10, M11)
4021312S	HEAT EXCHANGER SUB ASM., 6 CELL 24" (M12)
20165703	IGNITOR
10624003	INSERT-MESH TUBES, 2 CELL (M2)
10624003	INSERT-MESH TUBES, 3 CELL (M5)
10624003	INSERT-MESH TUBES, 4 CELL (M9)
10624003	INSERT-MESH TUBES, 5 CELL (M11)
B4022700	INSHOT BURNER, (QTY 2) (M1, M2)
B4022700	INSHOT BURNER, (QTY 3) (M3, M4, M5)
B4022700	INSHOT BURNER, (QTY 4) (M6, M7, M8, M9)
B4022700	INSHOT BURNER, (QTY 5) (M10, M11)
B4022700	INSHOT BURNER, (QTY 6) (M12)
B1340024	MOTOR, DIRECT DRIVE 1/2 HP (M4, M5, M6, M7, M8, M9, M10, M11)
B1340025	MOTOR, DIRECT DRIVE 1/3 HP (M1, M2, M3)
20046618	MOTOR, DIRECT DRIVE 3/4 HP (M12)
B1370145	ROLLOUT, SWITCH 300°F W/O BRKT. (QTY 2)
B1370198	SWITCH, PRIMARY LIMIT, 150°F (M6, M10, M11, M12)
B1370187	SWITCH, PRIMARY LIMIT, 160°F (M3)
B1370188	SWITCH, PRIMARY LIMIT, 170°F (M4, M5, M7)
B1370189	SWITCH, PRIMARY LIMIT, 200°F (M8, M9)
B1370190	SWITCH, PRIMARY LIMIT, 210°F (M1, M2)
B1141605	TRANSFORMER 120V TO 24V, 40 VA
B4059001S	VENT MOTOR 80%

# Functional Parts

Part No:	Description:
----------	--------------

---

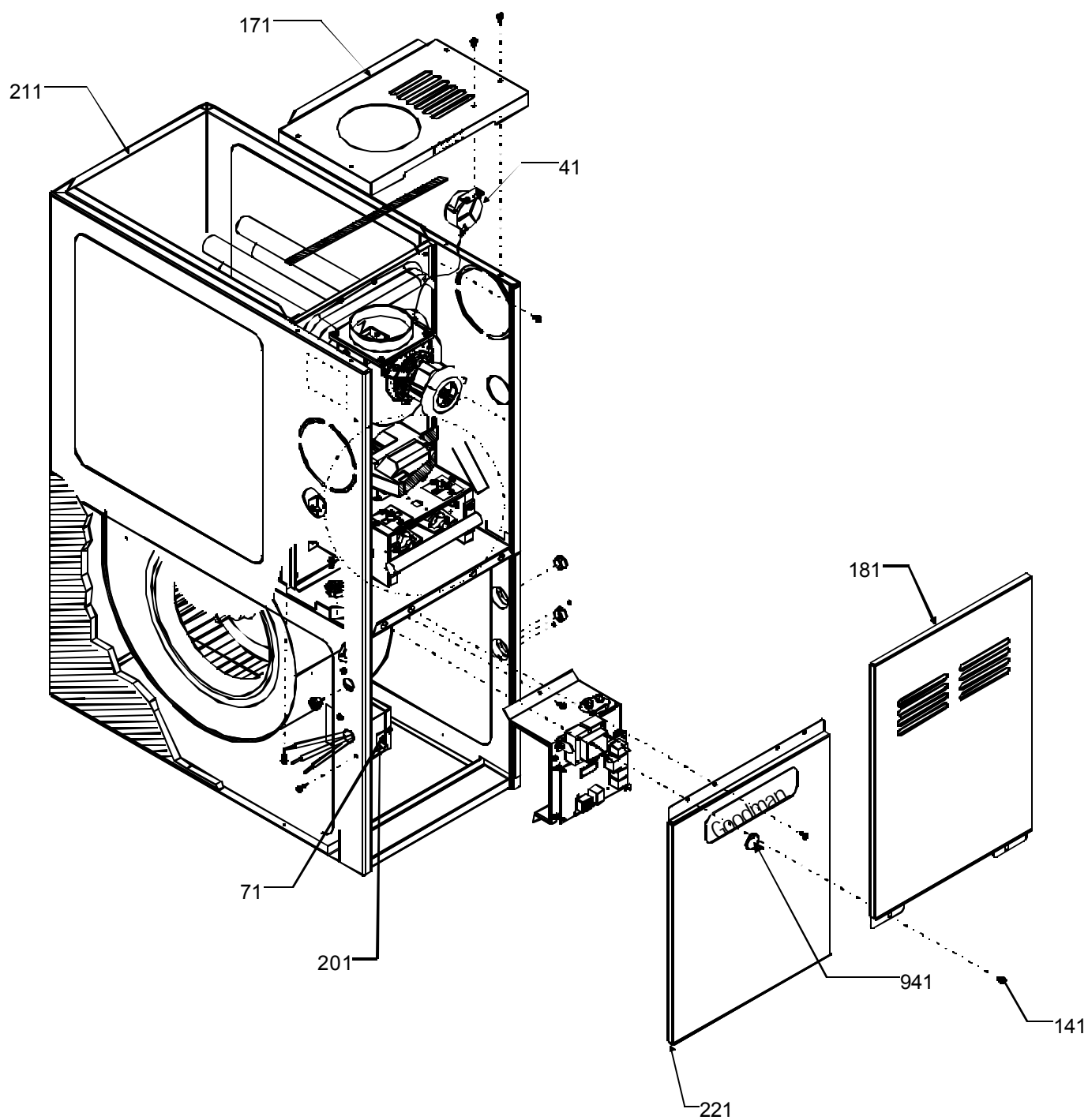
**SPECIAL PARTS**

HI-115	HOMEOWNER'S INFORMATION MANUAL
IO-242	INSTALLATION INSTRUCTION
RP-246	MANUAL, REPAIR PARTS
RT6622004	MANUAL, TECHNICAL INFORMATION (M1, M3, M4, M6, M7, M8, M10, M12)
RT6622005	MANUAL, TECHNICAL INFORMATION (M2, M5, M9, M11)
PW-321	PRODUCT WARRANTY
SS-379	SPECIFICATION SHEET
B260S8292	SPRAY TOUCH-UP PAINT, ARCH. GRAY

Expanded Model Nomenclature

M1 - GMS80453ANA
M2 - GMS80453AXA
M3 - GMS80703ANA
M4 - GMS80704BNA
M5 - GMS80704BXA
M6 - GMS80903BNA
M7 - GMS80904BNA
M8 - GMS80905CNA
M9 - GMS80905CXA
M10 - GMS81155CNA
M11 - GMS81155CXA
M12 - GMS81405DNA

## Cabinet



# Cabinet

Ref. Part No: No:	Description:	Ref. Part No: No:	Description:
----------------------	--------------	----------------------	--------------

Image 1:

41	B1370142	AIR PRESSURE SWITCH, .60" WC (M1, M2, M3, M4, M5, M6, M7)
41	B1370158	AIR PRESSURE SWITCH, .70" WC (M8, M9, M10, M11)
41	B1370179	AIR PRESSURE SWITCH, .75" WC (M12)
71	B1370820	DOOR SWITCH W/WIRES
171	4008000PDG	TOP, PAINTED, 14" (M1, M2, M3)
171	4008001PDG	TOP, PAINTED, 17.5" (M4, M5, M6, M7)
171	4008002PDG	TOP, PAINTED, 21" (M8, M9, M10, M11)
171	4008003PDG	TOP, PAINTED, 24.5" (M12)
181	4012000PDG	DOOR CONTROL ACCESS, 14" (M1, M2, M3)
181	4012001PDG	DOOR CONTROL ACCESS, 17.5" (M4, M5, M6, M7)
181	4012002PDG	DOOR CONTROL ACCESS, 21" (M8, M9, M10, M11)
181	4012003PDG	DOOR CONTROL ACCESS, 24.5" (M12)
201	4014500	J-BOX
201	4015500	J-BOX COVER
211	4026523S	WRAPPER/INSULATION ASM.,14" (M1, M2, M3)
211	4026524S	WRAPPER/INSULATION ASM.,17.5" (M4, M5, M6, M7)
211	4026525S	WRAPPER/INSULATION ASM.,21" (M8, M9, M10, M11)
211	4026526S	WRAPPER/INSULATION ASM.,24.5" (M12)
221	4015000PDG	BLOWER ACCESS DOOR, 14" (M1, M2, M3)
221	4015001PDG	BLOWER ACCESS DOOR, 17.5" (M4, M5, M6, M7)
221	4015002PDG	BLOWER ACCESS DOOR, 21" (M8, M9, M10, M11)
221	4015003PDG	BLOWER ACCESS DOOR, 24.5" (M12)
941	B1392139	VIEW PORT BUSHING, CLEAR
NS	B260S8292	SPRAY TOUCH-UP PAINT, ARCH. GRAY

Expanded Model Nomenclature

M1 - GMS80453ANA
M2 - GMS80453AXA
M3 - GMS80703ANA
M4 - GMS80704BNA
M5 - GMS80704BXA
M6 - GMS80903BNA
M7 - GMS80904BNA
M8 - GMS80905CNA
M9 - GMS80905CXA
M10 - GMS81155CNA
M11 - GMS81155CXA
M12 - GMS81405DNA

Blower Assembly

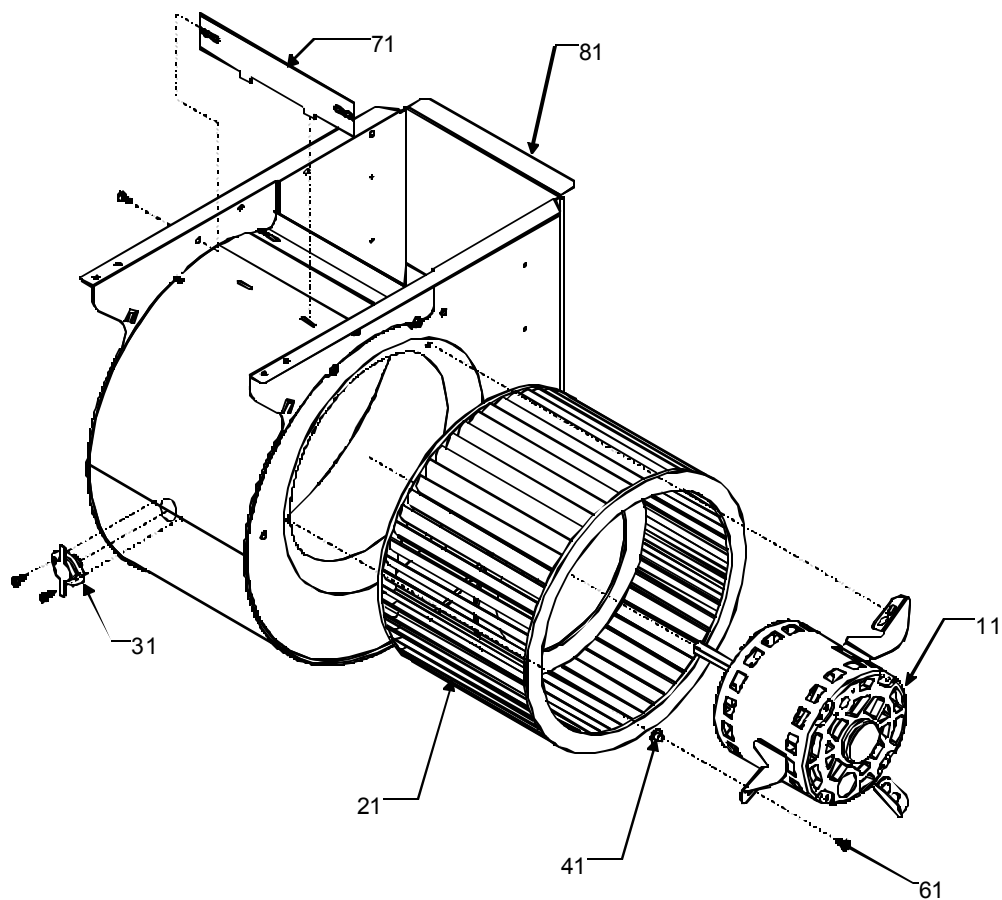
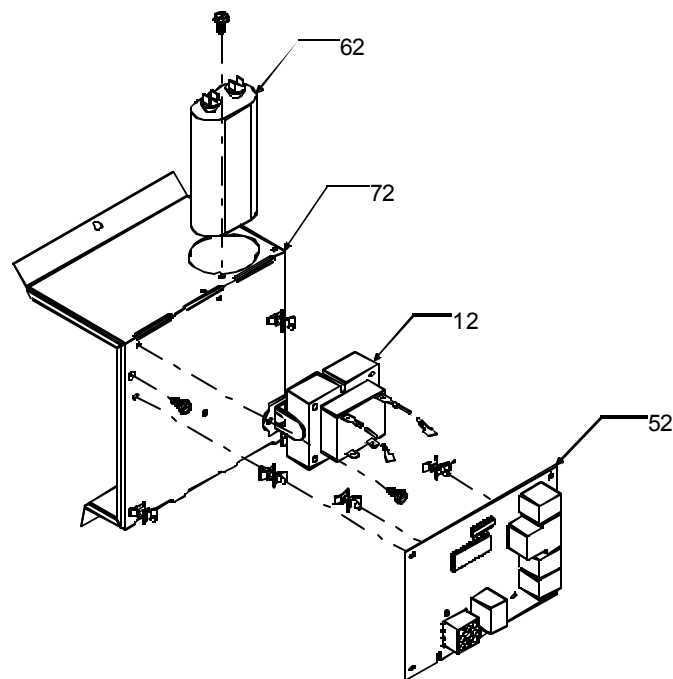


Image 1

Image 2





# Blower Assembly

Ref. Part			Ref. Part		
No:	No:	Description:	No:	No:	Description:

Image 1:

11	B1340024	MOTOR, DIRECT DRIVE 1/2 HP (M4, M5, M6, M7, M8, M9, M10, M11)
11	B1340025	MOTOR, DIRECT DRIVE 1/3 HP (M1, M2, M3)
11	20046618	MOTOR, DIRECT DRIVE 3/4 HP (M12)
21	B1368047	BLOWER WHEEL (10 X 10) (M8, M9, M10, M11, M12)
21	B1368034	BLOWER WHEEL (10 X 6) (M1, M2, M3)
21	B1368016	BLOWER WHEEL (10 X 8) (M4, M5, M6, M7)
31	B1370155	AUX. LIMIT SWITCH 120°F
41	B1392143	GROMMET F/TORSIN FLEX (QTY 3)
61	B1393331	MACH. SCREW 1/4-20 TYPE F (QTY 3)
71	764741	BLWR CUT-OFF, (10 X 10) (M8, M9, M10, M11, M12)
71	764739	BLWR CUT-OFF, (10 X 6) (M1, M2, M3)
71	764740	BLWR CUT-OFF, (10 X 8) (M4, M5, M6, M7)
81	2539307	BLOWER SHELL ASM (10 X 10) (M8, M9, M10, M11, M12)
81	2539305	BLOWER SHELL ASM (10 X 6) (M1, M2, M3)
81	2539306	BLOWER SHELL ASM (10 X 8) (M4, M5, M6, M7)

Image 2:

12	B1141605	TRANSFORMER 120V TO 24V, 40 VA
52	B1809926S	H.S.I. BOARD, 12-PIN
62	B945672	CAPACITOR, 12.5/370 MFD (M1, M2, M3, M6)
62	B945665	CAPACITOR, 20/370 MFD (M4, M5, M7, M8, M9, M10, M11)
62	B945666	CAPACITOR, 25/370 MFD (M12)
72	1815817	CONTROL MOUNT PANEL

Expanded Model Nomenclature

M1 - GMS80453ANA
M2 - GMS80453AXA
M3 - GMS80703ANA
M4 - GMS80704BNA
M5 - GMS80704BXA
M6 - GMS80903BNA
M7 - GMS80904BNA
M8 - GMS80905CNA
M9 - GMS80905CXA
M10 - GMS81155CNA
M11 - GMS81155CXA
M12 - GMS81405DNA

Heat Exchanger Assy / Flue Collector Box

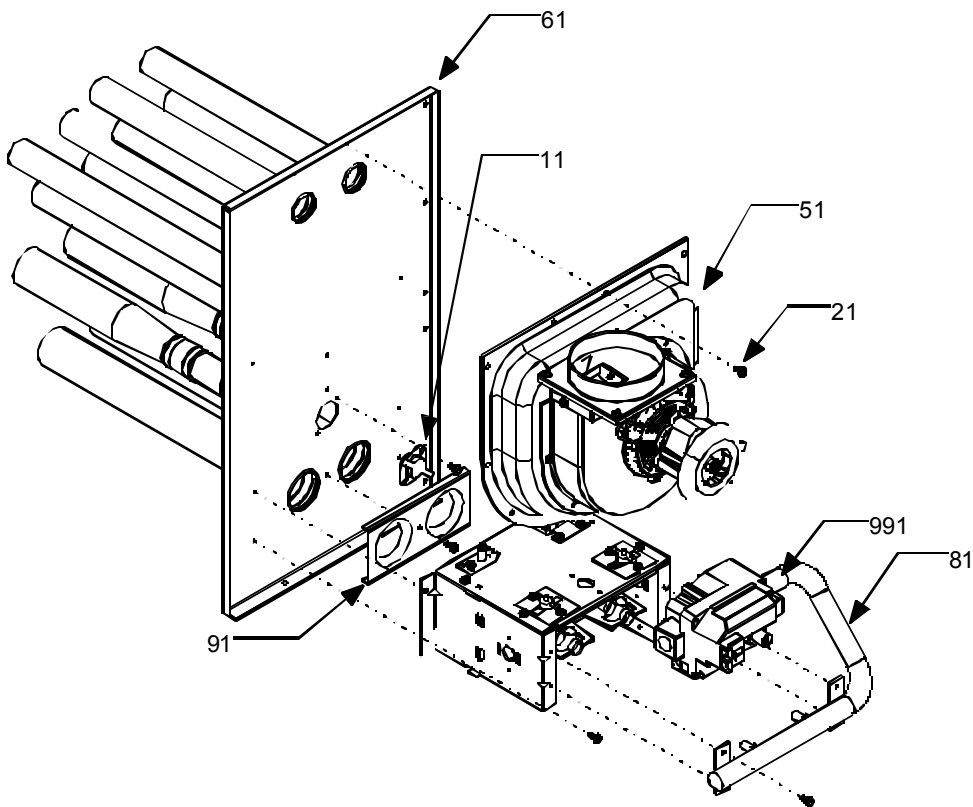
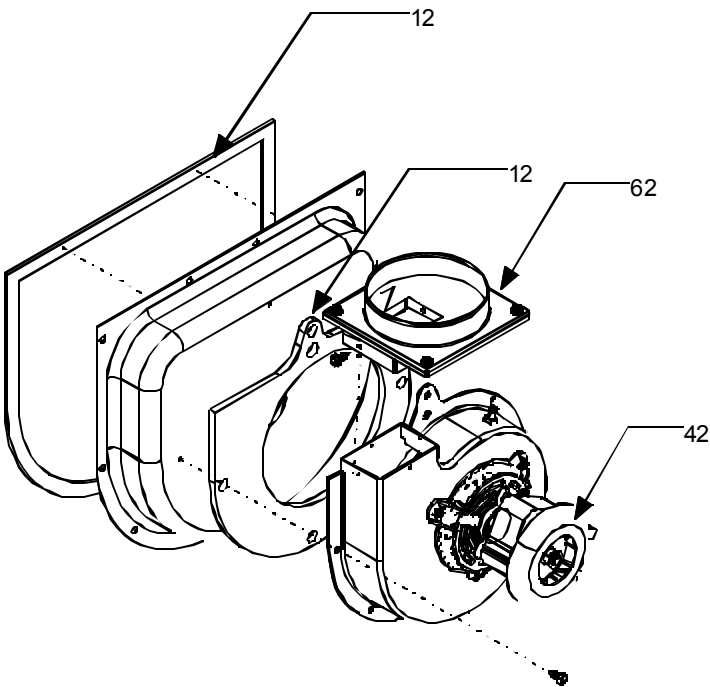


Image 1

Image 2



# Heat Exchanger Assy / Flue Collector Box

## Ref. Part

No: No: Description:

## Ref. Part

No: No: Description:

### Image 1:

11	B1370198	SWITCH, PRIMARY LIMIT, 150°F (M6, M10, M11, M12)
11	B1370187	SWITCH, PRIMARY LIMIT, 160°F (M3)
11	B1370188	SWITCH, PRIMARY LIMIT, 170°F (M4, M5, M7)
11	B1370189	SWITCH, PRIMARY LIMIT, 200°F (M8, M9)
11	B1370190	SWITCH, PRIMARY LIMIT, 210°F (M1, M2)
51	4010012S	FLUE COLL BX., 14" 1.50 DIA. (M1, M2)
51	4010013S	FLUE COLL BX., 14" 2.00 DIA. (M3)
51	4010014S	FLUE COLL BX., 17.5" 2.00 DIA., 3 CELL (M4, M5)
51	4010015S	FLUE COLL BX., 17.5" 2.00 DIA., 4 CELL (M6, M7)
51	4010016S	FLUE COLL BX., 21" 2.00 DIA. (M8, M9)
51	4010017S	FLUE COLL BX., 21" 2.25 DIA. (M10, M11)
51	4010018S	FLUE COLL BX., 24.5" 3.625 DIA. (M12)
61	4021300S	HEAT EXCHANGER SUB ASM., 2 CELL 14" (M1, M2)
61	4021307S	HEAT EXCHANGER SUB ASM., 3 CELL 14" (M3)
61	4021308S	HEAT EXCHANGER SUB ASM., 3 CELL 17.5" (M4, M5)
61	4021309S	HEAT EXCHANGER SUB ASM., 4 CELL 17.5" (M6, M7)
61	4021310S	HEAT EXCHANGER SUB ASM., 4 CELL 21" (M8, M9)
61	4021311S	HEAT EXCHANGER SUB ASM., 5 CELL 21" (M10, M11)
61	4021312S	HEAT EXCHANGER SUB ASM., 6 CELL 24" (M12)
81	B4026005	GAS MANIFOLD, 2 CELL (M1, M2)
81	B4026006	GAS MANIFOLD, 3 CELL (M3, M4, M5)
81	B4026007	GAS MANIFOLD, 4 CELL (M6, M7, M8, M9)
81	B4026008	GAS MANIFOLD, 5 CELL (M10, M11)
81	B4026009	GAS MANIFOLD, 6 CELL (M12)
91	4028000	ORIFICE PLATE, 2 CELL (M1, M2)
91	4028001	ORIFICE PLATE, 3 CELL (M3, M4, M5)
91	4028002	ORIFICE PLATE, 4 CELL (M6, M7, M8, M9)
91	4028003	ORIFICE PLATE, 5 CELL (M10, M11)
91	4028004	ORIFICE PLATE, 6 CELL (M12)
991	B1282614	GAS VALVE
NS	10624003	INSERT-MESH TUBES, 2 CELL (M2)
NS	10624003	INSERT-MESH TUBES, 3 CELL (M5)
NS	10624003	INSERT-MESH TUBES, 4 CELL (M9)
NS	10624003	INSERT-MESH TUBES, 5 CELL (M11)

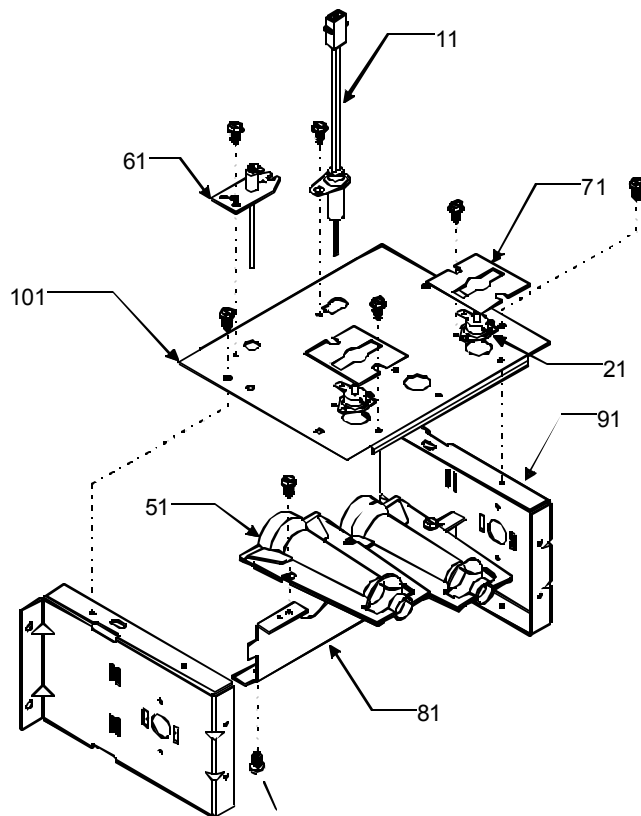
### Image 2:

12	B1392635	GASKET, VENT MOTOR, 21" (M8, M9, M10, M11)
12	B1392636	GASKET, VENT MOTOR, 24.5" (M12)
12	B1392633	GASKET, VENT MOTOR, 14" (M1, M2, M3)
12	B1392634	GASKET, VENT MOTOR, 17.5" (M4, M5, M6, M7)
42	B4059001S	VENT MOTOR 80%
62	4053501	CHIMNEY ASSEMBLY

### Expanded Model Nomenclature

M1 - GMS80453ANA  
M2 - GMS80453AXA  
M3 - GMS80703ANA  
M4 - GMS80704BNA  
M5 - GMS80704BXA  
M6 - GMS80903BNA  
M7 - GMS80904BNA  
M8 - GMS80905CNA  
M9 - GMS80905CXA  
M10 - GMS81155CNA  
M11 - GMS81155CXA  
M12 - GMS81405DNA

## Burner Box



# Burner Box

## Ref. Part

No: No:

Description:

## Ref. Part

No: No:

Description:

Image 1:

11	20165703	IGNITOR
21	B1370145	ROLLOUT, SWITCH 300°F W/O BRKT. (QTY 2)
51	B4022700	INSHOT BURNER, (QTY 2) (M1, M2)
51	B4022700	INSHOT BURNER, (QTY 3) (M3, M4, M5)
51	B4022700	INSHOT BURNER, (QTY 4) (M6, M7, M8, M9)
51	B4022700	INSHOT BURNER, (QTY 5) (M10, M11)
51	B4022700	INSHOT BURNER, (QTY 6) (M12)
61	B1172606	FLAME SENSOR
71	2509503	BRACKET FOR ROLLOUT SWITCH (QTY 2)
81	2513500	BURNER RACK 2 CELL (M1, M2)
81	2513501	BURNER RACK 3 CELL (M3, M4, M5)
81	2513502	BURNER RACK 4 CELL (M6, M7, M8, M9)
81	2513503	BURNER RACK 5 CELL (M10, M11)
81	2513504	BURNER RACK 6 CELL (M12)
91	2514000	SIDE PLATE BURNER (QTY 2)
101	4013010	TOP PLATE, BURNER 2 CELL (M1, M2)
101	4012011	TOP PLATE, BURNER 3 CELL (M3, M4, M5)
101	4013012	TOP PLATE, BURNER 4 CELL (M6, M7, M8, M9)
101	4013013	TOP PLATE, BURNER 5 CELL (M10, M11)
101	4013014	TOP PLATE, BURNER 6 CELL (M12)
NS	B4089343	GAS ORIFICE, #43 (QTY 3) (M3, M4, M5)
NS	B4089343	GAS ORIFICE, #43 (QTY 4) (M6, M7, M8, M9)
NS	B4089343	GAS ORIFICE, #43 (QTY 5) (M10, M11)
NS	B4089343	GAS ORIFICE, #43 (QTY 6) (M12)
NS	B4089343	GAS ORIFICE, #43 (QTY2) (M1, M2)

Expanded Model Nomenclature

M1 - GMS80453ANA  
M2 - GMS80453AXA  
M3 - GMS80703ANA  
M4 - GMS80704BNA  
M5 - GMS80704BXA  
M6 - GMS80903BNA  
M7 - GMS80904BNA  
M8 - GMS80905CNA  
M9 - GMS80905CXA  
M10 - GMS81155CNA  
M11 - GMS81155CXA  
M12 - GMS81405DNA