

# HVAC EQUIPMENT

## Source 1 Residential & Commercial Replacement Parts



### Spark Ignitors

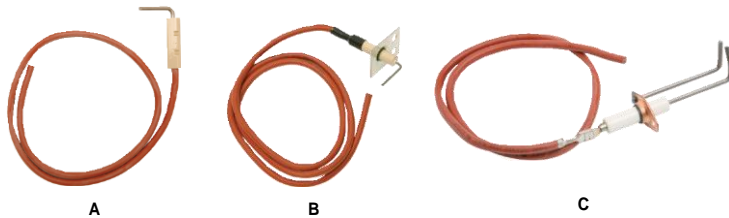


Fig.	Order #	Mfg. #	OEM/OEM Mfg. #
A	<b>L38-932</b>	S1-02526361700	White-Rodgers #07-60-687-S1
A	<b>L38-933</b>	S1-02529010000	Precision Speed #PSE-YK4
A	<b>L38-934</b>	S1-02530372000	Precision Speed #PSE-Y14

Fig.	Order #	Mfg. #	OEM/OEM Mfg. #
B	<b>L39-403</b>	S1-02538951000	Johnson Controls #Y58PF-3C
C	<b>L40-297</b>	S1-02535305000	Precision Speed Equipment PSE-Y33



### Suction Valve

- For use with Coleman & Evcon equipment



Order #	Mfg. #
<b>B16-654</b>	S1-02211572000



### Pilot Ignition Assemblies

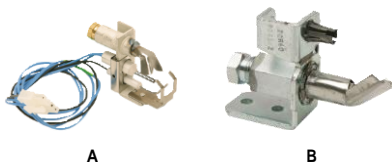


Fig.	Order #	Mfg. #	OEM/OEM Mfg. #
A	<b>L38-935</b>	S1-02532780000	Honeywell #O3450E1024
A	<b>L39-405</b>	S1-02530860000	Honeywell #Q3450E3004
B	<b>L39-406</b>	S1-9849-0161	Robertshaw #77203



### Hot Surface Ignitors

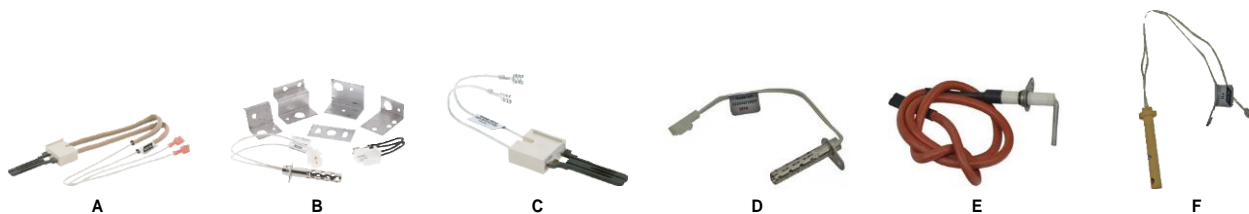


Fig.	Order #	Mfg. #	Description	OEM/OEM Mfg. #
A	<b>L38-325</b>	S1-32541021000	Hot Surface Ignitor	Norton Co. #MB458831201W
A	<b>L38-731</b>	S1-02532625000	Hot Surface Ignitor	Norton Co. #271N-MB478013
A	<b>L38-807</b>	S1-1474-051P	Hot Surface Ignitor	Norton Co. #MB478033
B	<b>L38-732</b>	S1-47320937001	Hot Surface Ignitor	York
C	<b>L39-409</b>	S1-02529043000	Hot Surface Ignitor	Norton Co. #271D-MB458830

Fig.	Order #	Mfg. #	Description	OEM/OEM Mfg. #
D	<b>L43-069</b>	S1-02533421001	Hot Surface Ignitor	Norton #601-1014
E	<b>L43-071</b>	S1-37331175000	Ignitor Kit	York
F	<b>L39-410</b>	S1-02529084700	Hot Surface Ignitor	Norton Co. #401T-MB458916