



www.Source1Parts.com

CM SERIES MULTI-POSITION COIL W/HORIZONTAL PAN ALUM FLEX COIL MODELS (STYLE A)

HVAC SERVICE PARTS

Supersedes: Nothing

035-24198-001 Rev. A (0115)

1 of 4

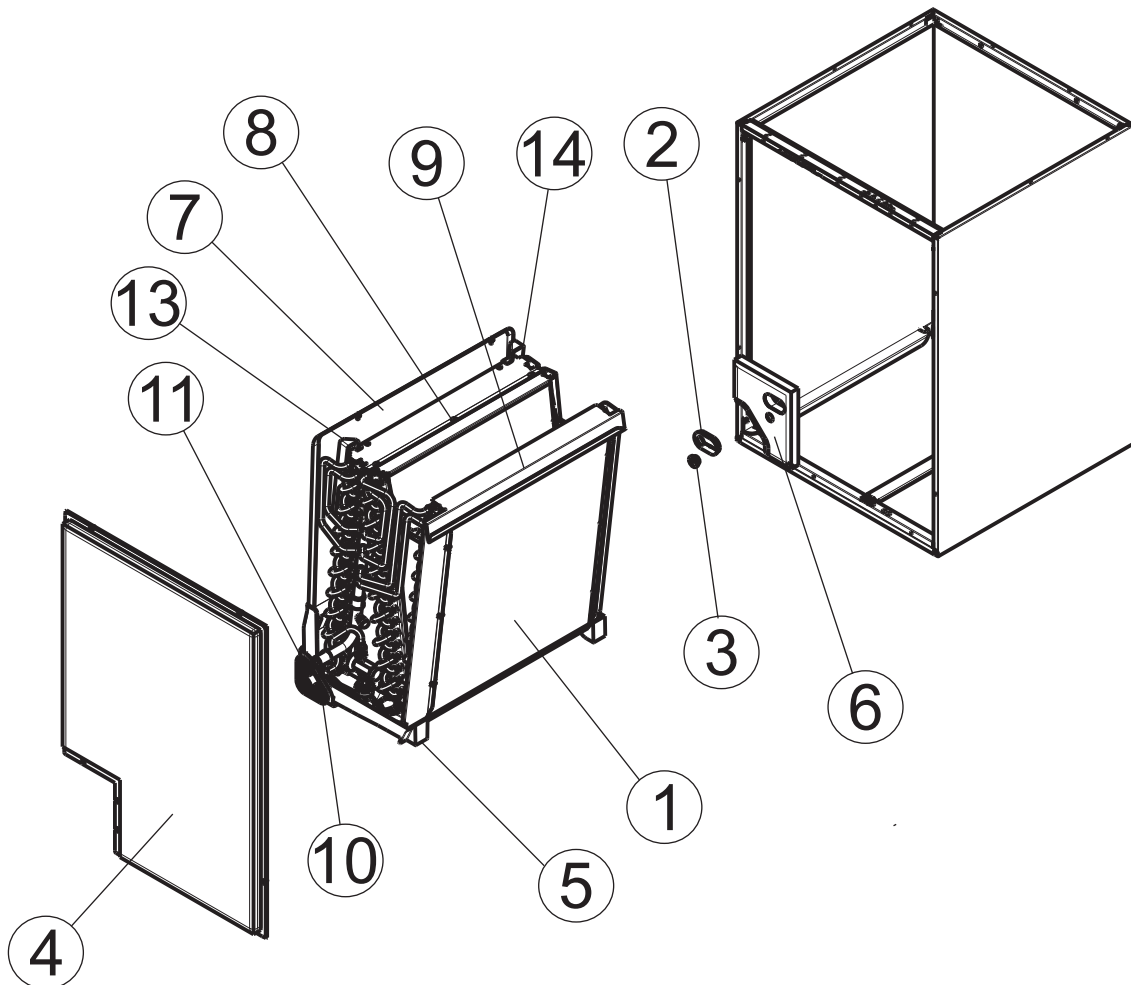


Figure 1 : MULT-POSITION COIL W/HORIZONTAL PAN - ALUM FLEX COIL

ITEM	DESCRIPTION	CM18AXA1A	CM18BXA1A	CM24AXA1A	CM24BXA1A	<
1	Coil w/Drain Pan	S1-37339405005	S1-37339405006	S1-37339405007	S1-37339405008	
2	Gasket, Oval	S1-02817078000	S1-02817078000	S1-02817077000	S1-02817077000	
3	Grommet, Liquid Line	S1-02813209000	S1-02813209000	S1-02813209000	S1-02813209000	
4	Assy, Lower Access Panel	S1-37339402001	S1-37339402004	S1-37339402001	S1-37339402004	
5	Pan, Drain	S1-02817090000	S1-02817091000	S1-02817090000	S1-02817091000	
6	Panel, Tubing Access	S1-37339403001	S1-37339403001	S1-37339403001	S1-37339403001	
7	Drain Pan, Horizontal	S1-37339404001	S1-37339404001	S1-37339404002	S1-37339404001	
8	Assy, Coil Baffle	S1-37339407002	S1-37339407003	S1-37339407002	S1-37339407003	
9	Shield, Blow-off, RH	S1-07339408001	S1-07339408001	S1-07339408001	S1-07339408001	
10	Plug, Drain Pan (2 Req'd)	S1-02812480000	S1-02812480000	S1-02812480000	S1-02812480000	
11	Gasket, Drain Pan	S1-02817104000	S1-02817104000	S1-02817104000	S1-02817104000	
12*	Assy, Liquid Line	S1-02322469000	S1-02322464000	S1-02322469000	S1-02322464000	
13	Channel, Condensate, Front	S1-02817102000	S1-02817102000	S1-02817102000	S1-02817102000	
14	Channel, Condensate, Rear	S1-02817103000	S1-02817103000	S1-02817103000	S1-02817103000	

NOTE: *Not Shown

New replacement parts shown in **bold** face type at the first printing of parts list dated 1/15

Major components and suggested stocking items are shown with shaded item number.

"<" Across from row indicates a change in that row.

--- Not applicable to specified model.

ITEM	DESCRIPTION	CM24CXA1A	CM30AXA1A	CM30BXA1A	CM30CXA1A	<
1	Coil w/Drain Pan	S1-37339405009	S1-37339405013	S1-37339405014	S1-37339405015	
2	Gasket, Oval	S1-02817077000	S1-02817077000	S1-02817077000	S1-02817077000	
3	Grommet, Liquid Line	S1-02813209000	S1-02813209000	S1-02813209000	S1-02813209000	
4	Assy, Lower Access Panel	S1-37339402007	S1-37339402002	S1-37339402005	S1-37339402008	
5	Pan, Drain	S1-02817092000	S1-02817090000	S1-02817091000	S1-02817092000	
6	Panel, Tubing Access	S1-37339403001	S1-37339403001	S1-37339403001	S1-37339403001	
7	Drain Pan, Horizontal	S1-37339404002	S1-37339404004	S1-37339404003	S1-37339404003	
8	Assy, Coil Baffle	S1-37339407003	S1-37339407001	S1-37339407002	S1-37339407003	
9	Shield, Blow-off, RH	S1-07339408001	S1-07339408001	S1-07339408001	S1-07339408001	
10	Plug, Drain Pan (2 Req'd)	S1-02812480000	S1-02812480000	S1-02812480000	S1-02812480000	
11	Gasket, Drain Pan	S1-02817104000	S1-02817104000	S1-02817104000	S1-02817104000	
12*	Assy, Liquid Line	S1-02322469000	S1-02322471000	S1-02322465000	S1-02322470000	
13	Channel, Condensate, Front	S1-02817102000	S1-02817102000	S1-02817102000	S1-02817102000	
14	Channel, Condensate, Rear	S1-02817103000	S1-02817103000	S1-02817103000	S1-02817103000	

ITEM	DESCRIPTION	CM30DXA1A	CM36AXA1A	CM36BXA1A	CM36CXA1A	<
1	Coil w/Drain Pan	S1-37339405016	S1-37339405017	S1-37339405018	S1-37339405019	
2	Gasket, Oval	S1-02817077000	S1-02817077000	S1-02817077000	S1-02817077000	
3	Grommet, Liquid Line	S1-02813209000	S1-02813209000	S1-02813209000	S1-02813209000	
4	Assy, Lower Access Panel	S1-37339402013	S1-37339402002	S1-37339402006	S1-37339402009	
5	Pan, Drain	S1-02817093000	S1-02817090000	S1-02817091000	S1-02817092000	
6	Panel, Tubing Access	S1-37339403001	S1-37339403001	S1-37339403001	S1-37339403001	
7	Drain Pan, Horizontal	S1-37339404003	S1-37339404005	S1-37339404005	S1-37339404011	
8	Assy, Coil Baffle	S1-37339407003	S1-37339407001	S1-37339407002	S1-37339407003	
9	Shield, Blow-off, RH	S1-07339408001	S1-07339408001	S1-07339408001	S1-07339408001	
10	Plug, Drain Pan (2 Req'd)	S1-02812480000	S1-02812480000	S1-02812480000	S1-02812480000	
11	Gasket, Drain Pan	S1-02817104000	S1-02817104000	S1-02817104000	S1-02817104000	
12*	Assy, Liquid Line	S1-02322463000	S1-02322471000	S1-02322465000	S1-02322470000	
13	Channel, Condensate, Front	S1-02817102000	S1-02817102000	S1-02817102000	S1-02817102000	
14	Channel, Condensate, Rear	S1-02817103000	S1-02817103000	S1-02817103000	S1-02817103000	

ITEM	DESCRIPTION	CM36DXA1A	CM42CXA1A	CM42DXA1A	CM48CXA1A	<
1	Coil w/Drain Pan	S1-37339405020	S1-37339405022	S1-37339405023	S1-37339405024	
2	Gasket, Oval	S1-02817077000	S1-02817077000	S1-02817077000	S1-02817077000	
3	Grommet, Liquid Line	S1-02813209000	S1-02813209000	S1-02813209000	S1-02813209000	
4	Assy, Lower Access Panel	S1-37339402013	S1-37339402010	S1-37339402014	S1-37339402011	
5	Pan, Drain	S1-02817093000	S1-02817092000	S1-02817093000	S1-02817092000	
6	Panel, Tubing Access	S1-37339403001	S1-37339403001	S1-37339403001	S1-37339403001	
7	Drain Pan, Horizontal	S1-37339404011	S1-37339404008	S1-37339404008	S1-37339404009	
8	Assy, Coil Baffle	S1-37339407003	S1-37339407003	S1-37339407003	S1-37339407002	
9	Shield, Blow-off, RH	S1-07339408001	S1-07339408001	S1-07339408001	S1-07339408001	
10	Plug, Drain Pan (2 Req'd)	S1-02812480000	S1-02812480000	S1-02812480000	S1-02812480000	
11	Gasket, Drain Pan	S1-02817104000	S1-02817104000	S1-02817104000	S1-02817104000	
12*	Assy, Liquid Line	S1-02322463000	S1-02322470000	S1-02322463000	S1-02322470000	
13	Channel, Condensate, Front	S1-02817102000	S1-02817102000	S1-02817102000	S1-02817102000	
14	Channel, Condensate, Rear	S1-02817103000	S1-02817103000	S1-02817103000	S1-02817103000	

NOTE: *Not ShownNew replacement parts shown in **bold** face type at the first printing of parts list dated 1/15

Major components and suggested stocking items are shown with shaded item number.

“<” Across from row indicates a change in that row.

--- Not applicable to specified model.



ITEM	DESCRIPTION	CM48DXA1A	CM60CXA1A	CM60DXA1A	
1	Coil w/Drain Pan	S1-37339405025	S1-37339405001	S1-37339405002	
2	Gasket, Oval	S1-02817077000	S1-02817077000	S1-02817077000	
3	Grommet, Liquid Line	S1-02813209000	S1-02813209000	S1-02813209000	
4	Assy, Lower Access Panel	S1-37339402015	S1-37339402011	S1-37339402015	
5	Pan, Drain	S1-02817093000	S1-02817092000	S1-02817093000	
6	Panel, Tubing Access	S1-37339403001	S1-37339403001	S1-37339403001	
7	Drain Pan, Horizontal	S1-37339404009	S1-37339404010	S1-37339404010	
8	Assy, Coil Baffle	S1-37339407003	S1-37339407002	S1-37339407002	
9	Shield, Blow-off, RH	S1-07339408001	S1-07339408001	S1-07339408001	
10	Plug, Drain Pan (2 Req'd)	S1-02812480000	S1-02812480000	S1-02812480000	
11	Gasket, Drain Pan	S1-02817104000	S1-02817104000	S1-02817104000	
12*	Assy, Liquid Line	S1-02322463000	S1-02322470000	S1-02322463000	
13	Channel, Condensate, Front	S1-02817102000	S1-02817102000	S1-02817102000	
14	Channel, Condensate, Rear	S1-02817103000	S1-02817103000	S1-02817103000	

<

NOTE: *Not ShownNew replacement parts shown in **bold** face type at the first printing of parts list dated 1/15

Major components and suggested stocking items are shown with shaded item number.

“<” Across from row indicates a change in that row.

--- Not applicable to specified model.



TO ORDER AUTHORIZED FACTORY REPLACEMENT PARTS - Contact your Source1 HVAC Parts Distributor or visit our website at **www.Source1Parts.com** for a Distributor and Dealer listing.

Subject to change without notice. Published in U.S.A.
Copyright © 2015 by Johnson Controls Inc. All rights reserved.

035-24198-001 Rev. A (0115)
Supersedes: Nothing

**York International Corp.
5005 York Drive
Norman, OK 73069**