



www.Source1Parts.com

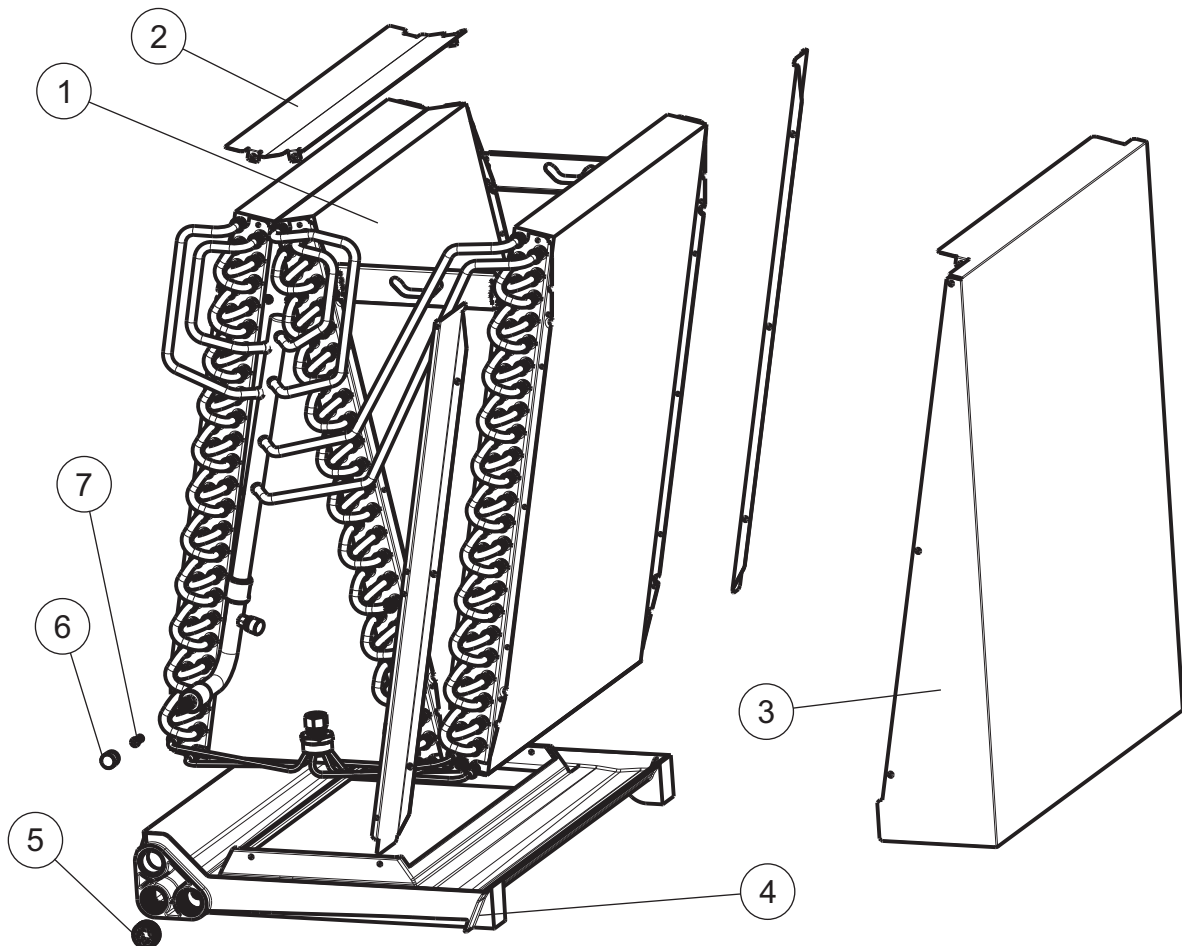
**CU SERIES  
UNCASED COIL  
ALUM FLEX COIL MODELS (STYLE A)**

**HVAC SERVICE PARTS**

Supersedes: Nothing

035-24542-001 Rev. A (0715)

1 of 2



**Figure 1 : FULL CASED COIL - FLEX COIL**

ITEM	DESCRIPTION	CU18AXA1A	CU18BXA1A	CU24AXA1A	CU24BXA1A	<
1	Coil w/Drain Pan	REPLACE ENTIRE UNIT				
2	Shield, Blow-off, LH	<b>S1-07339408003</b>	<b>S1-07339408003</b>	<b>S1-07339408003</b>	<b>S1-07339408003</b>	
3	Shroud	<b>S1-07339422001</b>	<b>S1-07339422002</b>	<b>S1-07339422003</b>	<b>S1-07339422004</b>	
4	Pan, Drain	<b>S1-02817096000</b>	<b>S1-02817097000</b>	<b>S1-02817096000</b>	<b>S1-02817097000</b>	
5	Plug, Drain Pan (1 Req'd)	S1-02812480000	S1-02812480000	S1-02812480000	S1-02812480000	
6	Cap (2 Req'd)	S1-02310745000	S1-02310745000	S1-02310745000	S1-02310745000	
7	Valve, Schrader (2 Req'd)	S1-02202475700	S1-02202475700	S1-02202475700	S1-02202475700	
8*	Washer, TXV	<b>S1-02131419000</b>	<b>S1-02131419000</b>	<b>S1-02131419000</b>	<b>S1-02131419000</b>	
9*	Line, Liquid	<b>S1-02322469000</b>	<b>S1-02322464000</b>	<b>S1-02322469000</b>	<b>S1-02322464000</b>	
10*	Grommet, Oval	<b>S1-02817077001</b>	<b>S1-02817077001</b>	<b>S1-02817078001</b>	<b>S1-02817078001</b>	
11*	Grommet, Round	S1-02813209000	S1-02813209000	S1-02813209000	S1-02813209000	

**NOTE:** \*Not Shown

New replacement parts shown in **bold** face type at the first printing of parts list dated 7/15

Major components and suggested stocking items are shown with shaded item number.

"<" Across from row indicates a change in that row.

--- Not applicable to specified model.

ITEM	DESCRIPTION	CU24CXA1A	CU30AXA1A	CU30BXA1A	CU30CXA1A	<
1	Coil w/Drain Pan	REPLACE ENTIRE UNIT				
2	Shield, Blow-off, LH	<b>S1-07339408003</b>	<b>S1-07339408003</b>	<b>S1-07339408003</b>	<b>S1-07339408003</b>	
3	Shroud	<b>S1-07339422005</b>	<b>S1-07339422006</b>	<b>S1-07339422007</b>	<b>S1-07339422008</b>	
4	Pan, Drain	<b>S1-02817098000</b>	<b>S1-02817096000</b>	<b>S1-02817097000</b>	<b>S1-02817098000</b>	
5	Plug, Drain Pan (1 Req'd)	S1-02812480000	S1-02812480000	S1-02812480000	S1-02812480000	
6	Cap (2 Req'd)	S1-02310745000	S1-02310745000	S1-02310745000	S1-02310745000	
7	Valve, Schrader (2 Req'd)	S1-02202475700	S1-02202475700	S1-02202475700	S1-02202475700	
8*	Washer, TXV	<b>S1-02131419000</b>	<b>S1-02131419000</b>	<b>S1-02131419000</b>	<b>S1-02131419000</b>	
9*	Line, Liquid	<b>S1-02322470000</b>	<b>S1-02322471000</b>	<b>S1-02322465000</b>	<b>S1-02322470000</b>	
10*	Grommet, Oval	<b>S1-02817078001</b>	<b>S1-02817078001</b>	<b>S1-02817078001</b>	<b>S1-02817078001</b>	
11*	Grommet, Round	S1-02813209000	S1-02813209000	S1-02813209000	S1-02813209000	

ITEM	DESCRIPTION	CU30DXA1A	CU36BXA1A	CU36CXA1A	CU36DXA1A	<
1	Coil w/Drain Pan	REPLACE ENTIRE UNIT				
2	Shield, Blow-off, LH	<b>S1-07339408003</b>	<b>S1-07339408003</b>	<b>S1-07339408003</b>	<b>S1-07339408003</b>	
3	Shroud	<b>S1-07339422009</b>	<b>S1-07339422010</b>	<b>S1-07339422011</b>	<b>S1-07339422012</b>	
4	Pan, Drain	<b>S1-02817099000</b>	<b>S1-02817097000</b>	<b>S1-02817098000</b>	<b>S1-02817099000</b>	
5	Plug, Drain Pan (1 Req'd)	S1-02812480000	S1-02812480000	S1-02812480000	S1-02812480000	
6	Cap (2 Req'd)	S1-02310745000	S1-02310745000	S1-02310745000	S1-02310745000	
7	Valve, Schrader (2 Req'd)	S1-02202475700	S1-02202475700	S1-02202475700	S1-02202475700	
8*	Washer, TXV	<b>S1-02131419000</b>	<b>S1-02131419000</b>	<b>S1-02131419000</b>	<b>S1-02131419000</b>	
9*	Line, Liquid	<b>S1-02322463000</b>	<b>S1-02322465000</b>	<b>S1-02322470000</b>	<b>S1-02322463000</b>	
10*	Grommet, Oval	<b>S1-02817078001</b>	<b>S1-02817078001</b>	<b>S1-02817078001</b>	<b>S1-02817078001</b>	
11*	Grommet, Round	S1-02813209000	S1-02813209000	S1-02813209000	S1-02813209000	

ITEM	DESCRIPTION	CU42CXA1A	CU42DXA1A	CU48CXA1A	CU48DXA1A	<
1	Coil w/Drain Pan	REPLACE ENTIRE UNIT				
2	Shield, Blow-off, LH	<b>S1-07339408003</b>	<b>S1-07339408003</b>	<b>S1-07339408003</b>	<b>S1-07339408003</b>	
3	Shroud	<b>S1-07339422013</b>	<b>S1-07339422014</b>	<b>S1-07339422015</b>	<b>S1-07339422016</b>	
4	Pan, Drain	<b>S1-02817098000</b>	<b>S1-02817099000</b>	<b>S1-02817098000</b>	<b>S1-02817099000</b>	
5	Plug, Drain Pan (1 Req'd)	S1-02812480000	S1-02812480000	S1-02812480000	S1-02812480000	
6	Cap (2 Req'd)	S1-02310745000	S1-02310745000	S1-02310745000	S1-02310745000	
7	Valve, Schrader (2 Req'd)	S1-02202475700	S1-02202475700	S1-02202475700	S1-02202475700	
8*	Washer, TXV	<b>S1-02131419000</b>	<b>S1-02131419000</b>	<b>S1-02131419000</b>	<b>S1-02131419000</b>	
9*	Line, Liquid	<b>S1-02322470000</b>	<b>S1-02322463000</b>	<b>S1-02322470000</b>	<b>S1-02322463000</b>	
10*	Grommet, Oval	<b>S1-02817078001</b>	<b>S1-02817078001</b>	<b>S1-02817078001</b>	<b>S1-02817078001</b>	
11*	Grommet, Round	S1-02813209000	S1-02813209000	S1-02813209000	S1-02813209000	

ITEM	DESCRIPTION	CU60CXA1A	CU60DXA1A	<
1	Coil w/Drain Pan	REPLACE ENTIRE UNIT		
2	Shield, Blow-off, LH	<b>S1-07339408003</b>	<b>S1-07339408003</b>	
3	Shroud	<b>S1-07339422017</b>	<b>S1-07339422018</b>	
4	Pan, Drain	<b>S1-02817098000</b>	<b>S1-02817099000</b>	
5	Plug, Drain Pan (1 Req'd)	S1-02812480000	S1-02812480000	
6	Cap (2 Req'd)	S1-02310745000	S1-02310745000	
7	Valve, Schrader (2 Req'd)	S1-02202475700	S1-02202475700	
8*	Washer, TXV	<b>S1-02131419000</b>	<b>S1-02131419000</b>	
9*	Line, Liquid	<b>S1-02322470000</b>	<b>S1-02322463000</b>	
10*	Grommet, Oval	<b>S1-02817078001</b>	<b>S1-02817078001</b>	
11*	Grommet, Round	S1-02813209000	S1-02813209000	

**NOTE:** \*Not ShownNew replacement parts shown in **bold** face type at the first printing of parts list dated 7/15.

Major components and suggested stocking items are shown with shaded item number.

"&lt;" Across from row indicates a change in that row.

--- Not applicable to specified model.

**TO ORDER AUTHORIZED FACTORY REPLACEMENT PARTS** - Contact your Source1 HVAC Parts Distributor or visit our website at **www.Source1Parts.com** for a Distributor and Dealer listing.

Subject to change without notice. Published in U.S.A.

Copyright © 2015 by Johnson Controls Inc. All rights reserved.

035-24542-001 Rev. A (0715)

Supersedes: Nothing

**York International Corp.**  
**5005 York Drive**  
**Norman, OK 73069**