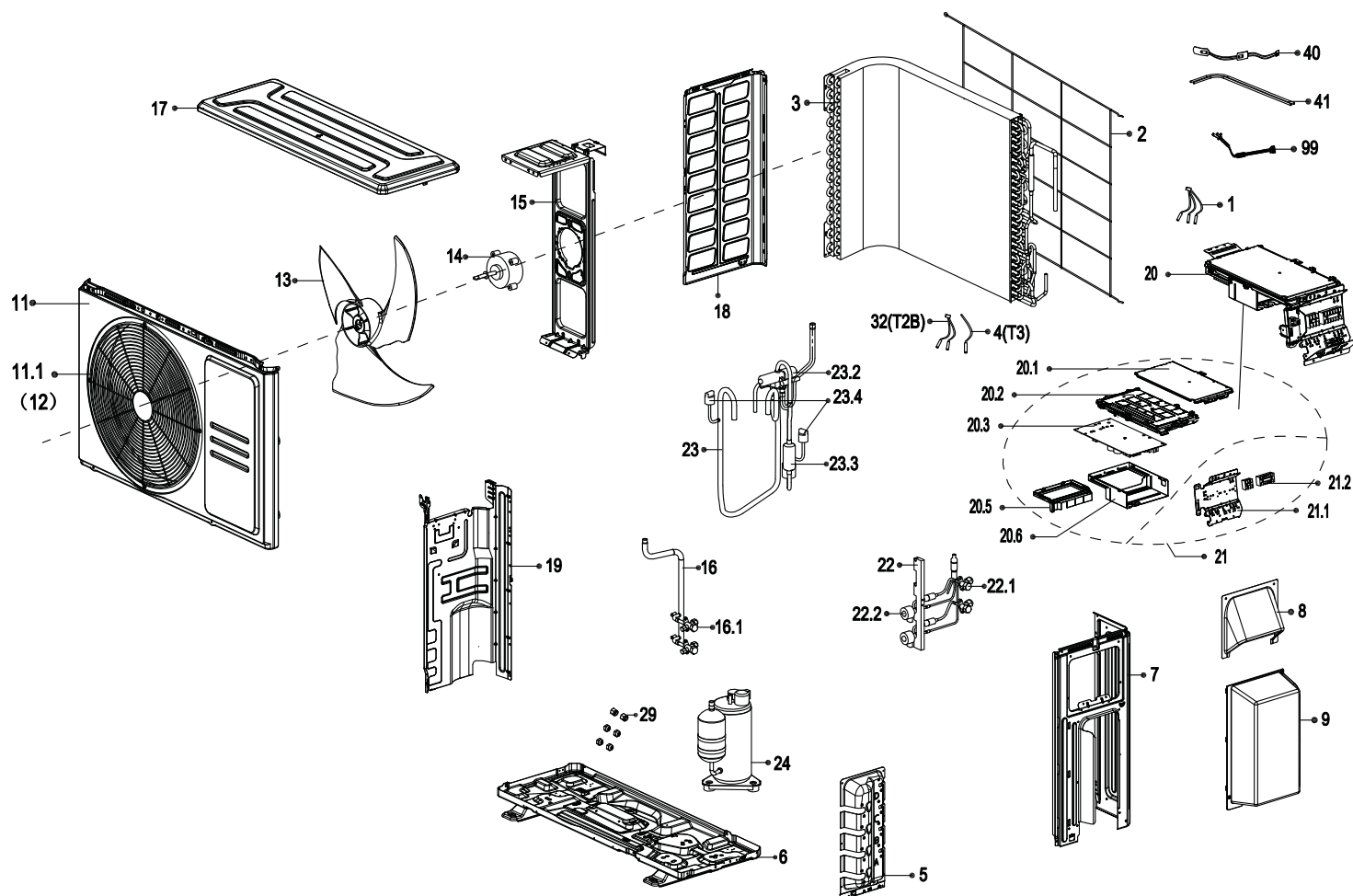


Bosch Climate 5000 Series Multi Zone Outdoor Unit

BMS500-AAM018-1CSXRC

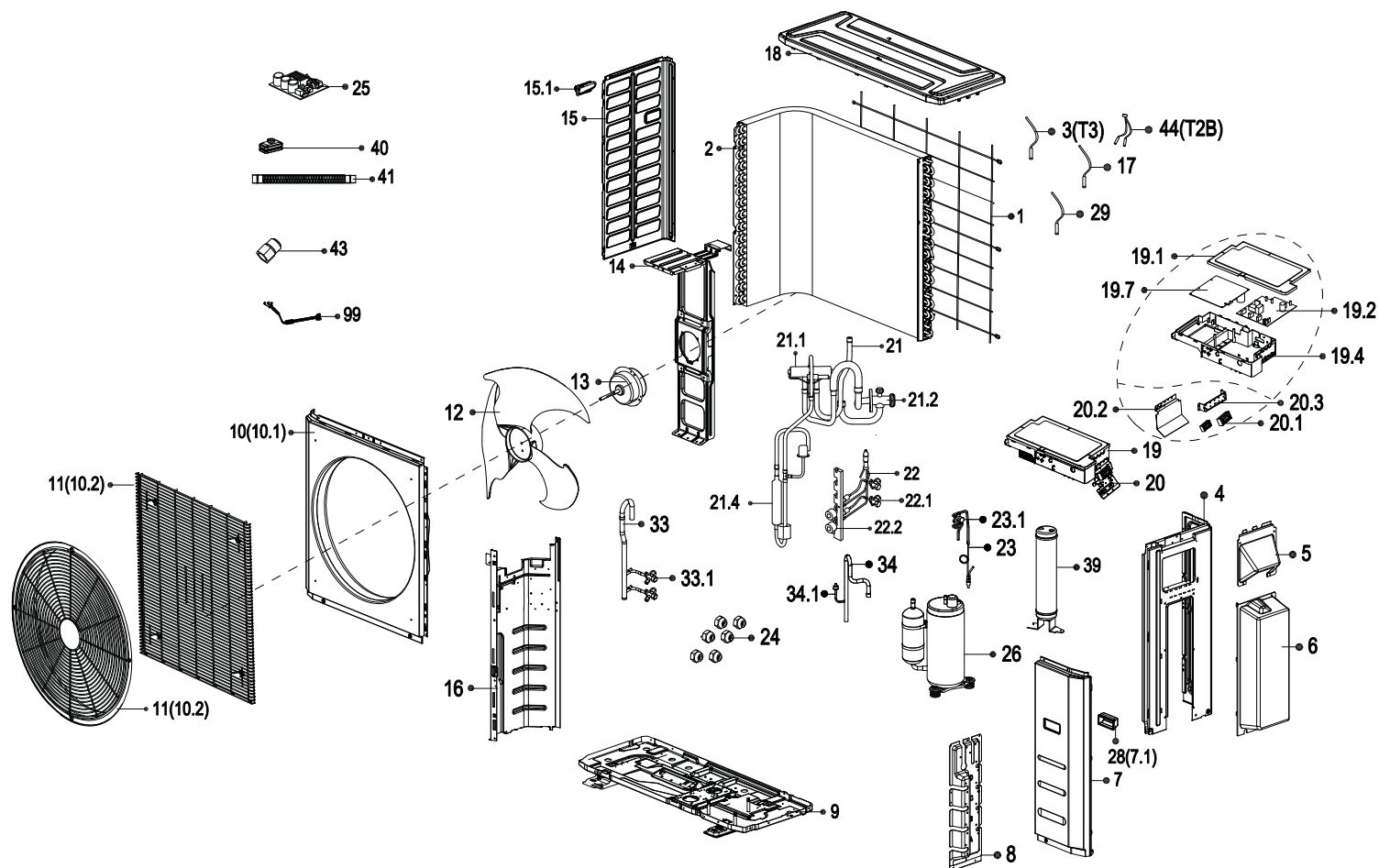


BOSCH

Pos.	Description	Qty	BMS500-AAM018-1CSXRC	Recommended Stock	Remarks
1	Combination sensor	1.0	8733956534	✓	
2	Rear net	1.0	8733956445		
3	Condenser assembly	1.0	8733956438	✓	
5	Valve plate	1.0	8733956535		
6	Chassis assembly	1.0	8733956536		
7	Right clapboard assembly	1.0	8733956537		
8	Big Handle Assembly	1.0	8733945579		
9	Water collector	1.0	8733956538		
11	Front panel	1.0	8733956433		
11.1	Air outlet grille	1.0	8733956434		
13	Axial flow fan	1.0	8733956435	✓	
14	Brushless DC Motor	1.0	8733956436	✓	
15	Supporter of fan motor	1.0	8733956437		
16	Gas valve assembly	1.0	8733956539	✓	
16.1	Gas valve	2.0	7738005574		
17	Top cover assembly	1.0	8733956440		
18	Left supporter	1.0	8733956439		
19	Partition board assembly	1.0	8733956540		
20	Electronic control box subassembly	1.0	8733956541		
20.1	Cover of electronic control box	1.0	8733956542		
20.2	Electronic installing box	1.0	8733956543		
20.3	Main control board subassembly	1.0	8733956544	✓	
20.5	Support of electronic control box	1.0	8733956545		
20.6	Electronic installing box subassembly	1.0	8733956546		
21	Terminal board subassembly	1.0	8733956547	✓	
21.1	Terminal board	1.0	8733956548		
21.2	Terminal	1.0	7738005688	✓	
21.2	Wire joint	1.0	8733954009	✓	
22	Liquid valve assembly	1.0	8733956549	✓	
22.1	Liquid valve	2.0	7738005578		
22.2	Electronic expansion valve	2.0	8733956550	✓	
23	4-way valve assembly	1.0	8733956551	✓	
23.2	4-way valve	1.0	7738005692	✓	
23.3	Muffler subassembly	1.0	8733956552		
23.4	Pressure switch	1.0	8733956553	✓	
23.4	Pressure switch	1.0	8733956514	✓	
24	DC Inverter rotary compressor	1.0	8733956554	✓	
29	Copper nut	2.0	8733953644		
29	Copper nut	2.0	8733953636		
29	Copper nut	2.0	8733953586		
32	Pipe Temperature Sensor	1.0	8733945539	✓	
40	Crankcase electric heater	1.0	8733956456		
41	tube type electric heater	1.0	8733956457		
99	Compressor wire subassembly	1.0	8733956399		
BMS500-AAM018-1CSXRC					

Bosch Climate 5000 Series Multi Zone Outdoor Unit

BMS500-AAM018-1CSXHC



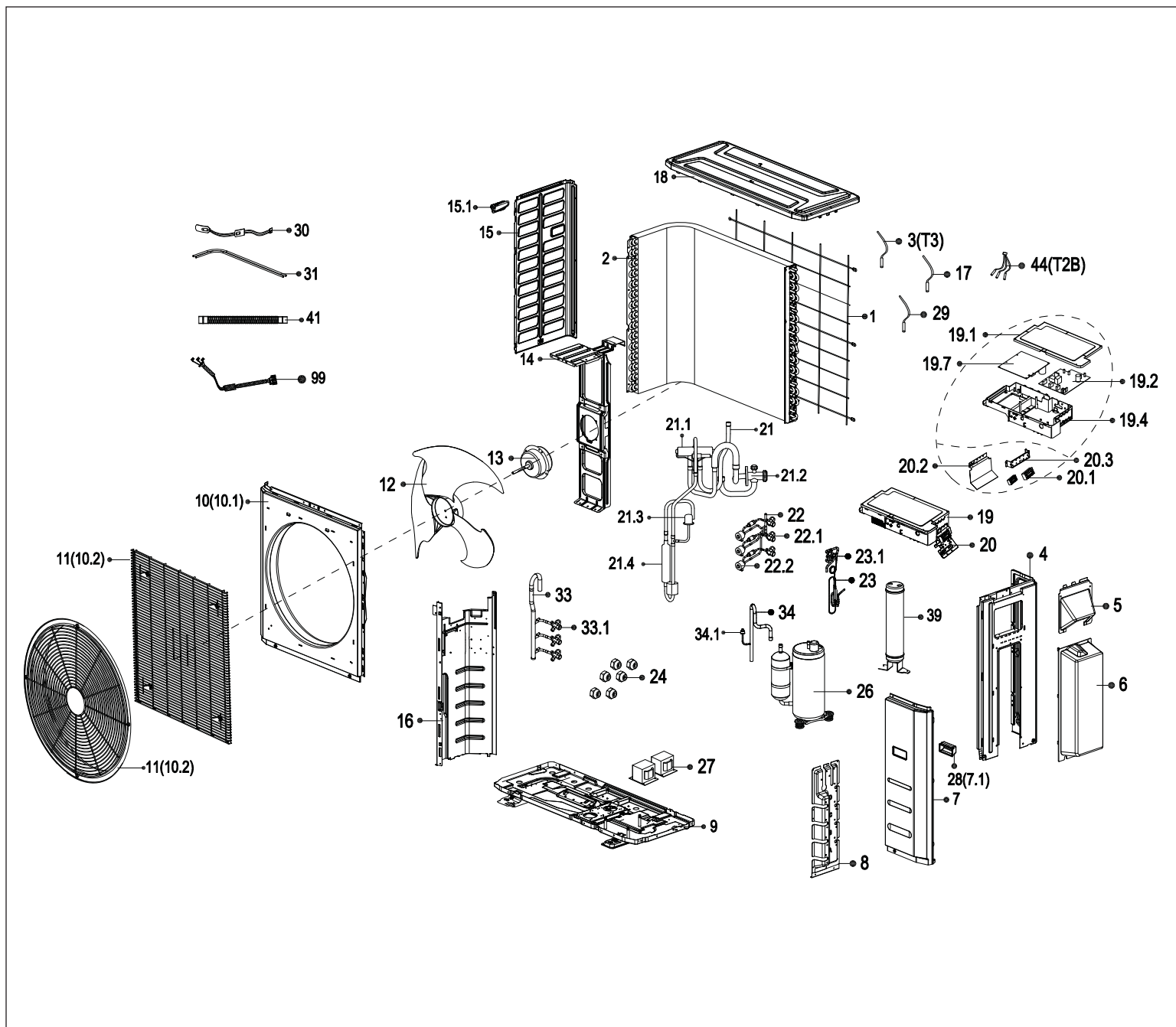
BOSCH

Pos.	Description	Qty	BMS500-AAM018-1CSXHC	Recommended Stock	Remarks
1	Rear net	1.0	7738005696		
2	Condenser assembly	1.0	8733956369	✓	
3	Pipe Temperature Sensor	1.0	8733956370	✓	
4	Rear right clapboard assembly	1.0	8733953865		
5	Big handle assembly	1.0	8733953866		
6	Water collector	1.0	8733945555		
7	Front right clapboard assembly	1.0	7738005673		
7.1	handle	1.0	7738005674		
8	Valve plate	1.0	8733945558		
9	Chassis assembly	1.0	8733945567		
10	Front panel	1.0	7738005676		
10.1	Front panel	1.0	8733956371		
11	Air outlet grille	1.0	8733956372		
12	Axial flow fan	1.0	7738005678	✓	
13	Brushless DC Motor	1.0	7738005679	✓	
14	Supporter subassembly of fan motor	1.0	8733956373		
15	Left side plate assembly of cabinet	1.0	7738005666		
15.1	Small handle	1.0	7738005667		
16	Partition board assembly	1.0	8733945572		
17	Room Temperature Sensor	1.0	8733953835	✓	
18	Top cover assembly	1.0	7738005682		
19	Electronic control box subassembly	1.0	8733956374	✓	
19.1	Cover of electronic control box	1.0	8733945546		
19.2	Main control board subassembly	1.0	8733956375	✓	
19.4	Electronic installing box	1.0	8733945557		
19.7	Inverter module subassembly	1.0	8733956376	✓	
20	Terminal board subassembly	1.0	8733953899	✓	
20.1	Terminal	1.0	8733945641	✓	
20.2	Terminal board	1.0	8733945578		
21	4-way Valve Assembly	1.0	8733956377	✓	
21.1	4-way valve	1.0	7738005692	✓	
21.2	Gas valve	1.0	8733945606		
21.3	Pressure switch	1.0	8733955614	✓	
21.4	Muffler subassembly	1.0	8733956378		
22	Liquid valve Assembly	1.0	8733953900	✓	
22.1	Liquid valve	2.0	7738005578		
22.2	Electronic expansion valve subassembly	2.0	8733945608	✓	
23	Liquid valve assembly	1.0	8733953877	✓	
23.1	Liquid valve	1.0	8733945607		
24	Copper nut	2.0	8733953644		
24	Copper nut	2.0	8733953636		
24	Copper nut	2.0	8733953586		
26	DC Inverter rotary compressor	1.0	8733956379	✓	
27	Reactor	1.0	7738005698		
29	Discharge Temperature Sensor	1.0	8733953878		
30	Electric heating tube	1.0	8733956380		
31	Crankcase electric heater	1.0	8733956381		
33	Gas valve assembly	1.0	8733953901	✓	
33.1	Gas valve	2.0	7738005574		
34	Suction pipe assembly	1.0	8733956382		
34.1	Pressure switch	1.0	8733955613	✓	
39	Accumulator cylinder	1.0	8733945616		
41	Drain pipe	1.0	8733947976		
44	Pipe Temperature Sensor	1.0	8733945539	✓	
99	Compressor wire subassembly	1.0	7738005661		

BMS500-AAM018-1CSXHC

Bosch Climate 5000 Series Multi Zone Outdoor Unit

BMS500-AAM027-1CSXRC | BMS500-AAM027-1CSXHC

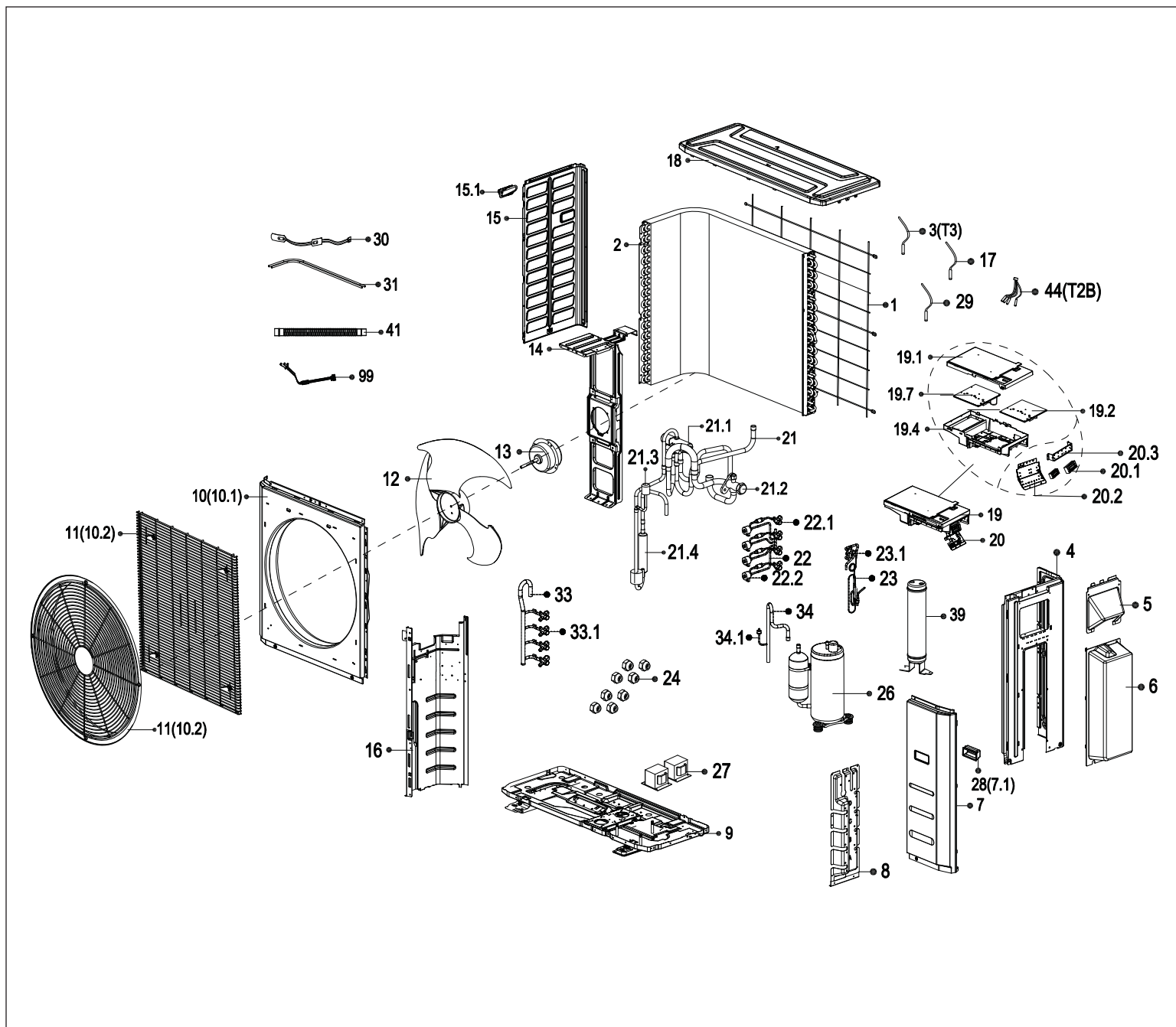


BOSCH

Pos.	Description	Qty	BMS500-AAM027-1CSXHC	BMS500-AAM027-1CSXRC	Recommended Stock	Remarks
1	Rear net	1.0	7738005696	7738005696		
2	Condenser assembly	1.0	8733956557	8733956369	✓	
3	Pipe Temperature Sensor	1.0	8733956370	8733956370	✓	
4	Rear right clapboard assembly	1.0	8733953865	8733953865		
5	Big handle assembly	1.0	8733953866	8733953866		
6	Water collector	1.0	8733945555	8733945555		
7	Front right clapboard assembly	1.0	7738005673	7738005673		
7.1	handle	1.0	7738005674	7738005674		
8	Valve plate	1.0	8733945558	8733945558		
9	Chassis assembly	1.0	8733945567	8733945567		
10	Front panel	1.0	7738005676	7738005676		
10.1	Front panel	1.0	8733956371	8733956371		
11	Air outlet grille	1.0	8733956372	8733956372		
12	Axial flow fan	1.0	7738005678	7738005678	✓	
13	Brushless DC Motor	1.0	7738005679	7738005679	✓	
14	Supporter subassembly of fan motor	1.0	8733956558	8733956373		
15	Left side plate assembly of cabinet	1.0	7738005666	7738005666		
15.1	Small handle	1.0	7738005667	7738005667		
16	Partition board assembly	1.0	8733945572	8733945572		
17	Room Temperature Sensor	1.0	8733953835	8733953835	✓	
18	Top cover assembly	1.0	7738005682	7738005682		
19	Electronic control box subassembly	1.0	8733956580	8733956555	✓	
19.1	Cover of electronic control box	1.0	8733945546	8733945546		
19.2	Main control board subassembly	1.0	8733956581	8733956556	✓	
19.4	Electronic installing box	1.0	8733945557	8733945557		
19.7	Inverter module subassembly	1.0	8733956561	8733956376	✓	
20	Terminal board subassembly	1.0	8733945631	8733956377	✓	
20.1	Terminal	2.0	8733945642	8733945642	✓	
20.2	Terminal board	1.0	8733945578	8733945578		
20.3	Terminal board	1.0	8733945577	8733945577		
21	4-way Valve Assembly	1.0	8733956562	8733956377	✓	
21.1	4-way valve	1.0	7738005692	7738005692	✓	
21.2	Gas valve	1.0	8733945606	8733945606		
21.3	Pressure switch	1.0	8733955614	8733955614	✓	
21.4	Muffler subassembly	1.0	8733956563	8733956378		
22	Liquid valve assembly	1.0	8733945599	8733945599	✓	
22.1	Liquid valve	3.0	7738005578	7738005578		
22.2	Electronic expansion valve subassembly	3.0	8733945608	8733945608	✓	
23	Liquid valve assembly	1.0	8733953868	8733953877	✓	
23.1	Liquid valve	1.0	8733945607	8733945607		
24	Copper nut	3.0	8733953644	8733953636		
24	Copper nut	2.0	8733953586	8733953586		
24	Copper nut	3.0	8733953636	8733953644		
26	DC Inverter Rotary Compressor	1.0	8733956503	8733956379	✓	
27	Reactor	1.0	7738005698	7738005698		
29	Discharge Temperature Sensor	1.0	8733953878	8733953878	✓	
30	Electric heating tube	1.0	8733956380	8733956380		
31	Crankcase electric heater	1.0	8733956381	8733956381		
33	Gas valve assembly	1.0	8733953907	8733945601	✓	
33.1	Gas valve	1.0	7738005606	7738005574		
33.1	Gas valve	2.0	7738005574	N/A		
34	Suction pipe assembly	1.0	8733945589	8733956382		
34.1	Pressure switch	1.0	8733955613	8733955613	✓	
39	Accumulator cylinder	1.0	8733945616	8733945616		
41	Drain pipe	1.0	8733947976	8733947976		
44	Pipe Temperature Sensor	1.0	8733945535	8733945535	✓	
99	Compressor wire subassembly	1.0	7738005661	7738005661		
BMS500-AAM027-1CSXRC BMS500-AAM027-1CSXHC						

Bosch Climate 5000 Series Multi Zone Outdoor Unit

BMS500-AAM036-1CSXRC

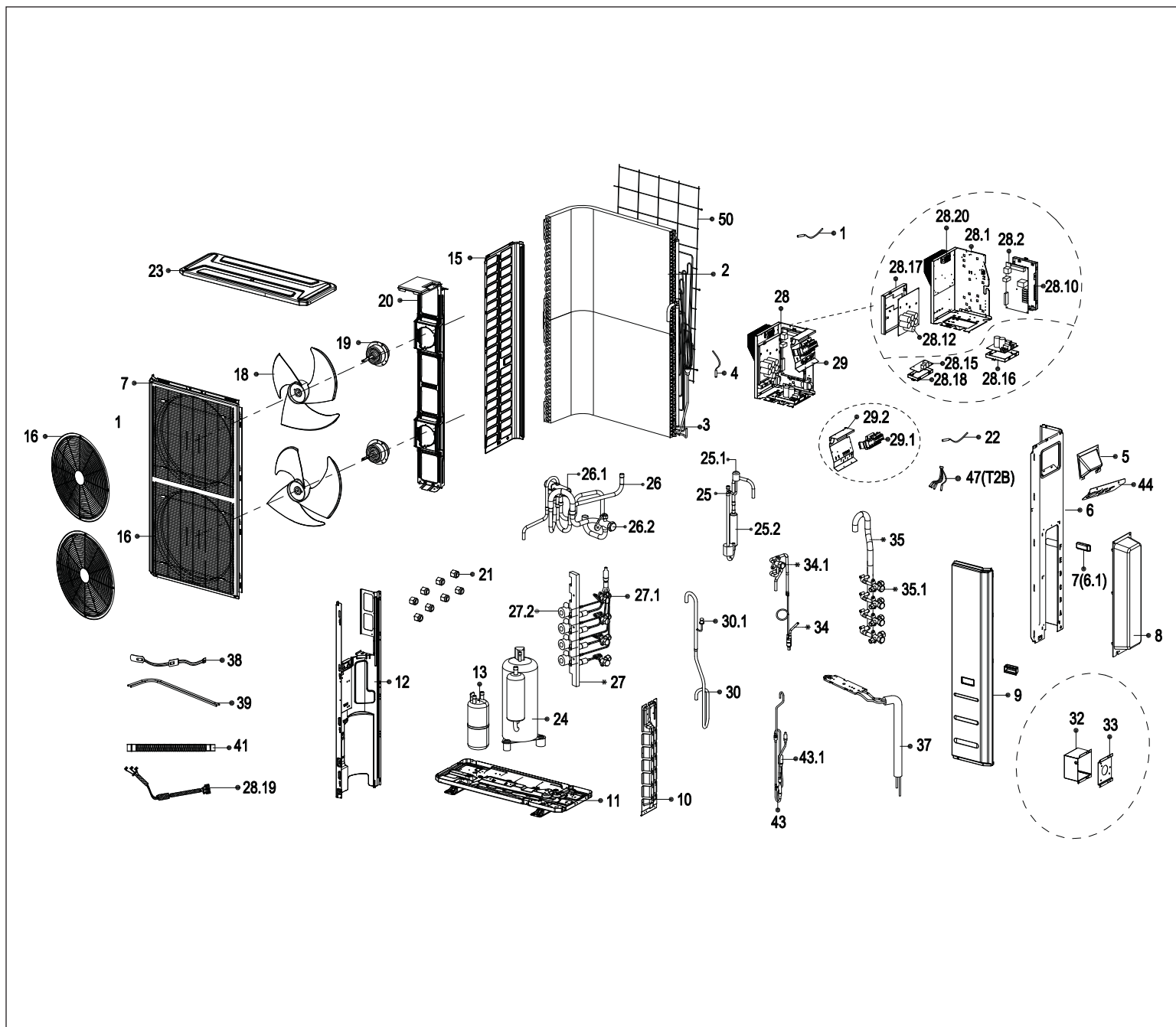


BOSCH

Pos.	Description	Qty	BMS500-AAM036-1CSXRC	Recommended Stock	Remarks
1	Rear net	1.0	7738005696		
2	Condenser assembly	1.0	8733956557	✓	
3	Pipe Temperature Sensor	1.0	8733956370	✓	
4	Rear right clapboard assembly	1.0	8733953865		
5	Big handle assembly	1.0	8733953866		
6	Water collector	1.0	8733945555		
7	Front right clapboard assembly	1.0	7738005673		
7.1	handle	1.0	7738005674		
8	Valve plate	1.0	8733945558		
9	Chassis assembly	1.0	8733945567		
10	Front panel	1.0	7738005676		
10.1	Front panel	1.0	8733956371		
11	Air outlet grille	1.0	8733956372		
12	Axial flow fan	1.0	7738005678	✓	
13	Brushless DC Motor	1.0	7738005679	✓	
14	Supporter subassembly of fan motor	1.0	8733956558		
15	Left side plate assembly of cabinet	1.0	7738005666		
15.1	Small handle	1.0	7738005667		
16	Partition board assembly	1.0	8733945572		
17	Room Temperature Sensor	1.0	8733953835		
18	Top cover assembly	1.0	7738005682		
19	Electronic control box subassembly	1.0	8733956559	✓	
19.1	Cover of electronic control box	1.0	8733945546		
19.2	Main control board subassembly	1.0	8733956560	✓	
19.4	Electronic installing box	1.0	8733945557		
19.7	Inverter module subassembly	1.0	8733956561	✓	
20	Terminal board subassembly	1.0	8733945635	✓	
20.1	Terminal	1.0	8733945641	✓	
20.1	Terminal	1.0	8733945642	✓	
20.2	Terminal board	1.0	8733945578		
20.3	Terminal board	1.0	8733945577		
21	4-way Valve Assembly	1.0	8733956562	✓	
21.1	4-way valve	1.0	7738005692	✓	
21.2	Gas valve	1.0	8733945606		
21.3	Pressure switch	1.0	8733955614	✓	
21.4	Muffler subassembly	1.0	8733956563		
22	Liquid valve assembly	1.0	8733945597	✓	
22.1	Liquid valve	4.0	7738005578		
22.2	Electronic expansion valve subassembly	4.0	8733945608	✓	
23	Liquid valve assembly	1.0	8733953868	✓	
23.1	Liquid valve	1.0	8733945607		
24	Copper nut	4.0	8733953644		
24	Copper nut	3.0	8733953586		
24	Copper nut	4.0	8733953636		
26	DC Inverter Rotary Compressor	1.0	8733956503	✓	
27	Reactor	1.0	7738005698		
29	Discharge Temperature Sensor	1.0	8733953878		
30	Electric heating tube	1.0	8733956380		
31	Crankcase electric heater	1.0	8733956381		
33	Gas valve assembly	1.0	8733945598	✓	
33.1	Gas valve	3.0	7738005574		
33.1	Gas valve	1.0	7738005606		
34	Suction pipe assembly	1.0	8733945589		
34.1	Pressure switch	1.0	8733955613	✓	
39	Accumulator cylinder	1.0	8733945616		
41	Drain pipe	1.0	8733947976		
44	Pipe Temperature Sensor	1.0	8733945534	✓	
99	Compressor wire subassembly	1.0	7738005661		
BMS500-AAM036-1CSXRC					

Bosch Climate 5000 Series Multi Zone Outdoor Unit

BMS500-AAM036-1CSXHC



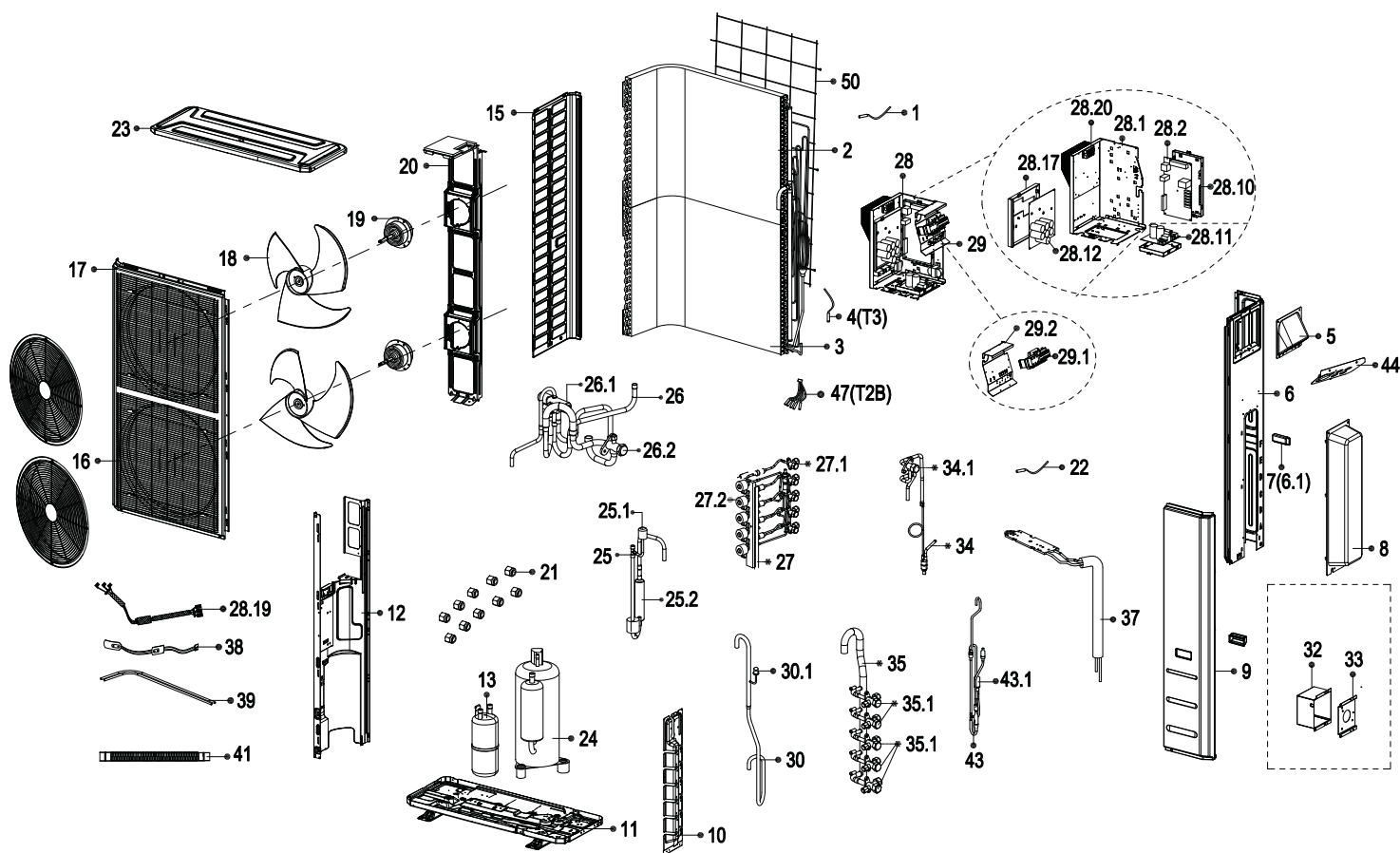
BOSCH

Pos.	Description	Qty	BMS500-AAM036-1CSXHC	Recommended Stock	Remarks
1	Room Temperature Sensor	1.0	8733953835		
2	Condenser assembly	1.0	8733956564	✓	
3	Condenser assembly	1.0	8733956565	✓	
4	Pipe Temperature Sensor	1.0	8733956510	✓	
5	Big Handle Assembly	1.0	8733945579		
6	Rear right clapboard assembly	1.0	8733953891		
6.1	handle	1.0	7738005674		
8	Water collector	1.0	8733945548		
9	Front right clapboard assembly	1.0	8733945562		
10	Valve plate	1.0	8733945566		
11	Chassis assembly	1.0	8733945565		
12	Partition board assembly	1.0	8733945559		
13	Liquid-storage tank	1.0	8733945615		
15	Left side plate assembly of cabinet	1.0	8733945574		
16	Air outlet grille	2.0	8733956372		
16	Trademark	1.0	8733956883		
17	Front panel	1.0	8733945569		
18	Axial flow fan	2.0	8733945545	✓	
19	Brushless DC Motor	2.0	8733956512	✓	
20	Supporter subassembly of fan motor	1.0	8733945563		
21	Copper nut	4.0	8733953636		
21	Copper nut	2.0	8733953644		
21	Copper nut	2.0	8733953586		
22	Discharge Temperature Sensor	1.0	8733953878	✓	
23	Top cover assembly	1.0	8733945573		
24	DC Inverter Rotary Compressor	1.0	8733945533	✓	
25	Discharge pipe assembly	1.0	8733956566		
25.1	Pressure switch	1.0	8733955614	✓	
25.2	Muffler	1.0	8733956567	✓	
26	4-way valve assembly	1.0	8733956568	✓	
26.1	4-way valve	1.0	8733945611	✓	
26.2	Gas valve	1.0	8733945606		
27	Liquid valve Assembly	1.0	8733956582	✓	
27.1	Liquid valve	4.0	7738005578		
27.2	Electronic expansion valve body	4.0	7738005694	✓	
28	Electronic control box subassembly	1.0	8733956583	✓	
28.1	Installation plate of electric parts subassembly	1.0	8733956519		
28.2	Outdoor main control board	1.0	8733956584	✓	
28.10	Metal box	1.0	8733945549		
28.12	Inverter module subassembly	1.0	8733956572	✓	
28.17	Electronic installing box	1.0	8733956522		
28.19	Compressor wire subassembly	1.0	8733953895		
29	Terminal board subassembly	1.0	8733956585	✓	
29.1	Wire joint	1.0	8733956524		
29.1	Terminal	2.0	8733945642	✓	
29.2	Terminal instalation subassembly	1.0	8733956574		
30	Suction pipe assembly	1.0	8733945588		
30.1	Pressure switch	1.0	8733956513	✓	
34	Liquid valve assembly	1.0	8733956575	✓	
34.1	Liquid valve	1.0	8733945607		
BMS500-AAM036-1CSXHC					

[illegible]

Bosch Climate 5000 Series Multi Zone Outdoor Unit

BMS500-AAM048-1CSXRC



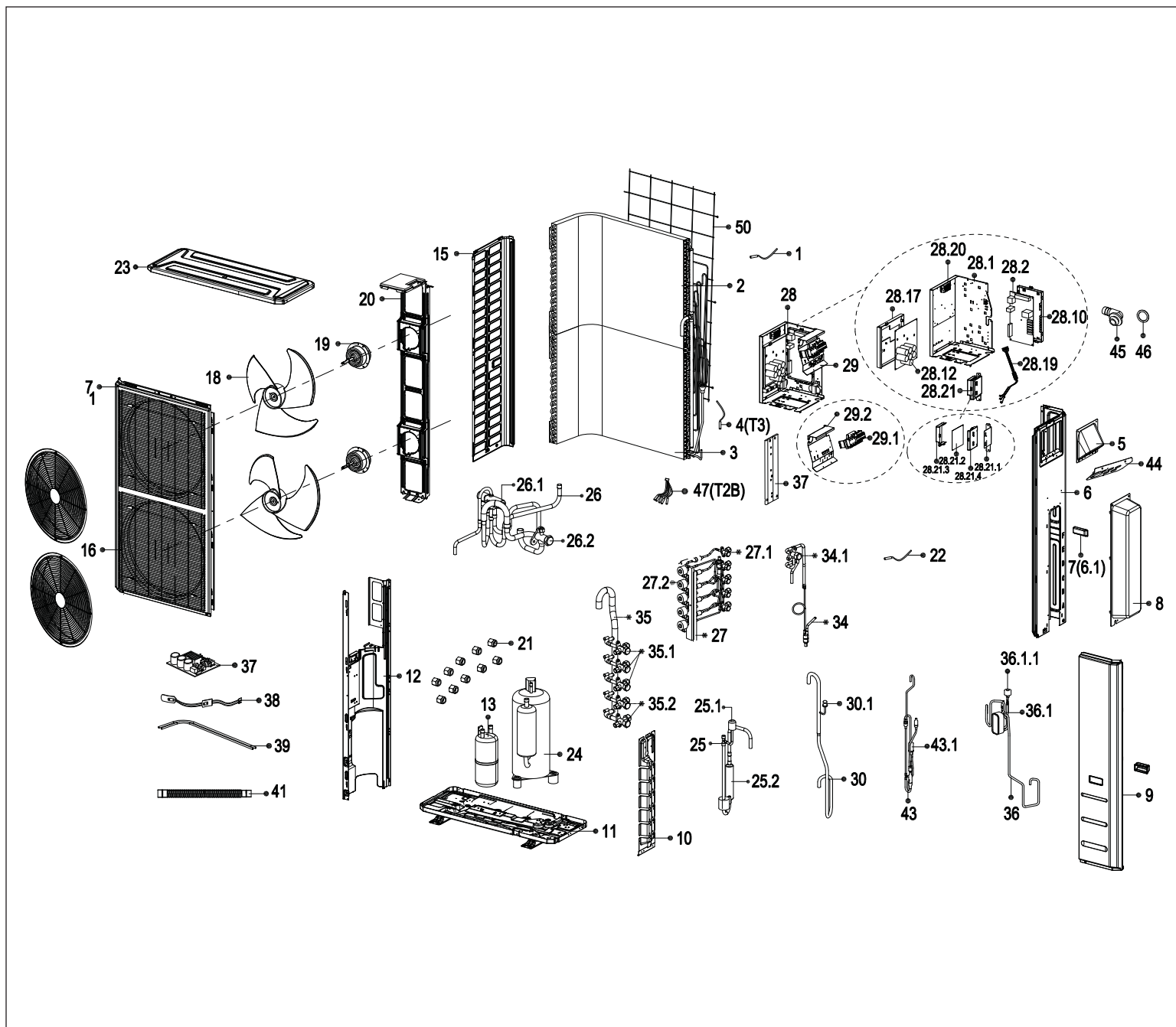
BOSCH

Pos.	Description	Qty	BMS500-AAM048-1CSXRC	Recommended Stock	Remarks
1	Room Temperature Sensor	1.0	8733953835		
2	Condenser assembly	1.0	8733956564	✓	
3	Condenser assembly	1.0	8733956565	✓	
4	Pipe Temperature Sensor	1.0	8733956510	✓	
5	Big Handle Assembly	1.0	8733945579		
6	Rear right clapboard assembly	1.0	8733953891		
6.1	handle	1.0	7738005674		
8	Water collector	1.0	8733945548		
9	Front right clapboard assembly	1.0	8733945562		
10	Valve plate	1.0	8733945566		
11	Chassis assembly	1.0	8733945565		
12	Partition board assembly	1.0	8733945559		
13	Liquid-storage tank	1.0	8733945615		
15	Left side plate assembly of cabinet	1.0	8733945574		
16	Air outlet grille	2.0	8733956882		
16	Trademark	1.0	8733956883		
17	Front panel	1.0	8733945569		
18	Axial flow fan	2.0	8733945545	✓	
19	Brushless DC Motor	2.0	8733956512	✓	
20	Supporter subassembly of fan motor	1.0	8733945563		
21	Copper nut	3.0	8733953586		
21	Copper nut	2.0	8733953644		
21	Copper nut	5.0	8733953636		
22	Discharge Temperature Sensor	1.0	8733953878	✓	
23	Top cover assembly	1.0	8733945573		
24	DC Inverter Rotary Compressor	1.0	8733945533	✓	
25	Discharge pipe assembly	1.0	8733956566		
25.1	Pressure switch	1.0	8733955614	✓	
25.2	Muffler	1.0	8733956567	✓	
26	4-way valve assembly	1.0	8733956568	✓	
26.1	4-way valve	1.0	8733945611	✓	
26.2	Gas valve	1.0	8733945606		
27	Liquid valve Assembly	1.0	8733956569	✓	
27.1	Liquid valve	5.0	7738005578		
27.2	Electronic expansion valve body	5.0	7738005694	✓	
28	Electronic control box subassembly	1.0	8733956570	✓	
28.1	Installation plate of electric parts subassembly	1.0	8733956519		
28.2	Outdoor main control board subassembly	1.0	8733956571	✓	
28.10	Electronic installing box	1.0	8733945549		
28.12	Inverter module subassembly	1.0	8733956572	✓	
28.17	Electronic installing box	1.0	8733956522		
28.19	Compressor wire subassembly	1.0	8733953895		
29	Terminal board subassembly	1.0	8733956573	✓	
29.1	Wire joint	1.0	8733956524		
29.1	Terminal	1.0	8733945641	✓	
29.1	Terminal	1.0	8733945642	✓	
29.2	Terminal instalation subassembly	1.0	8733956574		
30	Suction pipe assembly	1.0	8733945588		
30.1	Pressure switch	1.0	8733955613	✓	
34	Liquid valve assembly	1.0	8733956575	✓	
34.1	Liquid valve	1.0	8733945607		
BMS500-AAM048-1CSXRC					

[illegible]

Bosch Climate 5000 Series Multi Zone Outdoor Unit

BMS500-AAM048-1CSXHC



BOSCH

Pos.	Description	Qty	BMS500-AAM048-1CSXHC	Recommended Stock	Remarks
1	Room Temperature Sensor	1.0	8733953835		
2	Condenser Assembly	1.0	8733953888	✓	
3	Condenser Assembly	1.0	8733953889	✓	
4	Pipe Temperature Sensor	1.0	8733956510	✓	
5	Big Handle Assembly	1.0	8733945579		
6	Rear right clapboard assembly	1.0	8733953891		
6.1	handle	1.0	7738005674		
8	Water collector	1.0	8733945548		
9	Front right clapboard assembly	1.0	8733945562		
10	Valve plate	1.0	8733945566		
11	Chassis assembly	1.0	8733945565		
12	Partition board assembly	1.0	8733945559		
13	Liquid-storage tank	1.0	8733945615		
15	Left side plate assembly of cabinet	1.0	8733945574		
16	Air outlet grille	2.0	8733956372		
16	Trademark	1.0	8733956883		
17	Front panel	1.0	8733945569		
18	Axial flow fan	2.0	8733945545	✓	
19	Brushless DC Motor	2.0	8733956512	✓	
20	Supporter subassembly of fan motor	1.0	8733945563		
21	Copper nut	3.0	8733953586		
21	Copper nut	5.0	8733953636		
21	Copper nut	5.0	8733953644		
22	Discharge Temperature Sensor	1.0	8733953878	✓	
23	Top cover assembly	1.0	8733945573		
24	DC Inverter rotary compressor	1.0	8733956586	✓	
25	Discharge pipe assembly	1.0	8733956566		
25.1	Pressure switch	1.0	8733955614	✓	
25.2	Muffler	1.0	8733956567	✓	
26	4-way valve assembly	1.0	8733956568	✓	
26.1	4-way valve	1.0	8733945611	✓	
26.2	Gas valve	1.0	8733945606		
27	Liquid valve Assembly	1.0	8733956587	✓	
27.1	Liquid valve	5.0	7738005578		
27.2	Electronic expansion valve subassembly	5.0	8733945608	✓	
28	Electronic control box subassembly	1.0	8733956588	✓	
28.1	Installation plate of electric parts subassembly	1.0	8733956519		
28.2	Outdoor main control board subassembly	1.0	8733956589	✓	
28.10	Electronic installing box	1.0	8733945549		
28.12	Inverter module subassembly	1.0	8733956590	✓	
28.17	Electronic installing box	1.0	8733956522		
28.19	Compressor wire subassembly	1.0	8733956591		
28.21	Middle connection board subassembly	1.0	8733956592	✓	
28.21.1	Cover of electronic control box	1.0	8733956593		
28.21.2	Inverter control board subassembly	1.0	8733956594	✓	
28.21.3	Support of electronic control box	1.0	8733956595		
28.21.4	Electronic installing box	1.0	8733956596		
29	Terminal board subassembly	1.0	8733956597	✓	
29.1	Terminal	1.0	8733945642	✓	
29.1	Wire joint	1.0	8733956524		
29.1	Terminal	1.0	8733945641	✓	
29.2	Terminal instalation subassembly	1.0	8733956574		
BMS500-AAM048-1CSXHC					

BMS500-AAM048-1CSXHC