

Inverter Driven Heat Pump

36,000 BTU Circular Flow Cassette

Job Name _____
 Location _____
 Engineer _____
 Submitted To _____
 Submitted By _____
 Reference _____

Date _____
 Approval _____
 Construction _____
 Unit No _____
 Drawing No _____

PRODUCT FEATURES

360° Circular flow distributes air more evenly around the room
 Adjustable louver swing
 Adjustable airflow
 Optional human sensor detects room occupancy for energy savings
 7mm High density heat exchanger
 Seamless airflow louver
 Grille available in White (UTG-GCGF) or Black (UTG-LCGVCB), sold separately



MODEL NUMBERS

Indoor Unit	AUU36RGLX
Outdoor Unit	AOU36RGLX
System	36RGLXC

EFFICIENCIES

SEER			18
SEER 2			20.8
EER			10
EER 2			12.8
HSPF			9.7
HSPF2 (IV) / HSPF2 (V)			10.1/7.5
COP	kW/kW		3.86
COP	Btu/hW		13.2
COP2	kW/kW		3.7
COP2	Btu/hW		12.6

OUTDOOR TEMPERATURE OPERATION RANGE

Cooling	*F(*C)	-5 to 115 (-21 to 46)
Heating		-5 to 75 (-21 to 24)

CAPACITIES

Cooling	Rated	Btu/h	36000
	Min.-Max.		9,600-39,000
Heating	Rated	Btu/h	36000
	Min.-Max.		9,200-48,000

LINESET REQUIREMENTS

Connection Method	Flare		
Liquid	in (mm)		Ø3/8 (9.52)
Gas			Ø5/8 (15.88)
Pre-charge length	ft (m)		66 (20)
Minimum Length			16 (5)
Max. length			164 (50)
Max. height difference			98 (30)

INDOOR DIMENSIONS & WEIGHT

Net (H x W x D)	in (mm)	11-5/16 x 33-1/16 x 33-1/16 (288 x 840 x 840)
Gross (H x W x D)		13-3/8 x 37-13/16 x 37-3/8 (340 x 960 x 950)
Net Weight	lb (kg)	57 (26)
Gross Weight		66 (30)

OUTDOOR DIMENSIONS & WEIGHT

Net (H x W x D)	in (mm)	32-11/16 x 35-7/16 x 13 (830 x 900 x 330)
Gross (H x W x D)		39-3/8 x 41-5/16 x 17-1/2 (1,000 x 1,050 x 445)
Net Weight	lb (kg)	134 (61)
Gross Weight		152 (69)

Warranty Information



7 Year Compressor, 5 Year Parts out-of-the-box Warranty



10 Year Compressor, 10 Year Parts Warranty when registered within 60 days of installation in a residence



12 Year Compressor, 12 Year Parts Warranty when registered within 60 days of installation in a residence, and installed by a Fujitsu Elite contractor

ACCESSORIES

UTY-RNRUZ*	Wired Remote Controller
UTY-RSRY	Simple Remote Controller
UTY-RHRY	Simple Remote Controller
UTY-LBTUC	IR Receiver Kit with Wireless Remote Controller
UTG-GCGF	Cassette Grille
UTG-LCGVCB	Cassette Grille
UTY-SHZXC	Human Sensor Kit
UTY-XWZXZG	External Connect Kit
UTR-YDZK	Air Outlet Shutter Plate
UTG-AKXA-W	Wide Panel
UTG-BKXA-W	Panel Spacer
UTZ-VXRA	Fresh Air Intake Kit
UTZ-KXRA	Insulation for High Humidity
UTY-XCSX	External Input and Output PCB
UTY-TFSXZ2	WLAN Adapter
UTY-VMSX	Modbus Converter
UTY-TTRXZ1	Thermostat Converter
UTY-VTGX	Network Converter

Due to continuous product improvements, specifications are subject to change without notice. Please log in to the Fujitsu Portal for the most up-to-date documentation
<https://connect.fujitsugeneral.com>

Effective Date: 12/16/2022

Fujitsu General America, Inc. • 340 Changebridge Rd, Pine Brook, NJ 07058 • Toll Free: (888) 888-3424 • www.fujitsugeneral.com

Inverter Driven Heat Pump

36,000 BTU Circular Flow Cassette

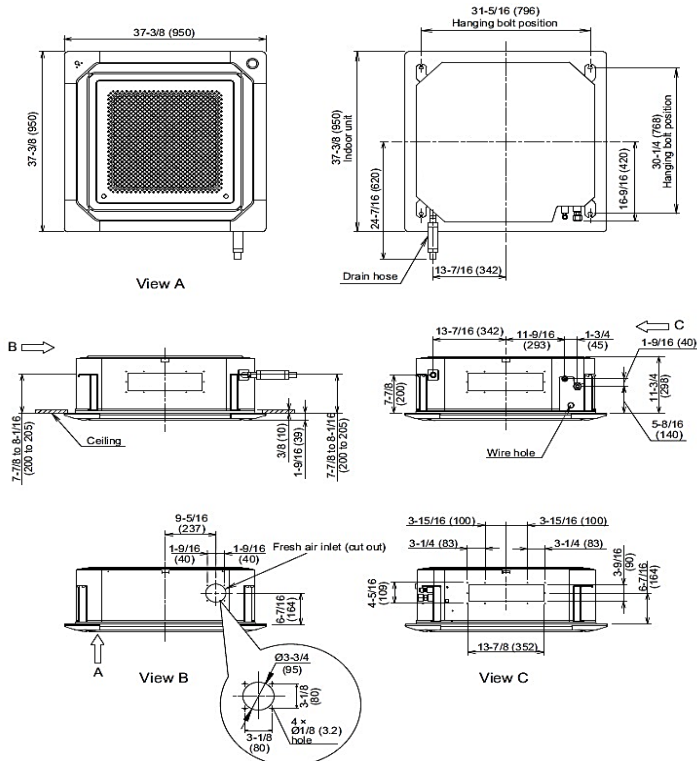
FAN DATA				
Indoor Unit Airflow rate	Cooling	HIGH	CFM (m3/h)	1,118 (1,900)
		MED		936 (1,590)
		LOW		836 (1,420)
		QUIET		695 (1,180)
	Heating	HIGH		1,118 (1,900)
		MED		936 (1,590)
		LOW		836 (1,420)
		QUIET		695 (1,180)
Outdoor Unit Airflow rate	Cooling		2,237 (3,800)	
	Heating		2,237 (3,800)	
SOUND PRESSURE				
Indoor Unit	Cooling	HIGH	dB (A)	44
		MED		41
		LOW		38
		QUIET		34
	Heating	HIGH		44
		MED		41
		LOW		38
		QUIET		34
Outdoor Unit	Cooling		54	
	Heating		56	
REFRIGERANT				
Type				R410A
Charge	lb oz	4 lb 10 oz		
	g	2100		
Oil Type				POE (RB68)

ELECTRICAL SPECIFICATIONS				
Voltage/Frequency/Phase		208/230 V~ 60 Hz		
Available Voltage Range		187–253 V		
Current	Cooling	Rated	A	16.1
	Heating	Rated		12.2
Maximum Operating Current		Cooling		17.6
		Heating		19.1
Starting current				16.1
MCA				24.6
Maximum Circuit Breaker			30	
Input Power	Cooling	Rated	kW	3.6
		Min.–Max.		0.60–3.94
	Heating	Rated		2.73
		Min.–Max.		0.52–4.19
Power Factor	Cooling		%	97
	Heating			97
OTHER				
Moisture Removal		pints/h (L/h)	7.8 (3.7)	
Energy Star			No	
Drain hose	Material		PVC	
	Tip diameter	in (mm)	Ø1/2 (Ø13.0) (I.D.), Ø5/8 to Ø11/16 (Ø16.0 to Ø16.7) (O.D.)	
Operation Range	Cooling	°F (°C)	64 to 90 (18 to 32)	
		%RH	80 or less	
	Heating	°F (°C)	60 to 86 (16 to 30)	

DIMENSIONS:

Units: In. (mm)

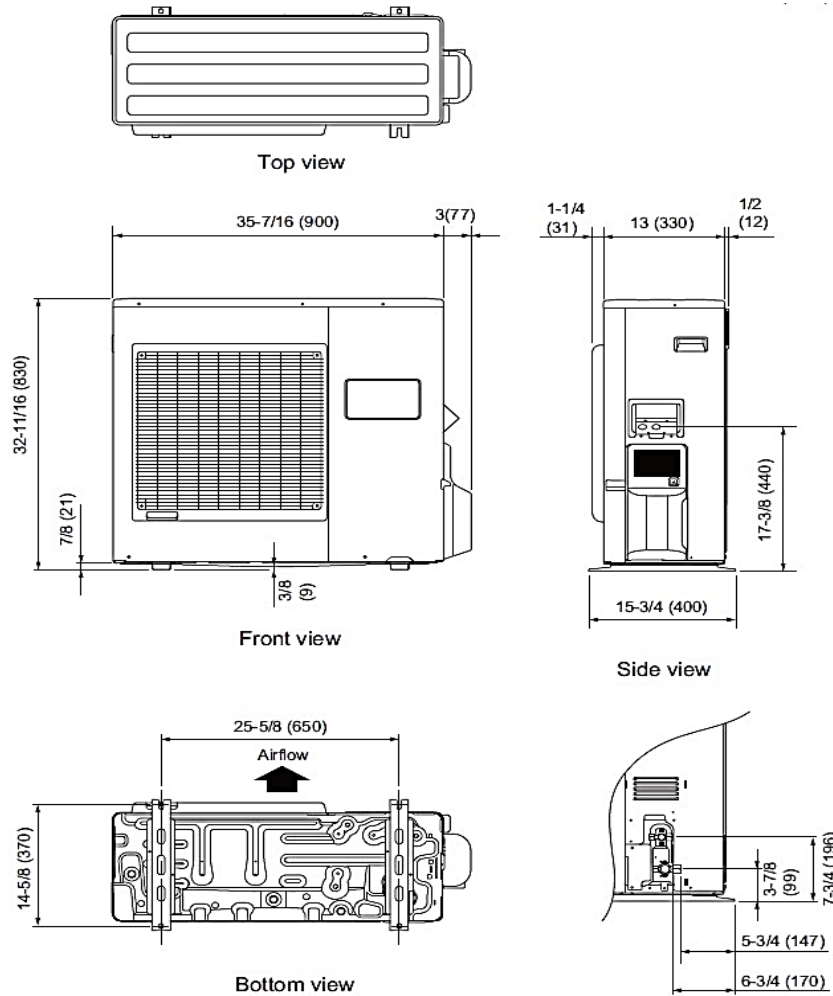
Indoor Unit



DIMENSIONS

Units: In. (mm)

Outdoor Unit



The Fujitsu logo is a worldwide trademark of Fujitsu General Limited. The Airstage logo and name is a worldwide trademark of Fujitsu General Limited and is a registered trademark in Japan, the USA and other countries or areas. Copyright 2022 Fujitsu General America, Inc. Fujitsu's products are subject to continuous improvements. Fujitsu reserves the right to modify product design, specifications and information in this brochure without notice and without incurring any obligations.

Note: Specifications are based on the following conditions:
 Cooling: Indoor temperature of 80°F (26.7°C) DB/67°F (19.4°C) WB, and outdoor temperature of 95°F (35°C) DB/75°F (23.9°C) WB. Heating: Indoor temperature of 70°F (21.1°C) DB/60°F (15.6°C) WB, and outdoor temperature of 47°F (8.3°C) DB/43°F (6.1°C) WB. Pipe length: 25ft. (7.5m), Height difference: 0ft. (0m) (Outdoor unit – indoor unit).