

## Inverter Driven Heat Pump

## 24K BTU Single Zone Wall Mounted System

Job Name \_\_\_\_\_  
 Location \_\_\_\_\_  
 Engineer \_\_\_\_\_  
 Submitted To \_\_\_\_\_  
 Submitted By \_\_\_\_\_  
 Reference \_\_\_\_\_

Date \_\_\_\_\_  
 Approval \_\_\_\_\_  
 Construction \_\_\_\_\_  
 Unit No \_\_\_\_\_  
 Drawing No \_\_\_\_\_

### PRODUCT FEATURES

Auto Changeover  
 24 Hour Timer  
 Auto Louver: 4 way  
 Minimum Heat Mode  
 Quiet Mode  
 Auto Restart  
 Economy Mode  
 Auto Fan



### MODEL NUMBERS

Indoor Unit	ASU24RLB
Outdoor Unit	AOU24RLB
System	24RLB

### EFFICIENCIES

SEER	18.0
EER	10
HSPF	10.6
COP	kW/kW 3.65
	Btu/hW 12.5

### OUTDOOR TEMPERATURE OPERATION RANGE

Cooling	*F(°C)	14 to 115 (-10 to 46)
Heating		5 to 75 (-15 to 24)

### CAPACITIES

Cooling	Rated	BTU/hW	24,000
	Min.-Max.		3100 - 25000
Heating	Rated		24,000
	Min.-Max.		7500-27000

### LINESET REQUIREMENTS

Connection Method		Flare
Liquid	in (mm)	Ø 1/4 (Ø 6.35)
Gas		Ø 1/2 (Ø 12.70)
Pre-Charge Length	ft (m)	49 (15)
Minimum Length		10 (3)
Maximum Length		66 (20)
Max. Height Diff.		49 (15)

### INDOOR DIMENSIONS & WEIGHT

Net (H x W x D)	in	12-10/16 x 39-5/16 x 9
	mm	320 x 998 x 228
Gross (H x W x D)	in	12-9/16 x 42-15/16 x 16-14/16
	mm	319 x 1090 x 429
Net Weight	lb (kg)	31 (14)
Gross Weight		40 (18)

### OUTDOOR DIMENSIONS & WEIGHT

Net (H x W x D)	in	24 - 7/16 x 31 - 2/16 x 11 - 7/16
	mm	620 x 790 x 290
Gross (H x W x D)	in	28 - 1/16 x 37-3/16 x 15 - 9/16
	mm	713 x 945 x 395
Net Weight	lb (kg)	86 (39)
Gross Weight		93 (42)



Indoor Unit ETL#: 3170288  
 Outdoor Unit ETL#: 91987

### Warranty Information



7 Year Compressor, 5 Year Parts out-of-the-box Warranty



10 Year Compressor, 10 Year Parts Warranty when registered within 60 days of installation in a residence



12 Year Compressor, 12 Year Parts Warranty when registered within 60 days of installation in a residence, and installed by a Fujitsu Elite contractor

### ACCESSORIES

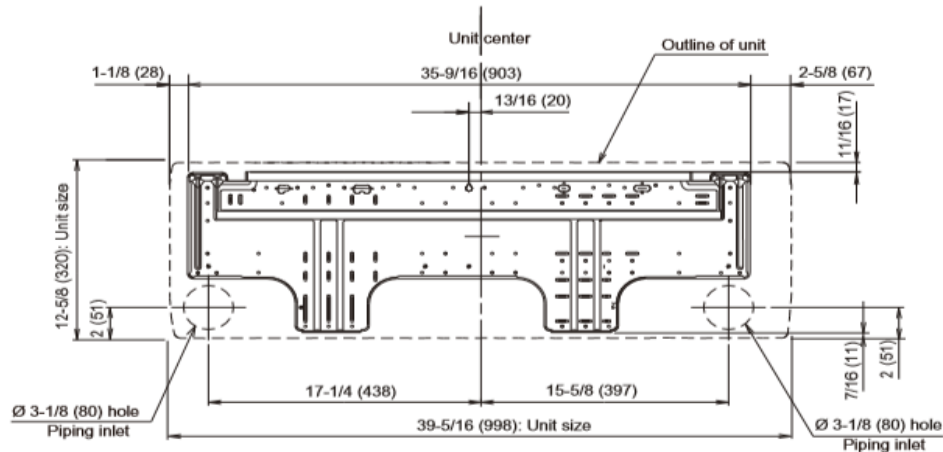
UTY-TTRX	3rd Party Thermostat Converter
FJ-IR-WIFI-1NA	Intesis WiFi IR Module
FJ-RC-WIFI-1NA	Intesis WiFi Wired Module
UTY-TFNXZ2	WiFi Interface Module
UTY-RNNUM	Wired Remote
UTY-RVNUM	Wired Remote w/backlight
UTY-RSNUM	Simple Remote
UTY-XWZX	Dry Contact Wire Kit

## 24K BTU Single Zone Wall

## 24K BTU Single Zone Wall Mounted System

FAN DATA					ELECTRICAL SPECIFICATIONS					
Indoor Unit Airflow Rate	Cooling	High	CFM (m3/h)	659 (1120)	Voltage/Frequency/Phase				208/230V ~ 60Hz	
		Medium		530 (900)	Voltage Range				187-253V	
		Low		435 (740)	Current	Cooling	Rated	A	10.5	
		Quiet		365 (620)		Heating	Rated		8.5	
	Heating	High		647 (1100)	Maximum Operating Current		Cooling		11.8	
		Medium		530 (900)			Heating		13.8	
		Low		435 (740)	Starting Current		10.5			
		Quiet		365 (620)	MCA				17.1	
Outdoor Unit Airflow Rate		Cooling		1,457 (2,475)	Maximum Circuit Breaker				20	
		Heating		1,407 (2,355)	Input Power	Cooling	Rated Min.—Max.	kW	2.4	
SOUND PRESSURE						Heating	Rated Min.—Max.		2.5	
Indoor Unit	Cooling	High	dB (A)	47		Power Factor	Cooling			%
		Medium		41			Heating		98	
		Low		35	OTHER					
		Quiet		31	Moisture Removal		pints/h (L/h)		3(6.3)	
	Heating	High		47	Energy Star				NO	
		Medium		42	Drain hose	Material			PVC	
		Low		36		Size	in (mm)	Ø 15/32 (12) (I.D.), 5/8(16)		
		Quiet		33	Operation Range	Cooling	°F (°C)	64 to 90 (18 to 32)		
Outdoor Unit			%RH	80 or less						
		Heating	°F (°C)	88 (30) or less						
REFRIGERANT										
Type				R410A						
Charge	lb oz	3lbs. 1oz								
	kg	1								
Oil Type	POE (RB68)									

### Wall Bracket Data:



The Fujitsu logo is a worldwide trademark of Fujitsu General Limited. The Halcyon logo and name is a worldwide trademark of Fujitsu General America, Inc. Fujitsu's products are subject to continuous improvements. Fujitsu reserves the right to modify product design, specifications and information in this brochure without notice and without incurring any obligations.

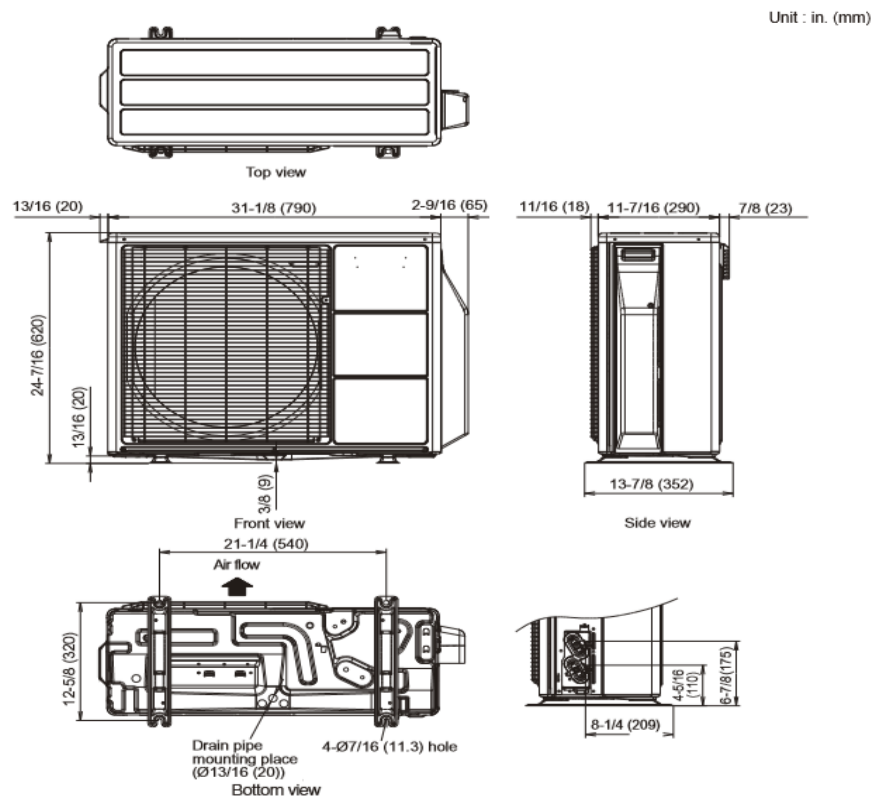
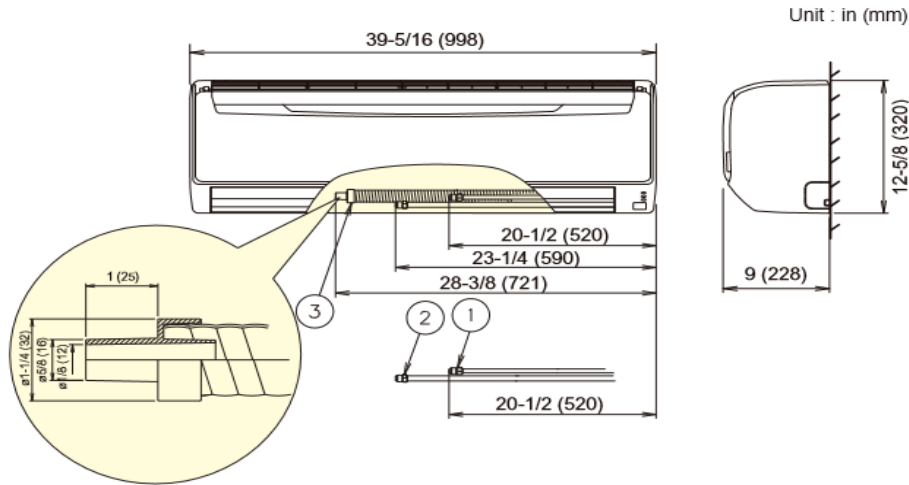
Note: Specifications are based on the following conditions:  
Cooling: Indoor temperature of 80°F (26.7°C) DB/67°F (19.4°C) WB, and outdoor temperature of 95°F (35°C) DB/75°F (23.9°C) WB. Heating: Indoor temperature of 70°F (21.1°C) DB/60°F (15.6°C) WB, and outdoor temperature of 47°F (8.3°C) DB/43°F (6.1°C) WB. Pipe length: 25ft. (7.5m), Height difference: 0ft. (0m) (Outdoor unit – indoor unit).

24K BTU Single Zone Wall

24K BTU Single Zone Wall Mounted System

DIMENSIONS

Units: In. (mm)



The Fujitsu logo is a worldwide trademark of Fujitsu General Limited. The Halcyon logo and name is a worldwide trademark of Fujitsu General Limited and is a registered trademark in Japan, the USA and other countries or areas. Copyright 2018 Fujitsu General America, Inc. Fujitsu's products are subject to continuous improvements. Fujitsu reserves the right to modify product design, specifications and information in this brochure without notice and without incurring any obligations.

Note: Specifications are based on the following conditions:  
 Cooling: Indoor temperature of 80°F (26.7°C) DB/67°F (19.4°C) WB, and outdoor temperature of 95°F (35°C) DB/75°F (23.9°C) WB. Heating: Indoor temperature of 70°F (21.1°C) DB/60°F (15.6°C) WB, and outdoor temperature of 47°F (8.3°C) DB/43°F (6.1°C) WB. Pipe length: 25ft. (7.5m). Height difference: 0ft. (0m) (Outdoor unit - indoor unit).