

Inverter Driven Heat Pump

18,000 BTU Single Zone XLTH Wall Mounted System

Job Name _____
 Location _____
 Engineer _____
 Submitted To _____
 Submitted By _____
 Reference _____

Date _____
 Approval _____
 Construction _____
 Unit No _____
 Drawing No _____

PRODUCT FEATURES

Auto Changeover
 Weekly & 24 hr. Timer
 Auto Louver: Up/Down
 Minimum Heat Mode
 Wireless Remote Control Included
 Auto Restart
 Economy Mode
 Base Pan Heater



MODEL NUMBERS	
Indoor Unit	ASU18RLF
Outdoor Unit	AOU18RLXFWH
System	18RLXFWH

EFFICIENCIES	
SEER	20
SEER 2	20
EER	13.3
EER 2	13.3
HSPF	10.4
HSPF 2 (IV) / HSPF 2 (V)	10/8.2
COP	kW/kW 3.62
COP	Btu/hW 12.3
COP2	kW/kW 3.62
COP2	Btu/hW 12.3

OUTDOOR TEMPERATURE OPERATION RANGE	
Cooling	*F(°C) -5 to 115 (-21 to 46)
Heating*	*-15 to 75 (-26 to 24)

CAPACITIES	
Cooling	Rated 18000
	Min.-Max. 7,000-23,000
Heating	Rated 21600
	Min.-Max. 7,000-29,000

LINESET REQUIREMENTS	
Connection Method	Flare
Liquid	in (mm) Ø3/8 (Ø9.52)
Gas	Ø5/8 (Ø15.88)
Pre-charge length	ft (m) 66 (20)
Minimum Length	16 (5)
Max. length	164 (50)
Max. height difference	98 (30)

INDOOR DIMENSIONS & WEIGHT	
Net (H x W x D)	in (mm) 12-5/8 x 39-5/16 x 9 (320 x 998 x 228)
Gross (H x W x D)	12-9/16 x 42-15/16 x 16-7/8 (319 x 1,090 x 429)
Net Weight	lb (kg) 31 (14)
Gross Weight	41 (18.5)

OUTDOOR DIMENSIONS & WEIGHT	
Net (H x W x D)	in (mm) 32-11/16 x 35-7/16 x 13 (830 x 900 x 330)
Gross (H x W x D)	39-3/8 x 41-5/16 x 17-1/2 (1,000 x 1,050 x 445)
Net Weight	lb (kg) 134 (61)
Gross Weight	152 (69)

* System continues to operate below rated outdoor operation temperature range, subject to varying conditions. System has no low temperature cut out. Capacity is not tested outside of the rated temperature range.

Warranty Information



7 Year Compressor, 5 Year Parts out-of-the-box Warranty



10 Year Compressor, 10 Year Parts Warranty when registered within 60 days of installation in a residence



12 Year Compressor, 12 Year Parts Warranty when registered within 60 days of installation in a residence, and installed by a Fujitsu Elite contractor

ACCESSORIES

UTY-RVNUM	Wired Remote Controller
UTY-RNNUM	Wired Remote Controller
UTY-RSNUM	Simple Remote Controller
UTY-XWZX	External Connect Kit
UTY-TTRXZ1	24 V Thermostat Converter
FJ-RC-WIFI-1BT	Intesis WiFi Module
FJ-IR-WIFI-1NA	Intesis IR WiFi Module
UTY-TFNXZ2	WiFi Interface Module



This system combination is Energy Star qualified



+App available in Apple® App Store and Google® Play Store.

Due to continuous product improvements, specifications are subject to change without notice. Please log in to the Fujitsu Portal for the most up-to-date documentation <https://connect.fujitsugeneral.com>

Effective Date: 05/07/2024

Fujitsu General America, Inc. • 342 Changebridge Rd, Pine Brook, NJ 07058 • Toll Free: (888) 888-3424 • www.fujitsugeneral.com

Inverter Driven Heat Pump

18,000 BTU Single Zone XLTH Wall Mounted System

FAN DATA

Indoor Unit Airflow rate	Cooling	HIGH	CFM (m3/h)	542 (920)
		MED		436 (740)
		LOW		365 (620)
		QUIET		306 (520)
	Heating	HIGH		542 (920)
		MED		436 (740)
		LOW		365 (620)
		QUIET		318 (540)
Outdoor Unit Airflow rate	Cooling			1,489 (2,530)
	Heating			1,489 (2,530)

SOUND PRESSURE

Indoor Unit	Cooling	HIGH	dB (A)	43
		MED		37
		LOW		33
		QUIET		28
	Heating	HIGH		44
		MED		37
		LOW		33
		QUIET		28
Outdoor Unit	Cooling			47
	Heating			50

REFRIGERANT

Type	R410A		
Charge	lb oz	4 lb 10.1 oz	
	g	2100	
Oil Type	POE (RB68)		

ELECTRICAL SPECIFICATIONS

Voltage/Frequency/Phase			208/230 V ~ 60 Hz	
Available Voltage Range			187–253 V	
Current	Cooling	Rated	A	6.2
	Heating	Rated		7.8
Maximum Operating Current		Cooling		13.5
		Heating		14.5
Starting Current				8
MCA				17
Maximum Circuit Breaker				20
Input Power	Cooling	Rated	kW	1.35
		Min.–Max.		0.50–3.01
	Heating	Rated		1.75
		Min.–Max.		0.48–3.23
Power Factor	Cooling			95
	Heating			97.6

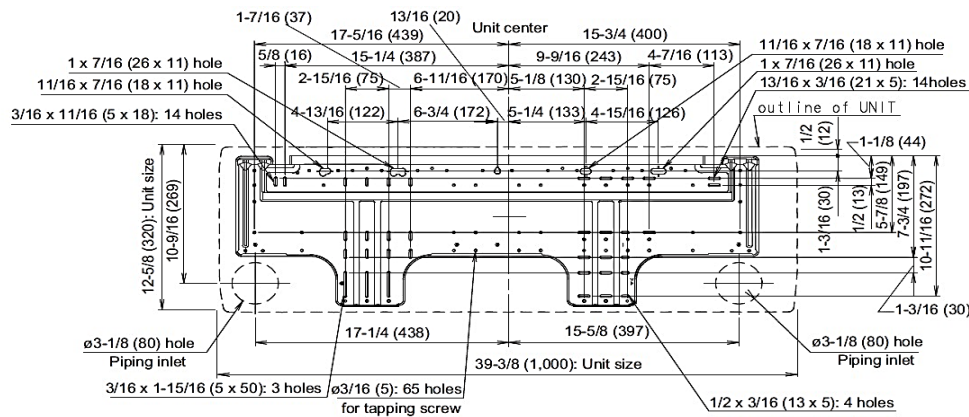
OTHER

Moisture Removal		pints/h (L/h)	5.9 (2.8)
Energy Star		Yes	
Drain hose	Material	PVC	
	Tip diameter	in (mm)	Ø 15/32 (Ø 12) (I.D.), Ø 5/8 (Ø 16) (O.D.)
Operation Range	Cooling	°F (°C)	64 to 90 (18 to 32)
		%RH	80 or less
	Heating	°F (°C)	88 (30) or less

DIMENSIONS:

Units: In. (mm)

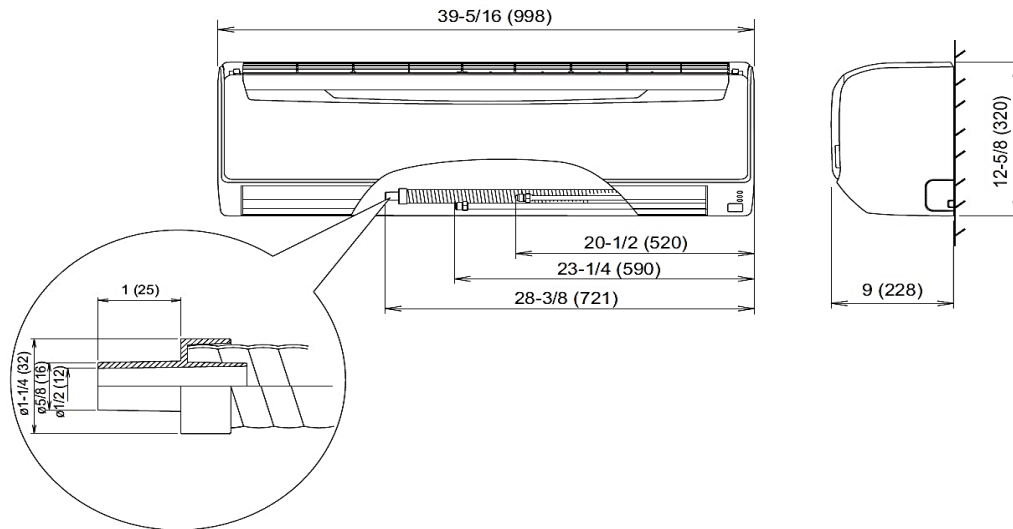
Wall Bracket Data:



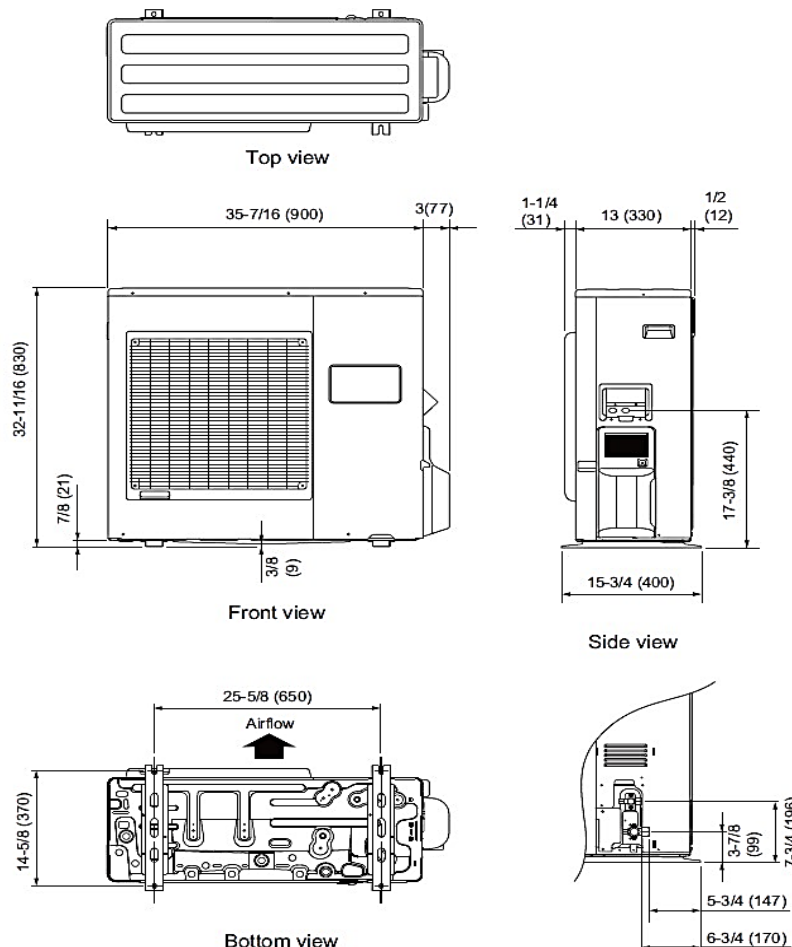
DIMENSIONS

Units: In. (mm)

Indoor Unit



Outdoor Unit



The Fujitsu logo is a worldwide trademark of Fujitsu General Limited. The Airstage logo and name is a worldwide trademark of Fujitsu General Limited and is a registered trademark in Japan, the USA and other countries or areas. Copyright 2024 Fujitsu General America, Inc. Fujitsu's products are subject to continuous improvements. Fujitsu reserves the right to modify product design, specifications and information in this brochure without notice and without incurring any obligations.

Note: Specifications are based on the following conditions:
Cooling: Indoor temperature of 80°F (26.7°C) DB/67°F (19.4°C) WB, and outdoor temperature of 95°F (35°C) DB/75°F (23.9°C) WB. Heating: Indoor temperature of 70°F (21.1°C) DB/60°F (15.6°C) WB, and outdoor temperature of 47°F (8.3°C) DB/43°F (6.1°C) WB. Pipe length: 25ft. (7.5m), Height difference: 0ft. (0m) (Outdoor unit - indoor unit).