

WALL MOUNTED TYPE
ROOM AIR CONDITIONER
FOR EXTRA LOW TEMP. DISTRICT

SERVICE MANUAL



Indoor unit	Outdoor unit
ASU18RLF	AOU18RLXFWH
ASU24RLF	AOU24RLXFWH

CONTENTS

SPECIFICATIONS	1
DIMENSIONS	4
REFRIGERANT SYSTEM DIAGRAM	6
CIRCUIT DIAGRAM	7
PCB CIRCUIT DIAGRAM	8
ERROR DERECTION	10
PARTS (INDOOR UNIT)	11
PARTS (OUTDOOR UNIT)	17
ACCESSORIES	21

SPECIFICATIONS

INDOOR UNIT

Type				Wall mounted		
				Inverter heat pump		
Model name				ASU18RLF	ASU24RLF	
Power supply				208/230 V ~ 60 Hz		
Available voltage range				187—253 V		
Capacity	Cooling	Rated	kW	5.28	6.44	
			Btu/h	18,000	22,000	
		Min.—Max.	kW	2.05—6.74	2.90—8.00	
			Btu/h	7,000—23,000	9,900—27,300	
	Heating	Rated	kW	6.30	7.38	
			Btu/h	21,600	25,200	
		Min.—Max.	kW	2.05—8.50	2.20—10.61	
			Btu/h	7,000—29,000	7,500—36,200	
	Heating (17°F) *1	Rated	kW	4.28	5.28	
			Btu/h	14,600	18,000	
		Max.	kW	6.68	8.12	
			Btu/h	22,800	27,700	
	Heating (5°F) *2	Rated	kW	5.57	6.8	
			Btu/h	19,000	23,200	
		Max.	kW	6.33	7.39	
			Btu/h	21,600	25,210	
Input power	Cooling	Rated	kW	1.35	1.76	
				Min.—Max.	0.50—3.01	0.58—3.42
	Heating	Rated		1.75	1.94	
				Min.—Max.	0.48—3.23	0.50—3.53
	Heating (17°F) *1	Rated		1.58	1.68	
				Max.	3.0	3.59
	Heating (5°F) *2	Rated		2.55	3.32	
				Max.	2.75	3.59
Current	Cooling	Rated	A	6.2	7.9	
	Heating			7.8	8.6	
EER2	Cooling		kW/kW	3.90	3.66	
			Btu/hW	13.3	12.5	
COP2	Heating		kW/kW	3.62	3.80	
			Btu/hW	12.3	13.0	
SEER2	Cooling		Btu/hW	20.0	19.5	
HSPF2	Heating		Btu/hW	10.0	10.5	
Power factor	Cooling		%	95.0	97.0	
	Heating			97.6	98.1	
Moisture removal			pints/h (L/h)	5.9 (2.8)	6.3 (3.0)	
Maximum operating current *3		Cooling	A	13.5	15.0	
		Heating		14.5	15.5	
Fan	Airflow rate	Cooling	CFM (m³/h)	542 (920)	659 (1,120)	
				MED	436 (740)	530 (900)
				LOW	365 (620)	436 (740)
				QUIET	306 (520)	365 (620)
		Heating		HIGH	542 (920)	677 (1,150)
				MED	436 (740)	530 (900)
				LOW	365 (620)	436 (740)
				QUIET	318 (540)	365 (620)
	Type × Q'ty	Cross flow fan × 1				
	Motor output			W	53	
Sound pressure level *4	Cooling	HIGH	dB (A)	43	49	
				MED	37	42
				LOW	33	37
				QUIET	28	33
	Heating	HIGH		44	49	
		MED		37	42	
		LOW		33	37	
		QUIET		28	33	
Heat exchanger type	Dimensions (H × W × D)		in (mm)	Main: 14-7/8 × 32-3/4 × 1-1/16 (378 × 832 × 26.6) Sub: 3-5/16 × 32-3/4 × 1/2 (84 × 832 × 13.3)		
	Fin pitch		FPI	Main: 21, Sub: 18		
	Rows × Stages			Main: 2 × 18, Sub: 1 × 4		
	Pipe type			Copper tube		
	Fin type			Aluminum		
Enclosure	Material			Polystyrene		
	Color			White Approximate color of Munsell N 9.25/		
Dimensions (H × W × D)	Net		in	12-5/8 × 39-5/16 × 9		
			mm	320 × 998 × 228		
	Gross		in	12-9/16 × 42-15/16 × 16-7/8		
			mm	319 × 1,090 × 429		
Weight	Net		lb (kg)	31 (14)		
	Gross			41 (18.5)		
Connection pipe	Size	Liquid	in (mm)	Ø 3/8 (Ø 9.52)		
		Gas		Ø 5/8 (Ø 15.88)		
	Method			Flare		
Drain hose	Material			PVC		
	Size		in (mm)	Ø 15/32 (Ø 12) (I.D.), Ø 5/8 (Ø 16) (O.D.)		
Operation range	Cooling		°F (°C)	64 to 90 (18 to 32)		
			%RH	80 or less		
	Heating		°F (°C)	88 (30) or less		
Remote controller type				Wireless (Wired [option])		

Type	Wall mounted	
	Inverter heat pump	
Model name	ASU18RLF	ASU24RLF
NOTES: <ul style="list-style-type: none"> Specifications are based on the following conditions: <ul style="list-style-type: none"> Cooling: Indoor temperature of 80 °FDB (26.67 °CDB) /67 °FWB (19.44 °CWB), and outdoor temperature of 95 °FDB (35 °CDB) / 75 °FWB (23.9 °CWB). Heating: Indoor temperature of 70 °FDB (21.11 °CDB) /59 °FWB (15 °CWB), and outdoor temperature of 47 °FDB (8.33 °CDB) /43 °FWB (6.11 °CWB). *1: Heating (17°F): Indoor temperature of 70°FDB (21.11°CDB)/60°FWB (15.56°CWB), and outdoor temperature of 17°FDB (-8.33°CDB)/15°FWB (-9.44°CWB). *2: Heating (5°F): Indoor temperature of 70°FDB (21.11°CDB)/60°FWB (15.56°CWB), and outdoor temperature of 5°FDB (-15.0°CDB)/4°FWB (-15.56°CWB). Test conditions are based on AHRI 210/240 2023. Pipe length: 24 ft 6 in (7.5 m), Height difference: 0 ft (0 m). (Between outdoor unit and indoor unit.) Protective function might work when using it outside the operation range. *3: Maximum current is maximum value when operated within the operation range. *4: Sound pressure level: <ul style="list-style-type: none"> Measured values in manufacturer's anechoic chamber. Because of the surrounding sound environment, the sound levels measured in actual installation conditions might be higher than the specified values here. 		

M condition							
Model name				ASU18RLF		ASU24RLF	
Capacity	Cooling	Rated	kW	5.28	6.44		
			Btu/h	18,000	22,000		
		Min.—Max.	kW	2.05—6.74	2.90—8.00		
			Btu/h	7,000—23,000	9,900—27,300		
	Heating	Rated	kW	6.30	7.38		
			Btu/h	21,600	25,200		
		Min.—Max.	kW	2.05—8.50	2.20—10.61		
			Btu/h	7,000—29,000	7,500—36,200		
	Heating (17°F) *	Rated	kW	4.28	5.28		
			Btu/h	14,600	18,000		
		Max.	kW	6.68	8.12		
			Btu/h	22,800	27,700		
Input power	Cooling	Rated	kW	1.35	1.76		
		Min.—Max.		0.50—3.01	0.58—3.42		
	Heating	Rated		1.75	1.94		
		Min.—Max.		0.48—3.23	0.50—3.53		
	Heating (17°F) *	Rated		1.58	1.68		
		Max.		3.0	3.59		
Current	Cooling	Rated	A	6.2	7.9		
	Heating			7.8	8.6		
EER	Cooling			kW/kW	3.90	3.66	
				Btu/hW	13.3	12.5	
COP	Heating			kW/kW	3.62	3.80	
				Btu/hW	12.3	13.0	
SEER	Cooling			Btu/hW	20.0	19.5	
HSPF	Heating			Btu/hW	10.4	10.5	
Power factor	Cooling	%		95.0	97.0		
	Heating			97.6	98.1		
NOTES:							
<ul style="list-style-type: none">Specifications are based on the following conditions:<ul style="list-style-type: none">Cooling: Indoor temperature of 80 °FDB (26.67 °CDB) /67 °FWB (19.44 °CWB), and outdoor temperature of 95 °FDB (35 °CDB) / 75 °FWB (23.9 °CWB).Heating: Indoor temperature of 70 °FDB (21.11 °CDB) /59 °FWB (15 °CWB), and outdoor temperature of 47 °FDB (8.33 °CDB) /43 °FWB (6.11 °CWB).*: Heating (17°F): Indoor temperature of 70°FDB (21.11°CDB)/60°FWB (15.56°CWB), and outdoor temperature of 17°FDB (-8.33°CDB)/15°FWB (-9.44°CWB).Test conditions are based on AHRI 210/240 2017.Pipe length: 24 ft 6 in (7.5 m), Height difference: 0 ft (0 m). (Between outdoor unit and indoor unit.)							

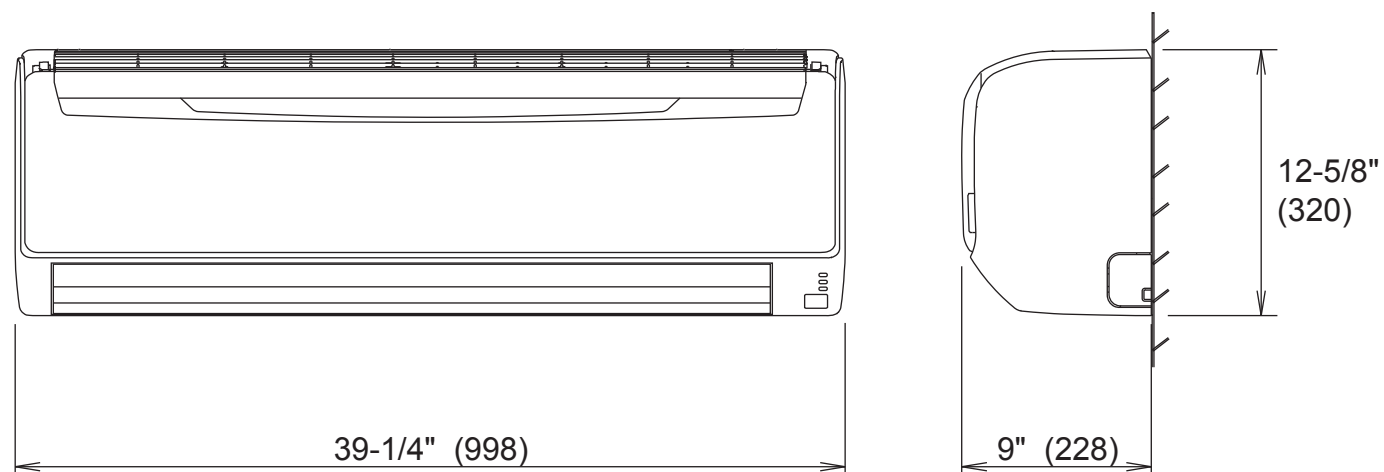
OUTDOOR UNIT

Type				Inverter heat pump	
Model name				AOU18RLXFWH	AOU24RLXFWH
Power supply				208/230 V~ 60 Hz	
Available voltage range				187—253 V	
Starting current			A	8.0	10.5
Fan	Airflow rate	Cooling	CFM (m³/h)	1,489 (2,530)	2,001 (3,400)
		Heating		1,489 (2,530)	2,119 (3,600)
	Type × Q'ty			Propeller fan × 1	
Motor output			W	100	
Sound pressure level *		Cooling	dB (A)	47	54
		Heating		50	55
Heat exchanger type		Dimensions (H × W × D)	in	31-7/16 × 35-7/16 × 1-7/16	
			mm	798 × 900 × 36.4	
		Fin pitch	FPI	20	
		Rows × Stages		2 × 38	
		Pipe type		Copper	
		Fin type	Type (Material)	Corrugate (Aluminum)	
			Surface treatment	Corrosion resistance (Blue fin)	
Compressor	Type			DC twin rotary	
	Motor output		W	2,100	
Refrigerant		Type			R410A
		Charge	lb oz	4 lb 10.1 oz	
			g	2,100	
Refrigerant oil		Type			POE (RB68)
		Amount	in³ (cm³)	48.8 (800)	
Enclosure		Material			Steel sheet
		Color			Beige
			Approximate color of Munsell 10YR 7.5/1.0		
Dimensions (H × W × D)	Net		in	32-11/16 × 35-7/16 × 13	
			mm	830 × 900 × 330	
	Gross		in	39-3/8 × 41-5/16 × 17-1/2	
			mm	1,000 × 1,050 × 445	
Weight	Net		lb (kg)	134 (61)	
	Gross			152 (69)	
Connection pipe	Size	Liquid	in (mm)	Ø3/8 (Ø9.52)	
		Gas		Ø5/8 (Ø15.88)	
	Method		Flare		
	Pre-charge length		ft (m)	66 (20)	
	Max. length			164 (50)	
	Max. height difference			98 (30)	
Operation range		Cooling	°F (°C)	-5 to 115 (-21 to 46)	
		Heating		-15 to 75 (-26 to 24)	
NOTES:					
<ul style="list-style-type: none">Specifications are based on the following conditions:<ul style="list-style-type: none">Cooling: Indoor temperature of 80°FDB (26.67°CDB)/67°FWB (19.44°CWB), and outdoor temperature of 95°FDB (35°CDB)/75°FWB (23.9°CWB).Heating: Indoor temperature of 70°FDB (21.11°CDB)/59°FWB (15°CWB), and outdoor temperature of 47°FDB (8.33°CDB)/43°FWB (6.11°CWB).Pipe length: 24 ft 6 in (7.5 m), Height difference: 0 ft (0 m). (Between outdoor unit and indoor unit.)Protective function might work when using it outside the operation range.*: Sound pressure level<ul style="list-style-type: none">Measured values in manufacturer's anechoic chamber.Because of the surrounding sound environment, the sound levels measured in actual installation conditions might be higher than the specified values here.					

DIMENSIONS

INDOOR UNIT

Unit : inch (mm)



Drain pipe diameter

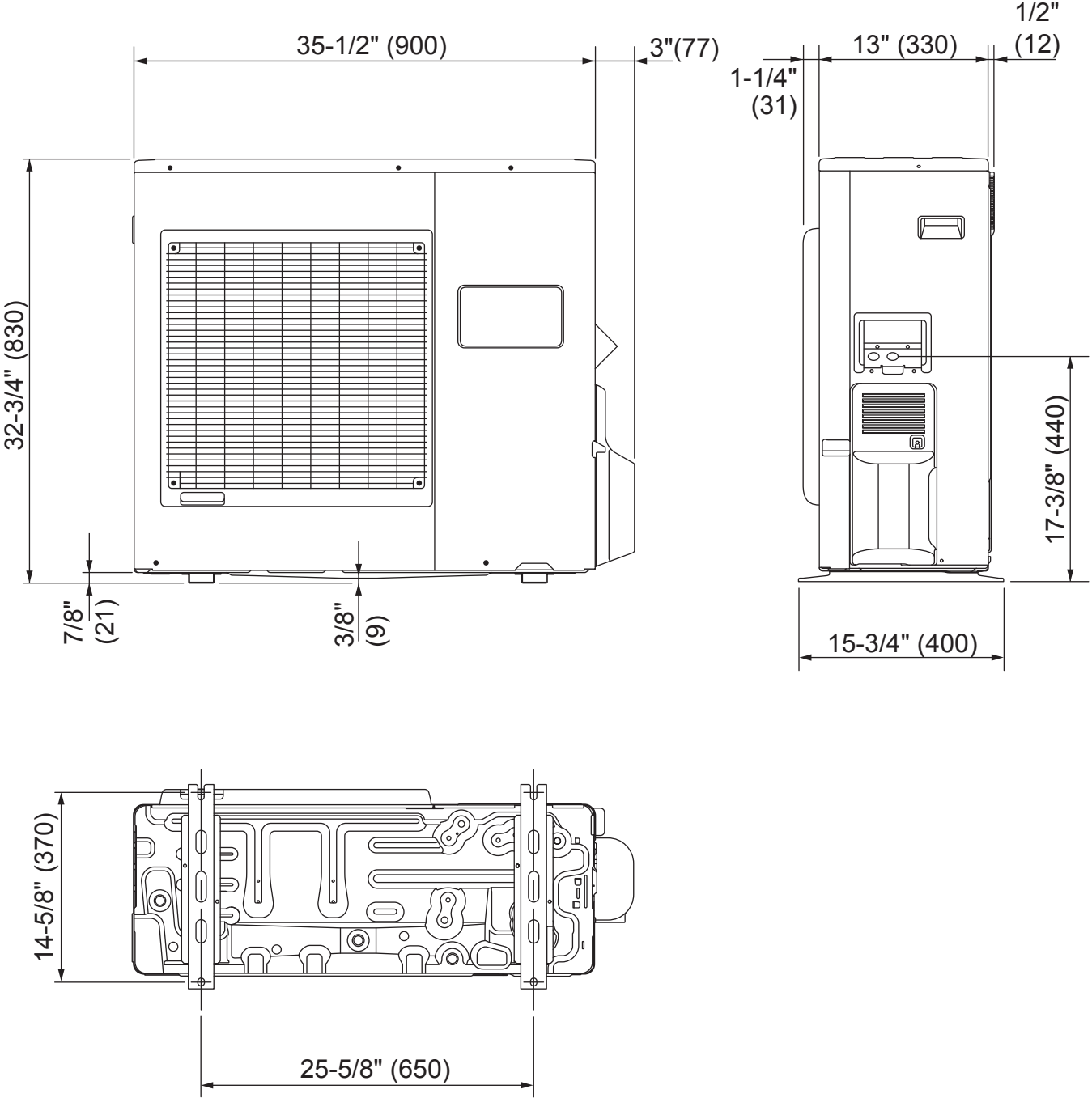
Inside : $\frac{5}{8}$ inch (16 mm)

Outside : $1\frac{3}{32}$ inch (28 mm)

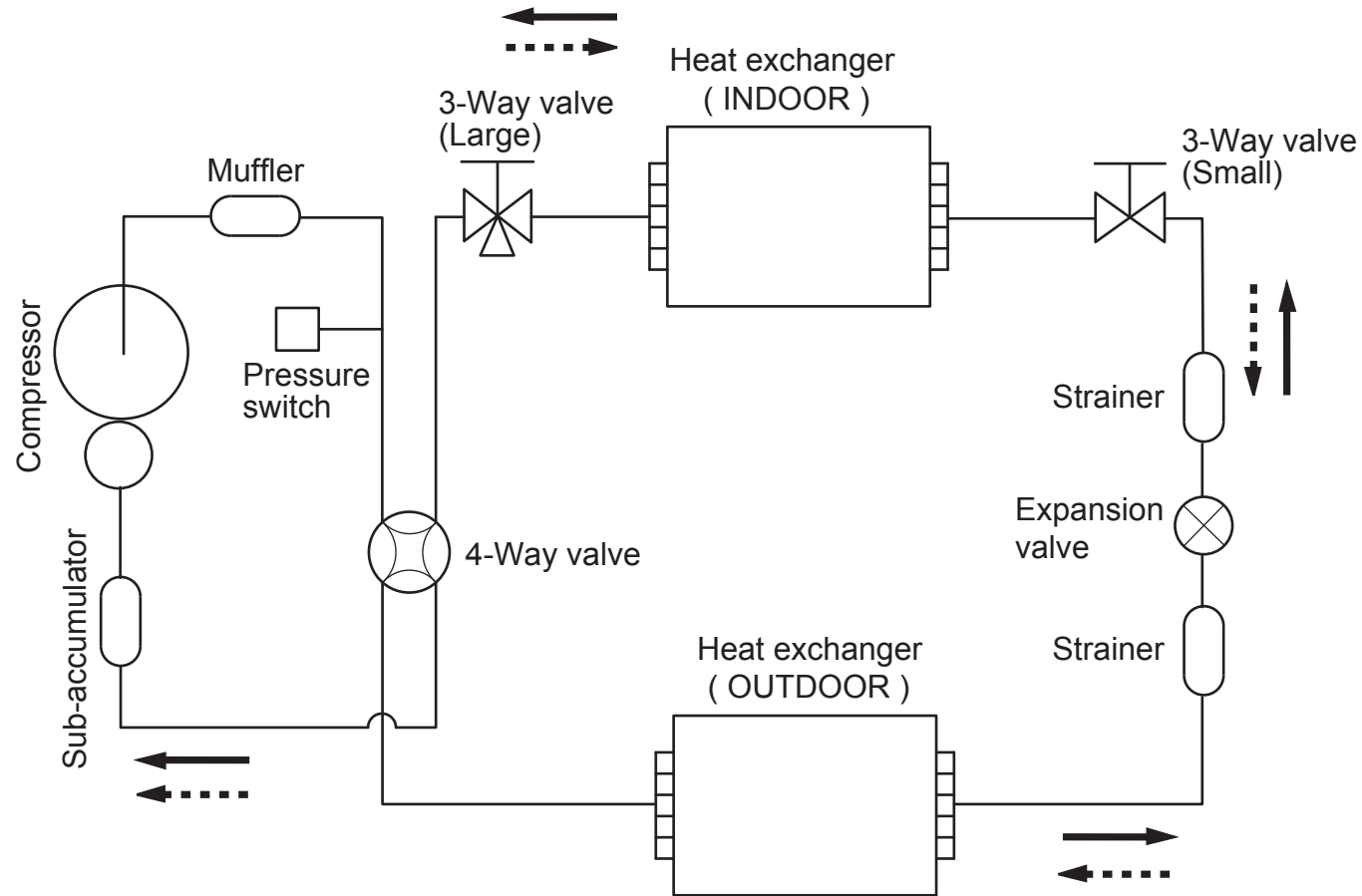
Liquid pipe diameter : $\frac{3}{8}$ inch (9.52 mm)

Gas pipe diameter : $\frac{5}{8}$ inch (15.88 mm)

OUTDOOR UNIT
Unit : inch (mm)



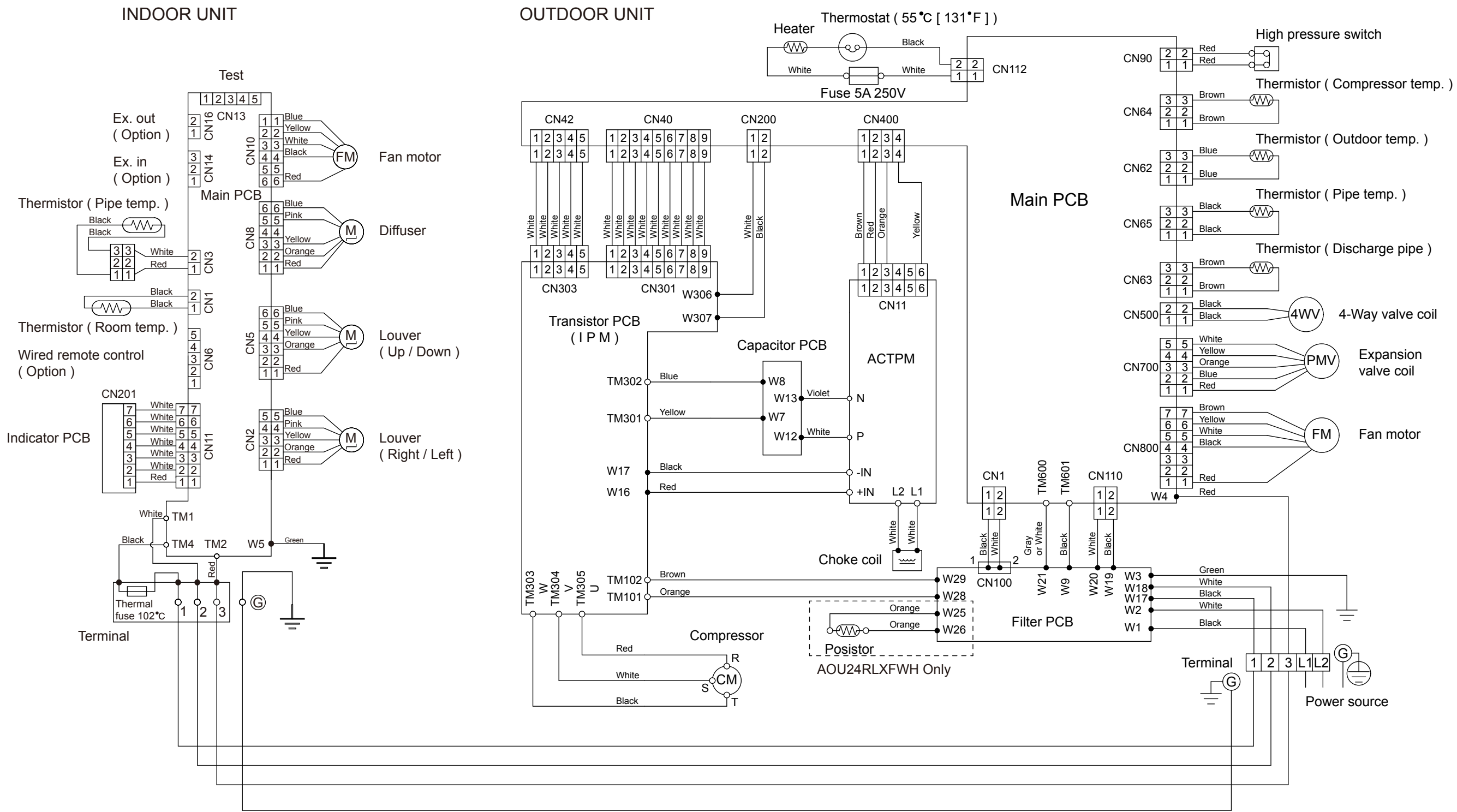
REFRIGERANT SYSTEM DIAGRAM



—————> Cooling flow
 - - - - -> Heating flow

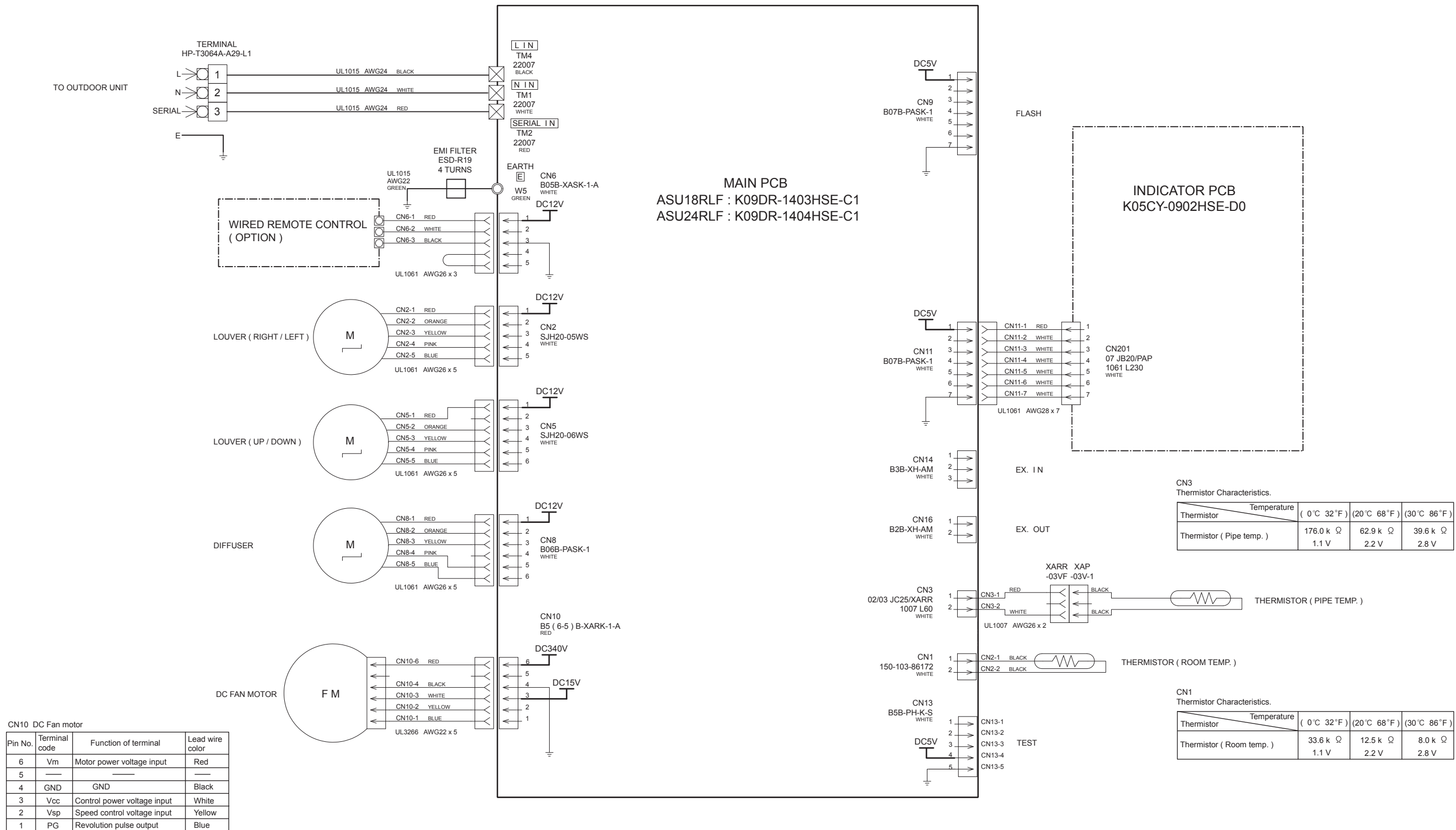
Refrigerant pipe diameter
 Liquid : 3/8" (9.52 mm)
 Gas : 5/8" (15.88 mm)

CIRCUIT DIAGRAM



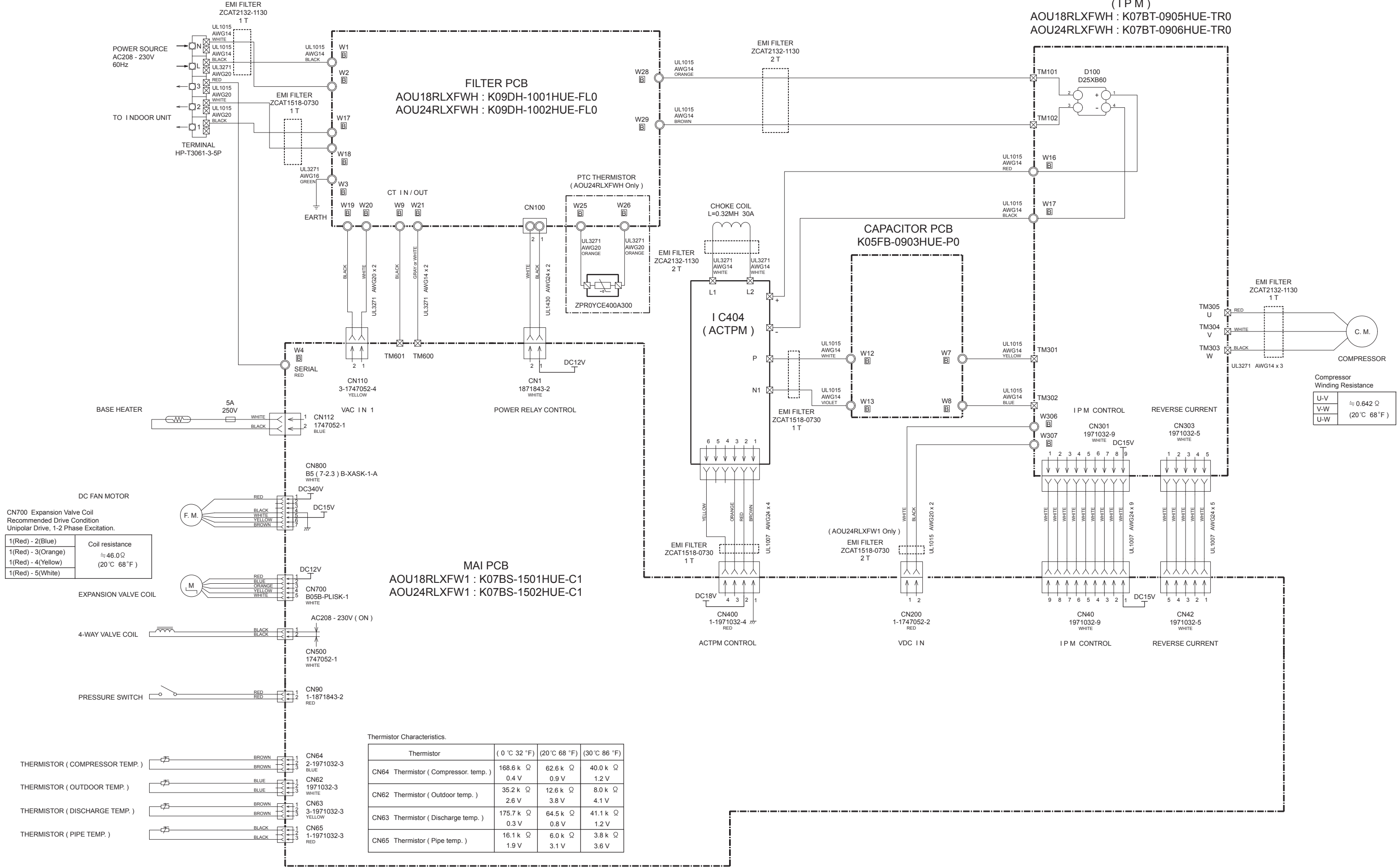
PCB CIRCUIT DIAGRAM

CONTROL UNIT
ASU18RLF : EZ-0090DHSE
ASU24RLF : EZ-0104HSE



INVERTER ASSEMBLY
AOU18RLXFWH : EZ-0150THUE
AOU24RLXFWH : EZ-0150WHUE

TRANSISTOR PCB
(I P M)
AOU18RLXFWH : K07BT-0905HUE-TR0
AOU24RLXFWH : K07BT-0906HUE-TR0



Compressor Winding Resistance

U-V	$\approx 0.642 \Omega$ (20°C 68°F)
V-W	
U-W	

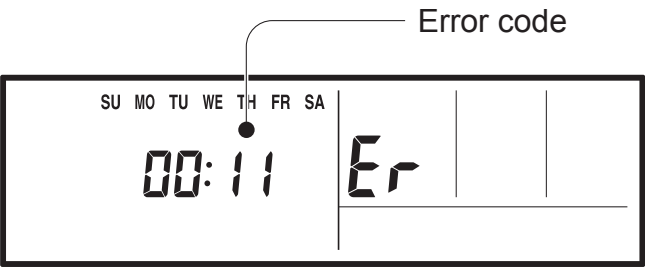
Thermistor Characteristics.

Thermistor	(0 °C 32 °F)	(20 °C 68 °F)	(30 °C 86 °F)
CN64 Thermistor (Compressor. temp.)	168.6 k Ω 0.4 V	62.6 k Ω 0.9 V	40.0 k Ω 1.2 V
CN62 Thermistor (Outdoor temp.)	35.2 k Ω 2.6 V	12.6 k Ω 3.8 V	8.0 k Ω 4.1 V
CN63 Thermistor (Discharge temp.)	175.7 k Ω 0.3 V	64.5 k Ω 0.8 V	41.1 k Ω 1.2 V
CN65 Thermistor (Pipe temp.)	16.1 k Ω 1.9 V	6.0 k Ω 3.1 V	3.8 k Ω 3.6 V

ERROR DETECTION

If you use a wired type remote control, error codes will appear on the remote control display. If you use a wireless remote control, the lamp on the photodetector unit will output error codes by way of blinking patterns. See the lamp blinking patterns and error codes in the table below. An error display is displayed only during operation.

Wired remote control display (Option)

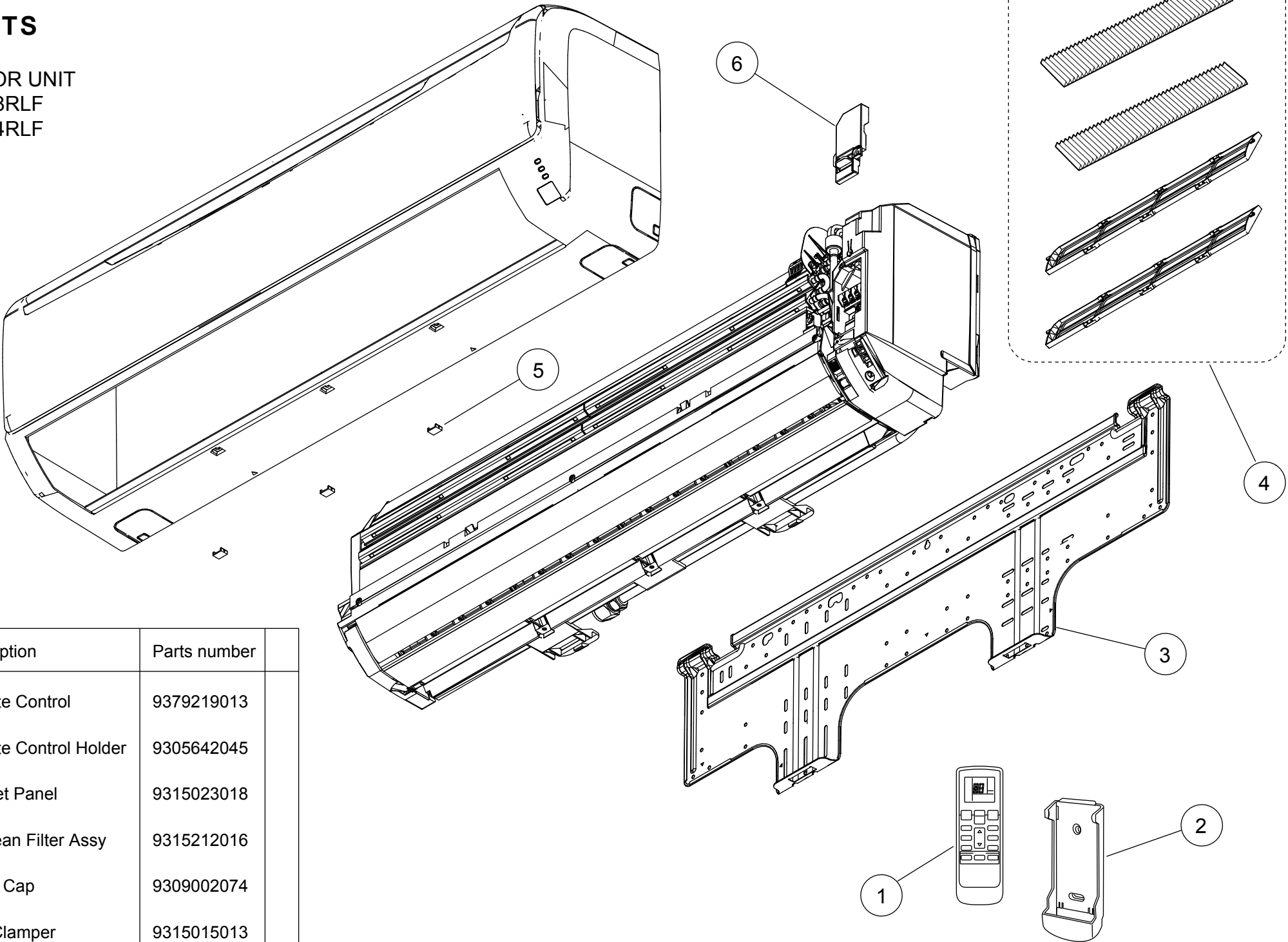


Error display			Wired remote control Error code	Mode	DESCRIPTION	Remark
OPERATION lamp (green)	TIMER lamp (orange)	ECONOMY lamp (green)				
● (1)	● (1)	◇	11	Communication	Serial communication error	•When the indoor unit cannot receive the signal from the branch unit •When the branch unit cannot receive the signal from the indoor unit
● (1)	● (2)	◇	12	Communication	Remote control communication error	•Wired remote control communication error
● (1)	● (5)	◇	15	Communication	Scan error	•Check operation incompleteness error (normally, operation disabled)
● (2)	● (1)	◇	21	Function setting	Initial setting error	•Wiring mistake
● (2)	● (2)	◇	22	Function setting	Indoor unit capacity error	•Indoor unit capacity error
● (2)	● (3)	◇	23	Function setting	Connection disabled (series error)	•Combination error
● (2)	● (4)	◇	24	Function setting	Connection unit number error	•Connection unit number error (indoor unit) •Connection unit number error (branch unit)
● (3)	● (2)	◇	32	Indoor unit	Indoor unit main PCB error	•Indoor unit PCB Model information error
● (3)	● (5)	◇	35	Indoor unit	Manual auto switch error	•Manual auto switch error
● (4)	● (1)	◇	41	Indoor unit	Room error	•Inlet thermistor error
● (4)	● (2)	◇	42	Indoor unit	Indoor unit Heat Ex. sensor error	•Indoor unit Heat Ex. Middle thermistor error
● (5)	● (1)	◇	51	Indoor unit	Indoor unit fan motor error	•Main fan motor lock error •Main fan motor revolution speed error
● (5)	● (3)	◇	53	Indoor unit	Water Drain error	•Drain pump error
● (5)	● (15)	◇	50	Indoor unit	Indoor unit error	•Indoor unit error
● (6)	● (2)	◇	62	Outdoor unit	Outdoor unit main PCB error	•Outdoor unit PCB Model information error •Outdoor unit PCB microcomputer communication error
● (6)	● (3)	◇	63	Outdoor unit	Inverter PCB error	•Inverter error
● (6)	● (4)	◇	64	Outdoor unit	Active filter error, PFC circuit error	•Voltage error stoppage permanently •Voltage error (can restore) •Over current protected operation stoppage permanently •PFC hardware error
● (6)	● (5)	◇	65	Outdoor unit	IPM error	•Trip terminal L error
● (6)	● (10)	◇	6A	Outdoor unit	Display panel error	•Microcomputers communication error
● (7)	● (1)	◇	71	Outdoor unit	Discharge thermistor error	•Discharge thermistor 1 error
● (7)	● (2)	◇	72	Outdoor unit	Compressor thermistor error	•Compressor thermistor 1 error
● (7)	● (3)	◇	73	Outdoor unit	Outdoor unit Heat Ex. Sensor error	•Outdoor unit Heat Ex. liquid thermistor error
● (7)	● (4)	◇	74	Outdoor unit	Outdoor thermistor error	•Outdoor thermistor error
● (7)	● (5)	◇	75	Outdoor unit	Suction Gas thermistor error	•Suction Gas thermistor error
● (7)	● (7)	◇	77	Outdoor unit	Heat sink thermistor error	•Heat sink thermistor error
● (8)	● (2)	◇	82	Outdoor unit	Sub-cool Heat Ex. gas thermistor error	•Sub-cool Heat Ex. gas inlet thermistor error •Sub-cool Heat Ex. gas outlet thermistor error
● (8)	● (3)	◇	83	Outdoor unit	Liquid pipe thermistor error	•Liquid pipe thermistor 1 error
● (8)	● (4)	◇	84	Outdoor unit	Current sensor error	•Current sensor 1 error (stoppage permanently)
● (8)	● (6)	◇	86	Outdoor unit	Pressure sensor error	•Discharge pressure sensor error •Suction pressure sensor error •High pressure switch 1 error
● (9)	● (4)	◇	94	Outdoor unit	Trip detection	•Trip detection
● (9)	● (5)	◇	95	Outdoor unit	compressor motor control error	•Rotor position detection error (stoppage permanently)
● (9)	● (7)	◇	97	Outdoor unit	Outdoor unit fan motor 1 error	•Duty error
● (9)	● (9)	◇	99	Outdoor unit	4-way valve error	•4-way valve error
● (10)	● (1)	◇	A1	Refrigerant system	Discharge temperature 1 error	•Discharge temperature 1 error
● (10)	● (3)	◇	A3	Refrigerant system	Compressor temperature error	•Compressor 1 temperature error
● (10)	● (5)	◇	A5	Refrigerant system	Pressure error 2	•Low pressure error
● (13)	● (2)	◇	J2	Branch box	Unit flow divider error	•EEPROM access error •Equipment type information error •Serial communication error to outdoor unit •Branch units serial communication error •Serial communication error to indoor unit •Liquid pipe thermistor error •Gas pipe thermistor error •Expansion valve full closure operation error •Remote controller communication error •Branch unit error

•Display mode ● : 0.5s ON / 0.5s OFF, () : Number of flashing ◇ : 0.1s ON / 0.1s OFF

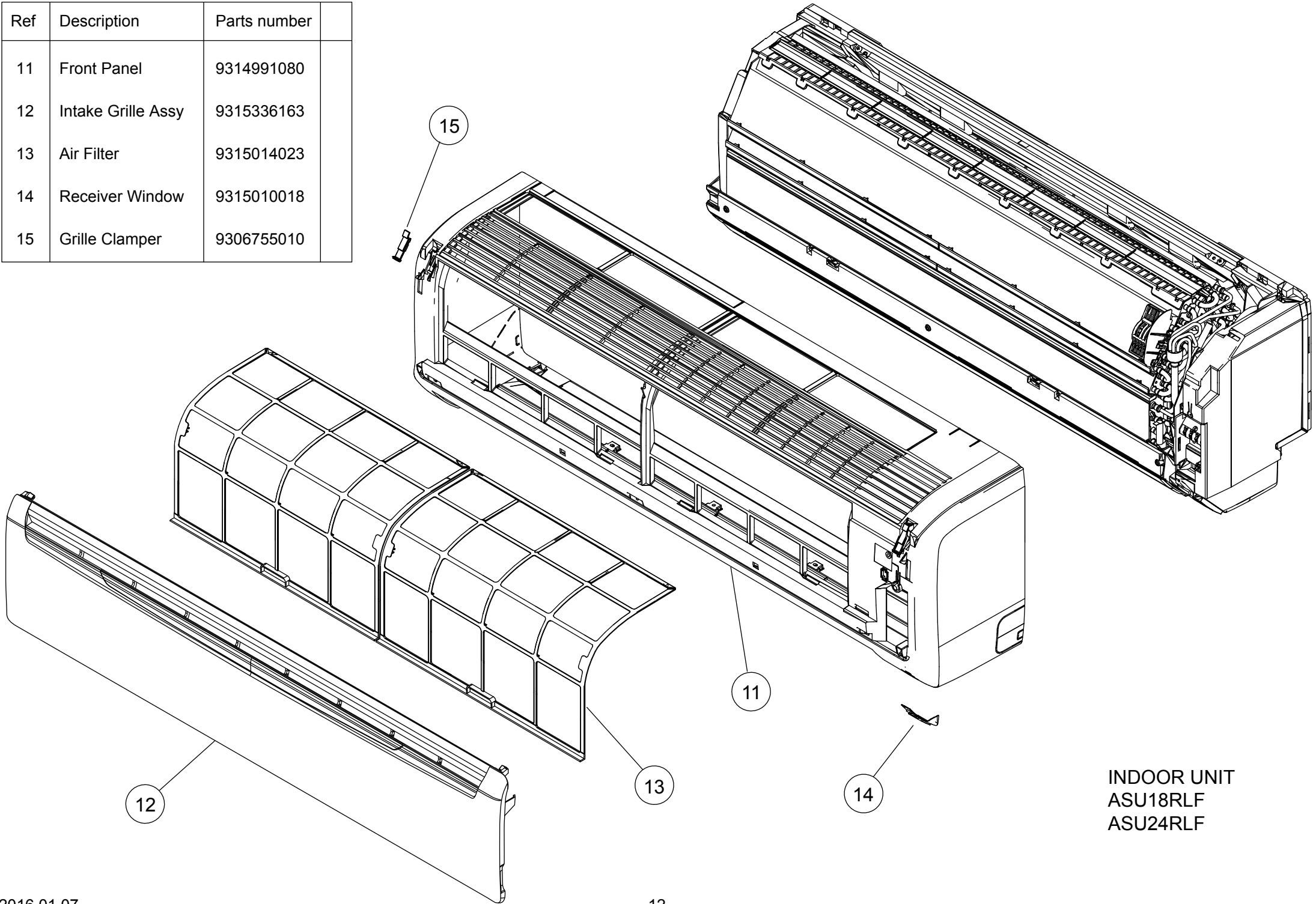
PARTS

INDOOR UNIT
ASU18RLF
ASU24RLF

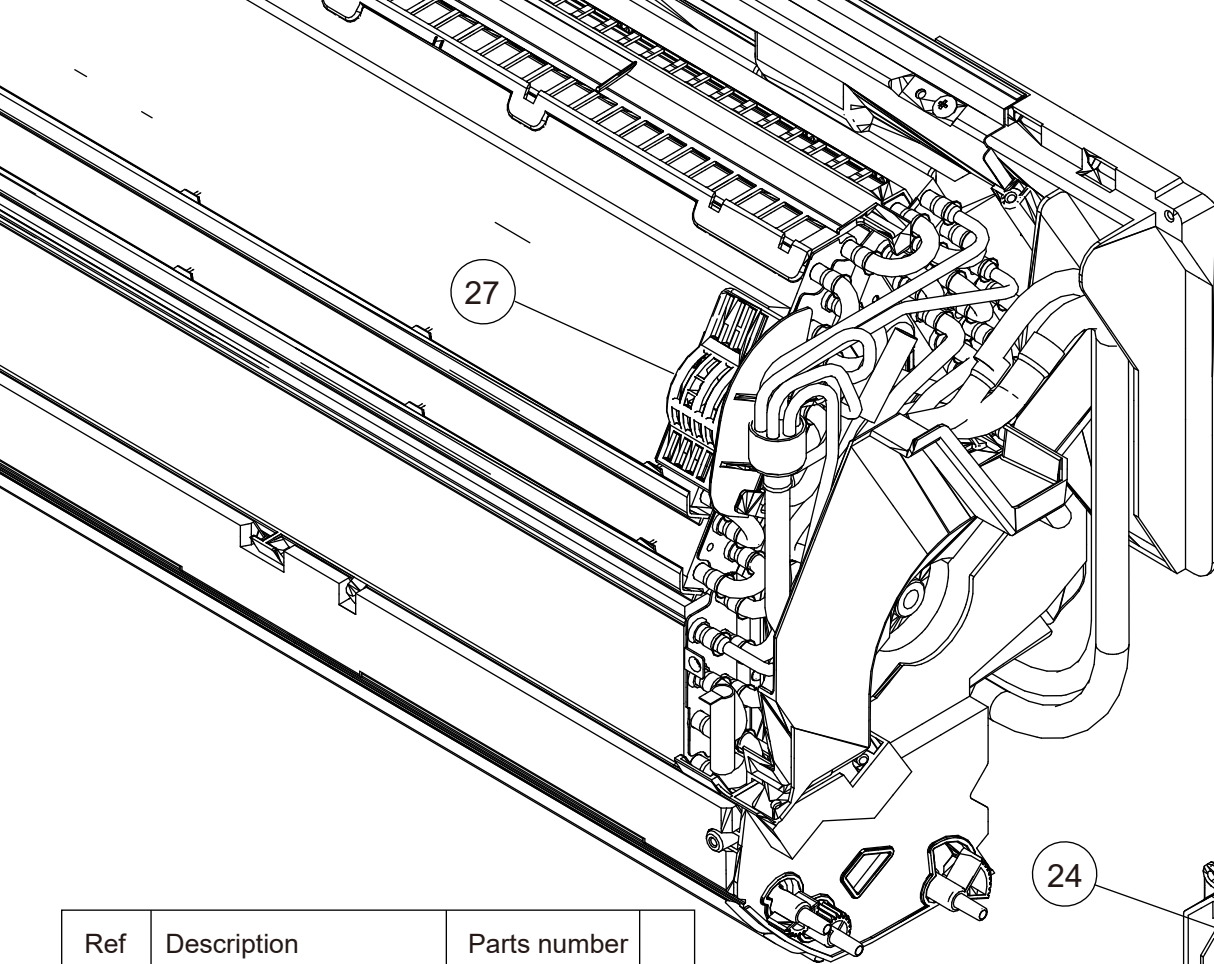


Ref	Description	Parts number	
1	Remote Control	9379219013	
2	Remote Control Holder	9305642045	
3	Bracket Panel	9315023018	
4	Air Clean Filter Assy	9315212016	
5	Screw Cap	9309002074	
6	Wire Clamper	9315015013	

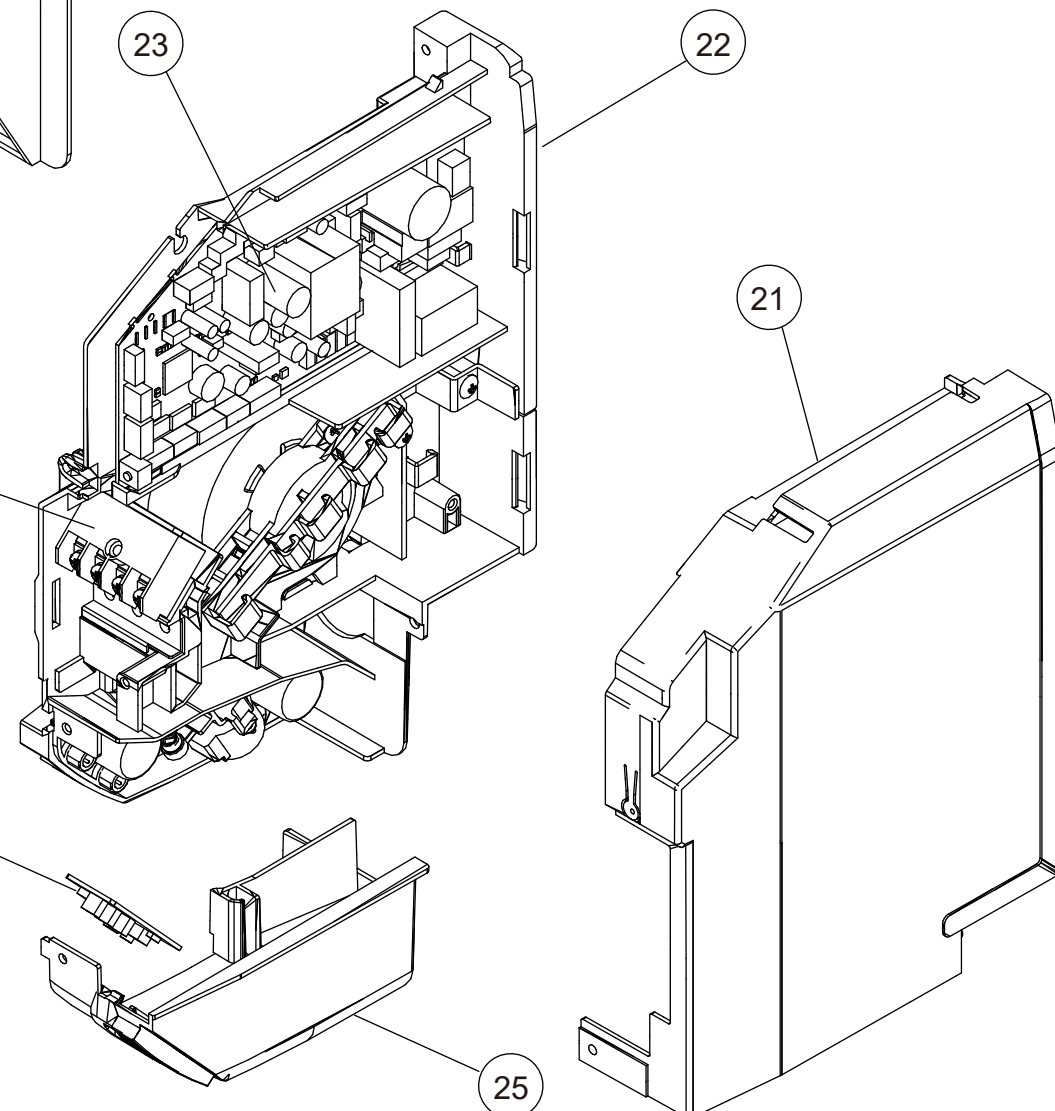
Ref	Description	Parts number	
11	Front Panel	9314991080	
12	Intake Grille Assy	9315336163	
13	Air Filter	9315014023	
14	Receiver Window	9315010018	
15	Grille Clamper	9306755010	



INDOOR UNIT
ASU18RLF
ASU24RLF

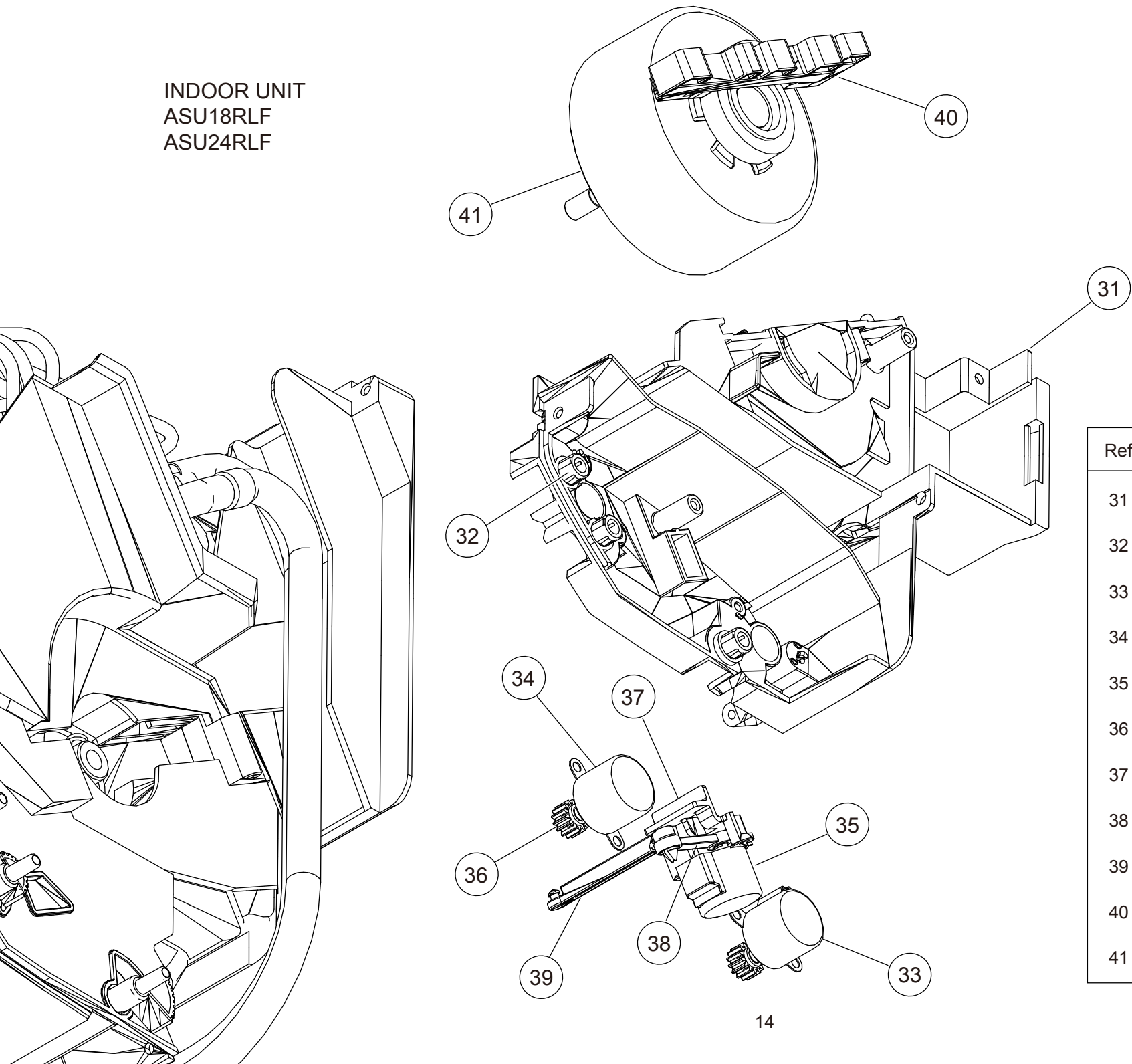


INDOOR UNIT
ASU18RLF
ASU24RLF

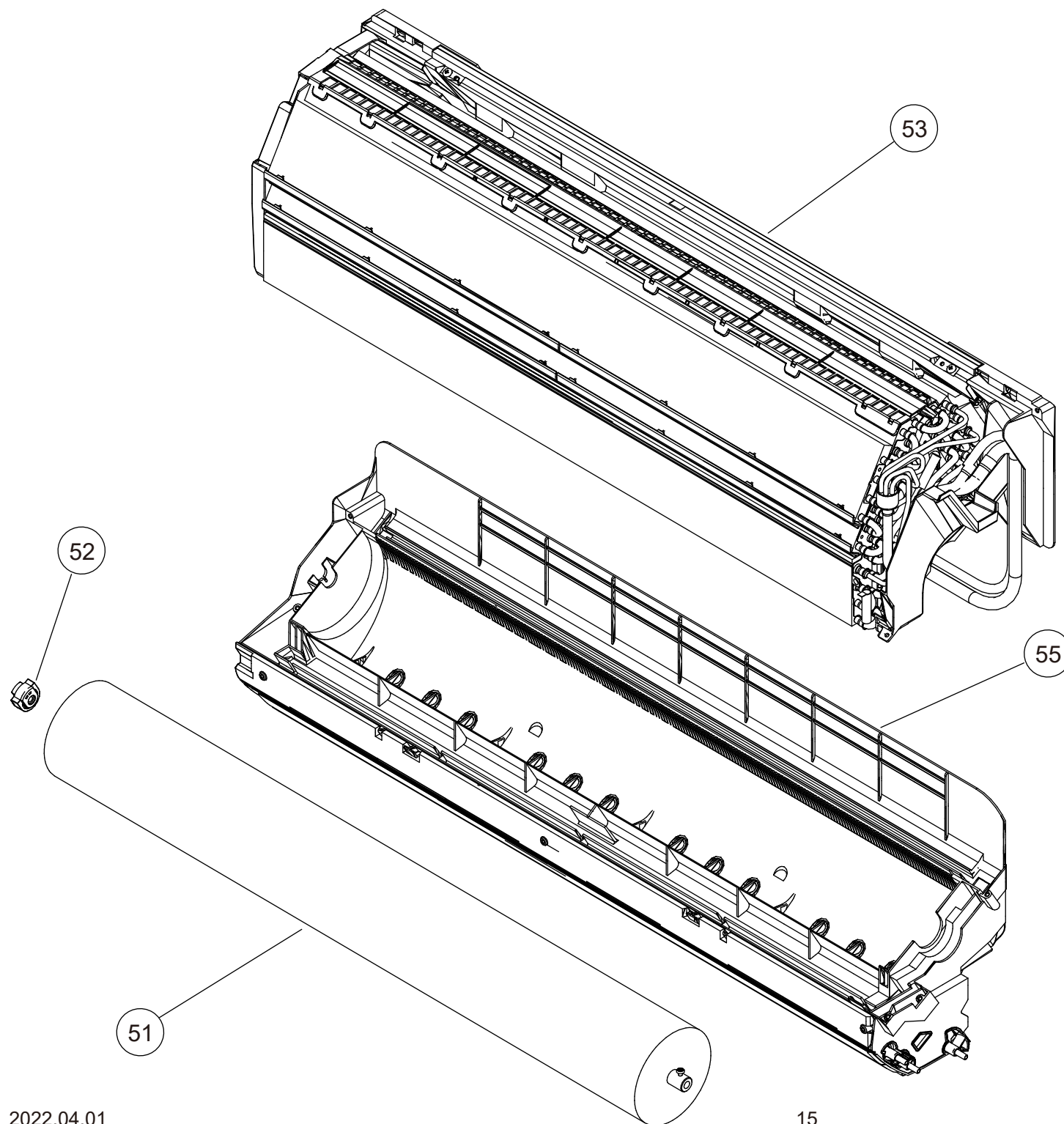


Ref	Description	Parts number	
21	Control Cover	9314997020	
22	Control Box	9314996023	
23	Main PCB (ASU18RLF)	9708540368	
23	Main PCB (ASU24RLF)	9708540375	
24	Terminal	9900447014	
---	Display Assy (Display case+PCB)	9707209051	
25	Display Case	9314999024	
26	Indicator PCB	9707210057	
27	Room Thermistor Holder	9315252012	

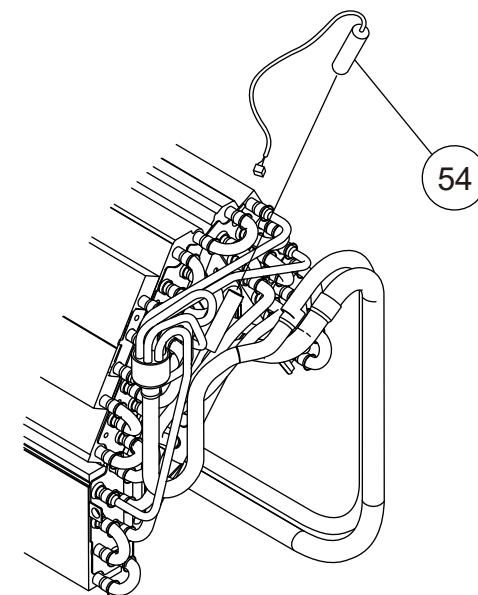
INDOOR UNIT
ASU18RLF
ASU24RLF



Ref	Description	Parts number	
31	Motor Case	9314998027	
32	Bush B	9312156016	
33	Motor Step (Red)	9900384029	
34	Motor Step (Green)	9900384036	
35	Motor Step (Blue)	9900139063	
36	Gear A	9309994003	
37	Link Holder	9315007018	
38	Link A	9315008015	
39	Joint A	9315005014	
40	Motor Clamper	9315012012	
41	Fan Motor	9602784004	

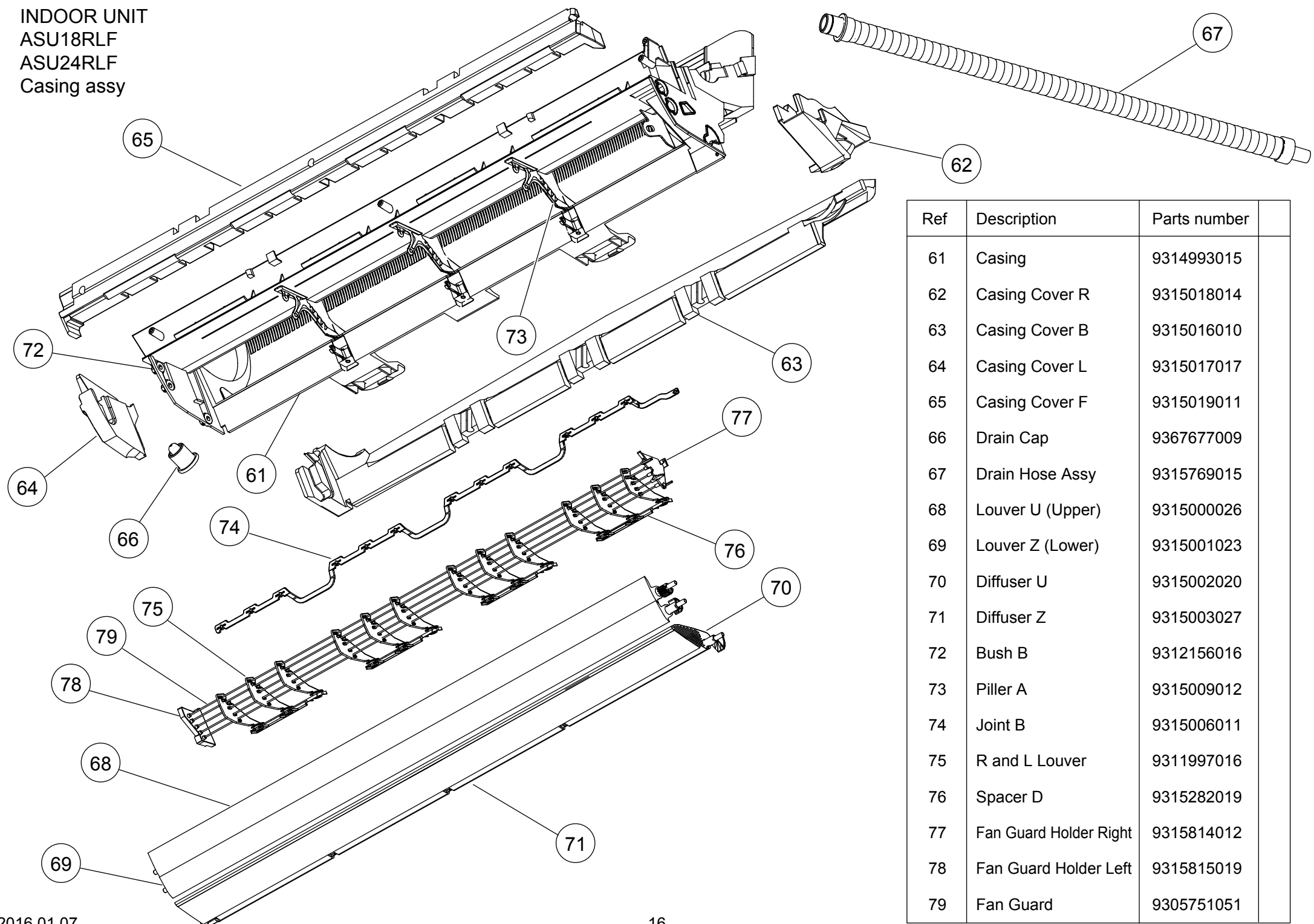


INDOOR UNIT ASU18RLF ASU24RLF

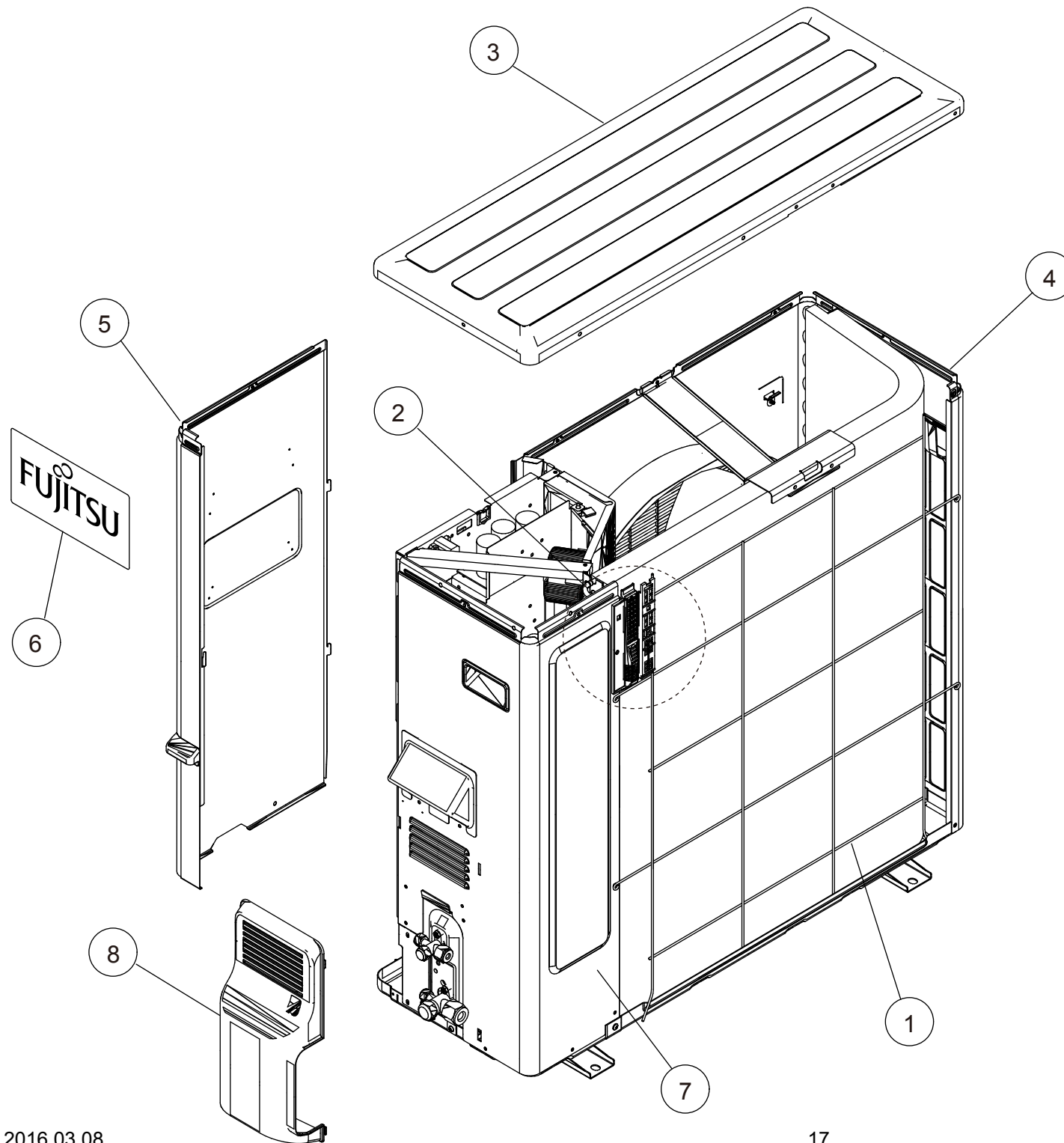


Ref	Description	Parts number	
51	Crossflow Fan Assy	9315024015	
52	Bearing C Assy	9306628017	
53	Evaporator Total Assy (18)	9315338556	
53	Evaporator Total Assy (24)	9315338570	
54	Pipe Thermistor	9900551018	
55	Casing Assy	9315331045	

INDOOR UNIT
ASU18RLF
ASU24RLF
Casing assy



Ref	Description	Parts number	
61	Casing	9314993015	
62	Casing Cover R	9315018014	
63	Casing Cover B	9315016010	
64	Casing Cover L	9315017017	
65	Casing Cover F	9315019011	
66	Drain Cap	9367677009	
67	Drain Hose Assy	9315769015	
68	Louver U (Upper)	9315000026	
69	Louver Z (Lower)	9315001023	
70	Diffuser U	9315002020	
71	Diffuser Z	9315003027	
72	Bush B	9312156016	
73	Pillar A	9315009012	
74	Joint B	9315006011	
75	R and L Louver	9311997016	
76	Spacer D	9315282019	
77	Fan Guard Holder Right	9315814012	
78	Fan Guard Holder Left	9315815019	
79	Fan Guard	9305751051	

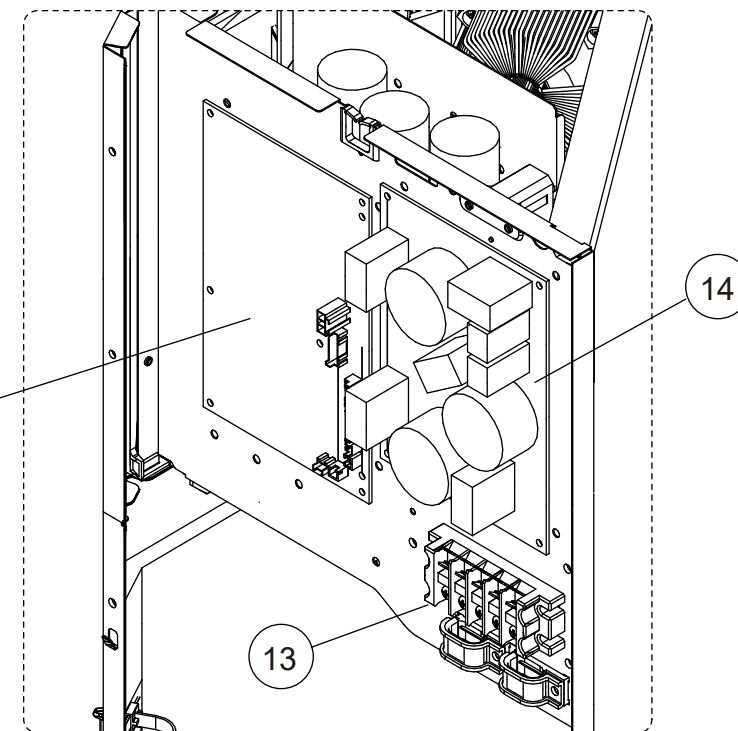
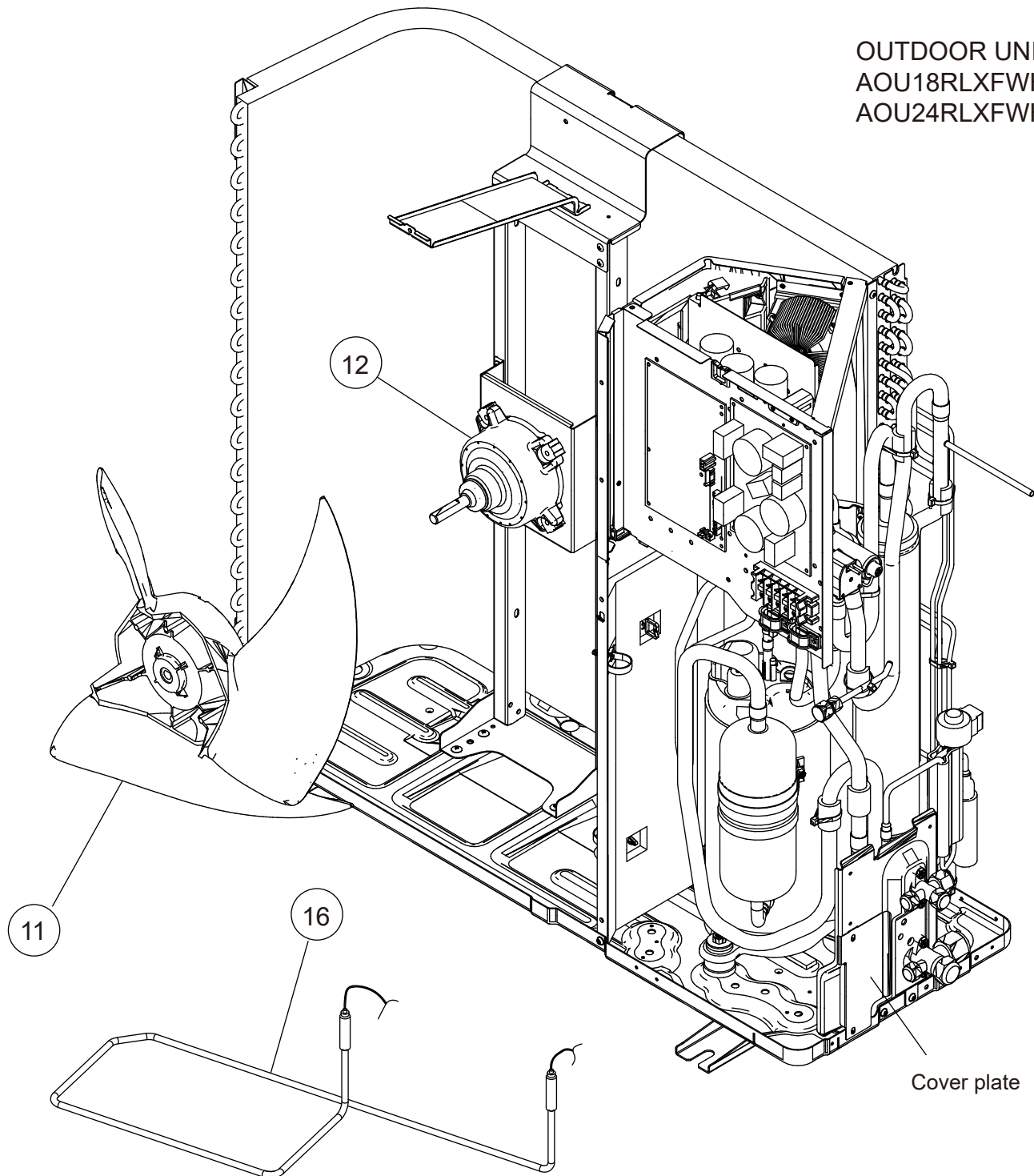


PARTS

OUTDOOR UNIT
AOU18RLXFWH
AOU24RLXFWH

Ref.	Description	Part number	
1	Protective Net	9375381011	
2	Thermo Holder	9375211011	
3	Top Panel Sub Assy	9374417032	
4	Front Panel Sub Assy	9374414079	
5	Service Panel Sub Assy	9374415052	
6	Emblem Rear	9351355005	
7	Right Panel Sub Assy	9374416134	
8	Valve Cover	9374174010	

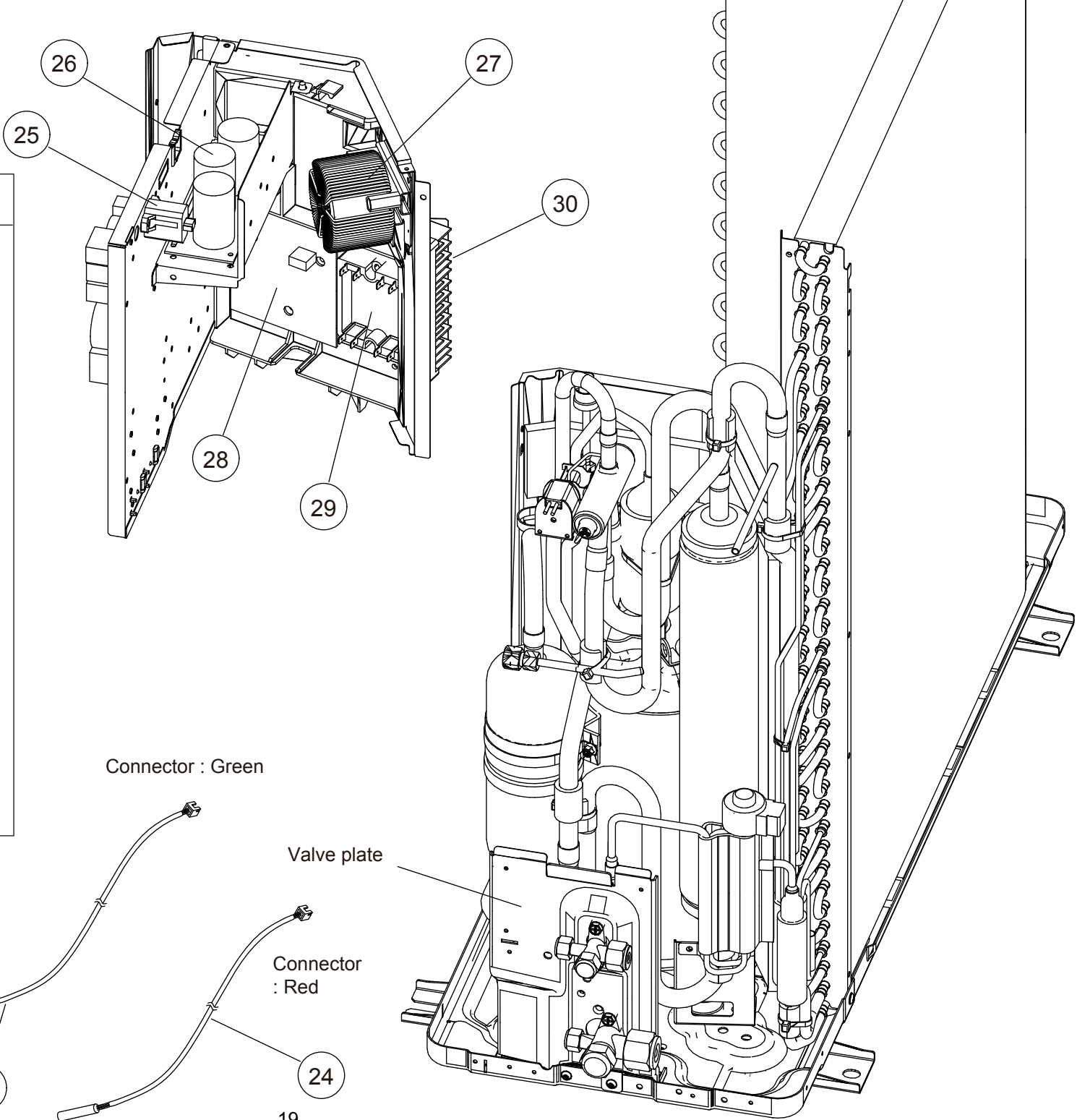
OUTDOOR UNIT
AOU18RLXFWH
AOU24RLXFWH



Ref.	Description	Part number
11	Propeller Fan Assy	9366378020 9366378037
12	DC Fan Motor (Service unit)	9379385015
13	Terminal	9900203023
14	Filter PCB (AOU18RLXFWH)	9708513065
14	Filter PCB (AOU24RLXFWH)	9708513072
15	Main PCB (AOU18RLXFWH)	9708511764
15	Main PCB (AOU24RLXFWH)	9708511771
16	Heater Unit Assy	9900888015

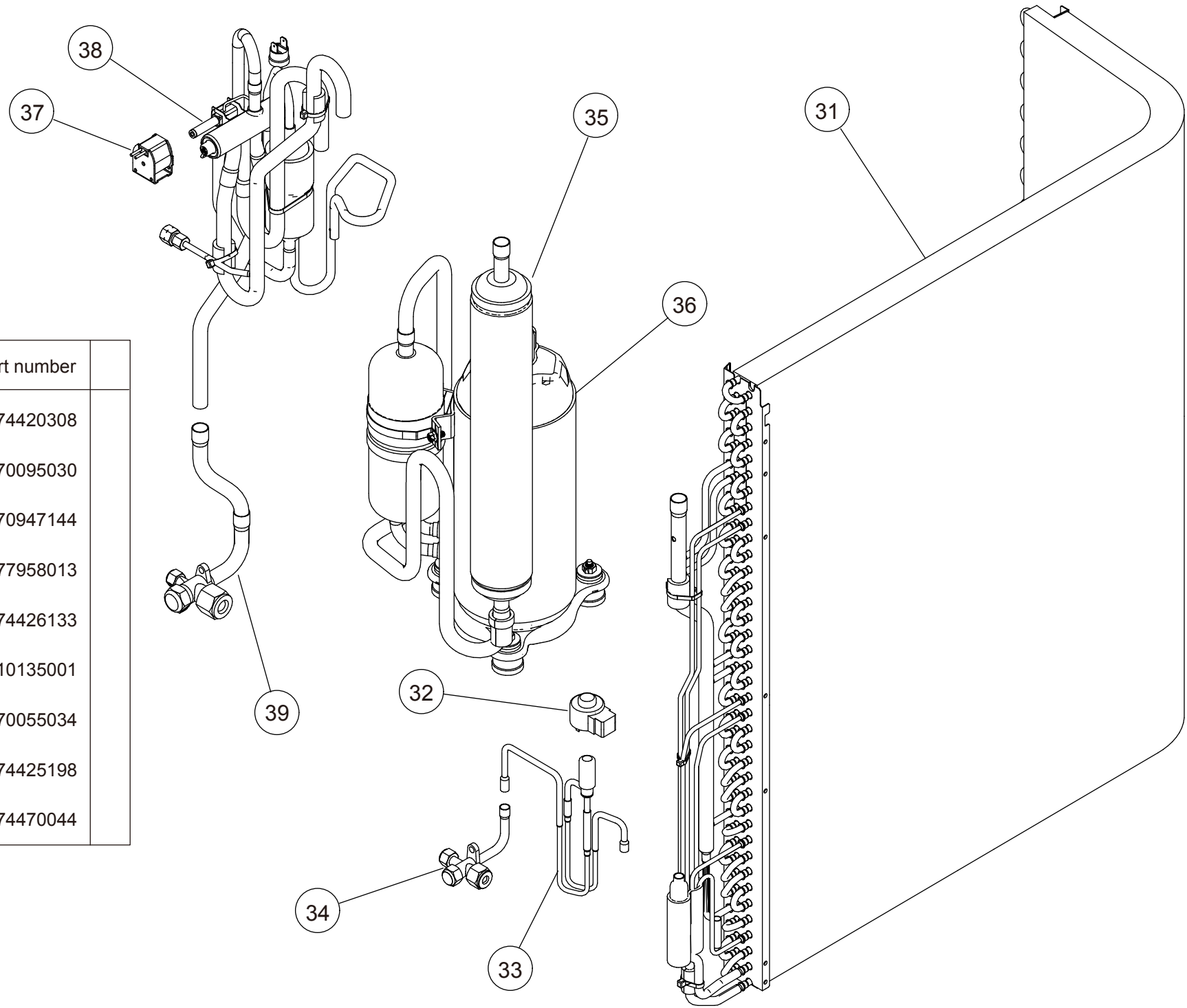
OUTDOOR UNIT
AOU18RLXFWH
AOU24RLXFWH

Ref.	Description	Part number
21	Discharge Thermistor	9900461003
22	Outdoor Thermistor	9900463007
23	Compressor Thermistor	9900466015
24	Heat Exchanger Thermistor	9900514013
25	PTC Thermistor (AOU24)	9704265012
26	Capacitor PCB (AOU18)	9709894033
26	Capacitor PCB (AOU24)	9709894040
27	Choke Coil	9900223014
28	Transistor PCB (AOU18)(SV)	9709681213
28	Transistor PCB (AOU24)(SV)	9709681220
29	ACTPM	9707592016
30	Heatsink	9378530010



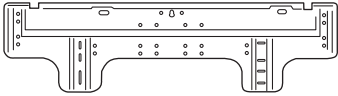
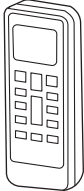
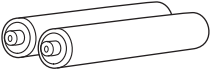
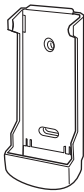

OUTDOOR UNIT
AOU18RLXFWH
AOU24RLXFWH

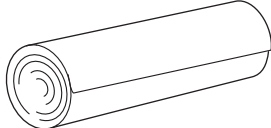


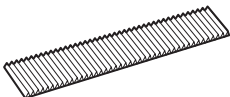
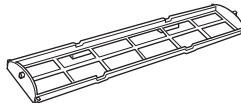
Ref.	Description	Part number	
31	Condenser A Sub Assy	9374420308	
32	Expansion Valve Coil	9970095030	
33	Expansion Valve Assy	9370947144	
34	3-way Valve Assy	9377958013	
35	Accumulator Sub Assy	9374426133	
36	Compressor	9810135001	
37	Solenoid	9970055034	
38	4-way Valve Assy	9374425198	
39	3-way Valve Sub Assy	9374470044	



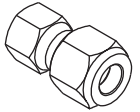
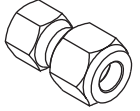
ACCESSORIES

INDOOR UNIT

<p>Wall hook bracket 9315023018 1 piece</p> 
<p>Remote control 9379219013 1 piece</p> 
<p>Battery (penlight) 0600185541 2 pieces shrink pack</p> 
<p>Remote control holder 9305642045 1 piece</p> 
<p>Drain hose insulation 9361756007 1 piece</p> 

<p>Cloth tape 9310519004 1 piece</p> 
<p>Tapping screw (big) M4x 25mm 0700076046 8 pieces</p> 
<p>Tapping screw (small) 0700019036 2 pieces</p> 
<p>Air cleaning filter Electric filter 9312153060 Ion deodorant filter 9311925071</p> 
<p>Air cleaning filter frame 9368568009 2 pieces</p> 

OUTDOOR UNIT

<p>Adapter G assy 1/2 in. (12.70 mm) -> 5/8 in. (15.88 mm) 9374749034 1 piece</p>  <p>(AOU18RLXFW1 only)</p>
<p>Adapter E assy 1/4 in. (6.35 mm) -> 3/8 in. (9.52 mm) 9374749010 1 piece</p> 

Adapter is necessary in the connection of the indoor unit. For more information, refer to the installation manual included with the indoor unit.

1602G4497