

Inverter Driven Heat Pump

18K BTU Single Zone Wall Mounted System

Job Name _____
 Location _____
 Engineer _____
 Submitted To _____
 Submitted By _____
 Reference _____

Date _____
 Approval _____
 Construction _____
 Unit No _____
 Drawing No _____

PRODUCT FEATURES

Auto Changeover
 24 Hour Timer
 Auto Louver: 4 way
 Minimum Heat Mode
 Quiet Mode
 Auto Restart
 Economy Mode
 Auto Fan



MODEL NUMBERS

| | |
|--------------|----------|
| Indoor Unit | ASU18RLB |
| Outdoor Unit | AOU18RLB |
| System | 18RLB |

EFFICIENCIES

| | |
|--------|------|
| SEER | 19.0 |
| EER | 12.5 |
| HSPF | 10.6 |
| COP | 4.11 |
| kW/kW | 14.0 |
| Btu/hW | 14.0 |

OUTDOOR TEMPERATURE OPERATION RANGE

| | | |
|---------|--------|-----------------------|
| Cooling | *F(°C) | 14 to 115 (-10 to 46) |
| Heating | | 5 to 75 (-15 to 24) |

CAPACITIES

| | | | |
|---------|-----------|--------|--------------|
| Cooling | Rated | BTU/hW | 18,000 |
| | Min.-Max. | | 3100 - 19000 |
| Heating | Rated | | 18,000 |
| | Min.-Max. | | 7000 - 20000 |

LINESET REQUIREMENTS

| Connection Method | | Flare |
|-------------------|---------|-----------------|
| Liquid | in (mm) | Ø 1/4 (Ø 6.35) |
| Gas | | Ø 1/2 (Ø 12.70) |
| Pre-Charge Length | ft (m) | 49 (15) |
| Minimum Length | | 10 (3) |
| Maximum Length | | 66 (20) |
| Max. Height Diff. | | 49 (15) |

INDOOR DIMENSIONS & WEIGHT

| | | |
|-------------------|---------|-------------------------------|
| Net (H x W x D) | in | 320 x 998 x 228 |
| | mm | 12-10/16 x 39-5/16 x 9 |
| Gross (H x W x D) | in | 319 x 1090 x 429 |
| | mm | 12-9/16 x 42-15/16 x 16-14/16 |
| Net Weight | lb (kg) | 31 (14) |
| Gross Weight | | 40 (18) |

OUTDOOR DIMENSIONS & WEIGHT

| | | |
|-------------------|---------|-----------------------------------|
| Net (H x W x D) | in | 24 - 7/16 x 31 - 2/16 x 11 - 7/16 |
| | mm | 620 x 790 x 290 |
| Gross (H x W x D) | in | 28 - 1/16 x 37-3/16 x 15 - 9/16 |
| | mm | 713 x 945 x 395 |
| Net Weight | lb (kg) | 86 (39) |
| Gross Weight | | 93 (42) |



Indoor Unit ETL#: 3170288
 Outdoor Unit ETL#: 91987

Warranty Information



7 Year Compressor, 5 Year Parts out-of-the-box Warranty



10 Year Compressor, 10 Year Parts Warranty when registered within 60 days of installation in a residence



12 Year Compressor, 12 Year Parts Warranty when registered within 60 days of installation in a residence, and installed by a Fujitsu Elite contractor

ACCESSORIES

| | |
|----------------|--------------------------------|
| UTY-TTRX | 3rd Party Thermostat Converter |
| FJ-IR-WIFI-1NA | Intesis WiFi IR Module |
| FJ-RC-WIFI-1NA | Intesis WiFi Wired Module |
| UTY-TFNXZ2 | WiFi Interface Module |
| UTY-RNNUM | Wired Remote |
| UTY-RVNUM | Wired Remote w/backlight |
| UTY-RSNUM | Simple Remote |
| UTY-XWZX | Dry Contact Wire Kit |



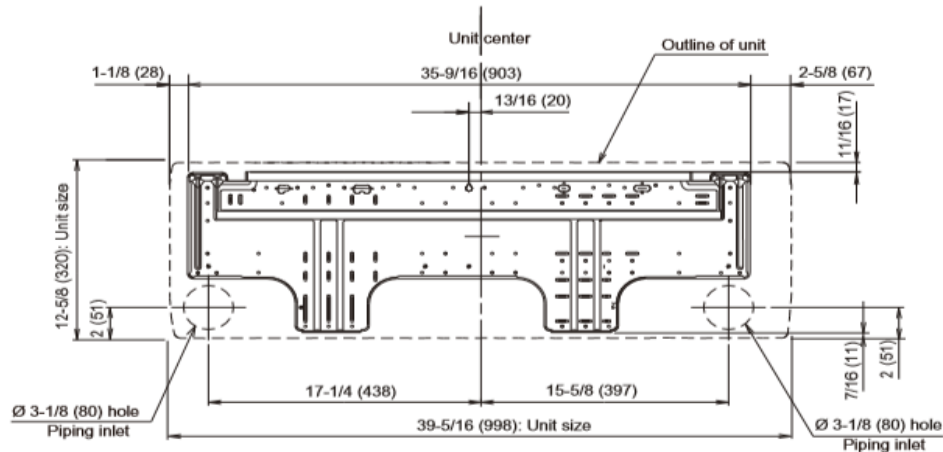
This system combination is Energy Star qualified

18K BTU Single Zone Wall

18K BTU Single Zone Wall Mounted System

| FAN DATA | | | | | ELECTRICAL SPECIFICATIONS | | | | | |
|---------------------------|---------|--------|---------------|---------------|---------------------------|-----------|---------------------|------------------------------|--------|--|
| Indoor Unit Airflow Rate | Cooling | High | CFM (m3/h) | 541 (920) | Voltage/Frequency/Phase | | | 208/230V ~ 60Hz | | |
| | | Medium | | 435 (740) | Voltage Range | | | 187-253V | | |
| | | Low | | 365 (620) | Current | Cooling | Rated | A | 6.4 | |
| | | Quiet | | 306 (520) | | Heating | Rated | | 5.8 | |
| | Heating | High | | 541 (920) | Maximum Operating Current | | Cooling | | 8.3 | |
| | | Medium | | 435 (740) | | | Heating | | 11.8 | |
| | | Low | | 365 (620) | Starting Current | | 6.4 | | | |
| | | Quiet | | 318 (540) | MCA | | 14.6 | | | |
| Outdoor Unit Airflow Rate | Cooling | | | 1,206 (2,050) | Maximum Circuit Breaker | | | | 15 | |
| Heating | | | 1,083 (1,840) | Input Power | Cooling | Rated | kW | 1.44 | | |
| | | | | | | Min.—Max. | | 1.63 | | |
| Indoor Unit | Cooling | High | dB (A) | | 42 | Heating | | Rated | 1.285 | |
| | | Medium | | | 35 | | | Min.—Max. | 2.06 | |
| | | Low | | 31 | Power Factor | Cooling | | % | 98 | |
| | | Quiet | | 26 | | Heating | | | 96 | |
| | Heating | High | | 43 | OTHER | | | | | |
| | | Medium | | 36 | Moisture Removal | | pints/h (L/h) | | 1.9(4) | |
| | | Low | | 33 | Energy Star | | | | YES | |
| | | Quiet | | 28 | Drain hose | Material | | | PVC | |
| Outdoor Unit | Cooling | | | 51 | Operation Range | Size | in (mm) | Ø 15/32 (12) (I.D.), 5/8(16) | | |
| Heating | | | 50 | Cooling | | °F (°C) | 64 to 90 (18 to 32) | | | |
| | | | | | | | %RH | 80 or less | | |
| | | | | | | Heating | °F (°C) | 88 (30) or less | | |
| SOUND PRESSURE | | | | | | | | | | |
| Indoor Unit | Cooling | High | dB (A) | 42 | | | | | | |
| | | Medium | | 35 | | | | | | |
| | | Low | | 31 | | | | | | |
| | | Quiet | | 26 | | | | | | |
| | Heating | High | | 43 | | | | | | |
| | | Medium | | 36 | | | | | | |
| | | Low | | 33 | | | | | | |
| | | Quiet | | 28 | | | | | | |
| Outdoor Unit | Cooling | | | 51 | | | | | | |
| Heating | | | 50 | | | | | | | |
| REFRIGERANT | | | | | | | | | | |
| Type | | | | R410A | | | | | | |
| Charge | lb oz | | | | 3lbs. 1 oz | | | | | |
| | kg | | | | 1 | | | | | |
| Oil Type | | | | | POE (RB68) | | | | | |

Wall Bracket Data:



The Fujitsu logo is a worldwide trademark of Fujitsu General Limited. The Halcyon logo and name is a worldwide trademark of Fujitsu General America, Inc. Fujitsu's products are subject to continuous improvements. Fujitsu reserves the right to modify product design, specifications and information in this brochure without notice and without incurring any obligations.

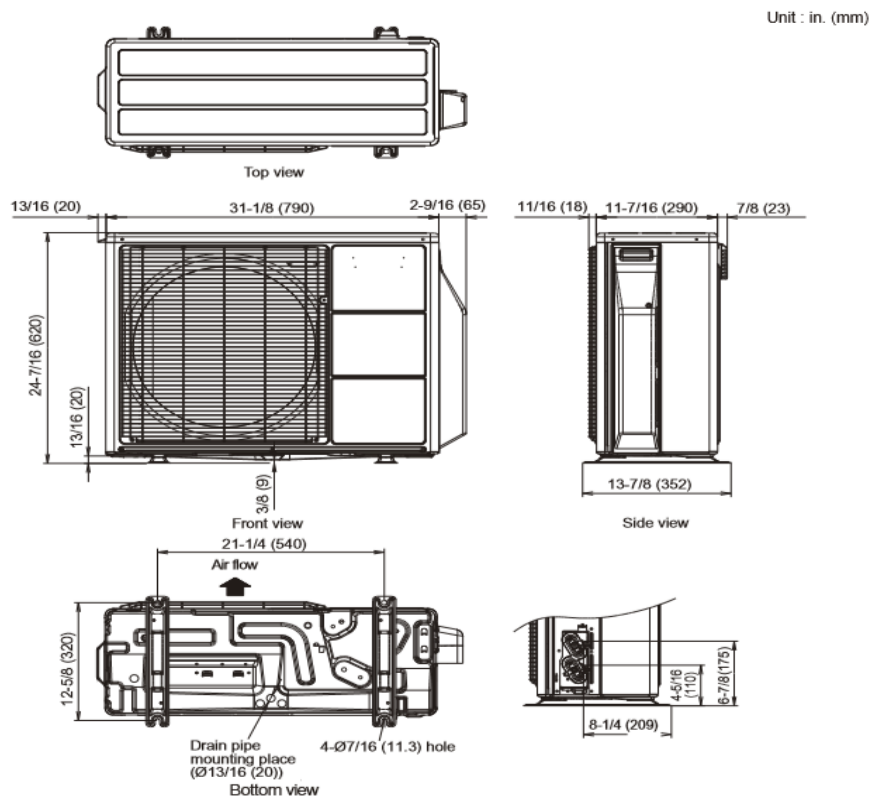
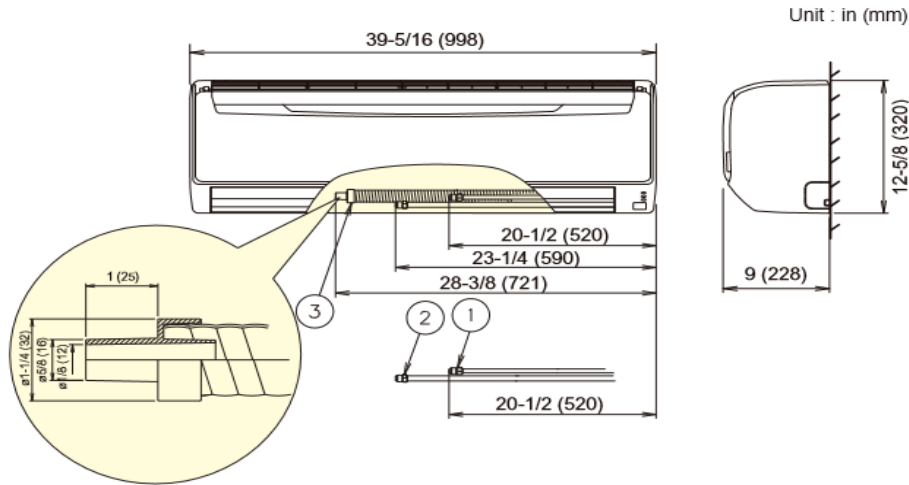
Note: Specifications are based on the following conditions:
Cooling: Indoor temperature of 80°F (26.7°C) DB/67°F (19.4°C) WB, and outdoor temperature of 95°F (35°C) DB/75°F (23.9°C) WB. Heating: Indoor temperature of 70°F (21.1°C) DB/60°F (15.6°C) WB, and outdoor temperature of 47°F (8.3°C) DB/43°F (6.1°C) WB. Pipe length: 25ft. (7.5m), Height difference: 0ft. (0m) (Outdoor unit - indoor unit).

18K BTU Single Zone Wall

18K BTU Single Zone Wall Mounted System

DIMENSIONS

Units: In. (mm)



The Fujitsu logo is a worldwide trademark of Fujitsu General Limited. The Halcyon logo and name is a worldwide trademark of Fujitsu General Limited and is a registered trademark in Japan, the USA and other countries or areas. Copyright 2018 Fujitsu General America, Inc. Fujitsu's products are subject to continuous improvements. Fujitsu reserves the right to modify product design, specifications and information in this brochure without notice and without incurring any obligations.

Note: Specifications are based on the following conditions:
 Cooling: Indoor temperature of 80°F (26.7°C) DB/67°F (19.4°C) WB, and outdoor temperature of 95°F (35°C) DB/75°F (23.9°C) WB. Heating: Indoor temperature of 70°F (21.1°C) DB/60°F (15.6°C) WB, and outdoor temperature of 47°F (8.3°C) DB/43°F (6.1°C) WB. Pipe length: 25ft. (7.5m), Height difference: 0ft. (0m) (Outdoor unit - indoor unit).