

## Inverter Driven Heat Pump

## 36,000 BTU Single Zone Wall Mounted System

Job Name \_\_\_\_\_  
 Location \_\_\_\_\_  
 Engineer \_\_\_\_\_  
 Submitted To \_\_\_\_\_  
 Submitted By \_\_\_\_\_  
 Reference \_\_\_\_\_

Date \_\_\_\_\_  
 Approval \_\_\_\_\_  
 Construction \_\_\_\_\_  
 Unit No \_\_\_\_\_  
 Drawing No \_\_\_\_\_

### PRODUCT FEATURES

Auto Changeover  
 Weekly & 24 hr. Timer  
 Auto Louver: Up/Down  
 Minimum Heat Mode (Wi-Fi Adapter required)  
 Wireless Remote Control Included  
 Auto Restart  
 Economy Mode



MODEL NUMBERS			
Indoor Unit		ASUH36LPAS	
Outdoor Unit		AOUH36LPAS1	
System		36LPAS1	
EFFICIENCIES			
SEER		18	
SEER 2		18	
EER		8.1	
EER 2		8.1	
HSPF		11	
HSPF 2 (IV) / HSPF 2 (V)		9.6/7.3	
COP	kW/kW		3.22
COP	Btu/hW		11
COP2	kW/kW		3.22
COP2	Btu/hW		11
OUTDOOR TEMPERATURE OPERATION RANGE			
Cooling	*F(°C)	14 to 115 (-10 to 46)	
Heating*		*5 to 75 (-15 to 24)	
CAPACITIES			
Cooling	Rated	Btu/h	33000
	Min.—Max.		9,900—34,100
Heating	Rated		34000
	Min.—Max.		8,700—35,000
LINESET REQUIREMENTS			
Connection Method		Flare	
Liquid	in (mm)	Ø3/8 (Ø9.52)	
Gas		Ø5/8 (Ø15.88)	
Pre-charge length	ft (m)	66 (20)	
Minimum Length		16 (5)	
Max. length		164 (50)	
Max. height difference		98 (30)	
INDOOR DIMENSIONS & WEIGHT			
Net (H × W × D)	in (mm)	13-3/8 × 45-1/4 × 11 (340 × 1,150 × 280)	
Gross (H × W × D)		15-15/16 × 50 × 17-11/16 (405 × 1,270 × 450)	
Net Weight	lb (kg)	39 (17.5)	
Gross Weight		51 (23.0)	
OUTDOOR DIMENSIONS & WEIGHT			
Net (H × W × D)	in (mm)	31 × 37 × 12-5/8 (788 × 940 × 320)	
Gross (H × W × D)		38-1/16 × 40-7/16 × 17-1/2 (966 × 1,027 × 445)	
Net Weight	lb (kg)	117 (53)	
Gross Weight		134 (61)	

\* System continues to operate below rated outdoor operation temperature range, subject to varying conditions. System has no low temperature cut out. Capacity is not tested outside of the rated temperature range.

### Warranty Information



7 Year Compressor, 5 Year Parts out-of-the-box Warranty



10 Year Compressor, 10 Year Parts Warranty when registered within 60 days of installation in a residence



12 Year Compressor, 12 Year Parts Warranty when registered within 60 days of installation in a residence, and installed by a Fujitsu Elite contractor

### ACCESSORIES

UTY-RNRUZ*	Wired remote controller
UTY-RSRY	Simple remote controller
UTY-RHRY	Simple remote controller
UTY-XWZX	External Connect Kit
UTY-XWZXZ5	External Connect Kit
UTY-XCSXZ2	External Input and Output PCB
UTY-TWRXZ2	Communication Kit
UTY-TFSXF1	Wireless LAN adapter
UTY-VMSX	Modbus Converter
UTY-TTRXZ1	24V Thermostat Converter
UTY-VTGX	Network Converter



This system combination is Energy Star qualified



+App available in Apple® App Store and Google® Play Store.

Due to continuous product improvements, specifications are subject to change without notice. Please log in to the Fujitsu Portal for the most up-to-date documentation <https://connect.fujitsugeneral.com>

Effective Date: 04/18/2024

Fujitsu General America, Inc. • 342 Changebridge Rd, Pine Brook, NJ 07058 • Toll Free: (888) 888-3424 • [www.fujitsugeneral.com](http://www.fujitsugeneral.com)

## Inverter Driven Heat Pump

## 36,000 BTU Single Zone Wall Mounted System

### FAN DATA

Indoor Unit Airflow rate	Cooling	HIGH	CFM (m3/h)	812 (1,380)
		MED		665 (1,130)
		LOW		536 (910)
		QUIET		418 (710)
	Heating	HIGH		812 (1,380)
		MED		665 (1,130)
		LOW		536 (910)
		QUIET		418 (710)
Outdoor Unit Airflow rate	Cooling			2,187 (3,715)
	Heating			2,187 (3,715)

### SOUND PRESSURE

Indoor Unit	Cooling	HIGH	dB (A)	50
		MED		45
		LOW		38
		QUIET		32
	Heating	HIGH		49
		MED		44
		LOW		38
		QUIET		32
Outdoor Unit	Cooling			53
	Heating			54

### REFRIGERANT

Type			R410A
Charge	lb oz	4 lb 10 oz	
	g	2100	
Oil Type			POE (RB68)

### ELECTRICAL SPECIFICATIONS

Voltage/Frequency/Phase		208/230 V ~ 60 Hz		
Available Voltage Range		187–253 V		
Current	Cooling	Rated	A	17.8
	Heating	Rated		13.5
Maximum Operating Current	Cooling			18.9
	Heating			18.9
Starting Current				17.8
MCA				23.4
Maximum Circuit Breaker				30
Input Power	Cooling	Rated	kW	4.08
		Min.–Max.		0.45–4.29
	Heating	Rated		3.09
		Min.–Max.		0.53–3.32
Power Factor	Cooling		%	99.7
	Heating			99.8

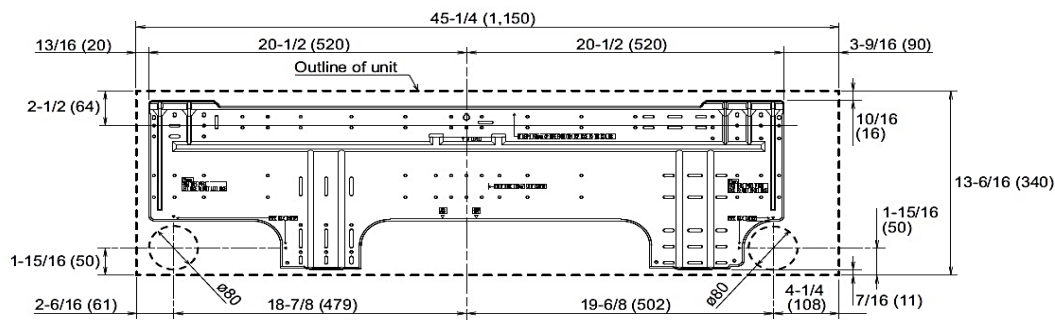
### OTHER

Moisture Removal		pints/h (L/h)	10.1 (4.8)
Energy Star			Yes
Drain hose	Material		PP+HDPE
	Tip diameter	in (mm)	Ø17/32 (Ø13.8) (I.D.), Ø19/32 to 21/32 (Ø15.0 to 16.8)
Operation Range	Cooling	°F (°C)	64 to 90 (18 to 32)
	Heating	%RH	80 or less
		°F (°C)	86 (30) or less

### DIMENSIONS:

Units: In. (mm)

### Wall Bracket Data:



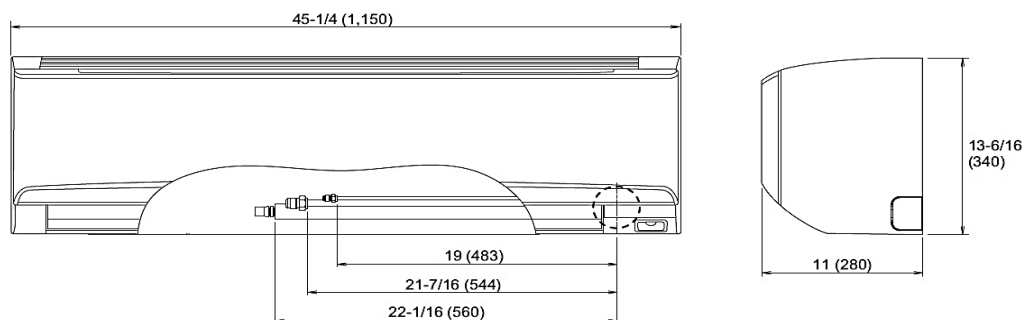
## Inverter Driven Heat Pump

## 36,000 BTU Single Zone Wall Mounted System

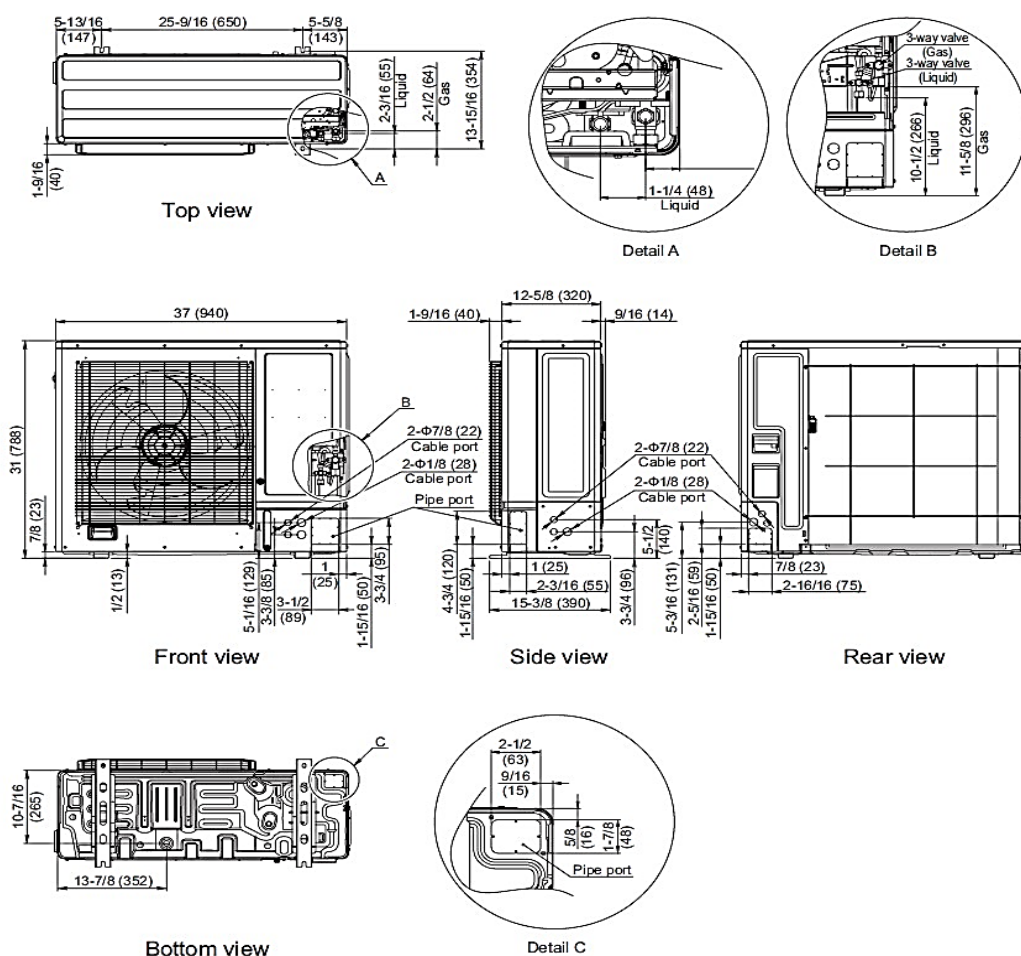
## DIMENSIONS

Units: In. (mm)

## Indoor Unit



## Outdoor Unit



The Fujitsu logo is a worldwide trademark of Fujitsu General Limited. The Airstage logo and name is a worldwide trademark of Fujitsu General Limited and is a registered trademark in Japan, the USA and other countries or areas. Copyright 2024 Fujitsu General America, Inc. Fujitsu's products are subject to continuous improvements. Fujitsu reserves the right to modify product design, specifications and information in this brochure without notice and without incurring any obligations.

Note: Specifications are based on the following conditions:  
Cooling: Indoor temperature of 80°F (26.7°C) DB/67°F (19.4°C) WB, and outdoor temperature of 95°F (35°C) DB/75°F (23.9°C) WB. Heating: Indoor temperature of 70°F (21.1°C) DB/60°F (15.6°C) WB, and outdoor temperature of 47°F (8.3°C) DB/43°F (6.1°C) WB. Pipe length: 25ft. (7.5m), Height difference: 0ft. (0m) (Outdoor unit – indoor unit).