

Inverter Driven Heat Pump

30,000 BTU Single Zone XLTH Wall Mounted System

Job Name _____
 Location _____
 Engineer _____
 Submitted To _____
 Submitted By _____
 Reference _____

Date _____
 Approval _____
 Construction _____
 Unit No _____
 Drawing No _____

PRODUCT FEATURES

Auto Changeover
 Weekly & 24 hr. Timer
 Auto Louver: Up/Down
 Minimum Heat Mode
 Wireless Remote Control Included
 Auto Restart
 -5F Low Ambient Cooling
 Auto Fan Mode
 Server Room Mode
 Base Pan Heater



MODEL NUMBERS

Indoor Unit	ASU30RLXEH
Outdoor Unit	AOU30RLXEH
System	30RLXEH

EFFICIENCIES

SEER	18.7
SEER 2	18.7
EER	12.5
EER 2	12.5
HSPF	11.8
HSPF 2 (IV) / HSPF 2 (V)	10/7.8
COP	kW/kW 3.42
COP	Btu/hW 11.7
COP2	kW/kW 3.42
COP2	Btu/hW 11.7

OUTDOOR TEMPERATURE OPERATION RANGE

Cooling	*F(°C)	-5 to 115 (-21 to 46)
Heating*		*-15 to 75 (-26 to 24)

CAPACITIES

Cooling	Rated	Btu/h	30000
	Min.-Max.		9,900-32,400
Heating	Rated		32000
	Min.-Max.		8,000-36,200

LINESET REQUIREMENTS

Connection Method		Flare
Liquid	in (mm)	Ø3/8 (Ø9.52)
Gas		Ø5/8 (Ø15.88)
Pre-charge length	ft (m)	66 (20)
Minimum Length		16 (5)
Max. length		246 (75)
Max. height difference		98 (30)

INDOOR DIMENSIONS & WEIGHT

Net (H x W x D)	in (mm)	13-6/16 x 45-4/16 x 11 (340 x 1,150 x 280)
Gross (H x W x D)		15-15/16 x 50 x 17-11/16 (405 x 1,270 x 450)
Net Weight	lb (kg)	40 (18)
Gross Weight		53 (24)

OUTDOOR DIMENSIONS & WEIGHT

Net (H x W x D)	in (mm)	50-13/16 x 35-7/16 x 13 (1,290 x 900 x 330)
Gross (H x W x D)		57-1/2 x 41-5/16 x 17-1/2 (1,460 x 1,050 x 445)
Net Weight	lb (kg)	205 (93)
Gross Weight		227 (103)

* System continues to operate below rated outdoor operation temperature range, subject to varying conditions. System has no low temperature cut out. Capacity is not tested outside of the rated temperature range.

Warranty Information



7 Year Compressor, 5 Year Parts out-of-the-box Warranty



10 Year Compressor, 10 Year Parts Warranty when registered within 60 days of installation in a residence



12 Year Compressor, 12 Year Parts Warranty when registered within 60 days of installation in a residence, and installed by a Fujitsu Elite contractor

ACCESSORIES

UTY-RNRUZ*	Wired Remote Controller
UTY-RVNUM	Wired Remote Controller
UTY-RNNUM	Wired Remote Controller
UTY-RSNUM	Simple Remote Controller
UTY-XWZX	External Connect Kit
UTY-XCSXZ1	External Input and Output PCB
UTZ-GXXB	External Input and Output PCB Box



This system combination is Energy Star qualified



+App available in Apple® App Store and Google® Play Store.

Due to continuous product improvements, specifications are subject to change without notice. Please log in to the Fujitsu Portal for the most up-to-date documentation <https://connect.fujitsugeneral.com>

Effective Date: 05/07/2024

Fujitsu General America, Inc. • 342 Changebridge Rd, Pine Brook, NJ 07058 • Toll Free: (888) 888-3424 • www.fujitsugeneral.com

Inverter Driven Heat Pump

30,000 BTU Single Zone XLTH Wall Mounted System

FAN DATA

Indoor Unit Airflow rate	Cooling	HIGH	CFM (m3/h)	812 (1,380)
		MED		665 (1,130)
		LOW		536 (910)
		QUIET		418 (710)
	Heating	HIGH		812 (1,380)
		MED		665 (1,130)
		LOW		536 (910)
		QUIET		418 (710)
Outdoor Unit Airflow rate	Cooling			4,032 (6,850)
	Heating			4,032 (6,850)

SOUND PRESSURE

Indoor Unit	Cooling	HIGH	dB (A)	50
		MED		45
		LOW		38
		QUIET		32
	Heating	HIGH		49
		MED		44
		LOW		38
		QUIET		32
Outdoor Unit	Cooling			53
	Heating			54

REFRIGERANT

Type	R410A	
Charge	lb oz	6 lb 12 oz
	g	3050
Oil Type	POE (VG74)	

ELECTRICAL SPECIFICATIONS

Voltage/Frequency/Phase		208/230 V ~ 60 Hz		
Available Voltage Range		187–253 V		
Current	Cooling	Rated	A	10.6
	Heating	Rated		12
Maximum Operating Current	Cooling			20.5
	Heating			20.5
Starting Current				18.7
MCA				25.6
Maximum Circuit Breaker				30
Input Power	Cooling	Rated	kW	2.4
		Min.–Max.		0.58–3.83
	Heating	Rated		2.74
		Min.–Max.		0.50–4.28
Power Factor	Cooling		%	99.6
	Heating			99.2

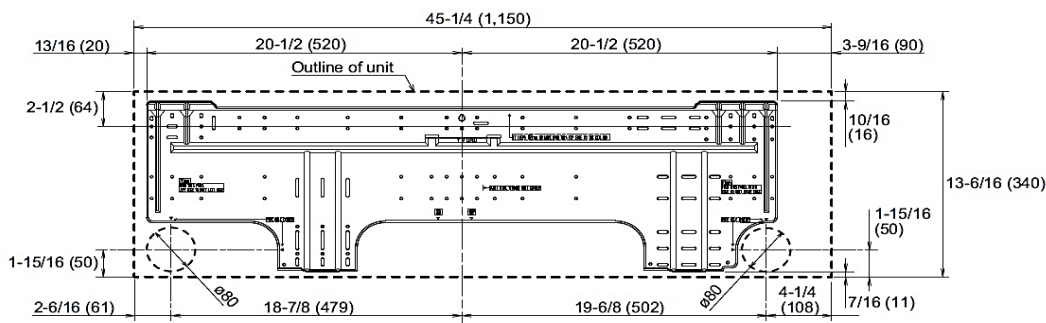
OTHER

Moisture Removal		pints/h (L/h)	9.7 (4.6)
Energy Star			Yes
Drain hose	Material		PP+HDPE
	Tip diameter	in (mm)	Ø17/32 (Ø13.8) (I.D.), Ø19/32 to Ø21/32 (Ø15.0 to Ø16.8) (O.D.)
Operation Range	Cooling	°F (°C)	64 to 90 (18 to 32)
		%RH	80 or less
	Heating	°F (°C)	86 (30) or less

DIMENSIONS:

Units: In. (mm)

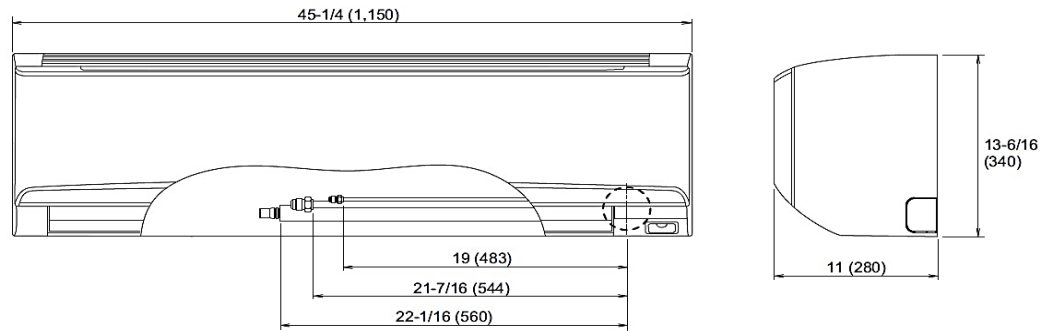
Wall Bracket Data:



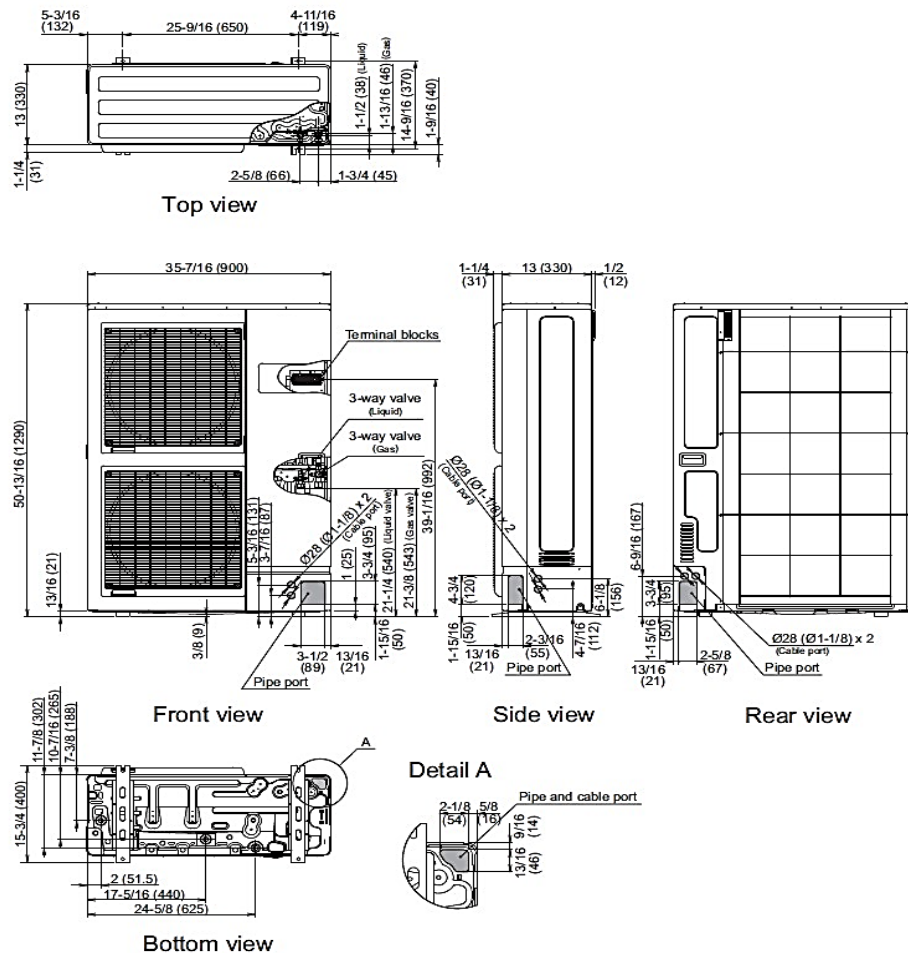
DIMENSIONS

Units: In. (mm)

Indoor Unit



Outdoor Unit



The Fujitsu logo is a worldwide trademark of Fujitsu General Limited. The Airstage logo and name is a worldwide trademark of Fujitsu General Limited and is a registered trademark in Japan, the USA and other countries or areas. Copyright 2022 Fujitsu General America, Inc. Fujitsu's products are subject to continuous improvements. Fujitsu reserves the right to modify product design, specifications and information in this brochure without notice and without incurring any obligations.

Note: Specifications are based on the following conditions:
 Cooling: Indoor temperature of 80°F (26.7°C) DB/67°F (19.4°C) WB, and outdoor temperature of 95°F (35°C) DB/75°F (23.9°C) WB. Heating: Indoor temperature of 70°F (21.1°C) DB/60°F (15.6°C) WB, and outdoor temperature of 47°F (8.3°C) DB/43°F (6.1°C) WB. Pipe length: 25ft. (7.5m), Height difference: 0ft. (0m) (Outdoor unit - indoor unit).