

## Inverter Driven Heat Pump

24,000 BTU Single Zone High SEER Wall Mounted

Job Name \_\_\_\_\_  
Location \_\_\_\_\_  
Engineer \_\_\_\_\_  
Submitted To \_\_\_\_\_  
Submitted By \_\_\_\_\_  
Reference \_\_\_\_\_

Date \_\_\_\_\_  
Approval \_\_\_\_\_  
Construction \_\_\_\_\_  
Unit No \_\_\_\_\_  
Drawing No \_\_\_\_\_

## PRODUCT FEATURES

Auto Changeover  
24 hr. Timer  
Auto Louver: Up/Down  
Minimum Heat Mode  
Wireless Remote Control Included  
Auto Restart  
Economy Mode  
Auto Fan Mode



MODEL NUMBERS	
Indoor Unit	ASUH24LMAS
Outdoor Unit	AOUH24LMAS1
System	24LMAS1

EFFICIENCIES	
SEER	22.5
SEER 2	22.5
EER	12.5
EER 2	12.5
HSPF	12
HSPF 2 (IV) / HSPF 2 (V)	11.4/8.9
COP	kW/kW 3.96
COP	Btu/hW 13.5
COP2	kW/kW 3.96
COP2	Btu/hW 13.5

OUTDOOR TEMPERATURE OPERATION RANGE	
Cooling	*F(*C) 14 to 115 (-10 to 46)
Heating*	*5 to 75 (-15 to 24)

CAPACITIES	
Cooling	Rated 22000
	Min.-Max. 9,100-27,300
Heating	Rated 25200
	Min.-Max. 8,200-37,000

LINESET REQUIREMENTS	
Connection Method	Flare
Liquid	in (mm) Ø3/8 (Ø9.52)
Gas	Ø5/8 (Ø15.88)
Pre-charge length	ft (m) 66 (20)
Minimum Length	16(5)
Max. length	164 (50)
Max. height difference	98 (30)

INDOOR DIMENSIONS & WEIGHT	
Net (H x W x D)	in (mm) 13-6/16 x 45-4/16 x 11 (340 x 1,150 x 280)
Gross (H x W x D)	15-15/16 x 50 x 17-11/16
Net Weight	lb (kg) 36 (16.5)
Gross Weight	49 (22.0)

OUTDOOR DIMENSIONS & WEIGHT	
Net (H x W x D)	in (mm) 31 x 37 x 12-5/8 (788 x 940 x 320)
Gross (H x W x D)	38-1/16 x 40-7/16 x 17-1/2 (966 x 1,027 x 445)
Net Weight	lb (kg) 117 (53)
Gross Weight	134 (61)

\* System continues to operate below rated outdoor operation temperature range, subject to varying conditions. System has no low temperature cut out. Capacity is not tested outside of the rated temperature range.

## Warranty Information



7 Year Compressor, 5 Year Parts out-of-the-box Warranty



10 Year Compressor, 10 Year Parts Warranty when registered within 60 days of installation in a residence



12 Year Compressor, 12 Year Parts Warranty when registered within 60 days of installation in a residence, and installed by a Fujitsu Elite contractor

## ACCESSORIES

UTY-RNRUZ*	Wired remote controller
UTY-RSRY	Simple remote controller
UTY-RHRY	Simple remote controller
UTY-XWZX	External Connect Kit
UTY-XWZXZ5	External Connect Kit
UTY-XCSXZ2	External Input and Output PCB
UTY-TWRXZ2	Communication Kit
UTY-TFSXF1	Wireless LAN adapter
UTY-VMSX	Modbus Converter
UTY-TTRXZ1	24V Thermostat Converter
UTY-VTGX	Network Converter



This system combination is Energy Star qualified



+App available in Apple® App Store and Google® Play Store.

Due to continuous product improvements, specifications are subject to change without notice. Please log in to the Fujitsu Portal for the most up-to-date documentation  
<https://connect.fujitsugeneral.com>

Effective Date: 05/07/2024

Fujitsu General America, Inc. • 342 Changebridge Rd, Pine Brook, NJ 07058 • Toll Free: (888) 888-3424 • [www.fujitsugeneral.com](http://www.fujitsugeneral.com)

## Inverter Driven Heat Pump

## 24,000 BTU Single Zone High SEER Wall Mounted

### FAN DATA

Indoor Unit Airflow rate	Cooling	HIGH	CFM (m3/h)	647 (1,100)
		MED		530 (900)
		LOW		436 (740)
		QUIET		371 (630)
	Heating	HIGH		730 (1,240)
		MED		530 (900)
		LOW		436 (740)
		QUIET		371 (630)
Outdoor Unit Airflow rate	Cooling			1,936 (3,290)
	Heating			2,187 (3,715)

### SOUND PRESSURE

Indoor Unit	Cooling	HIGH	dB (A)	46
		MED		42
		LOW		37
		QUIET		33
	Heating	HIGH		48
		MED		38
		LOW		34
		QUIET		30
Outdoor Unit	Cooling			52
	Heating			54

### REFRIGERANT

Type	R410A	
Charge	lb oz	4 lb 10 oz
	g	2100
Oil Type	POE (RB68)	

### ELECTRICAL SPECIFICATIONS

Voltage/Frequency/Phase		208/230 V ~ 60 Hz		
Available Voltage Range		187–253 V		
Current	Cooling	Rated	A	7.8
	Heating	Rated		8.3
Maximum Operating Current	Cooling			15.4
	Heating			15.9
Starting Current				8.3
MCA				19.6
Maximum Circuit Breaker				20
Input Power	Cooling	Rated	kW	1.76
		Min.–Max.		0.43–2.63
	Heating	Rated		1.87
		Min.–Max.		0.52–3.53
Power Factor	Cooling		%	98.1
	Heating			98

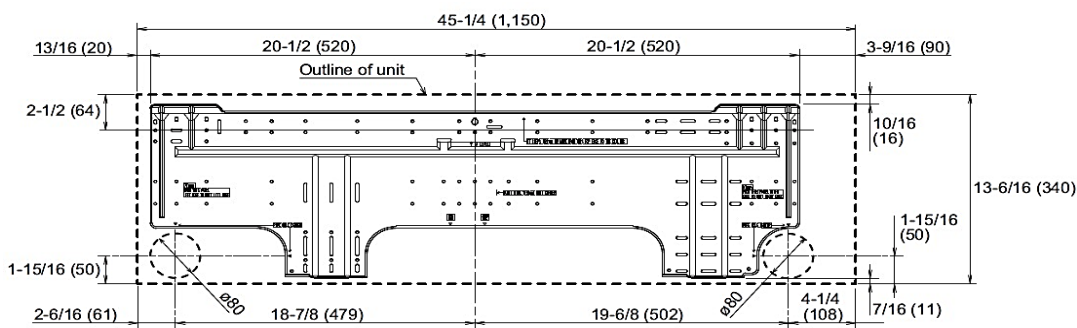
### OTHER

Moisture Removal		pints/h (L/h)	6.3 (3.0)
Energy Star			Yes
Drain hose	Material		PP+HDPE
	Tip diameter	in (mm)	Ø17/32 (Ø13.8) (I.D.), Ø19/32 to 21/32 (Ø15.0 to 16.8)
Operation Range	Cooling	°F (°C)	64 to 90 (18 to 32)
	Heating	%RH	80 or less
		°F (°C)	86 (30) or less

### DIMENSIONS:

Units: In. (mm)

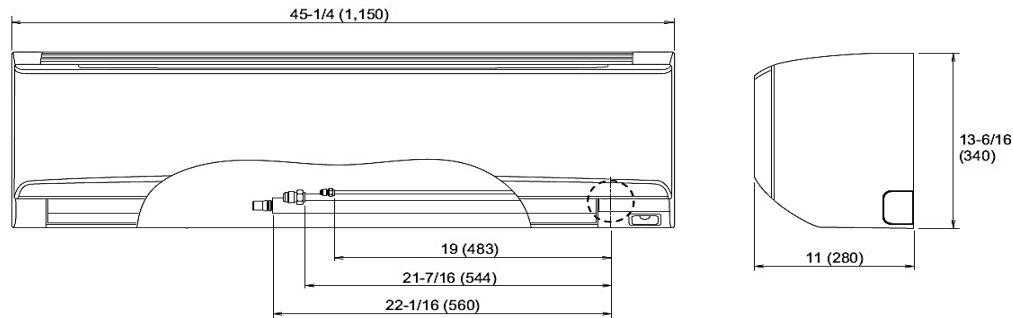
### Wall Bracket Data:



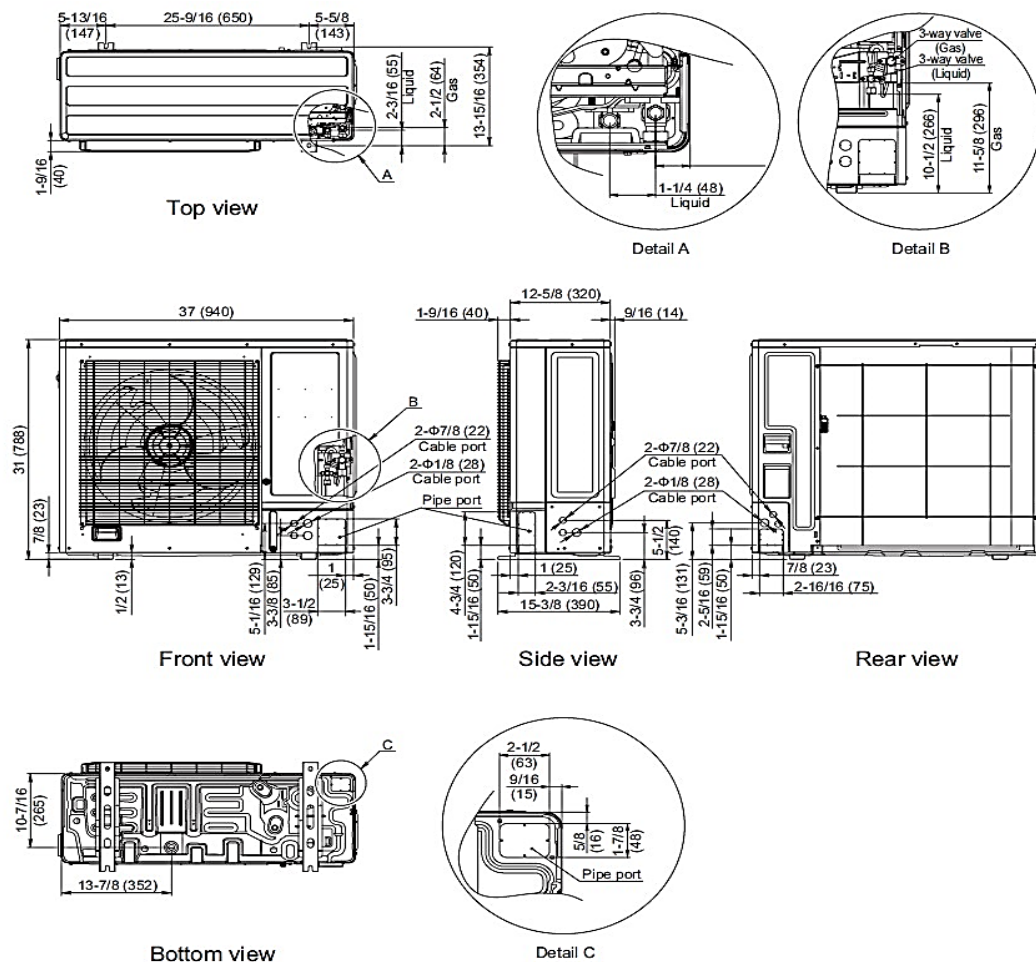
DIMENSIONS

Units: In. (mm)

Indoor Unit



Outdoor Unit



The Fujitsu logo is a worldwide trademark of Fujitsu General Limited. The Airstage logo and name is a worldwide trademark of Fujitsu General Limited and is a registered trademark in Japan, the USA and other countries or areas. Copyright 2024 Fujitsu General America, Inc. Fujitsu's products are subject to continuous improvements. Fujitsu reserves the right to modify product design, specifications and information in this brochure without notice and without incurring any obligations.

Note: Specifications are based on the following conditions:  
 Cooling: Indoor temperature of 80°F (26.7°C) DB/67°F (19.4°C) WB, and outdoor temperature of 95°F (35°C) DB/75°F (23.9°C) WB. Heating: Indoor temperature of 70°F (21.1°C) DB/60°F (15.6°C) WB, and outdoor temperature of 47°F (8.3°C) DB/43°F (6.1°C) WB. Pipe length: 25ft. (7.5m), Height difference: 0ft. (0m) (Outdoor unit - indoor unit).