

Inverter Driven Heat Pump

18,000 BTU Single Zone Compact Cassette

Job Name _____
 Location _____
 Engineer _____
 Submitted To _____
 Submitted By _____
 Reference _____

Date _____
 Approval _____
 Construction _____
 Unit No _____
 Drawing No _____

PRODUCT FEATURES

24 hr. Timer/Weekly Timer
 Auto louver: Up/Down
 Auto Mode
 Auto Changeover
 Daisy Chain Compatible
 Built-in Condensate Pump
 Auto Restart
 Economy Mode
 Auto Fan Mode



MODEL NUMBERS

Indoor Unit	ACUH18LUAS1
Outdoor Unit	AOUH18LUAS1
System	18LUAS1C

EFFICIENCIES

SEER			20.8
SEER 2			21.5
EER			12.5
EER 2			12.5
HSPF			11.6
HSPF 2 (IV) / HSPF 2 (V)			11.2/9
COP	kW/kW		3.5
COP	Btu/hW		11.9
COP2	kW/kW		2.5
COP2	Btu/hW		8.5

OUTDOOR TEMPERATURE OPERATION RANGE

Cooling	*F(*C)	14 to 115 (-10 to 46)
Heating*		*-5 to 75 (-21 to 24)

CAPACITIES

Cooling	Rated	Btu/h	17100
	Min.-Max.		3,100-20,100
Heating	Rated		21600
	Min.-Max.		3,100-23,900

LINESET REQUIREMENTS

Connection Method			Flare
Liquid	in (mm)		Ø 1/4 (Ø 6.35)
Gas			Ø 1/2 (Ø 12.7)
Pre-charge length	ft (m)		66 (20)
Minimum Length			16 (5)
Max. length			98 (30)
Max. height difference			49 (15)

INDOOR DIMENSIONS & WEIGHT

Net (H x W x D)	in (mm)	9-5/8 x 22-7/16 x 22-7/16 (245 x 570 x 570)
Gross (H x W x D)		10-7/16 x 28-3/4 x 24-5/8 (265 x 730 x 625)
Net Weight	lb (kg)	33 (15)
Gross Weight		42 (19)

OUTDOOR DIMENSIONS & WEIGHT

Net (H x W x D)	in (mm)	24-7/8 x 31-7/16 x 11-7/16 (632 x 799 x 290)
Gross (H x W x D)		27-1/4 x 37 x 14-3/4 (692 x 940 x 375)
Net Weight	lb (kg)	86 (39)
Gross Weight		95 (43)

* System continues to operate below rated outdoor operation temperature range, subject to varying conditions. System has no low temperature cut out. Capacity is not tested outside of the rated temperature range.

Warranty Information



7 Year Compressor, 5 Year Parts out-of-the-box Warranty



10 Year Compressor, 10 Year Parts Warranty when registered within 60 days of installation in a residence



12 Year Compressor, 12 Year Parts Warranty when registered within 60 days of installation in a residence, and installed by a Fujitsu Elite contractor

ACCESSORIES

UTY-RNRUZ*	Wired Remote Controller
UTY-RSRY	Simple Remote Controller
UTY-RHRY	Simple Remote Controller
UTY-LNTU	Wireless Remote Controller
UTY-XWZXZG	External Connect Kit
UTR-YDZB	Air Outlet Shutter Plate
UTZ-VXAA	Fresh Air Intake Kit
UTZ-KXGC	Insulation for High Humidity
UTY-XCSX	External Input and Output PCB
UTZ-GXEA	External Input and Output PCB Box
UTY-TFSXZ2	WLAN Adapter
UTY-VMSX	Modbus Converter
UTG-CCGFGA	Cassette Grille
UTY-TTRXZ1	Thermostat Converter
UTY-VTGX	Network Converter
UTY-VTGXV	Network Converter (AC power supply)
UTY-TERX	External Switch Controller



This system combination is Energy Star qualified

Due to continuous product improvements, specifications are subject to change without notice. Please log in to the Fujitsu Portal for the most up-to-date documentation <https://connect.fujitsugeneral.com>

Effective Date: 05/07/2024

Fujitsu General America, Inc. • 342 Changebridge Rd, Pine Brook, NJ 07058 • Toll Free: (888) 888-3424 • www.fujitsugeneral.com

Inverter Driven Heat Pump

18,000 BTU Single Zone Compact Cassette

FAN DATA

Indoor Unit Airflow rate	Cooling	HIGH	CFM (m3/h)	436 (740)
		MED		341 (580)
		LOW		288 (490)
		QUIET		241 (410)
	Heating	HIGH		471 (800)
		MED		341 (580)
		LOW		288 (490)
		QUIET		241 (410)
Outdoor Unit Airflow rate	Cooling			1,395 (2,370)
	Heating			1,460 (2,480)

SOUND PRESSURE

Indoor Unit	Cooling	HIGH	dB (A)	42
		MED		36
		LOW		32
		QUIET		28
	Heating	HIGH		44
		MED		40
		LOW		36
		QUIET		30
Outdoor Unit	Cooling			52
	Heating			55

REFRIGERANT

Type			R410A
Charge	lb oz	2lbs.12oz.	
	g	1250	
Oil Type			RB68A

ELECTRICAL SPECIFICATIONS

Voltage/Frequency/Phase		208/230 V ~ 60 Hz		
Available Voltage Range		187-253 V		
Current	Cooling	Rated	A	6.1
	Heating	Rated		8.1
Maximum Operating Current	Cooling			11.8
	Heating			14.8
Starting current				8.1
MCA				14.8
Maximum Circuit Breaker				20
Input Power	Cooling	Rated	kW	1.37
		Max.		2.35
	Heating	Rated		1.81
		Max.		2.5
Power Factor	Cooling		%	97.6
	Heating			97.2

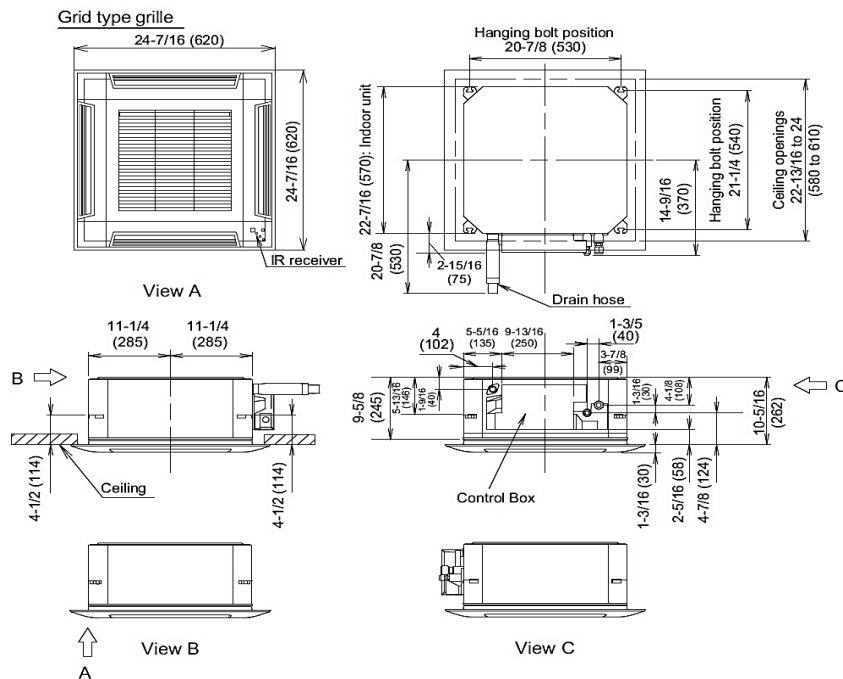
OTHER

Moisture Removal		pints/h (L/h)	4.6 (2.2)
Energy Star			Yes
Drain hose	Material		HARD PVC
	Tip diameter	in (mm)	Ø13/16 (Ø20.7) [I.D.] Ø1-1/16 (Ø26.6) [O.D.]
Operation Range	Cooling	°F (°C)	64 to 90 (18 to 32)
		%RH	80 or less
	Heating	°F (°C)	60 to 86 (16 to 30)

DIMENSIONS:

Units: In. (mm)

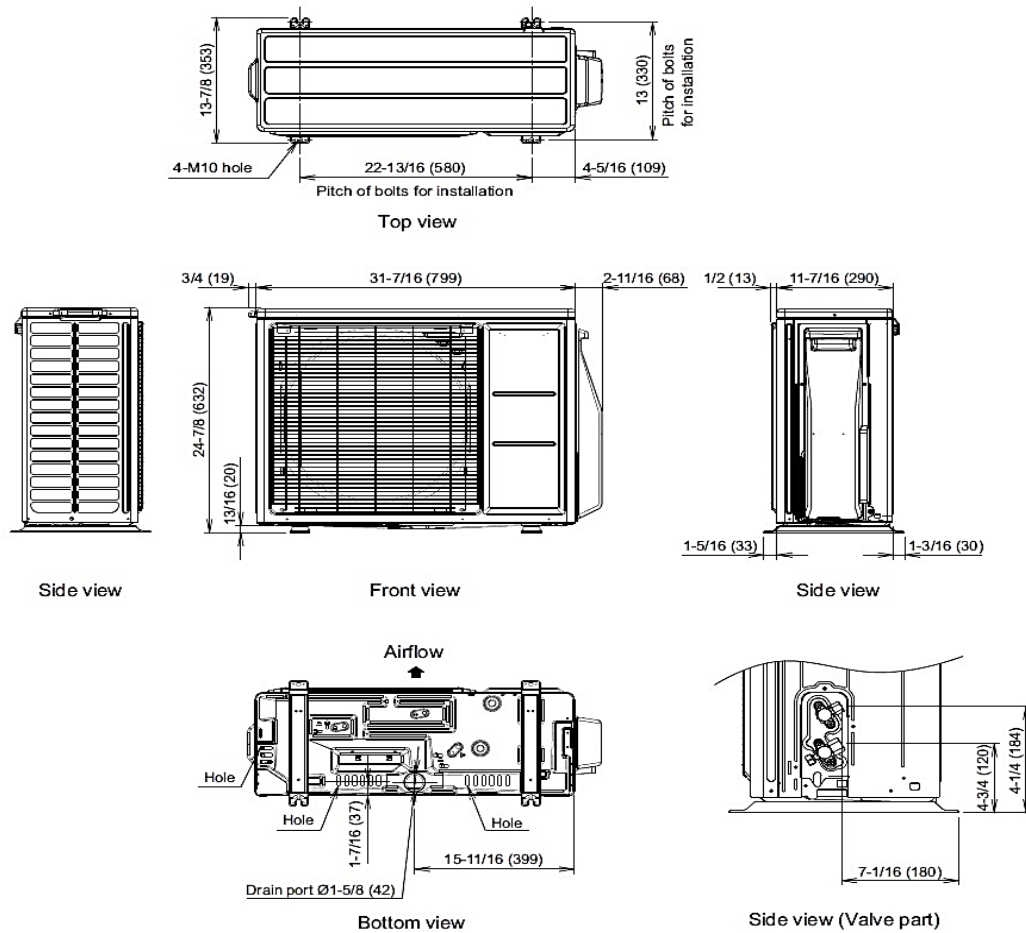
Indoor Unit



DIMENSIONS

Units: In. (mm)

Outdoor Unit



The Fujitsu logo is a worldwide trademark of Fujitsu General Limited. The Airstage logo and name is a worldwide trademark of Fujitsu General Limited and is a registered trademark in Japan, the USA and other countries or areas. Copyright 2024 Fujitsu General America, Inc. Fujitsu's products are subject to continuous improvements. Fujitsu reserves the right to modify product design, specifications and information in this brochure without notice and without incurring any obligations.

Note: Specifications are based on the following conditions:
 Cooling: Indoor temperature of 80°F (26.7°C) DB/67°F (19.4°C) WB, and outdoor temperature of 95°F (35°C) DB/75°F (23.9°C) WB. Heating: Indoor temperature of 70°F (21.1°C) DB/60°F (15.6°C) WB, and outdoor temperature of 47°F (8.3°C) DB/43°F (6.1°C) WB. Pipe length: 25ft. (7.5m), Height difference: 0ft. (0m) (Outdoor unit - indoor unit).