



www.Source1Parts.com

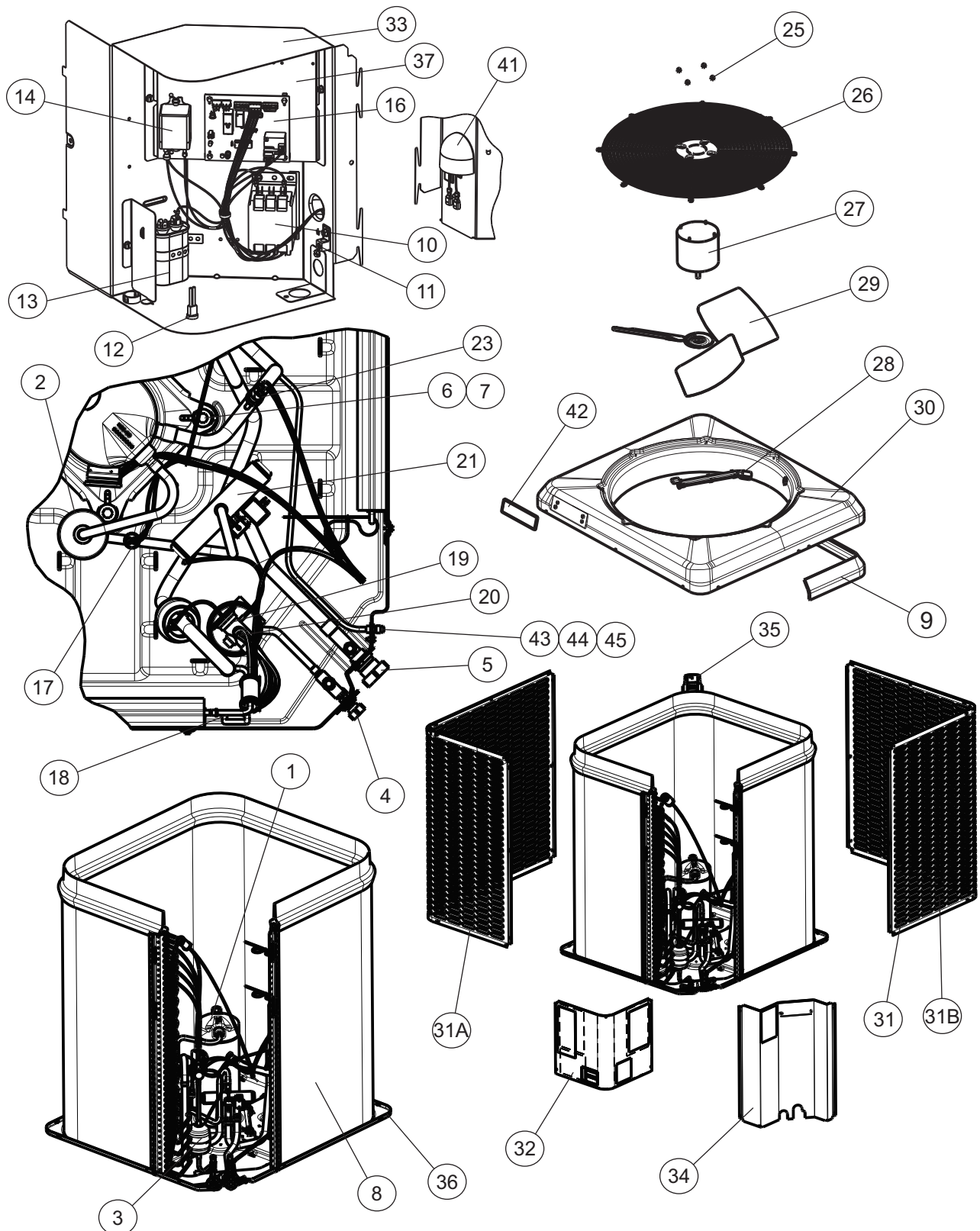
HVAC SERVICE PARTS

# THE SERIES - FIN AND TUBE 14 SEER 3 PHASE HEAT PUMPS, R-410A (STYLE A)

Supersedes:035-24618-001 Rev. B (0117)

035-24618-001 Rev. C (1217)

1 of 4



ITEM	DESCRIPTION	THE30B31SA	THE36B31SA	THE42B31SA	THE48B31SA	THE60B31SA
1	Compressor	S1-01504934004	S1-01504936001	S1-01504938001	S1-01504617004	S1-01504619004
2	Muffler	S1-02212983000	S1-02212983000	S1-02212983000	S1-02212983000	S1-02212983000
3	Filter Drier	S1-32649682000	S1-32649682000	S1-32649682000	S1-32649682000	S1-32649682000
4	Base Valve (3/8") (Liquid)	S1-02322459000	S1-02322459000	S1-02322459000	S1-02322459000	S1-02322459000
5	Base Valve (3/4") (Suction)	S1-02322460000	S1-02322460000	---	---	---
	Base Valve (7/8") (Suction)	---	---	S1-02322461000	S1-02322461000	S1-02322461000
6	Compressor Mount (4 Req'd)	S1-02812355001	S1-02810581001	S1-02812342000	S1-02810505000	S1-02810505000
7	Bolt, Compressor (4 Req'd)	S1-02131452000	S1-02131417000	S1-02116047000	S1-02116047000	S1-02116047000
8	Outdoor Coil Assembly	S1-37339424003	S1-37339424004	S1-37339424004	S1-37339424005	S1-37339424006
9	Molded Foam, Outdoor Coil	S1-02817070000	S1-02817071000	S1-02817071000	S1-02817074000	S1-02817074000
10	Contactor (30 amp)	S1-02425842700	S1-02425842700	S1-02425842700	S1-02425842700	S1-02425842700
11	Lug, Ground	S1-02521798000	S1-02521798000	S1-02521798000	S1-02521798000	S1-02521798000
12	Sensor, Ambient Temp.	<b>S1-02550186000</b>	<b>S1-02550186000</b>	<b>S1-02550186000</b>	<b>S1-02550186000</b>	<b>S1-02550186000</b>
13	Run Capacitor (5 MFD)	S1-02420062700	S1-02420062700	S1-02420062700	S1-02420062700	S1-02420062700
14	Relay, Fan	---	---	---	---	---
15						
16	Control Board, Demand Defrost	S1-03103498000	S1-03103498000	S1-03103498000	S1-03103498000	S1-03103498000
17	Switch, Pressure (High)	S1-02547283000	S1-02547283000	S1-02547283000	S1-02547283000	S1-02547283000
18	Sensor, Temp. Defrost Thermistor	S1-02547281000	S1-02547281000	S1-02547281000	S1-02547281000	S1-02547281000
19	TXV	S1-02527155000	S1-02547301000	S1-02547301000	S1-02547302000	S1-02538739060
20	Distributor	S1-02213021000	S1-02213022000	S1-02213022000	S1-02256124000	S1-02256124000
21	Valve, Reversing	S1-02547288000	S1-02547288000	S1-02547289000	S1-02547289000	S1-02547289000
22	Accumulator	S1-02635441000	S1-02634090000	S1-02634090000	S1-02625573008	S1-02625573008
23	Switch, Pressure (Low)	S1-02547286000	S1-02547286000	S1-02547286000	S1-02547286000	S1-02547286000
24	Mount, Stand-off, Coil Guard (4 Req'd)	S1-02817062000	S1-02817062000	S1-02817062000	S1-02817062000	S1-02817062000
25	Kit, Motor Mounting (Acorn Nuts)	S1-36390117700	S1-36390117700	S1-36390117700	S1-36390117700	S1-36390117700
26	Guard, Fan	S1-02647770000	S1-02647770000	S1-02647770000	S1-02647771000	S1-02647771000
27	Motor, Fan	S1-02436227000	S1-02436227000	S1-02436227000	S1-02436244000	S1-02436244000
28	Wireway	S1-02816469000	S1-02816469000	S1-02816469000	S1-02816470000	S1-02816470000
29	Blade, Fan	S1-02631361000	S1-02642434000	S1-02642434000	S1-02647794000	S1-02647794000
30	Top	S1-07339395007	S1-07339395007	S1-07339395007	S1-07339395010	S1-07339395010
31	Panel, Coil Guard (2 Req'd)	---	---	---	---	---
31A	Panel, Coil Guard (LH)	S1-07339398026	S1-07339398026	S1-07339398026	S1-07339398030	S1-07339429005
31B	Panel, Coil Guard (RH)	S1-07339398024	S1-07339398024	S1-07339398024	S1-07339398028	S1-07339429004
32	Cover, Control Box	S1-07339400004	S1-07339400004	S1-07339400004	S1-07339400004	S1-07339400004
33	Box, Control	<b>S1-07339486001</b>	<b>S1-07339486001</b>	<b>S1-07339486001</b>	<b>S1-07339486001</b>	<b>S1-07339486001</b>
34	Panel, Block-Off	S1-07339399015	S1-07339399015	S1-07339399015	S1-07339399015	S1-07339430001
35	Post, Corner	S1-07339452004	S1-07339452004	S1-07339452004	S1-07339452004	S1-07339452005
36	Pan, Base	S1-07339397003	S1-07339397003	S1-07339397003	S1-07339397004	S1-07339397004
37	Plate, Control	S1-07339396004	S1-07339396004	S1-07339396004	S1-07339396004	S1-07339396004
38*	Harness, Wire, Low Voltage	S1-02547294000	S1-02547294000	S1-02547294000	S1-02547294000	S1-02547294000
39*	Harness, RV/Contactor/Cap	S1-02547295000	S1-02547295000	S1-02547295000	S1-02547295000	S1-02547295000
40*	Harness, Compressor	S1-02543658000	S1-02541385000	S1-02541385000	S1-02543658000	S1-02543658000
41	Gasket, Rain Guard	S1-02817106000	S1-02817106000	S1-02817106000	S1-02817106000	S1-02817106000
42	Badge, Branding	Consult Source 1 Acct. Rep.				
43	Cap, Seal	S1-02310745000	S1-02310745000	S1-02310745000	S1-02310745000	S1-02310745000
44	Core, Valve	S1-02202475700	S1-02202475700	S1-02202475700	S1-02202475700	S1-02202475700
45	Body, Valve	S1-02208982000	S1-02208982000	S1-02208982000	S1-02208982000	S1-02208982000
46*	Strap, Cable	S1-02527642000	S1-02527642000	S1-02527642000	S1-02527642000	S1-02527642000
47*	Damper, Rubber (Discharge Line)	---	S1-02817125000	---	S1-02817125000	S1-02817125000
48*	Damper, Rubber (Suction Line)	S1-02815165002	---	S1-02815165003	S1-02815165003	S1-02815165003
49*	Harness, Wire, Start Component	---	---	---	---	---
50	Tank, Compensator	---	---	S1-02635433000	S1-02635434000	---
51*	Wiring Diagram	5201209	5201209	5201209	5201209	5201209
52*	Relief, Strain (Control Box)	<b>S1-02509080000</b>	<b>S1-02509080000</b>	<b>S1-02509080000</b>	<b>S1-02509080000</b>	<b>S1-02509080000</b>

**NOTE:** \*Not ShownNew replacement parts shown in **bold** face type at the first printing of parts list dated 12/17.

Major components and suggested stocking items are shown with shaded item number.

"&lt;" Across from row indicates a change in that row.

--- Not applicable to specified model.

ITEM	DESCRIPTION	THE30B41SA	THE36B41SA	THE42B41SA	THE48B41SA	THE60B41SA
1	Compressor	S1-01504935004	S1-01504937001	S1-01504939001	S1-01504620004	S1-01504621004
2	Muffler	S1-02212983000	S1-02212983000	S1-02212983000	S1-02212983000	S1-02212983000
3	Filter Drier	S1-32649682000	S1-32649682000	S1-32649682000	S1-32649682000	S1-32649682000
4	Base Valve (3/8") (Liquid)	S1-02322459000	S1-02322459000	S1-02322459000	S1-02322459000	S1-02322459000
5	Base Valve (3/4") (Suction)	S1-02322460000	S1-02322460000	---	---	---
	Base Valve (7/8") (Suction)	---	---	S1-02322461000	S1-02322461000	S1-02322461000
6	Compressor Mount (4 Req'd)	S1-02812355001	S1-02810581001	S1-02812342000	S1-02810505000	S1-02810505000
7	Bolt, Compressor (4 Req'd)	S1-02131452000	S1-02131417000	S1-02116047000	S1-02116047000	S1-02116047000
8	Outdoor Coil Assembly	S1-37339424003	S1-37339424004	S1-37339424004	S1-37339424005	S1-37339424006
9	Molded Foam, Outdoor Coil	S1-02817070000	S1-02817071000	S1-02817071000	S1-02817074000	S1-02817074000
10	Contactora (30 amp)	S1-02425842700	S1-02425842700	S1-02425842700	S1-02425842700	S1-02425842700
11	Lug, Ground	S1-02521798000	S1-02521798000	S1-02521798000	S1-02521798000	S1-02521798000
12	Sensor, Ambient Temp.	<b>S1-02550186000</b>	<b>S1-02550186000</b>	<b>S1-02550186000</b>	<b>S1-02550186000</b>	<b>S1-02550186000</b>
13	Run Capacitor (5 MFD)	S1-02420062700	S1-02420062700	S1-02420062700	S1-02420062700	S1-02420062700
14	Relay, Fan	S1-1460-5101	S1-1460-5101	S1-1460-5101	S1-1460-5101	S1-1460-5101
15						
16	Control Board, Demand Defrost	S1-03103498000	S1-03103498000	S1-03103498000	S1-03103498000	S1-03103498000
17	Switch, Pressure (High)	S1-02547283000	S1-02547283000	S1-02547283000	S1-02547283000	S1-02547283000
18	Sensor, Temp. Defrost Thermistor	S1-02547281000	S1-02547281000	S1-02547281000	S1-02547281000	S1-02547281000
19	TXV	S1-02527155000	S1-02547301000	S1-02547301000	S1-02547302000	S1-02538739060
20	Distributor	S1-02213021000	S1-02213022000	S1-02213022000	S1-02256124000	S1-02256124000
21	Valve, Reversing	S1-02547288000	S1-02547288000	S1-02547289000	S1-02547289000	S1-02547289000
22	Accumulator	S1-02635441000	S1-02634090000	S1-02634090000	S1-02625573008	S1-02625573008
23	Switch, Pressure (Low)	S1-02547286000	S1-02547286000	S1-02547286000	S1-02547286000	S1-02547286000
24	Mount, Stand-off, Coil Guard (4 Req'd)	S1-02817062000	S1-02817062000	S1-02817062000	S1-02817062000	S1-02817062000
25	Kit, Motor Mounting (Acorn Nuts)	S1-36390117700	S1-36390117700	S1-36390117700	S1-36390117700	S1-36390117700
26	Guard, Fan	S1-02647777000	S1-02647777000	S1-02647777000	S1-02647771000	S1-02647771000
27	Motor, Fan	S1-02436284000	S1-02436284000	S1-02436284000	S1-02436288000	S1-02436288000
28	Wireway	S1-02816469000	S1-02816469000	S1-02816469000	S1-02816470000	S1-02816470000
29	Blade, Fan	S1-02631361000	S1-02642434000	S1-02642434000	S1-02647794000	S1-02647794000
30	Top	S1-07339395007	S1-07339395007	S1-07339395007	S1-07339395010	S1-07339395010
31	Panel, Coil Guard (2 Req'd)	---	---	---	---	---
31A	Panel, Coil Guard (LH)	S1-07339398026	S1-07339398026	S1-07339398026	S1-07339398030	S1-07339429005
31B	Panel, Coil Guard (RH)	S1-07339398024	S1-07339398024	S1-07339398024	S1-07339398028	S1-07339429004
32	Cover, Control Box	S1-07339400004	S1-07339400004	S1-07339400004	S1-07339400004	S1-07339400004
33	Box, Control	<b>S1-07339486001</b>	<b>S1-07339486001</b>	<b>S1-07339486001</b>	<b>S1-07339486001</b>	<b>S1-07339486001</b>
34	Panel, Block-Off	S1-07339399015	S1-07339399015	S1-07339399015	S1-07339399015	S1-07339430001
35	Post, Corner	S1-07339452004	S1-07339452004	S1-07339452004	S1-07339452004	S1-07339452005
36	Pan, Base	S1-07339397003	S1-07339397003	S1-07339397003	S1-07339397004	S1-07339397004
37	Plate, Control	S1-07339396004	S1-07339396004	S1-07339396004	S1-07339396004	S1-07339396004
38*	Harness, Wire, Low Voltage	S1-02547294000	S1-02547294000	S1-02547294000	S1-02547294000	S1-02547294000
39*	Harness, RV/Contactor/Cap	S1-02547295000	S1-02547295000	S1-02547295000	S1-02547295000	S1-02547295000
40*	Harness, Compressor	S1-02543658000	S1-02541385000	S1-02541385000	S1-02543658000	S1-02543658000
41	Gasket, Rain Guard	S1-02817106000	S1-02817106000	S1-02817106000	S1-02817106000	S1-02817106000
42	Badge, Branding	Consult Source 1 Acct. Rep.				
43	Cap, Seal	S1-02310745000	S1-02310745000	S1-02310745000	S1-02310745000	S1-02310745000
44	Core, Valve	S1-02202475700	S1-02202475700	S1-02202475700	S1-02202475700	S1-02202475700
45	Body, Valve	S1-02208982000	S1-02208982000	S1-02208982000	S1-02208982000	S1-02208982000
46*	Strap, Cable	S1-02527642000	S1-02527642000	S1-02527642000	S1-02527642000	S1-02527642000
47*	Damper, Rubber (Discharge Line)	S1-02817125000	S1-02817125000	---	---	S1-02817125000
48*	Damper, Rubber (Suction Line)	S1-02815165002	---	S1-02815165003	S1-02815165003	S1-02815165003
49*	Harness, Wire, Start Component	---	---	---	---	---
50	Tank, Compensator	---	---	S1-02635433000	S1-02635434000	---
51*	Wiring Diagram	5203527	5203527	5203527	5203527	5203527
52*	Relief, Strain (Control Box)	<b>S1-02509080000</b>	<b>S1-02509080000</b>	<b>S1-02509080000</b>	<b>S1-02509080000</b>	<b>S1-02509080000</b>

**NOTE:** \*Not ShownNew replacement parts shown in **bold** face type at the first printing of parts list dated 12/17.

Major components and suggested stocking items are shown with shaded item number.

"—" Across from row indicates a change in that row.

--- Not applicable to specified model.

**TO ORDER AUTHORIZED FACTORY REPLACEMENT PARTS** - Contact your Source1 HVAC Parts Distributor or visit our website at **[www.Source1Parts.com](http://www.Source1Parts.com)** for a Distributor and Dealer listing.