



www.Source1Parts.com

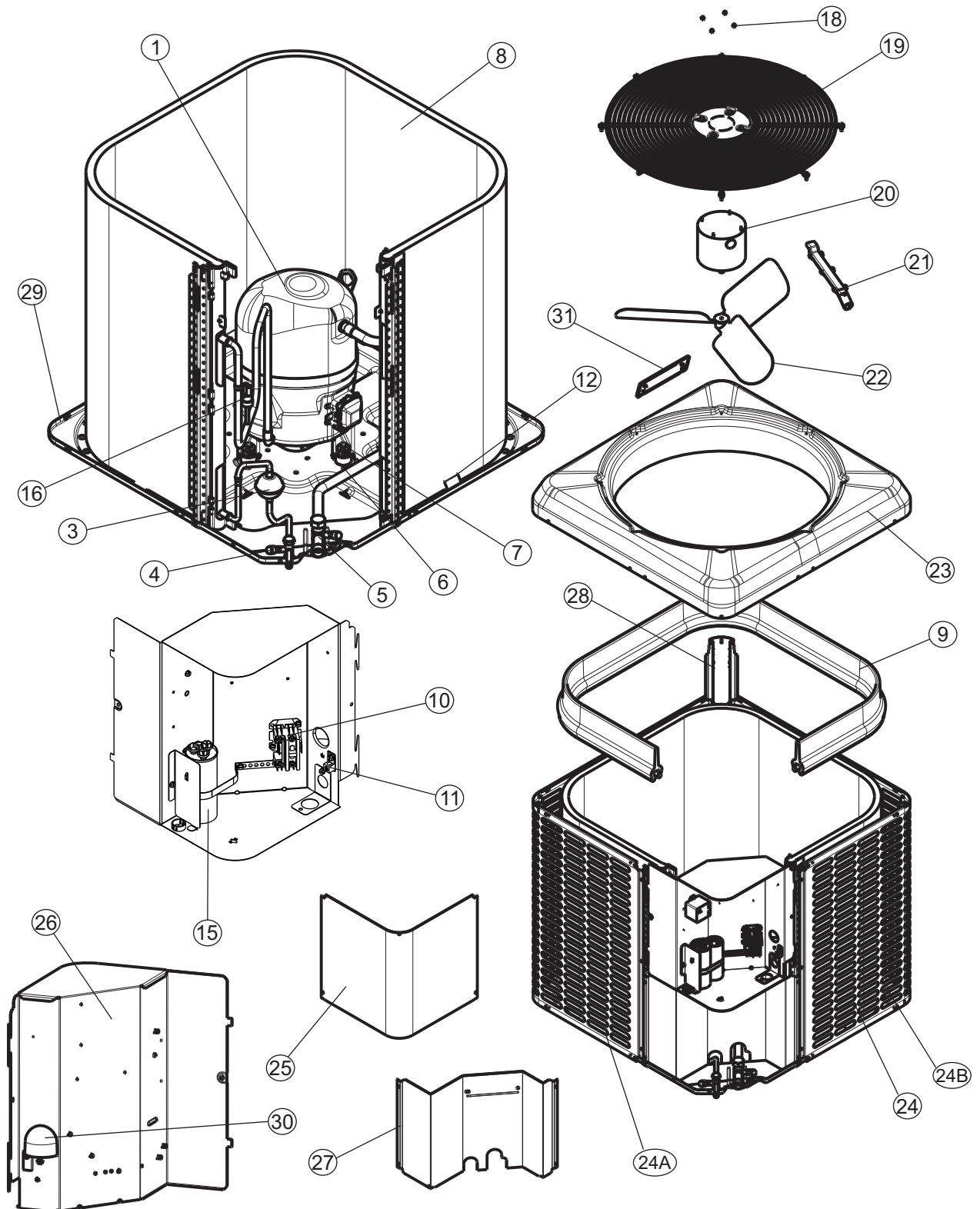
HVAC SERVICE PARTS

TCD SERIES - MICROCHANNEL
13 SEER 3 PHASE AIR CONDITIONER, R-410A
(STYLE A)

Supersedes:035-24617-001 Rev. A (0816)

035-24617-001 Rev. B (1217)

1 of 6



230 VOLT

ITEM	DESCRIPTION	TCD30B31SA	TCD36B31SA
1	Compressor	S1-01504925004	S1-01504927004
2			
3	Filter Drier	S1-400503	S1-400503
4	Base Valve (3/8") (Liquid)	S1-02322459000	S1-02322459000
5	Base Valve (3/4") (Suction)	S1-02322460000	S1-02322460000
6	Compressor Mount (Pkg. of 4)	S1-02809519000	S1-02809519000
7	Bolt, Compressor (4 Req'd)	S1-02131417000	S1-02131417000
8	Outdoor Coil Assembly	S1-37339413002	S1-37339413003
9	Molded Foam, Outdoor Coil	S1-02817069000	S1-02817069000
10	Contactor (30 amp)	S1-02425842700	S1-02425842700
11	Lug, Ground	S1-02521798000	S1-02521798000
12	Mount, Coil (6 Req'd)	S1-02817063000	S1-02817063000
13	Capacitor (5 MFD)	S1-02420062700	S1-02420062700
14			
15			
16	Switch, Pressure (High)	S1-02546848000	S1-02546848000
17*	Mount, Stand-off, Coil Guard (2 Req'd)	S1-02817062000	S1-02817062000
18	Kit, Motor Mounting (Acorn Nuts)	S1-36390117700	S1-36390117700
19	Guard, Fan	S1-02647769000	S1-02647769000
20	Motor, Fan	S1-02436228000	S1-02436227000
21	Wireway	S1-02816468000	S1-02816468000
22	Blade, Fan	S1-32634097000	S1-02634593000
23	Top	S1-07339395004	S1-07339395004
24	Panel, Coil Guard (2 Req'd)	S1-07339398003	S1-07339398005
25	Cover, Control Box	S1-07339400004	S1-07339400004
26	Box, Control	S1-07339486001	S1-07339486001
27	Panel, Block-Off	S1-07339399009	S1-07339399007
28	Post, Corner	S1-07339452001	S1-07339452002
29	Pan, Base	S1-07339397002	S1-07339397002
30	Gasket, Rain Hood	S1-02817106000	S1-02817106000
31	Badge, Branding	Consult your Source 1 Acct Rep.	
32*	Harness, Wire, AC	S1-02547245000	S1-02547245000
33			
34			
35*	Harness, Compressor	S1-02541385000	S1-02541385000
36*	Wiring Diagram	5203528	5203528

<

NOTE: *Not ShownNew replacement parts shown in **bold** face type at the first printing of parts list dated 12/17.

Major components and suggested stocking items are shown with shaded item number.

"-" Across from row indicates a change in that row.

--- Not applicable to specified model.



230 VOLT

ITEM	DESCRIPTION	TCD42B31SA	TCD48B31SA	TCD60B31SA
1	Compressor	S1-01504930004	S1-01504617004	S1-01504619004
2*	Muffler	S1-02212983000	---	---
3	Filter Drier	S1-400503	S1-400503	S1-400503
4	Base Valve (3/8") (Liquid)	S1-02322459000	S1-02322459000	S1-02322459000
5	Base Valve (7/8") (Suction)	S1-02322461000	S1-02322461000	S1-02322461000
6	Compressor Mount (Pkg. of 4)	S1-02810505000	S1-02810505000	S1-02810505000
7	Bolt, Compressor (4 Req'd)	S1-02116047000	S1-02116047000	S1-02116047000
8	Outdoor Coil Assembly	S1-37339413004	S1-37339413004	S1-37339413005
9	Molded Foam, Outdoor Coil	S1-02817072000	S1-02817072000	S1-02817075000
10	Contactors (30 amp)	S1-02425842700	S1-02425842700	S1-02425842700
11	Lug, Ground	S1-02521798000	S1-02521798000	S1-02521798000
12	Mount, Coil (6 Req'd)	S1-02817063000	S1-02817063000	S1-02817063000
13	Capacitor (5 MFD)	S1-02420062700	S1-02420062700	S1-02420062700
14				
15				
16	Switch, Pressure (High)	S1-02546848000	S1-02546848000	S1-02546848000
17*	Mount, Stand-off, Coil Guard (2 Req'd)	S1-02817062000	S1-02817062000	S1-02817062000
18	Kit, Motor Mounting (Acom Nuts)	S1-36390117700	S1-36390117700	S1-36390117700
19	Guard, Fan	S1-02647770000	S1-02647770000	S1-02647771000
20	Motor, Fan	S1-02436227000	S1-02436227000	S1-02436227000
21	Wireway	S1-02816469000	S1-02816469000	S1-02816470000
22	Blade, Fan	S1-02631361000	S1-02631361000	S1-02647794000
23	Top	S1-07339395007	S1-07339395007	S1-07339395010
24A	Panel, Coil Guard (LH)	S1-07339398009	S1-07339398009	S1-07339398013
24B	Panel, Coil Guard (RH)	S1-07339398007	S1-07339398007	S1-07339398011
25	Cover, Control Box	S1-07339400004	S1-07339400004	S1-07339400004
26	Box, Control	S1-07339486001	S1-07339486001	S1-07339486001
27	Panel, Block-Off	S1-07339399005	S1-07339399005	S1-07339399007
28	Post, Corner	S1-07339452003	S1-07339452003	S1-07339452002
29	Pan, Base	S1-07339397003	S1-07339397003	S1-07339397004
30	Gasket, Rain Hood	S1-02817106000	S1-02817106000	S1-02817106000
31	Badge, Branding	Consult your Source 1 Acct. Rep.		
32*	Harness, Wire, AC	S1-02547245000	S1-02547245000	S1-02547245000
33*	Blanket, Compressor	S1-01007644000	S1-01007646000	S1-01007646000
34				
35*	Harness, Compressor	S1-02543185000	S1-02543658000	S1-02543658000
36*	Wiring Diagram	5203528	5203528	5203528

NOTE: *Not ShownNew replacement parts shown in **bold** face type at the first printing of parts list dated 12/17.

Major components and suggested stocking items are shown with shaded item number.

"←" Across from row indicates a change in that row.

--- Not applicable to specified model.

460 VOLT

ITEM	DESCRIPTION	TCD30B41SA	TCD36B41SA
1	Compressor	S1-01504926004	S1-01504928004
2			
3	Filter Drier	S1-400503	S1-400503
4	Base Valve (3/8") (Liquid)	S1-02322459000	S1-02322459000
5	Base Valve (3/4") (Suction)	S1-02322460000	S1-02322460000
6	Compressor Mount (Pkg. of 4)	S1-02809519000	S1-02809519000
7	Bolt, Compressor (4 Req'd)	S1-02131417000	S1-02131417000
8	Outdoor Coil Assembly	S1-37339413002	S1-37339413003
9	Molded Foam, Outdoor Coil	S1-02817069000	S1-02817069000
10	Contactor (30 amp)	S1-02425842700	S1-02425842700
11	Lug, Ground	S1-02521798000	S1-02521798000
12	Mount, Coil (6 Req'd)	S1-02817063000	S1-02817063000
13	Capacitor (5 MFD)	S1-02420062700	S1-02420062700
14			
15			
16	Switch, Pressure (High)	S1-02546848000	S1-02546848000
17*	Mount, Stand-off, Coil Guard (2 Req'd)	S1-02817062000	S1-02817062000
18	Kit, Motor Mounting (Acorn Nuts)	S1-36390117700	S1-36390117700
19	Guard, Fan	S1-02647769000	S1-02647769000
20	Motor, Fan	S1-02436287000	S1-02436284000
21	Wireway	S1-02816468000	S1-02816468000
22	Blade, Fan	S1-32634097000	S1-02634593000
23	Top	S1-07339395004	S1-07339395004
24	Panel, Coil Guard (2 Req'd)	S1-07339398003	S1-07339398005
25	Cover, Control Box	S1-07339400004	S1-07339400004
26	Box, Control	S1-07339486001	S1-07339486001
27	Panel, Block-Off	S1-07339399009	S1-07339399007
28	Post, Corner	S1-07339452001	S1-07339452002
29	Pan, Base	S1-07339397002	S1-07339397002
30	Gasket, Rain Hood	S1-02817106000	S1-02817106000
31	Badge, Branding	Consult your Source 1 Acct Rep.	
32*	Harness, Wire, AC	S1-02547245000	S1-02547245000
33			
34			
35*	Harness, Compressor	S1-02541385000	S1-02541385000
36*	Wiring Diagram	5203528	5203528

<

NOTE: *Not ShownNew replacement parts shown in **bold** face type at the first printing of parts list dated 12/17.

Major components and suggested stocking items are shown with shaded item number.

"-" Across from row indicates a change in that row.

--- Not applicable to specified model.



460 VOLT

ITEM	DESCRIPTION	TCD42B41SA	TCD48B41SA	TCD60B41SA
1	Compressor	S1-01504931004	S1-01504620004	S1-01504621004
2*	Muffler	S1-02212983000	---	---
3	Filter Drier	S1-400503	S1-400503	S1-400503
4	Base Valve (3/8") (Liquid)	S1-02322459000	S1-02322459000	S1-02322459000
5	Base Valve (7/8") (Suction)	S1-02322461000	S1-02322461000	S1-02322461000
6	Compressor Mount (Pkg. of 4)	S1-02810505000	S1-02810505000	S1-02810505000
7	Bolt, Compressor (4 Req'd)	S1-02116047000	S1-02116047000	S1-02116047000
8	Outdoor Coil Assembly	S1-37339413004	S1-37339413004	S1-37339413005
9	Molded Foam, Outdoor Coil	S1-02817072000	S1-02817072000	S1-02817075000
10	Contactator (30 amp)	S1-02425842700	S1-02425842700	S1-02425842700
11	Lug, Ground	S1-02521798000	S1-02521798000	S1-02521798000
12	Mount, Coil (6 Req'd)	S1-02817063000	S1-02817063000	S1-02817063000
13	Capacitor (5 MFD)	S1-02420062700	S1-02420062700	S1-02420062700
14				
15				
16	Switch, Pressure (High)	S1-02546848000	S1-02546848000	S1-02546848000
17*	Mount, Stand-off, Coil Guard (2 Req'd)	S1-02817062000	S1-02817062000	S1-02817062000
18	Kit, Motor Mounting (Acom Nuts)	S1-36390117700	S1-36390117700	S1-36390117700
19	Guard, Fan	S1-02647770000	S1-02647770000	S1-02647771000
20	Motor, Fan	S1-02436284000	S1-02436284000	S1-02436284000
21	Wireway	S1-02816469000	S1-02816469000	S1-02816470000
22	Blade, Fan	S1-02631361000	S1-02631361000	S1-02647794000
23	Top	S1-07339395007	S1-07339395007	S1-07339395010
24A	Panel, Coil Guard (LH)	S1-07339398009	S1-07339398009	S1-07339398013
24B	Panel, Coil Guard (RH)	S1-07339398007	S1-07339398007	S1-07339398011
25	Cover, Control Box	S1-07339400004	S1-07339400004	S1-07339400004
26	Box, Control	S1-07339486001	S1-07339486001	S1-07339486001
27	Panel, Block-Off	S1-07339399005	S1-07339399005	S1-07339399007
28	Post, Corner	S1-07339452003	S1-07339452003	S1-07339452002
29	Pan, Base	S1-07339397003	S1-07339397003	S1-07339397004
30	Gasket, Rain Hood	S1-02817106000	S1-02817106000	S1-02817106000
31	Badge, Branding	Consult your Source 1 Acct Rep.		
32*	Harness, Wire, AC	S1-02547245000	S1-02547245000	S1-02547245000
33*	Blanket, Compressor	S1-01007644000	S1-01007646000	S1-01007646000
34				
35*	Harness, Compressor	S1-02543185000	S1-02543658000	S1-02543658000
36*	Wiring Diagram	5203528	5203528	5203528

NOTE: *Not ShownNew replacement parts shown in **bold** face type at the first printing of parts list dated 12/17.

Major components and suggested stocking items are shown with shaded item number.

"←" Across from row indicates a change in that row.

--- Not applicable to specified model.

575 VOLT

ITEM	DESCRIPTION	TCD36B51SA	TCD48B51SA	TCD60B51SA
1	Compressor	S1-01504929004	S1-01504622004	S1-01504614004
2*	Muffler	---	---	---
3	Filter Drier	S1-400503	S1-400503	S1-400503
4	Base Valve (3/8") (Liquid)	S1-02322459000	S1-02322459000	S1-02322459000
5	Base Valve (3/4") (Suction)	S1-02322460000	---	---
	Base Valve (7/8") (Suction)	---	S1-02322461000	S1-02322461000
6	Compressor Mount (Pkg. of 4)	S1-02809519000	S1-02810505000	S1-02810505000
7	Bolt, Compressor (4 Req'd)	S1-02131417000	S1-02116047000	S1-02116047000
8	Outdoor Coil Assembly	S1-37339413003	S1-37339413004	S1-37339413005
9	Molded Foam, Outdoor Coil	S1-02817069000	S1-02817072000	S1-02817075000
10	Contact (30 amp)	S1-02425842700	S1-02425842700	S1-02425842700
11	Lug, Ground	S1-02521798000	S1-02521798000	S1-02521798000
12	Mount, Coil (6 Req'd)	S1-02817063000	S1-02817063000	S1-02817063000
13	Capacitor (5 MFD)	S1-02420062700	S1-02420062700	S1-02420062700
14				
15				
16	Switch, Pressure (High)	S1-02546848000	S1-02546848000	S1-02546848000
17*	Mount, Stand-off, Coil Guard (2 Req'd)	S1-02817062000	S1-02817062000	S1-02817062000
18	Kit, Motor Mounting (Acorn Nuts)	S1-36390117700	S1-36390117700	S1-36390117700
19	Guard, Fan	S1-026477769000	S1-02647770000	S1-02647771000
20	Motor, Fan	S1-02439546000	S1-02439546000	S1-02439546000
21	Wireway	S1-02816468000	S1-02816469000	S1-02816470000
22	Blade, Fan	S1-02634593000	S1-02631361000	S1-02647794000
23	Top	S1-07339395004	S1-07339395007	S1-07339395010
24	Panel, Coil Guard (2 Req'd)	S1-07339398005	---	---
24A	Panel, Coil Guard (LH)	---	S1-07339398009	S1-07339398013
24B	Panel, Coil Guard (RH)	---	S1-07339398007	S1-07339398011
25	Cover, Control Box	S1-07339400004	S1-07339400004	S1-07339400004
26	Box, Control	S1-07339486001	S1-07339486001	S1-07339486001
27	Panel, Block-Off	S1-07339399007	S1-07339399005	S1-07339399007
28	Post, Corner	S1-07339452002	S1-07339452003	S1-07339452002
29	Pan, Base	S1-07339397002	S1-07339397003	S1-07339397004
30	Gasket, Rain Hood	S1-02817106000	S1-02817106000	S1-02817106000
31	Badge, Branding	Consult your Source 1 Acct. Rep.		
32*	Harness, Wire, AC	S1-02547245000	S1-02547245000	S1-02547245000
33*	Blanket, Compressor	---	S1-01007646000	S1-01007646000
34				
35*	Harness, Compressor	S1-02543185000	S1-02543658000	S1-02543658000
36*	Wiring Diagram	5203528	5203528	5203528

<

NOTE: *Not ShownNew replacement parts shown in **bold** face type at the first printing of parts list dated 11/17.

Major components and suggested stocking items are shown with shaded item number.

"<" Across from row indicates a change in that row.

--- Not applicable to specified model.

TO ORDER AUTHORIZED FACTORY REPLACEMENT PARTS - Contact your Source1 HVAC Parts Distributor or visit our website at **www.Source1Parts.com** for a Distributor and Dealer listing.