

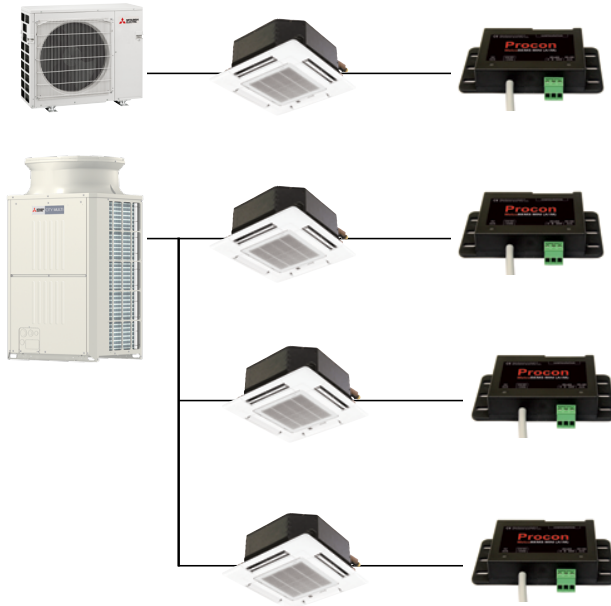
Job Name:

System Reference:

Date:

**PROCON MELCOBEMS MINI (A1M)****SPECIFICATIONS**

- Allows for a third party building management system to control a Mitsubishi Electric CITY MULTI®, M-Series, or P-Series indoor unit
- One MelcoBEMS MINI (A1M) per indoor unit
- Indoor Unit Connection: CN105 – IT Terminal
- 12VDC power from indoor unit CN105 Connector
- Compatible with MAC-333IF connector CN505 IT  
\*requires additional 12VDC power supply
- Communication protocols supported:
  - BACnet® MSTP (RS-485) with addressing 1-127
  - MODBUS RTU (RS-485) with addressing 1-247
- LED light notification status of valid communication between:
  - Procon and Indoor unit
  - Procon and BACnet®/MODBUS networks
- Approximate cable length is 37 in. (940 mm)
- Dimensions: 3.74 x 2 x 0.75 in. (95 x 51 x 19 mm)
- Weight: 3.0 oz (85 g)

**SYSTEM DIAGRAM****MODBUS POINTS TABLE**

Object Type	Object Name
Commandable Points	ON/OFF
	Mode
	Setpoint
	Fan Speed
	Air Direction
Monitor Only Points	Fault Codes
	Room Temperature

**BACnet® POINTS TABLE**

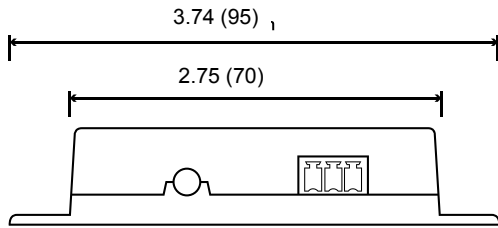
Object Type	Object Name
Commandable Points	Drive OFF/ON Setup
	Setpoint
	Mode Setup
	Fan Speed Setup
	Air Direction Setup
	Temperature Units
Monitor Only Points	Drive OFF/ON State
	Mode State
	Fan Speed State
	Air Direction State
	Inlet Temperature
	Fault Code

**MODBUS POINTS TABLE**

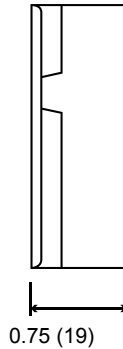
Configurable Settings	
Register Name	Modicon Address
Modbus Slave ID	40005
BACnet® Station ID	
Modbus RS-485 Baud Rate	40006
BACnet® RS-485 Baud Rate	
RS-485 Parity Type	40007
Drive On/Off	40008
Room Temperature [READ ONLY]	40009
Fault Code (hex) [READ ONLY]	40010
Firmware Version [READ ONLY]	40011
Modbus Comms Counter [READ ONLY]	40012
Fault Code (decimal) [READ ONLY]	40013
System Type Detected [READ ONLY]	40014
Deadband Enabled State [READ ONLY]	40015
BMS Room Temperature (signed)	40016
BMS Room Temperature	40017
BMS Virtual Setpoint	40018
Deadband Heating Setpoint	40019
Deadband Cooling Setpoint	40020
BACnet® Device Instance (most significant 16 bits)	40273
BACnet® Device Instance (least significant 16 bits)	40274
BACnet® Max Master	40275
BACnet® Max Info Frames	40276
BACnet® APDU Timeout	40277
BACnet® APDU Retries	40278

## DIMENSIONS

Front View

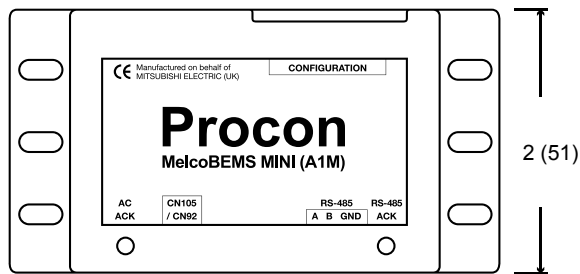


Side View



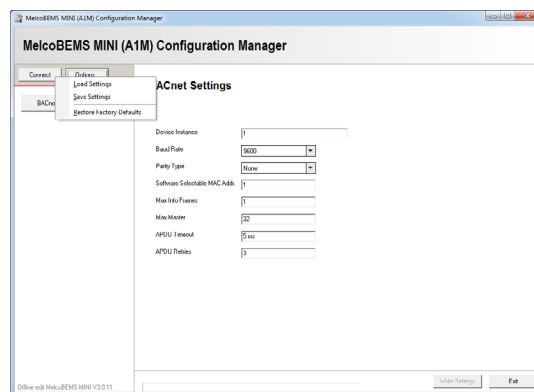
Units: in. (mm)

Top View



## CONFIGURATION TOOL: MELCOBEMS MINI V1.0.1.0B.EXE

- Software downloadable from [MyLinkDrive.com](http://MyLinkDrive.com)
- Software tool to setup BACnet® setting through Modbus Points Table
- Requires field supplied part: USB to RS-485 adapter



USB to RS-485

1340 Satellite Boulevard, Suwanee, GA 30024  
Toll Free: 800-433-4822 [www.mehvac.com](http://www.mehvac.com)