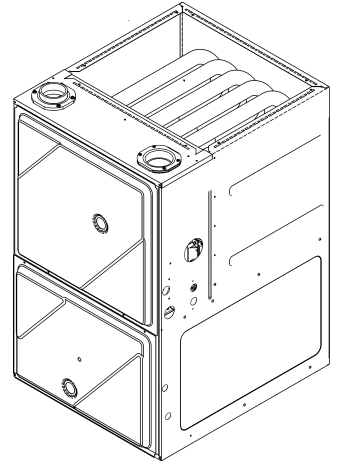




REPAIR PARTS

GD9S96 Counter Flow Furnace

GD9S960403BNAA
GD9S960603BNAA
GD9S960804CNAA
GD9S961005CNAA
GD9S961205DNAA



This manual is to be used by qualified technicians only.

© 2024 Goodman Manufacturing Company, L.P. ♦ 19001 Kermier Rd. ♦ Waller, TX 77484

Important Information

Index

Functional Parts List	3
Illustration and Parts	4 - 11

Views shown are for parts illustrations only, not servicing procedures.

Text Codes:

AR - As Required

NA - Not Available

NS - Not Shown

00000000 - See Note

QTY - Quantity Example (QTY 3) (If Quantity not shown, Quantity = 1)

M - Model Example (M1) (If M Code not shown, then part is used on all Models)

Expanded Model Nomenclature:

Example

M1 - Model#1

M2 - Model#2

M3 - Model#3

Goodman Manufacturing Company, L.P. is not responsible for personal injury or property damage resulting from improper service. Review all service information before beginning repairs.

Warranty service must be performed by an authorized technician, using authorized factory parts. If service is required after the warranty expires, Goodman Manufacturing Company, L.P. also recommends contacting an authorized technician and using authorized factory parts.

Goodman Manufacturing Company, L.P. reserves the right to discontinue, or change at any time, specifications or designs without notice or without incurring obligations.

For assistance within the U.S.A. contact:

Homeowner Support

Goodman Manufacturing Company, L.P.

19001 Kermier Road

Waller, Texas 77484

877-254-4729-Telephone

713-863-2382-Facsimile

For assistance outside the U.S.A. contact:

International Division

Goodman Manufacturing Company, L.P.

19001 Kermier Road

Waller, Texas 77484

713-861-2500-Telephone

713-863-2382-Facsimile

Functional Parts

Part

No: Description:

0130F00038	AUX LIMIT - LT BLUE 120° (QTY 2)
0163F00017	BECKETT BURNER (QTY 2)
PCBBF301V007	CIRCUIT BOARD, FURNACE
0130F00010	FLAME SENSOR
0151M00105	GAS VALVE
0257F20128	HEAT EXCHANGER ASSY (M5)
0257F20127	HEAT EXCHANGER ASSY (M1)
0257F20117	HEAT EXCHANGER ASSY (M4)
0257F20116	HEAT EXCHANGER ASSY (M3)
0257F20115	HEAT EXCHANGER ASSY (M2)
0130F00008	IGNITOR-SINI 17 SEC
20162901	LIMIT, PRIMARY (M1, M2)
20162903	LIMIT, PRIMARY (M4)
0130F00071	LIMIT, PRIMARY (M3)
20162906	LIMIT, PRIMARY (M5)
0130F00123	LIMIT, RESET MAN (M1, M2)
10123539	LIMIT-RESET MAN-ORANGE (M4, M5)
10123534	LIMIT-RESET MAN-ORANGE (M3)
0271F00507	MORRISON 11 X 10 BLOWER (M3, M4)
0271F00508	MORRISON 11 X 11 BLOWER (M5)
0271F00506	MORRISON 11 X 8 BLOWER (M1, M2)
0131F00334M	MOTOR 1 HP W/O CONTROLLER (M4, M5)
0131F00332M	MOTOR 1/2 HP W/O CONTROLLER (M1, M2)
0131F00333M	MOTOR 3/4 HP W/O CONTROLLER (M3)
0131F00260	MOTOR PROGRAMMED (M5)
0131F00259	MOTOR PROGRAMMED (M4)
0131F00258	MOTOR PROGRAMMED (M3)
0131F00257	MOTOR PROGRAMMED (M2)
0131F00256	MOTOR PROGRAMMED (M1)
0171M00001	MOTOR-ID, BLOWER
0130F00439	SWITCH, PRESSURE (M2, M3, M4)
0130F00447	SWITCH, PRESSURE (M1)
0130F00438	SWITCH, PRESSURE (M5)
10690402	SWITCH-INTERLOCK
0130M00140	TRANSFORMER, 120V TO 24V,40VA

SPECIAL PARTS

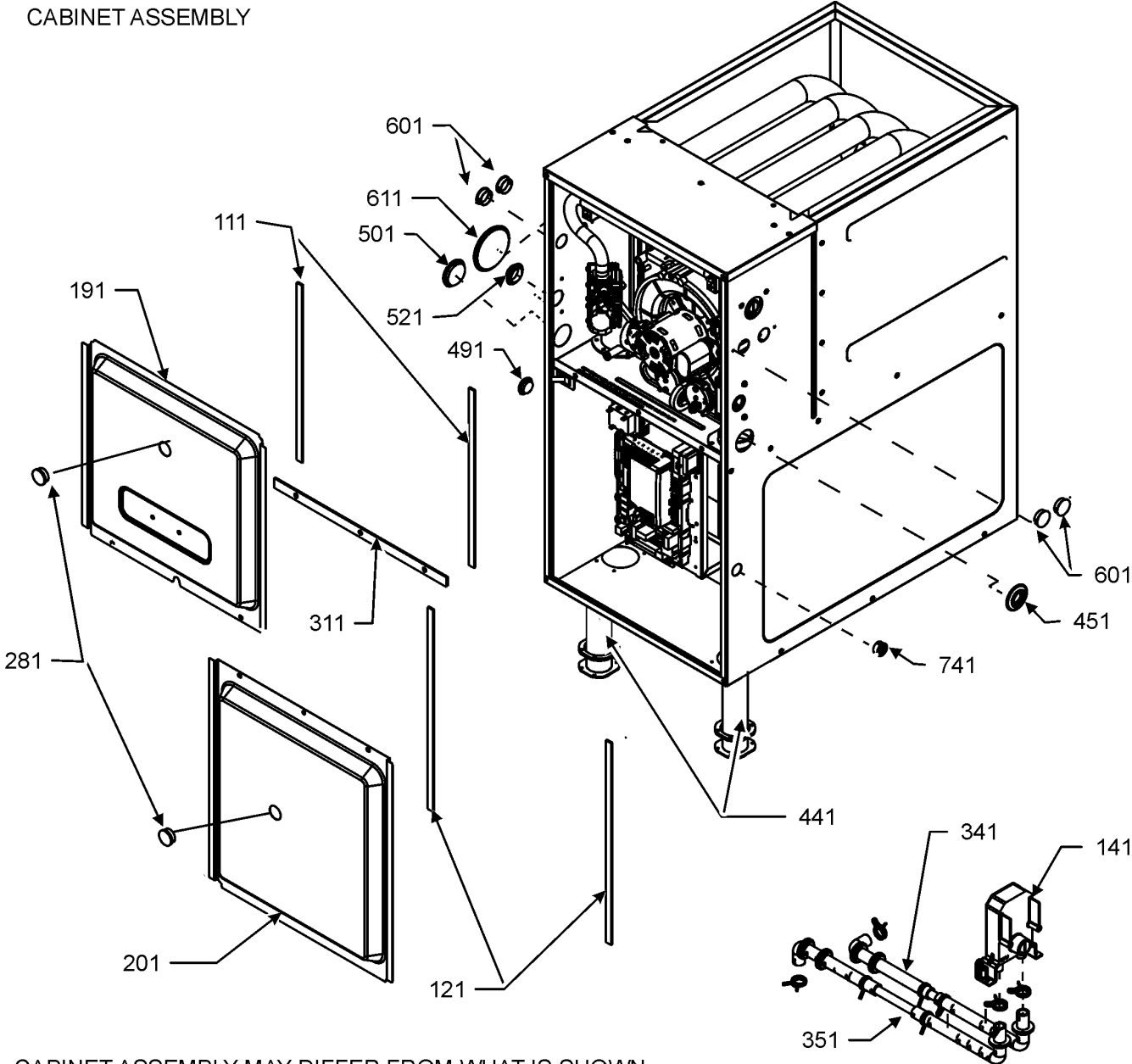
0161F00086 NAMEPLATE, GOODMAN

Expanded Model Nomenclature

M1 - GD9S960403BNAA
M2 - GD9S960603BNAA
M3 - GD9S960804CNAA
M4 - GD9S961005CNAA
M5 - GD9S961205DNAA

Cabinet Assembly

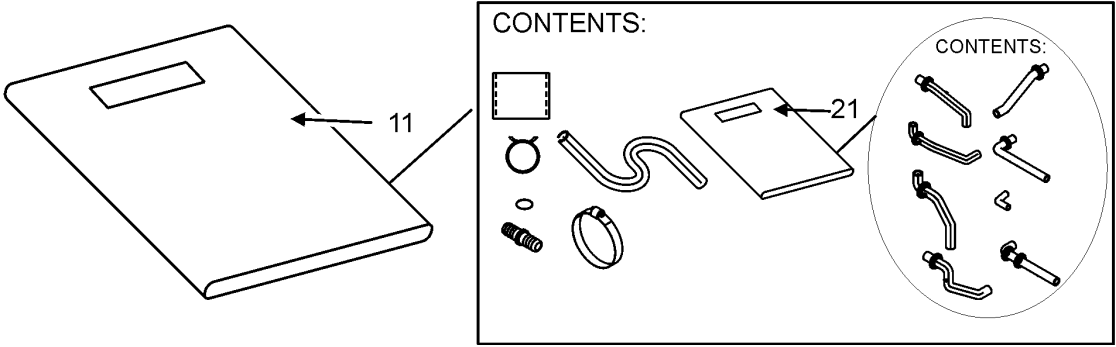
CABINET ASSEMBLY



CABINET ASSEMBLY MAY DIFFER FROM WHAT IS SHOWN

DRAIN TRAP ASSEMBLY

DRAIN KIT ASSEMBLY



Cabinet Assembly

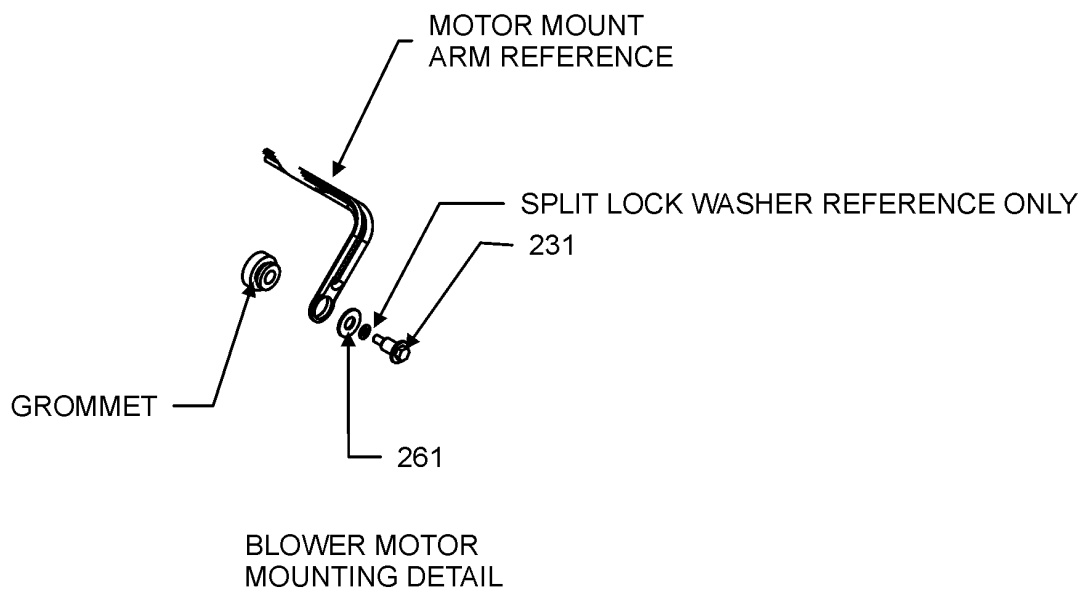
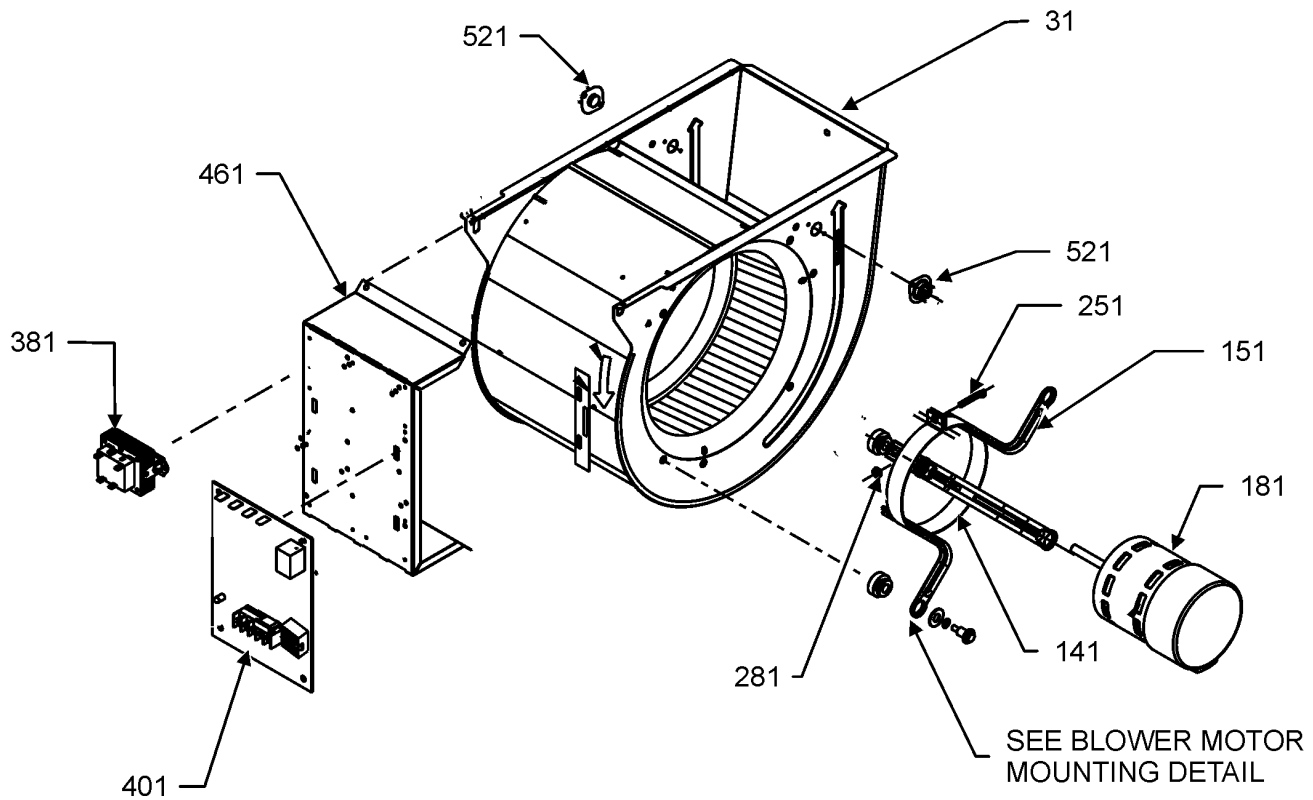
Ref. Part No: No:	Description:	Ref. Part No: No:	Description:
Image 1:			
11	0270F05403		DRAIN KIT ASSY
21	0270F05403		DRAIN KIT ASSY
111	0154F00024		GASKET (QTY 2)
121	0154F00025		GASKET (QTY 2)
141	0161F00046		DRAIN TRAP
191	0121F00291DG		DOOR, ACCESS 17.5 PNT (M1, M2)
191	0121F00292DG		DOOR, ACCESS 21 PNT (M3, M4)
191	0121F00293DG		DOOR, ACCESS 24.5 PNT (M5)
201	0121F00288DG		DOOR, BLOWER 17.5 PNT (M1, M2)
201	0121F00289DG		DOOR, BLOWER 21 PNT (M3, M4)
201	0121F00290DG		DOOR, BLOWER 24.5 PNT (M5)
281	B1392139		VIEW PORT BUSHING (QTY 2)
311	0154F00020		GASKET, DECK (M1, M2)
311	0154F00021		GASKET, DECK (M3, M4)
311	0154F00022		GASKET, DECK (M5)
341	0270F03125		CF DRAIN TUBE ASSY (M1, M2)
341	0270F03515		CF DRAIN TUBE ASSY (M3, M4)
341	0270F03516		CF DRAIN TUBE ASSY (M5)
351	0270F03126		CF DRAIN TUBE ASSY (M3, M4)
351	0270F03127		CF DRAIN TUBE ASSY (M5)
351	0270F03514		CF DRAIN TUBE ASSY (M1, M2)
441	0161F00064		PIPE, STRAIGHT CF (QTY 2)
451	M0501301		PIPE GROMMET
491	M0570808		BUTTON PLUG
501	M0570806		BUTTON PLUG
521	0161M00027		HOLE PLUG
601	B1392021		PLASTIC PLUG, 1" (2713-BLK) (QTY 4)
611	0163M00460		CLAMP-HOSE (QTY 2)
741	B1392104		UNIVERSAL BUSHING UB 875
NS	M0310345		BUTTON PLUG (QTY 2)
NS	M0570807		BUTTON PLUG
NS	M0209730		DECORATIVE SCREW (QTY 3)
NS	0154F00041		FRESH AIR GASKET
NS	0163M00319		HEX NUT INSERT (QTY 3)
NS	0161F00086		NAMEPLATE, GOODMAN
NS	M0273904		RETAINER SCREW (QTY 3)

Expanded Model Nomenclature

M1 - GD9S960403BNAA M2 - GD9S960603BNAA M3 - GD9S960804CNAA M4 - GD9S961005CNAA M5 - GD9S961205DNAA

Blower Assembly

BLOWER ASSEMBLY



BLOWER ASSEMBLY MAY DIFFER FROM WHAT IS SHOWN

Blower Assembly

Ref. Part No: No:	Description:	Ref. Part No: No:	Description:
Image 1:			
31	0271F00507		MORRISON 11 X 10 BLOWER (M3, M4)
31	0271F00508		MORRISON 11 X 11 BLOWER (M5)
31	0271F00506		MORRISON 11 X 8 BLOWER (M1, M2)
141	0121M00039		MOUNT BAND, MOTOR (HEAVY DUTY)
151	0163M00538		MOUNT ARM, MOTOR (QTY 3)
181	0131F00334M		MOTOR 1 HP W/O CONTROLLER (M4, M5)
181	0131F00332M		MOTOR 1/2 HP W/O CONTROLLER (M1, M2)
181	0131F00333M		MOTOR 3/4 HP W/O CONTROLLER (M3)
181	0131F00256		MOTOR PROGRAMMED (M1)
181	0131F00257		MOTOR PROGRAMMED (M2)
181	0131F00258		MOTOR PROGRAMMED (M3)
181	0131F00259		MOTOR PROGRAMMED (M4)
181	0131F00260		MOTOR PROGRAMMED (M5)
231	M0250565		TC SCREW 1.25" (QTY 3)
251	0163M00320		HEX HEAD ALL THREAD TAP BOLT
261	B1392918		FLAT WASHER (QTY 3)
281	B1393800		LOCKNUT, NYLON, INSERT 1/4, 20
381	0130M00140		TRANSFORMER, 120V TO 24V, 40VA
401	PCBBF301V007		CIRCUIT BOARD, FURNACE
461	0121F00802		MOUNTING PANEL, CONTROLS
521	0130F00038		AUX LIMIT - LT BLUE 120° (QTY 2)
NS	B1392021		1" PLASTIC PLUG (QTY 4)
NS	0159F00160		CTM, MOTOR HARNESS
NS	0259F00024		HARNESS - BLOWER
NS	M0282015		KEPS NUT (M4, M5)
NS	0163M00279		SCREW #6 X .375 SELF DRILL (M4, M5)
NS	B1392820		SLIT LOCK WASHER (M4, M5)

Expanded Model Nomenclature

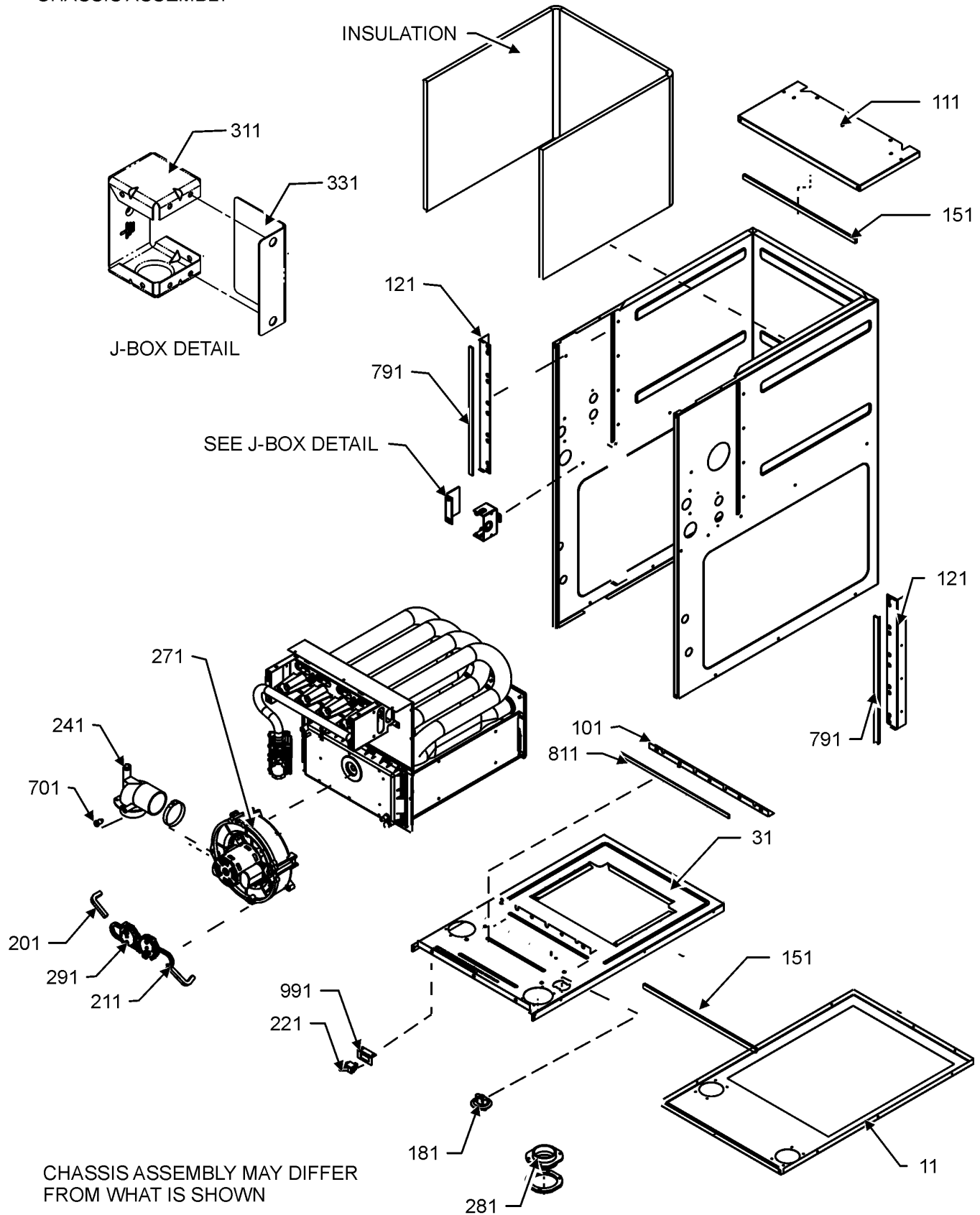
M1 - GD9S960403BNAA
M2 - GD9S960603BNAA
M3 - GD9S960804CNAA
M4 - GD9S961005CNAA
M5 - GD9S961205DNAA

To replace the Shaft end of motor order:

0131F00332M	MOTOR 1/2 HP W/O CONTROLLER
0131F00333M	MOTOR 3/4 HP W/O CONTROLLER
0131F00334M	MOTOR 1 HP W/O CONTROLLER

Chassis Assembly

CHASSIS ASSEMBLY



Chassis Assembly

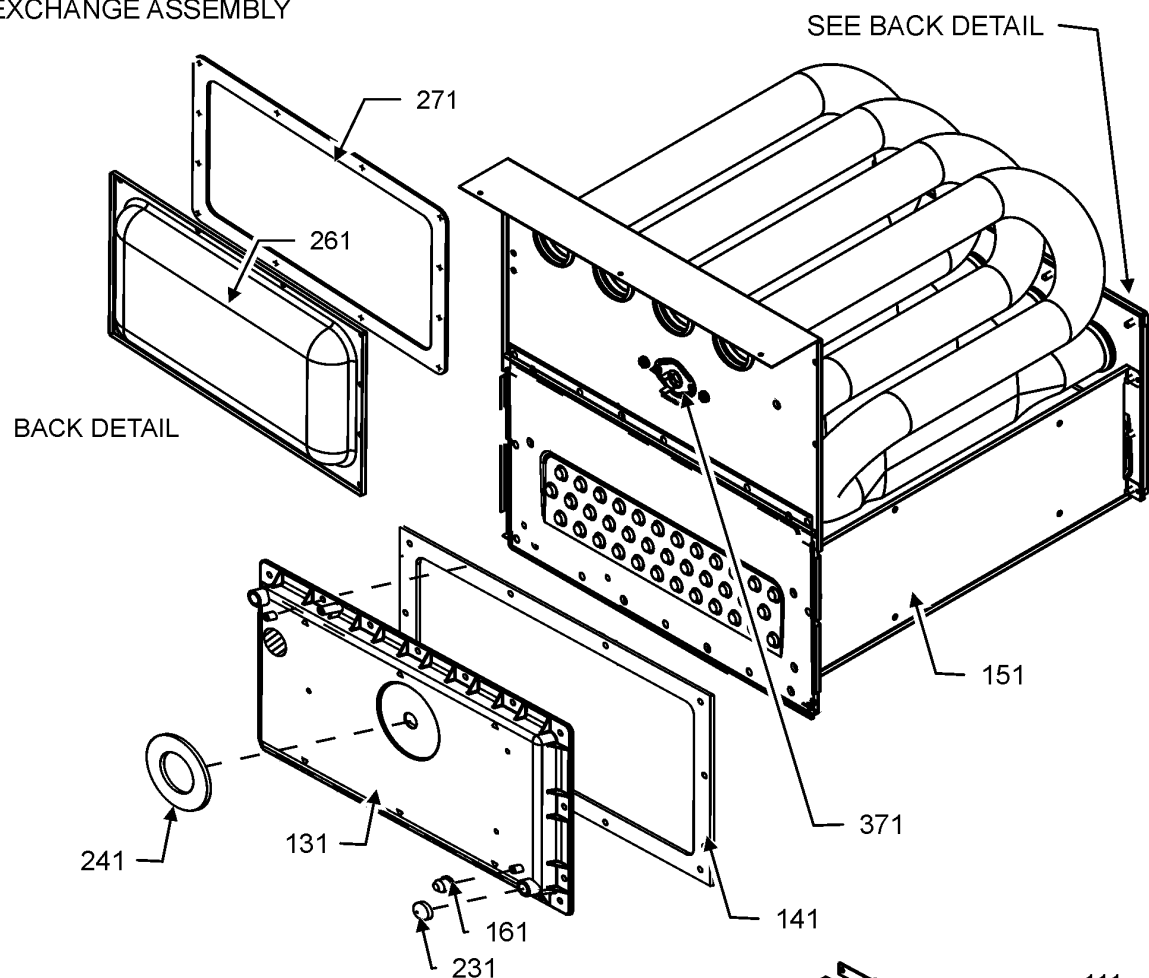
Ref. Part No: No:	Description:	Ref. Part No: No:	Description:
Image 1:			
11	0121F00548DG		PAINTED BASEPAN, 17.5 CF (M1, M2)
11	0121F00549DG		PAINTED BASEPAN, 21 CF (M3, M4)
11	0121F00550DG		PAINTED BASEPAN, 24.5 CF (M5)
31	0121F00536		DECK-BLOWER 17.5" CF (M1, M2)
31	0121F00537		DECK-BLOWER 21" CF (M3, M4)
31	0121F00538		DECK-BLOWER 24.5" CF (M5)
101	0121F00314		ANGLE, DECK (M1, M2)
101	0121F00315		ANGLE, DECK (M3, M4)
101	0121F00316		ANGLE, DECK (M5)
111	0121F00426DG		TOP, PAINTED FURNACE 17.5" CF (M1, M2)
111	0121F00434DG		TOP, PAINTED FURNACE 21" CF (M3, M4)
111	0121F00442DG		TOP, PAINTED FURNACE 24.5 CF (M5)
121	0121F00313		SIDE ANGLE (QTY 2)
151	20179307		GASKET (M5)
151	20179309		GASKET (M1, M2)
151	20179310		GASKET (M3)
181	0159F20015		WIRE HARNESS (M2, M3, M4, M5)
181	0159F20017		WIRE HARNESS (M1)
201	0164M00118		HOSE- PRESSURE SW 10" (M1)
201	0164M00117		HOSE- PRESSURE SW 8" (M2, M3, M4, M5)
211	0164M00119		HOSE- PRESSURE SW 12" (M1, M2)
211	0164M00120		HOSE- PRESSURE SW 14" (M3, M4)
211	0164M00121		HOSE- PRESSURE SW 16" (M5)
221	10690402		SWITCH-INTERLOCK
241	0164F00026		ELBOW-FLUE, 17.5" CFLOW (M1, M2)
241	0164F00027		ELBOW-FLUE, 21" CFLOW (M3, M4)
241	0164F00028		ELBOW-FLUE, 24.5" CFLOW (M5)
271	0171M00001		MOTOR-ID, BLOWER
281	0161F00037		COUPLING
291	0130F00438		SWITCH, PRESSURE (M5)
291	0130F00439		SWITCH, PRESSURE (M2, M3, M4)
291	0130F00447		SWITCH, PRESSURE (M1)
311	0121F20060		BOX, JUNCTION 90%
331	0121F20061		BOX, JUNCTION 80%
701	M0326804		TUBE PLUG
791	0154F00015		GASKET (QTY 2)
811	0154F00014		GASKET (M1, M2)
811	0154F00016		GASKET (M3, M4, M5)
991	0121F00389		BRACKET, DOOR SWITCH
NS	0160F00015		INSULATION, HT EXCHANGER 17.5" (M1, M2)
NS	0160F00016		INSULATION, HT EXCHANGER 21" (M3, M4)
NS	0160F00017		INSULATION, HT EXCHANGER 24.5" (M5)

Expanded Model Nomenclature

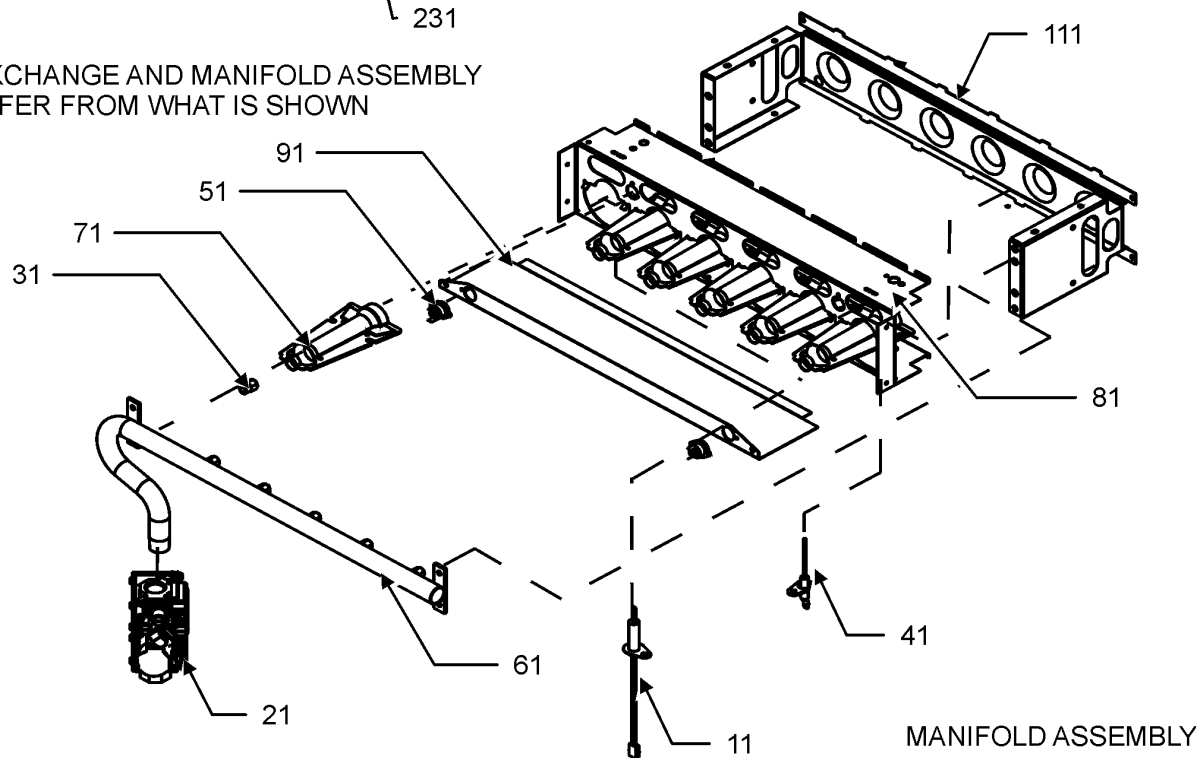
M1 - GD9S960403BNAA
M2 - GD9S960603BNAA
M3 - GD9S960804CNAA
M4 - GD9S961005CNAA
M5 - GD9S961205DNAA

Heat Exchange and Manifold Assembly

HEAT EXCHANGE ASSEMBLY



HEAT EXCHANGE AND MANIFOLD ASSEMBLY
MAY DIFFER FROM WHAT IS SHOWN



Heat Exchange and Manifold Assembly

Ref. Part No: No:	Description:	Ref. Part No: No:	Description:
Image 1:		Image 1:	
11	0130F00008	IGNITOR-SINI 17 SEC	
21	0151M00105	GAS VALVE	
31	10716005	ORIFICE (QTY 2)	
41	0130F00010	FLAME SENSOR	
51	0130F00123	LIMIT, RESET MAN (M1, M2)	
51	10123534	LIMIT-RESET MAN-ORANGE (M3)	
51	10123539	LIMIT-RESET MAN-ORANGE (M4, M5)	
61	0163F00007	MANIFOLD (M1)	
61	0163F00008	MANIFOLD (M2)	
61	0163F00009	MANIFOLD (M3)	
61	0163F00010	MANIFOLD (M4)	
61	0163F00011	MANIFOLD (M5)	
71	0163F00017	BECKETT BURNER (QTY 2)	
81	0121F00456	BRACKET-BURNER 2 (M1)	
81	0121F00455	BRACKET-BURNER 3 (M2)	
81	0121F00454	BRACKET-BURNER 4 (M3)	
81	0121F00453	BRACKET-BURNER 5 (M4)	
81	0121F00451	BRACKET-BURNER 6 (M5)	
91	0121F00539	SHEILD, BURNER (M1)	
91	0121F00540	SHEILD, BURNER (M2)	
91	0121F00541	SHEILD, BURNER (M3)	
91	0121F00542	SHEILD, BURNER (M4)	
91	0121F00543	SHEILD, BURNER (M5)	
111	0121F00469	ORIFICE BRACKET-BURNER 2 (M1)	
111	0121F00468	ORIFICE BRACKET-BURNER 3 (M2)	
111	0121F00467	ORIFICE BRACKET-BURNER 4 (M3)	
111	0121F00466	ORIFICE BRACKET-BURNER 5 (M4)	
111	0121F00465	ORIFICE BRACKET-BURNER 6 (M5)	
131	0161F00030	COVER, FRONT (M3)	
131	0161F00053	COVER, FRONT (M1)	
131	0161F00054	COVER, FRONT (M2)	
131	0161F00060	COVER, FRONT (M4)	
131	0161F00063	COVER, FRONT (M5)	
141	0154F00026	GASKET FRONT COVER (M1, M2)	
141	0154F00030	GASKET FRONT COVER (M3, M4)	
141	0154F00034	GASKET FRONT COVER (M5)	
151	0257F20115	HEAT EXCHANGER ASSY (M2)	
151	0257F20116	HEAT EXCHANGER ASSY (M3)	
151	0257F20117	HEAT EXCHANGER ASSY (M4)	
151	0257F20127	HEAT EXCHANGER ASSY (M1)	
151	0257F20128	HEAT EXCHANGER ASSY (M5)	
161	M0326804	TUBE PLUG	
231	A1781105	CAP-VINYL .500	
241	0154F00043	GASKET ID BLOWER	
261	0121F00317	COVER, REAR (M1, M2)	
261	0121F00318	COVER, REAR (M3, M4)	
261	0121F00319	COVER, REAR (M5)	
271	0154F00037	GASKET, REAR CVR (M1, M2)	
271	0154F00038	GASKET, REAR CVR (M3, M4)	
271	0154F00039	GASKET, REAR CVR (M5)	
371	0130F00071	LIMIT, PRIMARY (M3)	
371	20162901	LIMIT, PRIMARY (M1, M2)	
371	20162903	LIMIT, PRIMARY (M4)	
371	20162906	LIMIT, PRIMARY (M5)	
NS	0154F00041	GASKET FRESH AIR	
NS	0121F00583	INSULATION, RETAINER (M1, M2)	
NS	0121F00584	INSULATION, RETAINER (M3, M4)	
		Expanded Model Nomenclature	
		M1 - GD9S960403BNAA	
		M2 - GD9S960603BNAA	
		M3 - GD9S960804CNAA	
		M4 - GD9S961005CNAA	
		M5 - GD9S961205DNAA	