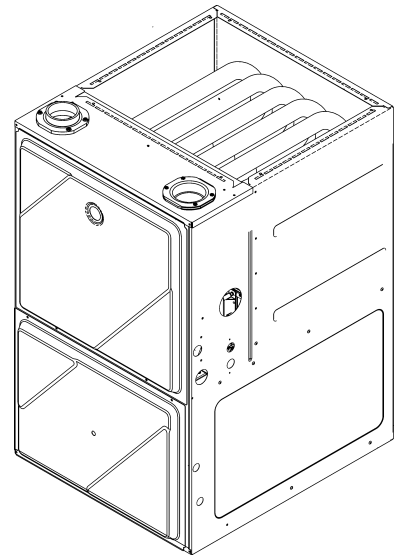




REPAIR PARTS

GR9S92 Up Flow Furnace

GR9S920403ANAA
GR9S920603BNAA
GR9S920803BNAA
GR9S920804CNAA
GR9S920805CNAA
GR9S921004CNAA
GR9S921005CNAA
GR9S921205DNAA



This manual is to be used by qualified technicians only.

© 2024 Goodman Manufacturing Company, L.P. ♦ 19001 Kermier Rd. ♦ Waller, TX 77484

Important Information

Index

Functional Parts List	3
Illustration and Parts	4 - 11

Views shown are for parts illustrations only, not servicing procedures.

Text Codes:

AR - As Required

NA - Not Available

NS - Not Shown

00000000 - See Note

QTY - Quantity Example (QTY 3) (If Quantity not shown, Quantity = 1)

M - Model Example (M1) (If M Code not shown, then part is used on all Models)

Expanded Model Nomenclature:

Example

M1 - Model#1

M2 - Model#2

M3 - Model#3

Goodman Manufacturing Company, L.P. is not responsible for personal injury or property damage resulting from improper service. Review all service information before beginning repairs.

Warranty service must be performed by an authorized technician, using authorized factory parts. If service is required after the warranty expires, Goodman Manufacturing Company, L.P. also recommends contacting an authorized technician and using authorized factory parts.

Goodman Manufacturing Company, L.P. reserves the right to discontinue, or change at any time, specifications or designs without notice or without incurring obligations.

For assistance within the U.S.A. contact:

Homeowner Support

Goodman Manufacturing Company, L.P.

19001 Kermier Road

Waller, Texas 77484

877-254-4729-Telephone

713-863-2382-Facsimile

For assistance outside the U.S.A. contact:

International Division

Goodman Manufacturing Company, L.P.

19001 Kermier Road

Waller, Texas 77484

713-861-2500-Telephone

713-863-2382-Facsimile

Functional Parts

Part

No: Description:

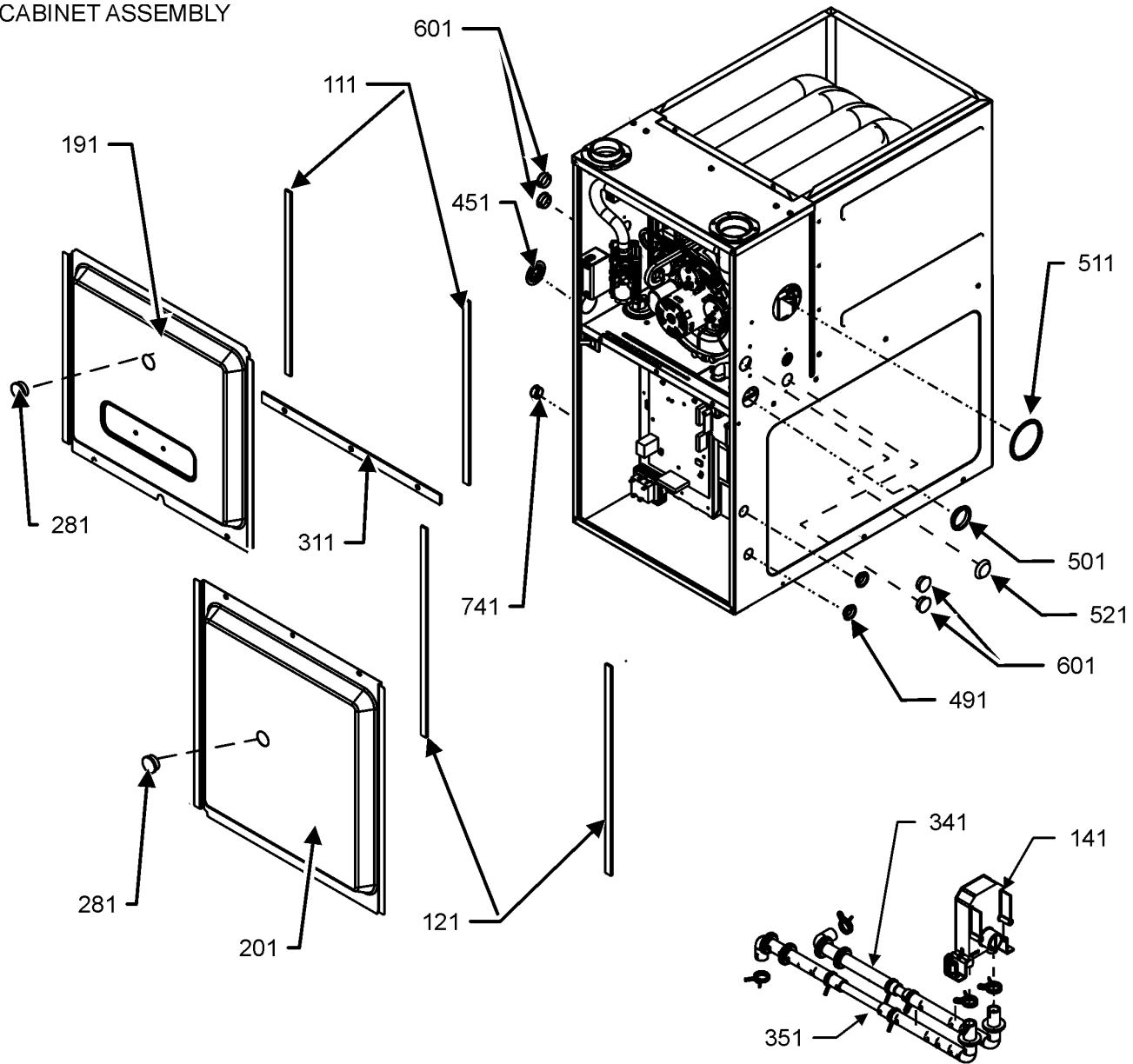
		Expanded Model Nomenclature
0163F00017	BECKETT BURNER (QTY 2)	M1 - GR9S920403ANAA
0271F00463	BLOWER HOUSING ASSY (M4, M6)	M2 - GR9S920603BNAA
0271F00462	BLOWER HOUSING ASSY (M2, M3)	M3 - GR9S920803BNAA
0271F00323	BLOWER HSG ASSY (M1)	M4 - GR9S920804CNAA
PCBBF301V007	CIRCUIT BOARD, FURNACE	M5 - GR9S920805CNAA
0130F00010	FLAME SENSOR	M6 - GR9S921004CNAA
0151M00105	GAS VALVE	M7 - GR9S921005CNAA
0257F20151	HEAT EXCHANGER ASSY (M3)	M8 - GR9S921205DNAA
0257F20150	HEAT EXCHANGER ASSY (M2)	
0257F20149	HEAT EXCHANGER ASSY (M1)	
0257F20153	HEAT EXCHANGER ASSY (M6, M7)	
0257F20152	HEAT EXCHANGER ASSY (M4, M5)	
0257F20154	HEAT EXCHANGER ASSY (M8)	
0130F00008	IGNITOR-SINI 17 SEC	
20162904	LIMIT, PRIMARY (M8)	
20162907	LIMIT, PRIMARY (M7)	
20162906	LIMIT, PRIMARY (M3)	
20162903	LIMIT, PRIMARY (M1, M5, M6)	
0130F00038	LIMIT, PRIMARY, 120, LT BLUE (QTY 2)	
0130F00036	LIMIT, PRIMARY, 180, PINK (M2, M4)	
0130F00123	LIMIT, RESET MAN (M2)	
10123538	LIMIT-MAN-TAN (M1)	
10123529	LIMIT-RESET MAN-GREEN (M8)	
10123539	LIMIT-RESET MAN-ORANGE (M3, M5, M6, M7)	
10123534	LIMIT-RESET MAN-ORANGE (M4)	
0131F00334M	MOTOR 1 HP W/O CONTROLLER (M5, M7, M8)	
0131F00332M	MOTOR 1/2 HP W/O CONTROLLER (M1, M2, M3)	
0131F00333M	MOTOR 3/4 HP W/O CONTROLLER (M4, M6)	
0171M00008	MOTOR, ID BLOWER (M1)	
0131F00261	MOTOR, PROGRAM (M1)	
0131F00268	MOTOR, PROGRAM (M8)	
0131F00267	MOTOR, PROGRAM (M7)	
0131F00266	MOTOR, PROGRAM (M6)	
0131F00265	MOTOR, PROGRAM (M5)	
0131F00264	MOTOR, PROGRAM (M4)	
0131F00263	MOTOR, PROGRAM (M3)	
0131F00262	MOTOR, PROGRAM (M2)	
0171M00001	MOTOR-ID, BLOWER (M2, M3, M4, M5, M6, M7, M8)	
0130F00641	PRESSURE SWITCH (M1)	
0130F00442	SWITCH, PRESSURE (M2, M4, M5, M8)	
0130F00441	SWITCH, PRESSURE (M3, M6, M7)	
10690402	SWITCH-INTERLOCK	
0130M00140	TRANSFORMER 120V TO 24V, 40VA	
0150M00042	WHEEL, BLOWER (10 X 10) (M4, M6)	
0150M00043	WHEEL, BLOWER (10 X 8) (M2, M3)	
0150M00061	WHEEL,BLOWER (M1)	

SPECIAL PARTS

0161F00086 NAMEPLATE, GOODMAN

Cabinet Assembly

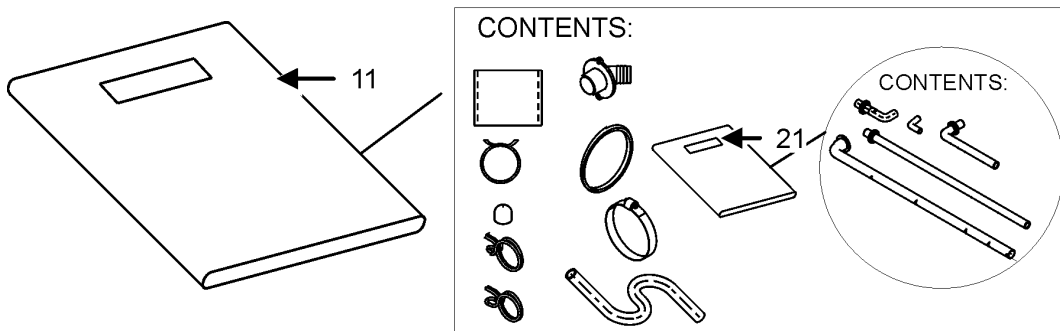
CABINET ASSEMBLY



CABINET ASSEMBLY MAY DIFFER FROM WHAT IS SHOWN

DRAIN TRAP ASSEMBLY

DRAIN KIT ASSEMBLY



Cabinet Assembly

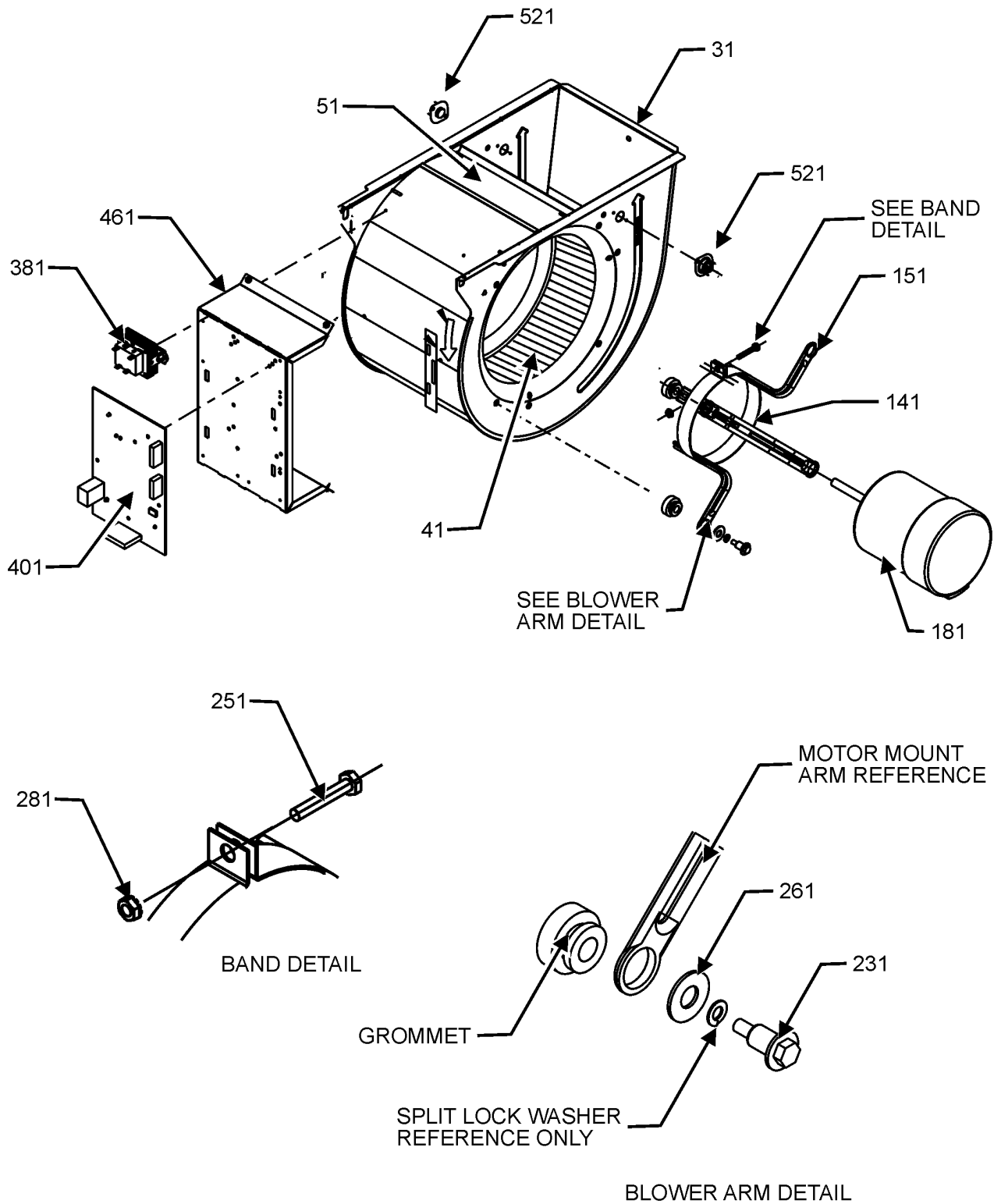
Ref. Part No: No:	Description:	Ref. Part No: No:	Description:
Image 1:			
11	0270F05402		DRAIN KIT ASSY
21	0270F05402		DRAIN KIT ASSY
111	0154F00024		GASKET (QTY 2)
121	0154F00025		GASKET (QTY 2)
141	0161F00046		DRAIN TRAP
191	0121F00291DG		DOOR, ACCESS 17.5 PNT (M2, M3)
191	0121F00292DG		DOOR, ACCESS 21 PNT (M4, M5, M6, M7)
191	0121F00293DG		DOOR, ACCESS 24.5 PNT (M8)
191	0121F00674DG		PNT, DOOR, ACCESS 14" (M1)
201	0121F00288DG		DOOR, BLOWER 17.5 PNT (M2, M3)
201	0121F00289DG		DOOR, BLOWER 21 PNT (M4, M5, M6, M7)
201	0121F00290DG		DOOR, BLOWER 24.5 PNT (M8)
201	0121F00672DG		PNT, DOOR, BLOWER 14" (M1)
281	B1392139		VIEW PORT BUSHING-BLOWER DOOR (QTY 2)
311	0154F00020		GASKET, DECK (M2, M3)
311	0154F00021		GASKET, DECK (M4, M5, M6, M7)
311	0154F00022		GASKET, DECK (M8)
311	0154F00063		GASKET, DECK (M1)
341	0164F00017		HOSE-ELBOW/TRAP
351	0164F00020		DRAIN HOSE (M1)
351	0164F00006		HOSE, COVER/TRAP (M8)
351	0164F00024		HOSE, COVER/TRAP (M2, M3, M4, M5, M6, M7)
451	M0501301		PIPE GROMMET
491	M0570808		BUTTON PLUG (QTY 3)
501	M0570806		BUTTON PLUG
511	M0570807		BUTTON PLUG
521	0161M00027		PLUG, HOLE (M1, M2, M3, M6, M7)
601	B1392021		PLASTIC PLUG, 1" (2713-BLK) (QTY 4)
741	B1392104		UNIVERSAL BUSHING UB 875
NS	M0310345		BUTTON PLUG (QTY 2)
NS	0154F00065		GASKET (M1)
NS	20179307		GASKET (M8)
NS	20179309		GASKET (M2, M3)
NS	20179310		GASKET (M4, M5, M6, M7)
NS	0163M00319		HEX NUT-INSERT (QTY 3)
NS	0161F00086		NAMEPLATE, GOODMAN
NS	M0273904		RETAINER-SCREW (QTY 3)
NS	M0209730		SCREW-DECORATIVE (QTY 3)

Expanded Model Nomenclature

M1 - GR9S920403ANAA
M2 - GR9S920603BNAA
M3 - GR9S920803BNAA
M4 - GR9S920804CNAA
M5 - GR9S920805CNAA
M6 - GR9S921004CNAA
M7 - GR9S921005CNAA
M8 - GR9S921205DNAA

Blower Assembly

BLOWER ASSEMBLY



BLOWER ASSEMBLY MAY DIFFER FROM WHAT IS SHOWN

Blower Assembly

Ref. Part No: No:	Description:	Ref. Part No: No:	Description:
----------------------	--------------	----------------------	--------------

Image 1:

31	0271F00462	BLOWER HOUSING ASSY (M2, M3)
31	0271F00463	BLOWER HOUSING ASSY (M4, M6)
31	0271F00323	BLOWER HSG ASSY (M1)
31	0271F00507	MORRISON 11 X 10 BLOWER (M5, M7)
31	0271F00508	MORRISON 11 X 11 BLOWER (M8)
41	0150M00042	WHEEL, BLOWER (10 X 10) (M4, M6)
41	0150M00043	WHEEL, BLOWER (10 X 8) (M2, M3)
41	0150M00061	WHEEL,BLOWER (M1)
51	764741	BLWR BLK-OFF,10X10 (M4, M6)
51	764739	BLWR BLK-OFF,10X6 (M1)
51	764740	BLWR BLK-OFF,10X8 (M2, M3)
141	0121M00039	MOUNT BAND, MOTOR (HEAVY DUTY)
151	0163M00538	MOUNT ARM, MOTOR (QTY 3)
181	0131F00334M	MOTOR 1 HP W/O CONTROLLER (M5, M7, M8)
181	0131F00332M	MOTOR 1/2 HP W/O CONTROLLER (M1, M2, M3)
181	0131F00333M	MOTOR 3/4 HP W/O CONTROLLER (M4, M6)
181	0131F00261	MOTOR, PROGRAM (M1)
181	0131F00262	MOTOR, PROGRAM (M2)
181	0131F00263	MOTOR, PROGRAM (M3)
181	0131F00264	MOTOR, PROGRAM (M4)
181	0131F00265	MOTOR, PROGRAM (M5)
181	0131F00266	MOTOR, PROGRAM (M6)
181	0131F00267	MOTOR, PROGRAM (M7)
181	0131F00268	MOTOR, PROGRAM (M8)
231	M0250565	TC SCREW 1.25" (QTY 3)
251	0163M00320	HEX HEAD ALL THREAD TAP BOLT
261	B1392918	WASHER, FLAT 1/4 ID X 1 OD (QTY 3)
281	B1393800	LOCKNUT, NYLON, INSERT 1/4, 20
381	0130M00140	TRANSFORMER 120V TO 24V, 40VA
401	PCBBF301V007	CIRCUIT BOARD, FURNACE
461	0121F00802	MOUNTING PANEL, CONTROLS
521	0130F00038	LIMIT, PRIMARY, 120, LT BLUE (QTY 2)
NS	0159F00160	CTM, MOTOR HARNESS
NS	M0282015	KEPS NUT (M5, M7, M8)
NS	B1392021	PLASTIC PLUG, 1" (2713-BLK) (QTY 4)
NS	0163M00279	SCREW #6 X .375 SELF DRILL (M5, M7, M8)
NS	B1392820	WASHER, SPLIT LOCK 1/4 BZ (M5, M7, M8)
NS	0259F00024	WIRE HARNESS-BLOWER

Expanded Model Nomenclature

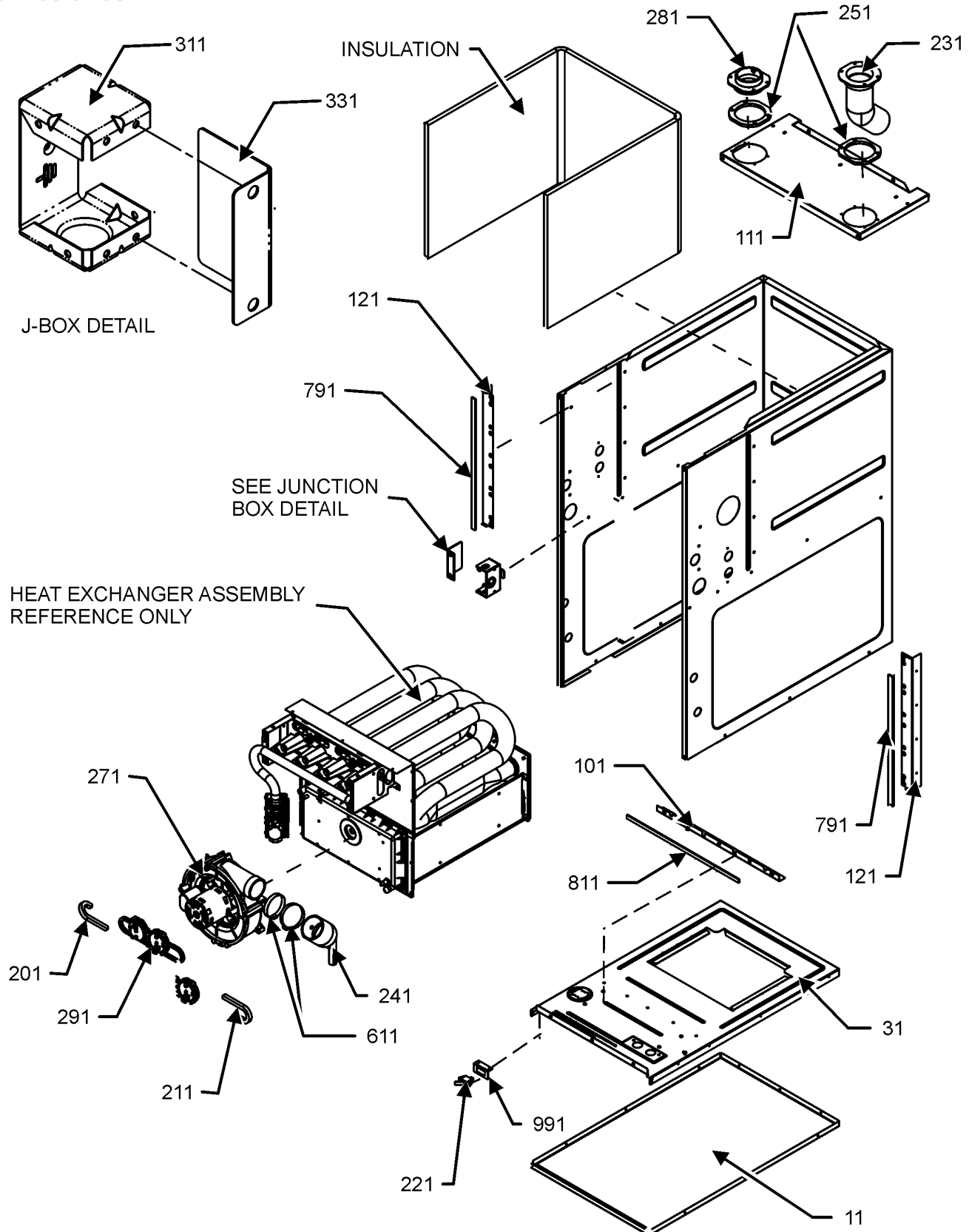
M1 - GR9S920403ANAA
M2 - GR9S920603BNAA
M3 - GR9S920803BNAA
M4 - GR9S920804CNAA
M5 - GR9S920805CNAA
M6 - GR9S921004CNAA
M7 - GR9S921005CNAA
M8 - GR9S921205DNAA

To replace the Shaft end of motor order:

0131F00332M	MOTOR 1/2 HP W/O CONTROLLER
0131F00333M	MOTOR 3/4 HP W/O CONTROLLER
0131F00334M	MOTOR 1 HP W/O CONTROLLER

Chassis Assembly

CHASSIS ASSEMBLY



CHASSIS ASSEMBLY MAY DIFFER FROM WHAT IS SHOWN

Chassis Assembly

Ref. Part

No: No:

Description:

Ref. Part

No: No:

Description:

Image 1:

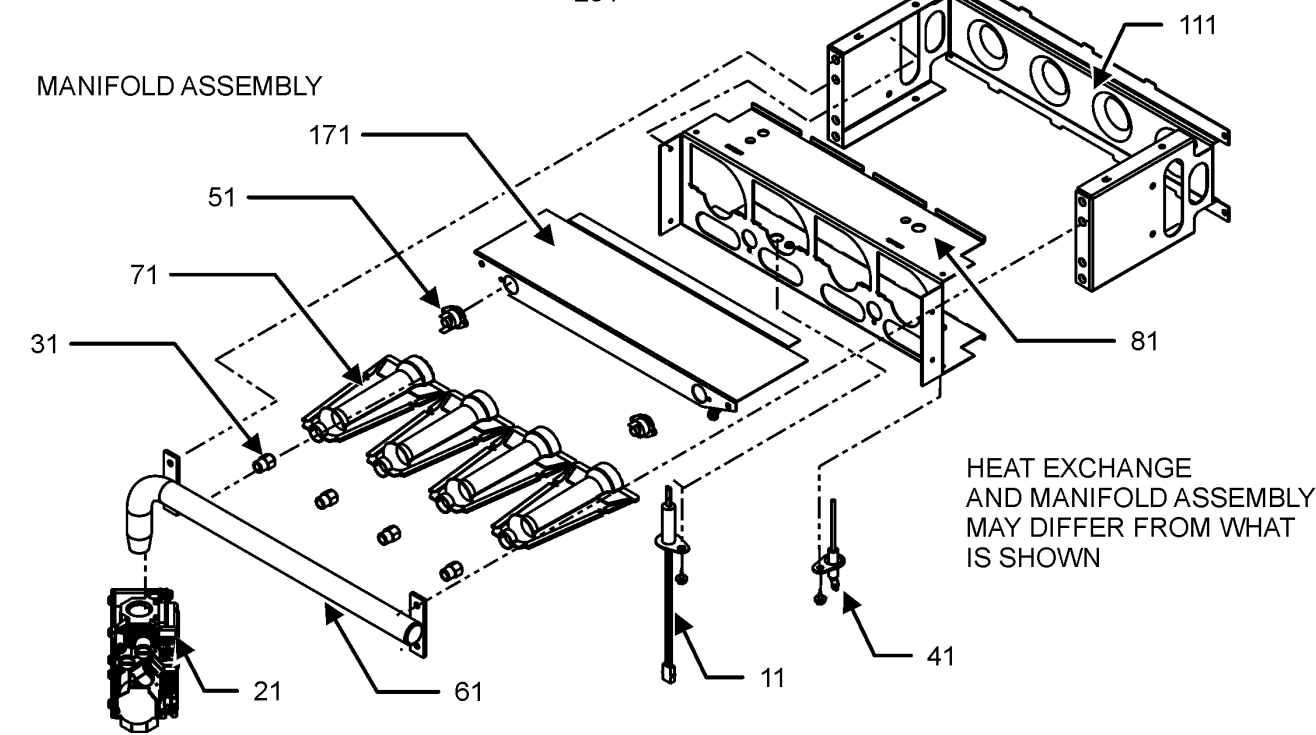
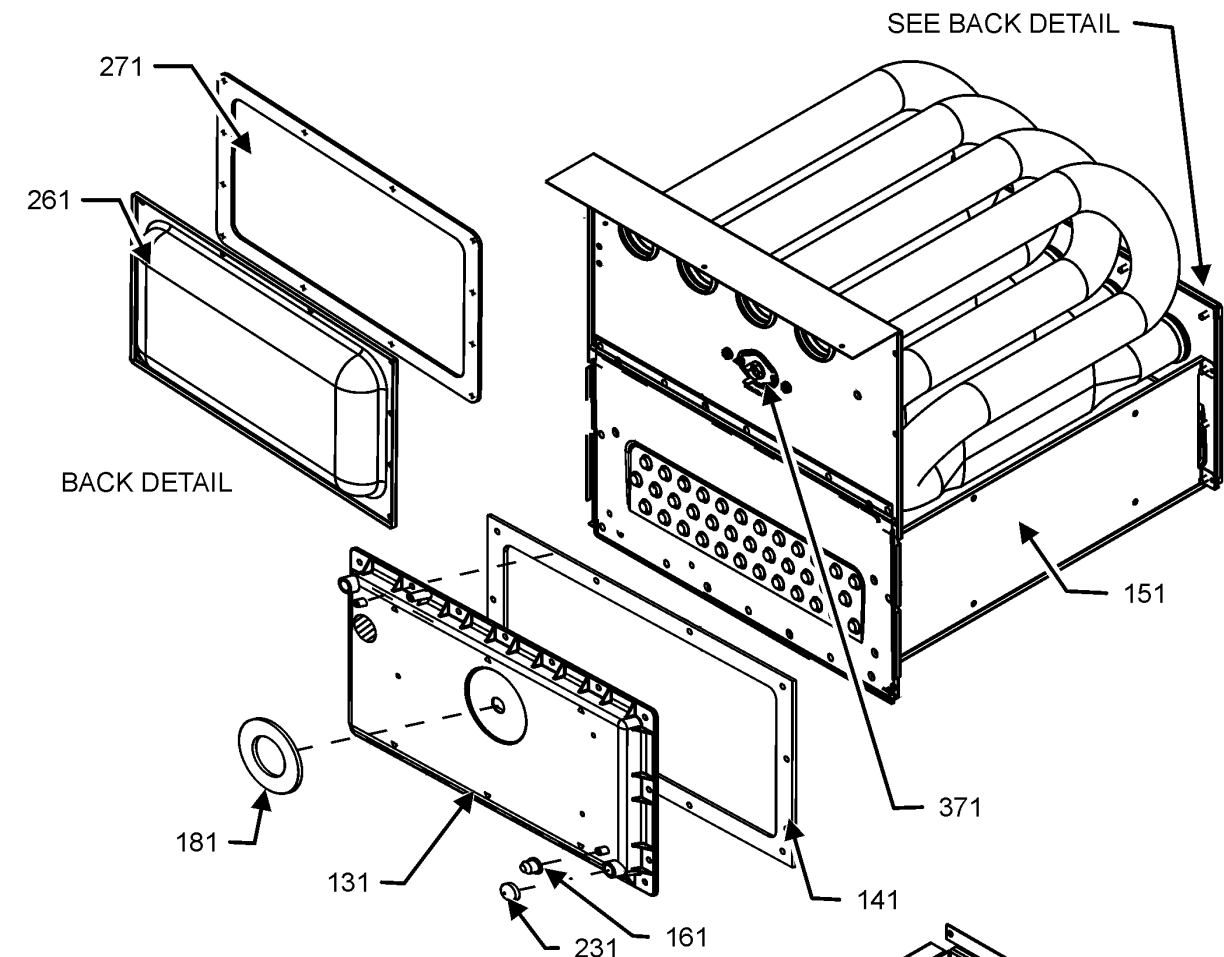
11	0121F00530DG	BASEPAN, 17.5 (M2, M3)
11	0121F00531DG	BASEPAN, 21 PNT (M4, M5, M6, M7)
11	0121F00532DG	BASEPAN, 24.5 PNT (M8)
11	0121F00664DG	BASEPAN, 14 PNT (M1)
31	0121F00766	DECK- BLOWER 17.5" (M2, M3)
31	0121F00767	DECK- BLOWER 21" (M4, M5, M6, M7)
31	0121F00768	DECK- BLOWER 24.5" (M8)
31	0121F00663	DECK, BLOWER 14" (M1)
101	0121F00314	ANGLE, DECK (M2, M3)
101	0121F00315	ANGLE, DECK (M4, M5, M6, M7)
101	0121F00316	ANGLE, DECK (M8)
101	0121F00661	ANGLE, DECK (M1)
111	0121F00279DG	PAINTED TOP, FURNACE 17.5 (M2, M3)
111	0121F00280DG	PAINTED TOP, FURNACE 21 (M4, M5, M6, M7)
111	0121F00281DG	PAINTED TOP, FURNACE 24.5 (M8)
111	0121F00662DG	PNT, FURNACE TOP 14" (M1)
121	0121F00313	ANGLE, SIDE (QTY 2)
201	0164M00118	HOSE- PRESSURE SW 10" (M1)
201	0164M00117	HOSE- PRESSURE SW 8" (M2, M3, M4, M5, M6, M7, M8)
211	0164M00119	HOSE- PRESSURE SW 12"
221	10690402	SWITCH-INTERLOCK
231	0164F00002	FLUE PIPE W/BEND
241	0164F00025	ELBOW-FLUE, UPFLOW
251	0154F00041	FRESH AIR GASKET (QTY 2)
271	0171M00008	MOTOR, ID BLOWER (M1)
271	0171M00001	MOTOR-ID, BLOWER (M2, M3, M4, M5, M6, M7, M8)
281	0161F00037	COUPLING
291	0130F00641	PRESSURE SWITCH (M1)
291	0130F00441	SWITCH, PRESSURE (M3, M6, M7)
291	0130F00442	SWITCH, PRESSURE (M2, M4, M5, M8)
311	0121F20060	BOX, JUNCTION 90%
331	0121F20061	BOX, JUNCTION 80%
611	0163M00460	CLAMP-HOSE (QTY 2)
791	0154F00015	GASKET (QTY 2)
811	0154F00014	GASKET (M2, M3)
811	0154F00016	GASKET (M4, M5, M6, M7)
811	0154F00064	GASKET (M1)
811	20194607	GASKET (M8)
991	0121F00389	BRACKET, DOOR SWITCH
NS	0154F00041	FRESH AIR GASKET (QTY 2)
NS	0160F00025	INSULATION, HT EXCHANGER (M1)
NS	0160F00015	INSULATION, HT EXCHANGER 17.5" (M2, M3)
NS	0160F00016	INSULATION, HT EXCHANGER 21" (M4, M5, M6, M7)
NS	0160F00017	INSULATION, HT EXCHANGER 24.5" (M8)
NS	M0326804	PLUG-TUBE
NS	0159F20009	WIRE HARNESS (M1)
NS	0159F20011	WIRE HARNESS (M2, M3, M4, M5, M6, M7, M8)

Expanded Model Nomenclature

M1 - GR9S920403ANAA
M2 - GR9S920603BNAA
M3 - GR9S920803BNAA
M4 - GR9S920804CNAA
M5 - GR9S920805CNAA
M6 - GR9S921004CNAA
M7 - GR9S921005CNAA
M8 - GR9S921205DNAA

Heat Exchange and Manifold Assembly

HEAT EXCHANGE ASSEMBLY



Ref. Part No: No:	Description:	Ref. Part No: No:	Description:		
Image 1:		Image 1:			
11	0130F00008	IGNITOR-SINI 17 SEC	271	0154F00039	GASKET, REAR CVR (M8)
21	0151M00105	GAS VALVE	371	20162903	LIMIT, PRIMARY (M1, M5, M6)
31	10716005	ORIFICE (QTY 2)	371	20162904	LIMIT, PRIMARY (M8)
41	0130F00010	FLAME SENSOR	371	20162906	LIMIT, PRIMARY (M3)
51	0130F00123	LIMIT, RESET MAN (M2)	371	20162907	LIMIT, PRIMARY (M7)
51	10123538	LIMIT-MAN-TAN (M1)	371	0130F00036	LIMIT, PRIMARY, 180, PINK (M2, M4)
51	10123529	LIMIT-RESET MAN-GREEN (M8)	NS	0121F00582	INSULATION, RETAINER (M1)
51	10123534	LIMIT-RESET MAN-ORANGE (M4)	NS	0121F00583	INSULATION, RETAINER (M2, M3)
51	10123539	LIMIT-RESET MAN-ORANGE (M3, M5, M6, M7)	NS	0121F00584	INSULATION, RETAINER (M4, M5, M6, M7)
61	0163F00007	MANIFOLD (M1)	NS	0121F00585	INSULATION, RETAINER (M8)
61	0163F00008	MANIFOLD (M2)	NS	0121F00439	PRIMARY LIMIT-HEAT SHIELD
61	0163F00009	MANIFOLD (M4, M5)	NS	0121F00355	SHIELD, COIL (QTY 2)
61	0163F00010	MANIFOLD (M6, M7)	Expanded Model Nomenclature		
61	0163F00011	MANIFOLD (M8)	<div>M1 - GR9S920403ANAA M2 - GR9S920603BNAA M3 - GR9S920803BNAA M4 - GR9S920804CNAA M5 - GR9S920805CNAA M6 - GR9S921004CNAA M7 - GR9S921005CNAA M8 - GR9S921205DNAA</div>		
61	0163F00014	MANIFOLD (M3)			
71	0163F00017	BECKETT BURNER (QTY 2)			
81	0121F00456	BRACKET-BURNER 2 (M1)			
81	0121F00455	BRACKET-BURNER 3 (M2)			
81	0121F00454	BRACKET-BURNER 4 (M3, M4, M5)			
81	0121F00453	BRACKET-BURNER 5 (M6, M7)			
81	0121F00451	BRACKET-BURNER 6 (M8)			
111	0121F00469	ORIFICE BRACKET-BURNER 2 (M1)			
111	0121F00468	ORIFICE BRACKET-BURNER 3 (M2)			
111	0121F00467	ORIFICE BRACKET-BURNER 4 (M3, M4, M5)			
111	0121F00466	ORIFICE BRACKET-BURNER 5 (M6, M7)			
111	0121F00465	ORIFICE BRACKET-BURNER 6 (M8)			
131	0161F00016	COVER, FRONT (M3)			
131	0161F00018	COVER, FRONT (M4, M5)			
131	0161F00027	COVER, FRONT (M6, M7)			
131	0161F00028	COVER, FRONT (M8)			
131	0161F00031	COVER, FRONT (M2)			
131	0161F00076	COVER, FRONT (M1)			
141	0154F00026	GASKET FRONT COVER (M2, M3)			
141	0154F00030	GASKET FRONT COVER (M4, M5, M6, M7)			
141	0154F00034	GASKET FRONT COVER (M8)			
141	0154F00062	GASKET FRONT COVER (M1)			
151	0257F20149	HEAT EXCHANGER ASSY (M1)			
151	0257F20150	HEAT EXCHANGER ASSY (M2)			
151	0257F20151	HEAT EXCHANGER ASSY (M3)			
151	0257F20152	HEAT EXCHANGER ASSY (M4, M5)			
151	0257F20153	HEAT EXCHANGER ASSY (M6, M7)			
151	0257F20154	HEAT EXCHANGER ASSY (M8)			
161	M0326804	TUBE PLUG			
171	0121F00540	SHEILD, BURNER (M2)			
171	0121F00541	SHEILD, BURNER (M3, M4, M5)			
171	0121F00542	SHEILD, BURNER (M6, M7)			
171	0121F00543	SHEILD, BURNER (M8)			
171	0121F00755	SHIELD, BURNER (M1)			
181	0154F00043	GASKET ID BLOWER			
231	A1781105	CAP-VINYL .500			
261	0121F00317	COVER, REAR (M2, M3)			
261	0121F00318	COVER, REAR (M4, M5, M6, M7)			
261	0121F00319	COVER, REAR (M8)			
261	0121F00670	COVER, REAR (M1)			
271	0154F00058	GASKET REAR CVR (M1)			
271	0154F00037	GASKET, REAR CVR (M2, M3)			
271	0154F00038	GASKET, REAR CVR (M4, M5, M6, M7)			