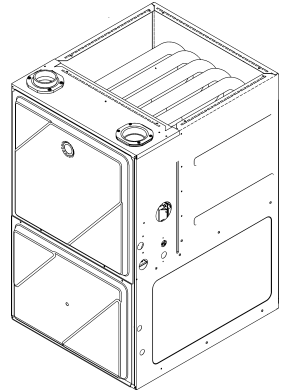




REPAIR PARTS

GD9T96 EEM Counter Flow Furnace

GD9T960403BNAA
GD9T960603BNAA
GD9T960803BNAA
GD9T961005CNAA



This manual is to be used by qualified technicians only.

© 2024 Goodman Manufacturing Company, L.P. ♦ 19001 Kermier Rd. ♦ Waller, TX 77484

Important Information

Index

Functional Parts List	3
Illustration and Parts	4 - 11

Views shown are for parts illustrations only, not servicing procedures.

Text Codes:

AR - As Required

NA - Not Available

NS - Not Shown

00000000 - See Note

QTY - Quantity Example (QTY 3) (If Quantity not shown, Quantity = 1)

M - Model Example (M1) (If M Code not shown, then part is used on all Models)

Expanded Model Nomenclature:

Example

M1 - Model#1

M2 - Model#2

M3 - Model#3

Goodman Manufacturing Company, L.P. is not responsible for personal injury or property damage resulting from improper service. Review all service information before beginning repairs.

Warranty service must be performed by an authorized technician, using authorized factory parts. If service is required after the warranty expires, Goodman Manufacturing Company, L.P. also recommends contacting an authorized technician and using authorized factory parts.

Goodman Manufacturing Company, L.P. reserves the right to discontinue, or change at any time, specifications or designs without notice or without incurring obligations.

For assistance within the U.S.A. contact:

Homeowner Support

Goodman Manufacturing Company, L.P.

19001 Kermier Road

Waller, Texas 77484

877-254-4729-Telephone

713-863-2382-Facsimile

For assistance outside the U.S.A. contact:

International Division

Goodman Manufacturing Company, L.P.

19001 Kermier Road

Waller, Texas 77484

713-861-2500-Telephone

713-863-2382-Facsimile

Functional Parts

Part

No: Description:

0130F00038	AUX LIMIT - LT BLUE 120° (QTY 2)
0163F00017	BECKETT BURNER (QTY 2)
0130F00010	FLAME SENSOR
0151M00027	GAS VALVE
0257F20126	HEAT EXCHANGER ASSY (M4)
0257F20125	HEAT EXCHANGER ASSY (M3)
0257F20124	HEAT EXCHANGER ASSY (M2)
0257F20123	HEAT EXCHANGER ASSY (M1)
0130F00008	IGNITOR-SINI 17 SEC
20162904	LIMIT, PRIMARY (M3)
20162906	LIMIT, PRIMARY (M1, M2, M4)
0130F00123	LIMIT, RESET MAN (M4)
10123538	LIMIT-MAN-LIGHT GREEN (M2)
10123533	LIMIT-RESET MAN-YELLOW (M1, M3)
0271F00507	MORRISON 11 X 10 BLOWER (M4)
0271F00506	MORRISON 11 X 8 BLOWER (M2, M3)
0131F00334M	MOTOR 1 HP W/O CONTROLLER (M4)
0131F00332M	MOTOR 1/2 HP W/O CONTROLLER (M1, M2, M3)
0131F00229	MOTOR PROGRAM (M2)
0131F00228	MOTOR PROGRAM (M1)
0131F00231	MOTOR PROGRAM (M4)
0131F00230	MOTOR PROGRAM (M3)
0171M00002	MOTOR-ID, BLOWER
PCBBF302V010	PCB, CIRCUIT BOARD
0130F00429	PRESSURE SWITCH
0130F00435	SWITCH, PRESSURE (M1, M2)
0130F00436	SWITCH, PRESSURE (M3)
0130F00434	SWITCH, PRESSURE (M4)
10690402	SWITCH-INTERLOCK
0130M00140	TRANSFORMER 120V TO 24V, 40VA

SPECIAL PARTS

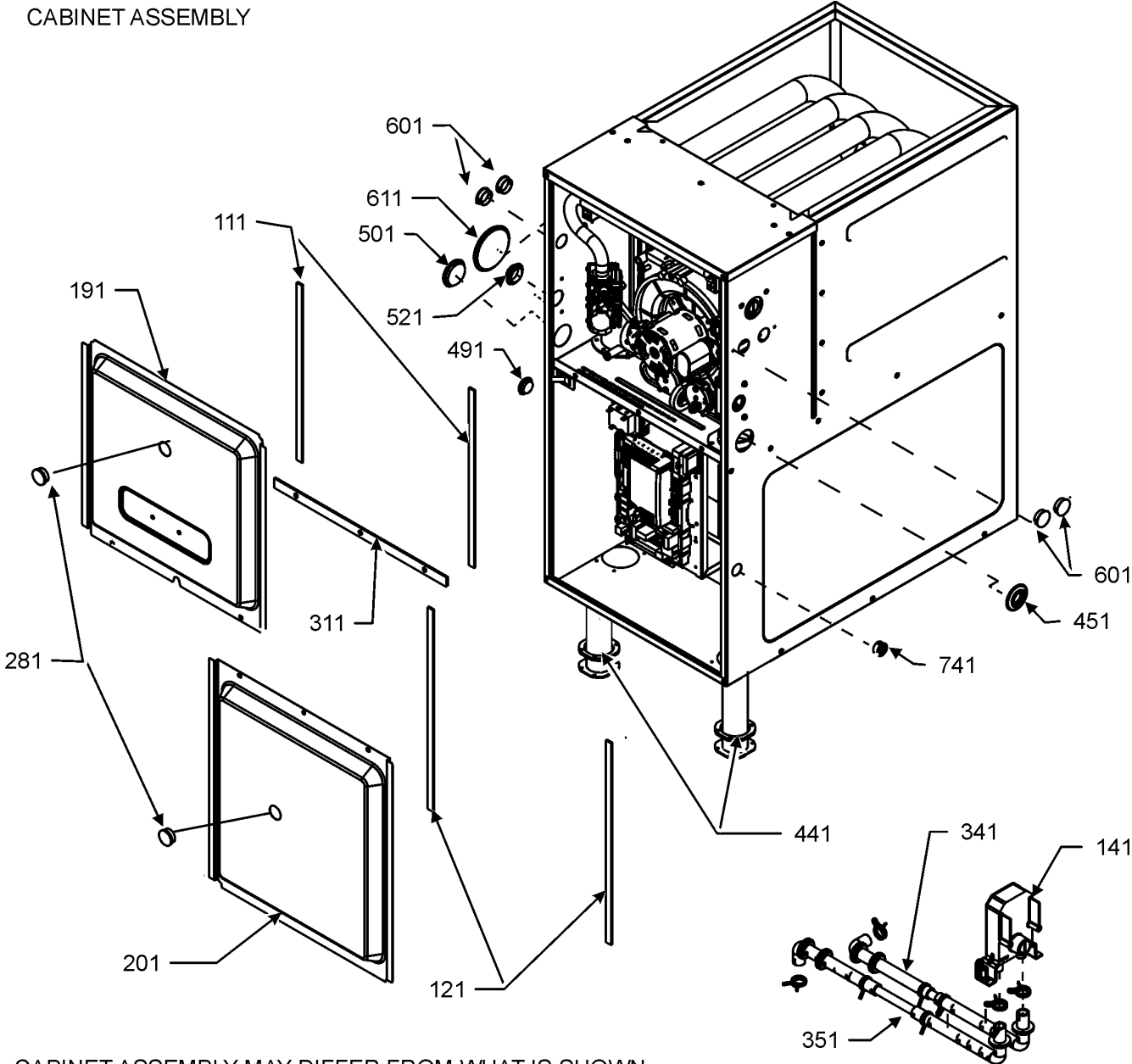
0161F00086 NAMEPLATE, GOODMAN

Expanded Model Nomenclature

M1 - GD9T960403BNAA
M2 - GD9T960603BNAA
M3 - GD9T960803BNAA
M4 - GD9T961005CNAA

Cabinet Assembly

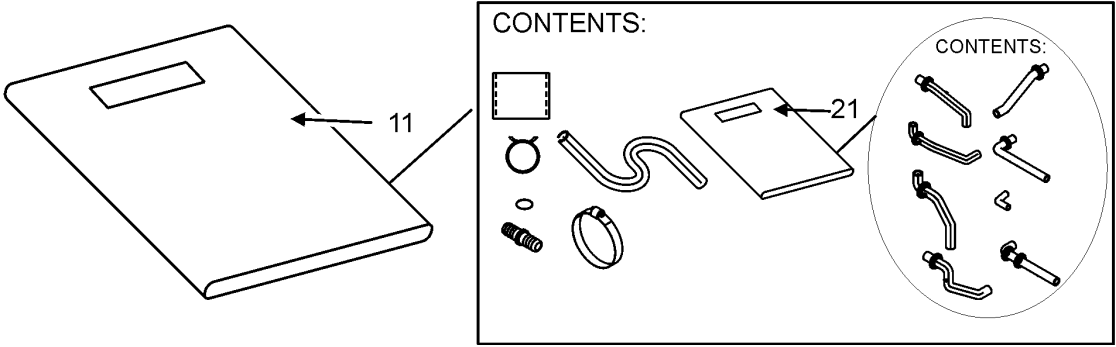
CABINET ASSEMBLY



CABINET ASSEMBLY MAY DIFFER FROM WHAT IS SHOWN

DRAIN TRAP ASSEMBLY

DRAIN KIT ASSEMBLY



Cabinet Assembly

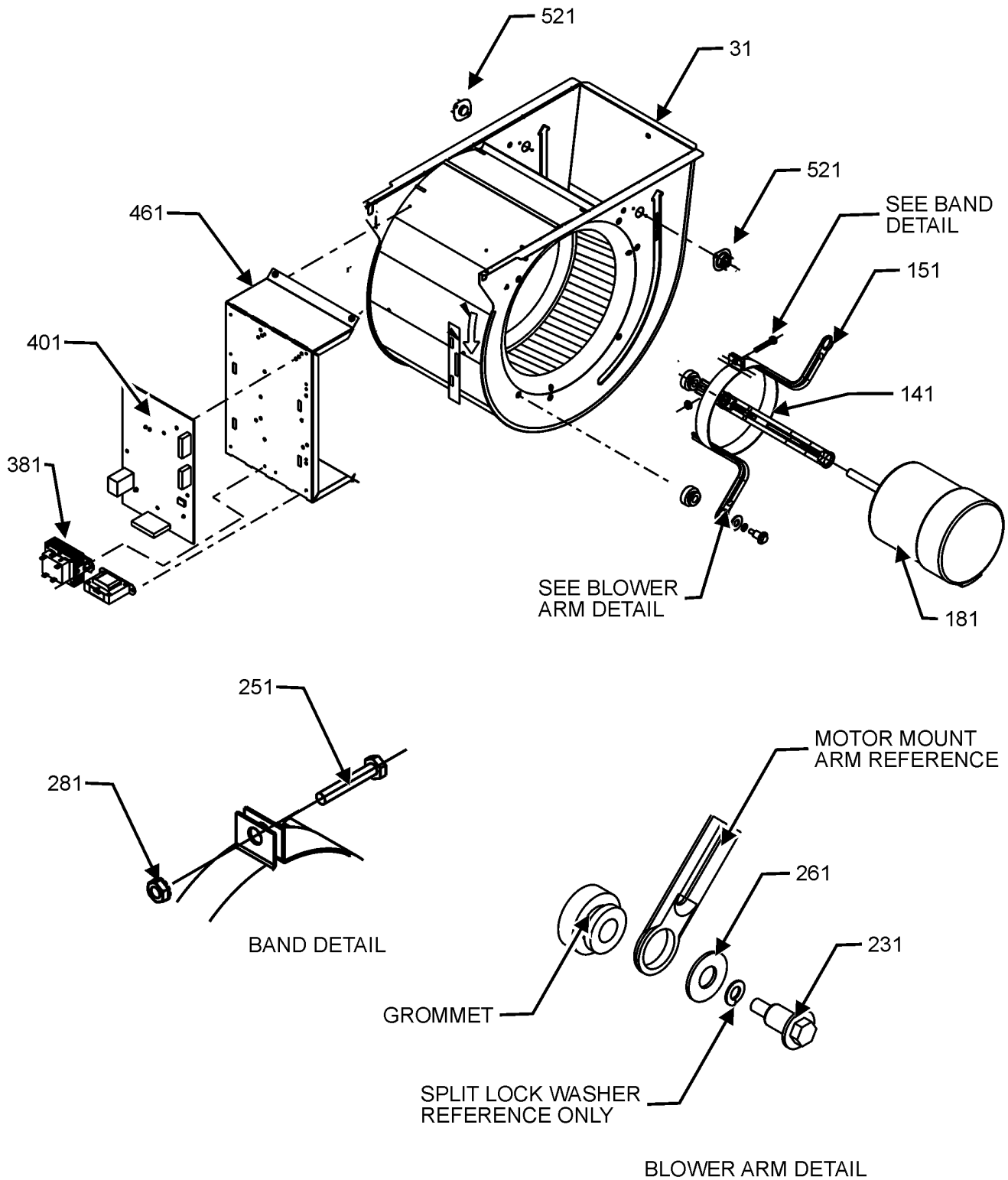
Ref. Part No: No:	Description:	Ref. Part No: No:	Description:
Image 1:			
11	0270F05403		DRAIN KIT ASSY
21	0270F05403		DRAIN KIT ASSY
111	0154F00024		GASKET (QTY 2)
121	0154F00025		GASKET (QTY 2)
141	0161F00046		DRAIN TRAP
191	0121F00291DG		DOOR, ACCESS 17.5 PNT (M1, M2, M3)
191	0121F00292DG		DOOR, ACCESS 21 PNT (M4)
201	0121F00288DG		DOOR, BLOWER 17.5 PNT (M1, M2, M3)
201	0121F00289DG		DOOR, BLOWER 21 PNT (M4)
281	B1392139		VIEW PORT BUSHING-BLOWER DOOR (QTY 2)
311	0154F00020		GASKET, DECK (M1, M2, M3)
311	0154F00021		GASKET, DECK (M4)
341	0270F03125		CF DRAIN TUBE ASSY (M1, M2, M3)
341	0270F03515		CF DRAIN TUBE ASSY (M4)
351	0270F03126		CF DRAIN TUBE ASSY (M4)
351	0270F03514		CF DRAIN TUBE ASSY (M1, M2, M3)
441	0161F00064		PIPE, STRAIGHT CF (QTY 2)
451	M0501301		PIPE GROMMET
491	M0570808		BUTTON PLUG
501	M0570806		BUTTON PLUG
511	M0570807		BUTTON PLUG
521	0161M00027		PLUG, HOLE
601	B1392021		PLASTIC PLUG, 1" (2713-BLK) (QTY 4)
741	B1392104		UNIVERSAL BUSHING UB 875
NS	M0310345		BUTTON PLUG (QTY 2)
NS	20179309		GASKET (M1, M2, M3)
NS	20179310		GASKET (M4)
NS	0163M00319		HEX NUT-INSERT (QTY 3)
NS	0161F00086		NAMEPLATE, GOODMAN
NS	M0273904		RETAINER-SCREW (QTY 3)
NS	M0209730		SCREW-DECORATIVE (QTY 3)

Expanded Model Nomenclature

M1 - GD9T960403BNAA
M2 - GD9T960603BNAA
M3 - GD9T960803BNAA
M4 - GD9T961005CNAA

Blower Assembly

BLOWER ASSEMBLY



BLOWER ASSEMBLY MAY DIFFER FROM WHAT IS SHOWN

Blower Assembly

Ref. Part No: No:	Description:	Ref. Part No: No:	Description:
----------------------	--------------	----------------------	--------------

Image 1:

31	0271F00507	MORRISON 11 X 10 BLOWER (M4)
31	0271F00506	MORRISON 11 X 8 BLOWER (M2, M3)
141	0121M00039	MOUNT BAND, MOTOR (HEAVY DUTY)
151	0163M00538	MOUNT ARM, MOTOR (QTY 3)
181	0131F00334M	MOTOR 1 HP W/O CONTROLLER (M4)
181	0131F00332M	MOTOR 1/2 HP W/O CONTROLLER (M1, M2, M3)
181	0131F00228	MOTOR PROGRAM (M1)
181	0131F00229	MOTOR PROGRAM (M2)
181	0131F00230	MOTOR PROGRAM (M3)
181	0131F00231	MOTOR PROGRAM (M4)
231	M0250565	TC SCREW 1.25" (QTY 3)
251	0163M00320	HEX HEAD ALL THREAD TAP BOLT
261	B1392918	WASHER, FLAT 1/4 ID X 1 OD (QTY 3)
281	B1393800	LOCKNUT, NYLON, INSERT 1/4, 20
381	0130M00140	TRANSFORMER 120V TO 24V, 40VA
401	PCBBF302V010	PCB, CIRCUIT BOARD
461	0121F00802	MOUNTING PANEL, CONTROLS
521	0130F00038	AUX LIMIT - LT BLUE 120° (QTY 2)
NS	0159F00160	CTM, MOTOR HARNESS
NS	M0282015	KEPS NUT (M4)
NS	B1392021	PLASTIC PLUG, 1" (2713-BLK) (QTY 4)
NS	0163M00279	SCREW #6 X .375 SELF DRILL (M4)
NS	B1392820	WASHER, SPLIT LOCK 1/4 BZ (M4)
NS	0259F00024	WIRE HARNESS-BLOWER

Expanded Model Nomenclature

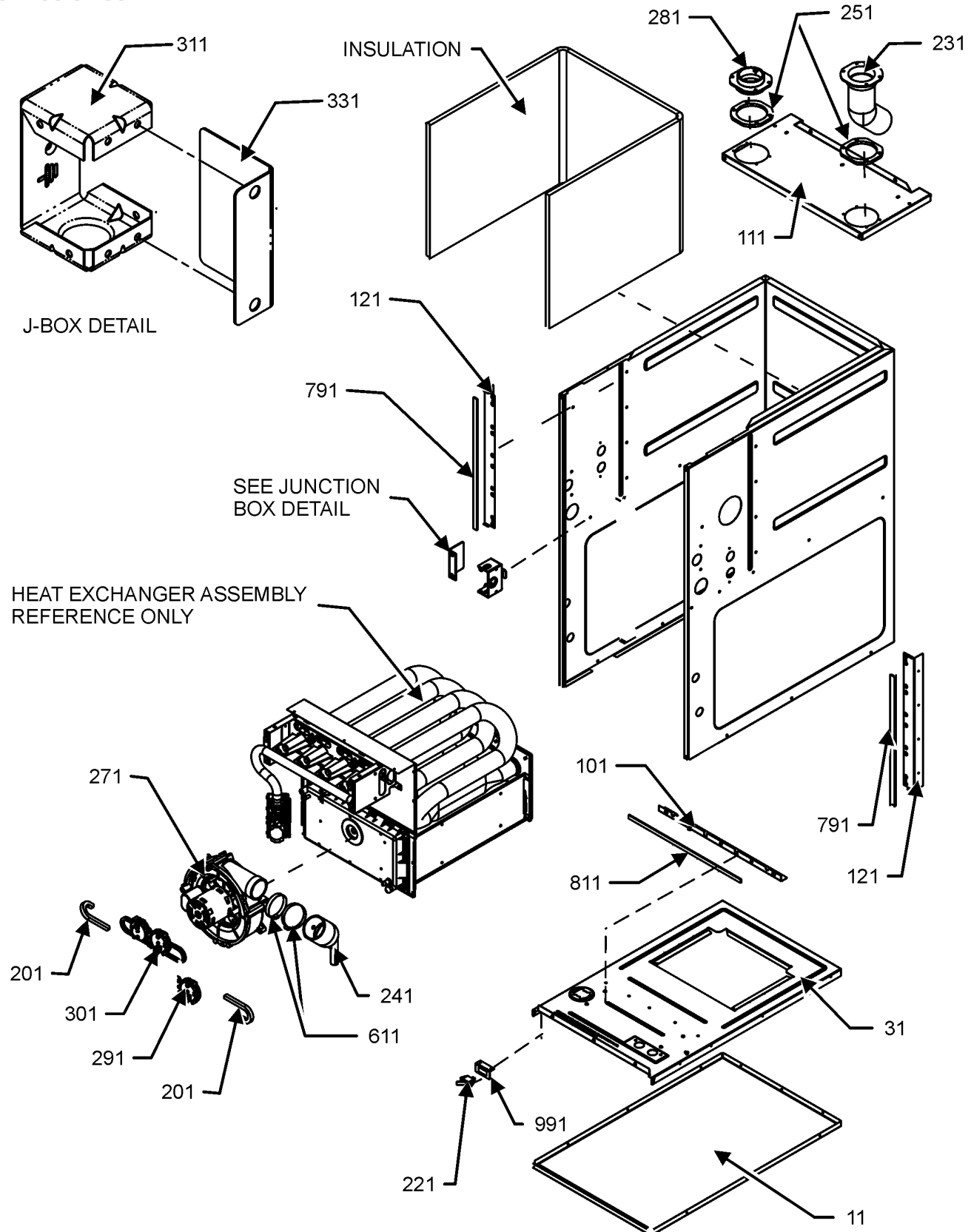
M1 - GD9T960403BNAA M2 - GD9T960603BNAA M3 - GD9T960803BNAA M4 - GD9T961005CNAA
--

To replace the Shaft end of motor order:

0131F00332M	MOTOR 1/2 HP W/O CONTROLLER
0131F00333M	MOTOR 3/4 HP W/O CONTROLLER
0131F00334M	MOTOR 1 HP W/O CONTROLLER

Chassis Assembly

CHASSIS ASSEMBLY



CHASSIS ASSEMBLY MAY DIFFER FROM WHAT IS SHOWN

Chassis Assembly

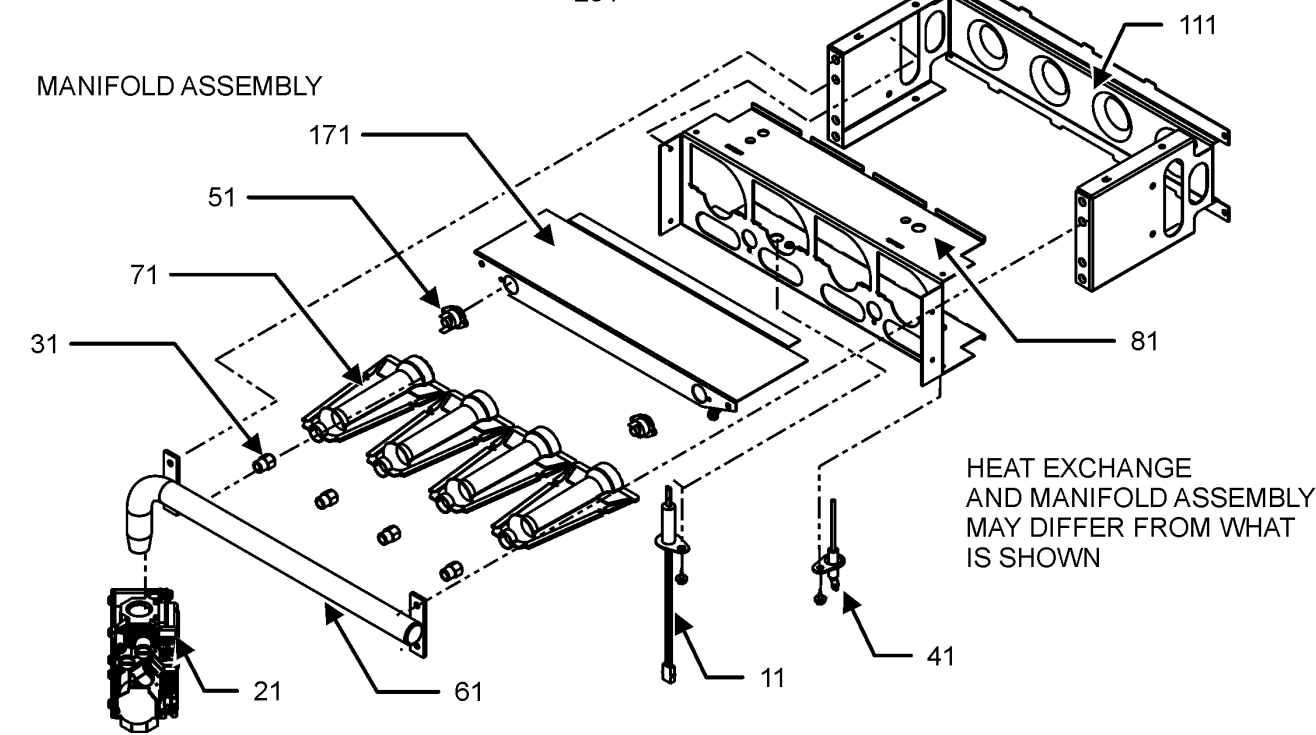
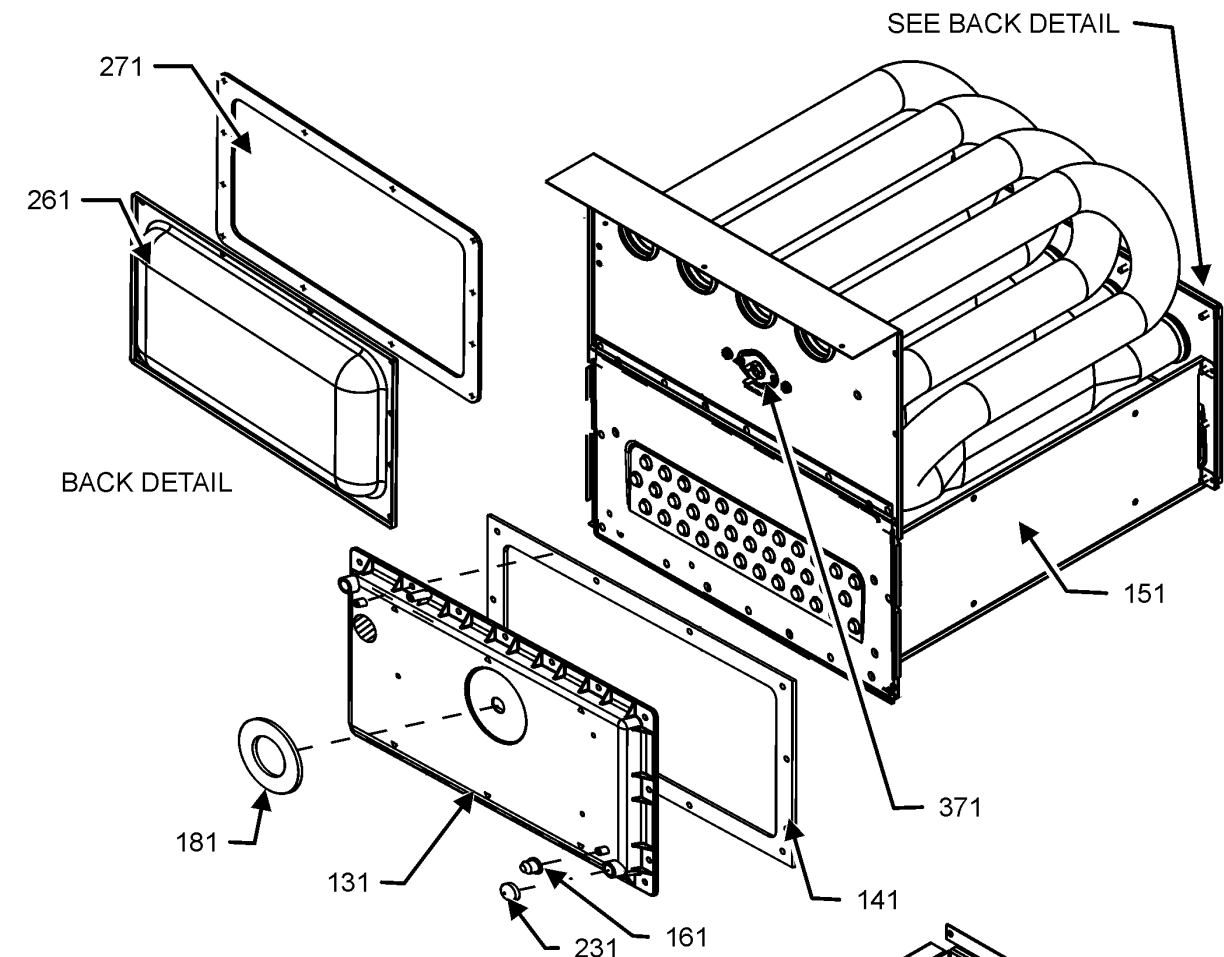
Ref. Part No: No:	Description:	Ref. Part No: No:	Description:
Image 1:			
11	0121F00548DG		PAINTED BASEPAN, 17.5 CF (M1, M2, M3)
11	0121F00549DG		PAINTED BASEPAN, 21 CF (M4)
31	0121F00536		DECK-BLOWER 17.5" CF (M1, M2, M3)
31	0121F00537		DECK-BLOWER 21" CF (M4)
101	0121F00314		ANGLE, DECK (M1, M2, M3)
101	0121F00315		ANGLE, DECK (M4)
111	0121F00426DG		TOP, PAINTED FURNACE 17.5" CF (M1, M2, M3)
111	0121F00434DG		TOP, PAINTED FURNACE 21" CF (M4)
121	0121F00313		ANGLE, SIDE (QTY 2)
201	0164M00115		HOSE- PRESSURE SW 6"
221	10690402		SWITCH-INTERLOCK
231	0161F00064		PIPE, STRAIGHT CF (QTY 2)
241	0164F00026		ELBOW-FLUE, 17.5" CFLOW (M1, M2, M3)
241	0164F00027		ELBOW-FLUE, 21" CFLOW (M4)
251	0154F00041		FRESH AIR GASKET
271	0171M00002		MOTOR-ID, BLOWER
281	0161F00037		COUPLING
291	0130F00429		PRESSURE SWITCH
301	0130F00434		SWITCH, PRESSURE (M4)
301	0130F00435		SWITCH, PRESSURE (M1, M2)
301	0130F00436		SWITCH, PRESSURE (M3)
311	0121F20060		BOX, JUNCTION 90%
331	0121F20061		BOX, JUNCTION 80%
611	0163M00460		CLAMP-HOSE (QTY 2)
791	0154F00015		GASKET (QTY 2)
811	0154F00014		GASKET (M1, M2, M3)
811	0154F00016		GASKET (M4)
991	0121F00389		BRACKET, DOOR SWITCH
NS	0160F00015		INSULATION, HT EXCHANGER 17.5" (M1, M2, M3)
NS	0160F00016		INSULATION, HT EXCHANGER 21" (M4)
NS	M0326804		PLUG-TUBE
NS	0159F20018		WIRE HARNESS (M2, M3, M4)
NS	0159F20021		WIRE HARNESS (M1)

Expanded Model Nomenclature

M1 - GD9T960403BNAA M2 - GD9T960603BNAA M3 - GD9T960803BNAA M4 - GD9T961005CNAA
--

Heat Exchange and Manifold Assembly

HEAT EXCHANGE ASSEMBLY



Heat Exchange and Manifold Assembly

Ref. Part No: No:	Description:	Ref. Part No: No:	Description:
Image 1:			
11	0130F00008		IGNITOR-SINI 17 SEC
21	0151M00027		GAS VALVE
31	10716005		ORIFICE (QTY 2)
41	0130F00010		FLAME SENSOR
51	0130F00123		LIMIT, RESET MAN (M4)
51	10123538		LIMIT-MAN-LIGHT GREEN (M2)
51	10123533		LIMIT-RESET MAN-YELLOW (M1, M3)
61	0163F00007		MANIFOLD (M1)
61	0163F00008		MANIFOLD (M2)
61	0163F00010		MANIFOLD (M4)
61	0163F00014		MANIFOLD (M3)
71	0163F00017		BECKETT BURNER (QTY 2)
81	0121F00456		BRACKET-BURNER 2 (M1)
81	0121F00455		BRACKET-BURNER 3 (M2)
81	0121F00454		BRACKET-BURNER 4 (M3)
81	0121F00453		BRACKET-BURNER 5 (M4)
111	0121F00469		ORIFICE BRACKET-BURNER 2 (M1)
111	0121F00468		ORIFICE BRACKET-BURNER 3 (M2)
111	0121F00467		ORIFICE BRACKET-BURNER 4 (M3)
111	0121F00466		ORIFICE BRACKET-BURNER 5 (M4)
131	0161F00072		COVER FRONT (M4)
131	0161F00053		COVER, FRONT (M1)
131	0161F00078		COVER, FRONT (M2)
131	0161F00079		COVER, FRONT (M3)
141	0154F00026		GASKET FRONT COVER (M1, M2, M3)
141	0154F00030		GASKET FRONT COVER (M4)
151	0257F20123		HEAT EXCHANGER ASSY (M1)
151	0257F20124		HEAT EXCHANGER ASSY (M2)
151	0257F20125		HEAT EXCHANGER ASSY (M3)
151	0257F20126		HEAT EXCHANGER ASSY (M4)
161	M0326804		TUBE PLUG
171	0121F00539		SHEILD, BURNER (M1)
171	0121F00540		SHEILD, BURNER (M2)
171	0121F00541		SHEILD, BURNER (M3)
171	0121F00542		SHEILD, BURNER (M4)
181	0154F00043		GASKET ID BLOWER
231	A1781105		CAP-VINYL .500
261	0121F00317		COVER, REAR (M1, M2, M3)
261	0121F00318		COVER, REAR (M4)
271	0154F00037		GASKET, REAR CVR (M1, M2, M3)
271	0154F00038		GASKET, REAR CVR (M4)
371	20162904		LIMIT, PRIMARY (M3)
371	20162906		LIMIT, PRIMARY (M1, M2, M4)
NS	0121F00583		INSULATION, RETAINER (M1, M2, M3)
NS	0121F00584		INSULATION, RETAINER (M4)
NS	0121F00439		PRIMARY LIMIT-HEAT SHIELD
NS	0121F00355		SHIELD, COIL (QTY 2)

Expanded Model Nomenclature

M1 - GD9T960403BNAA
M2 - GD9T960603BNAA
M3 - GD9T960803BNAA
M4 - GD9T961005CNAA