

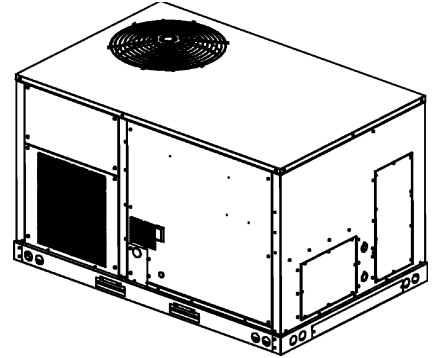


REPAIR PARTS

GPGM5 Residential Package Gas Unit

GPGM56014041AA

GPGM56014041AB



This manual is to be used by qualified technicians only.

This manual replaces RP-G3329

© 2022, 2024 Goodman Manufacturing Company, L.P. ♦ 19001 Kermier Rd. ♦ Waller, TX 77484

Important Information

Index

Functional Parts List	3
Illustration and Parts	4 - 15

Views shown are for parts illustrations only, not servicing procedures.

Text Codes:

AR - As Required

NA - Not Available

NS - Not Shown

00000000 - See Note

QTY - Quantity Example (QTY 3) (If Quantity not shown, Quantity = 1)

M - Model Example (M1) (If M Code not shown, then part is used on all Models)

Expanded Model Nomenclature:

Example M1 - Model#1 M2 - Model#2 M3 - Model#3

Goodman Manufacturing Company, L.P. is not responsible for personal injury or property damage resulting from improper service. Review all service information before beginning repairs.

Warranty service must be performed by an authorized technician, using authorized factory parts. If service is required after the warranty expires, Goodman Manufacturing Company, L.P. also recommends contacting an authorized technician and using authorized factory parts.

Goodman Manufacturing Company, L.P. reserves the right to discontinue, or change at any time, specifications or designs without notice or without incurring obligations.

For assistance within the U.S.A. contact:

Homeowner Support

Goodman Manufacturing Company, L.P.

19001 Kermier Road

Waller, Texas 77484

877-254-4729-Telephone

713-863-2382-Facsimile

For assistance outside the U.S.A. contact:

International Division

Goodman Manufacturing Company, L.P.

19001 Kermier Road

Waller, Texas 77484

713-861-2500-Telephone

713-863-2382-Facsimile

Functional Parts

Part

No: Description:

0163F00017	BECKETT BURNER (QTY 6)
10625733	BLADE-FAN 22" ALUM CCW
ZPS49K5EPFV130	COMP, 49100,208/230/60/1
CONT2P025024V	CONT, 2 POLE, 25 AMP, 24 VAC (QTY 2)
CONT2P040024V	CONT, 2 POLE, 40 AMP, 24 VAC
0130M00178	DPDT RELAY 24VAC (QTY 3)
0251L00011	EXPANSION VALVE ASSY
0130F00010	FLAME SENSOR
0130M00583	FREEZE STAT
0151F00000P	GAS VALVE - WHITE-RODGERS 2-STAGE
0130M00074	HIGH PRESSURE SWITCH
20261709	IGNITOR
20162904	LIMIT PRIMARY
0130F00067	LIMIT, PRIMARY
10123532	LIMIT-RESET MAN-GRAY
0130M00087	LOW PRESSURE SWITCH
0131M00804	MOTOR, ECM
PCBAG123	PCB, IGNITION, DSI, INTEG
0131L00410	PROGRAM, MOTOR
11112501	SWITCH-PRESSURE
0130M00859	TRANSFORMER

SPECIAL PARTS

0161F00007 NAMEPLATE, GOODMAN

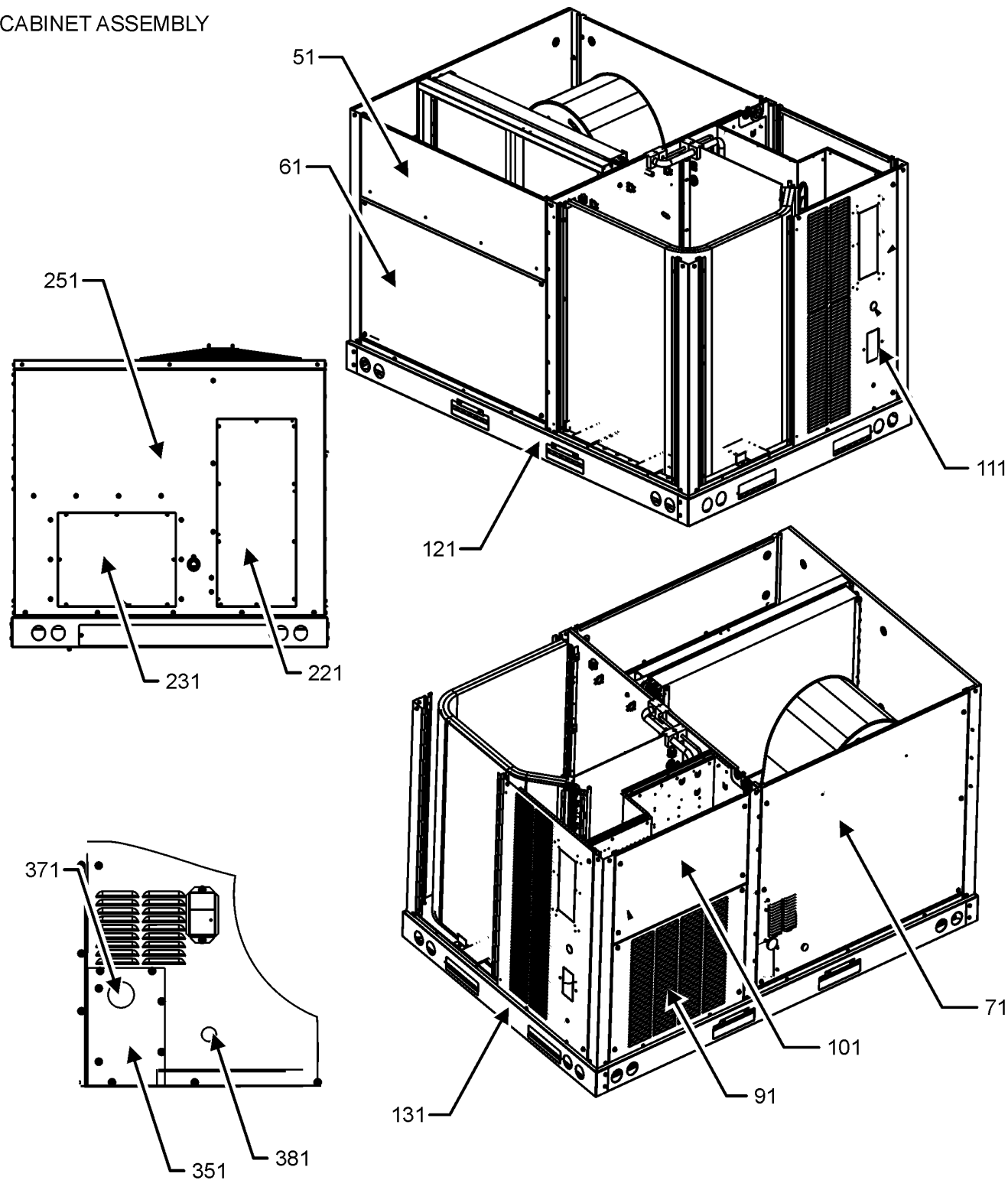
Expanded Model Nomenclature

M1 - GPGM56014041AA

M2 - GPGM56014041AB

CABINET ASSEMBLY

CABINET ASSEMBLY



BURNER DOOR DETAIL

NOTE: CABINET ASSEMBLY MAY DIFFER FROM WHAT IS SHOWN

CABINET ASSEMBLY

Ref. Part No: No:	Description:	Ref. Part No: No:	Description:
----------------------	--------------	----------------------	--------------

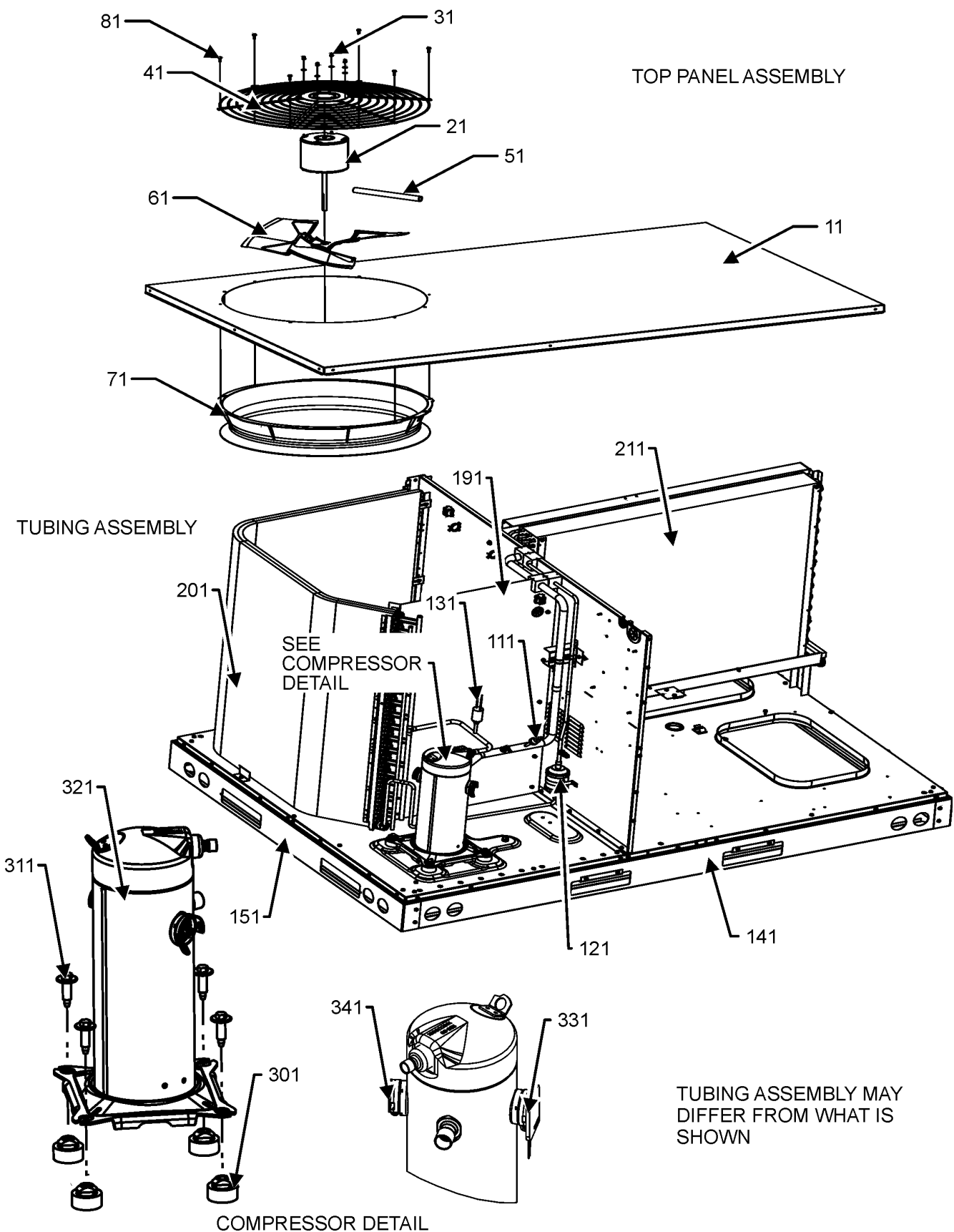
Image 1:

51	0121L01650DG	PAINTED FILTER PANEL
61	0121L01651DG	PAINTED ECONOMIZER PANEL
71	0121L03627DG	PAINTED, PANEL GAS BLOWER
91	0121L02265DG	PAINTED COMPRESSOR PANEL
101	0121L02262DG	PAINTED CONTROL BOX PANEL
111	0121L03643DG	PNT., COMPRESSOR BACK PANEL
121	0121L04850	RAIL, SIDE (QTY 2)
131	0121L01621	END RAIL
221	0121L02910DG	PAINTED COVER-DUCT RETURN
231	0121L02911DG	PAINTED COVER-DUCT SUPPLY
251	0121L03346DG	PAINTED DUCT PANEL
351	0121L03443DG	PAINTED, GAS INLET PANEL
371	B1910010	GROMMET, GAS LINE
381	B1392139	VIEW PORT BUSHING, CLEAR 1.0
NS	0121L03931	HEAT EXCHANGER FLASHING
NS	0161F00007	NAMEPLATE, GOODMAN
NS	0121L01654DG	PAINTED, HAIL GUARD PANEL
NS	0121L01655DG	PAINTED, HAIL GUARD PANEL

Expanded Model Nomenclature

M1 - GPGM56014041AA M2 - GPGM56014041AB
--

TOP PANEL AND TUBING ASSEMBLY



TOP PANEL AND TUBING ASSEMBLY

Ref. Part

No: No:

Description:

Ref. Part

No: No:

Description:

Image 1:

11	0121L01626DG	PAINTED, TOP PANEL
21	0131M00804	MOTOR, ECM
31	0163M00006P	ACORN NUT 5/16 HEX BLACK (QTY 4)
41	0152G00000	FAN GRILLE, RAISED
51	0161R00124	CONDUIT
61	10625733	BLADE-FAN 22" ALUM CCW
71	0161R00048	MOLDED RING-VENTURI 22
81	0163M00004	SCREW #10X3/4", BLACK (QTY 8)
111	0130M00087	LOW PRESSURE SWITCH
121	0162R00056	FILTER/DRIER-BI-FLOW
131	0130M00074	HIGH PRESSURE SWITCH
141	0121L04850	RAIL, SIDE (QTY 2)
151	0121L01621	SMALL END RAIL
191	0121L01634	OD COIL BLOCKOFF
201	0201L00323	ASSY., OD COIL TUBING
211	0211L00152	ASSY., EVAP TUBING
301	B1339533	COMPRESSOR GROMMET (QTY 4)
311	B1393740	COMP. BOLT & SLEEVE (QTY 4)
321	ZPS49K5EPFV130	COMP, 49100,208/230/60/1
331	0159L00027	COMPRESSOR SCROLL HARNESS
341	0159G00010	CABLE, COMPR SCROLL
NS	0141L00003X	BOARD-FORK (QTY 2)
NS	0251L00011	EXPANSION VALVE ASSY
NS	0130M00583	FREEZE STAT
NS	0121L03516	PNL, BRACKET, FORK BOARD (QTY 4)
NS	0163M00005P	WASHER, BLACK (.50 OD .218ID) (QTY 4)

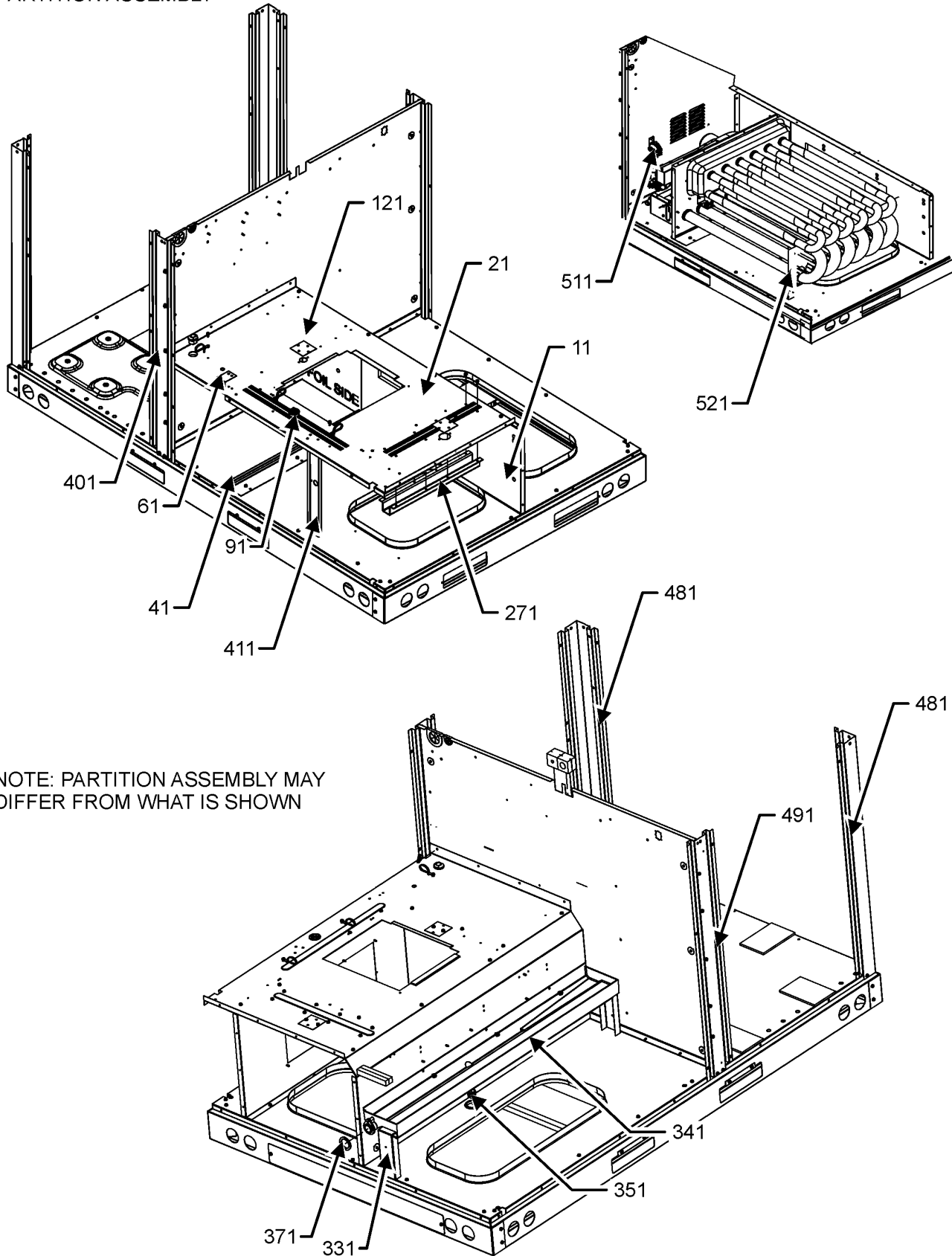
Expanded Model Nomenclature

M1 - GPGM56014041AA

M2 - GPGM56014041AB

PARTITION ASSEMBLY

PARTITION ASSEMBLY



PARTITION ASSEMBLY

Ref. Part No: No:	Description:	Ref. Part No: No:	Description:
Image 1:			
11	0121L02584		BLOWER DECK SIDE
21	0121L04695		PANEL, BLOWER DECK
41	0121L00266		CHANNEL-HEAT PANEL (QTY 2)
61	0121L01709		BLOWER DECK PLATE
91	B1392147		UNIVERSIAL BUSHING WITH SLICE (QTY 2)
121	0121L00321		COVER-SMOKE DETECTOR (QTY 2)
271	0121L02633		BLOWER DECK U-BRACKET
331	0121L01628		DRAINPAN SUPPORT
341	0161L00007		DRAIN PAN, EVAPORATOR 3-5 TON
351	0163L00071		PLUG, DRAIN
371	0154L00180		GASKET, DRAIN PAN
401	0121L04308DG		PAINTED, SIDE POST
411	0121L00300		POST-DECK SUPPORT
481	0121L01625DG		PAINTED CORNER POST (QTY 2)
491	0121L03445DG		PAINTED SIDE POST
511	11112501		SWITCH-PRESSURE
521	0121L03320		BRACKET, TUBE SUPPORT
NS	0121L00293		ANGLE-HEAT EXCHANGER BACK (QTY 2)
NS	0121L02900		BLOWER SIDE PLATE
NS	0121L03125		BRACKET, TUBE (QTY 6)
NS	0121L02935		BRACKET, TUBE SUPPORT
NS	0164M00111		GROMMET-D
NS	0164G00005		GROMMET-HORSESHOW 1.675
NS	0121L01811		HORIZONTAL SUPPORT (QTY 2)
NS	0121L04896		OD COIL BLOCKOFF ANGLE
NS	0121L04021		SIDE SUPPORT (QTY 2)

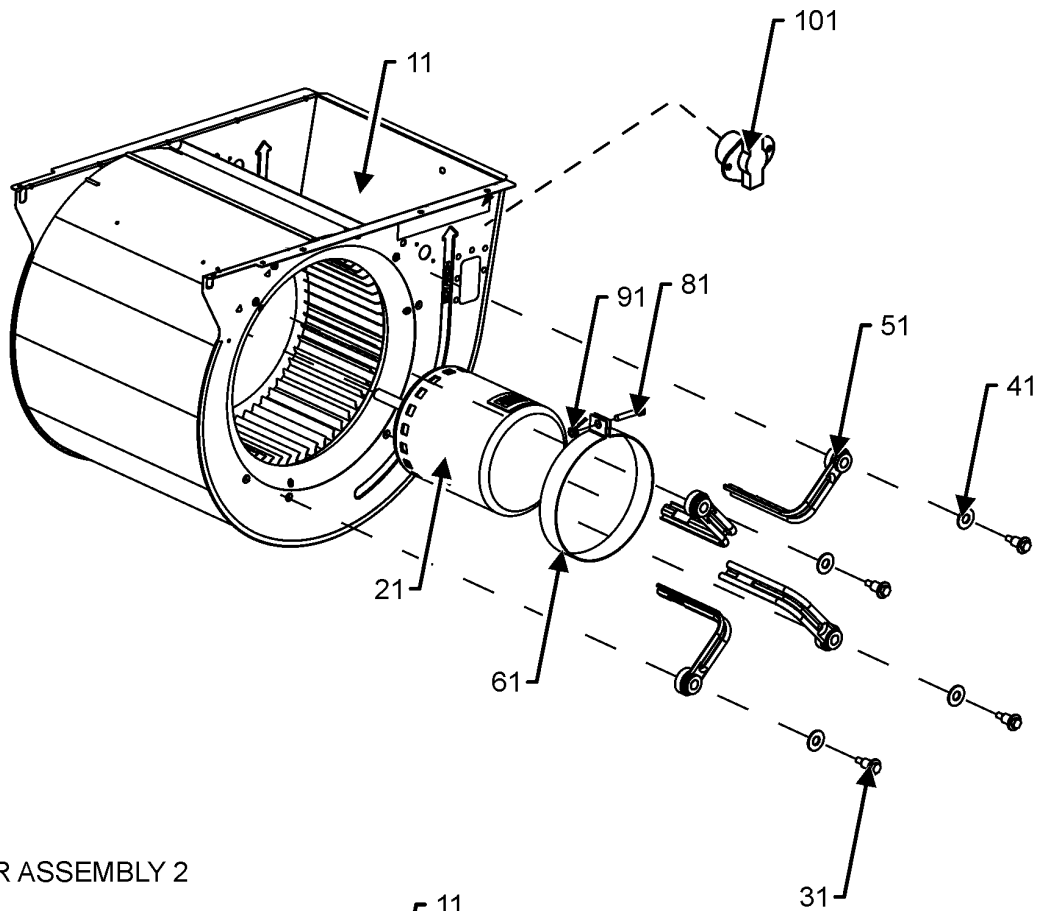
Expanded Model Nomenclature

M1 - GPGM56014041AA

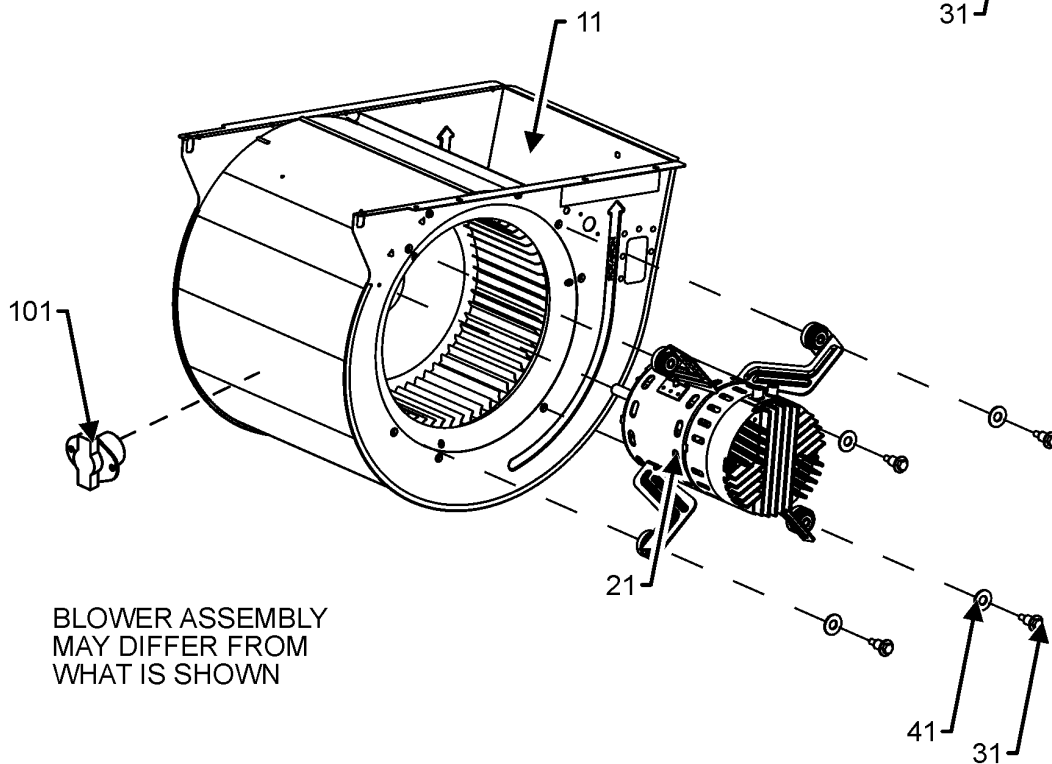
M2 - GPGM56014041AB

BLOWER ASSEMBLY

BLOWER ASSEMBLY 1



BLOWER ASSEMBLY 2



BLOWER ASSEMBLY
MAY DIFFER FROM
WHAT IS SHOWN

BLOWER ASSEMBLY

Ref. Part

No: No:

Description:

Ref. Part

No: No:

Description:

Image 1:

11	0271L00133	ASSY., HOUSING, BLWR
21	0131L00410	PROGRAM, MOTOR
31	M0250565	SCREW-TC 1.25" (QTY 4)
41	B1392918	WASHER, FLAT 1/4 ID X 1 OD (QTY 4)
51	0163A00008	MOTOR MOUNTING ARM (QTY 4)
61	10441601	BAND-MTR MOUNT
81	0163M00320	HEX HEAD ALL THREAD TAP BOLT
91	B1393800	LOCKNUT, NYLON, INSERT 1/4,20
101	20162904	LIMIT PRIMARY

Expanded Model Nomenclature

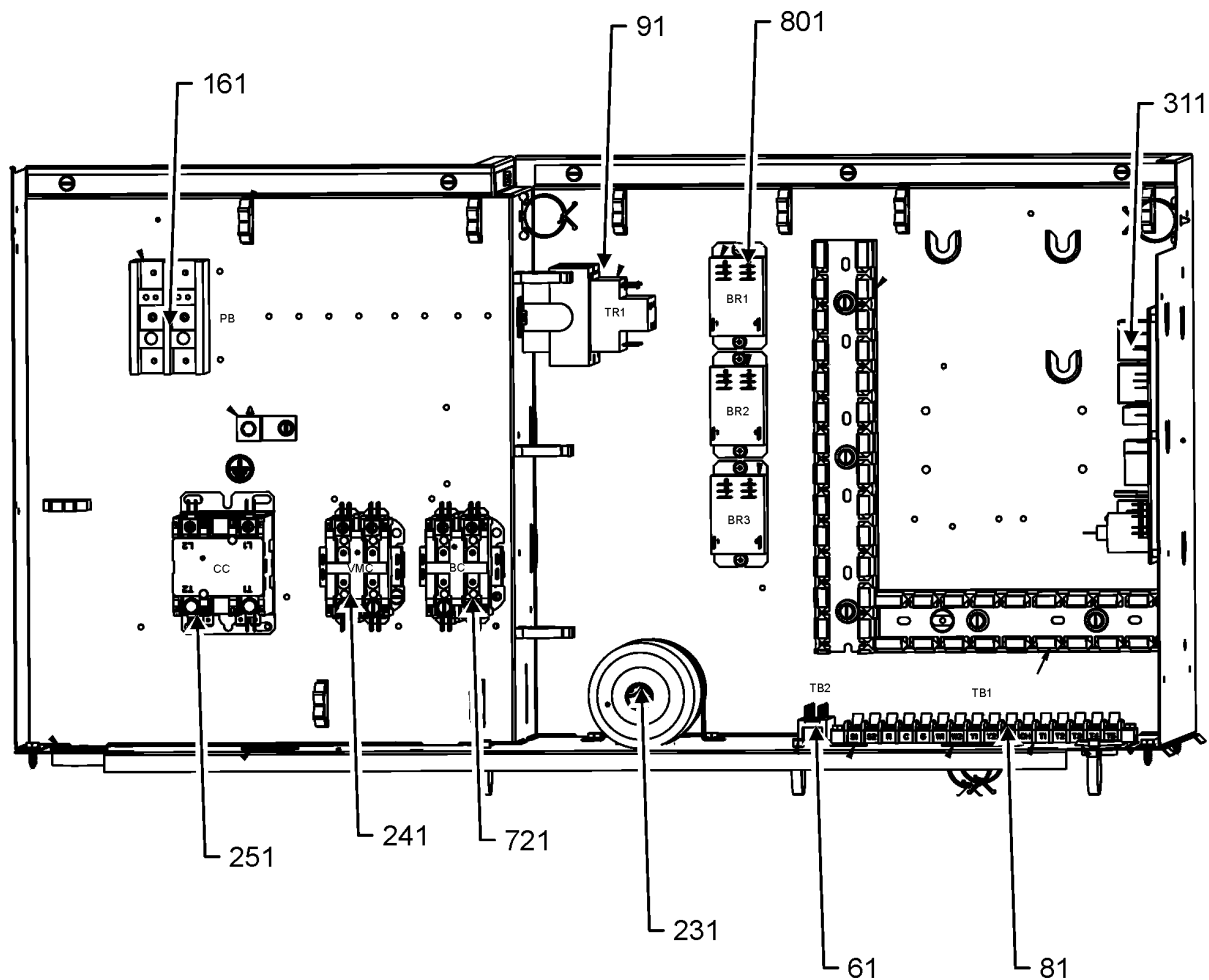
M1 - GPGM56014041AA

M2 - GPGM56014041AB

CONTROL BOX ASSEMBLY

CONTROL BOX ASSEMBLY

1 PHASE



CONTROL BOX ASSEMBLY MAY DIFFER FROM WHAT IS SHOWN

CONTROL BOX ASSEMBLY

Ref. Part No: No:	Description:	Ref. Part No: No:	Description:
----------------------	--------------	----------------------	--------------

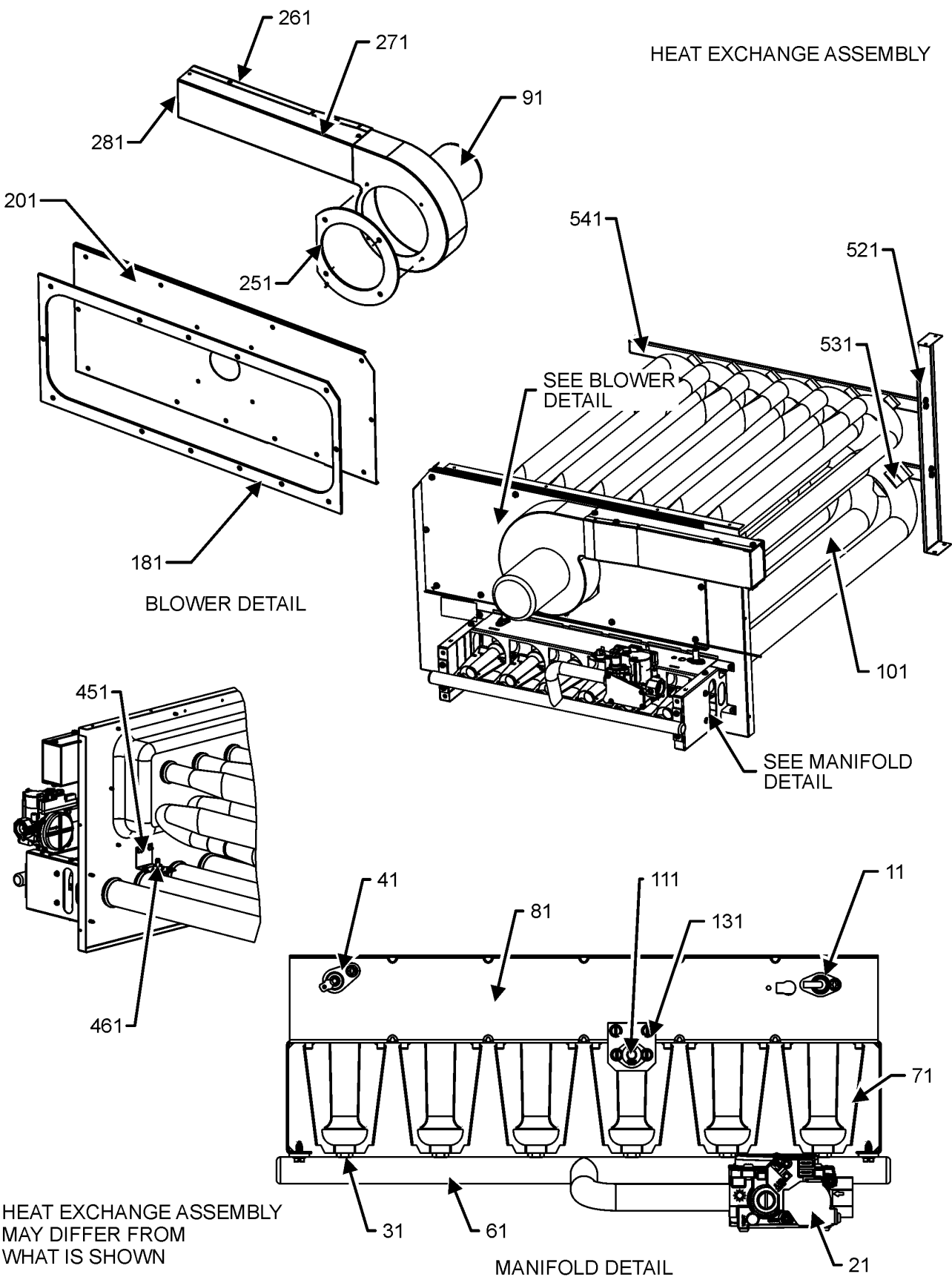
Image 1:

61	802007090	TERM BOARD
81	0130M00038	TERMINAL BOARD
91	0130M00859	TRANSFORMER
161	16220-2	BLOCK, POWER
231	CAP400000440CS	CAP,40MFD/440V/SINGLERD
241	CONT2P025024V	CONT, 2 POLE, 25 AMP, 24 VAC
251	CONT2P040024V	CONT, 2 POLE, 40 AMP, 24 VAC
311	PCBAG123	PCB, IGNITION, DSI, INTEG
721	CONT2P025024V	CONT, 2 POLE, 25 AMP, 24 VAC
801	0130M00178	DPDT RELAY 24VAC (QTY 3)
NS	0164M00079	BOOT-CAPACITOR, ROUND
NS	0130M00507	MOTOR POWER HARNESS
NS	20520901	STRAP-CAPACITOR (QTY 6)
NS	0130M00506	X-13 LOW VOLTAGE WIRE HARNESS

Expanded Model Nomenclature

M1 - GPGM56014041AA
M2 - GPGM56014041AB

HEAT EXCHANGE ASSEMBLY



HEAT EXCHANGE ASSEMBLY

Ref. Part No: No:	Description:	Ref. Part No: No:	Description:
Image 1:			
11	20261709		IGNITOR
21	0151F00000P		GAS VALVE - WHITE-RODGERS 2-STAGE
31	0163F00018		ORIFICE (QTY 6)
41	0130F00010		FLAME SENSOR
61	0163L00025		MANIFOLD-GAS, 6 BURNER
71	0163F00017		BECKETT BURNER (QTY 6)
81	0121L01363		BRACKET, BURNER 6
91	0131L00002		VENT MOTOR
101	0270L01360		ASSY, PANEL, PARTITION/TUBE, 6
111	10123532		LIMIT-RESET MAN-GRAY
131	0121L00053		BRACKET-FLAME ROLLOUT
181	0154L00007		GASKET, BLOWER/ORIFICE PLATE
201	0121L03552		PLATE, ID BLOWER
251	0154L00007		GASKET, BLOWER/ORIFICE PLATE
261	0121L01355		FLUE CHANNEL
271	0121L01356		FLUE SIDE COVER
281	0163L00072		SCREEN-FLUE
451	0121L03948		BRACKET, PRIMARY LIMIT
461	0130F00067		LIMIT, PRIMARY
521	0121L03320		BRACKET, TUBE SUPPORT
531	0121L03125		BRACKET, TUBE (QTY 6)
541	0121L02935		BRACKET, SUPPORT, TUBE

Expanded Model Nomenclature

M1 - GPGM56014041AA

M2 - GPGM56014041AB