



COMFORT FOR LIFE

3.16

2 0 1 6

DUCTLESS PRODUCTS

CATALOG



Daikin is one of the largest manufacturer of heating, cooling and refrigerant products in the world.

Daikin is recognized as one of the world's leader in the manufacturers of HVAC equipment and refrigerants.

For over 90 years, Daikin has grown consistently and successfully due to the loyalty and success of our customers, as well as a track record of innovation and quality. Daikin is redefining home comfort in North America with some of the most technologically and aesthetically advanced solutions. These intelligent, energy efficient systems provide an unprecedented level of individual comfort and control.

Daikin is unique in its manufacturing footprint. It is global, but with a local focus. We have operations around the world, with research and development, as well as production facilities in 60 countries.

Using our advanced technology and expertise, Daikin has earned a reputation for excellence as an indoor comfort specialist in countries and regions spanning the globe by providing solutions for the needs of our customers. In the United States, we operate major manufacturing and research and development facilities in Texas, Tennessee, Minnesota, Alabama and Ohio.



Setting new standards in comfort and efficiency from Daikin

Minimize Running Costs

Maximize Flexibility

Fast Installation

As one of the largest manufacturer of heating, cooling, and refrigerant products in the world, Daikin offers a full range of residential and commercial products to meet all application needs.



Contents

Daikin Ductless

| | |
|----------------------|---|
| Why Ductless? | 5 |
| Why Daikin? | 5 |
| Daikin Benefits | 6 |

Control from Anywhere

| | |
|------------------------------------|---|
| Daikin ENVi Intelligent Thermostat | 7 |
| Navigation Controller | 7 |
| Hand-held Controller | 7 |

Room by Room

| | |
|------------------------------|---|
| Ductless Applications | 8 |
| System Features and Benefits | 9 |

Single Zone Systems

| | |
|--------------------------------|----|
| 15 Series Wall-Mounted | 12 |
| 19 Series Wall-Mounted | 13 |
| 20 Series Wall-Mounted Units | 14 |
| 20 Series Floor-Standing Units | 15 |
| LV Series Wall-Mounted | 16 |
| LV Slim-Duct Concealed | 17 |
| Quaternity Heat Pump | 18 |

Multi-Zone Systems

| | |
|--------------------------|----|
| MXL Multi-Zone Solutions | 19 |
| MXS Multi-Zone Solutions | 20 |
| Multi-Zone Combinations | 21 |
| Multi-Zone Solutions | 22 |

Light Commercial Systems

| | |
|--|----|
| SkyAir Heat Pumps and Air Conditioners | 23 |
|--|----|

Ductless Product Specifications

| | |
|--------------------------------|----|
| 15 Series Wall-Mounted | 26 |
| 19 Series Wall-Mounted | 27 |
| 20 Series Wall-Mounted | 28 |
| 20 Series Floor-Standing | 29 |
| LV Series Wall-Mounted | 30 |
| LV Slim-Duct Concealed | 31 |
| Quaternity Heat Pump | 32 |
| MXL Multi-Zone Outdoor Units | 33 |
| MXL Multi-Zone Indoor Units | 34 |
| MXS Multi-Zone Outdoor Units | 36 |
| MXS Multi-Zone Indoor Units | 37 |
| SkyAir Outdoor Units | 39 |
| SkyAir Indoor Units | 40 |
| Accessories | 43 |
| Multi-Zone Compatibility Table | 46 |

Why Daikin?

Why Ductless?

DAIKIN HAS A FOCUS AND TRACK RECORD OF QUALITY

With over ninety years of HVAC history since its founding, Daikin has created a global indoor comfort revolution with innovative new technologies and products that have brought firsts to the world. From the introduction of new compressor designs or new ways to precisely control refrigerant flow, Daikin strives to be a global leader by investing in technology. We bring this same focus on innovation to North America, applying our portfolio of product features from around the world to meet the challenges we face in North American homes and businesses.

Optimal design and comfort for the whole home

Integrated design

Daikin indoor ductless units offer homeowners a discreet, modern design. The unit's smooth curve blends beautifully with the wall resulting in an unobtrusive presence that matches virtually all interior decors.

Efficient and smart

Inside the ductless design is a highly intelligent system, with innovative features designed to reduce power consumption. Some units offer whisper-quiet performance down to 19dB(A) to further to your sense of comfort.

Intelligent eye

The intelligent eye occupancy sensor, available on select models, controls comfort and conserves energy. If the room is empty for 20 minutes it changes the set point to start saving energy. As soon as someone enters the room, it immediately returns to the original setting. Regular use of this feature can provide additional energy savings of up to 20% or more.

Daikin ductless systems offer dealers:

- High-quality, energy-efficient comfort solutions
- Opportunities to spend less time on installations and more time with new customers
- Differentiated product offerings that deliver improved customer satisfaction
- Superior warranties* and reduced call backs



As an innovation leader, Daikin is laying the foundation for next generation technology with multiple cutting-edge core technologies. In May 2014, *Forbes Magazine* recognized Daikin as an innovation leader, putting Daikin on its list of the 100 Most Innovative companies in the world.



Source: *Forbes Magazine*, May 2014

* Complete warranty details available from your local dealer or at www.daikincomfort.com

Daikin Benefits

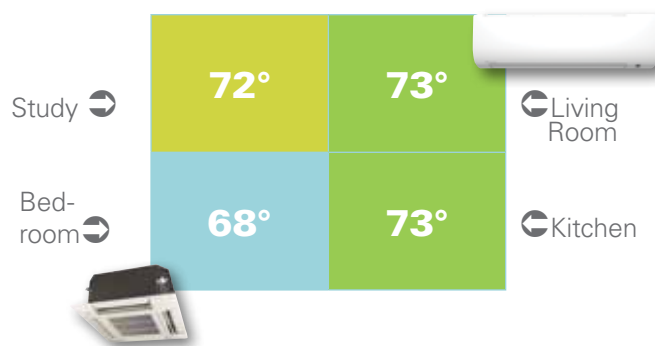
COMFORTABLE LIMITED WARRANTY* PROTECTION

| 15 Series | 19 Series 20 Series | LV Series | Quaternity | MXL Series MXS Series | SkyAir (Light Commercial) |
|---|---|---|---|---|---|
|  |  |  |  |  |  |
| <p>* Complete warranty details available from your local dealer or at www.daikincomfort.com. To receive the 10-Year or 12-Year Parts Limited Warranty, online registration must be completed within 60 days of installation. Online registration is not required in California or Quebec.</p> <p>** No registration required. Complete warranty details available from your local dealer or at daikincomfort.com.</p> | | | | | |

A full range of styles and options for every home, and every room

Daikin ductless systems are an ideal solution to displace inefficient traditional systems in primary living spaces or for refurbishing and remodeling additional spaces. They have a modern design and are extremely quiet in operation.

Our ductless heat pumps are all-in-one heating and cooling solutions, meaning comfortably warm in winter and cool in summer.



Smart Inverter technology

Daikin's inverter technology is a true innovation in the field of climate control. The principle is simple: inverters adjust the power used to suit the actual requirement – no more, no less! Ductless systems deliver the capacity required to maintain desired room conditions, typically reducing energy consumption by up to 30% or more compared to traditional fixed-speed ducted systems. This technology minimizes temperature fluctuations and provides continuous cooling and heating comfort.

Whisper quiet

Daikin systems feature ultra-low indoor and outdoor operating sound levels. Daikin systems most often operate at low speeds with indoor sound levels as low as 19 decibels (dB) and outdoor sound levels as low as 49 dB. Activate the indoor unit quiet operation and sound levels drop by 2-3 dB for gentler heating and cooling and quiet operation.

Advanced Filtration

Long life, washable filters remove a wide range of airborne particles and decompose odors such as those from painting, cooking, smoking and other sources.

Heating Performance

Daikin systems provide heating performance with single and multi-zone Heating Seasonal Performance Factor's (HSPF's) as high as 12.5, making Daikin systems efficient and effective even in extreme environments. For added assurance on the coldest days, connect a Daikin ENVi thermostat and automatically control secondary heat sources.

Innovative Controls Solutions

Control your system from anywhere...

Daikin ENVi (DACA-TS1-1)

The Daikin ENVi Intelligent Thermostat is an intelligent, user-friendly residential control offering that gives the homeowner full access to comfort control at or away from home. With supported Wi-Fi connectivity, homeowners can monitor and control their Daikin systems via PC through the User Web Portal or Daikin ENVi apps available via smart phone and/or Internet-enabled tablet on Apple, Android and Blackberry devices.



Easy-to-use

User-friendly interface makes it easy to set up a personalized program, adjust settings, and make adjustments anytime, anywhere.



Nature

Save money on utility bills and reduce energy consumption (as compared to non-scheduled systems) with the weekly schedule.



Intelligent

Receive automatic alerts and reminders for service due dates, filter changes, and more.

Display

- Room temperature/relative humidity display
- Outdoor temperature and weather forecast

Function

- Cool, heat, and auto modes with dual set points
- Weekly scheduling
- Setback control
- Hold, quick save, and vacation settings
- Fan on/auto, fan speed, and louver direction
- Error code with plain text explanation
- Wi-Fi enabled
- Auxiliary heat control and programming

Always in Control – no matter where you are.



Navigation Remote Controller (Wired) BRC1E73

The Navigation Remote Controller offers scalable control architecture optimized for Daikin FFQ ductless and SkyAir systems. The wall-mounted controller features a back-lit LCD display as well as intuitive menus. The menu displays are available in English, French, or Spanish languages.

Hand-held Controller Wireless

Hand-held controllers, included with most indoor units, provide flexible control of Daikin ductless systems including: temperature control, operating modes, weekly programming, and more.



Ductless Applications

What are the best applications for Daikin ductless units in homes?

Wherever homeowners spend the most time!

Ductless solutions offer homeowners energy saving, flexible solutions for individual rooms, whole floors, and whole homes. To achieve the greatest comfort and savings from ductless systems, install them in the rooms used most and set back or turn off traditional systems. Daikin ductless solutions are ideal for living rooms, master bedrooms, offices, basements, and more.

Daikin Ductless for one room, or every room in your home.



Key Features and Benefits

Superior Comfort Control

Indoor Unit Quiet Operation. Sound levels are reduced by 2-3 decibels (dB) from the low fan speed for quieter and gentler heating and cooling.

Outdoor Unit Quiet Operation. Outdoor unit sound levels can be reduced by 3dB for times when quieter operation is needed.

Intelligent Eye. The intelligent eye is an infrared sensor with the ability to sense movement in the room. When you are in the room, the air conditioner operates normally. If you leave the room for more than 20 minutes the air conditioner automatically changes to an energy-saving operation. Using the intelligent eye, savings of up to 20% in cooling and up to 30% in heating can be achieved.

Automatic Operation. For unattended year-round comfort, this function allows the unit to automatically switch between heating and cooling modes as required.

Program Dry Function. This gives priority to reducing the level of humidity in the room rather than room temperature.

Auto Fan Speed. To reduce operating sound and power consumption, the fan speed is automatically controlled by the micro-processor to suit the controller setting and prevailing room temperature.

Hot Start. When the heating operation starts or when the unit changes from cooling to heating there is no cold draft released into the room.

Lifestyle Convenience

Econo Mode. Limits the maximum operating current and power consumption of the outdoor unit by approximately 30% during start-up. This saves energy and reduces the load on the electrical circuit when multiple electrical devices are used simultaneously.

Powerful Operation. Pushing the POWERFUL button on the remote control gives you a boost in cooling or heating power for a 20-minute period, even if the unit is already operating at high capacity.

Remote Controller with Back-lit Display. Features a back-lit LCD and luminescent control buttons, allowing for easy viewing in dimly lit rooms.

Home Leave Operation. Select this energy saving function when leaving the house and the air conditioner will operate at a pre-selected temperature. Your home can then be warmed or cooled much quicker upon your return. It can also be used to record your preferred (default) settings.

Indoor Unit On/Off Switch. A convenient on/off switch on the indoor unit allows you to start up the system even if you have misplaced the remote control or the remote control batteries are exhausted.

Comfortable Airflow

Wide Angle Louvers. Smoothly curved wide-angle louvers provide wide airflow coverage for effective heating and cooling no matter where the indoor unit is placed within the room.

Dual Flap System. This unique system directs warm air to the floor in winter and cool air across the room in summer for maximum efficiency and comfort. The large flap governs airflow direction while the small flap (or diffuser) swings, producing fine air currents that help circulate the air around the room.

Comfortable Mode. The new flap changes the delivery angle to horizontal for cooling and vertical for heating operation, to prevent cold or warm air from blowing directly onto your body.

Vertical Auto-Swing (up and down). The vertical auto swing automatically sweeps the air across the room in an up and down motion. When the unit is switched off, the louvers close automatically.

Horizontal Auto-Swing (left and right). Automatically moves to ensure an even distribution of air throughout a room.

3-D Airflow. Combines vertical and horizontal auto-swing to circulate cool/warm air to the corners of large spaces.

Worry Free

Auto-Restart. The unit memorizes the operation mode, airflow and temperature settings. Should there be a power failure when the unit is in operation, it will automatically return to the same operating conditions when the power is restored.

Self-Diagnosis. In the event that a problem develops with the unit, malfunction codes can be displayed on the liquid crystal panel of the remote control for fast and easy fault diagnosis.

Anti-Corrosion. The special anti-corrosion coating on the outdoor unit heat exchanger provides greater resistance to salt damage and atmospheric corrosion.

Comfortable and Clean

Air-Purifying Filter with Photocatalytic Deodorizing Function. This combination operates as a highly-effective unit and can be used for up to three years if periodic maintenance is performed.

Titanium Apatite Photocatalytic Air-Purifying Filter. This filter combines the air-purifying filter and titanium apatite photocatalytic deodorizing filter in a single highly effective unit. The filter removes a wide range of airborne particles and decomposes odors such as those from cooking, painting, smoking, or other sources. It lasts for three years without replacement if washed once every six months.

Mold-Resistant Air Filter. The pre-filter net is impregnated with a safe, colorless and odorless mold preventative that is intended to help reduce mold on the filter itself.

Wipe-Clean Flat Panel. The flat panel models can be cleaned with only the single pass of a cloth across their smooth surface. The flat panel can also be easily removed for more thorough cleaning.

Timers

24-Hour On/Off Timer. The timer can be preset to start and stop the air conditioner at any time within a 24-hour period. Once the times are set, the air conditioner can be operated for a period by simply pressing the ON or OFF timer buttons.

Weekly Timer. The weekly timer function makes it easy to enter up to four settings per day for each day of the week. The weekly timer function not only allows you to program on and off time, but also the desired temperature.

Night Set Mode. Through the use of the 'Timer-OFF Circuit', the preset room temperature gently rises in cooling or falls in heating before the unit stops. This energy-saving feature allows you to sleep comfortably without feeling a sudden change in the room temperature, while at the same time saving energy.

Keeping Warm

Quick Warming Function. Preheats the compressor to shorten the time required to discharge warm air.

Automatic Defrosting. Sensor performs automatic defrosting of the outdoor heat exchanger if necessary, ensuring optimum heating performance.

Ductless Products

Split System Features

| | | Single Split | | | | | | Multi-Split | | | | | | |
|---------------------|---|--------------|--------|-----------|---------|--------|------|-------------|---------|--------|---------|---------|--------|------|
| Type | | HP/AC | HP/AC | Heat Pump | | | | Heat Pump | | | | | | |
| Models | | FTXN_NM | FTX_NM | FDXS_LV | FTXS_LV | FTXG_H | FVXS | FDXS_LV | CDXS_LV | CTXS_H | CTXS_LV | FTXS_LV | FFQ_LV | FVXS |
| Comfortable Airflow | Pulse Amplitude Modulation | ■ | ■ | ■ | ■ | ■ | | | | | | | | |
| | Power Airflow Dual Flaps | | | | ■ | ■ | | | | ■ | ■ | ■ | | |
| | Wide-Angle Louvers | ■ | ■ | | ■ | ■ | ■ | | | ■ | ■ | ■ | | ■ |
| | Vertical Auto Swing (up and down) | ■ | ■ | | ■ | ■ | ■ | | | ■ | ■ | ■ | ■ | ■ |
| | Horizontal Auto Swing (left and right) | | | | ■ | ■ | | | | ■ | ■ | ■ | | |
| | 3-D Airflow | | | | ■ | ■ | | | | ■ | ■ | ■ | | |
| | Comfortable Mode | ■ | ■ | | ■ | ■ | | | | | ■ | ■ | | |
| Comfort Control | Fan Only | ■ | ■ | ■ | ■ | ■ | ■ | ■ | ■ | ■ | ■ | ■ | ■ | ■ |
| | Indoor Unit Quiet Operation | ■ | ■ | ■ | ■ | ■ | ■ | ■ | ■ | ■ | ■ | ■ | | ■ |
| | Outdoor Unit Quiet Operation | | | ■ | ■ | | ■ | ■ | ■ | ■ | ■ | ■ | ■ | ■ |
| | Intelligent Eye | | | | ■ | | | | | ■ | ■ | ■ | | |
| | Automatic Operation | ■ | ■ | ■ | ■ | ■ | ■ | ■ | ■ | ■ | ■ | ■ | ■ | ■ |
| | Program Dry Function | ■ | ■ | ■ | ■ | ■ | ■ | ■ | ■ | ■ | ■ | ■ | ■ | ■ |
| | Auto Fan Speed | ■ | ■ | ■ | ■ | ■ | ■ | ■ | ■ | ■ | ■ | ■ | | ■ |
| Healthy and Clean | Hot Start | ■ | ■ | ■ | ■ | ■ | ■ | ■ | ■ | ■ | ■ | ■ | ■ | ■ |
| | Mold Resistant Air Filter | ■ | ■ | ■ | ■ | ■ | ■ | ■ | ■ | ■ | ■ | ■ | ■ | ■ |
| | Air-Purifying Filter with Photocatalytic Deodorizing Function | | | | | | | | | ■ | | | | |
| | Titanium Apatite Photocatalytic Air-Purifying Function | | ■ | | ■ | ■ | ■ | | | | ■ | ■ | | ■ |
| | Flash Streamer | | | | | ■ | | | | | | | | |
| Lifestyle | Wipe-Clean Flat Panel | ■ | ■ | | ■ | ■ | ■ | | | ■ | ■ | ■ | | ■ |
| | Standby Electricity Saving | ■ | ■ | ■ | ■ | | ■ | ■ | ■ | | | ■ | | |
| | Econo Mode | ■ | ■ | ■ | ■ | | ■ | ■ | ■ | | ■ | ■ | | ■ |
| | Powerful Operation | ■ | ■ | ■ | ■ | ■ | ■ | ■ | ■ | ■ | ■ | ■ | | ■ |
| | Remote Controller with Back-lit Display | | ■ | ■ | ■ | | ■ | ■ | ■ | ■ | ■ | ■ | | ■ |
| | LCD Wireless Remote Control | ■ | ■ | ■ | ■ | ■ | ■ | ■ | ■ | ■ | ■ | ■ | | ■ |
| | Home Leave Operation | | | | | | | | | ■ | | | | |
| Timers | Indoor Unit On/Off Timer | ■ | ■ | ■ | ■ | ■ | ■ | ■ | ■ | ■ | ■ | ■ | ■ | ■ |
| | 24-Hour On/Off Timer | ■ | ■ | ■ | ■ | ■ | ■ | ■ | ■ | ■ | ■ | ■ | | ■ |
| | Weekly Timer | | | | ■ | | ■ | | | | ■ | ■ | | ■ |
| Worry Free | Night Set Mode | ■ | ■ | ■ | ■ | ■ | ■ | ■ | ■ | ■ | ■ | ■ | | ■ |
| | Auto Restart after Power Failure | ■ | ■ | ■ | ■ | ■ | ■ | ■ | ■ | ■ | ■ | ■ | ■ | ■ |
| | Self-Diagnosis with Digital Display | ■ | ■ | ■ | ■ | ■ | ■ | ■ | ■ | ■ | ■ | ■ | ■ | ■ |
| | Anti-corrosion Treatment of Outdoor Heat Exchanger Fin | ■ | ■ | ■ | ■ | ■ | ■ | ■ | ■ | ■ | ■ | ■ | ■ | ■ |

Ductless Products



15 Series

Wall-Mounted Air Conditioner & Heat Pump

15 SEER | 8.2 HSPF

COMFORTABLE LIMITED WARRANTY* PROTECTION



* Complete warranty details available from your local dealer or at www.daikincomfort.com. To receive the 12-Year Parts Limited Warranty, online registration must be completed within 60 days of installation. Online registration is not required in California or Quebec.

Daikin 15 and 19 Series wall-mounted units use the latest technology combined with advanced engineering and design to make them ideal for any room in the house. Blending easily with the interior décor and providing quiet operation, these units provide optimal climate control throughout the year.

DUCTLESS SINGLE SPLIT WALL-MOUNTED HEAT PUMP AND COOLING ONLY SYSTEMS

Variable Speed

Designed for *Comfort for Life*, both Daikin 15 and 19 Series units include advanced features to ensure a comfortable experience every moment. From the wide angle louver design to the auto-swing and comfortable mode controller settings, effective heating and cooling is ensured throughout the space. These Daikin brand heat pumps and air conditioners are designed to blend in discreetly with any home design and are ideal for single rooms, enhancements and additions up to 1,500 square feet. **

** Equipment selection should always be based on detailed load calculation performed by a qualified technician.

15 SEER | 8.2 HSPF

Quick and easy installation for a broad range of applications

Comfort features of 15 Series



Energy Efficient – 15 SEER, 8.2 HSPF and up to 12.2 EER for ultra-efficient cooling and heating operation and reduced operating costs compared to conventional lower-efficiency systems.



Heat Pump and Air Conditioning models available with capacity ranges from .75 to 2 tons, sizes: 09, 12, 18, 24k BTU/h.



Undisturbed Comfort – Indoor and outdoor units offer exceptionally low sound levels as low as 49 dB(A) outdoors and as low as 19dB(A) indoors.



Advanced Filtration – Long life, washable filters remove a wide range of airborne particles and decompose odors, such as those from cooking, painting, smoking and other sources.



Wireless Remote Control – Hand-held remote for automatic airflow adjustment eliminates the need for manual duct adjustments.

Ideal solution for:

- Renovations, remodeling and new construction
- Sun rooms, basements, attics, garages, hot or cold rooms, and more

| 15 and 19 Series Standard Features | 15 | 19 | 15 and 19 Series Standard Features | 15 | 19 |
|---|----|----|---|----|----|
| Inverter Compressor | ✓ | ✓ | 208/230/1 Power Supply | ✓ | ✓ |
| Cooling Range 50° - 115° F | ✓ | | Wireless Remote Controller | ✓ | |
| Heating Range 5° - 75° F | ✓ | | Backlit LCD Wireless Remote Controller | | ✓ |
| Cooling Range 0° - 115° F (w/ Wind Baffle) | | ✓ | Outdoor Unit Quiet Operation | ✓ | ✓ |
| Heating Range -4° - 75° F (w/ Drain Pan Heater) | | ✓ | Auto Changeover (Heat Pump Only) | ✓ | ✓ |
| Indoor Sound Pressure as Low as 19 dB(A) | ✓ | | Auto Fan Speed Control | ✓ | ✓ |
| Outdoor Sound Pressure as Low as 46 dB(A) | ✓ | | Self Diagnostics with Digital Display | ✓ | ✓ |
| Washable Air Filter | ✓ | ✓ | Auto Restart after Power Failure | ✓ | ✓ |
| Air Purifying Filter Set | | ✓ | Anti-Corrosion Heat Exchanger Treatment | ✓ | ✓ |
| Program Dry Function | ✓ | ✓ | Max Piping (09/12 MBH): 66' L, 49' H | ✓ | ✓ |
| Econo Mode | ✓ | ✓ | Max Piping (18/24 MBH): 98' L, 66' H | ✓ | ✓ |
| Powerful Operation Mode | ✓ | ✓ | Precharged for up to 33 ft of Liquid Line | ✓ | ✓ |

COMFORTABLE LIMITED WARRANTY* PROTECTION

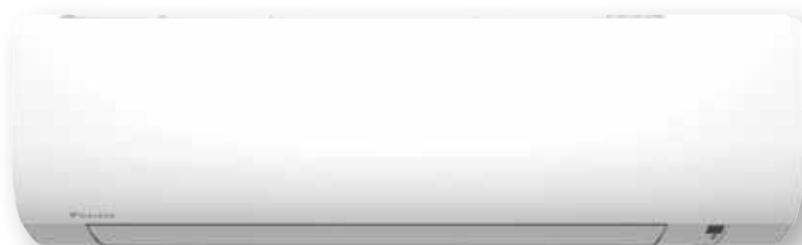


* Complete warranty details available from your local dealer or at www.daikincomfort.com. To receive the 12-Year Parts Limited Warranty, online registration must be completed within 60 days of installation. Online registration is not required in California or Quebec.

19 Series

Wall-Mounted Air Conditioner & Heat Pump

Up to 19 SEER | 9.0 HSPF



ENERGY STAR® and the **ENERGY STAR** mark are registered trademarks owned by the U.S. Environmental Protection Agency. **ENERGY STAR** products are third-party certified by an EPA-recognized Certification Body. Products that earn the **ENERGY STAR** prevent greenhouse gas emissions by meeting strict energy efficiency guidelines set by the U.S. Environmental Protection Agency.

Proper sizing and installation of equipment is critical to achieve optimal performance. Split system air conditioners and heat pumps must be matched with appropriate coil components to meet **ENERGY STAR** criteria. Ask your contractor for details or visit www.energystar.gov.

Up to 19 SEER | 9.0 HSPF

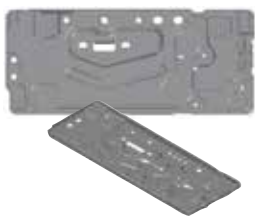
15 Series / 19 Series Optional Accessories

Indoor Unit

| | |
|------------|--|
| ARC480A6 | 15 Series HP Wireless Remote Controller (Included) |
| ARC480A7 | 15 Series AC Wireless Remote Controller (Included) |
| ARC480A8 | 19 Series HP Wireless Remote Controller (Included) |
| ARC480A9 | 19 Series AC Wireless Remote Controller (Included) |
| BRC944B2 | Wired Remote Controller |
| BRCW901P10 | Remote Controller Cable, Plenum Rated, 10 ft. |
| BRCW901P25 | Remote Controller Cable, Plenum Rated, 25 ft. |
| KRP980B1 | Adaptor for Connection of Wired Controllers (09/12 MBH Only) |
| KRP067A41 | Adaptor for Connection of Wired Controllers (18/24 MBH Only) |
| DACA-TS1-1 | Daikin ENVi Intelligent Thermostat Kit |
| DACA-CP3-1 | Condensate Pump with Integral Float Switch |

Outdoor Unit

| | |
|------------|-------------------------------------|
| DACA-WB-3 | Powder-Coated, Wall-Mounted Bracket |
| KEH067A41E | Drain Pan Heater for 09 & 12 units |
| KEH063A4E | Drain Pan Heater for 18 & 24 units |



Enhanced Drain Pan: 15 and 19 Series models feature an enhanced drain pan with optimal drainage for reduced ice build-up in extreme conditions.

Comfort features of 19 Series



Energy Efficient – Up to 19 SEER, 9.0 HSPF, up to 12.5 EER for ultra-efficient cooling and heating operation and reduced operating costs compared to conventional lower-efficiency systems. Heat Pump and Cooling Only models available.

Capacity ranges from .75-to 2-tons
Sizes: 09, 12, 18, 24k BTU/h



Undisturbed Comfort – Indoor and outdoor units offer exceptionally low sound levels as low as 49 dB(A) outdoors and as low as 19dB(A) indoors.



Advanced Filtration – Long life, washable filters remove a wide range of airborne particles and decompose odors such as those from painting, cooking, smoking and other sources.



Wireless Remote Control – Hand-held remote with back-lit LCD display for automatic airflow adjustment eliminates the need for manual duct adjustments.



Ideal solution for:

- Living rooms, bedrooms, primary living spaces
- Renovations, remodeling and new construction
- Sun rooms, basements, attics, garages, hot or cold rooms, and more

20 Series

Enhanced-Capacity, Wall-Mounted Heat Pump

20 SEER | Up to 12.5 HSPF

COMFORTABLE LIMITED WARRANTY* PROTECTION



* Complete warranty details available from your local dealer or at www.daikincomfort.com. To receive the 12-Year Parts Limited Warranty, online registration must be completed within 60 days of installation. Online registration is not required in California or Quebec.

Daikin 20 Series wall-mounted and floor-standing units use the latest technology combined with advanced engineering and design to make them ideal for any room in the house. Blending easily with the interior décor and providing quiet operation, these units provide optimal climate control throughout the year.

DUCTLESS SINGLE SPLIT WALL-MOUNTED HEAT PUMP AND COOLING ONLY SYSTEMS

Variable Speed

Designed for *Comfort for Life*, the Daikin 20 Series units include advanced features to ensure a comfortable experience every moment. From the wide angle louver design to the auto-swing and comfortable mode controller settings, effective heating and cooling is ensured throughout the space. These Daikin brand heat pumps and air conditioners are designed to blend in discreetly with any home design and are ideal for single rooms, enhancements, and additions up to 1,500 square feet. **

** Equipment selection should always be based on detailed load calculation performed by a qualified technician.

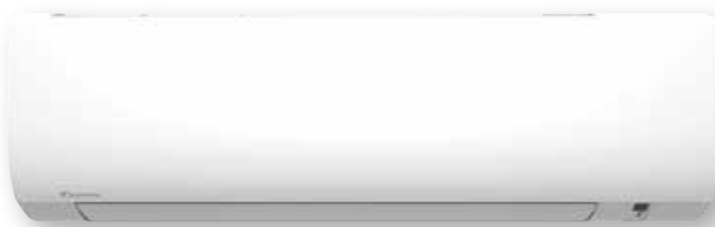
20 SEER | Up to 12.5 HSPF

Quick and easy installation for a broad range of applications



ENERGY STAR® and the **ENERGY STAR** mark are registered trademarks owned by the U.S. Environmental Protection Agency. **ENERGY STAR** products are third-party certified by an EPA-recognized certification body. Products that earn the **ENERGY STAR** prevent greenhouse gas emissions by meeting strict energy efficiency guidelines set by the U.S. Environmental Protection Agency.

This product meets ENERGY STAR requirements when appropriate coil components are used. Ask your contractor for details.



| Standard Features | Wall-Mounted | Floor-Standing | Standard Features | Wall-Mounted | Floor-Standing |
|---|--------------|----------------|--|--------------|----------------|
| Inverter Compressor | ✓ | ✓ | 208/230/1 Power Supply | ✓ | ✓ |
| Cooling Range 50° - 115° F | ✓ | ✓ | Wireless Remote Controller | ✓ | ✓ |
| Heating Range 5° - 75° F | ✓ | ✓ | Outdoor Unit Quiet Operation | ✓ | ✓ |
| Cooling Range -4° to 115° F (w/ optional wind baffle) | ✓ | ✓ | Auto Changeover (Heat Pump Only) | ✓ | ✓ |
| Heating Range -13° to 75° F (w/ Drain Pan Heater as applicable) | ✓ | ✓ | Auto Fan Speed Control | ✓ | ✓ |
| Indoor Sound Pressure as low as 19 dB(A) | ✓ | ✓ | Self Diagnostics with Digital Display | ✓ | ✓ |
| Outdoor Sound Pressure as Low as 49 dB(A) | ✓ | ✓ | Auto Restart after Power Failure | ✓ | ✓ |
| Washable Air Filter | ✓ | ✓ | Anti-Corrosion Heat Exchanger Treatment | ✓ | ✓ |
| Program Dry Function | ✓ | ✓ | Max Piping (09/12 MBH): 66' L, 49' H | ✓ | ✓ |
| Econo Mode | ✓ | ✓ | Max Piping (15 MBH): 98' L, 66' H | ✓ | ✓ |
| Powerful Operation Mode | ✓ | ✓ | Pre-charged for up to 33 ft of Liquid Line | ✓ | ✓ |

COMFORTABLE LIMITED WARRANTY* PROTECTION



* Complete warranty details available from your local dealer or at www.daikincomfort.com. To receive the 12-Year Parts Limited Warranty, online registration must be completed within 60 days of installation. Online registration is not required in California or Quebec.



20 Series

Enhanced-Capacity, Floor-Standing Heat Pump

20 SEER | Up to 11.7 HSPF

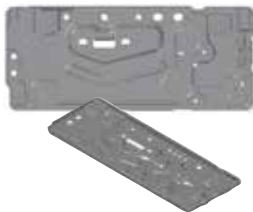


ENERGY STAR® and the **ENERGY STAR** mark are registered trademarks owned by the U.S. Environmental Protection Agency. **ENERGY STAR** products are third-party certified by an EPA-recognized certification body. Products that earn the **ENERGY STAR** prevent greenhouse gas emissions by meeting strict energy efficiency guidelines set by the U.S. Environmental Protection Agency.

This product meets ENERGY STAR requirements when appropriate coil components are used. Ask your contractor for details.

20 SEER | Up to 11.7 HSPF

| Optional Accessories | |
|----------------------|---|
| Indoor Unit | |
| ARC480A9 | AC Wireless Remote Controller (for wall-mount only) |
| ARC480A8 | HP Wireless Remote Controller (for wall-mount only) |
| BRC944B2 | Wired Remote Controller |
| BRCW901P10 | Remote Controller Cable, Plenum Rated, 10 ft. |
| BRCW901P25 | Remote Controller Cable, Plenum Rated, 25 ft. |
| KRP928BB2S | Interface adapter for DIII-NET use |
| DACA-TS1-1 | Daikin ENVi Intelligent Thermostat Kit |
| DACA-CP3-1 | Condensate Pump with Integral Float Switch |
| Outdoor Unit | |
| DACA-WB-3 | Powder-Coated, Wall-Mounted Bracket |
| KEH067A41E | Drain Pan Heater for 09 & 12 size units |
| KEH063A4E | Drain Pan Heater for 15 size units |



Enhanced Drain Pan: 20 Series models feature an enhanced drain pan with optimal drainage for reduced ice build-up in extreme conditions.

Comfort features of 20 Series



Energy Efficient – 20 SEER, Up to 11.7 HSPF, up to 12.5 EER for ultra-efficient cooling and heating operation and reduced operating costs compared to conventional lower-efficiency systems. Heat Pump and Cooling Only models available.

Capacity ranges from .75-to 2¼ tons
Sizes: 09, 12, 15k BTU/h



Undisturbed Comfort – Indoor and outdoor units offer exceptionally low sound levels as low as 49 dB(A) outdoors and as low as 19 dB(A) indoors.



Advanced Filtration – Long life, washable filters remove a wide range of airborne particles and decompose odors such as those from painting, cooking, smoking and other sources.



Wireless Remote Control – Hand-held remote with back-lit LCD display for automatic airflow adjustment eliminates the need for manual duct adjustments.



Ideal solution for:

- Living rooms, bedrooms, primary living spaces
- Renovations, remodeling, or new construction
- Sun rooms, basements, attics, garages, hot or cold rooms, and more

LV Series

Wall-Mounted

Up to 24.5 SEER | 12.5 HSPF

COMFORTABLE LIMITED WARRANTY* PROTECTION



* Complete warranty details available from your local dealer or at www.daikincomfort.com. To receive the 12-Year Parts Limited Warranty, online registration must be completed within 60 days of installation. Online registration is not required in California or Quebec.



Intelligent eye technology

Intelligent eye feature detects movement and automatically changes to an energy saving mode when movement is not detected for over 20 minutes.

Up to 24.5 SEER | 12.5 HSPF

Premium comfort features of LV Wall Mount and LV Slim Duct:



Energy Efficient –

LV Wall Mount – Up to 24.5 SEER, 12.5 HSPF and 15.1 EER

LV Slim Duct – Up to 15.5 SEER, 10.5 HSPF and 11.2 EER

Both units offer ultra-efficient cooling and heating operation and exceptional savings on utility bills compared to conventional lower-efficiency systems.



Advanced Filtration – Long life, washable filters remove a wide range of airborne particles and decompose odors, such as those from cooking, painting, smoking and other sources.



Quiet Operation – LV Slim Duct indoor and outdoor units offer exceptionally low sound levels for premium comfort without the noise.



Wireless Control – Hand-held remote features an LCD screen with back-lit display, Econo Mode, Powerful Mode, and more.

Horizontal Auto Swing – LV Wall Mount has left and right auto swing and a weekly timer.

LV Standard Features

| |
|--|
| Inverter Compressor |
| 208/230/1 Power Supply |
| Cooling Operating Range 0° - 115° F (With Wind Baffle) |
| Heating Operating Range 0° - 77° F (w/ Drain Pan Heater) |
| Precharged for up to 32 ft of Liquid Line |
| Indoor Sound Pressure as Low as 26 dB(A) |
| Outdoor Sound Pressures as Low as 48 dB(A) |
| Program Dry Function |
| Powerful Operation |
| Intelligent Eye Occupancy Sensor [†] |
| Backlit LCD Wireless Remote Controller |
| 3-D Airflow [†] |
| Weekly Timer [†] |
| Outdoor Unit Quiet Operation |
| Auto Changeover |
| Auto Fan Speed Control |
| Self Diagnostics with Digital Display |
| Auto Restart after Power Failure |
| Anti-Corrosion Treatment on Heat Exchanger |
| Max Piping (09/12 MBH): 66' Length, 49' Height |
| Max Piping (15/18/24 MBH): 98' Length, 66' Height |

[†] Wall-Mounted Models Only



ENERGY STAR® and the **ENERGY STAR** mark are registered trademarks owned by the U.S. Environmental Protection Agency. **ENERGY STAR** products are third-party certified by an EPA-recognized certification body. Products that earn the **ENERGY STAR** prevent greenhouse gas emissions by meeting strict energy efficiency guidelines set by the U.S. Environmental Protection Agency.

This product meets ENERGY STAR requirements when appropriate coil components are used. Ask your contractor for details.

COMFORTABLE LIMITED WARRANTY* PROTECTION



* Complete warranty details available from your local dealer or at www.daikincomfort.com. To receive the 12-Year Parts Limited Warranty, online registration must be completed within 60 days of installation. Online registration is not required in California or Quebec.

LV Series

Slim-Duct Concealed

Up to 15.5 SEER | 10.5 HSPF



Up to 15.5 SEER | 10.5 HSPF



| Ideal Solutions for: | LV Wall Mount | LV Slim Duct Concealed |
|--|---------------|------------------------|
| Primary living areas (master bedrooms and living rooms) | ✓ | |
| Hot or cold rooms | ✓ | |
| Rooms with poor air flow | ✓ | |
| New construction | ✓ | ✓ |
| Renovations and remodeling | ✓ | ✓ |
| Secondary bedrooms, offices, garages, basements, attics, and sun rooms | ✓ | ✓ |
| Rooms with soffit ceilings and areas that require short duct runs | | ✓ |
| Units can be installed in conditioned spaces or in unconditioned spaces if unit is properly insulated. | | ✓ |

| LV Series Optional Accessories | |
|----------------------------------|--|
| Indoor Unit | |
| ARC452 | Handheld Wireless Remote Controller (Included) |
| BRC944B2-A08 comes with 26' cord | Wired Remote Controller |
| DACA-ARCW901P10 (for Slim Duct) | Remote Controller Cable, Plenum Rated, 10 ft |
| DACA-ARCW901P25 (for Slim Duct) | Remote Controller Cable, Plenum Rated, 25 ft |
| DACA-TS1-1 | Daikin ENVi Intelligent Thermostat Kit |
| DACA-CP3-1 | Condensate Pump |
| Outdoor Unit | |
| DACA-WB-3 | Powder-Coated, Wall-Mounted Bracket |

Low Ambient Tips

1 Increase clearance under outdoor units to promote easy drainage and reduce snow and ice buildup.

2 Install optional drain pan heaters for applications in extreme climates.

3 Install Daikin ENVi thermostats to maximize energy efficiency and automatically activate secondary heat on the coldest of days or when temperatures fall below 0°F.

Quaternity

Heat Pump

Up to 26.1 SEER | 11.0 HSPF



Up to 26.1 SEER | 11.0 HSPF

Premium comfort features of Quaternity Heat Pump:



Energy Efficient – Up to 26.1 SEER, 11.0 HSPF, and 15.8 EER for efficient cooling and heating operation and exceptional savings on utility bills compared to conventional lower-efficiency systems.



Undisturbed Comfort – Indoor and outdoor units offer exceptionally low sound levels for premium comfort without the noise.



Integrated Air Cleaner – Long life, washable filters remove a wide range of airborne particles and decompose odors, such as those from cooking, painting, smoking and other sources.



Humidity Control – Active dehumidification to a relative setting. Rooms with large amount of wood floors, pianos, computer rooms that require RH setting.



Wireless Control – Hand-held remote features an LCD screen with back-lit display, Econo Mode, Powerful Mode, and more.



Ideal Solution for:

- › Hot or cold rooms
- › Rooms with poor air flow
- › Renovations and remodeling
- › Primary living areas (master bedrooms and living rooms)
- › Basements, attics and garages
- › New construction

COMFORTABLE LIMITED WARRANTY* PROTECTION



* Complete warranty details available from your local dealer or at www.daikincomfort.com. To receive the 12-Year Parts Limited Warranty, online registration must be completed within 60 days of installation. Online registration is not required in California or Quebec.



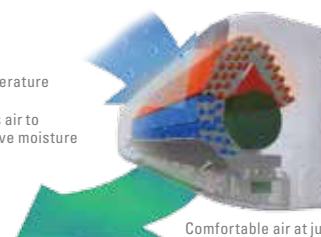
ENERGY STAR® and the **ENERGY STAR** mark are registered trademarks owned by the U.S. Environmental Protection Agency. **ENERGY STAR** products are third-party certified by an EPA-recognized certification body. Products that earn the **ENERGY STAR** prevent greenhouse gas emissions by meeting strict energy efficiency guidelines set by the U.S. Environmental Protection Agency.

This product meets ENERGY STAR requirements when appropriate coil components are used. Ask your contractor for details.

Quaternity Operation

Warms air to regulate temperature

Chills air to remove moisture



Comfortable air at just the right temperature and humidity level

Quaternity Standard Features

Inverter Compressor

208/230/1 Power Supply

Cooling Operating Range 14° - 109° F

Heating Operating Range -4° - 75° F

Precharged for up to 32 ft of Liquid Line

Indoor Sound Pressure as Low as 26 dB(A)

Outdoor Sound Pressures as Low as 46 dB(A)

Flash Streamer Technology

3-D Airflow

Comfortable Mode

Indoor Unit Quiet Operation

Auto Changeover

Auto Fan Speed Control

Self Diagnostics with Digital Display

Auto Restart after Power Failure

Anti-Corrosion Treatment on Heat Exchanger

Max Piping: 32' Length, 26' Height

Quaternity Optional Accessories

Indoor Unit

ARC447A3 Handheld Wireless Remote Controller (Included)

DACA-TS1-1 Daikin ENVi Intelligent Thermostat Kit

DACA-CP3-1 Condensate Pump with Integral Float Switch

Outdoor Unit

DACA-WB-3 Powder-Coated, Wall-Mounted Bracket

COMFORTABLE LIMITED WARRANTY* PROTECTION



* Complete warranty details available from your local dealer or at www.daikincomfort.com. To receive the 12-Year Parts Limited Warranty, online registration must be completed within 60 days of installation. Online registration is not required in California or Quebec.

MXL

Enhanced-Capacity Series

Up to 17.9 SEER | Up to 12.5 HSPF

Zoned comfort control

Homeowners fight over temperatures in their homes and have rooms that go unused for long periods. Now they can save energy and control temperatures independently in up to eight separate zones with a single outdoor unit. With available wall-mounted, concealed slim-duct, and ceiling cassette indoor options, Daikin Multi-Split Systems offer multiple indoor unit styles to meet all home comfort needs.



Up to 17.9 SEER | Up to 12.5 HSPF

Comfort features of MXL Series:



Energy Efficient — Up to 17.9 SEER, up to 12.5 HSPF, and up to 12.7 EER for ultra-efficient cooling and heating operation and exceptional savings on utility bills compared to conventional lower-efficiency systems.



Advanced Filtration — Long life, washable filters remove a wide range of airborne particles and decompose odors, such as those from cooking, painting, smoking and other sources.



Wireless Control — Hand-held remote features an LCD screen with back-lit display, Econo Mode, Powerful Mode, and more.



Ideal solution for:

- › Entire homes or floors of homes
- › Multiple zones
- › New construction
- › Primary living areas (master bedrooms and living rooms)
- › Basements



Enhanced Drain pan — MXL Series models feature an enhanced drain pan with optimal drainage for reduced ice build-up in extreme conditions.

MXS

MXS Series

Up to 18.9 SEER | Up to 12.5 HSPF

**COMFORTABLE LIMITED
WARRANTY* PROTECTION**



* Complete warranty details available from your local dealer or at www.daikincomfort.com. To receive the 12-Year Parts Limited Warranty, online registration must be completed within 60 days of installation. Online registration is not required in California or Quebec.

Zoned comfort control

Homeowners fight over temperatures in their homes and have rooms that go unused for long periods. Now they can save energy and control temperatures independently in up to 8 separate zones with a single outdoor unit. With available wall-mounted, concealed slim-duct, and ceiling cassette indoor options, Daikin Multi-Split Systems offer multiple indoor unit styles to meet all home comfort needs.



Up to 18.9 SEER | Up to 12.5 HSPF

Comfort features of MXS Series:



Energy Efficient — Up to 18.9 SEER, up to 12.5 HSPF, and up to 12.7 EER for ultra-efficient cooling and heating operation and exceptional savings on utility bills compared to conventional lower-efficiency systems.



Advanced Filtration — Long life, washable filters remove a wide range of airborne particles and decompose odors, such as those from cooking, painting, smoking and other sources.



Wireless Control — Hand-held remote features an LCD screen with back-lit display, Econo Mode, Powerful Mode, and more.



Ideal solution for:

- › Entire homes or floors of homes
- › Multiple zones
- › New construction
- › Primary living areas (master bedrooms and living rooms)
- › Basements



Enhanced Drain pan — MXS Series models feature an enhanced drain pan with optimal drainage for reduced ice build-up in extreme conditions.

Multi-Zone Combinations

_MXL__QMVJU / _MXS__NMVJU

| Max: 24k BTU/h 2MXL18 / 2MXS18 | Max: 39k BTU/h 3MXL24 / 3MXS24 | | Max: 48k BTU/h 4MXS36 | | | | |
|-----------------------------------|-----------------------------------|----------|--------------------------|----------|----------|-------------|-------------|
| 2 Zone | 2 Zone | 3 Zone | 2 Zone | 3 Zone | | 4 Zone | |
| 07+07 | 07+07 | 07+07+07 | 07+07 | 07+07+07 | 09+09+15 | 07+07+07+07 | 07+09+09+18 |
| 07+09 | 07+09 | 07+07+09 | 07+09 | 07+07+09 | 09+09+18 | 07+07+07+09 | 07+09+12+12 |
| 07+12 | 07+12 | 07+07+12 | 07+12 | 07+07+12 | 09+09+24 | 07+07+07+12 | 07+09+12+15 |
| 07+15 | 07+15 | 07+07+15 | 07+15 | 07+07+15 | 09+12+12 | 07+07+07+15 | 07+09+12+18 |
| 09+09 | 07+18 | 07+07+18 | 07+18 | 07+07+18 | 09+12+15 | 07+07+07+18 | 07+09+15+15 |
| 09+12 | 09+09 | 07+09+09 | 07+24 | 07+07+24 | 09+12+18 | 07+07+07+24 | 07+12+12+12 |
| 09+15 | 09+12 | 07+09+12 | 09+09 | 07+09+09 | 09+12+24 | 07+07+09+09 | 07+12+12+15 |
| 12+12 | 09+15 | 07+09+15 | 09+12 | 07+09+12 | 09+15+15 | 07+07+09+12 | 09+09+09+09 |
| | 09+18 | 07+09+18 | 09+15 | 07+09+15 | 09+15+18 | 07+07+09+15 | 09+09+09+12 |
| | 12+12 | 07+12+12 | 09+18 | 07+09+18 | 09+15+24 | 07+07+09+18 | 09+09+09+15 |
| | 12+15 | 07+12+15 | 09+24 | 07+09+24 | 09+18+18 | 07+07+09+24 | 09+09+09+18 |
| | 12+18 | 07+12+18 | 12+12 | 07+12+12 | 12+12+12 | 07+07+12+12 | 09+09+12+12 |
| | 15+15 | 07+15+15 | 12+15 | 07+12+15 | 12+12+15 | 07+07+12+15 | 09+09+12+15 |
| | 15+18 | 09+09+09 | 12+18 | 07+12+18 | 12+12+18 | 07+07+12+18 | 09+09+12+18 |
| | 18+18 | 09+09+12 | 12+24 | 07+12+24 | 12+12+24 | 07+07+15+15 | 09+09+15+15 |
| | | 09+09+15 | 15+15 | 07+15+15 | 12+15+15 | 07+07+15+15 | 09+12+12+12 |
| | | 09+09+18 | 15+18 | 07+15+18 | 12+15+18 | 07+09+09+09 | 09+12+12+15 |
| | | 09+12+12 | 15+24 | 07+18+18 | 12+18+18 | 07+09+09+12 | 12+12+12+12 |
| | | 09+12+15 | 18+18 | 09+09+09 | 15+15+15 | 07+09+09+15 | |
| | | 09+12+18 | 18+24 | 09+09+12 | 15+15+18 | | |
| | | 09+15+15 | 24+24 | | | | |
| | | 12+12+12 | | | | | |
| | | 12+12+15 | | | | | |

Multi-Zone Solutions

Heat or cool multiple spaces independently with 1 outdoor unit

- › Great installation flexibility and a wide choice of styles
- › Wide range of outdoor units, to which up to 8 indoor units can be connected.
- › All indoor units can be individually controlled.
- › The discrete, robust outdoor unit can easily be mounted onto a roof or terrace, or simply to the outside wall.
- › It is possible to combine different types of indoor units.

| MXS Standard Features | |
|---|--|
| Inverter Compressor | |
| Outdoor Unit Quiet Operation | |
| 208/230/1 Power Supply | |
| Auto Fan Speed Control | |
| Heating Operating Range -4° - 75° F (w/ Drain Pan Heater) | |
| Self Diagnostics with Digital Display | |
| Pre-charged for up to 131 ft of Liquid Line | |
| Outdoor Sound Pressures as Low as 50 dB(A) | |
| Anti-Corrosion Treatment on Heat Exchanger | |

| MXS Optional Accessories | |
|--------------------------|---|
| Indoor Unit | |
| BRC1E73 | Wired Navigation Remote Controller (for FFQ ceiling cassette only) |
| BRC944B2 | Wired Controller (for wall-mount and slim-duct units only) |
| BRCW901P10 | Remote Controller Cable, Plenum Rated, 10 ft. |
| BRCW901P25 | Remote Controller Cable, Plenum Rated, 25 ft. |
| BYFQ60B3W1 | Decoration Panel for FFQ Ceiling Cassette (ships separately at no charge) |
| DACA-CP3-1 | Condensate Pump with Integral Float Switch |
| DACA-TS1-1 | Daikin ENVi Intelligent Thermostat Kit (for wall-mount, slim-duct, and floor-mount units) |
| BP Unit | |
| KHRP26A22T | REFNET Joint |
| Outdoor Unit | |
| DACA-WB-3 | Powder-Coated Wall-Mount Bracket |

1

Superior efficiency and cold climate performance

Daikin Multi-split systems provide leading efficiencies that provide homeowners with opportunities for regional and local rebates, along with lower monthly bills compared to lower SEER units. With exceptional Heating Seasonal Performance Factors (HSPF) and Coefficient of Performance (COP) levels, homeowners and utility companies will fall in love with the savings they will achieve.

2

Intelligent eye technology

Daikin brand Multi-Splits offer indoor units equipped with an intelligent eye feature† that detects movement and automatically changes to an energy-saving mode when movement is not detected for over 20 minutes. Normal operation resumes once movement is detected, ensuring a comfortable experience and offering savings up to 20% in cooling and up to 30% in heating, compared to units without movement detection.

† Available on select models

SkyAir Heat Pumps and Air Conditioners



Quick and easy installation for a broad range of applications

SkyAir is the ultimate ducted and duct free solution for light commercial and residential whole house applications. Ranging from 18,000 Btu/h to 42,000 Btu/h, these innovative systems provide energy efficiency, technological reliability and installation flexibility.



SkyAir systems key features and benefits include:

- › DC fan motor improves efficiency compared to conventional AC motors.
- › Aero spiral fan and grille minimizes turbulence and increases sound reduction.
- › Reluctance brushless DC compressor increases efficiency compared to fixed-speed compressor technology.
- › Swing Compressor Model – Friction and refrigerant leakage are minimized for greater energy savings.
- › Scroll Compressor Model – Suctioned gas is compressed in the scroll section before reaching the heated motor so that non-expanded gas is compressed, resulting in high-efficiency compression.
- › Long piping lengths up to 230 ft. allow layout flexibility.
- › Anti-corrosion treatment on the outdoor heat exchanger increases durability.

SkyAir Air Conditioner

Installation Ease

COMFORTABLE LIMITED WARRANTY* PROTECTION



*Complete warranty details available from your local dealer or at www.daikincomfort.com.

FAQ / FTXS Series

18,000 - 36,000 BTU/h

Heat Pump or Cooling Only

- Up to 18.6 SEER | Up to 8.7 HSPF
- Vertical auto-swing function ensures efficient air distribution
- Removable front panel for easy cleaning
- Mold-resistant, washable filters



FTQ Inverter Ducted

18,000 – 42,000 BTU/h

Heat Pump

- Up to 20.0 SEER | Up to 12.0 HSPF
- Low ambient heat operation down to -4°F
- Upflow or horizontal right configurations
- Field-installed electric heat options available from 3 kW to 15 kW
- Match with RZQ Heat Pump Models



SkyAir Mid-Static (< 0.8) Models

FBQ Series

18,000 – 42,000 BTU/h

Heat Pump or Cooling Only

- Up to 17.5 SEER | Up to 10.6 HSPF
- Medium external static pressure (ESP) capabilities up to 0.8" W.G.
- Three user selected fan speeds available plus fan "Auto" logic
- Built-in condensate pump
- Bottom access for easy service
- Match with RZQ Heat Pump or RZR cooling-only outdoor models



Ceiling Suspended

FHQ Series

- Up to 18.1 SEER | Up to 11.1 HSPF
- Hallways, apartments, class rooms, churches



Daikin Zoning Kit – DZK



Control multiple (up to 6) individually-controlled ducted zones

- Includes zoning box (with controls), main thermostat, and wireless zone thermostat(s).
- Optimizes system hardware cost – using fewer Indoor units to serve more zones
- Increases comfort levels by allowing more individual zone control vs. standard (non-zoned) ducted system
- Reduces installation expense and maintenance costs compared to traditional ducted zoning systems



SkyAir Roundflow Cassette

FCQ Series

18,000 – 42,000 BTU/h

Heat Pump or Cooling Only

- Up to 18.6 SEER | Up to 10.3 HSPF
- 23 configurable airflow patterns ensure ideal airflow distribution
- 360° airflow reduces draft
- Stain-resistant decoration panel allows for easy cleaning
- Match with RZQ Heat Pump or RZR cooling-only outdoor models



Ductless Products Specifications



15 Series

Wall-Mounted Units

15 SEER | 8.2 HSPF



15 SERIES SYSTEM PERFORMANCE

| NOMINAL CAPACITY CLASS | | 9,000 | 12,000 | 18,000 | 24,000 |
|-----------------------------|-------|--------------|--------------|--------------|--------------|
| Cooling Capacity (Rated) | BTU/h | 9,000 | 12,000 | 17,100 | 22,000 |
| Cooling Capacity (Min–Max) | BTU/h | 4,400–10,200 | 4,400–13,000 | 5,100–18,000 | 5,100–23,000 |
| Heating Capacity (Rated)* | BTU/h | 9,000 | 12,000 | 18,000 | 22,000 |
| Heating Capacity (Min–Max)* | BTU/h | 4,400–10,000 | 4,400–14,000 | 5,100–19,100 | 5,100–25,400 |
| SEER / EER | | 15 / 10.4 | 15 / 10.5 | 15 / 12.2 | 15 / 9.2 |
| COP / HSPF* | | 3.9 / 8.2 | 3.9 / 8.2 | 3.8 / 8.2 | 3.6 / 8.2 |

ELECTRICAL DATA

| | | | | | |
|--------------------------------|---------|--------------------|--------------------|--------------------|--------------|
| Power Supply | V/Ph/Hz | 208–230/1/60 | 208–230/1/60 | 208–230/1/60 | 208–230/1/60 |
| Minimum Circuit Amps | A | 7.9 Cool/10.1 Heat | 8.6 Cool/10.1 Heat | 9.5 Cool/13.3 Heat | 18.3 |
| Maximum Overcurrent Protection | A | 15 | 15 | 15 | 20 |
| Power Consumption - Cooling | kW | 0.9 | 1.1 | 1.4 | 2.4 |
| Power Consumption - Heating* | kW | 0.7 | 0.9 | 1.4 | 1.8 |

INDOOR WALL-MOUNTED UNITS

| MODEL NAME | COOLING ONLY | | FTKN09NMVJU | FTKN12NMVJU | FTKN18NMVJU | FTKN24NMVJU |
|--------------------------------------|------------------|-----|-----------------|-----------------|-----------------|-----------------|
| | HEAT PUMP | | FTXN09NMVJU | FTXN12NMVJU | FTXN18NMVJU | FTXN24NMVJU |
| Moisture Removal | Q/hr | | 1.3 | 1.8 | 4.1 | 4.8 |
| Airflow-Wet (H/M/L/SL) | CFM | | 403/286/219/145 | 424/300/247/141 | 713/579/455/417 | 713/579/491/417 |
| Airflow-Dry (H/M/L/SL)* | CFM | | 406/318/247/215 | 413/321/247/212 | 660/568/470/420 | 745/604/470/420 |
| Sound Pressure - Cooling (H/M/L/SL) | dB(A) | | 43/35/27/19 | 44/36/30/19 | 48/44/38/33 | 51/45/39/34 |
| Sound Pressure - Heating (H/M/L/SL)* | dB(A) | | 43/35/28/25 | 44/36/29/26 | 48/42/37/33 | 41/43/37/34 |
| Piping Connections | Liquid (O.D.) | in. | Ø 1/4 | Ø 1/4 | Ø 1/4 | Ø 1/4 |
| | Gas (O.D.) | in. | Ø 3/8 | Ø 3/8 | Ø 1/2 | Ø 5/8 |
| | Condensate Drain | in. | Ø 5/8 | Ø 5/8 | Ø 11/16 | Ø 11/16 |
| Dimensions (H x W x D) | in. | | 11¼ X 30¾ X 8¾ | | 11½ X 39 x 10¾ | |
| Net Weight | lbs. | | 18 | 18 | 26 | 26 |

OUTDOOR UNITS

| MODEL NAME | COOLING ONLY | | RKN09NMVJU | RKN12NMVJU | RKN18NMVJU | RKN24NMVJU |
|--|--------------|--|-----------------|------------|----------------|------------|
| | HEAT PUMP | | RXN09NMVJU | RXN12NMVJU | RXN18NMVJU | RXN24NMVJU |
| Sound Pressure Level: Cooling/Heating* | dB(A) | | 46/48 | 49/49 | 54/54 | 55/55 |
| Operating Range - Cooling | °F DB | | 50° – 115° | 50° – 115° | 50° – 115° | 50° – 115° |
| Operating Range - Heating* | °F DB | | 5° – 75° | 5° – 75° | 5° – 75° | 5° – 75° |
| Max. Piping Length | ft. | | 49 | 49 | 98.4 | 98.4 |
| Max. Piping Height | ft. | | 39 | 39 | 65.6 | 65.6 |
| Dimensions (H x W x D) | in. | | 21½ X 26½ X 11½ | | 29 x 34¼ X 12½ | |
| Net Weight | lbs. | | 53 | 53 | 97 | 97 |

* Applicable to heat pump models only ** Cutting a jumper is required. Refer to installation manual.



ENERGY STAR® and the **ENERGY STAR** mark are registered trademarks owned by the U.S. Environmental Protection Agency. **ENERGY STAR** products are third-party certified by an EPA-recognized certification body. Products that earn the **ENERGY STAR** prevent greenhouse gas emissions by meeting strict energy efficiency guidelines set by the U.S. Environmental Protection Agency.

This product meets ENERGY STAR requirements when appropriate coil components are used. Ask your contractor for details.

19 Series

Wall-Mounted Units

Up to 19 SEER | 9.0 HSPF



| 19 SERIES SYSTEM PERFORMANCE | | | | | | |
|--|---------------------------|-------|--------------------------|--------------------------|--------------------------|--------------------------|
| NOMINAL CAPACITY CLASS | | | 9,000 | 12,000 | 18,000 | 24,000 |
| Cooling Capacity (Rated) | BTU/h | | 9,000 | 10,900 | 18,000 | 21,200 |
| Cooling Capacity (Min–Max) | BTU/h | | 4,400–10,200 | 4,400–13,300 | 5,500–20,000 | 5,500–24,000 |
| Heating Capacity (Rated)* | BTU/h | | 10,000 | 13,500 | 21,600 | 24,000 |
| Heating Capacity (Min–Max)* | BTU/h | | 4,400–13,000 | 4,400–16,400 | 5,500–24,000 | 5,800–27,600 |
| SEER / EER | | | 19/ 12.5 | 19 / 12.5 | 18 / 12.5 | 18 / 12.5 |
| COP / HSPF* | | | 4.1 / 9 | 3.8 / 9 | 3.6 / 9 | 3.5 / 9 |
| ELECTRICAL DATA | | | | | | |
| Power Supply | V/Ph/Hz | | 208-230/1/60 | 208-230/1/60 | 208-230/1/60 | 208-230/1/60 |
| Minimum Circuit Amps | A | | 12.1 | 12.2 | 18.3 | 18.3 |
| Maximum Overcurrent Protection | A | | 15 | 15 | 20 | 20 |
| Power Consumption - Cooling | kW | | 0.7 | 0.9 | 1.4 | 1.7 |
| Power Consumption - Heating* | kW | | 0.7 | 1.0 | 1.8 | 2.0 |
| INDOOR WALL-MOUNTED UNITS | | | | | | |
| MODEL NAME | COOLING ONLY HEAT PUMP | | FTK09NMVJU FTX09NMVJU | FTK12NMVJU FTX12NMVJU | FTK18NMVJU FTX18NMVJU | FTK24NMVJU FTX24NMVJU |
| Moisture Removal | | Q/hr | 1.3 | 1.8 | 4.1 | 4.8 |
| Airflow-Wet (H/M/L/SL) | | CFM | 417/297/244/141 | 434/311/247/145 | 713/579/448/403 | 713/579/512/403 |
| Airflow-Dry (H/M/L/SL)* | | CFM | 403/328/251/215 | 413/321/258/219 | 745/604/470/420 | 745/604/470/420 |
| Sound Pressure - Cooling (H/M/L/SL) | | dB(A) | 43/36/30/19 | 45/37/30/19 | 49/44/38/33 | 53/45/39/34 |
| Sound Pressure - Heating (H/M/L/SL)* | | dB(A) | 43/36/29/25 | 45/37/30/26 | 49/42/37/33 | 53/43/37/34 |
| Piping Connections | Liquid (O.D.) | in. | ø 1/4 | ø 1/4 | ø 1/4 | ø 1/4 |
| | Gas (O.D.) | in. | ø 3/8 | ø 3/8 | ø 1/2 | ø 5/8 |
| | Condensate Drain | in. | ø 5/8 | ø 5/8 | ø 11/16 | ø 11/16 |
| Dimensions (H x W x D) | | in. | 11 1/4 X 30 3/8 X 8 3/4 | | 11 1/4 X 39 x 10 3/8 | |
| Net Weight | | lbs. | 18 | 18 | 26 | 26 |
| OUTDOOR UNITS | | | | | | |
| MODEL NAME | COOLING ONLY HEAT PUMP | | RK09NMVJU RX09NMVJU | RK12NMVJU RX12NMVJU | RK18NMVJU RX18NMVJU | RK24NMVJU RX24NMVJU |
| Sound Pressure Level - Cooling/Heating* | | dB(A) | 46/48 | 49/49 | 54/54 | 55/55 |
| Operating Range - Cooling | | °F DB | 50°– 115° | 50°– 115° | 50°– 115° | 50°– 115° |
| Operating Range - Low Ambient Cooling** | | °F DB | 14° – 115° | 14° – 115° | 14° – 115° | 14° – 115° |
| Operating Range - Cooling with Optional Wind Baffle** | | °F DB | -4° – 115° | -4° – 115° | -4° – 115° | -4° – 115° |
| Operating Range - Heating* | | °F DB | 5° – 75° | 5° – 75° | 5° – 75° | 5° – 75° |
| Operating Range - Heating with Optional Drain Pan Heater (as applicable) | | °F DB | -4° – 75° | -4° – 75° | -4° – 75° | -4° – 75° |
| Max. Piping Length | | ft. | 65.6 | 65.6 | 98.4 | 98.4 |
| Max. Piping Height | | ft. | 49.2 | 49.2 | 65.6 | 65.6 |
| Dimensions (H x W x D) | | in. | 21 1/2 X 26 1/2 X 11 1/2 | | 29 x 34 1/2 X 12 1/2 | |
| Net Weight | | lbs. | 55 | 60 | 97 | 108 |

* Applicable to heat pump models only ** Cutting a jumper is required. Refer to installation manual.

20 Series

Enhanced-Capacity, Wall-Mounted

20 SEER | Up to 12.5 HSPF



ENERGY STAR® and the **ENERGY STAR** mark are registered trademarks owned by the U.S. Environmental Protection Agency. **ENERGY STAR** products are third-party certified by an EPA-recognized certification body. Products that earn the **ENERGY STAR** prevent greenhouse gas emissions by meeting strict energy efficiency guidelines set by the U.S. Environmental Protection Agency.

This product meets ENERGY STAR requirements when appropriate coil components are used. Ask your contractor for details.



| SYSTEM PERFORMANCE | | | | |
|---|--------|--|--|--|
| Nominal Capacity | BTU/h | 9,000 | 12,000 | 15,000 |
| Cooling Capacity (Rated) | BTU/h | 9,000 | 10,900 | 15,000 |
| Cooling Capacity (Min-Max) | BTU/h | 4,400 - 10,900 | 4,400 - 13,300 | 5,800 - 18,400 |
| Heating Capacity (Rated) | BTU/h | 10,900 | 13,600 | 18,300 |
| Heating Capacity (Min-Max) | BTU/h | 4,400 - 16,000 | 4,400 - 18,800 | 5,800 - 24,600 |
| Heating Capacity (@ 5F - Max) | BTU/h | 10,900 | 14,300 | 18,300 |
| SEER / EER | | 20.0 / 12.5 | 20.0 / 12.5 | 20.0 / 13.0 |
| COP / HSPF | | 4.2 / 12.5 | 3.9 / 12.0 | 4.0 / 12.5 |
| ENERGY STAR® Certified Combinations | | YES | YES | YES |
| ELECTRICAL DATA | | | | |
| Power Supply | V/φ/Hz | 208-230/1/60 | | |
| Minimum Circuit Amps | A | 9.5 | 13.0 | 13.0 |
| Max Overcurrent Protection | A | 15 | 15 | 15 |
| Power Consumption - Cooling | kW | 0.7 | 0.9 | 1.2 |
| Power Consumption - Heating | kW | 0.8 | 1.0 | 1.3 |
| INDOOR UNITS | | | | |
| MODEL NAME | | FTX09NMVJU | FTX12NMVJU | FTX15NMVJU |
| Moisture Removal | Gal/hr | 0.3 | 0.5 | 0.6 |
| Airflow - Cooling (H/M/L/SL) | CFM | 417 / 297 / 244 / 141 | 434 / 311 / 247 / 145 | 593 / 505 / 431 / 367 |
| Airflow - Heating (H/M/L/SL) | CFM | 403 / 328 / 251 / 215 | 413 / 321 / 258 / 219 | 653 / 554 / 470 / 399 |
| Sound Pressure - Cooling (H/M/L/SL) | dB(A) | 43 / 36 / 30 / 19 | 45 / 37 / 30 / 19 | 45 / 41 / 36 / 33 |
| Sound Pressure - Heating (H/M/L/SL) | dB(A) | 43 / 36 / 29 / 25 | 45 / 37 / 30 / 26 | 45 / 41 / 37 / 33 |
| Piping Connection | Liquid | in. | 1/4 | 1/4 |
| | Gas | in. | 3/8 | 1/2 |
| | Drain | in. | 5/8 | 5/8 |
| Dimensions (HxWxD) | in. | 11 $\frac{1}{4}$ x 30 $\frac{5}{16}$ x 8 $\frac{3}{4}$ | 11 $\frac{1}{4}$ x 30 $\frac{5}{16}$ x 8 $\frac{3}{4}$ | 11 $\frac{1}{4}$ x 39 x 10 $\frac{1}{2}$ |
| Net Weight | lbs. | 18 | 18 | 27 |
| OUTDOOR UNITS | | | | |
| MODEL NAME | | RXL09QMVJU | RXL12QMVJU | RXL15QMVJU |
| Sound Pressure Level - Cooling/Heating | dB(A) | 49/49 | 50/50 | 50/55 |
| Operating Range - Cooling | FDB | 50-115 | 50-115 | 50-115 |
| Operating Range - Low Ambient Cooling | FDB | 14-115 | 14-115 | 14-115 |
| Operating Range - w/ wind baffle | FDB | -4-115 | -4-115 | -4-115 |
| Operating Range - Heating | FDB | 5-75 | 5-75 | 5-75 |
| Operating Range - w/ drain pan heater as applicable | FDB | -13-75 | -13-75 | -13-75 |
| Max Piping Length | ft | 65.6 | 65.6 | 98.5 |
| Max Piping Height | ft | 49.2 | 49.2 | 65.6 |
| Dimensions (HxWxD) | in. | 21 $\frac{1}{2}$ x 26 $\frac{9}{16}$ x 11 $\frac{3}{16}$ | 21 $\frac{1}{2}$ x 26 $\frac{9}{16}$ x 11 $\frac{3}{16}$ | 28 $\frac{15}{16}$ x 34 $\frac{3}{4}$ x 12 $\frac{1}{2}$ |
| Net Weight | lbs | 60 | 70 | 108 |



ENERGY STAR® and the **ENERGY STAR** mark are registered trademarks owned by the U.S. Environmental Protection Agency. **ENERGY STAR** products are third-party certified by an EPA-recognized certification body. Products that earn the **ENERGY STAR** prevent greenhouse gas emissions by meeting strict energy efficiency guidelines set by the U.S. Environmental Protection Agency.

This product meets ENERGY STAR requirements when appropriate coil components are used. Ask your contractor for details.

20 Series

Enhanced-Capacity, Floor-Standing

20 SEER | Up to 11.7 HSPF



| SYSTEM PERFORMANCE | | | | | |
|---|--------|----------------------------|----------------------------|----------------------------|--|
| Nominal Capacity | BTU/h | 9,000 | 12,000 | 15,000 | |
| Cooling Capacity (Rated) | BTU/h | 9,000 | 10,200 | 15,000 | |
| Cooling Capacity (Min-Max) | BTU/h | 4,400 - 10,200 | 4,400 - 12,300 | 5,800 - 17,100 | |
| Heating Capacity (Rated) | BTU/h | 10,100 | 13,000 | 18,000 | |
| Heating Capacity (Min-Max) | BTU/h | 4,400 - 14,300 | 4,400 - 17,100 | 5,800 - 24,000 | |
| Heating Capacity (@ 5F - Max) | BTU/h | 10,100 | 13,000 | 18,000 | |
| SEER / EER | | 20.0 / 12.5 | 20.0 / 12.0 | 20.0 / 12.5 | |
| COP / HSPF | | 4.1 / 11.7 | 4.0 / 11.4 | 3.8 / 11.3 | |
| ENERGY STAR® Certified Combinations | | YES | NO | YES | |
| ELECTRICAL DATA | | | | | |
| Power Supply | V/φ/Hz | 208-230/1/60 | | | |
| Minimum Circuit Amps | A | 9.5 | 13.0 | 13.0 | |
| Max Overcurrent Protection | A | 15 | 15 | 15 | |
| Power Consumption - Cooling | kW | 0.7 | 0.9 | 1.2 | |
| Power Consumption - Heating | kW | 0.7 | 0.1 | 1.4 | |
| INDOOR UNITS | | | | | |
| Model Name | IDU | FVXS09NVJU | FVXS12NVJU | FVXS15NVJU | |
| Moisture Removal | Gal/hr | 0.3 | 0.5 | 0.6 | |
| Airflow - Cooling (H/M/L/SL) | CFM | 290 / 230 / 169 / 145 | 300 / 237 / 173 / 159 | 378 / 325 / 275 / 233 | |
| Airflow - Heating (H/M/L/SL) | CFM | 311 / 244 / 177 / 155 | 332 / 258 / 184 / 166 | 417 / 357 / 300 / 251 | |
| Sound Pressure - Cooling (H/M/L/SL) | dB(A) | 38 / 32 / 26 / 23 | 39 / 33 / 27 / 24 | 44 / 40 / 36 / 32 | |
| Sound Pressure - Heating (H/M/L/SL) | dB(A) | 38 / 32 / 26 / 23 | 39 / 33 / 27 / 24 | 45 / 40 / 36 / 32 | |
| Piping Connection | Liquid | in | 1/4 | 1/4 | |
| | Gas | in | 3/8 | 1/2 | |
| | Drain | in | 13/16 | 13/16 | |
| Dimensions (HxWxD) | in | 23 3/8 x 27 9/16 x 8 3/4 | 23 3/8 x 27 9/16 x 8 3/4 | 23 3/8 x 27 9/16 x 8 3/4 | |
| Net Weight | lbs | 31 | 31 | 31 | |
| OUTDOOR UNITS | | | | | |
| Model Name | ODU | RXL09QMVJU | RXL12QMVJU | RXL15QMVJU | |
| Sound Pressure Level - Cooling/Heating | dB(A) | 49 / 49 | 50 / 50 | 50 / 55 | |
| Operating Range - Cooling | FDB | 50-115 | 50-115 | 50-115 | |
| Operating Range - Low Ambient Cooling | FDB | 14-115 | 14-115 | 14-115 | |
| Operating Range - w/ wind baffle | FDB | -4-115 | -4-115 | -4-115 | |
| Operating Range - Heating | FDB | 5-75 | 5-75 | 5-75 | |
| Operating Range - w/ drain pan heater as applicable | FDB | -13-75 | -13-75 | -13-75 | |
| Max Piping Length | ft | 65.6 | 65.6 | 98.5 | |
| Max Piping Height | ft | 49.2 | 49.2 | 65.6 | |
| Dimensions (HxWxD) | in | 21 1/8 x 26 9/16 x 11 3/16 | 21 1/8 x 26 9/16 x 11 3/16 | 28 15/16 x 34 3/4 x 12 1/2 | |
| Net Weight | lbs | 60 | 70 | 108 | |

LV Series

Wall-Mounted Units

Up to 24.5 SEER | Up to 12.5 HSPF



ENERGY STAR® and the **ENERGY STAR** mark are registered trademarks owned by the U.S. Environmental Protection Agency. **ENERGY STAR** products are third-party certified by an EPA-recognized certification body. Products that earn the **ENERGY STAR** prevent greenhouse gas emissions by meeting strict energy efficiency guidelines set by the U.S. Environmental Protection Agency.

This product meets ENERGY STAR requirements when appropriate coil components are used. Ask your contractor for details.



LV SERIES HIGH EFFICIENCY SYSTEM PERFORMANCE

| NOMINAL CAPACITIES | | 0.75 Ton | 1.0 Ton | 1.25 Ton | 1.5 Ton | 2.0 Ton |
|----------------------------|-------|--------------|--------------|--------------|--------------|--------------|
| Cooling Capacity (Rated) | BTU/h | 9,000 | 12,000 | 15,000 | 18,000 | 21,500 |
| Cooling Capacity (Min–Max) | BTU/h | 4,400–10,600 | 4,800–13,800 | 5,800–18,000 | 5,800–21,600 | 7,800–25,800 |
| Heating Capacity (Rated) | BTU/h | 12,000 | 14,400 | 18,000 | 21,600 | 25,400 |
| Heating Capacity (Min–Max) | BTU/h | 4,400–15,600 | 4,800–18,000 | 5,800–22,300 | 5,800–26,700 | 7,800–31,400 |
| SEER / EER | | 24.5 / 15.3 | 23 / 12.8 | 20.6 / 14.4 | 20.3 / 12.7 | 20 / 12.5 |
| COP / HSPF | | 4.5 / 12.5 | 4.4 / 12.5 | 4 / 11.6 | 3.7 / 11 | 3.4 / 10.6 |

ELECTRICAL DATA

| | | | | | | |
|--------------------------------|---------|--------------|--------------|--------------|--------------|--------------|
| Power Supply | V/Ph/Hz | 208-230/1/60 | 208-230/1/60 | 208-230/1/60 | 208-230/1/60 | 208-230/1/60 |
| Minimum Circuit Amps | A | 8 | 8.8 | 13.8 | 13.8 | 17.5 |
| Maximum Overcurrent Protection | A | 15 | 15 | 20 | 20 | 20 |
| Power Consumption - Cooling | W | 590 | 940 | 1,040 | 1,420 | 1,720 |
| Power Consumption - Heating | W | 790 | 970 | 1,320 | 1,710 | 2,210 |

INDOOR UNITS - FTXS_LVJU WALL-MOUNTED UNITS

| MODEL NAME | | FTXS09LVJU | FTXS12LVJU | FTXS15LVJU | FTXS18LVJU | FTXS24LVJU |
|-------------------------------------|------------------|-----------------------------|-----------------|-----------------|-----------------------------|-----------------|
| Moisture Removal | gal/h | 0.3 | 0.5 | 0.8 | 1 | 1.2 |
| Airflow-Wet (H/M/L/SL) | CFM | 381/279/194/145 | 403/307/205/155 | 568/477/385/360 | 584/484/385/360 | 643/494/350/328 |
| Airflow-Dry (H/M/L/SL) | CFM | 420/321/233/219 | 438/335/240/212 | 593/505/417/371 | 625/526/431/399 | 699/572/445/403 |
| Sound Pressure - Cooling (H/M/L/SL) | dB(A) | 41/33/25/22 | 45/37/29/23 | 45/40/35/32 | 46/41/36/33 | 51/42/37/34 |
| Sound Pressure - Heating (H/M/L/SL) | dB(A) | 42/35/28/25 | 45/39/29/26 | 43/38/33/30 | 45/40/35/32 | 48/42/37/34 |
| Piping Connections | Liquid (O.D.) | in. | Ø 1/4 | Ø 1/4 | Ø 1/4 | Ø 1/4 |
| | Gas (O.D.) | in. | Ø 3/8 | Ø 3/8 | Ø 1/2 | Ø 5/8 |
| | Condensate Drain | in. | Ø 5/8 | Ø 5/8 | Ø 5/8 | Ø 5/8 |
| Dimensions (H x W x D) | in. | 11 1/8" X 31 1/2" X 8 7/16" | | | 13 3/4" X 41 5/16" X 9 3/4" | |
| Net Weight | lbs. | 20 | 22 | 31 | 31 | 31 |

OUTDOOR UNITS - RXS_LVJU HEAT PUMP

| MODEL NAME | | RXS09LVJU | RXS12LVJU | RXS15LVJU | RXS18LVJU | RXS24LVJU |
|--|-------|-----------------------------|------------|------------|---------------------------------|------------|
| Sound Pressure Level - Cooling | dB(A) | 47/43 | 49/44 | 47/44 | 49/46 | 52/49 |
| Sound Pressure Level - Heating | dB(A) | 48/44 | 49/45 | 48/45 | 49/46 | 52/49 |
| Operating Range - Cooling | °F DB | 14° – 115° | 14° – 115° | 14° – 115° | 14° – 115° | 14° – 115° |
| Operating Range - Cooling ¹ | °F DB | 0° – 115° | 0° – 115° | 0° – 115° | 0° – 115° | 0° – 115° |
| Operating Range - Heating | °F DB | 5° – 77° | 5° – 77° | 5° – 77° | 5° – 77° | 5° – 77° |
| Max. Piping Length | ft. | 65.6 | 65.6 | 98.4 | 98.4 | 98.4 |
| Max. Piping Height | ft. | 49.2 | 49.2 | 65.6 | 65.6 | 65.6 |
| Dimensions (H x W x D) | in. | 21 1/8" X 30 3/8" X 11 1/4" | | | 28 15/16" X 32 1/2" X 11 13/16" | |
| Net Weight | lbs. | 75 | 75 | 104 | 104 | 159 |

¹ with Optional Wind Baffle

Slim-Duct Units

Up to 15.5 SEER | Up to 10.4 HSPF



| LV SERIES STANDARD EFFICIENCY SYSTEM PERFORMANCE | | | | |
|---|------------------|--|-----------------|---------|
| NOMINAL CAPACITIES | | 0.75 Ton | 1.0 Ton | |
| Cooling Capacity (Rated) | BTU/h | 8,500 | 11,500 | |
| Cooling Capacity (Min-Max) | BTU/h | 4,400 - 8,500 | 4,800 - 11,500 | |
| Heating Capacity (Rated) | BTU/h | 10,000 | 11,500 | |
| Heating Capacity (Min-Max) | BTU/h | 4,400 - 10,000 | 4,800 - 11,500 | |
| SEER / EER | | 15.1 / 11.2 | 15.5 / 9.1 | |
| COP / HSPF | | 3.5 / 10.3 | 3.5 / 10.4 | |
| ELECTRICAL DATA | | | | |
| Power Supply | V/Ph/Hz | 208-230/1/60 | 208-230/1/60 | |
| Minimum Circuit Amps | A | 8 | 8.8 | |
| Maximum Overcurrent Protection | A | 15 | 15 | |
| Power Consumption - Cooling | W | 760 | 1,260 | |
| Power Consumption - Heating | W | 850 | 960 | |
| INDOOR UNITS - FDXS_LVJU SLIM DUCT BUILT-IN UNITS | | | | |
| MODEL NAME | | FDXS09LVJU | FDXS12LVJU | |
| External Static Pressure | | 0.1 | 0.1 | |
| Moisture Removal | | 2.5 | 4 | |
| Airflow-Wet (H/M/L/SL) | | 305/280/260/235 | 305/280/260/235 | |
| Airflow-Dry (H/M/L/SL) | | 305/280/260/235 | 305/280/260/235 | |
| Sound Pressure Level - Cooling (H/M/L) | | 35/33/31 | 35/33/31 | |
| Sound Pressure Level - Heating (H/M/L) | | 35/33/31 | 35/33/31 | |
| Piping Connections | Liquid (O.D.) | in. | Ø 1/4 | Ø 1/4 |
| | Gas (O.D.) | in. | Ø ¾ | Ø ¾ |
| | Condensate Drain | in. | Ø 25/32 | Ø 25/32 |
| Dimensions (H x W x D) | | 7⅞ X 27 ⁹ / ₁₆ X 24 ⁷ / ₁₆ | | |
| Net Weight | | 47 | 47 | |
| OUTDOOR UNITS - RXS_LVJU HEAT PUMP | | | | |
| MODEL NAME | | RXS09LVJU | RXS12LVJU | |
| Sound Pressure Level - Cooling (H/L) | | 47/43 | 49/44 | |
| Sound Pressure Level - Heating (H/L) | | 48/44 | 49/45 | |
| Operating Range - Cooling | | 14° – 115° | 14° – 115° | |
| Operating Range - Cooling ¹ | | 0° – 115° | 0° – 115° | |
| Operating Range - Heating | | 5° – 77° | 5° – 77° | |
| Max. Piping Length | | 65.6 | 65.6 | |
| Max. Piping Height | | 49.2 | 49.2 | |
| Dimensions (H x W x D) | | 21⅞ X 30⅜ x 11¼ | | |
| Net Weight | | 75 | 75 | |

¹ with Optional Wind Baffle

Quaternity Series

Wall-Mounted Units

Up to 26.1 SEER | Up to 11.0 HSPF



QUATERNITY PREMIUM EFFICIENCY SYSTEM PERFORMANCE

NOMINAL CAPACITIES

| | | | | |
|------------------------------|-------|----------------|----------------|----------------|
| Cooling Capacity (Rated) | BTU/h | 9,000 | 12,000 | 15,000 |
| Cooling Capacity (Min – Max) | BTU/h | 5,300 - 12,300 | 5,300 - 15,700 | 5,300 - 18,000 |
| Heating Capacity (Rated) | BTU/h | 12,000 | 16,000 | 18,000 |
| Heating Capacity (Min – Max) | BTU/h | 4,400 - 18,000 | 4,400 - 19,100 | 4,400 - 21,200 |
| SEER / EER | | 26.1 / 15.8 | 24.2 / 14 | 21 / 12.9 |
| COP / HSPF | | 4.5 / 11 | 4.0 / 10.6 | 4.0 / 10 |

ELECTRICAL DATA

| | | | | |
|--------------------------------|---------|--------------|--------------|--------------|
| Power Supply | V/Ph/Hz | 208-230/1/60 | 208-230/1/60 | 208-230/1/60 |
| Minimum Circuit Amps | A | 14.5 | 14.5 | 14.5 |
| Maximum Overcurrent Protection | A | 15 | 15 | 15 |
| Power Consumption - Cooling | W | 250 - 900 | 260 - 1,300 | 260 - 1,930 |
| Power Consumption - Heating | W | 220 - 1,900 | 220 - 2,100 | 230 - 2,120 |

INDOOR UNITS - FTXG_HVJU WALL-MOUNTED UNITS

| MODEL NAME | | | FTXG09HVJU | FTXG12HVJU | FTXG15HVJU |
|----------------------------------|------------------|------|---|-------------|-------------|
| Moisture Removal | gal/h | | 0.4 | 0.5 | 0.6 |
| Airflow-Wet (H/M/L) | CFM | | 420/325/230 | 459/346/240 | 487/371/258 |
| Airflow-Dry (H/M/L) | CFM | | 438/346/258 | 470/367/272 | 494/392/293 |
| Sound Pressure - Cooling (H/M/L) | dB(A) | | 42/33/26 | 43/35/27 | 45/37/29 |
| Sound Pressure - Heating (H/M/L) | dB(A) | | 42/35/28 | 43/36/29 | 44/38/31 |
| Piping Connections | Liquid (O.D.) | in. | Ø 1/4 | Ø 1/4 | Ø 1/4 |
| | Gas (O.D.) | in. | Ø 3/8 | Ø 3/8 | Ø 3/8 |
| | Condensate Drain | in. | Ø 11/16 | Ø 11/16 | Ø 11/16 |
| Dimensions (H x W x D) | | in. | 12 x 35 ¹ / ₃₂ x 8 ⁷ / ₃₂ | | |
| Net Weight | | lbs. | 31 | 31 | 31 |

OUTDOOR UNITS - RXG_HVJU HEAT PUMP

| MODEL NAME | | | RXG09HVJU | RXG12HVJU | RXG15HVJU |
|--|-------|------|--|------------|------------|
| Sound Pressure Level - Cooling/Heating | dB(A) | | 46/46 | 49/48 | 50/50 |
| Operating Range - Cooling | °F DB | | 14° - 109° | 14° - 109° | 14° - 109° |
| Operating Range - Heating | °F DB | | -4° - 75° | -4° - 75° | -4° - 75° |
| Max. Piping Length | ft. | | 32 | 32 | 32 |
| Max. Piping Height | ft. | | 26 | 26 | 26 |
| Dimensions (H x W x D) | | in. | 22 ³ / ₈ X 31 ⁹ / ₃₂ X 11 ⁷ / ₃₂ | | |
| Net Weight | | lbs. | 99 | 99 | 99 |



ENERGY STAR® and the **ENERGY STAR** mark are registered trademarks owned by the U.S. Environmental Protection Agency. **ENERGY STAR** products are third-party certified by an EPA-recognized certification body. Products that earn the **ENERGY STAR** prevent greenhouse gas emissions by meeting strict energy efficiency guidelines set by the U.S. Environmental Protection Agency.

This product meets ENERGY STAR requirements when appropriate coil components are used. Ask your contractor for details.

MXL Series

Enhanced-Capacity Multi-Zone

OUTDOOR UNITS



| SYSTEM PERFORMANCE | | | |
|---|--------|--|--|
| Nominal Capacity | BTU/h | 18,000 | 24,000 |
| Cooling Capacity (Rated) | BTU/h | 18,000 | 24,000 |
| Cooling Capacity (Rated-Max) | BTU/h | 18,000 - 24,000 | 24,000 - 30,000 |
| Heating Capacity (Rated) | BTU/h | 18,900 | 24,000 |
| Heating Capacity (Rated-Max) | BTU/h | 18,900 - 36,000 | 24,000 - 41,000 |
| Heating Capacity (@ 5F - Max) | BTU/h | 18,900 | 21,600 |
| SEER / EER | | 17 / 12.7 | 17.9 / 12.7 |
| COP / HSPF | | 4.2 / 10.3 | 4.56 / 12.5 |
| ELECTRICAL DATA | | | |
| Power Supply | V/φ/Hz | 208-230/1/60 | 208-230/1/60 |
| Minimum Circuit Amps | A | 17.1 | 19.5 |
| Max Overcurrent Protection | A | 20 | 20 |
| Power Consumption - Cooling | kW | 1.42 | 1.89 |
| Power Consumption - Heating | kW | 1.32 | 1.54 |
| OUTDOOR UNITS | | | |
| Model Name | | 2MXL18QMVJU | 3MXL24QMVJU |
| Sound Pressure Level - Cooling/Heating | dB(A) | 50 / 51 | 52 / 54 |
| Operating Range - Cooling | FDB | 14 - 115 | 14 - 115 |
| Operating Range - Low Ambient Cooling | FDB | --- | --- |
| Operating Range - w/ wind baffle | FDB | --- | --- |
| Operating Range - Heating | FDB | 5-75 | 5-75 |
| Operating Range - w/ drain pan heater as applicable | FDB | -13-75 | -13-75 |
| Max Piping Length | ft | 164 | 230 |
| Max Piping Height | ft | 49% | 49% |
| Dimensions (HxWxD) | in. | 28 ¹⁵ / ₁₆ x 34 ³ / ₄ x 12 ⁵ / ₈ | 28 ¹⁵ / ₁₆ x 34 ³ / ₄ x 12 ⁵ / ₈ |
| Net Weight | lbs | 139 | 140 |

MXL Series

Multi-Zone Indoor Units



| INDOOR WALL-MOUNTED UNITS | | | | | | |
|-------------------------------------|------------------|-----|--|-----------------------|-----------------------|---|
| MODEL NAME | | | CTXS07LVJU | FTXS09LVJU | FTXS12LVJU | FTXS15LVJU |
| OUTDOOR UNIT COMPATIBILITY | | | 2MXL18QMVJU | 2MXL18QMVJU | 2MXL18QMVJU | 2MXL18QMVJU |
| | | | 3MXL24QMVJU | 3MXL24QMVJU | 3MXL24QMVJU | 3MXL24QMVJU |
| Airflow-Wet (H/M/L/SL) | CFM | | 332/ 261/ 194/ 145 | 381/ 279/ 194/ 145 | 403/ 307/ 205/ 155 | 568/ 477/ 385/ 360 |
| Airflow-Dry (H/M/L/SL) | CFM | | 350/ 290/ 233/ 219 | 420/ 321/ 233/ 219 | 438/ 335/ 240/ 212 | 593/ 505/ 417/ 371 |
| Sound Pressure - Cooling (H/M/L/SL) | dB(A) | | 38/ 32/ 25/ 22 | 41/ 33/ 25/ 22 | 45/ 37/ 29/ 23 | 45/ 40/ 35/ 32 |
| Sound Pressure - Heating (H/M/L/SL) | dB(A) | | 38/ 33/ 28/ 25 | 42/ 35/ 28/ 25 | 45/ 39/ 29/ 26 | 43/ 38/ 33/ 30 |
| Piping Connections | Liquid (O.D.) | in. | ø 1/4 | ø 1/4 | ø 1/4 | ø 1/4 |
| | Gas (O.D.) | in. | ø 3/8 | ø 3/8 | ø 3/8 | ø 1/2 |
| | Condensate Drain | in. | ø 5/8 | ø 5/8 | ø 5/8 | ø 5/8 |
| Dimensions (H x W x D) | in. | | 11 $\frac{1}{8}$ x 31 $\frac{1}{2}$ x 8 $\frac{7}{16}$ | | | 13 $\frac{3}{8}$ x 41 $\frac{1}{8}$ x 9 $\frac{3}{4}$ |
| Net Weight | lbs. | | 20 | 20 | 22 | 31 |



| INDOOR SLIM-DUCT UNITS | | | | | | |
|-------------------------------------|------------------|-----|---|--------------------|--------------------|---|
| MODEL NAME | | | FDXS09LVJU | FDXS12LVJU | CDXS15LVJU | CDXS18LVJU |
| OUTDOOR UNIT COMPATIBILITY | | | 2MXL18QMVJU | 2MXL18QMVJU | 2MXL18QMVJU | 2MXL18QMVJU |
| | | | 3MXL24QMVJU | 3MXL24QMVJU | 3MXL24QMVJU | 3MXL24QMVJU |
| External Static Pressure | "W.G. | | 0.12 | 0.12 | 0.16 | 0.16 |
| Airflow-Wet (H/M/L/SL) | CFM | | 305/ 280/ 260/ 235 | 305/ 280/ 260/ 235 | 424/ 388/ 353/ 297 | 424/ 388/ 353/ 297 |
| Airflow-Dry (H/M/L/SL) | CFM | | 305/ 280/ 260/ 235 | 305/ 280/ 260/ 235 | 424/ 388/ 353/ 297 | 424/ 388/ 353/ 297 |
| Sound Pressure - Cooling (H/M/L/SL) | dB(A) | | 35/ 33/ 31/ - | 35/ 33/ 31/ - | 37/ 35/ 33/ 31 | 37/ 35/ 33/ 31 |
| Sound Pressure - Heating (H/M/L/SL) | dB(A) | | 35/ 33/ 31/ - | 35/ 33/ 31/ - | 37/ 35/ 33/ 31 | 37/ 35/ 33/ 31 |
| Piping Connections | Liquid (O.D.) | in. | ø 1/4 | ø 1/4 | ø 1/4 | ø 1/4 |
| | Gas (O.D.) | in. | ø 3/8 | ø 3/8 | ø 1/2 | ø 1/2 |
| | Condensate Drain | in. | ø 25/32 | ø 25/32 | ø 25/32 | ø 25/32 |
| Dimensions (H x W x D) | in. | | 7 $\frac{7}{8}$ x 27 $\frac{9}{16}$ x 24 $\frac{7}{16}$ | | | 7 $\frac{7}{8}$ x 35 $\frac{7}{16}$ x 24 $\frac{7}{16}$ |

Multi-Zone Indoor Units



| INDOOR 2'x2' CEILING CASSETTE UNITS | | | | | |
|-------------------------------------|------------------|----------------------------|----------------------------|----------------------------|--------------|
| MODEL NAME | | FFQ09LVJU | FFQ12LVJU | FFQ15LVJU | FFQ18LVJU |
| OUTDOOR UNIT COMPATIBILITY | | 2MXL18QMVJU 3MXL24QMVJU | 2MXL18QMVJU 3MXL24QMVJU | 2MXL18QMVJU 3MXL24QMVJU | 3MXL24QMVJU |
| Cooling Capacity (Nominal) | BTU/h | 9,500 | 12,000 | 15,000 | 18,000 |
| Heating Capacity (Nominal) | BTU/h | 11,100 | 14,000 | 17,500 | 21,000 |
| Power Supply | V/Ph/Hz | 208-230/1/60 | 208-230/1/60 | 208-230/1/60 | 208-230/1/60 |
| Airflow Rate (H/L) | CFM | 318/ 230 | 353/ 230 | 424/ 283 | 530/ 353 |
| Sound Pressure - Cooling (H/L) | dB(A) | 36/ 29 | 38/ 29 | 42/ 31 | 46/ 37 |
| Sound Pressure - Heating (H/L) | dB(A) | 36/ 29 | 38/ 29 | 42/ 31 | 46/ 37 |
| Piping Connections | Liquid (O.D.) | in. Ø 1/4 | Ø 1/4 | Ø 1/4 | Ø 1/4 |
| | Gas (O.D.) | in. Ø 3/8 | Ø 3/8 | Ø 1/2 | Ø 1/2 |
| | Condensate Drain | in. Ø 1-1/32 | Ø 1-1/32 | Ø 1-1/32 | Ø 1-1/32 |
| Dimensions – Unit (H x W x D) | in. | 11¼ x 22½ x 22½ | | 11¼ x 22½ x 22½ | |
| Dimensions – Deco Panel (H x W x D) | in. | 2¼ x 27½ x 27½ | | 2¼ x 27½ x 27½ | |
| Net Weight | lbs. | 38.5 | 38.5 | 38.5 | 38.5 |



| INDOOR FLOOR-STANDING UNITS | | | | | |
|-------------------------------|---------------|----------------------------|----------------------------|----------------------------|----------------|
| MODEL NAME | | FVXS09NVJU | FVXS12NVJU | FVXS15NVJU | FVXS18NVJU |
| OUTDOOR UNIT COMPATIBILITY | | 2MXL18QMVJU 3MXL24QMVJU | 2MXL18QMVJU 3MXL24QMVJU | 2MXL18QMVJU 3MXL24QMVJU | 3MXL24QMVJU |
| Airflow Rate Cooling | CFM | 290 | 300 | 378 | 378 |
| Airflow Rate Heating | CFM | 311 | 332 | 417 | 417 |
| Power Supply | V/Ph/Hz | 208-230/ 1/ 60 | 208-230/ 1/ 60 | 208-230/ 1/ 60 | 208-230/ 1/ 60 |
| Sound Pressure - Cooling | dB(A) | 38/ 32/ 26/ 23 | 39/ 33/ 27/ 24 | 44/ 40/ 36/ 32 | 44/ 40/ 36/ 32 |
| Sound Pressure - Heating | dB(A) | 38/ 32/ 26/ 23 | 39/ 33/ 27/ 24 | 44/ 40/ 36/ 32 | 44/ 40/ 36/ 32 |
| Piping Connections | Liquid (O.D.) | in. Ø 1/4 | Ø 1/4 | Ø 1/4 | Ø 1/4 |
| | Gas (O.D.) | in. Ø 3/8 | Ø 3/8 | Ø 1/2 | Ø 1/2 |
| Dimensions – Unit (H x W x D) | in. | 23½ x 27½ x 8¼ | | | |
| Net Weight | lbs. | 31 | 31 | 31 | 31 |

MXS Series

Multi-Zone Units

OUTDOOR UNITS



| SYSTEM PERFORMANCE | | | | | |
|---|-------------|-------------------------------|----------------|----------------|--|
| MODEL NAME | | 2MXS18NMVJU | 3MXS24NMVJU | 4MXS36NMVJU | RMXS48LVJU |
| Cooling Capacity (Rated - Max) | BTU/h | 18,000–21,000 | 24,000–30,000 | 36,000–38,000 | 48,000 |
| Heating Capacity (Rated - Max) | BTU/h | 18,900–25,000 | 24,000–36,000 | 36,000–43,000 | 54,000 |
| Max Connected Capacity | BTU/h | 24,000 | 39,000 | 48,000 | 62,400 |
| Min-Max No. of Indoor Units | Connections | 2 | 2–3 | 2–4 | 2–8 |
| Sound Pressure - (Cooling/Heating) | dB(A) | 50/ 51 | 52/ 54 | 52/ 54 | 57/ 58 |
| Operating Range - Cooling | °F DB | 14° –115° | 14° –115° | 14° –115° | 14° –115° |
| Operating Range - Heating | °F DB | 5° – 75° | 5° – 75° | 5° – 75° | 5° – 75° |
| Operating Range - Heating with Drain Pan Heater as applicable | °F DB | -4° – 75° | -4° – 75° | -4° – 75° | -4° – 75° |
| PIPING DIMENSIONS | | | | | |
| Max. Length (for Total of All Rooms) | ft. | 164 | 230 | 230 | 433 |
| Max. Length (for One Room) | ft. | Refer to Installation Manual. | | | |
| Max. Piping Height | ft. | 49.2 | 49.2 | 49.2 | 98.4 |
| ELECTRICAL DATA | | | | | |
| Power Supply | V/Ph/Hz | 208-230/1/60 | 208-230/1/60 | 208-230/1/60 | 208-230/1/60 |
| Minimum Circuit Amps | A | 15.8 | 18.7 | 19.8 | 27 |
| Maximum Overcurrent Protection | A | 20 | 20 | 20 | 30 |
| Dimensions (H x W x D) | in. | 29 x 34¼ X 12½ | 29 x 34¼ X 12½ | 29 x 34¼ X 12½ | 52 ¹⁵ / ₁₆ X 35 ⁷ / ₁₆ X 12½ |
| Net Weight | lbs. | 128 | 132 | 137 | 129 |
| SEER/ EER | Non-Ducted | 18.9/ 12.5 | 17.9/ 12.7 | 17.7/ 9.2 | 18.8/ 10.3 |
| | Mixed | 16.5/ 11.0 | 15.9/ 11.2 | 15.9/ 8.5 | 16.5/ 9.8 |
| | Ducted | 14.0/ 9.5 | 14.0/ 9.7 | 14.0/ 7.9 | 14.1/ 9.3 |
| HSPF/ COP | Non-Ducted | 10.7/ 4.1 | 12.5/ 4.6 | 12.2/ 4.5 | 11.3/ 3.0 |
| | Mixed | 9.5/ 4.1 | 10.4/ 3.2 | 10.2/ 3.4 | 10.5/ 2.9 |
| | Ducted | 8.2/ 4.1 | 8.2/ 3.9 | 8.2/ 3.9 | 9.6/ 2.7 |

MXS Series

Multi-Zone Indoor Units



| INDOOR WALL-MOUNTED UNITS: CTXS_LVJU, AND FTXS_LVJU | | | | | | | | |
|---|-------------------------|-------|--|--|--------------------|--------------------|--------------------|--------------------|
| MODEL NAME | | | CTXS07LVJU | FTXS09LVJU | FTXS12LVJU | FTXS15LVJU | FTXS18LVJU | FTXS24LVJU |
| OUTDOOR UNIT COMPATIBILITY | | | 2MXS18NMVJU | 2MXS18NMVJU | 2MXS18NMVJU | 2MXS18NMVJU | 3MXS24NMVJU | 4MXS36NMVJU |
| | | | 3MXS24NMVJU | 3MXS24NMVJU | 3MXS24NMVJU | 3MXS24NMVJU | 4MXS36NMVJU | 4MXS36NMVJU |
| | | | 4MXS36NMVJU | 4MXS36NMVJU | 4MXS36NMVJU | 4MXS36NMVJU | RMXS48LVJU | RMXS48LVJU |
| | | | RMXS48LVJU | RMXS48LVJU | RMXS48LVJU | RMXS48LVJU | | |
| Airflow-Wet (H/M/L/SL) | | CFM | 332/261/194/145 | 381/ 279/ 194/ 145 | 403/ 307/ 205/ 155 | 568/ 477/ 385/ 360 | 583/ 484/ 385/ 360 | 643/ 494/ 350/ 328 |
| Airflow-Dry (H/M/L/SL) | | CFM | 350/290/233/219 | 420/ 321/ 233/ 219 | 438/ 335/ 240/ 212 | 593/ 505/ 417/ 371 | 625/ 526/ 431/ 399 | 699/ 572/ 445/ 403 |
| Sound Pressure - Cooling (H/M/L/SL) | | dB(A) | 38/32/25/22 | 41/ 33/ 25/ 22 | 45/ 37/ 29/ 23 | 45/ 40/ 35/ 32 | 46/ 41/ 36/ 33 | 51/ 44/ 37/ 34 |
| Sound Pressure - Heating (H/M/L/SL) | | dB(A) | 38/33/28/25 | 42/ 35/ 28/ 25 | 45/ 39/ 29/ 26 | 43/ 38/ 33/ 30 | 45/ 40/ 35/ 32 | 48/ 42/ 37/ 34 |
| Piping Connections | Liquid (O.D.) | in. | Ø 1/4 | Ø 1/4 | Ø 1/4 | Ø 1/4 | Ø 1/4 | Ø 1/4 |
| | Gas (O.D.) | in. | Ø ¾ | Ø ¾ | Ø ¾ | Ø 1/2 | Ø 1/2 | Ø 5/8 |
| | Condensate Drain (O.D.) | in. | Ø 5/8 | Ø 5/8 | Ø 5/8 | Ø 5/8 | Ø 5/8 | Ø 5/8 |
| Dimensions (H x W x D) | | in. | 11½ X 31½ X 8 ⁷ / ₁₆ | 11½ X 31½ X 8 ⁷ / ₁₆ | | 13½ X 41¼ X 9¾ | | |
| Net Weight | | lbs. | 20 | 20 | 22 | 31 | 31 | 31 |



| INDOOR SLIM DUCT UNITS: FDXS_LVJU AND CDXS_LVJU | | | | | | | |
|---|------------------|-------|--|--------------------|--------------------|--|--------------------|
| MODEL NAME | | | FDXS09LVJU | FDXS12LVJU | CDXS15LVJU | CDXS18LVJU | CDXS24LVJU |
| OUTDOOR UNIT COMPATIBILITY | | | 2MXS18NMVJU | 2MXS18NMVJU | 2MXS18NMVJU | 3MXS24NMVJU | 4MXS36NMVJU |
| | | | 3MXS24NMVJU | 3MXS24NMVJU | 3MXS24NMVJU | 4MXS36NMVJU | 4MXS36NMVJU |
| | | | 4MXS36NMVJU | 4MXS36NMVJU | 4MXS36NMVJU | RMXS48LVJU | RMXS48LVJU |
| | | | RMXS48LVJU | RMXS48LVJU | RMXS48LVJU | | |
| External Static Pressure | | "W.G. | 0.12 | 0.12 | 0.16 | 0.16 | 0.16 |
| Airflow-Wet (H/M/L/SL) | | CFM | 305/ 280/ 260/ 235 | 305/ 280/ 260/ 235 | 424/ 388/ 353/ 297 | 424/ 388/ 353/ 297 | 424/ 388/ 353/ 297 |
| Airflow-Dry (H/M/L/SL) | | CFM | 305/ 280/ 260/ 235 | 305/ 280/ 260/ 235 | 424/ 388/ 353/ 297 | 424/ 388/ 353/ 297 | 424/ 388/ 353/ 297 |
| Sound Pressure - Cooling (H/M/L/SL) | | dB(A) | 35/ 33/ 31/ - | 35/ 33/ 31/ - | 37/ 35/ 33/ 31 | 37/ 35/ 33/ 31 | 37/ 35/ 33/ 31 |
| Sound Pressure - Heating (H/M/L/SL) | | dB(A) | 35/ 33/ 31/ - | 35/ 33/ 31/ - | 37/ 35/ 33/ 31 | 37/ 35/ 33/ 31 | 37/ 35/ 33/ 31 |
| Piping Connections | Liquid (O.D.) | in. | Ø 1/4 | Ø 1/4 | Ø 1/4 | Ø 1/4 | Ø 1/4 |
| | Gas (O.D.) | in. | Ø ¾ | Ø ¾ | Ø 1/2 | Ø 1/2 | Ø 5/8 |
| | Condensate Drain | in. | Ø 25/32 | Ø 25/32 | Ø 25/32 | Ø 25/32 | Ø 25/32 |
| Dimensions (H x W x D) | | in. | 7¾ X 27 ⁹ / ₁₆ X 24 ⁷ / ₁₆ | | | 7¾ X 35 ⁷ / ₁₆ X 24 ⁷ / ₁₆ | |

MXS Series

Multi-Zone Indoor Units



| INDOOR 2'X2' CEILING CASSETTE UNITS: FFQ_LVJU | | | | | |
|---|-------------------------|---|---|---|--|
| MODEL NAME | | FFQ09LVJU | FFQ12LVJU | FFQ15LVJU | FFQ18LVJU |
| Outdoor Unit Compatibility | | 2MXS18NMVJU 3MXS24NMVJU 4MXS36NMVJU RMXS48LVJU | 2MXS18NMVJU 3MXS24NMVJU 4MXS36NMVJU RMXS48LVJU | 2MXS18NMVJU 3MXS24NMVJU 4MXS36NMVJU RMXS48LVJU | 3MXS24NMVJU 4MXS36NMVJU RMXS48LVJU |
| Cooling Capacity (Nominal) | BTU/h | 9,500 | 12,000 | 15,000 | 18,000 |
| Heating Capacity (Nominal) | BTU/h | 11,100 | 14,000 | 17,500 | 21,000 |
| Power Supply | V/Ph/Hz | 208-230/1/60 | 208-230/1/60 | 208-230/1/60 | 208-230/1/60 |
| Airflow Rate (H/L) | CFM | 318/ 230 | 353/ 230 | 424/ 283 | 530/ 353 |
| Sound Pressure - Cooling (H/L) | dB(A) | 36/ 29 | 38/ 29 | 42/ 31 | 46/ 37 |
| Sound Pressure - Heating (H/L) | dB(A) | 36/ 29 | 38/ 29 | 42/ 31 | 46/ 37 |
| Piping Connections | Liquid (O.D.) | in. Ø 1/4 | Ø 1/4 | Ø 1/4 | Ø 1/4 |
| | Gas (O.D.) | in. Ø 3/8 | Ø 3/8 | Ø 1/2 | Ø 1/2 |
| | Condensate Drain (O.D.) | in. Ø 1-1/32 | Ø 1-1/32 | Ø 1-1/32 | Ø 1-1/32 |
| Dimensions - Unit (H x W x D) | | in. 11¼ X 22½ X 22½ | 11¼ X 22½ X 22½ | | |
| Dimensions - Deco Panel (H x W x D) | | in. 2¼ X 27½ X 27½ | 2¼ X 27½ X 27½ | | |
| Net Weight | | lbs. 38.5 | 38.5 | 38.5 | 38.5 |



| INDOOR FLOOR-STANDING UNITS: FVXS_NVJU | | | | | |
|--|---------------|---|---|--|--|
| MODEL NAME | | FVXS09NVJU | FVXS12NVJU | FVXS18NVJU | |
| Outdoor Unit Compatibility | | 2MXS18NMVJU 3MXS24NMVJU 4MXS36NMVJU RMXS48LVJU | 2MXS18NMVJU 3MXS24NMVJU 4MXS36NMVJU RMXS48LVJU | 3MXS24NMVJU 4MXS36NMVJU RMXS48LVJU | |
| Air Flow Rate Cooling | CFM | 290 | 300 | 378 | |
| Air Flow Rate Heating | CFM | 311 | 332 | 417 | |
| Power Supply | V/Ph/Hz | 208-230/1/60 | 208-230/1/60 | 208-230/1/60 | |
| Sound Pressure - Cooling | dB(A) | 38/ 32/ 26/ 23 | 39/ 33/ 27/ 24 | 44/ 40/ 36/ 32 | |
| Sound Pressure - Heating | dB(A) | 38/ 32/ 26/ 23 | 39/ 33/ 27/ 24 | 44/ 40/ 36/ 32 | |
| Piping Connections | Liquid (O.D.) | in. Ø 1/4 | Ø 1/4 | Ø 1/4 | |
| | Gas (O.D.) | in. Ø 3/8 | Ø 3/8 | Ø 1/2 | |
| Dimensions - Unit (H x W x D) | | in. 23¾ X 27½ X 8¼ | 23¾ X 27½ X 8¼ | 23¾ X 27½ X 8¼ | |
| Net Weight | | lbs. 31 | 31 | 31 | |

SkyAir

Outdoor Units

SkyAir is the ultimate ducted and duct-free solution for light commercial and residential whole-house applications. Ranging from 18,000 BTU/h to 42,000 BTU/h, these innovative systems provide energy efficiency, technological reliability, and installation flexibility.

- DC fan motor improves efficiency compared to conventional AC motors.
- Aero spiral fan and grill minimizes turbulence and increases sound reduction.
- Reluctance brushless DC compressor
- Long piping lengths up to 230 ft. allow layout flexibility
- Swing compressor with friction reduction and quieter rotation or scroll compressor with robust and low sound design provides maximum durability.
- Anti-corrosion treatment on the outdoor heat exchanger



Indoor Units



| FAQ WALL-MOUNT | 1.5 TONS | 2.0 TONS |
|---|---------------------|-------------------|
| INDOOR MODEL # | FAQ18PVJU | FAQ24PVJU |
| OUTDOOR MODEL # (COOLING ONLY) | RZR18PVJU | RZR24PVJU |
| OUTDOOR MODEL # HEAT PUMP | RZQ18PVJU9 | RZQ24PVJU9 |
| Cooling Capacity (Rated) (BTU/h) | 18,000 | 24,000 |
| Heating Capacity (Rated) (BTU/h) [†] | 20,000 | 26,000 |
| SEER / HSPF | 18.6 / 8.7 | 17.6 / 9.1 |
| EER | 12.7 | 10.2 |
| Power Supply (Voltage-Phase-Hz) | 208/230V-1-60 | 208/230V-1-60 |
| Liquid Piping Connections (O.D.) (in.) | Ø 3/8 | Ø 3/8 |
| Gas Piping Connections (O.D.) (in.) | Ø 5/8 | Ø 5/8 |
| Condensate Drain (in.) | Ø 11/16 | Ø 11/16 |
| Dimensions (H" x W" x D") | 11 3/8 X 41 3/8 X 9 | |
| Net Weight | 31 | 31 |
| Max. Piping Length (ft.) | 164 | 164 |
| Max. Piping Height (ft.) | 98 | 98 |

[†] Applicable to heat pump models only



| FTXS WALL-MOUNT | 2.5 TONS | 3.0 TONS |
|---|--------------------------|--------------------------|
| INDOOR MODEL # | FTXS30LVJU | FTXS36LVJU |
| OUTDOOR MODEL # COOLING ONLY | RKS30LVJU | RKS36LVJU |
| OUTDOOR MODEL # HEAT PUMP | RXS30LVJU | RXS36LVJU |
| Cooling Capacity (Rated) (BTU/h) | 30,000 | 36,000 |
| Cooling Capacity (Min–Max) (BTU/h) | 10,200–30,000 | 10,200–36,000 |
| Heating Capacity (Rated) (BTU/h) [†] | 34,800 | 38,000 |
| Heating Capacity (Min–Max) (BTU/h) [†] | 10,200–34,000 | 10,200–38,000 |
| SEER / HSPF | 19.3 / 8.3 | 17.9 / 8.3 |
| EER | 10.71 | 8.37 |
| Minimum Circuit Amps | 19.5 | 19.5 |
| Maximum Overcurrent Protection (A) | 20.0 | 20.0 |
| Liquid Piping Connections (O.D.) (in.) | Ø 3/8 | Ø 3/8 |
| Gas Piping Connections (O.D.) (in.) | Ø 5/8 | Ø 5/8 |
| Condensate Drain (in.) | Ø 5/8 | Ø 5/8 |
| Dimensions (H" x W" x D") | 13 3/8 X 47 3/4 X 9 7/16 | 13 3/8 X 47 3/4 X 9 7/16 |
| Max. Piping Length (ft.) | 98.4 | 98.4 |
| Max. Piping Height (ft.) | 65.6 | 65.6 |

[†] Applicable to heat pump models only

Indoor Units



| FBQ DC DUCTED | 1.5 TONS | 2.0 TONS | 2.5. TONS | 3.0 TONS | 3.5 TONS |
|--|-----------------------------|-------------------|------------------|-----------------------------|-------------------|
| INDOOR MODEL # | FBQ18PVJU | FBQ24PVJU | FBQ30PVJU | FBQ36PVJU | FBQ42PVJU |
| OUTDOOR MODEL # COOLING ONLY | RZR18PVJU | RZR24PVJU | RZR30PVJU | RZR36PVJU | RZR42PVJU |
| OUTDOOR MODEL # HEAT PUMP | RZQ18PVJU9 | RZQ24PVJU9 | RZQ30PVJU | RZQ36PVJU9 | RZQ42PVJU9 |
| Cooling Capacity (Nominal) (BTU/h) | 18,000 | 24,000 | 30,000 | 36,000 | 42,000 |
| Heating Capacity (Nominal) (BTU/h) | 20,000 | 27,000 | 34,000 | 40,000 | 47,000 |
| SEER / HSPF † | 17.5 / 10.6 | 16.5 / 10.5 | 16.0 / 9.2 | 17.5 / 9.1 | 16.0 / 8.8 |
| EER | 14.1 | 12.0 | 10.5 | 11.2 | 10.2 |
| Power Supply (Voltage-Phase-Hz) | 208/230V-1-60 | 208/230V-1-60 | 208/230V-1-60 | 208/230V-1-60 | 208/230V-1-60 |
| External Static Pressure ("W.G) | Standard 0.40 (0.80 - 0.20) | | | | |
| Liquid Piping Connections (O.D.) (in.) | Ø 1/4 | Ø 3/8 | Ø 3/8 | Ø 3/8 | Ø 3/8 |
| Gas Piping Connections (O.D.) (in.) | Ø 1/2 | Ø 5/8 | Ø 5/8 | Ø 5/8 | Ø 5/8 |
| Condensate Drain (in.) | Ø 1-1/4 | Ø 1-1/4 | Ø 1-1/4 | Ø 1-1/4 | Ø 1-1/4 |
| Dimensions (H" x W" x D") | 11 1/8 X 41 3/8 X 9 | | | 11 13/16 X 55 7/8 X 27 9/16 | |
| Max. Piping Length (ft.) | 164 | 164 | 164 | 230 | 230 |
| Max. Piping Height (ft.) | 98 | 98 | 98 | 164 | 164 |

† Applicable to heat pump models only



| FCQ ROUND-FLOW CASSETTE | 1.5 TONS | 2.0 TONS | 2.5. TONS | 3.0 TONS | 3.5 TONS |
|--|----------------------------|-------------------|-------------------|-----------------------------|-------------------|
| INDOOR MODEL # | FCQ18PAVJU | FCQ24PAVJU | FCQ30PAVJU | FCQ36PAVJU | FCQ42PAVJU |
| OUTDOOR MODEL # COOLING ONLY | RZR18PVJU | RZR24PVJU | RZR30PVJU | RZR36PVJU | RZR42PVJU |
| OUTDOOR MODEL # HEAT PUMP | RZQ18PVJU9 | RZQ24PVJU9 | RZQ30PVJU | RZQ36PVJU9 | RZQ42PVJU9 |
| Cooling Capacity (Rated) (BTU/h) | 18,000 | 24,000 | 30,000 | 36,000 | 42,000 |
| Heating Capacity (Rated) (BTU/h) † | 20,000 | 27,000 | 34,000 | 40,000 | 47,000 |
| SEER / HSPF † | 17.2 / 10.1 | 16.8 / 9.7 | 15.8 / 9.7 | 17.5 / 8.4 | 16.0 / 8.5 |
| EER | 13.9 | 12.0 | 10.2 | 11.2 | 10.2 |
| Power Supply (Voltage-Phase-Hz) | 208/230V-1-60 | 208/230V-1-60 | 208/230V-1-60 | 208/230V-1-60 | 208/230V-1-60 |
| Liquid Piping Connections (O.D.) (in.) | Ø 1/4 ** | Ø 3/8 | Ø 3/8 | Ø 3/8 | Ø 3/8 |
| Gas Piping Connections (O.D.) (in.) | Ø 1/2 ** | Ø 3/8 | Ø 3/8 | Ø 3/8 | Ø 3/8 |
| Condensate Drain (in.) | Ø 1 1/4 | Ø 1 1/4 | Ø 1 1/4 | Ø 1 1/4 | Ø 1 1/4 |
| Dimensions (H" x W" x D") | 30 5/16 X 35 7/16 X 12 3/8 | | | 52 15/16 X 35 7/16 X 12 3/8 | |
| Max. Piping Length (ft.) | 164 | 164 | 164 | 230 | 230 |
| Max. Piping Height (ft.) | 98 | 98 | 98 | 164 | 164 |

† Applicable to heat pump models only

** Use a 3/8" X 3/8" Line set and reduce at the indoor unit connections. Refer to Technical Bulletin #OULr13

Indoor Units



| FHQ CEILING-SUSPENDED | 1.5 TONS | 2.0 TONS | 2.5. TONS | 3.0 TONS | 3.5 TONS |
|--|---|-------------------|------------------|-------------------|-------------------|
| INDOOR MODEL # | FHQ18PVJU | FHQ24PVJU | FHQ30PVJU | FHQ36MVJU | FHQ42MVJU |
| OUTDOOR MODEL # COOLING ONLY | RZR18PVJU | RZR24PVJU | RZR30PVJU | RZR36PVJU | RZR42PVJU |
| OUTDOOR MODEL # HEAT PUMP | RZQ18PVJU9 | RZQ24PVJU9 | RZQ30PVJU | RZQ36PVJU9 | RZQ42PVJU9 |
| Cooling Capacity (Rated) (BTU/h) | 18,000 | 24,000 | 30,000 | 36,000 | 40,500 |
| Heating Capacity (Rated) (BTU/h) † | 20,000 | 27,000 | 34,000 | 37,500 | 39,500 |
| SEER / HSPF † | 18.0 / 11.1 | 18.1 / 11.1 | 18.1 / 10.0 | 17.2 / 8.4 | 13.8 / 8.2 |
| EER | 14.0 | 12.6 | 10.5 | 10.2 | 9.5 |
| Power Supply (Voltage-Phase-Hz) | 208/230V-1-60 | 208/230V-1-60 | 208/230V-1-60 | 208/230V-1-60 | 208/230V-1-60 |
| Liquid Piping Connections (O.D.) (in.) | Ø ¾ | Ø ¾ | Ø ¾ | Ø ¾ | Ø ¾ |
| Gas Piping Connections (O.D.) (in.) | Ø 5/8 | Ø 5/8 | Ø 5/8 | Ø 5/8 | Ø 5/8 |
| Condensate Drain (in.) | Ø 1 | Ø 1 | Ø 1 | Ø 1 | Ø 1 |
| Dimensions (H" x W" x D") | 7 ¹¹ / ₁₆ X 62 ³ / ₈ X 26 ³ / ₈ | | | | |
| Max. Piping Length (ft.) | 164 | 164 | 164 | 230 | 230 |
| Max. Piping Height (ft.) | 98 | 98 | 98 | 164 | 164 |

† Applicable to heat pump models only



| FTQ AIR HANDLER | 1.5 TONS | 2.0 TONS | 2.5. TONS | 3.0 TONS | 3.5 TONS |
|--|--|-------------------|-------------------|--|-------------------|
| INDOOR MODEL # | FTQ18PBVJU | FTQ24PBVJU | FTQ30PBVJU | FTQ36PBVJU | FTQ42PBVJU |
| OUTDOOR MODEL # | RZQ18PVJU9 | RZQ24PVJU9 | RZQ30PVJU9 | RZQ36PVJU9 | RZQ42PVJU9 |
| Cooling Capacity (Rated) (BTU/h) | 18,000 | 24,000 | 30,000 | 36,000 | 40,000 |
| Cooling Capacity (Min–Max) (BTU/h) | 9,000–18,000 | 9,000–24,000 | 12,000–30,000 | 12,000–36,000 | 12,000–42,000 |
| Heating Capacity (Rated) (BTU/h) † | 20,000 | 27,000 | 34,000 | 40,000 | 47,000 |
| Heating Capacity (Min–Max) (BTU/h) † | 9,000–20,000 | 9,000–27,000 | 12,000–34,000 | 12,000–40,000 | 12,000–47,000 |
| SEER / HSPF † | 20.0 / 12.0 | 19.0 / 11.5 | 19.5 / 10.0 | 18.0 / 9.5 | 17.0 / 9.0 |
| COP / EER | 4.0 / 14.5 | 3.8 / 13.5 | 3.7 / 19.5 | 3.6 / 12.5 | 3.2 / 12.0 |
| Power Supply (Voltage-Phase-Hz) | 208/230V-1-60 | 208/230V-1-60 | 208/230V-1-60 | 208/230V-1-60 | 208/230V-1-60 |
| External Static Pressure ("W.G.) | Up to 0.50 | Up to 0.50 | Up to 0.50 | Up to 0.50 | Up to 0.50 |
| Liquid Piping Connections (O.D.) (in.) | Ø ¾ | Ø ¾ | Ø ¾ | Ø ¾ | Ø ¾ |
| Gas Piping Connections (O.D.) (in.) | Ø 5/8 | Ø 5/8 | Ø 5/8 | Ø 5/8 | Ø 5/8 |
| Condensate Drain (in.) | Ø 1 | Ø 1 | Ø 1 | Ø 1 | Ø 1 |
| Dimensions (H" x W" x D") | 48 ³ / ₈ x 22 x 26 | | | 58 ³ / ₈ x 22 x 26 | |
| Max. Piping Length (ft.) | 98.0 | 98.0 | 98.0 | 230.0 | 230.0 |
| Max. Piping Height (ft.) | 98.0 | 98.0 | 98.0 | 164.0 | 164.0 |

† Applicable to heat pump models only

Ductless Systems

Accessories

| ITEM # | ITEM DESCRIPTION |
|---|--|
| CONTROLLER OPTIONS | |
| BRC7E830 | Wireless Remote Control Kit |
| BRC944B2-A08 | Wired Remote Controller - Kit Reference - see next 3 items |
| BRC944B2 | Wired Controller - Part 1 of BRC944B2-A08 Kit |
| BRCW901A08 | Wired Controller Cord - Part 2 of BRC944B2-A08 Kit |
| KRP980B1 | Interface Adapter for BRC944B2-A08 Kit - Part 3 (Required for the 09.12 KEVJU) |
| BRCW901A03 | Wired Controller Cord - 10 ft. |
| KRP067A41 | Interface Adapter for BRC944B2 (Required for 09 and 12 size of 15 and 19 Series models) |
| KRP980B2 | Interface Adapter for BRC944B2 (Required for 18 and 24 sizes of 15 and 19 Series models) |
| DACA- BRCW901P10 | Remote Controller Cable, Plenum Rated, 10 ft. |
| DACA- BRCW901P25 | Remote Controller Cable, Plenum Rated, 25 ft. |
| DACA-TS1-1 | Daikin ENVi Intelligent Thermostat Kit |
| DRAIN PAN HEATERS | |
| KEHO67A41E | Heater for sizes 09 & 12 |
| KEHO63A4E | Heater for sizes 15 & 18 plus 2-, 3-, & 4-port multi systems |
| FILTER REPLACEMENTS | |
| KAF918A44 | Air-purifying filter without frame |
| KAF952B42 | Air-purifying filter without frame |
| KAF974B42S | Air-purifying filter |
| KAF970A45 | Air-purifying filter (15 and 19 Series models) |
| KAF970A46 | Air-purifying filter (15 and 19 Series models) |
| KAF968B42 | Air-purifying filter (FVX floor-standing model) |
| MINI-SPLIT PADS - PLASTIC PAD | |
| EL1838-3 | Elite Plastic Pad 18 x 38 x 3 |
| EL2436-3 | Elite Plastic Pad 24 x 36 x 3 |
| MINI-SPLIT PADS - ULTRALITE - CONCRETE BASED PAD | |
| UC1636-2 | Ultralite Pad 16 x 36 x 2 |
| UC2436-2 | Ultralite Pad 24 x 36 x 2 |
| UC2436-3 | Ultralite Pad 16 x 36 x 3 |
| UC2436-3 | Ultralite Pad 24 x 36 x 3 |
| MINI-SPLIT PADS - FLORIDA MARKET | |
| H1840-4 | N FL Hurricane Pad 18 x 40 x 4 - 150 MPH Zone |
| H2436-4 | N FL Hurricane Pad 24 x 36 x 4 - 150 MPH Zone |
| HT1840-4 | S FL Hurricane Pad 18 x 40 x 4 - 175 MPH Zone |
| HT2436-4 | S FL Hurricane Pad 24 x 36 x 4 - 175 MPH Zone |

| ITEM # | ITEM DESCRIPTION |
|---|--|
| SNOW HOODS | |
| KPS067A41 / KPS063A41 | Side hood for sizes RXL09 & 12 / RXL15 plus 2MXL18 & 3MXL24 |
| KPS067A42 / KPS063A44 | Back hood for sizes 09 & 12 / 15 |
| KPS067A44 / KPS063A47 | Discharge hood for sizes 09 & 12 / 15 |
| WALL-MOUNT BRACKETS | |
| DACA-WB-4 | Wall Condenser Bracket, Powder coat, 300l b. Capacity — WBB300 - 87738 |
| DACA-WB-3 | Wall Condenser Bracket, Powder coat, 500 lb. Capacity — WBB500 - 87735 |
| DACA-WB-2 | Wall Brackets Kit w/o Bar - 23½ X 16½ - 330 lb. cap — Sau |
| DACA-WB-1 | Adj Wall Bracket w/Support Bar - 17¼ X 16½ X 31½ — 242 lb. cap - Sau |
| LINESETS - NON-FLARED - WHITE PE STYLE RUGGED LINEHIDE - PDM | |
| DCTLS14121225 | LINESET GEL NF ¼ X ½ X ½, 25ft - NF - White Hide (Replaces LS14121210DMSF, LS14121215DMSF) New |
| DCTLS14121235 | LINESET GEL NF ¼ X ½ X ½, 35ft - NF - White Hide (Replaces LS14121230DMSF) New |
| DCTLS14121250 | LINESET GEL NF ¼ X ½ X ½, 50ft - NF - White Hide (Replaces LS14121250DMSF, LS14121265DMSF, LS141212100DMSF) New |
| DCTLS14381225 | LINESET GEL NF ¼ X ¾ X ½, 25ft - NF - White Hide |
| DCTLS14381235 | LINESET GEL NF ¼ X ¾ X ½, 35ft - NF - White Hide |
| DCTLS14381250 | LINESET GEL NF ¼ X ¾ X ½, 25ft - NF - White Hide |
| DCTLS14581225 | LINESET GEL NF ¼ X ¾ X ½, 25ft - NF - White Hide |
| DCTLS14581235 | LINESET GEL NF ¼ X ¾ X ½, 35ft - NF - White Hide |
| DCTLS14581250 | LINESET GEL NF ¼ X ¾ X ½, 50ft - NF - White Hide |
| DCTLS38581225 | LINESET GEL NF ¾ X ¾ X ½, 25ft - NF - White Hide |
| DCTLS38581235 | LINESET GEL NF ¾ X ¾ X ½, 35ft - NF - White Hide |
| DCTLS38581250 | LINESET GEL NF ¾ X ¾ X ½, 50ft - NF - White Hide |
| LINESETS - FLARED - BLACK RUBBER - JMF | |
| LS14381230DMSF | LS ¼ x ¾ x ½ x 30 DMS Flared- Black Rubber Insulation |
| LS14381250DMSF | LS ¼ x ¾ x ½ x 50 DMS Flared - Black Rubber Insulation |
| LS14121230DMSF | LS ¼ x ½ x ½ x 30 DMS Flared - Black Rubber Insulation |
| LS14121250DMSF | LS ¼ x ½ x ½ x 50 DMS Flared - Black Rubber Insulation |
| LS14121265DMSF | LS ¼ x ½ x ½ x 65 DMS Flared- Black Rubber Insulation |
| LS14381265DMSF | LS ¼ x ¾ x ½ x 65 DMS Flared- Black Rubber Insulation |
| LS14581265DMSF | LS ¼ x ¾ x ½ x 65 DMS Flared- Black Rubber Insulation |
| LS38581265DMSF | LS ¾ x ¾ x ½ x 65 DMS Flared- Black Rubber Insulation |
| LS141212100DMSF | LS ¼ x ½ x ½ x 100 DMS Flared- Black Rubber Insulation |
| LS143812100DMSF | LS ¼ x ¾ x ½ x 100 DMS Flared- Black Rubber Insulation |
| LS145812100DMSF | LS ¼ x ¾ x ½ x 100 DMS Flared- Black Rubber Insulation |

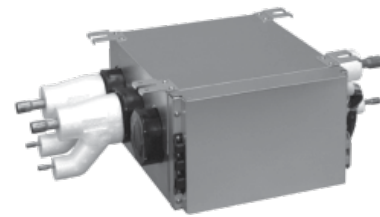
| LINE SETS | | | |
|-----------------|------------|--------------|------------------|
| MODEL NUMBER | SIZE (IN.) | LENGTH (FT.) | INSULATION (IN.) |
| LS14381210DMSF | 1/4 x 3/8 | 10 | 1/2 |
| LS14381215DMSF | 1/4 x 3/8 | 15 | 1/2 |
| LS14381230DMSF | 1/4 x 3/8 | 30 | 1/2 |
| LS14381250DMSF | 1/4 x 3/8 | 50 | 1/2 |
| LS14381265DMSF | 1/4 x 3/8 | 65 | 1/2 |
| LS143812100DMSF | 1/4 x 3/8 | 100 | 1/2 |
| LS14121210DMSF | 1/4 x 1/2 | 10 | 1/2 |
| LS14121215DMSF | 1/4 x 1/2 | 15 | 1/2 |
| LS14121230DMSF | 1/4 x 1/2 | 30 | 1/2 |
| LS14121250DMSF | 1/4 x 1/2 | 50 | 1/2 |
| LS14121265DMSF | 1/4 x 1/2 | 65 | 1/2 |
| LS141212100DMSF | 1/4 x 1/2 | 100 | 1/2 |
| LS14581210DMSF | 1/4 x 5/8 | 10 | 1/2 |
| LS14581215DMSF | 1/4 x 5/8 | 15 | 1/2 |
| LS14581230DMSF | 1/4 x 5/8 | 30 | 1/2 |
| LS14581250DMSF | 1/4 x 5/8 | 50 | 1/2 |
| LS14581265DMSF | 1/4 x 5/8 | 65 | 1/2 |
| LS145812100DMSF | 1/4 x 5/8 | 100 | 1/2 |



Ductless Systems

Multi-Zone Compatibility Table

| INDOOR TO OUTDOOR COMPATIBILITY TABLE | | | | | |
|---------------------------------------|------------|----------------------------|----------------------------|-------------|------------|
| | | 2MXL18QMVJU 2MXS18NMVJU | 3MXL24QMVJU 3MXS24NMVJU | 4MXS36NMVJU | RMXS48LVJU |
| Wall-Mounted | CTXS07LVJU | x | x | x | x |
| | FTXS09LVJU | x | x | x | x |
| | FTXS12LVJU | x | x | x | x |
| | FTXS15LVJU | x | x | x | x |
| | FTXS18LVJU | | x | x | x |
| | FTXS24LVJU | | | x | x |
| 2x2 Cassette | FFQ09LVJU | x | x | x | x |
| | FFQ12LVJU | x | x | x | x |
| | FFQ15LVJU | x | x | x | x |
| | FFQ18LVJU | | x | x | x |
| Floor Standing | FVXS09NVJU | x | x | x | x |
| | FVXS12NVJU | x | x | x | x |
| | FVXS15NVJU | x | x | x | x |
| | FVXS18NVJU | | x | x | x |
| Duct-Connected | FDXS09LVJU | x | x | x | x |
| | FDXS12LVJU | x | x | x | x |
| | CDXS15LVJU | x | x | x | x |
| | CDXS18LVJU | | x | x | x |
| | CDXS24LVJU | | | x | x |



RMXS48LVJU requires at least one branch port unit. Two sizes available, 2-port and 3-port. Refer to installation manual for full refrigerant piping lengths and requirements.



AsureSM
EXTENDED SERVICE PLAN

PROTECT THEIR INVESTMENT FOR YEARS TO COME...
ASURESM EXTENDED SERVICE PLAN

Daikin brand equipment is optimized to provide premium comfort through the latest innovations. However, any mechanical product occasionally fails. As an authorized Asure dealer, you can offer your customer extended service agreements as a safeguard from those occasional failures.

The Asure program provides your business with the following benefits:

- Adds value to homeowner's purchase. Provides the homeowner peace-of-mind that they have protected their investment and guaranteed their comfort system for the terms of their agreement against unplanned repair bills.
- Builds your customer base. By providing your customer with worry-free comfort, you earn your customer's loyalty and confidence, along with that of their friends and neighbors. What better way is there to grow your business?

What is covered?

Asure provides coverage on all functional parts of Daikin brand 3/4-through-5 ton, single-phase ductless HVAC products. Coverage may be offered on equipment that has been installed within the last year. Routine maintenance and the cost to correct failures other than those considered to be manufacturing defects are excluded from coverage. For more information, please visit www.daikincomfort.com.



About Daikin:



Daikin Industries, Ltd. (DIL) is a global Fortune 1000 company which celebrated its 90th anniversary in May 2014. The company is recognized as one of the largest HVAC (Heating, Ventilation, Air Conditioning) manufacturers in the world. DIL is primarily engaged in developing indoor comfort products and refrigeration systems for residential, commercial and industrial applications. Its consistent success is derived, in part, from a focus on innovative, energy-efficient and premium quality indoor climate and comfort management solutions.

DUCTLESS

Before purchasing this appliance, read important information about its estimated annual energy consumption, yearly operating cost, or energy efficiency rating that is available from your retailer.



Our continuing commitment to quality products may mean a change in specifications without notice.

© 2016 **DAIKIN NORTH AMERICA LLC** · Houston, Texas · USA · www.daikincomfort.com