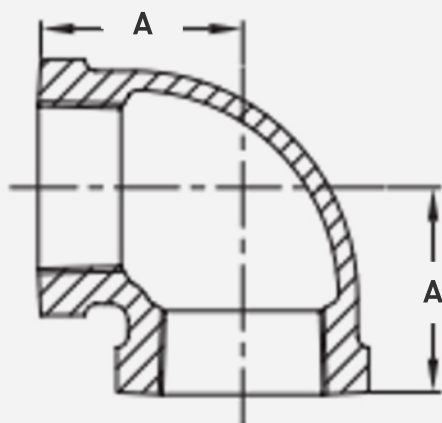


Black 90° Elbow

FEATURES

- **Malleable Iron Construction** – The ASTM A197/A197M compliant malleable iron makes the product strong yet easy to work with.
- **Widely Compatible** – Meets B16.39 and ASME B1.20.1 regulations for malleable female iron pipe thread.



SKU	Size	A
BLE018C	1/8"	0.68"
BLE025C	1/4"	0.81"
BLE038C	3/8"	0.95"
BLE050C	1/2"	1.12"
BLE075C	3/4"	1.31"
BLE100C	1"	1.50"
BLE125C	1-1/4"	1.75"
BLE150C	1-1/2"	1.94"
BLE200C	2"	2.25"
BLE250C	2-1/2"	2.70"
BLE300C	3"	3.08"