

GPD14
PACKAGED DUAL FUEL UNIT

UP TO 14.5 SEER, 8.0 HSPF, 81% AFUE

Multi-Position Installation



Air Conditioning & Heating



Thank goodness
for Goodman.®



At Daikin Comfort Technologies, we believe in American dependability. Units are designed, engineered and assembled in the U.S.A.



Independent, dependable, courteous, prompt, honest, highly-skilled and respectful of you and your home. That's why all the time homeowners say,

"These guys are good – really good."



Why does **Goodman**® brand have such a large fan base?

Many of your neighbors may have discovered that a reliable and energy-efficient home comfort system doesn't have to cost a fortune. **Goodman** brand whole-house systems feature many of the latest and greatest money-saving technology benefits that we can offer. They are designed and engineered to run quietly and pretty much worry-free.

EXTENDED SERVICE PLANS AVAILABLE

For even greater peace-of-mind, ask your dealer or visit our website at www.goodmanmfg.com for more details about AsureSM, an affordable Parts and/or Labor Extended Service Plan for your entire **Goodman** brand HVAC system.[†]

AsureSM
EXTENDED SERVICE PLAN

Ask your dealer for full details.



The **Goodman®** brand is one of the biggest names in cooling, heating and energy-efficient home comfort. That's because **Goodman** brand lives up to its name in a big way, with time-tested energy-efficient technology, highly-durable materials and spot-on manufacturing. So, no matter where you live or whether your home is small or large, Goodman probably has a solution to help keep your home comfortable.

Goodman brand will keep you cool as a cucumber.

The best packaged system is the kind you don't have to worry about. It comes on the moment you need it and then runs quietly and efficiently all year long. The **Goodman** brand GPD14 is loaded with features designed to provide outstanding performance for years to come. We use advanced techniques and materials so you know the cozy, even temperature you feel in every corner of your home is an energy-efficient trend that's here to stay for many years.

Don't let high utility bills make you lose your cool.

Our complete line of packaged systems are priced to help add comfort to your budget from a local independent **Goodman** brand dealer. And that's only the beginning. We want you to smile every time you open your utility bill, so we design energy-efficient technology into our units.

Taking pride in our company heritage.

Goodman brand heating and cooling systems are designed to provide refreshingly affordable and energy-efficient indoor comfort solutions using advanced technology. But the company ultimately adheres to some old-fashioned values, too. **Goodman** brand believes in the integrity of the American worker. That's why **Goodman** brand heating and cooling systems are designed, engineered and assembled in the United States.

Experience reliable indoor comfort for everyone in your home season after season.





A LOT GOES INTO EVERY GOODMAN® BRAND GPD14 PACKAGED UNIT

The art of precision

All-Aluminum Evaporator Coil – A single metal solution that is designed for enhanced durability and performance (select models).

Goodman brand packaged units provide you with reliable, energy-efficient and affordable indoor comfort.

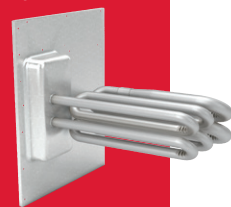
Refrigeration-Grade Premium Copper Tubing and Aluminum Fin Condenser Coil Configuration – Delivers outstanding heat transfer properties.

Heavy-Gauge Galvanized Steel Eenclosure with Powder-Paint Finish – Protects your system from extreme outdoor elements.

Fully-Insulated Blower Compartment – Designed for quiet performance. Panels are conveniently located to provide easy access.

COMPONENT UPGRADE OFFERS BETTER PERFORMANCE

The aluminized steel, tubular primary heat exchanger featured in **Goodman** brand packaged units is likely the most essential component in a packaged unit's performance. This distinctive heat exchanger employs wrinkle-bend technology which was developed to deliver extraordinary durability and long-term reliability.



DUAL FUEL EQUAL DUAL SAVINGS

When properly installed and configured, a dual fuel packaged heat pump system can determine whether it's more economical to heat your home using electricity or natural gas. The GPD14 dual fuel packaged system offers an incredible combination of indoor comfort and energy-efficient performance every month of the year.

When the thermostat calls for cooling performance, the heat pump in this unit functions just like a central air conditioner keeping you cool and comfortable even on the hottest days of summer. In the months when you need moderate heating output, the heat pump automatically reverses the refrigerant flow to provide warm air in your home. And on the coldest days of winter, the gas furnace in this packaged unit provides reliable, consistent heat.

MODEL	SEER	EER	2-4 TON CAPACITY
GPD14	14	12	•

Thank goodness for Goodman.®



COUNT ON OUTSTANDING LIMITED WARRANTY* PROTECTION

20 YEAR **HEAT EXCHANGER LIMITED WARRANTY***

10 YEAR **PARTS LIMITED WARRANTY***

* Complete warranty details available from your local dealer or at www.goodmanmfg.com. To receive the 20-Year Heat Exchanger Limited Warranty (good for as long as you own your home), and 10-Year Parts Limited Warranty, online registration must be completed within 60 days of installation. Online registration is not required in California or Quebec.

When your current packaged unit breaks, it's good to know that your local, independent **Goodman** brand contractor has financing options available to help defray what might be considered an emergency purchase for your home.

PERFORMANCE

UP TO
14.5
SEER

8.0
HSPF

UP TO
81%
AFUE

The 81% AFUE rating on this packaged unit means that 81 cents of every energy dollar warms your home. The Department of Energy (DOE) established the AFUE (Annual Fuel Utilization Efficiency) system to calculate the annual operating cost of residential packaged units.

ONCE YOU CHOOSE THE **GOODMAN® BRAND**, YOU'LL PROBABLY BE A FAN FOR LIFE.



Millions across North America are big fans already.
Once you choose a Goodman brand, you'll probably be a big fan, too!
See why others are saying, "Thank Goodness for Goodman®."

Just go to www.goodmanmfg.com/reviews



HVAC Communicating Control

ComfortBridge™ technology offers off-the-wall smart communicating systems capable of customizing energy-efficient performance, use of any single-stage thermostat, and more.



www.comfortbridge.com



Pure. Clean. Air.

Indoor comfort in your home is about more than just adjusting the temperature on the thermostat. Many homeowners overlook the need for necessary components and systems that can improve the indoor air you breathe.



www.cleancleancomfort.com

GOODMAN IS SOCIAL!



GOODMAN® - A DAIKIN BRAND

Daikin Industries, Ltd. (DIL) is a Fortune 1,000 company with more than 84,870 employees worldwide and is the world's #1 indoor comfort solutions provider. Daikin Comfort Technologies North America, Inc. (DNA) is a subsidiary of DIL, providing Daikin, Amana®, Goodman®, and Quietflex brand products. DNA and affiliates manufacture heating and cooling systems for residential, commercial, and industrial use and are sold via independent HVAC contractors. DNA engineering and manufacturing is located at the Daikin Texas Technology Park near Houston, TX. For additional information, visit www.northamerica-daikin.com.



Additional Information

Before purchasing this appliance, read important information about its estimated annual energy consumption, yearly operating cost, or energy efficiency rating that is available from your retailer.



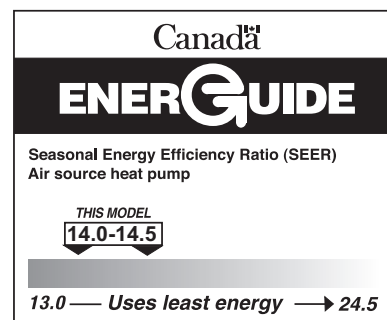
Air Conditioning & Heating

A DAIKIN BRAND

Our continuing commitment to quality products may mean a change in specifications without notice.

© 2022 **DAIKIN COMFORT TECHNOLOGIES NORTH AMERICA, INC.**

Houston, Texas · USA · www.goodmanmfg.com



CB-GPD14_05-22