

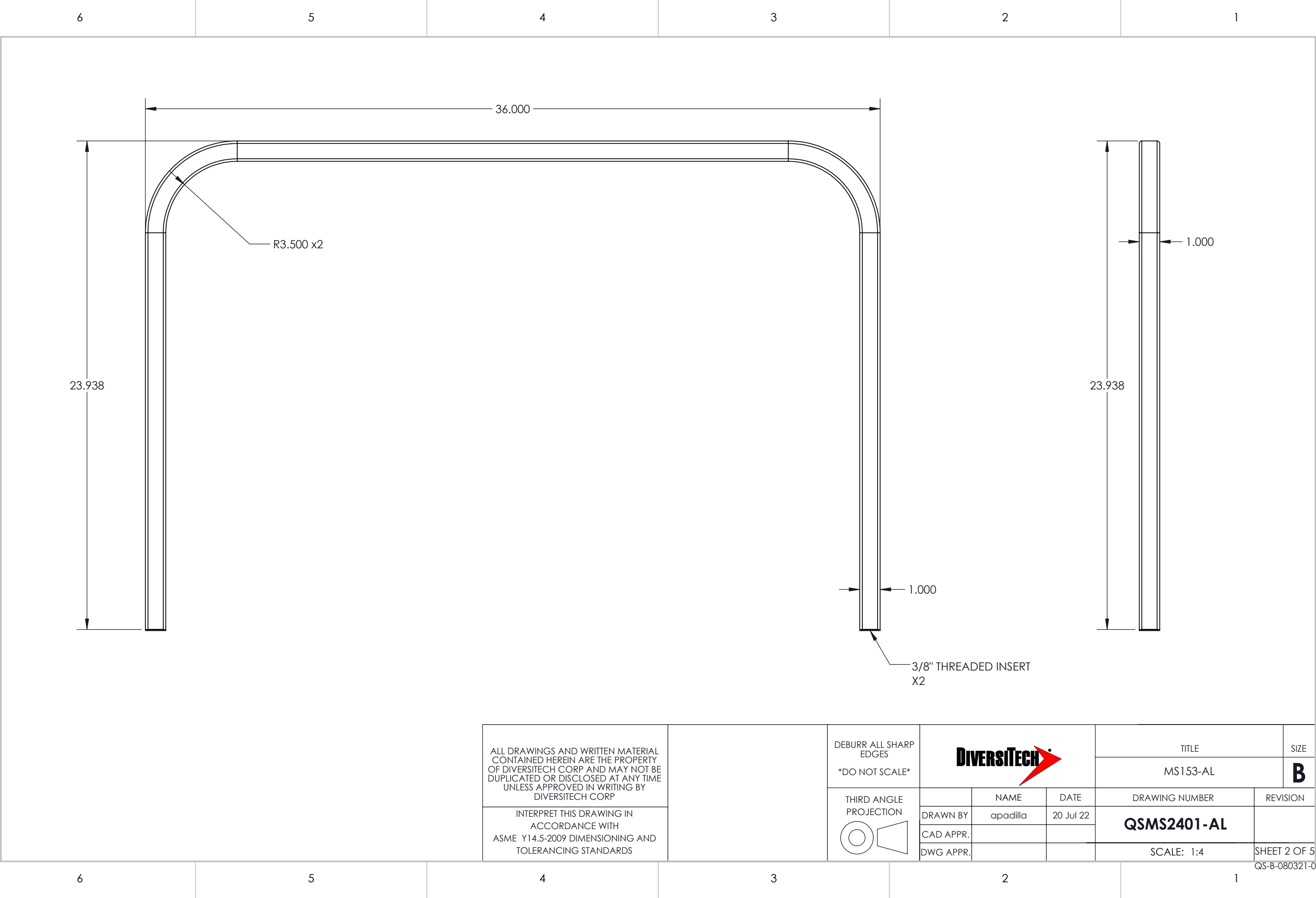


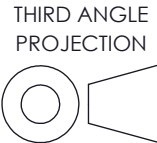
ITEM NO.	PART NUMBER	DESCRIPTION	QTY.												
1	MS153-AL	24" U-hoop QSMS2401-AL	2												
2	MS119-AL	MINI SPLIT LONG SADDLE ARM	2	ALL DRAWINGS AND WRITTEN MATERIAL CONTAINED HEREIN ARE THE PROPERTY OF DIVERSITECH CORP AND MAY NOT BE DUPLICATED OR DISCLOSED AT ANY TIME UNLESS APPROVED IN WRITING BY DIVERSITECH CORP	UNLESS OTHERWISE SPECIFIED DIMENSIONS & TOLERANCES ARE IN INCHES			DEBURR ALL SHARP EDGES *DO NOT SCALE*				TITLE		SIZE	
3	MS105-AL	MINI SPLIT 6X6 FEET	4		DIM RANGE	0.02 - 0.12	TOLERANCE					±0.008	THIRD ANGLE PROJECTION 		DRAWING NUMBER
4	HDKMS05	HARDWARE KIT FOR QSMS1802, 2402	1			0.12 - 0.24		±0.012	DRAWN BY	NAME	DATE	QSMS2401-AL			
5	QSR042	MINI SPLIT RUBBER FOOT	8			0.24 - 1.18		±0.020							
6	MS114-AL	ALUMINUM STABILITY RAIL	2	1.18 - 4.72	±0.031	DWG APPR.									
				4.72 - 15.75	±0.047										
				15.75 - 39.4	±0.079										
				39.4 +	±0.118										
				INTERPRET THIS DRAWING IN ACCORDANCE WITH ASME Y14.5-2009 DIMENSIONING AND TOLERANCING STANDARDS											
				</											



ALL DRAWINGS AND WRITTEN MATERIAL CONTAINED HEREIN ARE THE PROPERTY OF DIVERSITECH CORP AND MAY NOT BE DUPLICATED OR DISCLOSED AT ANY TIME UNLESS APPROVED IN WRITING BY DIVERSITECH CORP

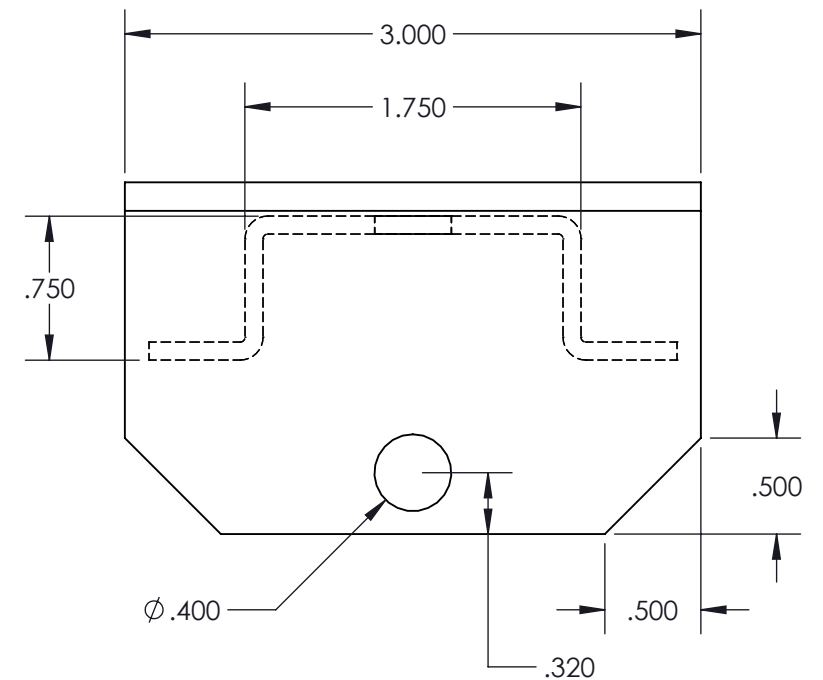
INTERPRET THIS DRAWING IN ACCORDANCE WITH ASME Y14.5-2009 DIMENSIONING AND TOLERANCING STANDARDS

DEBURR ALL SHARP EDGES
DO NOT SCALE

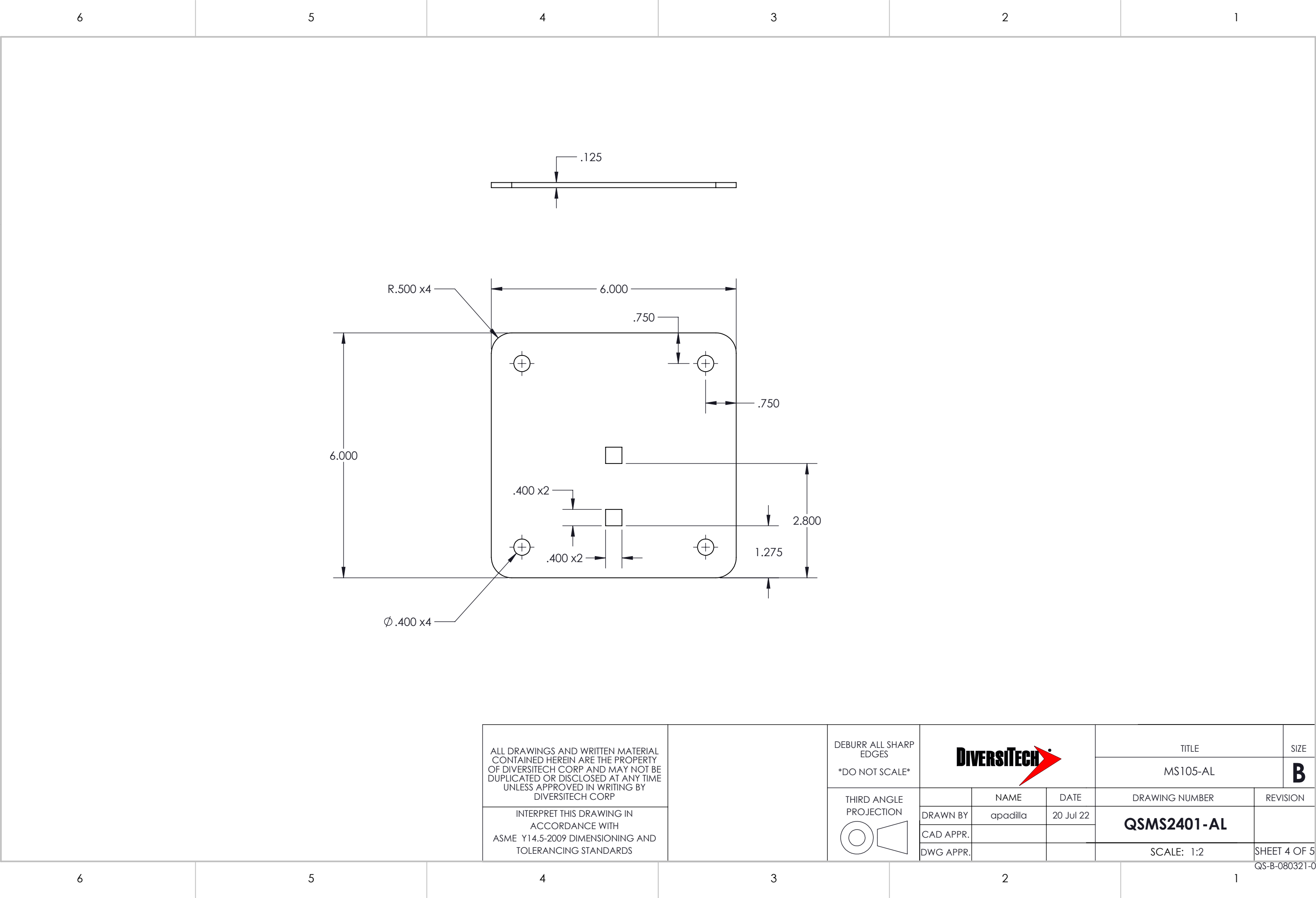


DIVERSITECH			TITLE		SIZE
			MS153-AL		B
DRAWN BY	NAME	DATE	DRAWING NUMBER	REVISION	
	apadilla	20 Jul 22	QSMS2401-AL		
DWG APPR.			SCALE: 1:4		SHEET 2 OF 5

Technical drawing of a shaft assembly. The drawing shows a shaft with a diameter of $1.030^{+.030}_{-.000}$ at the left end. The shaft has a total length of 20.538. A dimension of .120 is shown for the distance from the left end to the first step. A dimension of .906 is shown for the distance from the right end to the last step. The shaft is supported by bearings at both ends.



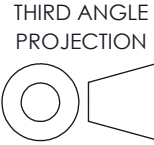
SHEET 3 OF 5



ALL DRAWINGS AND WRITTEN MATERIAL
CONTAINED HEREIN ARE THE PROPERTY
OF DIVERSITECH CORP AND MAY NOT BE
DUPLICATED OR DISCLOSED AT ANY TIME
UNLESS APPROVED IN WRITING BY
DIVERSITECH CORP

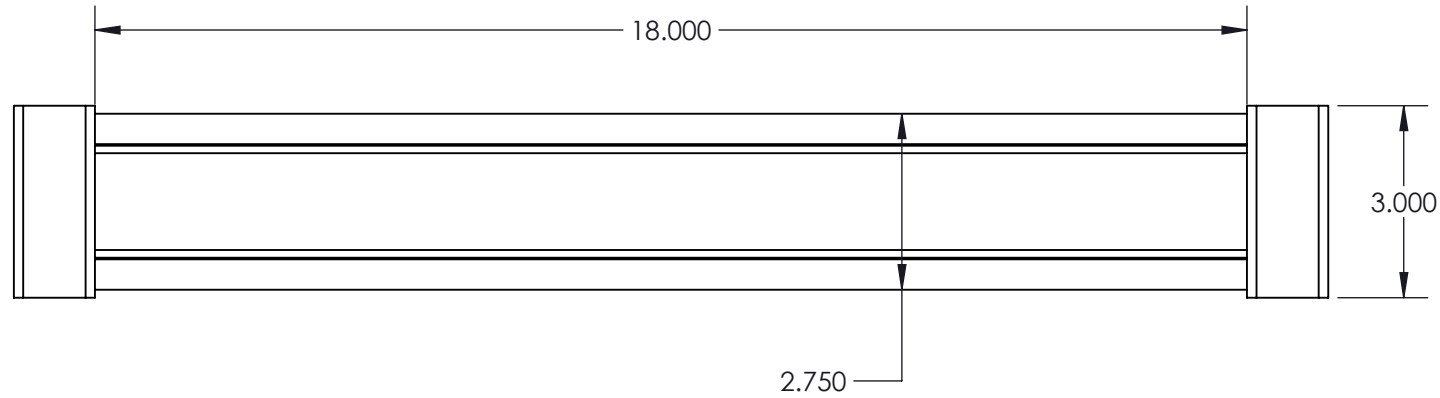
INTERPRET THIS DRAWING IN
ACCORDANCE WITH
ASME Y14.5-2009 DIMENSIONING AND
TOLERANCING STANDARDS

DEBURR ALL SHARP
EDGES
DO NOT SCALE

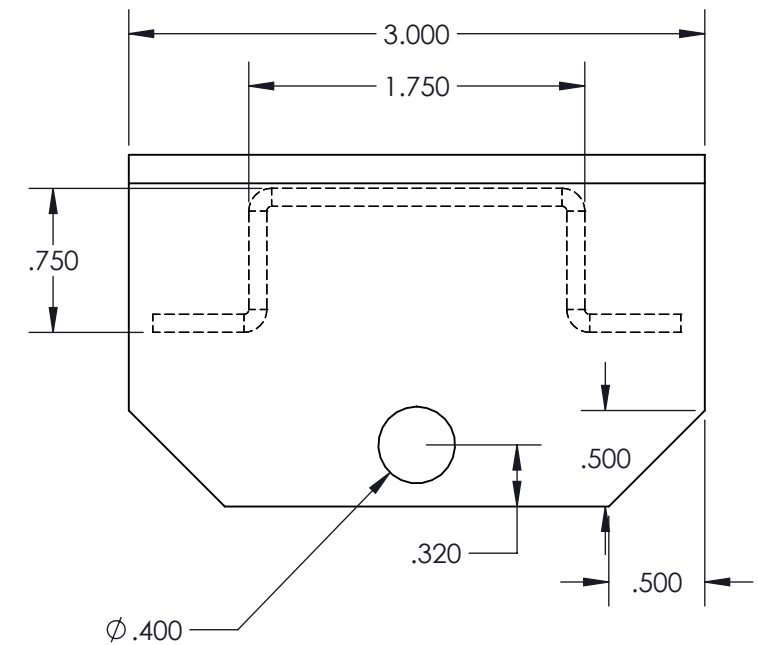
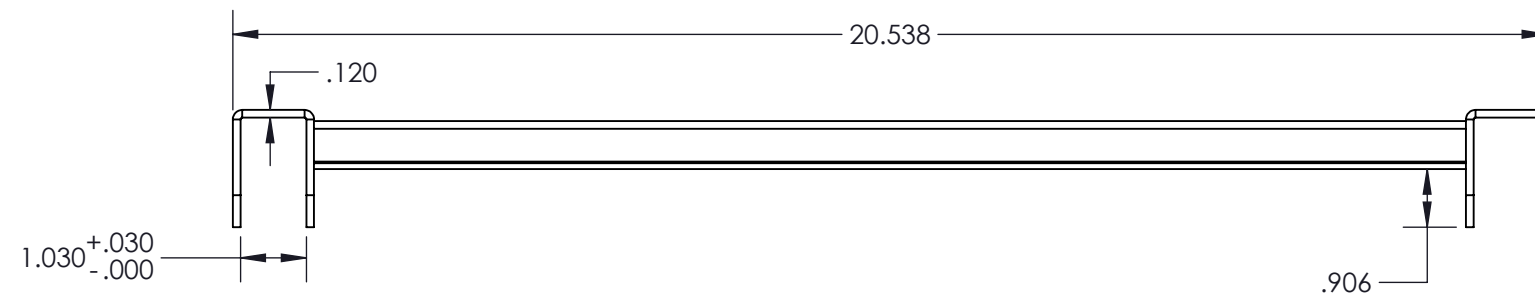


TITLE			SIZE
MS105-AL			B
DRAWING NUMBER		REVISION	
QSMS2401-AL			
SCALE: 1:2		SHEET 4 OF 5	

D



C



B

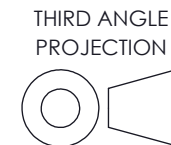
A

ALL DRAWINGS AND WRITTEN MATERIAL
CONTAINED HEREIN ARE THE PROPERTY
OF DIVERSITECH CORP AND MAY NOT BE
DUPLICATED OR DISCLOSED AT ANY TIME
UNLESS APPROVED IN WRITING BY
DIVERSITECH CORP

INTERPRET THIS DRAWING IN
ACCORDANCE WITH
ASME Y14.5-2009 DIMENSIONING AND
TOLERANCING STANDARDS

DEBURR ALL SHARP
EDGES

DO NOT SCALE



TITLE

SIZE

MS114-AL

B

DRAWING NUMBER

REVISION

QSMS2401-AL

SHEET 5 OF 5

SCALE: 1:4

DRAWN BY

NAME _____

DATE

CAD APPR

--	--

DWG APPR
