

CAPEA, CHPEA, CAPFA, CAPTA AND CHPTA PAINTED UPFLOW/DOWNFLOW AND HORIZONTAL "A"



CAPTA – Cased with Internal TXV



CHPTA – Cased with Internal TXV



CAPFA cased



CAPEA
Cased with internal EEV



CHPEA
Horizontal "A" with EEV



Note: Do not use these coils on oil furnaces or any applications where the temperature on the drain pan may exceed 300° F. If these coils are applied with an oil furnace or another application where high temperatures threaten or jeopardize the durability of the drain pan, you must replace the factory-installed drain pan with a high-temperature drain pan. High-temperature drain pan kits are available as field-installed accessories.

R32

Standard Features

- All-Aluminum evaporator coil
- Optimized for use with R-32 refrigerant including circuits and manifolds
- R-32 sensor designed for the life span of the coil
- CAPTA and CHPTA models feature factory-installed thermal expansion valves for cooling and heat pump applications
- CAPEA and CHPEA models feature:
 - Factory-installed electronic expansion valve (EEV) for precise refrigerant control
 - Compatibility with Daikin *One+* smart thermostat and other Daikin communicating equipment
 - Cooling and heat pump applications
 - Fault recall of six most recent faults
- CAPFA models feature optimized metering devices (piston)
- Standardized copper suction tube stub length
- Vertical and horizontal models available
- 21" depth for easier attic access
- CAPFA, CAPTA, CHPTA and CAPEA, CHPEA include single front access panel
- Foil-faced insulation covers the internal casing to reduce cabinet condensation
- Galvanized, leather grain-embossed finish
- Rust resistant, thermoplastic drain pans featuring a low water-retention design
- DecaBDE-free thermoplastic drain pan with secondary drain connections
- Drain pan rails designed to remove and reposition coils with ease without compromising structural integrity
- UV-resistant drain pan
- AHRI certified; ETL listed



* Complete warranty details available from your local dealer or at www.daikincomfort.com. To receive the 12-Year Parts Limited Warranty, online registration must be completed within 60 days of installation. Online registration is not required in California or Québec. The duration of warranty coverage in Texas and Florida differs in some cases.

SS-DCoil-R32

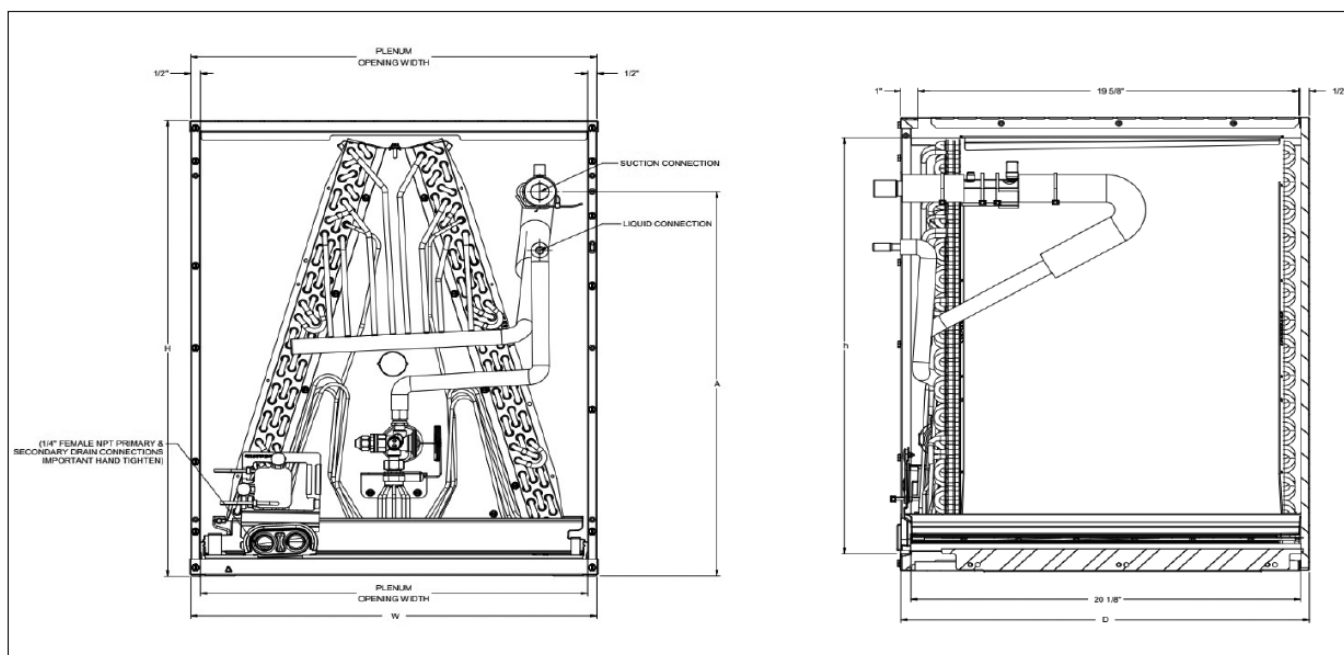
CAPTA — CASED UPFLOW/DOWNFLOW INDOOR COILS

SPECIFICATIONS

MODEL	CABINET DIMENSIONS			NOMINAL TONS	CONNECTION		SHIP WEIGHT (LBS)
	W	D	H		LIQUID	SUCTION	
CAPTA1818A3	14"	21"	18"	1½	⅜"	¾"	30
CAPTA1818B3	17½"	21"	18"	1½	⅜"	¾"	35
CAPTA2422A3	14"	21"	22"	1½ - 2	⅜"	¾"	37
CAPTA2422B3	17½"	21"	22"	1½ - 2	⅜"	¾"	40
CAPTA2422C3	21"	21"	22"	1½ - 2	⅜"	¾"	43
CAPTA3022A3	14"	21"	22"	2 - 2½	⅜"	¾"	37
CAPTA3022B3	17½"	21"	22"	2 - 2½	⅜"	¾"	40
CAPTA3022C3	21"	21"	22"	2 - 2½	⅜"	¾"	43
CAPTA3026B3	17½"	21"	26"	1½ - 2½	⅜"	⅞"	46
CAPTA3026C3	21"	21"	26"	1½ - 2½	⅜"	⅞"	51
CAPTA3626B3	17½"	21"	26"	2 - 3	⅜"	⅞"	48
CAPTA3626C3	21"	21"	26"	2 - 3	⅜"	⅞"	51
CAPTA4230C3	21"	21"	30"	2½ - 3½	⅜"	⅞"	66
CAPTA4230D3	24½"	21"	30"	2½ - 3½	⅜"	⅞"	70
CAPTA6030C3	21"	21"	30"	3½ - 5	⅜"	⅞"	66
CAPTA6030D3	24½"	21"	30"	3½ - 5	⅜"	⅞"	70

Note: For a properly matched system and piston sizing information, refer to Daikin piston kit chart of the corresponding Daikin outdoor unit.

DIMENSIONS



CHPTA— CASED HORIZONTAL INDOOR COILS

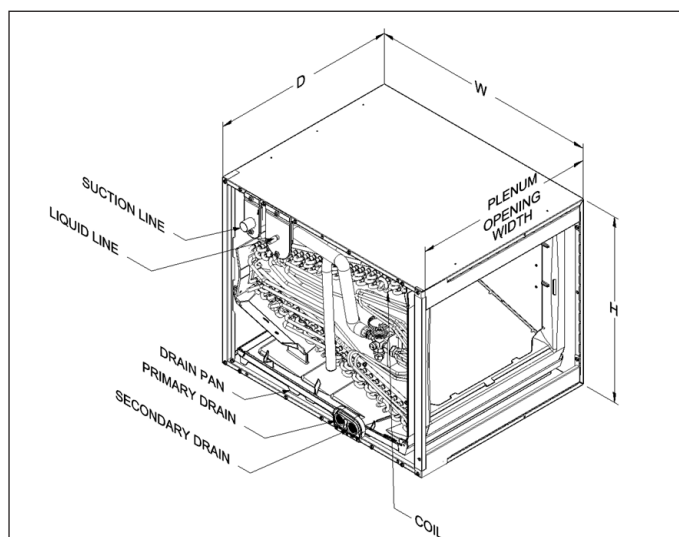
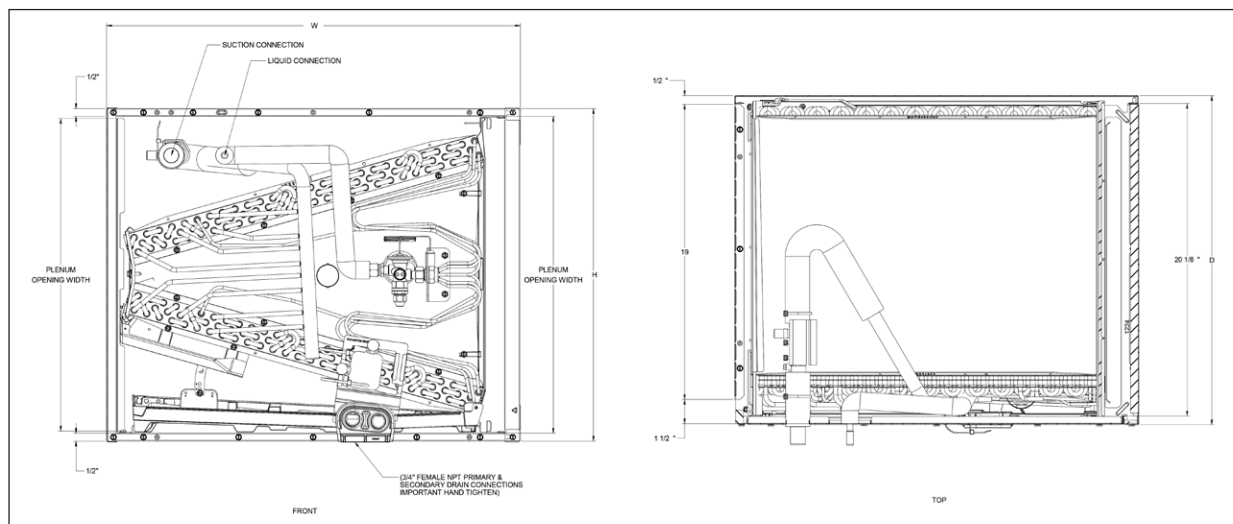


SPECIFICATIONS

MODEL	CABINET DIMENSIONS			NOMINAL TONS	CONNECTION		SHIP WEIGHT (LBS)
	W	D	H		LIQUID	SUCTION	
CHPTA1822A3	22"	21"	14"	1½	¾"	¾"	46
CHPTA1822B3	22"	21"	17½"	1½	¾"	¾"	50
CHPTA2426B3	26"	21"	17½"	1½ - 2	¾"	7⁄8"	55
CHPTA2426C3	26"	21"	21"	1½ - 2	¾"	7⁄8"	57
CHPTA3026B3	26"	21"	17½"	2 - 2½	¾"	7⁄8"	59
CHPTA3026C3	26"	21"	21"	2 - 2½	¾"	7⁄8"	62
CHPTA3630B3	30"	21"	17½"	2½ - 3	¾"	7⁄8"	66
CHPTA3630C3	30"	21"	21"	2½ - 3	¾"	7⁄8"	70
CHPTA4230C3	30"	21"	21"	2½ - 3½	¾"	7⁄8"	70
CHPTA4830C3	30"	21"	21"	3½ - 4	¾"	7⁄8"	78
CHPTA6030D3	30"	21"	24½"	4 - 5	¾"	7⁄8"	82

Note: For a properly matched system and piston sizing information, refer to Daikin piston kit chart of the corresponding Daikin outdoor unit.

DIMENSIONS



CAPFA— CASED HORIZONTAL INDOOR COILS

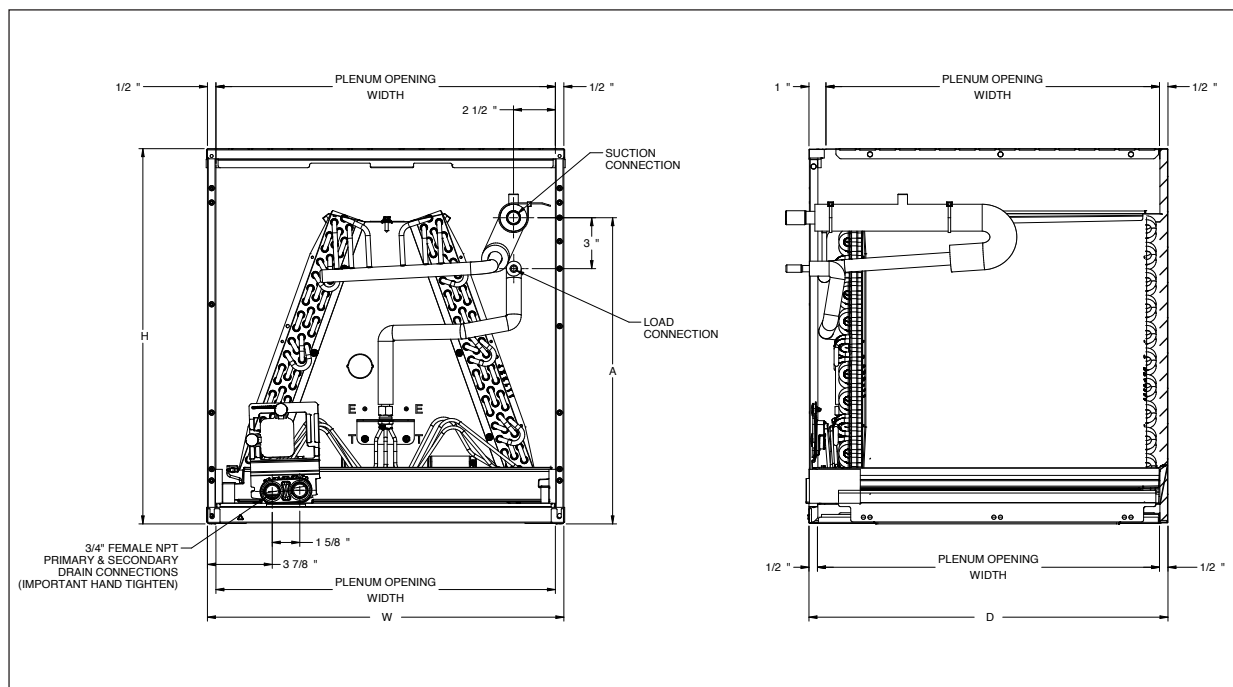


SPECIFICATIONS

MODEL	CABINET DIMENSIONS				NOMINAL TONS	CONNECTION		SHIP WEIGHT (LBS)
	W	D	H	A		LIQUID	SUCTION	
CAPFA1818A3	14"	21"	18"	14"	1½	¾"	¾"	28
CAPFA1818B3	17½"	21"	18"	15½"	1½	¾"	¾"	34
CAPFA1818C3	21"	21"	18"	14"	1½	¾"	¾"	43
CAPFA2422A3	14"	21"	22"	18"	2	¾"	¾"	42
CAPFA2422B3	17½"	21"	22"	18"	2	¾"	¾"	42
CAPFA2422C3	21"	21"	22"	18"	2	¾"	¾"	42
CAPFA3022A3	14"	21"	22"	18"	2½	¾"	¾"	36
CAPFA3022B3	17½"	21"	22"	18"	2½	¾"	¾"	42
CAPFA3022C3	21"	21"	22"	18"	2½	¾"	¾"	42
CAPFA3022D3	24½"	21"	22"	18"	2½	¾"	¾"	53
CAPFA3626B3	17½"	21"	26"	22"	3	¾"	7/8"	46
CAPFA3626C3	21"	21"	26"	22"	3	¾"	7/8"	50
CAPFA3626D3	24½"	21"	26"	22"	3	¾"	7/8"	61
CAPFA4226B3	17½"	21"	26"	22"	3½	¾"	7/8"	46
CAPFA4226C3	21"	21"	26"	22"	3½	¾"	7/8"	50
CAPFA4226D3	24½"	21"	26"	22"	3½	¾"	7/8"	61
CAPFA6030C3	21"	21"	30"	26"	4	¾"	7/8"	66
CAPFA6030D3	24½"	21"	30"	26"	5	¾"	7/8"	69

Note: For a properly matched system and piston sizing information, refer to Daikin piston kit chart of the corresponding Daikin outdoor unit.

DIMENSIONS



CAPEA— CASED HORIZONTAL INDOOR COILS

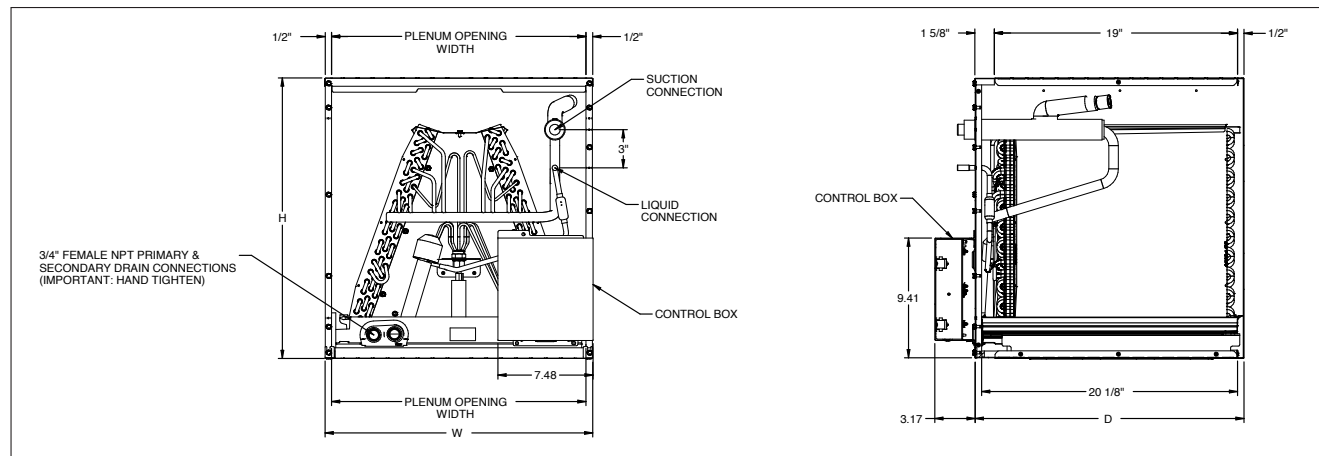


SPECIFICATIONS

MODEL	CABINET DIMENSIONS			NOMINAL TONS	CONNECTION		SHIP WEIGHT (LBS)
	W	D	H		LIQUID	SUCTION	
CAPEA2418B3	17.5	21	18	2	$\frac{5}{16}$ " or $\frac{3}{8}$ "	$\frac{5}{8}$ " or $\frac{3}{4}$ "	43
CAPEA2418C3	21	21	18	2	$\frac{5}{16}$ " or $\frac{3}{8}$ "	$\frac{5}{8}$ " or $\frac{3}{4}$ "	45
CAPEA3022B3	17.5	21	22	2½	$\frac{5}{16}$ " or $\frac{3}{8}$ "	$\frac{3}{4}$ " or $\frac{7}{8}$ "	48
CAPEA3022C3	21	21	22	2½	$\frac{5}{16}$ " or $\frac{3}{8}$ "	$\frac{3}{4}$ " or $\frac{7}{8}$ "	51
CAPEA3626B3	17.5	21	26	3	$\frac{5}{16}$ " or $\frac{3}{8}$ "	$\frac{3}{4}$ " or $\frac{7}{8}$ "	54
CAPEA3626C3	21	21	26	3	$\frac{5}{16}$ " or $\frac{3}{8}$ "	$\frac{3}{4}$ " or $\frac{7}{8}$ "	57
CAPEA3626D3	24.5	21	26	3	$\frac{5}{16}$ " or $\frac{3}{8}$ "	$\frac{3}{4}$ " or $\frac{7}{8}$ "	62
CAPEA4830C3	21	21	30	4	$\frac{3}{8}$ "	$\frac{7}{8}$ " or $1\frac{1}{8}$ "	68
CAPEA4830D3	24.5	21	30	4	$\frac{3}{8}$ "	$\frac{7}{8}$ " or $1\frac{1}{8}$ "	70
CAPEA6030C3	21	21	30	5	$\frac{3}{8}$ "	$\frac{7}{8}$ " or $1\frac{1}{8}$ "	75
CAPEA6030D3	24.5	21	30	5	$\frac{3}{8}$ "	$\frac{7}{8}$ " or $1\frac{1}{8}$ "	78

Note: For a properly matched system and piston sizing information, refer to Daikin piston kit chart of the corresponding Daikin outdoor unit.

DIMENSIONS



CHPEA— CASED HORIZONTAL INDOOR COILS

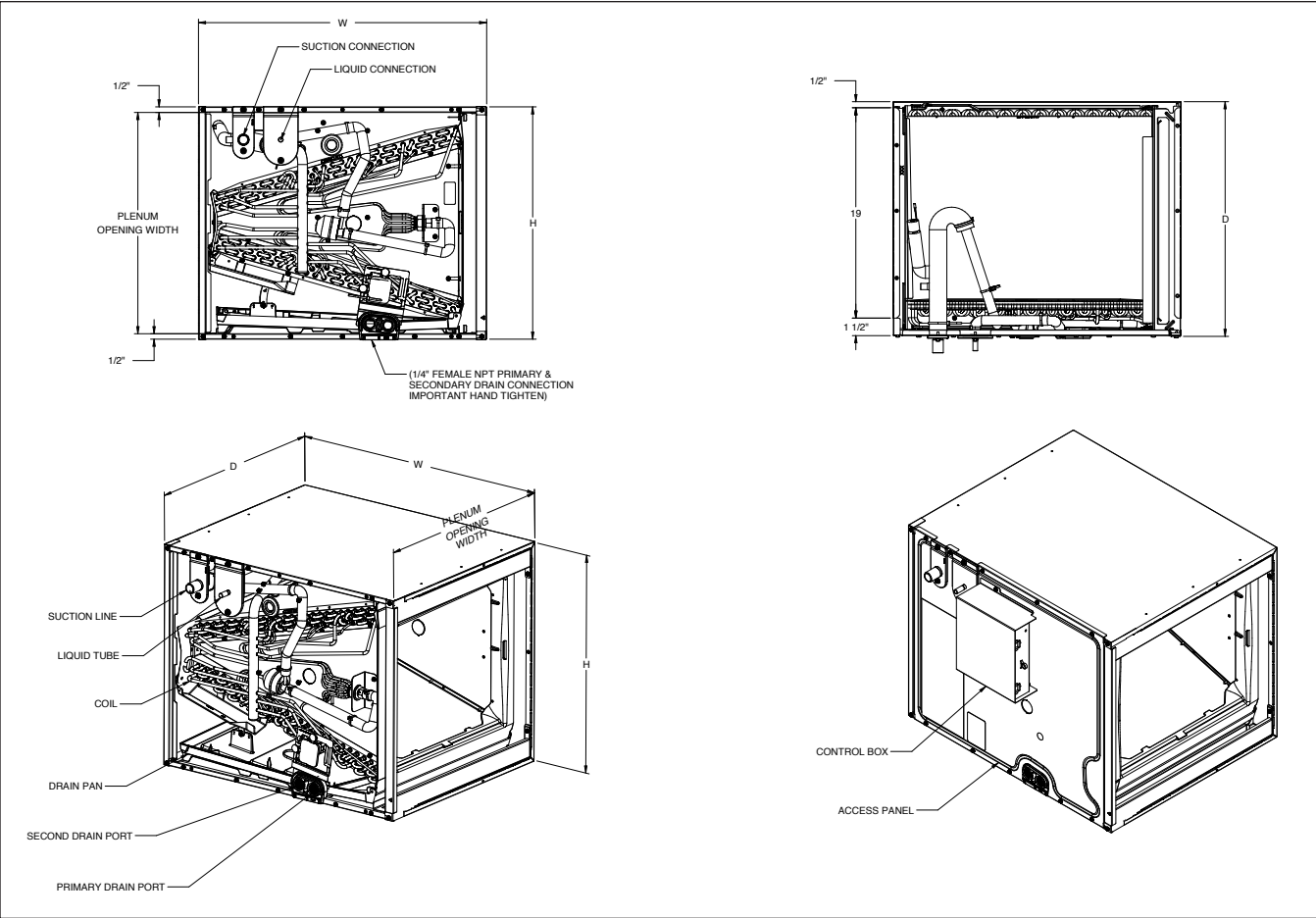


SPECIFICATIONS

MODEL	CABINET DIMENSIONS			NOMINAL TONS	CONNECTION		SHIP WEIGHT (LBS)
	W	D	H		LIQUID	SUCTION	
CHPEA2422B3	22"	21"	17.5"	2	$\frac{5}{16}$ " or $\frac{3}{8}$ "	$\frac{5}{8}$ " or $\frac{3}{4}$ "	56
CHPEA3026B3	26"	21"	17.5"	2½	$\frac{5}{16}$ " or $\frac{3}{8}$ "	$\frac{3}{4}$ " or $\frac{7}{8}$ "	63
CHPEA3026C3	26"	21"	21"	2½	$\frac{5}{16}$ " or $\frac{3}{8}$ "	$\frac{3}{4}$ " or $\frac{7}{8}$ "	67
CHPEA3626B3	26"	21"	17.5"	3	$\frac{5}{16}$ " or $\frac{3}{8}$ "	$\frac{3}{4}$ " or $\frac{7}{8}$ "	68
CHPEA3626C3	26"	21"	21"	3	$\frac{5}{16}$ " or $\frac{3}{8}$ "	$\frac{3}{4}$ " or $\frac{7}{8}$ "	70
CHPEA4830C3	30"	21"	21"	4	$\frac{3}{8}$ "	$\frac{7}{8}$ " or $1\frac{1}{8}$ "	76
CHPEA4830D3	30"	21"	24.5"	4	$\frac{3}{8}$ "	$\frac{7}{8}$ " or $1\frac{1}{8}$ "	78
CHPEA6030D3	30"	21"	21"	5	$\frac{3}{8}$ "	$\frac{7}{8}$ " or $1\frac{1}{8}$ "	76
CHPEA6030C3	30"	21"	24.5"	5	$\frac{3}{8}$ "	$\frac{7}{8}$ " or $1\frac{1}{8}$ "	78

Note: For a properly matched system and piston sizing information, refer to Daikin piston kit chart of the corresponding Daikin outdoor unit.

DIMENSIONS



AIRFLOW DATA FOR CAPTA

AIR QUANTITY (SCFM) VS. PRESSURE DROP (IN. WC)

	SCFM	400	500	600	700	800	900	1000	1100	1200	1300	1400	1500	1600	1700	1800	1900	2000	2100	2200
CAPTA1818A3**	Wet	0.080	0.135	0.205	0.275	0.346	0.422	0.516	0.620	0.715	-	-	-	-	-	-	-	-	-	-
	Dry	0.074	0.115	0.180	0.239	0.297	0.368	0.443	0.543	0.638	-	-	-	-	-	-	-	-	-	-
CAPTA1818B3**	Wet	0.067	0.106	0.165	0.215	0.261	0.317	0.372	0.425	0.482	-	-	-	-	-	-	-	-	-	-
	Dry	0.050	0.087	0.125	0.175	0.215	0.265	0.319	0.381	0.444	-	-	-	-	-	-	-	-	-	-
CAPTA2422A3**	SCFM		500	600	700	800	900	1000	1100	1200	1300									
	Wet		0.108	0.150	0.195	0.250	0.310	0.379	0.460	0.543	0.625	-	-	-	-	-	-	-	-	-
	Dry		0.088	0.125	0.170	0.215	0.265	0.320	0.385	0.440	0.535	-	-	-	-	-	-	-	-	-
CAPTA2422B3**	Wet		0.090	0.130	0.150	0.220	0.250	0.310	0.369	0.436	0.508	-	-	-	-	-	-	-	-	-
	Dry		0.082	0.100	0.140	0.170	0.210	0.260	0.300	0.350	0.410	-	-	-	-	-	-	-	-	-
CAPTA2422C3**	Wet		0.091	0.110	0.139	0.172	0.205	0.245	0.285	0.335	0.387	-	-	-	-	-	-	-	-	-
	Dry		0.069	0.084	0.111	0.133	0.162	0.185	0.210	0.250	0.295	-	-	-	-	-	-	-	-	-
CAPTA3022A3**	SCFM			600	700	800	900	1000	1100	1200	1300	1400								
	Wet			0.150	0.195	0.250	0.310	0.379	0.460	0.543	0.625	0.730	-	-	-	-	-	-	-	-
	Dry			0.125	0.170	0.215	0.265	0.320	0.385	0.440	0.535	0.618	-	-	-	-	-	-	-	-
CAPTA3022B3**	Wet			0.130	0.150	0.220	0.250	0.310	0.369	0.436	0.508	0.584	-	-	-	-	-	-	-	-
	Dry			0.100	0.140	0.170	0.210	0.260	0.300	0.350	0.410	0.480	-	-	-	-	-	-	-	-
CAPTA3022C3**	Wet			0.110	0.139	0.172	0.205	0.245	0.285	0.335	0.387	0.437	-	-	-	-	-	-	-	-
	Dry			0.084	0.111	0.133	0.162	0.185	0.210	0.250	0.295	0.330	-	-	-	-	-	-	-	-
CAPTA3026B3**	Wet			0.115	0.150	0.190	0.229	0.270	0.310	0.365	0.420	0.475	-	-	-	-	-	-	-	-
	Dry			0.096	0.122	0.150	0.183	0.215	0.252	0.292	0.334	0.382	-	-	-	-	-	-	-	-
CAPTA3026C3**	Wet			0.090	0.110	0.140	0.170	0.200	0.240	0.280	0.320	0.370	-	-	-	-	-	-	-	-
	Dry			0.080	0.100	0.120	0.150	0.180	0.210	0.240	0.260	0.300	-	-	-	-	-	-	-	-
CAPTA3626B3**	SCFM					800	900	1000	1100	1200	1300	1400	1500	1600						
	Wet					0.134	0.167	0.204	0.245	0.290	0.338	0.389	0.444	0.485	-	-	-	-	-	-
	Dry					0.127	0.157	0.190	0.229	0.269	0.316	0.360	0.415	0.450	-	-	-	-	-	-
CAPTA3626C3**	Wet					0.100	0.120	0.150	0.180	0.210	0.240	0.280	0.310	0.360	-	-	-	-	-	-
	Dry					0.080	0.100	0.130	0.150	0.170	0.200	0.230	0.270	0.300	-	-	-	-	-	-
CAPTA4230C3**	SCFM							1000	1100	1200	1300	1400	1500	1600	1700	1800	1900			
	Wet							0.130	0.150	0.180	0.210	0.250	0.280	0.310	0.340	0.378	0.414	-	-	-
	Dry							0.110	0.132	0.156	0.181	0.208	0.237	0.270	0.300	0.335	0.372	-	-	-
CAPTA4230D3**	Wet							0.120	0.140	0.160	0.190	0.220	0.250	0.280	0.310	0.350	0.380	-	-	-
	Dry							0.091	0.109	0.127	0.147	0.160	0.190	0.210	0.230	0.260	0.280	-	-	-
CAPTA6030C3**	SCFM							1000	1100	1200	1300	1400	1500	1600	1700	1800	1900	2000	2100	2200
	Wet							0.150	0.174	0.210	0.240	0.270	0.310	0.350	0.400	0.440	0.490	0.540	0.600	0.660
	Dry							0.133	0.160	0.190	0.210	0.250	0.280	0.320	0.350	0.390	0.440	0.480	0.530	0.590
CAPTA6030D3**	SCFM							1000	1100	1200	1300	1400	1500	1600	1700	1800	1900	2000		
	Wet							0.150	0.180	0.210	0.230	0.270	0.300	0.340	0.380	0.430	0.477	0.520	-	-
	Dry							0.120	0.140	0.160	0.190	0.210	0.230	0.260	0.290	0.320	0.350	0.380	-	-

AIRFLOW DATA FOR CHPTA

AIR QUANTITY (SCFM) VS. PRESSURE DROP (IN. WC)

	SCFM	400	500	600	700	800	900	1000	1100	1200	1300	1400	1500	1600	1700	1800	1900	2000	2100	2200
CHPTA1822A3**	Wet	0.095	0.151	0.215	0.284	0.354	0.429	0.519	0.601											
	Dry	0.064	0.094	0.144	0.199	0.284	0.353	0.431	0.513											
CHPTA1822B3**	Wet	0.090	0.120	0.140	0.190	0.250	0.310	0.390	0.460											
	Dry	0.080	0.110	0.130	0.180	0.230	0.290	0.360	0.430											
	SCFM		500	600	700	800	900	1000	1100	1200	1300									
CHPTA2426B3**	Wet		0.130	0.150	0.180	0.204	0.255	0.304	0.365	0.419	0.468									
	Dry		0.100	0.120	0.150	0.170	0.210	0.240	0.290	0.330	0.410									
CHPTA2426C3**	Wet		0.110	0.140	0.160	0.180	0.200	0.230	0.270	0.320	0.370									
	Dry		0.090	0.110	0.130	0.150	0.190	0.220	0.260	0.300	0.350									
	SCFM			600	700	800	900	1000	1100	1200	1300	1400								
CHPTA3026B3**	Wet			0.110	0.150	0.180	0.230	0.280	0.320	0.370	0.430	0.490								
	Dry			0.120	0.140	0.170	0.210	0.250	0.290	0.340	0.400	0.460								
CHPTA3026C3**	Wet			0.100	0.130	0.150	0.170	0.200	0.230	0.260	0.300	0.340								
	Dry			0.060	0.080	0.110	0.130	0.150	0.174	0.198	0.229	0.259								
	SCFM			600	700	800	900	1000	1100	1200	1300									
CHPTA3630B3**	Wet			0.150	0.187	0.229	0.279	0.323	0.372	0.430	0.465									
	Dry			0.128	0.153	0.191	0.237	0.285	0.330	0.377	0.428									
CHPTA3630C3**	Wet			0.140	0.175	0.205	0.245	0.285	0.325	0.365	0.410									
	Dry			0.086	0.105	0.135	0.155	0.185	0.210	0.245	0.279									
	SCFM			600	700	800	900	1000	1100	1200	1300									
CHPTA4230C3**	Wet			0.140	0.175	0.205	0.245	0.285	0.325	0.365	0.410									
	Dry			0.086	0.105	0.135	0.155	0.185	0.210	0.245	0.279									
	SCFM							1000	1100	1200	1300	1400	1500	1600	1700	1800	1900	2000	2100	2200
CHPTA4830C3**	Wet							0.210	0.250	0.304	0.352	0.402	0.457	0.510	0.570	0.630	0.693	0.761	0.831	0.894
	Dry							0.163	0.194	0.226	0.263	0.297	0.337	0.381	0.420	0.470	0.520	0.580	0.630	0.690
	SCFM							1000	1100	1200	1300	1400	1500	1600	1700	1800	1900			
CHPTA6030D3**	Wet							0.161	0.189	0.221	0.254	0.292	0.332	0.370	0.413	0.461	0.502			
	Dry							0.140	0.160	0.190	0.220	0.250	0.283	0.314	0.351	0.389	0.402			

AIRFLOW DATA FOR CAPEA

AIR QUANTITY (SCFM) VS. PRESSURE DROP (IN. WC)

	SCFM	400	500	600	700	800	900	1000	1100	1200	1300	1400								
CAPEA2418B3**	Wet	0.076	0.106	0.137	0.215	0.261	0.317	0.422	0.505	0.591	0.676	0.768								
	Dry	0.050	0.087	0.125	0.175	0.215	0.265	0.319	0.381	0.444	0.511	0.584								
CAPEA2418C3**	Wet	0.089	0.124	0.162	0.211	0.261	0.305	0.366	0.433	0.504	0.591	0.681								
	Dry	0.070	0.101	0.132	0.171	0.205	0.253	0.300	0.350	0.400	0.460	0.525								
	SCFM	400	500	600	700	800	900	1000	1100	1200	1300	1400	1500							
CAPEA3022B3**	Wet	0.084	0.117	0.155	0.199	0.260	0.310	0.390	0.470	0.530	0.608	0.691	0.750							
	Dry	0.047	0.071	0.099	0.161	0.162	0.204	0.248	0.296	0.344	0.398	0.456	0.549							
CAPEA3022C3**	Wet	0.069	0.091	0.110	0.139	0.172	0.205	0.245	0.285	0.335	0.387	0.437	0.492							
	Dry	0.050	0.069	0.084	0.111	0.133	0.162	0.185	0.210	0.250	0.295	0.330	0.375							
	SCFM	400	500	600	700	800	900	1000	1100	1200	1300	1400	1500	1600	1700	1800				
CAPEA3626B3**	Wet	0.054	0.077	0.104	0.134	0.169	0.207	0.250	0.314	0.374	0.412	0.477								
	Dry	0.054	0.074	0.096	0.122	0.150	0.183	0.215	0.252	0.292	0.334	0.382								
CAPEA3626C3**	Wet	0.050	0.070	0.090	0.110	0.140	0.170	0.200	0.240	0.280	0.320	0.370								
	Dry	0.040	0.060	0.080	0.100	0.120	0.150	0.180	0.210	0.240	0.260	0.300								
CAPEA3626D3**	Wet			0.070	0.102	0.138	0.156	0.188	0.226	0.263	0.307	0.359	0.412	0.464	0.518	0.576				
	Dry			0.060	0.077	0.093	0.115	0.140	0.165	0.193	0.224	0.254	0.288	0.326	0.366	0.409				
	SCFM	400	500	600	700	800	900	1000	1100	1200	1300	1400	1500	1600	1700	1800	1900			
CAPEA4830C3**	Wet	0.032	0.051	0.069	0.084	0.105	0.129	0.155	0.185	0.217	0.254	0.291	0.332	0.374	0.418	0.463	0.511			
	Dry	0.037	0.048	0.062	0.077	0.095	0.113	0.133	0.156	0.179	0.205	0.230	0.258	0.290	0.321	0.357	0.393			
CAPEA4830D3**	Wet	0.040	0.050	0.070	0.085	0.105	0.130	0.160	0.180	0.210	0.245	0.280	0.315	0.360	0.400	0.447	0.485			
	Dry	0.028	0.037	0.062	0.062	0.076	0.093	0.109	0.127	0.144	0.172	0.192	0.220	0.245	0.271	0.298	0.326			
	SCFM	400	500	600	700	800	900	1000	1100	1200	1300	1400	1500	1600	1700	1800	1900	2000	2100	2200
CAPEA6030C3**	Wet				0.088	0.115	0.142	0.171	0.200	0.232	0.272	0.326	0.376	0.424	0.476	0.523	0.576	0.625	0.670	0.725
	Dry				0.070	0.089	0.109	0.131	0.156	0.182	0.210	0.240	0.274	0.306	0.344	0.383	0.423	0.469	0.512	0.561
CAPEA6030C3**	Wet				0.076	0.093	0.113	0.133	0.156	0.179	0.206	0.237	0.269	0.299	0.349	0.391	0.433	0.476		
	Dry				0.056	0.070	0.084	0.100	0.117	0.136	0.156	0.175	0.198	0.222	0.250	0.275	0.311	0.339		

ACCESSORIES

HIGH-TEMP DRAIN PAN KITS FOR CAPFA & CAPTA

DRAIN PAN KITS	FURNACE SIZE
HTP7-A	14" Furnaces
<i>coming soon</i>	17½" Furnaces
HTP7-C	21" Furnaces
HTP7-D	24½" Furnaces

DRAIN PAN INSULATION KITS FOR CAPFA & CAPTA & CAPEA

KIT NUMBER	CABINET WIDTH
DPICX-AB	14"
DPICX-BB	17½"
DPICX-CB	21"
DPICX-DB	24½"
DPICX-DC (Use only for CAPTA6030D3, CAPFA6030D3 and CAUTA6030D3)	24½"

UV-C PART NUMBERS

MODELS	LAMP
UC18S15-24	UCP-16013
UC18S15-24B	UCP-16012

HORIZONTAL RIGHT COIL ACCESSORY FOR HIGH HUMIDITY ENVIRONMENT FOR CHPTA & CHPEA

DRAIN PAN KITS	FURNACE SIZE
HHCMK01	All Horizontal cabinets

R32 ACCESSORY KIT FOR NON-A2L FURNACE FOR CAPTA, CHPTA, CAPFA, CAPEA & CHPEA

KIT NUMBER	FURNACE TYPE
0230K00044	Non-A2L furnaces

R32 ZONING ACCESSORY KIT FOR CAPFA, CAPTA, CHPTA, CAPEA & CHPEA

KIT NUMBER	MODELS
0230K00007	All CAPTA, CHPTA, CHPEA, CAPEA and CAPFA models

DOWNFLOW KITS FOR CAPEA

KIT NUMBER	MODELS
DFKE-02	CAPEA4830C3, D3 CAPEA6030C3, D3

[illegible]

[illegible]

NOTES

[illegible]

Our continuing commitment to quality products may mean a change in specifications without notice.
©2024 **DAIKIN COMFORT TECHNOLOGIES MANUFACTURING, L.P.** • Houston, Texas • Printed in the USA.