

Submittal Data Sheet

15.2 SEER2, Air Conditioner System, 2.5 Ton, Outdoor Unit-GLXS4BA3010A*

Submitted By : Goodman/Amana Unitary Test System

Submitted To : N/A

Tags : AHRI 215325649 Products [GLXS4BA3010A* , CA*TA3026*3A* , GM9S800603BNA*] , SEER2 15.2 , EER2 12.0

Region : All (All states of USA)

STANDARD FEATURES:

- High efficiency scroll compressor
- High-density foam compressor sound blanket
- Advanced Copeland® CoreSense™ Technology
- Fully charged for 15' of tubing length
- Copper tube/ enhanced aluminum fin coil-5mm diameter
- Factory-installed filter drier
- Sweat connection service valves with easy access to gauge ports
- Enclosed contactor with lug connection
- High-pressure switch
- Capacitors with extended life
- AHRI Certified
- ETL Listed

CABINET FEATURES:

- Removable grille-style top design compliant with UL 60335-2-40
- Venturi for increased velocity of airflow
- Attractive Architectural Gray powder-paint finish with 500-hour salt-spray approval
- Wire fan discharge grille
- Steel louver coil guard
- Top and side maintenance access
- Single-panel access to controls with space provided for field-installed accessories
- When properly anchored, meets the 2023 Florida Building Code unit integrity requirements for hurricane-type winds (Anchor bracket kits available.)



At Goodman, we believe in American dependability. Units are designed, engineered and assembled in the U.S.A.



Submittal Data Sheet

15.2 SEER2, Air Conditioner System, 2.5 Ton, Outdoor Unit-GLXS4BA3010A*

Submitted By : Goodman/Amana Unitary Test System

Submitted To : N/A

Tags : AHRI 215325649 Products [GLXS4BA3010A* , CA*TA3026*3A* , GM9S800603BNA*] , SEER2 15.2 , EER2 12.0

Region : All (All states of USA)

SYSTEM PERFORMANCE

Outdoor Unit Model No.:	GLXS4BA3010A*	Description :	15.2 SEER2, Air Conditioner System, 2.5 Ton Outdoor System
Indoor Unit Model No.:	CAPTA3026B3A*		
TXV/PISTON :	N/A		
Furnace Unit Model No.:	GM9S800603BN		
Rated Cooling Conditions:	Outdoor (°F DB/WB):95/75 Indoor (°F DB/WB):N/A/N/A	Rated Heating Conditions:	Outdoor (°F DB/WB):N/A/N/A Indoor (°F DB/WB):N/A/N/A
Rated Cooling Capacity (Btu/hr):	28400	OD Rated Heating Capacity (Btu/hr)	N/A
EER2:	12.0	EER:	N/A
Heating COP:	N/A	SEER2:	15.2
SEER:	N/A	AFUE:	80

OUTDOOR UNIT DETAILS : GLXS4BA3010A*

Power Supply (V/Hz/Ph):	208/240/60/1	Compressor Type:	Rotary
Min. Circuit Amps MCA (A):	14.950000000000001	Compressor Stages:	Single Stage
Quantity:	1	Max Overcurrent Protection (MOP) (A):	25
Suction Valve Connection Size (in):	3/4	Compressor Rated Load Amps :	-
Liquid Valve Connection Size (in):	-	Refrigerant Type:	R-32
Sound Power(High/Med/Low) (dBA):	71 / - / -	Holding Refrigerant Charge (oz):	63
Cooling Operation Range (°F DB):	55 - 125	Additional Charge (oz/ft):	0.55
Heating Operation Range (°F DB):	N/A	Pre-charge Piping (Length) (ft):	15
Net Weight (lb):	68	Dimensions (HxWxD) (in):	32 x 29 x 29
Gross Weight (lb):	167	*Max. Pipe Length (Vertical) (ft):	79
*Max. Pipe Length (Total) (ft):	200		

**Refer to Long Line Set Application TP-107 for lines greater than 80 ft. or vertical elevation changes more than 50 ft. for single stage equipment and 25 ft. for 2-stage equipment.*



At Goodman, we believe in American dependability. Units are designed, engineered and assembled in the U.S.A.



Submittal Data Sheet

15.2 SEER2, Air Conditioner System,2.5 Ton, Outdoor Unit-GLXS4BA3010A*

Submitted By : Goodman/Amana Unitary Test System

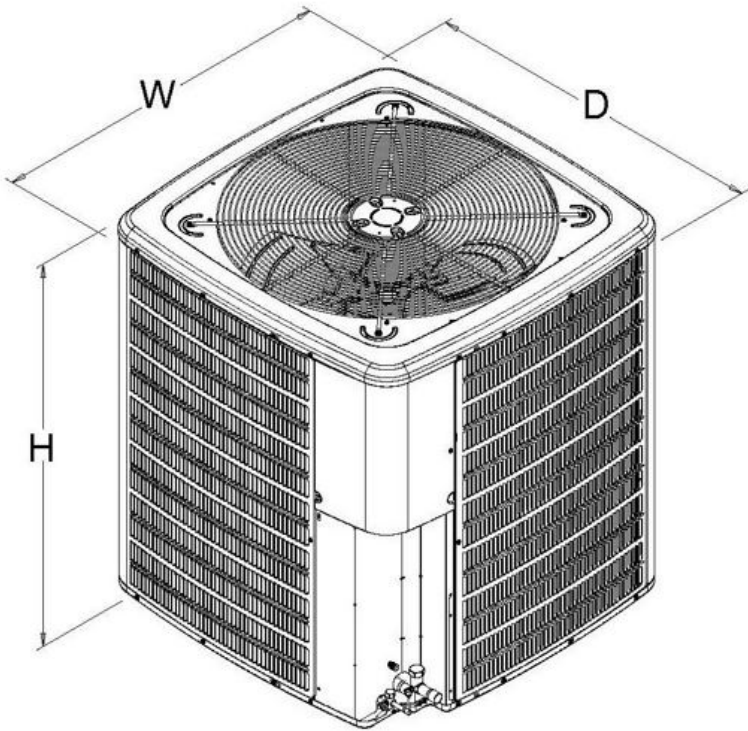
Submitted To : N/A

Tags : AHRI 215325649 Products [GLXS4BA3010A* , CA*TA3026*3A* , GM9S800603BNA*] , SEER2 15.2 , EER2 12.0

Region : All (All states of USA)

MODEL	DIMENSIONS		
	W"	D"	H"
GLXS4BA1810A*	26	26	27
GLXS4BA2410A*	26	26	27
GLXS4BA3010A*	29	29	32
GLXS4BA3610A*	29	29	39½
GLXS4BA4210A*	35½	35½	35¾
GLXS4BA4810A*	35½	35½	35¾
GLXS4BA6010A*	35½	35½	39½

*Note: All the Dimensions (W, D, H) are for reference only.



At Goodman, we believe in American dependability. Units are designed, engineered and assembled in the U.S.A.



Submittal Data Sheet

15.2 SEER2, Air Conditioner System, 2.5 Ton, Outdoor Unit-GLXS4BA3010A*

Submitted By : Goodman/Amana Unitary Test System

Submitted To : N/A

Tags : AHRI 215325649 Products [GLXS4BA3010A* , CA*TA3026*3A* , GM9S800603BNA*] , SEER2 15.2 , EER2 12.0

Region : All (All states of USA)

STANDARD FEATURES:

- All-Aluminum evaporator coil
- Optimized for use with R-32 refrigerant including circuits and manifolds
- R-32 sensor designed for the life span of the coil
- Factory-installed thermal expansion valves for cooling and heat pump applications
- Standardized copper suction tube stub length
- Check flowrate for cooling and heat pump applications
- Vertical application
- 21" depth for easier attic access
- Single front access panel
- Foil-faced insulation covers the internal casing to reduce cabinet condensation
- Galvanized, leather grain-embossed finish
- Rust resistant, thermoplastic drain pan featuring a low water-retention design
- DecaBDE-free thermoplastic drain pan with secondary drain connections
- Drain pan rails designed to remove and reposition coils with ease without compromising structural integrity
- UV-resistant drain pan
- AHRI certified
- ETL Listed

CABINET FEATURES:

- **DATA IS NOT AVAILABLE**



At Goodman, we believe in American dependability. Units are designed, engineered and assembled in the U.S.A.



Submittal Data Sheet

15.2 SEER2, Air Conditioner System,2.5 Ton, Outdoor Unit-GLXS4BA3010A*
Submitted By : Goodman/Amana Unitary Test System
Submitted To : N/A
Tags : AHRI 215325649 Products [GLXS4BA3010A* , CA*TA3026*3A*, GM9S800603BNA*] , SEER2 15.2 , EER2 12.0
Region : All (All states of USA)

INDOOR UNIT DETAILS : CAPTA3026B3A*

Quantity:		Configuration:	Upflow/Downflow
Cased VS Uncased:	Cased	Dimensions (HxWxD) (in) :	26 x 17.5 x 21
Suction Connection Size (in) :	7/8	Net Weight (lb):	-
Liquid Connection Size (in) :	3/8	Gross Weight (lb):	52
Condensate Connection (in) :	3/4	Power Voltage (lb):	-
Current Type :	-	Power Phase:	-
Power Frequency :	-	Min Voltage :	-
Max Voltage :	-	MCA :	-
MOP :	-	Electric Heat Range :	-
Indoor Blower FLA :	-	Fan Motor Output :	-



At Goodman, we believe in American dependability. Units are designed, engineered and assembled in the U.S.A.



Submittal Data Sheet

15.2 SEER2, Air Conditioner System, 2.5 Ton, Outdoor Unit-GLXS4BA3010A*

Submitted By : Goodman/Amana Unitary Test System

Submitted To : N/A

Tags : AHRI 215325649 Products [GLXS4BA3010A* , CA*TA3026*3A* , GM9S800603BNA*] , SEER2 15.2 , EER2 12.0

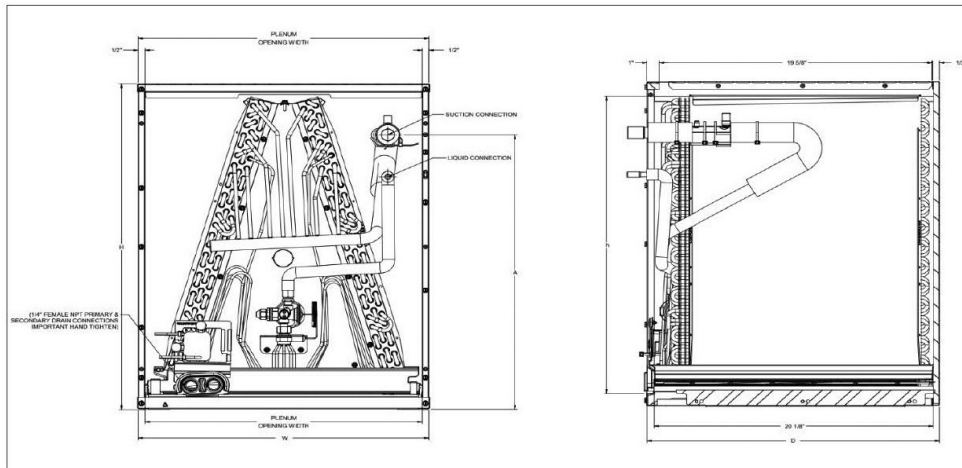
Region : All (All states of USA)

SPECIFICATIONS

MODEL	CABINET DIMENSIONS			NOMINAL TONS	CONNECTION		SHIP WEIGHT (lbs)
	W	D	H		LIQUID	SUCTION	
CAPTA1818A3	14"	21"	18"	1½	¾"	¾"	30
CAPTA1818B3	17½"	21"	18"	1½	¾"	¾"	35
CAPTA2422A3	14"	21"	22"	1½ - 2	¾"	¾"	37
CAPTA2422B3	17½"	21"	22"	1½ - 2	¾"	¾"	40
CAPTA2422C3	21"	21"	22"	1½ - 2	¾"	¾"	43
CAPTA3022A3	14"	21"	22"	2 - 2½	¾"	¾"	37
CAPTA3022B3	17½"	21"	22"	2 - 2½	¾"	¾"	40
CAPTA3022C3	21"	21"	22"	2 - 2½	¾"	¾"	43
CAPTA3026B3	17½"	21"	26"	1½ - 2½	¾"	¾"	46
CAPTA3026C3	21"	21"	26"	1½ - 2½	¾"	¾"	51
CAPTA3626B3	17½"	21"	26"	2 - 3	¾"	¾"	48
CAPTA3626C3	21"	21"	26"	2 - 3	¾"	¾"	51
CAPTA4230C3	21"	21"	30"	2½ - 3½	¾"	¾"	66
CAPTA4230D3	24½"	21"	30"	2½ - 3½	¾"	¾"	70
CAPTA6030C3	21"	21"	30"	3½ - 5	¾"	¾"	66
CAPTA6030D3	24½"	21"	30"	3½ - 5	¾"	¾"	70

Note: For a properly matched system and piston sizing information, refer to Daikin piston kit chart of the corresponding Daikin outdoor unit.

DIMENSIONS



At Goodman, we believe in American dependability. Units are designed, engineered and assembled in the U.S.A.



Submittal Data Sheet

15.2 SEER2, Air Conditioner System, 2.5 Ton, Outdoor Unit-GLXS4BA3010A*

Submitted By : Goodman/Amana Unitary Test System

Submitted To : N/A

Tags : AHRI 215325649 Products [GLXS4BA3010A* , CA*TA3026*3A* , GM9S800603BNA*] , SEER2 15.2 , EER2 12.0

Region : All (All states of USA)

STANDARD FEATURES:

- Heavy-duty aluminized-steel tubular heat exchanger
- "Silicon Nitride igniter"
- Color-coded low-voltage terminals
- Multi-speed ECM blower motor with continuous fan speed
- Fault code LED Output
- Single-Stage gas Valve
- Single-speed inducer draft blower

CABINET FEATURES:

- DATA IS NOT AVAILABLE



At Goodman, we believe in American dependability. Units are designed, engineered and assembled in the U.S.A.



Submittal Data Sheet

15.2 SEER2, Air Conditioner System,2.5 Ton, Outdoor Unit-GLXS4BA3010A*

Submitted By : Goodman/Amana Unitary Test System

Submitted To : N/A

Tags : AHRI 215325649 Products [GLXS4BA3010A* , CA*TA3026*3A*, GM9S800603BNA*] , SEER2 15.2 , EER2 12.0

Region : All (All states of USA)

INDOOR FURNACE UNIT DETAILS : GM9S800603BNA*

Configuration:	Upflow/Horizontal	Blower/Motor Size:	Multi Speed ECM
NOx:	Natural Gas	Communication:	Non-Communicating
Power Supply (V/Hz/Ph):	115/60/1	Temperature Rise Range High Fire (° F):	20-50
Min. Circuit Amps MCA (A):	8.7	Temperature Rise Range Low Fire (° F):	-
Max Overcurrent Protection (MOP) (A):	15	High Fire Input Capacity :	60000
AFUE :	80	High Fire Output Capacity :	48,000
Vent Diameter (In):	-	Low Fire Input Capacity :	-
Net Weight (lb):	100	Low fire output Capacity :	-
Gross Weight (lb):	98	Dimensions (HxWxD) (in):	33-3/8 x 17-1/2 x 28
Power Voltage (lb):	115	Current Type :	-
Power Phase:	1	Power Frequency :	60
Min Voltage :	-	Max Voltage :	-
MCA :	8.7	MOP :	15
Electric Heat Range :	-	Indoor Blower FLA :	-
Fan Motor Output :	-	Outdoor Fan LRA :	-



At Goodman, we believe in American dependability. Units are designed, engineered and assembled in the U.S.A.



Submittal Data Sheet

15.2 SEER2, Air Conditioner System, 2.5 Ton, Outdoor Unit-GLXS4BA3010A*

Submitted By : Goodman/Amana Unitary Test System

Submitted To : N/A

Tags : AHRI 215325649 Products [GLXS4BA3010A* , CA*TA3026*3A* , GM9S800603BNA*] , SEER2 15.2 , EER2 12.0

Region : All (All states of USA)

INDOOR Furnance (GM9S800603BN)
Dimensional Drawing is not available



At Goodman, we believe in American dependability. Units are designed, engineered and assembled in the U.S.A.

