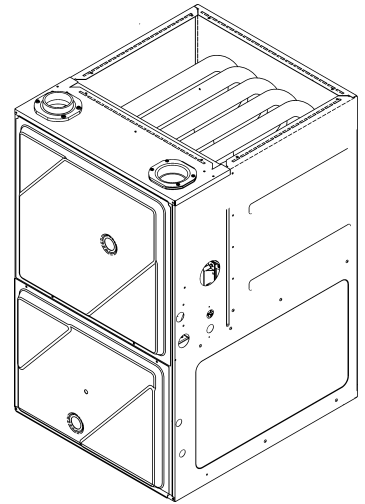


GR9T96 EEM Up Flow Furnace

GR9T960303ANAA
GR9T960403ANAA
GR9T960603ANAA
GR9T960603BNAA
GR9T960803BNAA
GR9T960804CNAA
GR9T961004CNAA
GR9T961005CNAA
GR9T961205DNAA



This manual is to be used by qualified technicians only.

© 2024 Goodman Manufacturing Company, L.P. ♦ 19001 Kermier Rd. ♦ Waller, TX 77484

Important Information

Index

Functional Parts List	3
Illustration and Parts	4 - 11

Views shown are for parts illustrations only, not servicing procedures.

Text Codes:

AR - As Required

NA - Not Available

NS - Not Shown

00000000 - See Note

QTY - Quantity Example (QTY 3) (If Quantity not shown, Quantity = 1)

M - Model Example (M1) (If M Code not shown, then part is used on all Models)

Expanded Model Nomenclature:

Example M1 - Model#1 M2 - Model#2 M3 - Model#3

Goodman Manufacturing Company, L.P. is not responsible for personal injury or property damage resulting from improper service. Review all service information before beginning repairs.

Warranty service must be performed by an authorized technician, using authorized factory parts. If service is required after the warranty expires, Goodman Manufacturing Company, L.P. also recommends contacting an authorized technician and using authorized factory parts.

Goodman Manufacturing Company, L.P. reserves the right to discontinue, or change at any time, specifications or designs without notice or without incurring obligations.

For assistance within the U.S.A. contact:

Homeowner Support

Goodman Manufacturing Company, L.P.

19001 Kermier Road

Waller, Texas 77484

877-254-4729-Telephone

713-863-2382-Facsimile

For assistance outside the U.S.A. contact:

International Division

Goodman Manufacturing Company, L.P.

19001 Kermier Road

Waller, Texas 77484

713-861-2500-Telephone

713-863-2382-Facsimile

Functional Parts

Part

No: Description:

0130F00038	AUX LIMIT - LT BLUE 120° (QTY 2)	0130F00436	SWITCH, PRESSURE (M5)
0163F00017	BECKETT BURNER (QTY 2)	0130F00445	SWITCH, PRESSURE (M9)
0271F00607	BLOWER SHELL & WHEEL ASSY (M1, M2, M3)	0130F00435	SWITCH, PRESSURE (M4)
0130F00010	FLAME SENSOR	10690402	SWITCH-INTERLOCK
0151M00027	GAS VALVE	0130M00140	TRANSFORMER, 120V TO 24V,40VA
0257F20148	HEAT EXCHANGER ASSY (M8)		
0257F20146	HEAT EXCHANGER ASSY (M3)		
0257F20145	HEAT EXCHANGER ASSY (M2)		
0257F20144	HEAT EXCHANGER ASSY (M1)		
0257F20139	HEAT EXCHANGER ASSY (M9)		
0257F20133	HEAT EXCHANGER ASSY (M6)		
0257F20132	HEAT EXCHANGER ASSY (M5)		
0257F20131	HEAT EXCHANGER ASSY (M4)		
0257F20147	HEAT EXCHANGER ASSY (M7)		
0130F00008	IGNITOR-SINI 17 SEC		
0130F00036	LIMIT, PRIMARY (M9)		
20162906	LIMIT, PRIMARY (M4, M7)		
20162904	LIMIT, PRIMARY (M5, M6)		
20162903	LIMIT, PRIMARY (M1, M2, M3, M8)		
0130F00123	LIMIT, RESET MAN (M5)		
10123538	LIMIT-MAN-LIGHT GREEN (M1, M2)		
10123527	LIMIT-RESET MAN-BROWN (M9)		
10123534	LIMIT-RESET MAN-ORANGE (M7, M8)		
10123539	LIMIT-RESET MAN-ORANGE (M4, M6)		
10123517	LIMIT-RESET MAN-WHITE (M3)		
0271F00507	MORRISON 11 X 10 BLOWER (M6, M7, M8)		
0271F00508	MORRISON 11 X 11 BLOWER (M9)		
0271F00506	MORRISON 11 X 8 BLOWER (M4, M5)		
0131F00333M	MOTOR 1 HP W/O CONTROLLER (M6)		
0131F00334M	MOTOR 1 HP W/O CONTROLLER (M7, M8, M9)		
0131F00332M	MOTOR 1/2 HP W/O CONTROLLER (M1, M2, M3, M4, M5)		
0131F00240	MOTOR PROGRAM (M9)		
0131F00239	MOTOR PROGRAM (M8)		
0131F00238	MOTOR PROGRAM (M7)		
0131F00236	MOTOR PROGRAM (M5)		
0131F00235	MOTOR PROGRAM (M4)		
0131F00234	MOTOR PROGRAM (M3)		
0131F00232	MOTOR PROGRAM (M1)		
0131F00237	MOTOR PROGRAM (M6)		
0131F00233	MOTOR PROGRAM (M2)		
0171M00002	MOTOR-ID, BLOWER (M4, M5, M6, M7, M8, M9)		
PCBBF302V010	PCB, CIRCUIT BOARD		
0130F00645	PRESSURE SWITCH (M3)		
0130F00429	PRESSURE SWITCH (M4, M5, M6, M7, M8, M9)		
0130F00646	PRESSURE SWITCH (M3)		
0130F00647	PRESSURE SWITCH (M1, M2)		
0130F00644	PRESSURE SWITCH (M2)		
0130F00643	PRESSURE SWITCH (M1)		
0130F00443	SWITCH, PRESSURE (M6, M8)		
0130F00434	SWITCH, PRESSURE (M7)		

SPECIAL PARTS

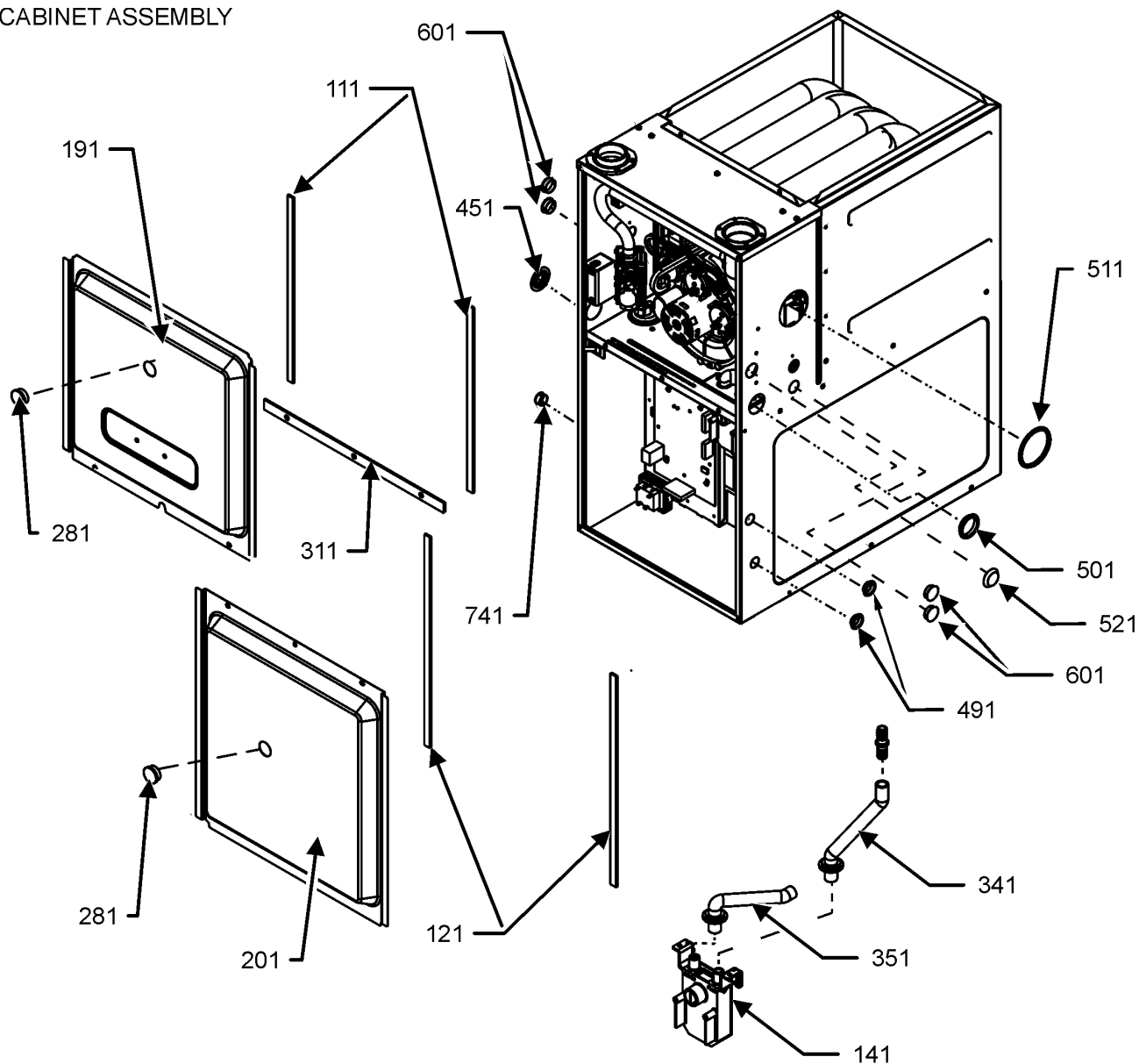
0161F00086 NAMEPLATE, GOODMAN

Expanded Model Nomenclature

M1 - GR9T960303ANAA
M2 - GR9T960403ANAA
M3 - GR9T960603ANAA
M4 - GR9T960603BNAA
M5 - GR9T960803BNAA
M6 - GR9T960804CNAA
M7 - GR9T961004CNAA
M8 - GR9T961005CNAA
M9 - GR9T961205DNAA

Cabinet Assembly

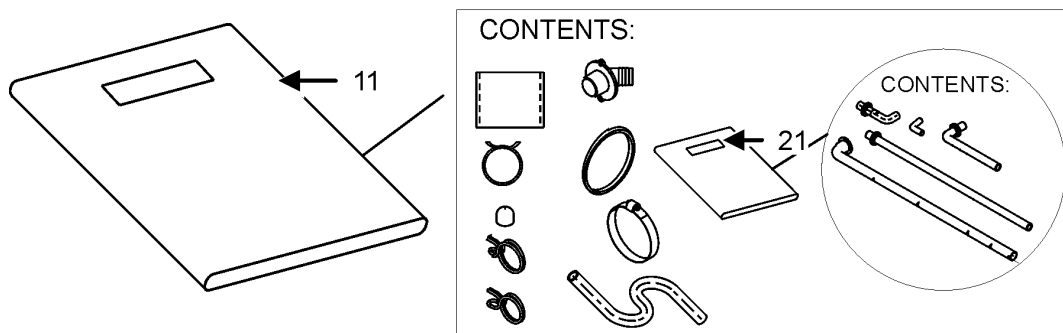
CABINET ASSEMBLY



CABINET ASSEMBLY MAY DIFFER FROM WHAT IS SHOWN

DRAIN TRAP ASSEMBLY

DRAIN KIT ASSEMBLY



Cabinet Assembly

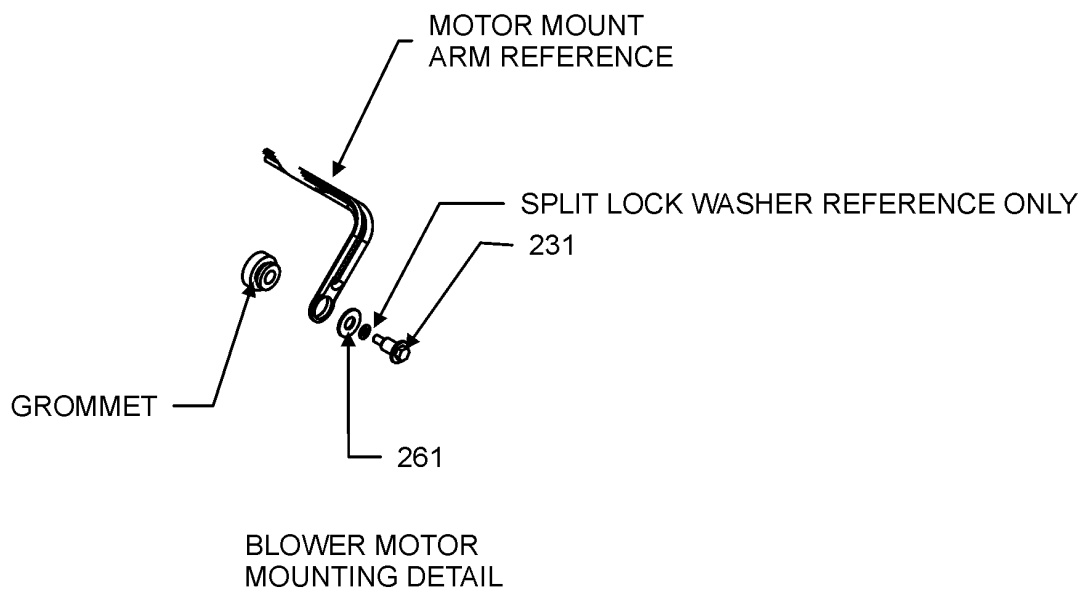
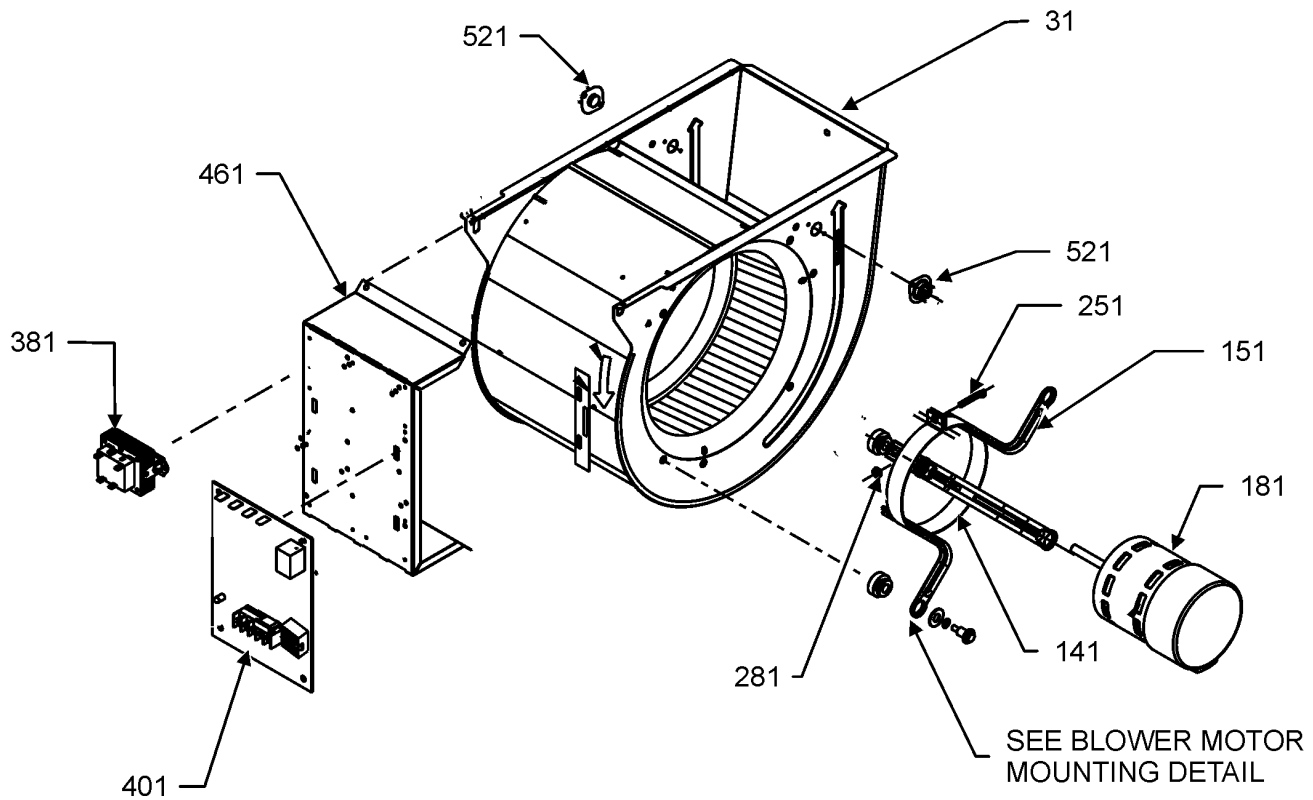
Ref. Part No: No:	Description:	Ref. Part No: No:	Description:
Image 1:			
11	0270F05402		DRAIN KIT ASSY
21	0270F05402		DRAIN KIT ASSY
111	0154F00024		GASKET (QTY 2)
121	0154F00025		GASKET (QTY 2)
141	0161F00046		DRAIN TRAP
191	0121F00291DG		DOOR, ACCESS 17.5 PNT (M4, M5)
191	0121F00292DG		DOOR, ACCESS 21 PNT (M6, M7, M8)
191	0121F00293DG		DOOR, ACCESS 24.5 PNT (M9)
191	0121F00674DG		PNT, DOOR, ACCESS 14" (M1, M2, M3)
201	0121F00288DG		DOOR, BLOWER 17.5 PNT (M4, M5)
201	0121F00289DG		DOOR, BLOWER 21 PNT (M6, M7, M8)
201	0121F00290DG		DOOR, BLOWER 24.5 PNT (M9)
201	0121F00672DG		PNT, DOOR, BLOWER 14" (M1, M2, M3)
281	B1392139		VIEW PORT BUSHING (QTY 2)
311	0154F00020		GASKET, DECK (M4, M5)
311	0154F00021		GASKET, DECK (M6, M7, M8)
311	0154F00022		GASKET, DECK (M9)
311	0154F00063		GASKET, DECK (M1, M2, M3)
341	0164F00017		HOSE-ELBOW/TRAP
351	0164F00020		DRAIN HOSE (M1, M2, M3)
351	0164F00006		HOSE, COVER/TRAP (M9)
351	0164F00024		HOSE, COVER/TRAP (M4, M5, M6, M7, M8)
451	M0501301		PIPE GROMMET
491	M0570808		BUTTON PLUG (QTY 3)
501	M0570806		BUTTON PLUG
511	M0570807		BUTTON PLUG
521	0161M00027		HOLE PLUG
601	B1392021		PLASTIC PLUG, 1" (2713-BLK) (QTY 4)
611	0163M00460		CLAMP-HOSE (QTY 2)
741	B1392104		UNIVERSAL BUSHING UB 875
NS	M0310345		BUTTON PLUG (QTY 2)
NS	M0570807		BUTTON PLUG
NS	M0209730		DECORATIVE SCREW (QTY 3)
NS	0154F00041		FRESH AIR GASKET
NS	0154F00065		GASKET (M1, M2, M3)
NS	20179307		GASKET (M9)
NS	20179309		GASKET (M4, M5)
NS	20179310		GASKET (M6, M7, M8)
NS	0163M00319		HEX NUT INSERT (QTY 3)
NS	0161F00086		NAMEPLATE, GOODMAN
NS	M0273904		RETAINER SCREW (QTY 3)

Expanded Model Nomenclature

M1 - GR9T960303ANAA
M2 - GR9T960403ANAA
M3 - GR9T960603ANAA
M4 - GR9T960603BNAA
M5 - GR9T960803BNAA
M6 - GR9T960804CNAA
M7 - GR9T961004CNAA
M8 - GR9T961005CNAA
M9 - GR9T961205DNAA

Blower Assembly

BLOWER ASSEMBLY



BLOWER ASSEMBLY MAY DIFFER FROM WHAT IS SHOWN

Blower Assembly

Ref. Part No: No:	Description:	Ref. Part No: No:	Description:
Image 1:			
31	0271F00607		BLOWER SHELL & WHEEL ASSY (M1, M2, M3)
31	0271F00507		MORRISON 11 X 10 BLOWER (M6, M7, M8)
31	0271F00508		MORRISON 11 X 11 BLOWER (M9)
31	0271F00506		MORRISON 11 X 8 BLOWER (M4, M5)
141	0121M00039		MOUNT BAND, MOTOR (HEAVY DUTY)
151	0163M00538		MOUNT ARM, MOTOR (QTY 3)
181	0131F00333M		MOTOR 1 HP W/O CONTROLLER (M6)
181	0131F00334M		MOTOR 1 HP W/O CONTROLLER (M7, M8, M9)
181	0131F00332M		MOTOR 1/2 HP W/O CONTROLLER (M1, M2, M3, M4, M5)
181	0131F00232		MOTOR PROGRAM (M1)
181	0131F00233		MOTOR PROGRAM (M2)
181	0131F00234		MOTOR PROGRAM (M3)
181	0131F00235		MOTOR PROGRAM (M4)
181	0131F00236		MOTOR PROGRAM (M5)
181	0131F00237		MOTOR PROGRAM (M6)
181	0131F00238		MOTOR PROGRAM (M7)
181	0131F00239		MOTOR PROGRAM (M8)
181	0131F00240		MOTOR PROGRAM (M9)
231	M0250565		TC SCREW 1.25" (QTY 3)
251	0163M00320		HEX HEAD ALL THREAD TAP BOLT
261	B1392918		FLAT WASHER (QTY 3)
281	B1393800		LOCKNUT, NYLON, INSERT 1/4, 20
381	0130M00140		TRANSFORMER, 120V TO 24V, 40VA
401	PCBBF302V010		PCB, CIRCUIT BOARD
461	0121F00802		MOUNTING PANEL, CONTROLS
521	0130F00038		AUX LIMIT - LT BLUE 120° (QTY 2)
NS	B1392021		1" PLASTIC PLUG (QTY 4)
NS	0159F00160		CTM, MOTOR HARNESS
NS	0259F00024		HARNESS - BLOWER
NS	M0282015		KEPS NUT (M7, M8, M9)
NS	0163M00279		SCREW #6 X .375 SELF DRILL (M7, M8, M9)
NS	B1392820		SLIT LOCK WASHER (M7, M8, M9)

Expanded Model Nomenclature

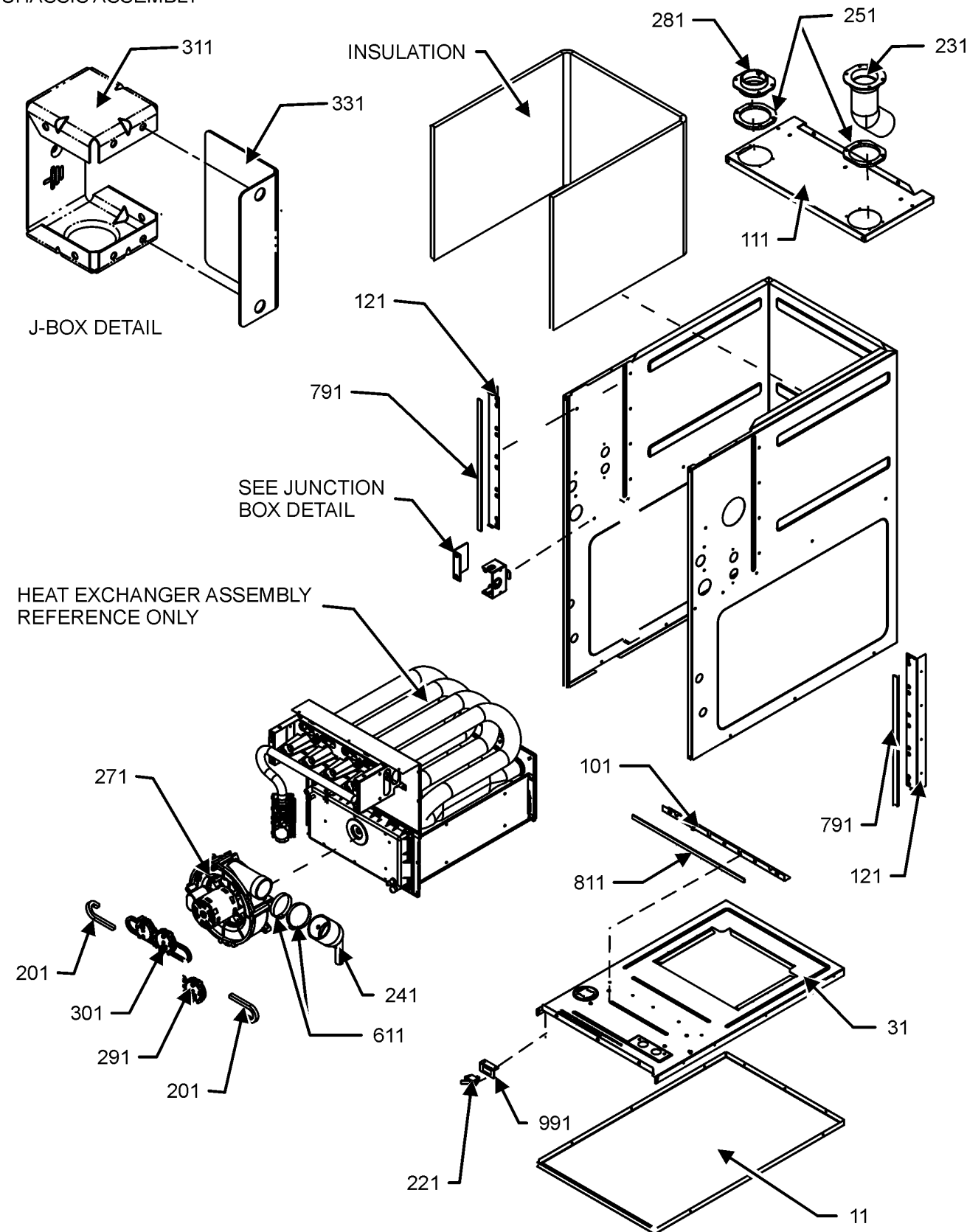
M1 - GR9T960303ANAA
M2 - GR9T960403ANAA
M3 - GR9T960603ANAA
M4 - GR9T960603BNAA
M5 - GR9T960803BNAA
M6 - GR9T960804CNAA
M7 - GR9T961004CNAA
M8 - GR9T961005CNAA
M9 - GR9T961205DNAA

To replace the Shaft end of motor order:

0131F00332M	MOTOR 1/2 HP W/O CONTROLLER
0131F00333M	MOTOR 3/4 HP W/O CONTROLLER
0131F00334M	MOTOR 1 HP W/O CONTROLLER

Chassis Assembly

CHASSIS ASSEMBLY



CHASSIS ASSEMBLY MAY DIFFER FROM WHAT IS SHOWN

Chassis Assembly

Ref. Part

No: No:

Description:

Ref. Part

No: No:

Description:

Image 1:

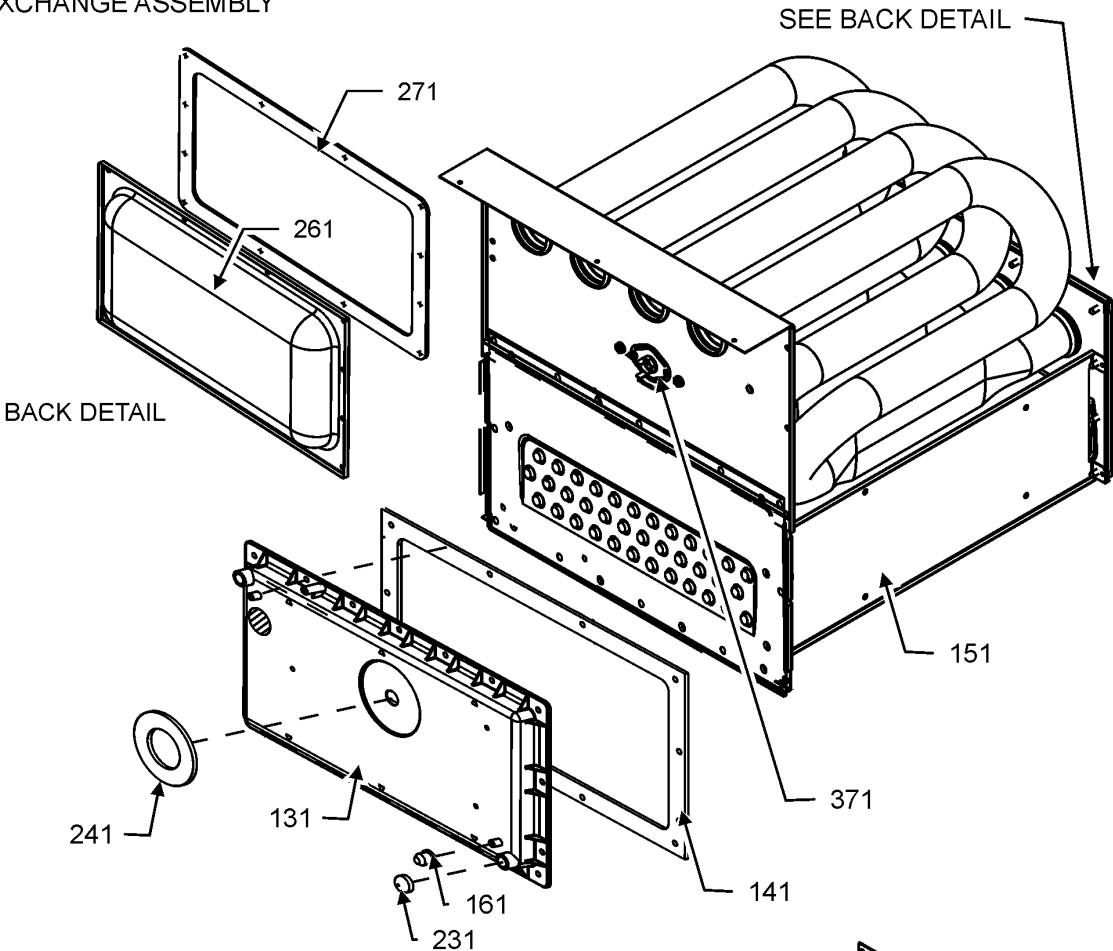
11	0121F00530DG	BASEPAN, 17.5 PNT (M4, M5)
11	0121F00531DG	BASEPAN, 21 PNT (M6, M7, M8)
11	0121F00532DG	BASEPAN, 24.5 PNT (M9)
11	0121F00664DG	BASEPAN, 14 PNT (M1, M2, M3)
31	0121F00766	DECK- BLOWER 17.5" (M4, M5)
31	0121F00767	DECK- BLOWER 21" (M6, M7, M8)
31	0121F00768	DECK- BLOWER 24.5" (M9)
31	0121F00663	DECK, BLOWER 14" (M1, M2, M3)
101	0121F00314	ANGLE, DECK (M4, M5)
101	0121F00315	ANGLE, DECK (M6, M7, M8)
101	0121F00316	ANGLE, DECK (M9)
101	0121F00661	ANGLE, DECK (M1, M2, M3)
111	0121F00279DG	PAINTED TOP, FURNACE 17.5 (M4, M5)
111	0121F00280DG	PAINTED TOP, FURNACE 21 (M6, M7, M8)
111	0121F00281DG	PAINTED TOP, FURNACE 24.5 (M9)
111	0121F00662DG	PNT, FURNACE TOP 14" (M1, M2, M3)
121	0121F00313	SIDE ANGLE (QTY 2)
201	0164M00121	HOSE- PRESSURE SW 16" (M1, M2, M3)
201	0164M00115	HOSE- PRESSURE SW 6" (M4, M5, M6, M7, M8, M9)
201	0164M00116	HOSE- PRESSURE SW 7" (M1, M2, M3)
221	10690402	SWITCH-INTERLOCK
231	0164F00002	FLUE PIPE W/BEND
241	0164F00025	ELBOW-FLUE,UPFLOW
251	0154F00041	FRESH AIR GASKET
271	0171M00002	MOTOR-ID, BLOWER (M4, M5, M6, M7, M8, M9)
281	0161F00037	COUPLING
291	0130F00429	PRESSURE SWITCH (M4, M5, M6, M7, M8, M9)
291	0130F00646	PRESSURE SWITCH (M3)
291	0130F00647	PRESSURE SWITCH (M1, M2)
301	0130F00643	PRESSURE SWITCH (M1)
301	0130F00644	PRESSURE SWITCH (M2)
301	0130F00645	PRESSURE SWITCH (M3)
301	0130F00434	SWITCH, PRESSURE (M7)
301	0130F00435	SWITCH, PRESSURE (M4)
301	0130F00436	SWITCH, PRESSURE (M5)
301	0130F00443	SWITCH, PRESSURE (M6, M8)
301	0130F00445	SWITCH, PRESSURE (M9)
311	0121F20060	BOX, JUNCTION 90%
331	0121F20061	BOX, JUNCTION 80%
611	0163M00460	CLAMP-HOSE (QTY 2)
701	M0326804	TUBE PLUG
791	0154F00015	GASKET (QTY 2)
811	0154F00014	GASKET (M4, M5)
811	0154F00016	GASKET (M6, M7, M8)
811	0154F00064	GASKET (M1, M2, M3)
811	20194607	GASKET (M9)
991	0121F00389	BRACKET, DOOR SWITCH
NS	0160F00025	INSULATION, HT EXCHANGER (M1, M2, M3)
NS	0160F00015	INSULATION, HT EXCHANGER 17.5" (M4, M5)
NS	0160F00016	INSULATION, HT EXCHANGER 21" (M6, M7, M8)
NS	0160F00017	INSULATION, HT EXCHANGER 24.5" (M9)
NS	0159F20018	WIRE HARNESS (M3, M4, M5, M6, M7, M8, M9)
NS	0159F20021	WIRE HARNESS (M1, M2)

Expanded Model Nomenclature

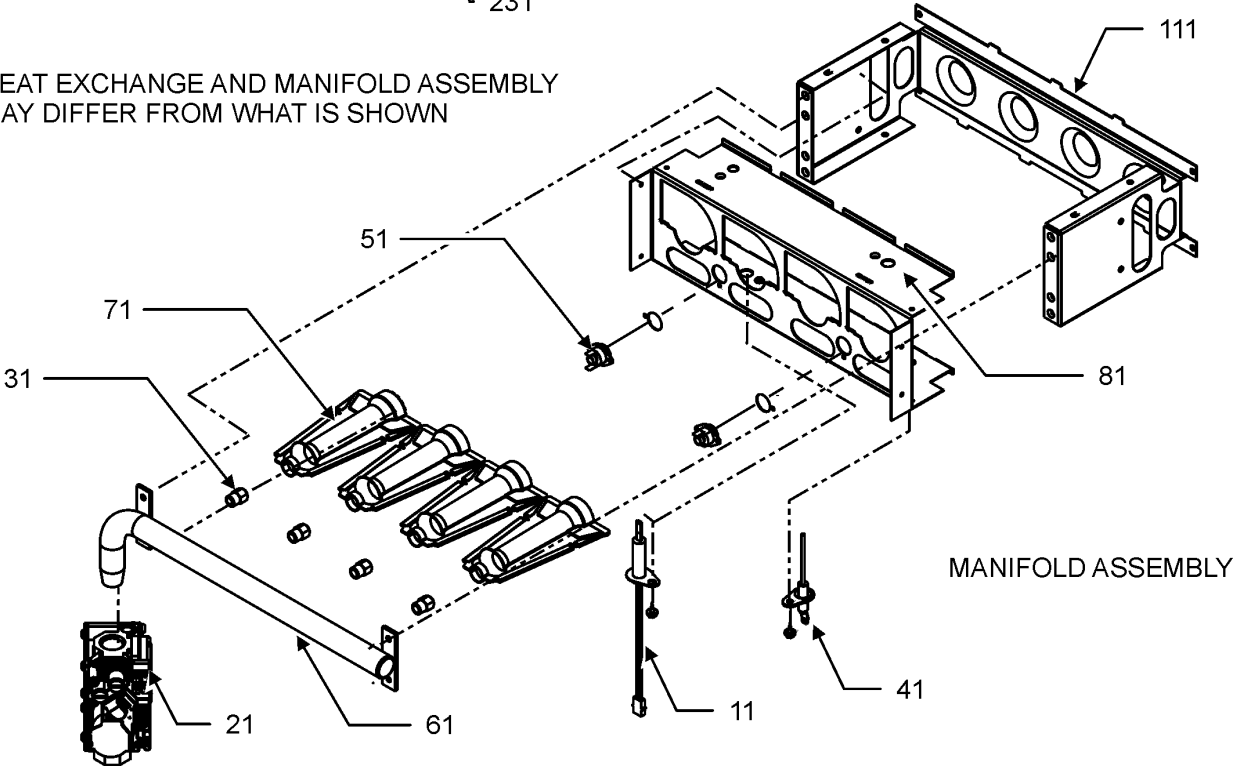
M1 - GR9T960303ANAA
M2 - GR9T960403ANAA
M3 - GR9T960603ANAA
M4 - GR9T960603BNAA
M5 - GR9T960803BNAA
M6 - GR9T960804CNAA
M7 - GR9T961004CNAA
M8 - GR9T961005CNAA
M9 - GR9T961205DNAA

Heat Exchange and Manifold Assembly

HEAT EXCHANGE ASSEMBLY



HEAT EXCHANGE AND MANIFOLD ASSEMBLY
MAY DIFFER FROM WHAT IS SHOWN



Heat Exchange and Manifold Assembly

Ref. Part No: No:	Description:	Ref. Part No: No:	Description:
Image 1:		Image 1:	
11	0130F00008	IGNITOR-SINI 17 SEC	
21	0151M00027	GAS VALVE	
31	0163F00019	ORIFICE (M1)	
31	10716005	ORIFICE (M2, M3, M4, M5, M6, M7, M8, M9)	
41	0130F00010	FLAME SENSOR	
51	0130F00123	LIMIT, RESET MAN (M5)	
51	10123538	LIMIT-MAN-LIGHT GREEN (M1, M2)	
51	10123527	LIMIT-RESET MAN-BROWN (M9)	
51	10123534	LIMIT-RESET MAN-ORANGE (M7, M8)	
51	10123539	LIMIT-RESET MAN-ORANGE (M4, M6)	
51	10123517	LIMIT-RESET MAN-WHITE (M3)	
61	0163F00007	MANIFOLD (M1, M2)	
61	0163F00008	MANIFOLD (M4)	
61	0163F00009	MANIFOLD (M6)	
61	0163F00010	MANIFOLD (M7, M8)	
61	0163F00011	MANIFOLD (M9)	
61	0163F00014	MANIFOLD (M5)	
61	0163F00037	MANIFOLD, 3B (M3)	
71	0163F00017	BECKETT BURNER (QTY 2)	
81	0121F00456	BRACKET-BURNER 2 (M1, M2)	
81	0121F00455	BRACKET-BURNER 3 (M3, M4)	
81	0121F00454	BRACKET-BURNER 4 (M5, M6)	
81	0121F00453	BRACKET-BURNER 5 (M7, M8)	
81	0121F00451	BRACKET-BURNER 6 (M9)	
111	0121F00469	ORIFICE BRACKET-BURNER 2 (M1, M2)	
111	0121F00468	ORIFICE BRACKET-BURNER 3 (M3, M4)	
111	0121F00467	ORIFICE BRACKET-BURNER 4 (M5, M6)	
111	0121F00466	ORIFICE BRACKET-BURNER 5 (M7, M8)	
111	0121F00465	ORIFICE BRACKET-BURNER 6 (M9)	
131	0161F00072	COVER FRONT (M8)	
131	0161F00024	COVER, FRONT (M5)	
131	0161F00030	COVER, FRONT (M6)	
131	0161F00054	COVER, FRONT (M4)	
131	0161F00063	COVER, FRONT (M9)	
131	0161F00081	COVER, FRONT (M1)	
131	0161F00082	COVER, FRONT (M2)	
131	0161F00083	COVER, FRONT (M3)	
131	0161F00065	COVER,FRONT (M7)	
141	0154F00026	GASKET FRONT COVER (M4, M5)	
141	0154F00030	GASKET FRONT COVER (M6, M7, M8)	
141	0154F00034	GASKET FRONT COVER (M9)	
141	0154F00059	GASKET FRONT COVER	
141	0154F00059	GASKET FRONT COVER	
141	0154F00059	GASKET FRONT COVER	
141	0154F00062	GASKET FRONT COVER (M1, M2, M3)	
151	0257F20131	HEAT EXCHANGER ASSY (M4)	
151	0257F20132	HEAT EXCHANGER ASSY (M5)	
151	0257F20133	HEAT EXCHANGER ASSY (M6)	
151	0257F20139	HEAT EXCHANGER ASSY (M9)	
151	0257F20144	HEAT EXCHANGER ASSY (M1)	
151	0257F20145	HEAT EXCHANGER ASSY (M2)	
151	0257F20146	HEAT EXCHANGER ASSY (M3)	
151	0257F20147	HEAT EXCHANGER ASSY (M7)	
151	0257F20148	HEAT EXCHANGER ASSY (M8)	
161	M0326804	TUBE PLUG	
231	A1781105	CAP-VINYL .500	
241	0154F00043	GASKET ID BLOWER	
261	0121F00317	COVER, REAR (M4, M5)	
261	0121F00318	COVER, REAR (M6, M7, M8)	
261	0121F00319	COVER, REAR (M9)	
261	0121F00670	COVER, REAR (M1, M2, M3)	
271	0154F00058	GASKET REAR CVR (M1, M2, M3)	
271	0154F00037	GASKET, REAR CVR (M4, M5)	
271	0154F00038	GASKET, REAR CVR (M6, M7, M8)	
271	0154F00039	GASKET, REAR CVR (M9)	
371	0130F00036	LIMIT, PRIMARY (M9)	
371	20162903	LIMIT, PRIMARY (M1, M2, M3, M8)	
371	20162904	LIMIT, PRIMARY (M5, M6)	
371	20162906	LIMIT, PRIMARY (M4, M7)	
NS	0154F00041	GASKET FRESH AIR	
NS	0121F00582	INSULATION, RETAINER (M1, M2, M3)	
NS	0121F00583	INSULATION, RETAINER (M4, M5)	
NS	0121F00584	INSULATION, RETAINER (M6, M7, M8)	
NS	0121F00585	INSULATION, RETAINER (M9)	
NS	0121F00439	PRIMARY LIMIT-HEAT SHIELD	
NS	0121F00540	SHEILD, BURNER (M4)	
NS	0121F00541	SHEILD, BURNER (M5, M6)	
NS	0121F00542	SHEILD, BURNER (M7, M8)	
NS	0121F00543	SHEILD, BURNER (M9)	
NS	0121F00758	SHEILD, BURNER (M3)	
NS	0121F00755	SHIELD, BURNER (M1, M2)	
NS	0121F00355	SHIELD, COIL (QTY 2)	
		Expanded Model Nomenclature	
		M1 - GR9T960303ANAA	
		M2 - GR9T960403ANAA	
		M3 - GR9T960603ANAA	
		M4 - GR9T960603BNAA	
		M5 - GR9T960803BNAA	
		M6 - GR9T960804CNAA	
		M7 - GR9T961004CNAA	
		M8 - GR9T961005CNAA	
		M9 - GR9T961205DNAA	