



A CSW Industrials Company

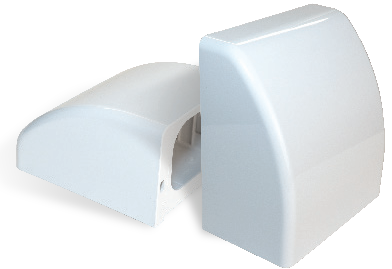
## PRODUCT DATA SHEET

### LINEGATE™

AC Cover – Wall Mounted Outlet

#### Description

LineGate AC Lineset Entry Point Covers protect your air system's entry point and linesets from harsh weather conditions, pests, and other outdoor elements. Sleek and easy to install, it can accommodate traditional and mini-split systems. Available in 4" and 5-5/8" in White.



#### Applications

Conceals and protects exposed HVAC lineset entry point from weather and pest damage.

#### Recommended Use

For HVAC lineset entry points of air systems.

#### Characteristics | Features

- **EASE OF USE:** Installs in 3 easy steps. The base splits apart for quick wall mounting around the HVAC lineset entry point, and the cover attaches with a simple snap for snug protection.
- **DURABLE:** Constructed of high-grade PVC and fire retardant, it's weather-resistant and UV-stabilized with a temperature range of -4°F to 140°F (-20°C to 60°C).
- **VERSATILE:** Sleek and aesthetically pleasing, hide and protect your entry point from pests and the elements. Compatible with the Slimduct SD Flexible ELL for full coverage protection.
- **EASY MAINTENANCE:** Its snap-on cover helps prolong the life of your system's equipment while allowing easy repair access.

#### Packaging

Code	Size	Qty. per Case	Lbs. per Case	Cubic Feet per Case
IHM100W (74950)	4"	1	1	0.06
IHM140W (74951)	5-5/8"	1	1	0.13

#### Installation

1. Push the clip inward to remove the base.
2. Assemble the base, and then fix it on the wall with screws. Apply caulking or putty to seal.
3. Fix the cover on before the caulking material hardens.

#### Limited Warranty



For more information on our product warranty, visit [rectorseal.com](http://rectorseal.com).

Manufactured by

**RectorSeal® LLC**

**2601 Spenwick Drive • Houston, TX 77055, USA • 800-231-3345 • Fax 800-441-0051 • [rectorseal.com](http://rectorseal.com)**  
**3255 Wyandotte St. East • Windsor, ON N8Y 1E9, Canada • 519-966-4901**

A CSW Industrials Company. RectorSeal, the logos and other trademarks are property of RectorSeal, LLC, its affiliates or its licensor's and are protected by copyright, trademark and other intellectual property laws, and may not be used without permission. RectorSeal reserves the right to change specifications without prior notice. ©2024 RectorSeal. All rights reserved. R51084-0924