

DIFFERENTIAL PRESSURE SWITCHES

2374 SERIES AIR SWITCHES

The 2374 Series Differential Pressure Switches are sensitive and reliable devices for remotely sensing the operation of fans and blowers associated with ducted ventilation systems. They can also be used for sensing static pressure drop across filters.

Pressure differentials as small as .05" W.C. are sufficient to actuate the contacts which in turn, operate various devices including electronic air cleaners, remote status indicators, alarms and control circuits.

The switches are field adjustable and are relatively insensitive to temperature change. They may be used to sense positive, negative or differential air pressure.

SPECIFICATIONS

Electrical rating	300 VA @ 115/277 VAC pilot duty 15 amps noninductive to 277 VAC
Control set point	field adjustable
Differential	±.02 W.C. with a slight increase at higher operating pressures
Maximum pressure	.5 psig
Operating position	diaphragm vertical
Conduit opening	7/8" dia. for 1/2" conduit
Electrical connections	screw terminals with cup washers
Pressure sampling line connections	1/4" O.D. rigid or semirigid tubing
Ambient temperature limits	-40°F to 180°F

ORDERING DATA

UNI-LINE ORDER NO.	FACTORY NO.	SWITCH	SET POINT RANGE	COMMENTS
2374-410	AFS-222	SPDT (N.C.)	.05" TO 12.0" WC	*
2374-411	AFS-460	SPST (N.C.)	.05" TO 12.0" WC	MANUAL RESET MODEL
2374-412	AFS-262	SPDT (N.C.)	.05" TO 2.0" WC	

*Replaces White-Rodgers 770-1, Cemco Rlitt 3, Dayton 2E462, Johnson P32 series & Landis G4R 141-0518 & 141-0575 switches.

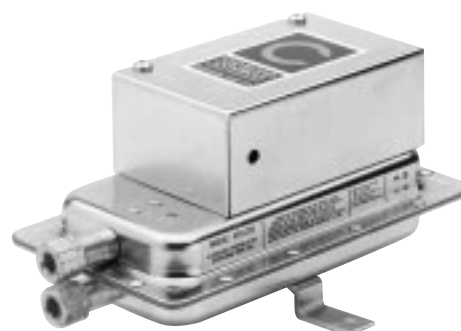
2374 SERIES ADJUSTABLE AIR SENSING SWITCHES

The new 2374 Series Adjustable Air Sensing Switches are designed to replace a wide variety of air-sensing switches found in residential and light commercial applications including - furnaces, electronic air cleaners and humidifiers. Two models are currently available with an adjustable range of .2" W.C. to 1.0" W.C. or 1.0" W.C. to 4.0" W.C. Both models are provided with an SPDT switch that can be actuated by positive or negative pressure, or by pressure differential.

Highly accurate, these switches are practically insensitive to temperature change with an operating temperature range of -40°F to 190°F (-40° to 88°C). They are U.L. and C.S.A. approved for aftermarket applications. Each switch is provided with mounting hardware and an adjustment tool for easy installation and calibration.

ORDERING DATA

UNI-LINE ORDER NO.	SET POINT RANGE	SWITCH
2374-495	.25 TO 1.0" W.C.	SPDT
2374-498	1.0 TO 4.0" W.C.	



2374-410



2374-411

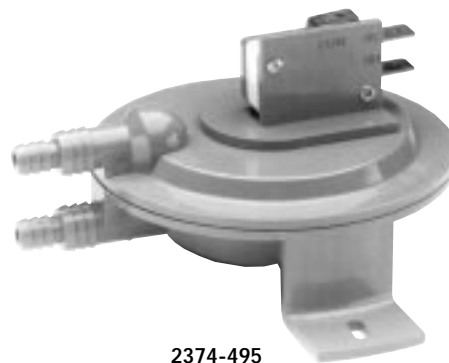
Agency Approvals



File No. MH6213



File No. LR18754



2374-495

SPECIFICATIONS

Electrical rating	5 amp noninductive 120-277 VAC 5 amp noninductive 28 VDC 1 amp pilot duty 120 VA
Control set point	field adjustable (see order chart)
Maximum pressure	.5 PSI
Ambient temperature	-40°F to 190°F (-40° to 88°C)
Operating (mounting position)	diaphragm vertical
Switch	SPDT
Electrical connections	1/4" spade
Air sample line connectors	will accept 1/8", 1/4" or 3/8" tubing