

CITY MULTI® VRF SYSTEM PIPE ACCESSORIES



Job Name:

System Reference:

Date:

Pipe Accessories			
Model Number	Compatible Model	Capacity (BTU/H)	Branches
Twinning Kits			
CMY-Y100CBK3	Y-Series Air Source N-Generation	-	-
CMY-Y300CBK2	Y-Series Air Source N-Generation	-	-
CMY-R200NCBK	R2-Series Air Source N-Generation	-	-
CMY-R300NCBK	R2-Series Air Source N-Generation	-	-
CMY-Y300VBK3	For Non UL TKA Models	-	-
CMY-Y200CBK2	Outdoors Only	-	-
CMY-Y200VBK2	PUHY-P750-900: 28-36HP	-	-
CMY-Q100CBK2	W2 MODULAR OUTDOOR	-	-
CMY-Q200CBK	W2 MODULAR OUTDOOR	-	-
CMY-R100NCBK	PURY-HP144Y/TSNU-A	-	-
CMY-ER200CBK	PURY-T/YLMU	-	-
CMY-Y100VBK3	For PUHY	-	-
CMY-R320C-J	Pipe Kit	-	-
Joint Kits			
CMY-Y102SS-G2	R2/Y-Series Air Source N-Generation	≤ 72,000	-
CMY-Y102LS-G2	Y-Series Air Source N-Generation	73,000 - 144,000	-
CMY-Y202S-G2	Y-Series Air Source N-Generation	145,000 - 234,000	-
CMY-Y302S-G2	Y-Series Air Source N-Generation	≥ 235,000	-
CMY-Y102LS-G2	R2-Series Air Source N-Generation	≤ 72,000	-
CMY-Y202S-G2	R2-Series Air Source N-Generation	≤ 192,000	-
CMY-R302S-G1	R2-Series Air Source N-Generation	≤ 72,000	-
CMY-R303S-G1	R2-Series Air Source N-Generation	≤ 72,000	-
CMY-R304S-G1	R2-Series Air Source N-Generation	≤ 72,000	-
CMY-R305S-G1	R2-Series Air Source N-Generation	≤ 72,000	-
CMY-R201S-G	R2-Series Air Source N-Generation	≤ 72,000	-
CMY-R202S-G	R2-Series Air Source N-Generation	≤ 72,000	-
CMY-R203S-G	R2-Series Air Source N-Generation	≤ 72,000	-
CMY-R204S-G	R2-Series Air Source N-Generation	≤ 72,000	-
CMY-R205S-G	R2-Series Air Source N-Generation	≤ 72,000	-
CMY-R301S-G	R2-Series Air Source N-Generation	≤ 72,000	-
CMY-R306S-G	R2-Series Air Source N-Generation	≤ 72,000	-
CMY-Y62-G-E	S-Series Air Source	-	2
Header Kits			
CMY-Y64-G-E	S-Series Air Source 8-Branch	-	4
CMY-Y68-G-E	S-Series Air Source 4-Branch	-	8
CMY-Y104C-G	Y-Series Air Source N-Generation	≤ 72,000	4
CMY-Y108C-G	Y-Series Air Source N-Generation	≤ 144,000	8
CMY-Y1010C-G	Y-Series Air Source N-Generation	≤ 234,000	10
Joint Adapter Kit			
CMY-R160-J1	See Compatibility Chart below	-	-
Joint Adapter Kit Compatibility Chart			
Model Number	Compatible Chart	Quantity Required	
CMY-R160-J1	PEFY-P72NMHSU-E	1	
CMY-R160-J1	PEFY-P96NMHSU-E	1	
CMY-R160-J1	PEFY-AF1200CFM	2	
CMY-R160-J1	PEFY-AF1200CFMR	3	

CITY MULTI® VRF SYSTEM PIPE ACCESSORIES

TWINNING KIT COMPATIBILITY CHART		
Y-Series Air Source N-Generation		
Item Description	CMY-Y100CBK3	CMY-Y300CBK2
N-Generation Hyper-heating		
PUHY-HP144(T/Y)SNU-A	x	
PUHY-HP192(T/Y)SNU-A	x	
PUHY-HP240(T/Y)SNU-A	x	
N-Generation High Efficiency		
PUHY-EP192(T/Y)SNU-A(-BS)	x	
PUHY-EP216(T/Y)SNU-A(-BS)	x	
PUHY-EP240(T/Y)SNU-A(-BS)	x	
PUHY-EP264(T/Y)SNU-A(-BS)		x
PUHY-EP288(T/Y)SNU-A(-BS)		x
PUHY-EP312(T/Y)SNU-A(-BS)		x
PUHY-EP336(T/Y)SNU-A(-BS)		x
PUHY-EP360(T/Y)SNU-A(-BS)		x
PUHY-EP384(T/Y)SNU-A(-BS)		x
PUHY-EP408(T/Y)SNU-A(-BS)		x
PUHY-EP432(T/Y)SNU-A(-BS)		x
N-Generation Standard Efficiency		
PUHY-P192(T/Y)SNU-A(-BS)	x	
PUHY-P216(T/Y)SNU-A(-BS)	x	
PUHY-P240(T/Y)SNU-A(-BS)	x	
PUHY-P264(T/Y)SNU-A(-BS)		x
PUHY-P288(T/Y)SNU-A(-BS)		x
PUHY-P312(T/Y)SNU-A(-BS)		x
PUHY-P336(T/Y)SNU-A(-BS)		x
PUHY-P360(T/Y)SNU-A(-BS)		x
PUHY-P384(T/Y)SNU-A(-BS)		x
PUHY-P408(T/Y)SNU-A(-BS)		x
PUHY-P432(T/Y)SNU-A(-BS)		x

CITY MULTI® VRF SYSTEM PIPE ACCESSORIES

TWINNING KIT COMPATIBILITY CHART

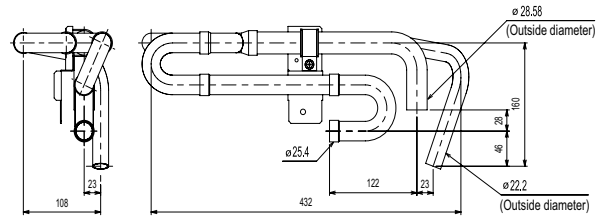
R2-Series Air Source N-Generation

Item Description	CMY-R200NCBK	CMY-R300NCBK
N-Generation Hyper-heating		
PURY-HP144(T/Y)SNU-A	x	
PURY-HP192(T/Y)SNU-A	x	
PURY-HP240(T/Y)SNU-A	x	
N-Generation High Efficiency		
PURY-EP216(T/Y)SNU-A(-BS)	x	
PURY-EP240(T/Y)SNU-A(-BS)	x	
PURY-EP264(T/Y)SNU-A(-BS)		x
PURY-EP288(T/Y)SNU-A(-BS)		x
PURY-EP312(T/Y)SNU-A(-BS)		x
PURY-EP336(T/Y)SNU-A(-BS)		x
PURY-EP384(T/Y)SNU-A(-BS)		x
PURY-EP432(T/Y)SNU-A(-BS)		x
N-Generation Standard Efficiency		
PURY-P192(T/Y)SNU-A(-BS)	x	
PURY-P216(T/Y)SNU-A(-BS)	x	
PURY-P240(T/Y)SNU-A(-BS)	x	
PURY-P264(T/Y)SNU-A(-BS)		x
PURY-P288(T/Y)SNU-A(-BS)		x
PURY-P312(T/Y)SNU-A(-BS)		x
PURY-P336(T/Y)SNU-A(-BS)		x

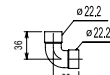
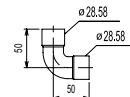
TWINNING KITS - DIMENSIONS

CMY-Q100CBK

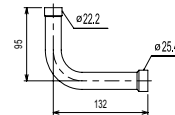
Low-pressure pipe twinning kit



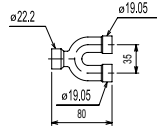
<Elbow pipe(Accessory)>



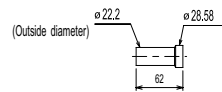
<Pipe for routing through the front (Accessory)>



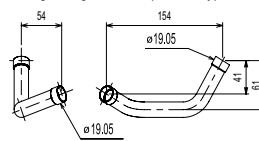
High-pressure twinning pipe



<Deformed pipe(Accessory)>



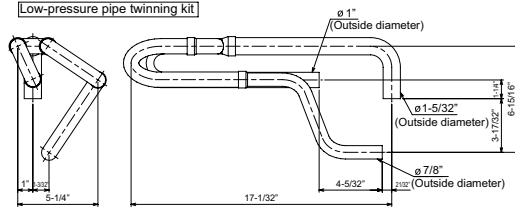
<Pipe for routing through the front (Accessory)>



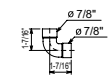
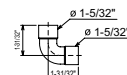
unit: mm

CMY-R100CBK2

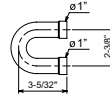
Low-pressure pipe twinning kit



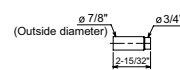
<Elbow pipe(Accessory)>



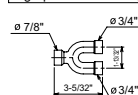
<Low-pressure pipe twinning kit(Accessory)>



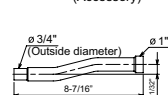
<Deformed pipe(Accessory)>



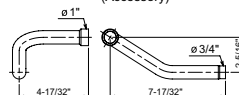
High-pressure twinning pipe



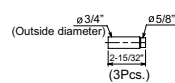
<Pipe for routing through the bottom (Accessory)>



<Pipe for routing through the front (Accessory)>



<Deformed pipe(Accessory)>



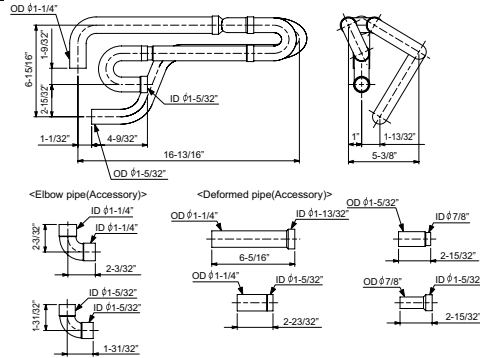
unit: inch

TWINNING KITS - DIMENSIONS

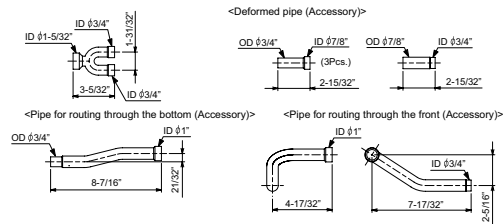
CMY-R100XLCBK

unit : inch

Low-pressure pipe twinning kit



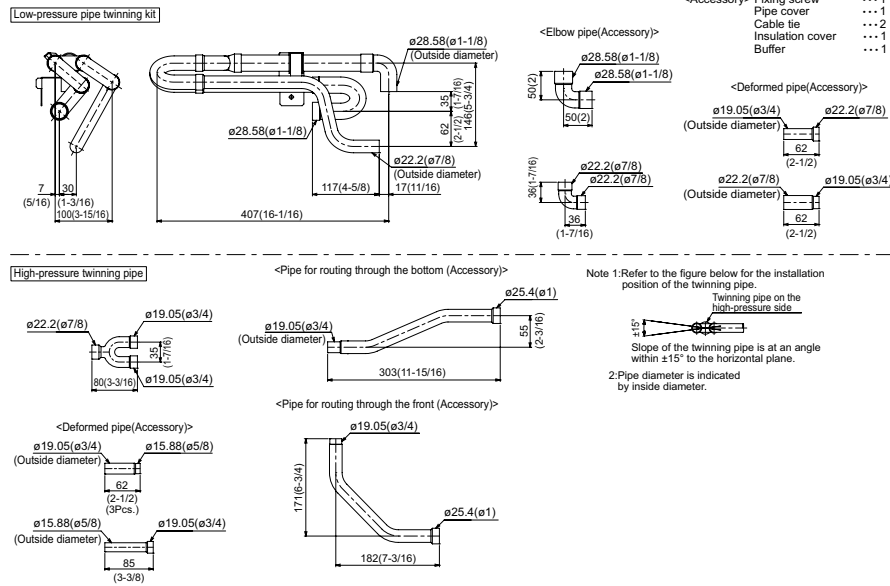
High-pressure twinning pipe



TWINNING KITS - DIMENSIONS

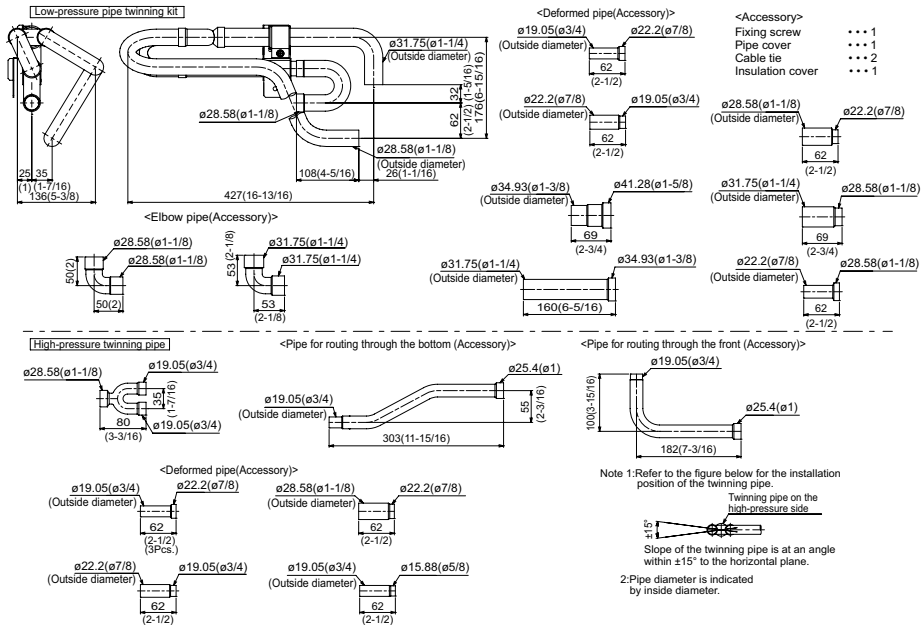
CMY-ER100CBK

Unit: mm (in.)



CMY-ER200CBK

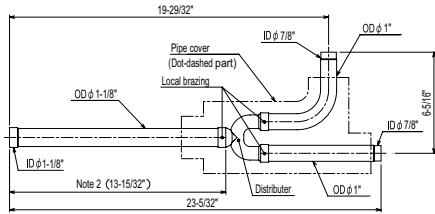
Unit: mm (in.)



TWINNING KITS - DIMENSIONS

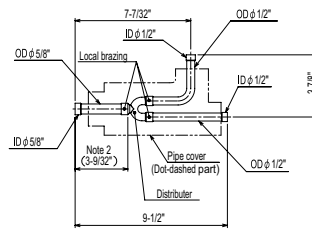
CMY-Y100CBK3

For Gas pipe:



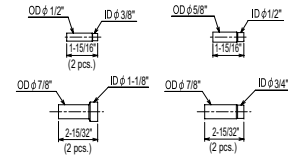
ID: Inner Diameter OD: Outer Diameter

For Liquid pipe:



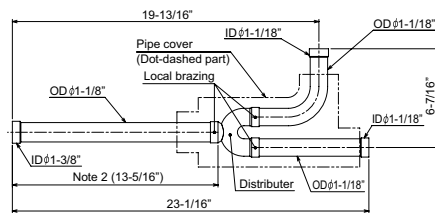
Ref.: CMY_Y100VBK2_EXD_EUDB_SI
in.

<Reducer(Accessory)>



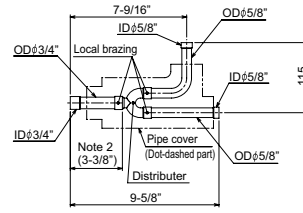
CMY-Y200CBK2

For Gas pipe:

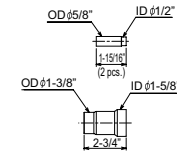


ID: Inner Diameter OD: Outer Diameter

For Liquid pipe:

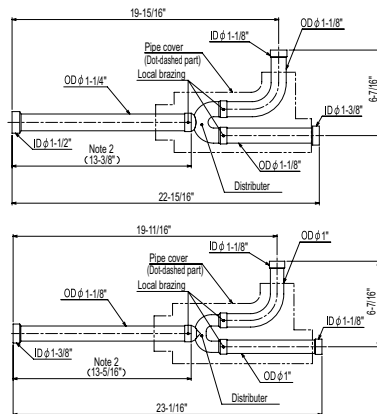


<Deformed pipe(Accessory)>



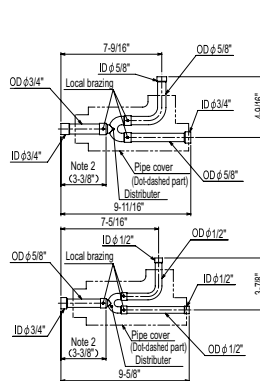
CMY-Y300CBK2

For Gas pipe:



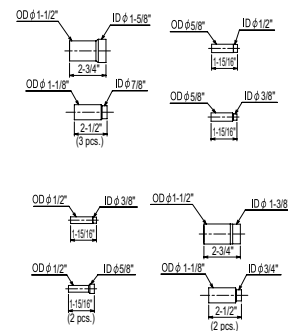
ID: Inner Diameter OD: Outer Diameter

For Liquid pipe:



Ref.: CMY_Y300VBK2_EXD_EUDB_SI
in.

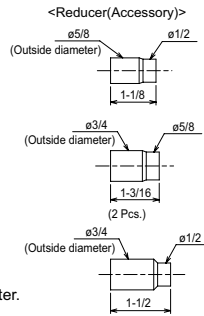
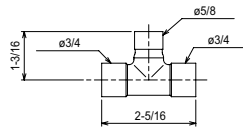
<Reducer(Accessory)>



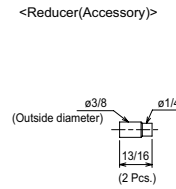
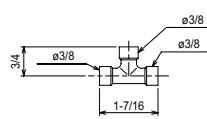
JOINT KITS - DIMENSIONS

CMY-Y102SS-G2

For Gas pipe:



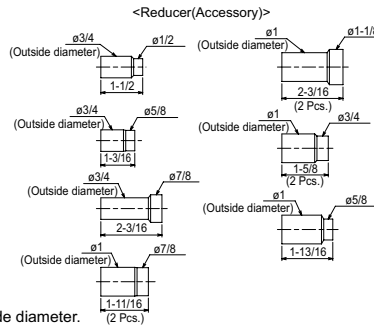
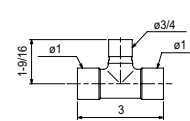
For Liquid pipe:



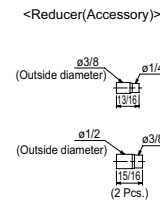
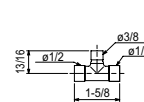
*Pipe diameter is indicated by inside diameter.

CMY-Y102LS-G2

For Gas pipe:



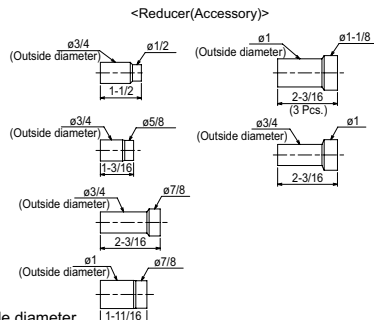
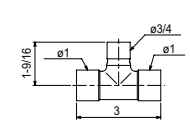
For Liquid pipe:



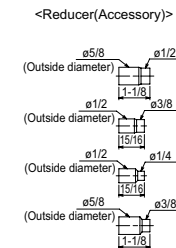
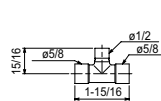
*Pipe diameter is indicated by inside diameter.

CMY-Y202S-G2

For Gas pipe:



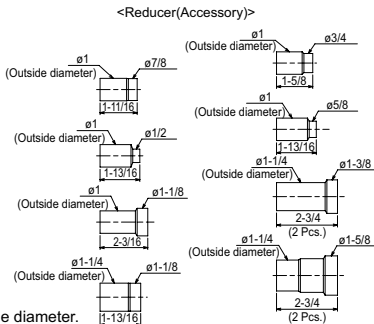
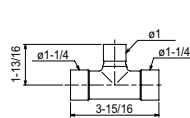
For Liquid pipe:



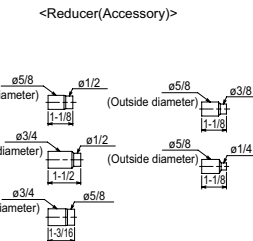
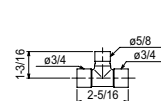
*Pipe diameter is indicated by inside diameter.

CMY-Y302S-G2

For Gas pipe:



For Liquid pipe:



*Pipe diameter is indicated by inside diameter.

1340 Satellite Boulevard, Suwanee, GA 30024
Toll Free: 800-433-4822 www.mehvac.com

JOINT KITS - DIMENSIONS

CMY-Y62-G

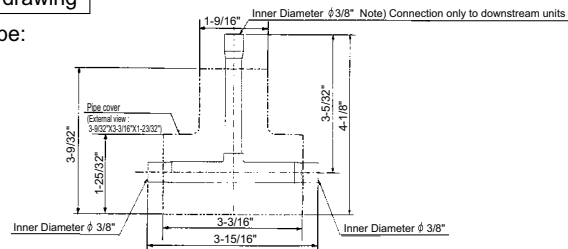
Ref.: 7FAGFA
in.

1. Specification

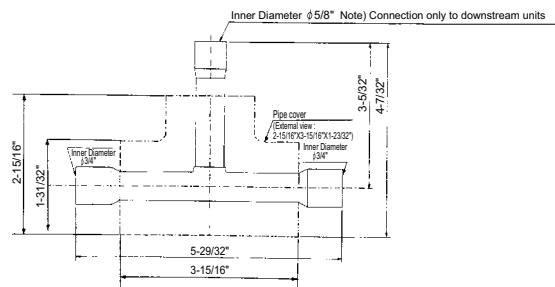
Items		Details
Main	Number of ports	2 ports
	Number of branch joints	One for each liquid and gas pipe
	Pipe material	Phosphorus deoxidized copper C1220T-OL (JIS H3300)
Accessory	Insulation material	Foamed polyethylene (one for each liquid and gas pipe)
	Reducer	10 reducers of 7 types (Refer to the external drawing for details.)

2. External drawing

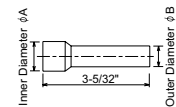
For liquid pipe:



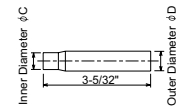
For gas pipe:



Reducer (Accessory):



A (Inner Diameter)	B (Outer Diameter)	Number of reducers
φ 1/2"	φ 3/8"	2
φ 3/4"	φ 5/8"	1
φ 7/8"	φ 3/4"	1



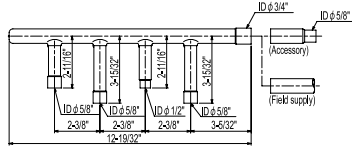
C (Inner Diameter)	D (Outer Diameter)	Number of reducers
ϕ 1/4"	ϕ 3/8"	2
ϕ 1/2"	ϕ 5/8"	1
ϕ 1/2"	ϕ 3/4"	1
ϕ 5/8"	ϕ 3/4"	2

HEADERS - DIMENSIONS

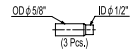
CMY-Y104C-G

Ref.: W901636
in.

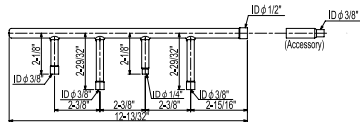
For gas pipe:



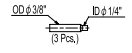
<Reducer(Accessory)>



For liquid pipe:



<Reducer(Accessory)>



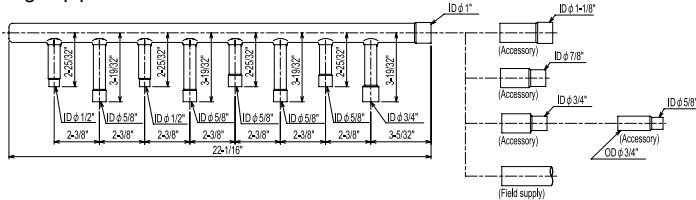
ID: Inner Diameter OD: Outer Diameter

NOTE: Besides above mentioned accessories, caps for $\phi 1/4"$, $\phi 3/8"$, $\phi 1/2"$, $\phi 5/8"$ pipes (each diameter 1 piece) are included in the Header set.

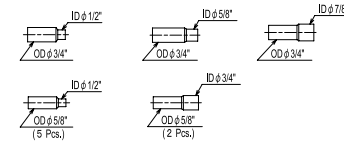
CMY-Y108C-G

Ref.: W901637
in.

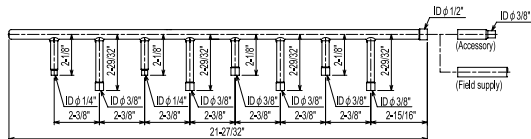
For gas pipe:



<Reducer(Accessory)>



For liquid pipe:



<Reducer(Accessory)>



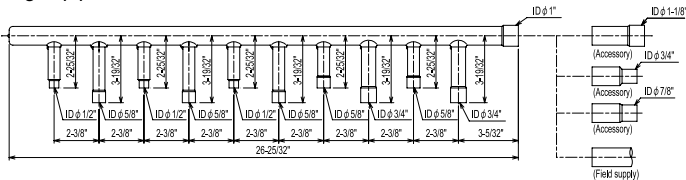
ID: Inner Diameter OD: Outer Diameter

NOTE: Besides above mentioned accessories, caps for $\phi 1/4"$, $\phi 3/8"$, $\phi 1/2"$, $\phi 5/8"$ pipes (each diameter 2 pieces) and 1 cap for $\phi 3/4"$ pipe are included in the Header set.

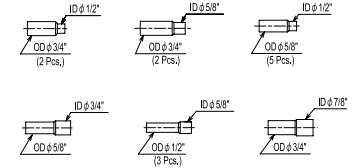
CMY-Y1010C-G

Ref.: W901638
in.

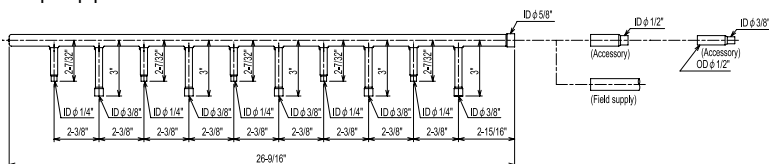
For gas pipe:



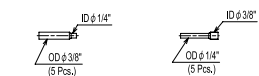
<Reducer(Accessory)>



For liquid pipe:



<Reducer(Accessory)>



ID: Inner Diameter OD: Outer Diameter

NOTE: Besides above mentioned accessories, caps for $\phi 1/4"$, $\phi 3/8"$, $\phi 1/2"$, $\phi 5/8"$ pipes (each diameter 2 pieces) and 1 cap for $\phi 3/4"$ pipe are included in the Header set.

HEADERS - DIMENSIONS

CMY-Y64-G

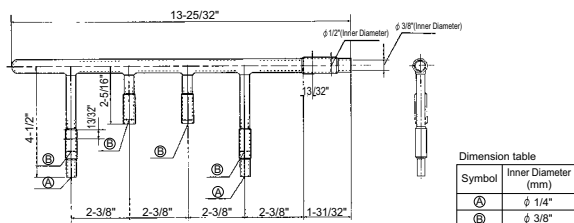
Ref.: 7FAGFB
in.

1. Specification

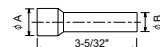
Items	Details
Main	Number of ports
	3 ~ 4 ports
	Number of branch joints
	One for each liquid and gas pipe
Accessory	Pipe material
	Phosphorus deoxidized copper C1220T-OL (JIS H3300)
	Insulation material
	Foamed polyethylene
Reducer	7 reducers of 5 types
	Cap
	2 caps of 2 different types for each liquid and gas pipe ; 4 caps in total

2. External drawing

For liquid pipe:

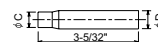
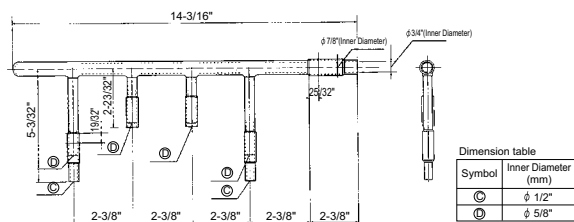


Reducer (Accessory):



A (Inner Diameter)	B (Outer Diameter)	Number of reducers
φ 3/4"	φ 5/8"	1
φ 5/8"	φ 1/2"	2
φ 3/8"	φ 1/4"	2

For gas pipe:



C (Inner Diameter)	D (Outer Diameter)	Number of reducers
φ 5/8"	φ 3/4"	1
φ 3/8"	φ 1/2"	1

CMY-Y68-G

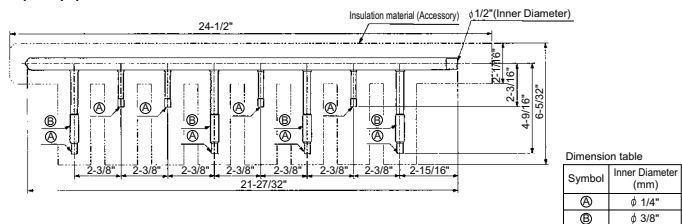
Ref.: 7FAGFC
in.

1. Specification

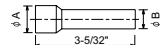
Items	Details
Main	Number of ports
	5 ~ 8 ports
	Number of branch joints
	One for each liquid and gas pipe
Accessory	Pipe material
	Phosphorus deoxidized copper C1220T-OL (JIS H3300)
	Insulation material
	Foamed polyethylene
Reducer	3 reducers of 3 types
	Cap
	3 caps for each liquid and gas pipe ; 6 in total

2. External drawing

For liquid pipe:

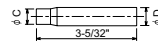
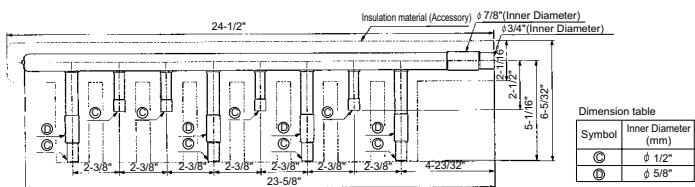


Reducer (Accessory):



A (Inner Diameter)	B (Outer Diameter)	Number of reducers
φ 3/4"	φ 5/8"	1
φ 1/2"	φ 3/8"	1

For gas pipe:

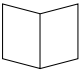
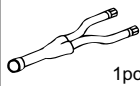
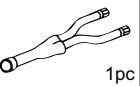

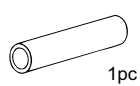
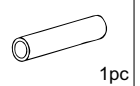
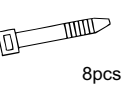
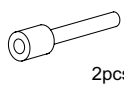


C (Inner Diameter)	D (Outer Diameter)	Number of reducers
φ 5/8"	φ 3/4"	1

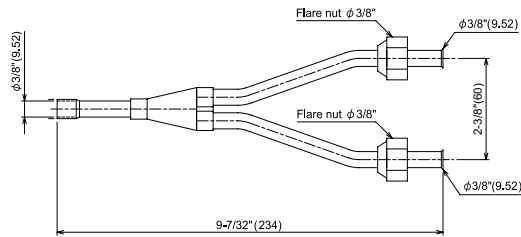
JOINT ADAPTER KIT - DIMENSIONS

CMY-R160C-J

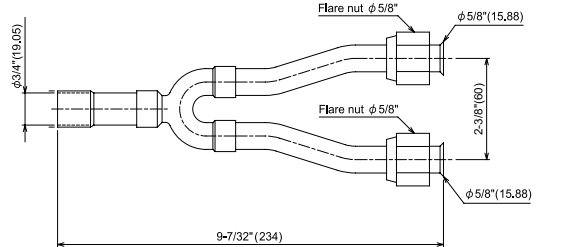
The Joint kit include following items:

①Instructions	②Joint pipe (for liquid side)	③Joint pipe (for gas side)	④Cover 1	⑤Cover 2 (for gas side)	⑥Cover 3 (for liquid side)	⑦Band	⑧Reducer
 1pc	 1pc	 1pc	 2pcs	 1pc	 1pc	 8pcs	 2pcs

②Joint pipe (for liquid side)

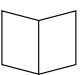

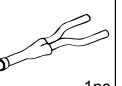

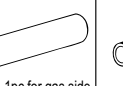
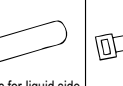
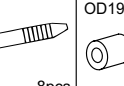
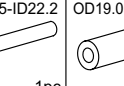
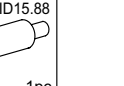


③Joint pipe (for gas side)



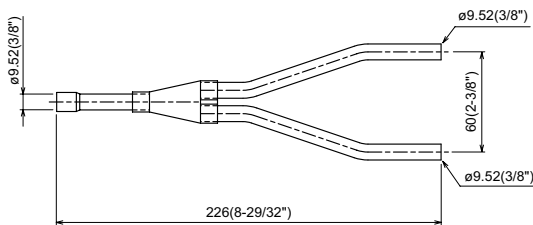
CMY-R160-J1

The Joint kit include following items:

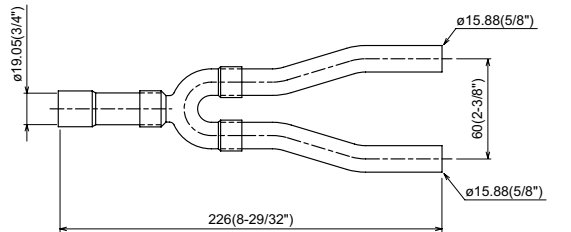
①Instruction	②Joint pipe(Small)	③Joint pipe(Large)	④Cover 1	⑤Cover 2 1pc for gas side	⑥Cover 3 1pc for liquid side	⑦Band	⑧Reducer 1 OD19.05-ID22.2	⑨Reducer 2 OD19.05-ID15.88
 This sheet 1pc	 1pc	 1pc	 2pcs	 1pc for gas side	 1pc for liquid side	 8pcs	 1pc	 1pc

Please prepare the following items in the field. ①Tape for insulation material sealing ②Extension pipe for refrigerant circuit

②Joint pipe (for liquid side)



③Joint pipe (for gas side)



1340 Satellite Boulevard. Suwanee, GA 30024
Toll Free: 800-433-4822 www.mehvac.com