



High Efficiency Heating, Cooling and Indoor Air Quality Systems

Superior Heating, Cooling and Indoor Air Quality in a Small and Energy Efficient Package



Zoning-Ready HE-Z Series



- Quiet Operation
- Constant Air Circulation
- Multi-Positional Air Handler
- Easy Installation & Maintenance
- Space Saving Small Diameter Ducts
- Zoning Capable right out of the Box!
- Many Attractive Vent Plate Options
- Superior Heating, Cooling and IAQ
- Eliminate Hot and Cold Spots

Perfect for **Retrofit Applications**, the Hi-Velocity Small Diameter Duct System fits in confined areas with **no major remodelling!**



White Plastic



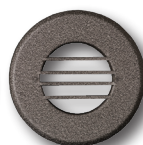
Stainless Steel



Silver Vein



Copper Vein



Black Wrinkle



Unfinished Maple



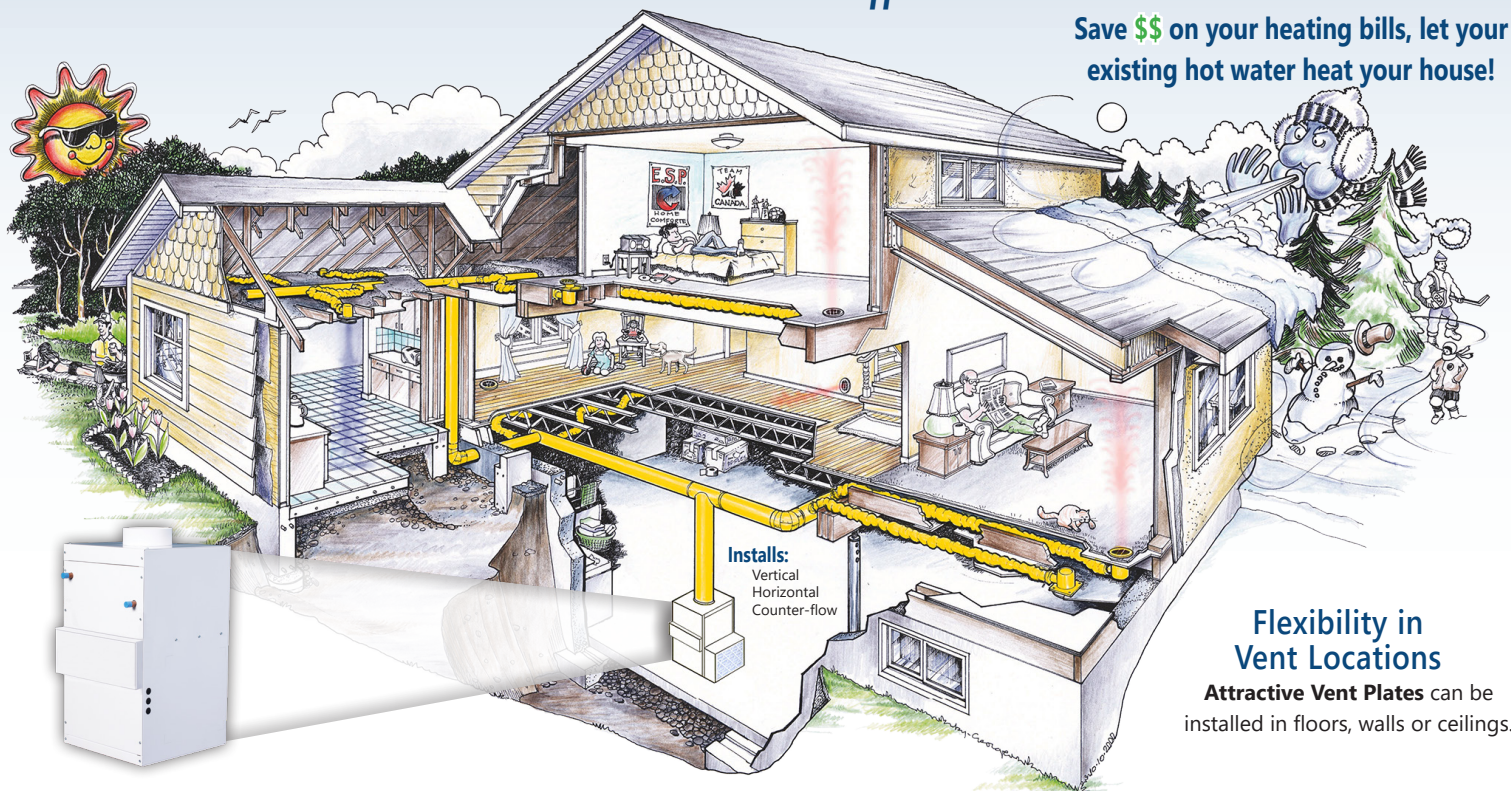
Unfinished Oak

www.hi-velocity.com

Hi-Velocity Systems™

High Efficiency Heating, Cooling and Indoor Air Quality Systems

Comfort From Floor to Ceiling, Satisfaction From Room To Room.
See what makes us *Different*.



Save \$\$ on your heating bills, let your existing hot water heat your house!

Flexibility in Vent Locations

Attractive Vent Plates can be installed in floors, walls or ceilings.

Inverter Drive Technology

High Efficiency, **Reduce Operating Costs** up to 50%

- **3-Phase Motor** will supply 1.5 to 5 tons (5.3 to 17.6 Kw) air flow
- Comes standard with **Zoning Capabilities**
- **110v Supply** comes standard, with optional 220v
- 3 Independent Field Adjustable Speeds:
 - Cooling
 - Heating
 - Constant Air Flow
- Utilizing **Variable Frequency Drive (VFD)** technology
- Dual function **Pressure Sensing Board (PSB)** with direct control option

Improved Indoor Air Quality

- **Draft free** heating and cooling
- **Even temperatures** in every room
- Constant air circulation helps eliminate dust
- Cooling mode can remove 30% more moisture from the air!



Our Vent Plates can be stained, painted or even wallpapered to **match your decor!**

Single Side Access Air Handler

- **Cooling Capacities** ranging from: 1.5 to 5 tons (5.3 to 17.6 Kw)
- **Heating Capacities** up to: 140,000 btuh (41 Kw)
- Optional **Heating Coil** simply slides in place
- Comes **Pre-Programmed** for Heating, Cooling and Ventilation
- **Multi-Positional** air handler is easily installed in Horizontal, Vertical and Counter-Flow applications

Third Party Components Easily Added

- Humidifiers
- HRV/ERVs



Manufactured by
Energy Saving
PRODUCTS LTD

The Modern Solution for all of your Heating, Cooling and Indoor Air Quality Needs.

Rough-In Boot

Is quickly and easily installed, the built in damper allows for individual room comfort and can be installed in the floor, ceiling or sidewall.

Damper Key

Designed to fit into the vent plate to allow for easy airflow adjustment.

HE & 2" Assembled Flexible Duct

The flexible duct can be installed along joists, in between walls or other space confined areas quickly and easily. Attached from the Branch Take-Off to the Rough-In Boot delivering the air quietly with a sound absorbing inner core.

Branch Take-Off

Shaped to fit the plenum making it easier to install and includes a gasket for an airtight seal.



Plenum

The typical 8" (200 mm) and 10" (250 mm) plenum used with the Hi-Velocity Systems makes for fast installations. This reduces over-all installation time compared to conventional systems and increases usable space of the structure.

HEPS

Pair with the **HEPS Hi-Velocity Air Purification System** for unsurpassed **Indoor Air Quality**. See our website for details!



Heating and Cooling Modules

Many coil options are available for the Hi-Velocity unit to meet the challenges of today's demands.

Heating

Can be supplied by:

Dual Purpose Hot Water Heaters, Boiler, Heat Pump, Geothermal and Electric Strip Coil.

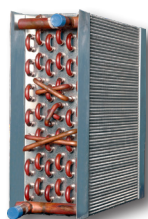
Cooling

Can be supplied by:

Refrigerant, Chilled Water, Heat Pump and Geothermal.

Zoning

Your system can be configured to select different temperatures for different parts of your home at different times as you desire.



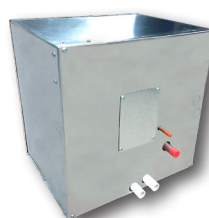
Hot Water Coils



Electric Strip Coils



Chilled Water Modules



Refrigerant Modules



**HE-Z Series
Multi-Positional
Air Handler**

Matching Coils
Refrigerant Coils
RBM/RBM-I/RPM-E/
RCM/RCM-I-50, 70, 100
Chilled Water Coils
WBM/WCM-50, 70, 100
Hot Water Coils
HWC-50, 70, 100
Electrical Coils
ESH/VESH-650, 750, 1100

For All of your Heating, Cooling and IAQ Needs

HE-Z-50/51

HE-Z-70/71

HE-Z-100/101

Hot Water Heating ⁽¹⁾	2 Ton Airflow (7.0 kW)		3 Ton Airflow (10.6 kW)		5 Ton Airflow (17.6 kW)	
Coil Type	6 Row/10 FPI		6 Row/10 FPI		6 Row/10 FPI	
Max. BTUH @ 190°F E.W.T. (kW @ 88°C)	59,400 (17.4 kW)		89,200 (26.1 kW)		134,000 (39.3 kW)	
Max. BTUH @ 180°F E.W.T. (kW @ 82°C)	54,500 (16.0 kW)		81,800 (24.0 kW)		122,900 (36.0 kW)	
Max. BTUH @ 170°F E.W.T. (kW @ 77°C)	49,600 (14.5 kW)		74,400 (21.8 kW)		111,800 (32.8 kW)	
Max. BTUH @ 160°F E.W.T. (kW @ 71°C)	44,600 (13.1 kW)		67,100 (19.7 kW)		100,700 (29.5 kW)	
Max. BTUH @ 150°F E.W.T. (kW @ 66°C)	39,700 (11.6 kW)		59,700 (17.5 kW)		89,700 (26.3 kW)	
Max. BTUH @ 140°F E.W.T. (kW @ 60°C)	34,700 (10.2 kW)		51,800 (15.2 kW)		78,400 (23.0 kW)	
Max. BTUH @ 130°F E.W.T. (kW @ 54°C)	29,700 (8.7 kW)		44,700 (13.1 kW)		67,100 (19.7 kW)	
Max. BTUH @ 120°F E.W.T. (kW @ 49°C)	24,800 (7.3 kW)		37,400 (11.0 kW)		56,200 (16.5 kW)	
Max. BTUH @ 110°F E.W.T. (kW @ 43°C)	20,100 (5.9 kW)		30,300 (8.9 kW)		45,500 (13.3 kW)	
GPM Flow Ratings (L/s Flow Ratings)	5 (0.32 L/s)		7 (0.44 L/s)		10 (0.63 L/s)	
Pressure Drop in Ft. H ₂ O (Drop in KPa)	3 (8.96 KPa)		6.5 (19.4 KPa)		6.8 (20.3 KPa)	
Chilled Water Cooling ⁽¹⁾	WBM/WCM-50		WBM/WCM-70		WBM/WCM-100	
Coil Type	6 Row/10 FPI		6 Row/10 FPI		6 Row/10 FPI	
WBM/WCM Modules in Cooling Mode	Total	Sensible	Total	Sensible	Total	Sensible
Max. BTUH @ 48°F E.W.T. (kW @ 8.9°C)	19,300 (5.7 kW)	13,700 (4.0 kW)	27,000 (7.9 kW)	19,200 (5.6 kW)	42,100 (12.3 kW)	30,300 (8.9 kW)
Max. BTUH @ 46°F E.W.T. (kW @ 7.8°C)	20,900 (6.1 kW)	14,200 (4.2 kW)	29,400 (8.6 kW)	20,000 (5.9 kW)	45,800 (13.4 kW)	32,100 (9.4 kW)
Max. BTUH @ 44°F E.W.T. (kW @ 6.7°C)	22,600 (6.6 kW)	14,900 (4.4 kW)	31,800 (9.3 kW)	21,000 (6.2 kW)	49,500 (14.5 kW)	33,700 (9.9 kW)
Max. BTUH @ 42°F E.W.T. (kW @ 5.6°C)	24,200 (7.1 kW)	15,700 (4.6 kW)	34,000 (10.0 kW)	21,800 (6.4 kW)	53,200 (15.6 kW)	35,100 (10.3 kW)
Max. BTUH @ 40°F E.W.T. (kW @ 4.4°C)	25,800 (7.6 kW)	16,300 (4.8 kW)	36,400 (10.7 kW)	23,000 (6.7 kW)	56,800 (16.6 kW)	36,400 (10.7 kW)
WBM/WCM Modules in Heating Mode	Total		Total		Total	
Max. BTUH @ 150°F E.W.T. (kW @ 66°C)	39,700 (11.6 kW)		59,700 (17.5 kW)		89,700 (26.3 kW)	
Max. BTUH @ 140°F E.W.T. (kW @ 60°C)	34,700 (10.2 kW)		51,800 (15.2 kW)		78,400 (23.0 kW)	
Max. BTUH @ 130°F E.W.T. (kW @ 54°C)	29,700 (8.7 kW)		44,700 (13.1 kW)		67,100 (19.7 kW)	
Max. BTUH @ 120°F E.W.T. (kW @ 49°C)	24,800 (7.3 kW)		37,400 (11.0 kW)		56,200 (16.5 kW)	
Max. BTUH @ 110°F E.W.T. (kW @ 43°C)	20,100 (5.9 kW)		30,300 (8.9 kW)		45,500 (13.3 kW)	
GPM Flow Ratings (L/s Flow Ratings)	5 (0.32 L/s)		7 (0.44 L/s)		10 (0.63 L/s)	
Pressure Drop in Ft. H ₂ O (Drop in KPa)	3 (8.97 KPa)		6.5 (19.4 KPa)		6.8 (20.3 KPa)	
Refrigerant Cooling ⁽¹⁾	RBM/RPM-E/RCM-50		RBM/RPM-E/RCM-70		RBM/RPM-E/RCM-100	
RBM/RPM-E/RCM Modules BTUH Refrigerant TX Cooling	1.5 - 2.0 Tons (5.3-7.0 kWh)		2.5 - 3.0 Tons (8.8-10.6 kWh)		3.5 - 5.0 Tons (12.3-17.6 kWh)	
Electrical Heating	ESH/VESH-650		ESH/VESH-750		ESH/VESH-1100	
Kilowatt Range (240v)	5 - 15 kW / 10 - 15 kW		5 - 18 kW / 10 - 18 kW		10 - 23 kW	
Specifications	HE-Z-50/51		HE-Z-70/71		HE-Z-100/101	
Max Rated CFM @ 1.2" E.S.P. (L/s @ 298 Pa)	500 (236 L/s)		750 (354 L/s)		1250 (590 L/s)	
Voltage	115/230/1/50/60 F.L.A. 8 amp		115/230/1/50/60 F.L.A. 8 amp		115/230/1/50/60 F.L.A. 8 amp	
Nominal Operating Amperage	4 Amps		6 Amps		8 Amps	
Integral Surge and Fuse System	Yes		Yes		Yes	
Horse Power - Watts	3/4hp - 310W		3/4hp - 530W		3/4hp - 720W	
Motor RPM	Variable		Variable		Variable	
Supply Air Size	8" Round (203mm)		8" Round (203mm)		10" Round (254mm)	
Supply Maximum Length ⁽²⁾	70' (21.3m)		80' (24.4m)		100' (30.5m)	
Return Size Needed	12" (120 in ²) (305mm/774cm ²)		12" (120 in ²) (305mm/774cm ²)		14" (168 in ²)	
Minimum Outlets ⁽³⁾	6 (HE) 12 (2")		10 (HE) 20 (2")		14 (HE) 28 (2")	
Maximum Outlets	13 (HE) 26 (2")		18 (HE) 36 (2")		30 (HE) 60 (2")	
Shipping Weight (no coil)	69 lbs (31.3 kg)		77 lbs (34.9 kg)		92 lbs (41.7 kg)	
Air Handler Size (L x W x H) (Add 2 1/2 inches to height for collars)	14 1/2" x 18 1/4" x 32 5/16" (368mm x 464mm x 821mm)		19 1/2" x 18 1/4" x 32 5/16" (495mm x 464mm x 821mm)		25 1/2" x 18 1/4" x 32 5/16" (648mm x 464mm x 821mm)	

⁽¹⁾ Heating specs are rated at 68°F E.A.T., Cooling specs are rated at 80°F/67°F dB/wB

⁽²⁾ Maximum length is from the unit to the supply run end cap. More than one run per unit is allowable.

⁽³⁾ Minimum of **four HE outlets per ton** of cooling needed. (2" Duct = Minimum **eight 2" outlets per ton**)

BTUH - British Thermal Units per Hour
E.W.T. - Entering Water Temperature
GPM - US Gallons per Minute
L/s - Litres per Second
CFM - Cubic Feet per Minute

F.L.A. - Full-Load Amperage
RPM - Revolutions per Minute
E.S.P. - External Static Pressure
E.A.T. - Entering Air Temperature
dB/wB - Dry Bulb/Wet Bulb

Manufactured by
Energy Saving
PRODUCTS LTD.

Call **1-888-652-2219**

Visit Us At

www.hi-velocity.com

Brochure-STND-Hi-Velocity-Standard-120121

