

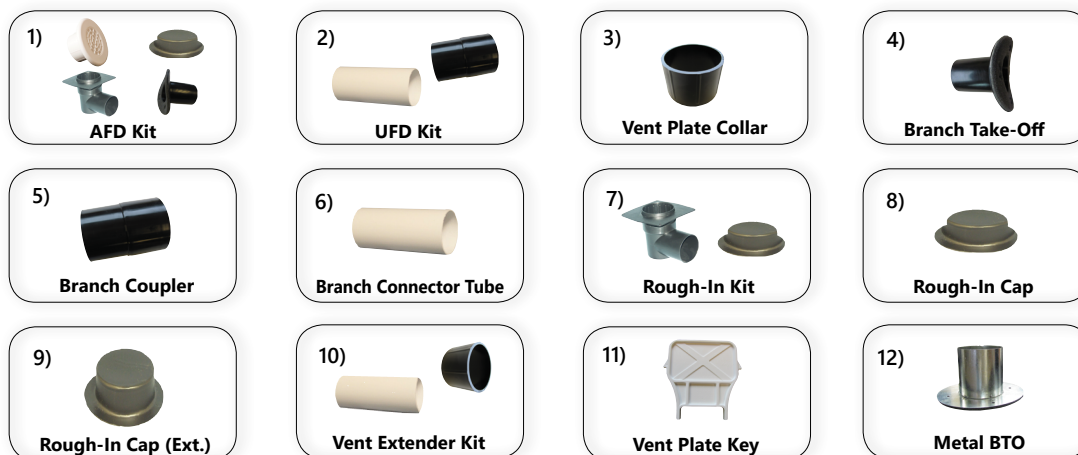
## Flexible Duct Accessories

### 2" Duct Accessories

Pic #	Part Name	Description	Part Number
1)	2" AFD Kit	Rough-in Boot & Cap, White Plastic Vent Plate, Branch Take-Off (HE)	10020110002
2)	2" UFD Kit	3 Branch Connector Tubes, 6 Branch Couplers, 6 Cable Ties (2")	10020110004
3)	2" Vent Plate Collar (8)	Vent Plate Collar (Extender) (2" - 8 per package)	30020110107
4)	2" Branch Take-Off	Branch Take-Off c/w Gasket (2")	10020100106
5)	2" Branch Coupler (8)	Branch Coupler (2" - 8 per package)	30020110203
6)	2" Branch Connector Tube (8)	Branch Connector Tube (2" - 8 per package)	30020100004
7)	2" Rough-In Kit	Rough-In Boot, Rough-In Cap (2")	10020100100
8)	2" Rough-In Cap	Rough-In Cap (2")	10020110302
9)	2" Rough-In Cap (Extended)	Rough In Cap (2" Extended, Designed for Gypcrete Floors) (2")	10020110303
10)	2" Vent Extender Kit (6)	Branch Connector Tube, Vent Plate Collar (2" - 6 per package)	30020110304
11)	Vent Plate Key	Universal Vent Plate Key (2" and HE)	20072030020
12)	2" Metal Branch Take-Off	Branch Take-Off for Flat Sided Duct Applications (2")	30072030019

### HE Duct Accessories

Pic #	Part Name	Description	Part Number
1)	HE AFD Kit	Rough-in Boot & Cap, White Plastic Vent Plate, Branch Take-Off (HE)	20072030011
2)	HE UFD Kit	3 Branch Connector Tubes, 6 Branch Couplers, 6 Cable Ties (HE)	20072030018
3)	HE Vent Plate Collar (4)	Vent Plate Collar (Extender) (HE - 4 per package)	40072030010
4)	HE Branch Take-Off	Branch Take-Off c/w Gasket (HE)	20072030004
5)	HE Branch Coupler (4)	Branch Coupler (HE - 4 per package)	40072030016
6)	HE Branch Connector Tube (4)	Branch Connector Tube (HE - 4 per package)	40072030012
6b)	HE Connector Tube - 20ft	4 ft Lengths, 5 per Bundle (HE)	20072030015
7)	HE Rough-In Kit	Rough-in Boot, Rough-in Cap (HE)	20072030007
8)	HE Rough-In Cap	Rough-In Cap (HE)	20072030006
9)	HE Rough-In Cap (Extended)	Rough-In Cap (2" Extended, Designed for Gypcrete Floors) (HE)	20072030014
10)	HE Vent Extender Kit (4)	Branch Connector Tube, Vent Plate Collar (HE - 4 per package)	40072030013
11)	Vent Plate Key	Universal Vent Plate Key (2" and HE)	20072030020
12)	HE Metal Branch Take-Off	Branch Take-Off for Flat-Sided Duct Applications (HE)	20072030019



**Notes:**

Branch Couplers (#5) are attached to both ends of our flexible duct, for connecting to a Rough-In Boot (#7) at one end and a Branch Take-Off (#4) at the other. Two Couplers can also connect to one Branch Connector Tube (#6) to extend duct lengths. (To a maximum of 25')

Vent Extender Kits (#10) are used for thicker floor applications by attaching the Branch Connector Tube (#6) between the Vent Plate and the Vent Plate Collar (#3), which then connects to the Rough-In Boot/Vent Plate.