

SERVICE PARTS LIST FOR MITSUBISHI ELECTRIC PACKAGED AIR-CONDITIONERS

**Series : SEZ-KD•NAR1.TH
SEZ-KD•NA4R1.TH**

REVISED

Jan. 2017

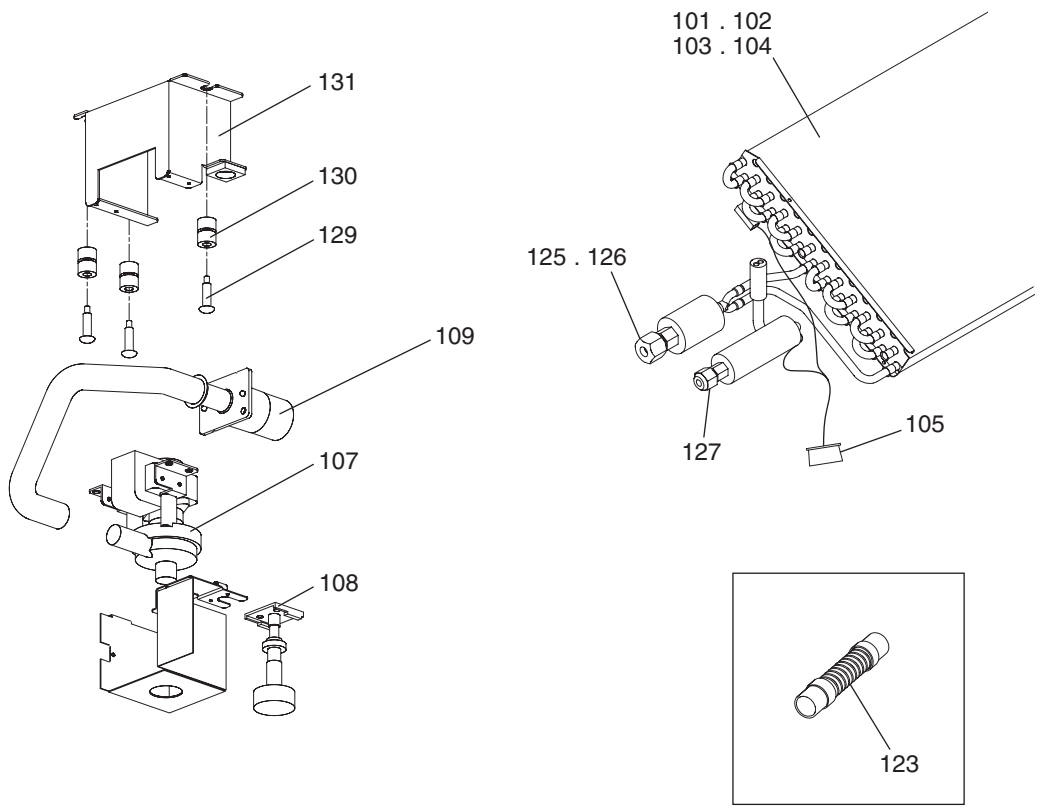
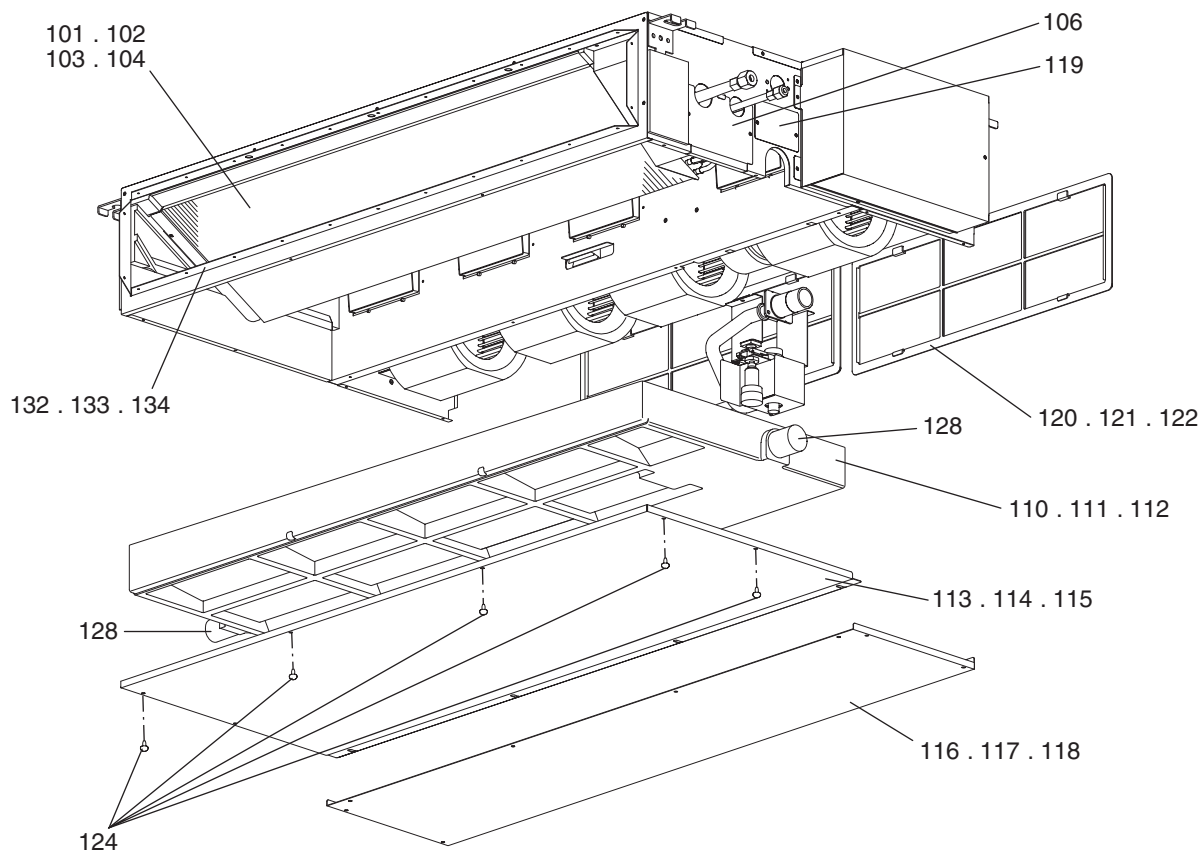
BWE1147B

INDEX
SEZ-KD09NAR1.TH SEZ-KD12NAR1.TH SEZ-KD15NAR1.TH SEZ-KD18NAR1.TH SEZ-KD09NA4R1.TH SEZ-KD12NA4R1.TH SEZ-KD15NA4R1.TH SEZ-KD18NA4R1.TH

Part information update day : **2017/01/11**

Please change the old catalog (issued July 2016, No.BWE1147A) to this new catalog.
Content of revision : Some of parts are changed.





SEZ-KD09,KD12,KD15,KD18NAR1.TH
SEZ-KD09,KD12,KD15,KD18NA4R1.TH

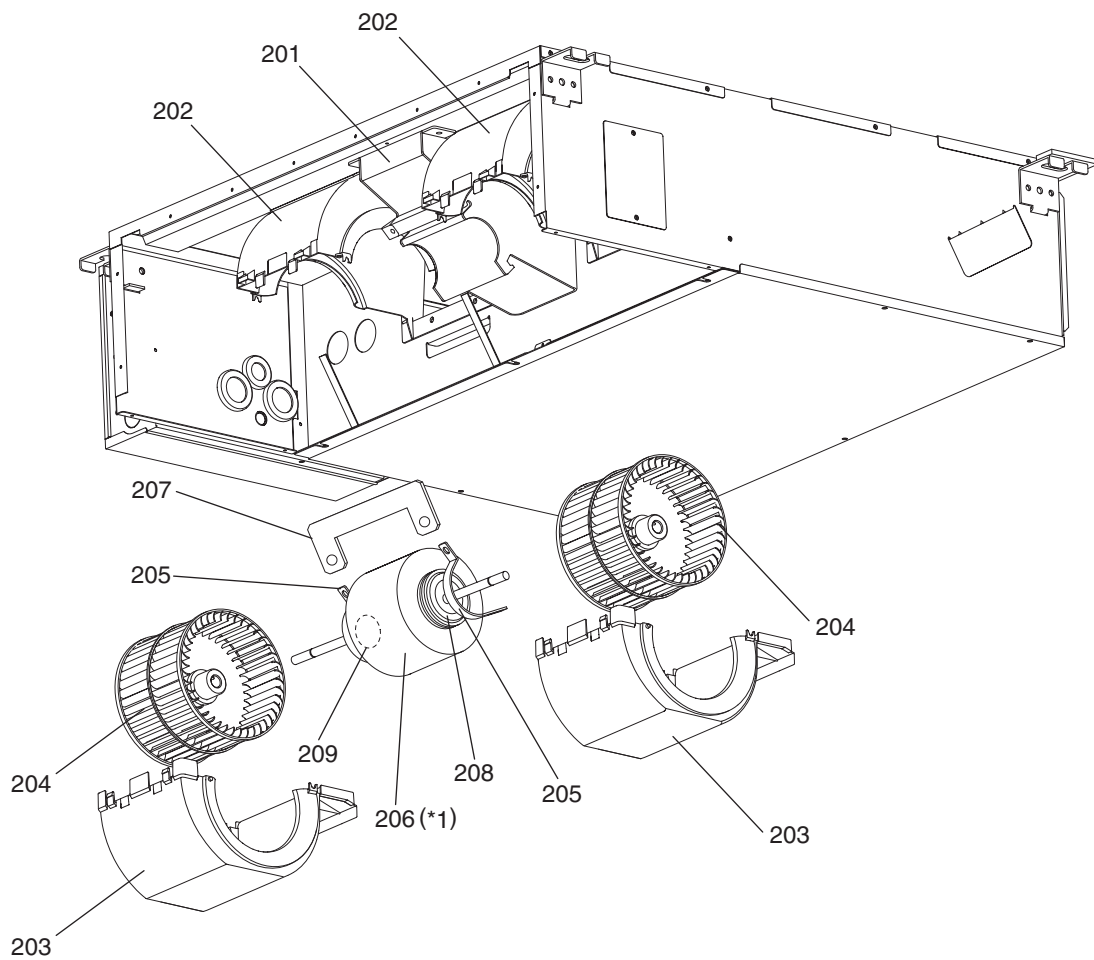
EXTERNAL PARTS

[illegible]

SEZ-KD09,KD12,KD15,KD18NAR1.TH
SEZ-KD09,KD12,KD15,KD18NA4R1.TH

EXTERNAL PARTS

[illegible]

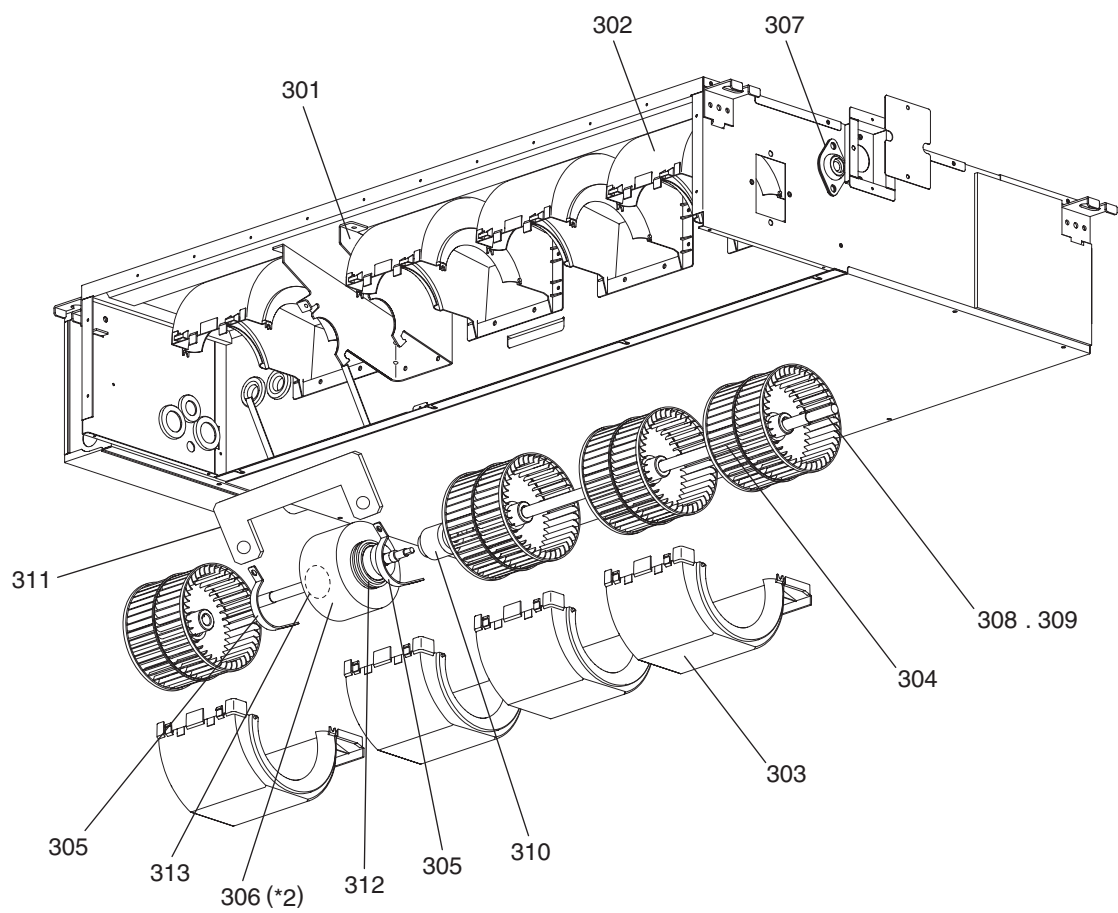


*1 Motor (Parts No.206) comes with rubber mounts.

SEZ-KD09,KD12NAR1.TH
SEZ-KD09,KD12NA4R1.TH

BLOWER PARTS (1)

[illegible]

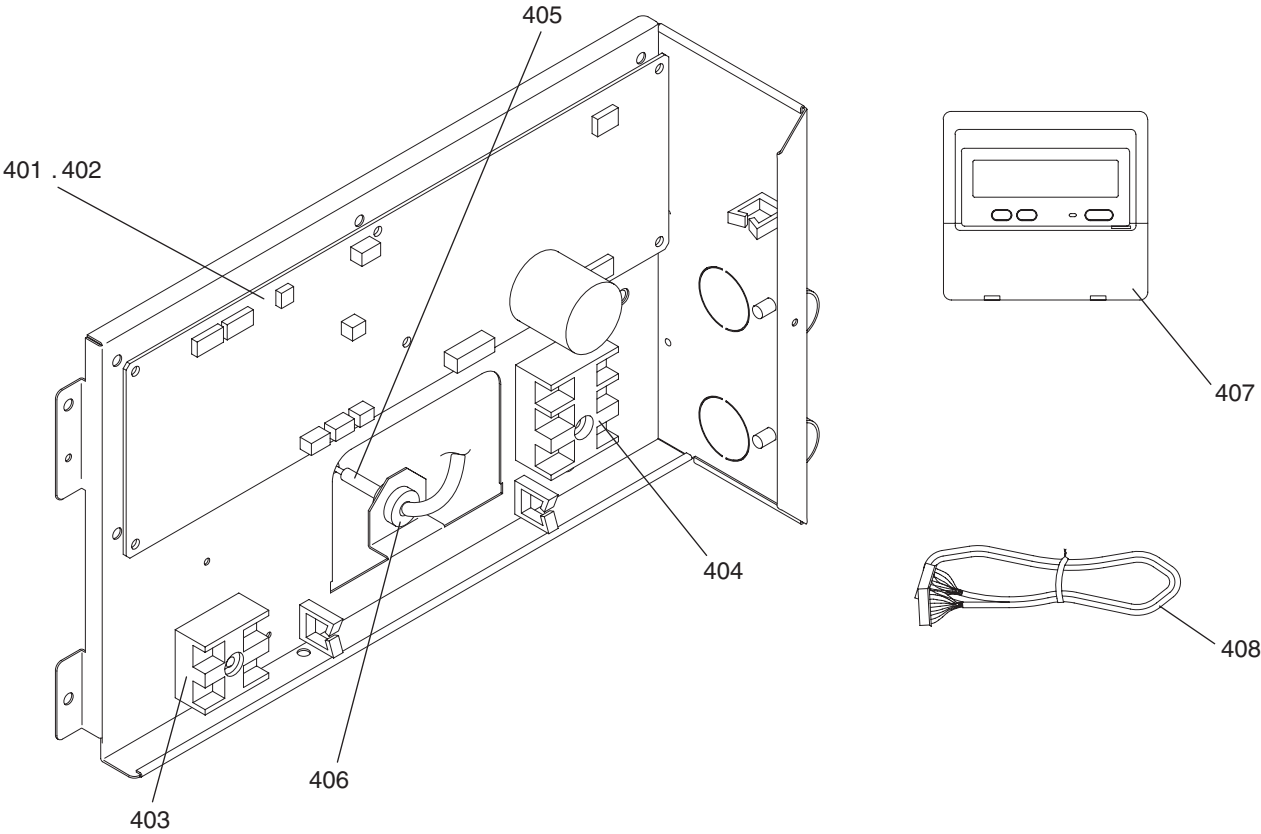


*2 Motor (Parts No.306) comes with rubber mounts.

SEZ-KD15,KD18NAR1.TH
SEZ-KD15,KD18NA4R1.TH

BLOWER PARTS (2)

[illegible]



SEZ-KD09,KD12,KD15,KD18NAR1.TH
SEZ-KD09,KD12,KD15,KD18NA4R1.TH

CONTROL BOX PARTS

[illegible]

SEZ-KD09,KD12,KD15,KD18NAR1.TH
SEZ-KD09,KD12,KD15,KD18NA4R1.TH

CONTROL BOX PARTS

[illegible]

mitsubishi **electric** **corporation**

BWE1147B (20170131)