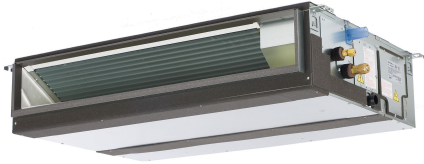


Job Name:

System Reference:

Date:

Indoor Unit:  
PEAD-A42AA7



Outdoor Unit:  
PUZ-HA42NKA



### INDOOR UNIT FEATURES

- Unobtrusive ceiling-concealed design for short-run ductwork.
- Wide ranging external static pressure (0.14-0.60 in. WG)
- Built-in condensate lift mechanism (up to 27'-9/16")
- Auto fan speed mode
- Optional FB Series filter boxes for easy access and service
- Ideal for residential homes, retail shopping centers, larger classrooms, office complexes, conference ballrooms, fitness centers, and more

### OUTDOOR UNIT FEATURES

- Variable speed INVERTER-driven compressor
- High heating capacity: flash injection circuit maintains 100% heating capacity at 5°F outdoor temperature
- Wide heating range: heating performance down to -13°F (average of 80% heating capacity)
- High speed heating at start up: Hyper-Heating INVERTER® reduces the time for heating at start up by about half compared to standard models
- Suction accumulator pre-charged with refrigerant volume for piping length up to 100 ft.
- Twinning of two indoor units possible with the 36 kBTU/H model
- High pressure/temperature protection

# SPECIFICATIONS: PEAD-A42AA7 & PUZ-HA42NKA

Cooling <sup>1</sup>	Maximum Capacity	BTU/H	42,000
	Rated Capacity	BTU/H	42,000
	Minimum Capacity	BTU/H	19,000
	Maximum Power Input	W	4,200
	Rated Power Input	W	4,200
	Moisture Removal	Pints/h	9.0
	Sensible Heat Factor		0.76
	Power Factor	%	94.1
Heating at 47°F <sup>2</sup>	Maximum Capacity	BTU/H	54,000
	Rated Capacity	BTU/H	48,000
	Minimum Capacity	BTU/H	21,000
	Maximum Power Input	W	5,360
	Rated Power Input	W	3,800
	Power Factor	%	93.3
Heating at 17°F <sup>3</sup>	Maximum Capacity	BTU/H	48,000
	Rated Capacity	BTU/H	43,000
	Maximum Power Input	W	6,500
	Rated Power Input	W	4,840
Heating at 5°F <sup>4</sup>	Maximum Capacity	BTU/H	48,000
	Maximum Power Input	W	7,030
Efficiency	SEER		14.3
	EER <sup>1</sup>		10.0
	HSPF (IV)		10.8
	COP at 47°F <sup>2</sup>		3.70
	COP at 17°F in Maximum Capacity		2.16
	COP at 5°F in Maximum Capacity		2.00
Electrical	Voltage, Phase, Frequency		208 / 230V, 1-phase, 60 Hz
	Guaranteed Voltage Range	V AC	198 – 253
	Voltage: Indoor - Outdoor, S1-S2	V AC	208V / 230
	Voltage: Indoor - Outdoor, S2-S3	V DC	24
	Voltage: Indoor - Remote controller	V DC	12
	Recommended Fuse/Breaker Size (Outdoor)	A	40
	Recommended Wire Size (Indoor - Outdoor)	AWG	14
Indoor Unit	MCA	A	3.50
	Fan Motor Full Load Amperage	A	2.80
	Fan Motor Output	W	244
	Airflow Rate, Dry	CFM	1042-1254-1483
	Airflow Rate, Wet	CFM	1002-1214-1443
	External Static Pressure	in.WG	0.14-0.20-0.28-0.40-0.60
	Sound Pressure Level	dB(A)	36-40-44
	Drain Pipe Size	In. (mm)	1-1/4 (32)
	Condensate Lift Mechanism, Maximum Distance	Ft. (m)	27-9/16 (700)
	Heat Exchanger Type		Plate fin coil
	External Finish Color		Galvanized
	Unit Dimensions // Grille Dimensions	W: In. (mm)	55-1/8 (1400)
		D: In. (mm)	28-7/8 (732)
		H: In. (mm)	9-7/8 (250)
	Package Dimensions // Grille Dimensions	W: In. (mm)	65
		D: In. (mm)	34-11/16
		H: In. (mm)	13-7/16

# SPECIFICATIONS: PEAD-A42AA7 & PUZ-HA42NKA

	Unit Weight	Lbs. (kg)	91 (41)
	Package Weight	Lbs. (kg)	106
Indoor Unit Operating Temperature Range	Cooling Intake Air Temp (Maximum / Minimum)	°F	90 DB, 73 WB / 66 DB, 59 WB
	Heating Intake Air Temp (Maximum / Minimum)	°F	82 DB / 50 DB
Outdoor Unit	MCA	A	37
	MOCP	A	44
	Fan Motor Full Load Amperage	A	0.4+0.4
	Fan Motor Output	W	86+86
	Airflow Rate	CFM	3,320
	Refrigerant Control	Electronic Expansion Valve	
	Defrost Method	Reverse Cycle	
	Heat Exchanger Type	Cross fin	
	Sound Pressure Level, Cooling <sup>1</sup>	dB(A)	49
	Sound Pressure Level, Heating <sup>2</sup>	dB(A)	51
	Compressor Type	INVERTER-Driven Twin Rotary	
	Compressor Model	ANB42FJTMT	
	Compressor Rated Load Amps	A	19
	Compressor Locked Rotor Amps	A	28
	Compressor Oil Type // Charge	oz.	FVC68D // 54
	External Finish Color	Ivory Munsell 3Y 7.8/1.1	
	Base Pan Heater	Option (PAC-SJ20BH-E)	
	Unit Dimensions	W: In. (mm)	41-3/8[1,050]
		D: In. (mm)	13 + 1-3/16 (330 + 30)
		H: In. (mm)	52-11/16 (1,338)
	Package Dimensions	W: In. (mm)	42-15/16 (1,090)
		D: In. (mm)	17-11/16 (450)
		H: In. (mm)	56-1/4 (1,428)
	Unit Weight	Lbs. (kg)	287 (130)
	Package Weight	Lbs. (kg)	313 (142)
Outdoor Unit Operating Temperature Range	Cooling Intake Air Temp (Maximum / Minimum)	°F	115 DB / 0* DB
	Heating Intake Air Temp (Maximum / Minimum)	°F	70 DB, 59 WB / -13 DB, -13 WB
	Thermal Lock-out / Re-start Temperatures**	°F	n/a
Refrigerant	Type	R410A	
	Charge	Lbs, oz	13, 4
Piping	Gas Pipe Size O.D. (Flared)	In.(mm)	5/8 (15.88)
	Liquid Pipe Size O.D. (Flared)	In.(mm)	3/8 (9.52)
	Maximum Piping Length	Ft. (m)	245 (75)
	Maximum Height Difference	Ft. (m)	100 (30)
	Maximum Number of Bends	15	

## Notes

AHRI Rated Conditions (Rated data is determined at a fixed compressor speed)	<sup>1</sup> Cooling (Indoor // Outdoor)	°F	80 DB, 67 WB // 95 DB, 75 WB
	<sup>2</sup> Heating at 47°F (Indoor // Outdoor)	°F	70 DB, 60 WB // 47 DB, 43 WB
	<sup>3</sup> Heating at 17°F (Indoor // Outdoor)	°F	70 DB, 60 WB // 17 DB, 15 WB
Conditions	<sup>4</sup> Heating at 5°F (Indoor // Outdoor)	°F	70 DB, 60 WB // -4 DB, -5 WB

\*Wind baffles required to operate below 23°F DB in cooling mode. PUZ with wind baffle: 0°F - 115°F.

\*\*System cuts out in heating mode to avoid thermistor error and automatically restarts at these temperatures.

# ACCESSORIES: PEAD-A42AA7

Filter Box with MERV 13 Filters	□ FBM2-4-A
Wireless Signal Receiver	□ PAR-SA9CA-E
Wireless Signal Receiver	□ PAR-FA32MA-W
Wireless Remote Controller	□ PAR-FL32MA-E
kumo touch™ RedLINK™ Wireless Controller	□ MHK2
Deluxe MA Remote Controller	□ PAR-40MAAU
Simple MA Controller	□ PAC-YT53CRAU-J
Touch MA Controller	□ PAR-CT01MAU-SB
Airzone ZBS Wired Blueface Principal Controller White	□ AZZBSBLUEFACECB
Airzone ZBS Wired Think Controller White	□ AZZBSTHINKCB
Airzone ZBS Wireless Think Controller White	□ AZZBSTHINKRB
Airzone ZBS Wired Lite Controller White	□ AZZBSLITECB
Airzone ZBS Wireless Lite Controller White	□ AZZBSLITERB
Wired Remote Sensor	□ PAC-SE41TS-E
Wireless Temperature and Humidity Sensor	□ PAC-USWHS003-TH-1
Flush Mount Remote Temperature Sensor	□ PAC-USSEN001-FM-1
Wireless Interface 2	□ PAC-USWHS002-WF-2
Thermostat Interface	□ PAC-US444CN-1
kumo station®	□ PAC-WHS01HC-E
USNAP Interface	□ PAC-WHS01UP-E
IT Extender	□ PAC-WHS01IE-E
BACnet® and MODBUS® Interface	□ PAC-UKPRC001-CN-1
External Fan / Heater Control Relay Adapter	□ CN24RELAY-KIT-CM3
Connector cable for remote display	□ PAC-SA88HA-EP
Wire for Remote on/off with CN32 connector	□ PAC-715AD
Lockdown Bracket for Hand-held Remote Controllers	□ RCMKP1CB
Remote Operation Adapter <sup>1</sup>	□ PAC-SF40RM-E
Blue Diamond Sensor Extension Cable — 15 Ft.	□ C13-103
MegaBlue Advanced Blue Diamond Condensate Pump w/ Reservoir & Sensor	□ X87-835 - 110 to 250V
Advanced Blue Diamond Mini Condensate Pump w/ Reservoir & Sensor (208/230V) [recommended]	□ X87-721 - 208/230V
(30A/600V/UL) [fits 2" X 4" utility box] - Black	□ TAZ-MS303
(30A/600V/UL) [fits 2" X 4" utility box] - White	□ TAZ-MS303W

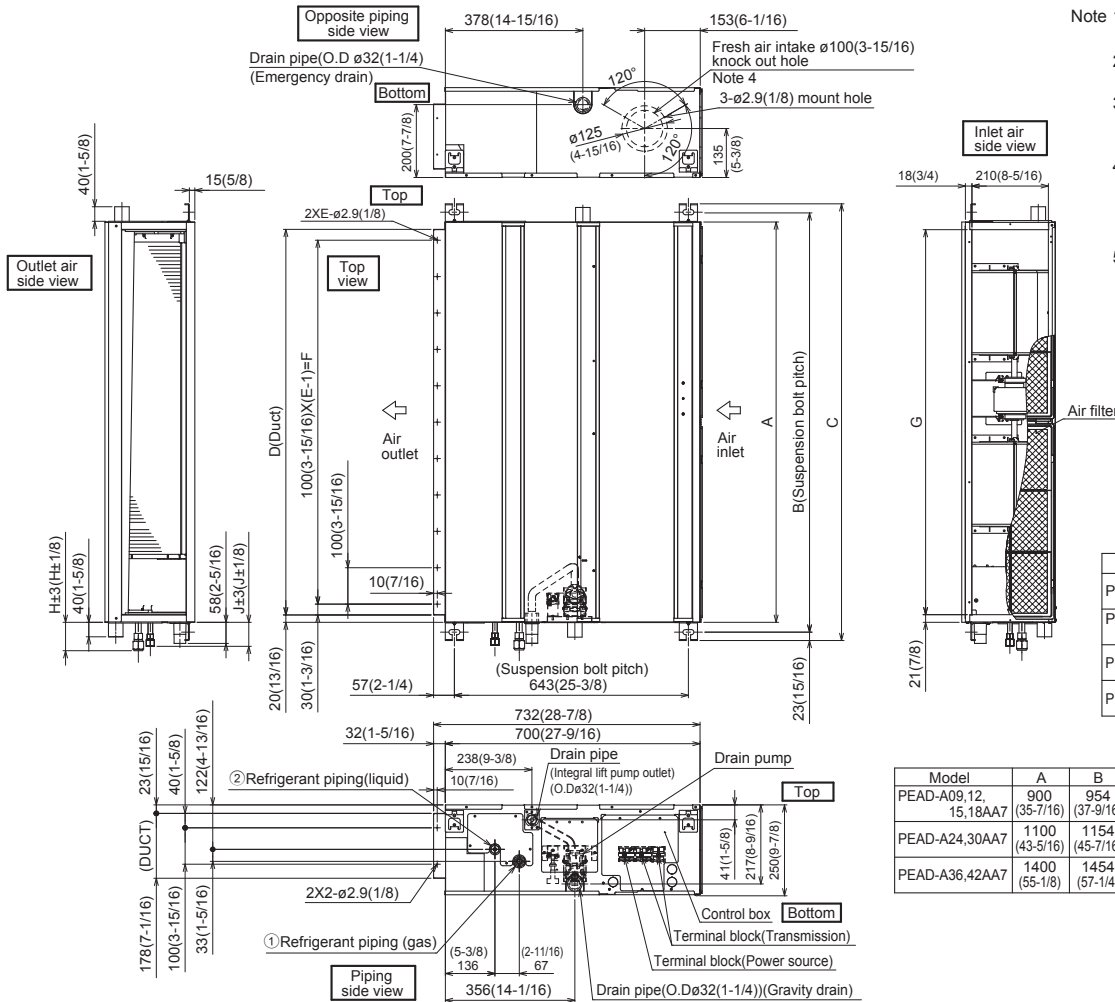
<sup>1</sup> Unable to use with wireless remote controller

## ACCESSORIES: PUZ-HA42NKA

Air Outlet Guide	□ PAC-SH96SG-E (two pieces are required)
Front Wind Baffle	□ WB-PA3 (two pieces are required)
Drain Socket	□ PAC-SG61DS-E
Defrost Heater	□ PAC-SJ20BH-E
Centralized Drain Pan	□ PAC-SH97DP-E
M-NET Converter	□ PAC-SJ85MA-E
M-NET Converter	□ PAC-SJ95MA-E
Control/Service Tool	□ PAC-SK52ST
Hail Guard	□ HG-A2
Condensing Unit Mounting Pad 24" x 42" x 3"	□ ULTRILITE2
Outdoor Unit Stand—12" High	□ QSMS1202M
Outdoor Unit Stand—18" High	□ QSMS1802M
Outdoor Unit Stand—24"High	□ QSMS2402M
Heavy Duty Wall Mounting Bracket for Outdoor Units—Coated Steel	□ QSWB2000M-1
Heavy Duty Wall Mounting Bracket for Outdoor Units—316 Series Stainless Steel	□ QSWBSS
3/8" x 5/8" x 10' / 1/2" Lineset (Twin-Tube Insulation)	□ MPLS385812T-10
3/8" x 5/8" x 15' / 1/2" Lineset (Twin-Tube Insulation)	□ MPLS385812T-15
3/8" x 5/8" x 30' / 1/2" Lineset (Twin-Tube Insulation)	□ MPLS385812T-30
3/8" x 5/8" x 50' / 1/2" Lineset (Twin-Tube Insulation)	□ MPLS385812T-50
3/8" x 5/8" x 65' / 1/2" Lineset (Twin-Tube Insulation)	□ MPLS385812T-65
3/8" x 5/8" x 100' / 1/2" Lineset (Twin-Tube Insulation)	□ MPLS385812T-100

# DIMENSIONS: PEAD-A42AA7 & PUZ-HA42NKA

## PEAD-A42AA7



- Note 1. Use an M10 screw for the suspension bolt (field supply).
2. Keep the service space for maintenance at the bottom.
3. This drawing is for PEAD-A24-30-36-42 AA7 models, which have 2 fans. PEAD-A09-12-15-18AA7 models have 1 fan.
4. If the inlet duct is used, remove the air filter (supplied with the unit), then install the filter (field supply) at the suction side.
5. Heat air to 0°C (32°F) or higher when taking fresh air with a fresh air intake.

Unit:mm(in.)

Model	J	① Gas pipe	② Liquid pipe
PEAD-A09AA7	62 (2-1/2)	ø9.52 (3/8)	ø6.35 (1/4)
PEAD-A12,15,18AA7	62 (2-1/2)	ø12.7 (1/2)	ø6.35 (1/4)
PEAD-A24,30AA7	66 (2-5/8)	ø15.88 (5/8)	ø9.52 (3/8)
PEAD-A36,42AA7			

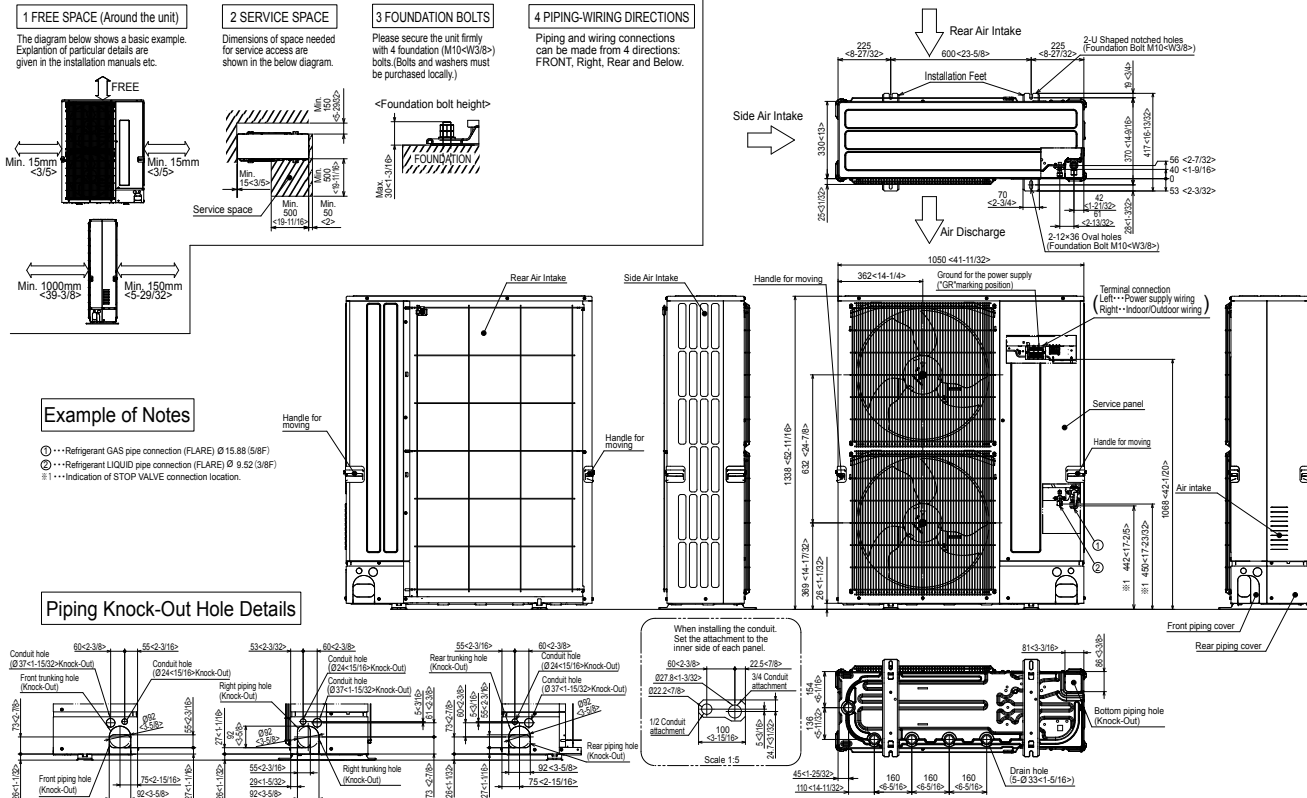
Unit:mm(in.)

Model	A	B	C	D	E	F	G	H
PEAD-A09,12,15,18AA7	900 (35-7/16)	954 (37-9/16)	1000 (39-3/8)	860 (33-7/8)	9	800 (31-1/2)	858 (33-13/16)	72 (2-7/8)
PEAD-A24,30AA7	1100 (43-5/16)	1154 (45-7/16)	1200 (47-1/4)	1060 (41-3/4)	11	1000 (39-3/8)	1058 (41-11/16)	78 (3-1/8)
PEAD-A36,42AA7	1400 (55-1/8)	1454 (57-1/4)	1500 (59-1/16)	1360 (53-9/16)	14	1300 (51-3/16)	1358 (53-1/2)	

# DIMENSIONS: PEAD-A42AA7 & PUZ-HA42NKA

## PUZ-HA42NKA

Unit: mm<inch>



1340 Satellite Boulevard, Suwanee, GA 30024  
Toll Free: 800-433-4822 [www.mehvac.com](http://www.mehvac.com)

FORM# PEAD-A42AA7 / PUZ-HA42NKA - 202009

