



www.Source1Parts.com

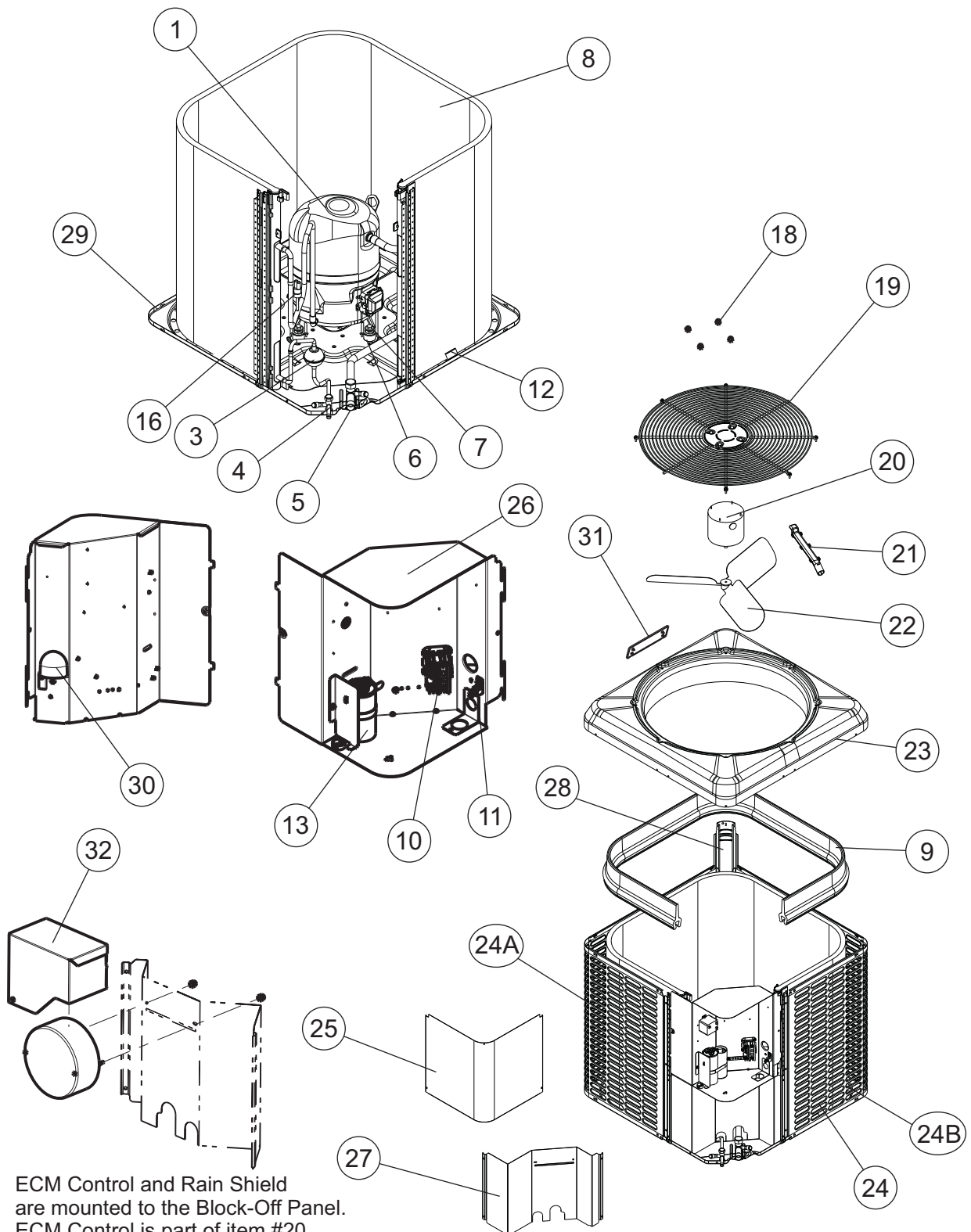
**CC7 SERIES - MICROCHANNEL
17 SEER AIR CONDITIONER - R410A
(STYLE A)**

HVAC SERVICE PARTS

Supersedes:035-24595-001 Rev. C (0516)

035-24595-001 Rev. D (1217)

1 of 4



| ITEM | DESCRIPTION | CC7B1821SA | CC7B2421SA | CC7B3021SA | CC7B3621SA |
|------|---|-----------------------|-----------------------|-----------------------|-----------------------|
| 1 | Compressor | S1-01504818004 | S1-01504832004 | S1-01504833004 | S1-01504618004 |
| 2* | Blanket, Compressor Sound | --- | --- | --- | --- |
| 3 | Filter Drier | S1-400503 | S1-400503 | S1-400503 | S1-400503 |
| 4 | Base Valve (3/8") (Liquid) | S1-02322459000 | S1-02322459000 | S1-02322459000 | S1-02322459000 |
| 5 | Base Valve (3/4") (Suction) | S1-02322460000 | S1-02322460000 | S1-02322460000 | S1-02322460000 |
| 6 | Compressor Mount (Pkg. of 4) | S1-02810581000 | S1-02810581000 | S1-02810581000 | S1-02810581000 |
| 7 | Bolt, Compressor (4 Req'd) | S1-02131425000 | S1-02131425000 | S1-02131425000 | S1-02131425000 |
| 8 | Outdoor Coil Assembly | S1-37339413002 | S1-37339413002 | S1-37339433002 | S1-37339433002 |
| 9 | Molded Foam, Outdoor Coil | S1-02817069000 | S1-02817069000 | S1-02817072000 | S1-02817072000 |
| 10 | Contacto (30 amp) | S1-02427531000 | S1-02427531000 | S1-02427531000 | S1-02427531000 |
| 11 | Lug, Ground | S1-02521798000 | S1-02521798000 | S1-02521798000 | S1-02521798000 |
| 12 | Mount, Coil (6 Req'd) | S1-02817063000 | S1-02817063000 | S1-02817063000 | S1-02817063000 |
| 13 | Dual Capacitor (40/5 MFD) | S1-02425893700 | --- | S1-02425893700 | --- |
| | Dual Capacitor (35/5 MFD) | --- | S1-02423998700 | --- | --- |
| | Dual Capacitor (45/5 MFD) | --- | --- | --- | S1-02425895700 |
| 14 | | | | | |
| 15 | | | | | |
| 16 | Switch, Pressure (High) | S1-02546848000 | S1-02546848000 | S1-02546848000 | S1-02546848000 |
| 17* | Mount, Stand-off, Coil Guard (Qty. noted) | (2) S1-02817062000 | (2) S1-02817062000 | (4) S1-02817062000 | (4) S1-02817062000 |
| 18 | Kit, Motor Mounting (Acorn Nuts) | S1-36390117700 | S1-36390117700 | S1-36390117700 | S1-36390117700 |
| 19 | Guard, Fan | S1-02647769000 | S1-02647769000 | S1-02647770000 | S1-02647770000 |
| 20 | Motor, Fan | S1-02436325000 | S1-02436325000 | S1-02436324000 | S1-02436324000 |
| 21 | Wireway | S1-02816468000 | S1-02816468000 | S1-02816469000 | S1-02816469000 |
| 22 | Blade, Fan | S1-32634097000 | S1-32634097000 | S1-02642370000 | S1-02642370000 |
| 23 | Top | S1-07339395005 | S1-07339395005 | S1-07339395008 | S1-07339395008 |
| 24 | Panel, Coil Guard (2 Req'd) | S1-07339434001 | S1-07339434001 | --- | --- |
| 24A | Panel, Coil Guard (LH) | --- | --- | S1-07339434003 | S1-07339434003 |
| 24B | Panel, Coil Guard (RH) | --- | --- | S1-07339434002 | S1-07339434002 |
| 25 | Cover, Control Box | S1-07339400005 | S1-07339400005 | S1-07339400005 | S1-07339400005 |
| 26 | Box, Control | S1-07339486001 | S1-07339486001 | S1-07339486001 | S1-07339486001 |
| 27 | Panel, Block-Off | S1-07339399003 | S1-07339399003 | S1-07339399012 | S1-07339399012 |
| 28 | Post, Corner | S1-07339401009 | S1-07339401009 | S1-07339401007 | S1-07339401007 |
| 29 | Pan, Base | S1-07339397002 | S1-07339397002 | S1-07339397003 | S1-07339397003 |
| 30 | Gasket, Rain Guard | S1-02817106000 | S1-02817106000 | S1-02817106000 | S1-02817106000 |
| 31 | Badge, Branding | S1-02816477000 | S1-02816477000 | S1-02816477000 | S1-02816477000 |
| 32 | Shield, Rain, ECM | S1-07339432001 | S1-07339432001 | S1-07339432001 | S1-07339432001 |
| 33* | Harness, Wire, AC | S1-02547245000 | S1-02547245000 | S1-02547245000 | S1-02547245000 |
| 34* | Switch, Pressure (Low) | S1-02436313000 | S1-02436313000 | S1-02436313000 | S1-02436313000 |
| 35 | | | | | |
| 36* | Harness, Compressor | S1-02541088000 | S1-02541088000 | S1-02541088000 | S1-02541088000 |
| 37* | Wiring Diagram | 5160254 | 5160254 | 5160254 | 5160254 |

NOTE: *Not ShownNew replacement parts shown in **bold** face type at the first printing of parts list dated 12/17.

Major components and suggested stocking items are shown with shaded item number.

"←" Across from row indicates a change in that row. Changed part numbers are in red.

--- Not applicable to specified model.



| ITEM | DESCRIPTION | CC7B4221SA | CC7B4821SA | CC7B6021SA |
|------|--|-----------------------|-----------------------|-----------------------|
| 1 | Compressor | S1-01504627004 | S1-01504834004 | S1-01504852004 |
| 2* | Blanket, Compressor Sound | S1-01007646000 | S1-01007646000 | --- |
| 3 | Filter Drier | S1-400503 | S1-400503 | S1-400503 |
| 4 | Base Valve (3/8") (Liquid) | S1-02322459000 | S1-02322459000 | S1-02322459000 |
| 5 | Base Valve (7/8") (Suction) | S1-02322461000 | S1-02322461000 | S1-02322461000 |
| 6 | Compressor Mount (Pkg. of 4) | S1-02810505000 | S1-02810505000 | S1-02810505000 |
| 7 | Bolt, Compressor (4 Req'd) | S1-02116047000 | S1-02116047000 | S1-02116047000 |
| 8 | Outdoor Coil Assembly | S1-37339433003 | S1-37339433003 | S1-37339433001 |
| 9 | Molded Foam, Outdoor Coil | S1-02817075000 | S1-02817075000 | S1-02817075000 |
| 10 | Contactors (30 amp) | S1-02427531000 | S1-02427531000 | --- |
| | Contactors (40 amp) | --- | --- | S1-02425837700 |
| 11 | Lug, Ground | S1-02521798000 | S1-02521798000 | S1-02521798000 |
| 12 | Mount, Coil (8 Req'd) | S1-02817063000 | S1-02817063000 | S1-02817063000 |
| 13 | Dual Capacitor (45/5 MFD) | S1-02425895700 | S1-02425895700 | --- |
| | Dual Capacitor (70/5 MFD) | --- | --- | S1-02435844000 |
| 14 | | | | |
| 15 | | | | |
| 16 | Switch, Pressure (High) | S1-02546848000 | S1-02546848000 | S1-02546848000 |
| 17* | Mount, Stand-off, Coil Guard (4 Req'd) | S1-02817062000 | S1-02817062000 | S1-02817062000 |
| 18 | Kit, Motor Mounting (Acorn Nuts) | S1-36390117700 | S1-36390117700 | S1-36390117700 |
| 19 | Guard, Fan | S1-02647771000 | S1-02647771000 | S1-02647771000 |
| 20 | Motor, Fan | S1-02436323000 | S1-02436323000 | S1-02436329000 |
| 21 | Wireway | S1-02816470000 | S1-02816470000 | S1-02816470000 |
| 22 | Blade, Fan | S1-02649676000 | S1-02649676000 | S1-02649677000 |
| 23 | Top | S1-07339395011 | S1-07339395011 | S1-07339395011 |
| 24A | Panel, Coil Guard (LH) | S1-07339434005 | S1-07339434005 | S1-07339434007 |
| 24B | Panel, Coil Guard (RH) | S1-07339434004 | S1-07339434004 | S1-07339434006 |
| 25 | Cover, Control Box | S1-07339400005 | S1-07339400005 | S1-07339400005 |
| 26 | Box, Control | S1-07339486001 | S1-07339486001 | S1-07339486001 |
| 27 | Panel, Block-Off | S1-07339399016 | S1-07339399016 | S1-07339430002 |
| 28 | Post, Corner | S1-07339401011 | S1-07339401011 | S1-07339431002 |
| 29 | Pan, Base | S1-07339397004 | S1-07339397004 | S1-07339397004 |
| 30 | Gasket, Rain Guard | S1-02817106000 | S1-02817106000 | S1-02817106000 |
| 31 | Badge, Branding | S1-02816477000 | S1-02816477000 | S1-02816477000 |
| 32 | Shield, Rain, ECM | S1-07339432001 | S1-07339432001 | S1-07339432001 |
| 33* | Harness, Wire, AC | S1-02547245000 | S1-02547245000 | S1-02547245000 |
| 34* | Switch, Pressure (Low) | S1-02436313000 | S1-02436313000 | S1-02436313000 |
| 35* | Dampener, Discharge Line | --- | --- | S1-02817125000 |
| 36* | Harness, Compressor | S1-02541088000 | S1-02541088000 | S1-02541088000 |
| 37* | Wiring Diagram | 5160254 | 5160254 | 5160254 |

NOTE: *Not ShownNew replacement parts shown in **bold** face type at the first printing of parts list dated 12/17.

Major components and suggested stocking items are shown with shaded item number.

"←" Across from row indicates a change in that row. Changed part numbers are in red.

--- Not applicable to specified model.

TO ORDER AUTHORIZED FACTORY REPLACEMENT PARTS - Contact your Source1 HVAC Parts Distributor or visit our website at **www.Source1Parts.com** for a Distributor and Dealer listing.