

ACCESSORY KIT INSTALLATION INSTRUCTIONS

AC COMMUNICATING CONTROL BOARD KIT (S1-33102952000) FOR MODELS: CZE, AC5B, AL5B, CZH, AC8B, AL8B

INSTALLATION

1. Disconnect power to the unit.
2. Remove control access panel.
3. Remove the old control board.
4. Locate the correct position of the control board, as shown in Figure 1.
5. Attach the control board to the control box with the existing screws.
6. Wire control board for specific model as shown in unit wiring diagrams, either as communicating or conventional.
7. Verify proper system functionality.
8. Upon completion of installation, verify that no fault codes are stored in memory. Clear the fault code memory if necessary, as described on fault code label.

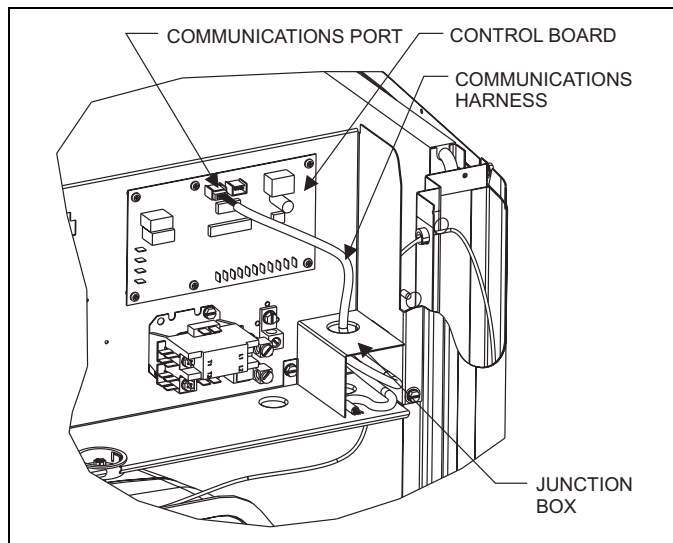


FIGURE 1: Control Box

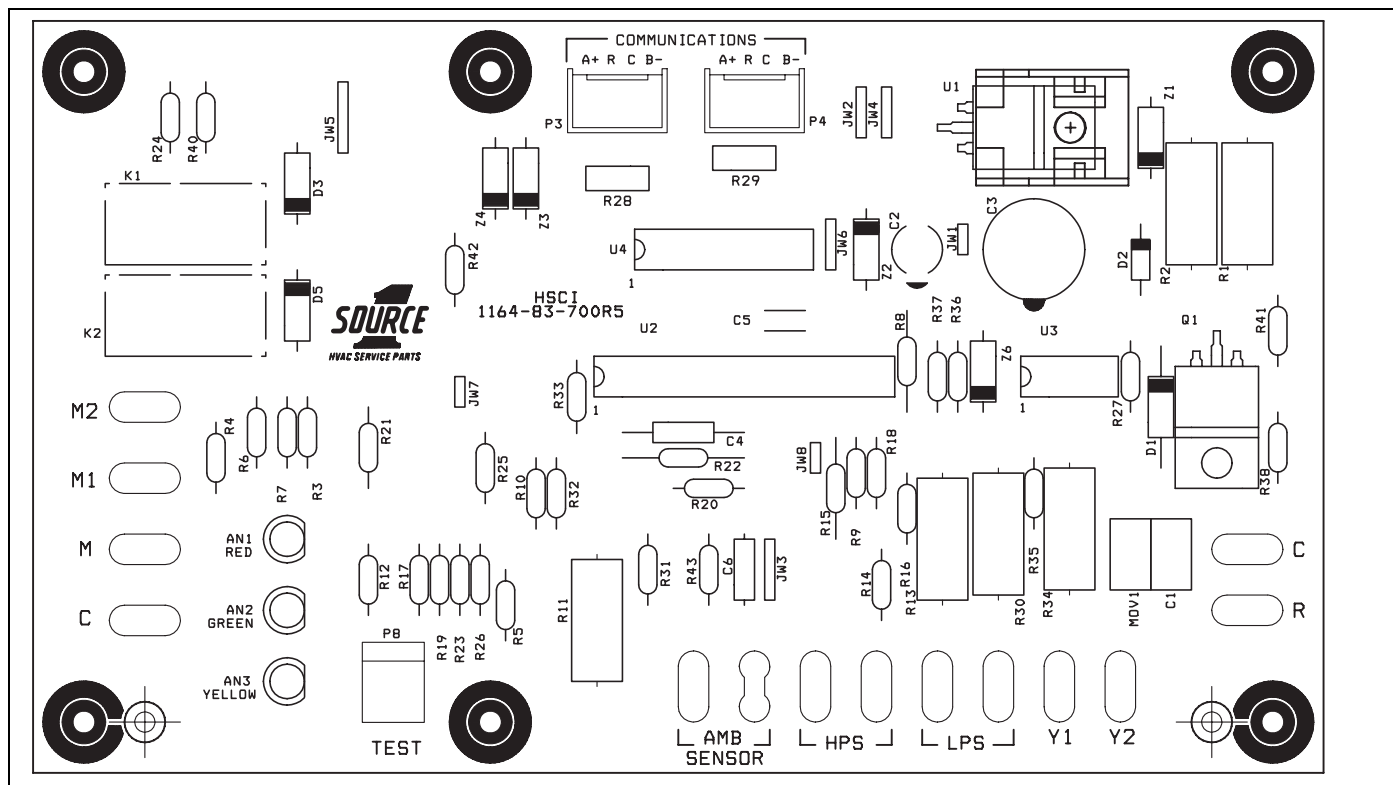


FIGURE 2: AC Communicating Control Module

Subject to change without notice. Published in U.S.A.
Copyright © 2009 by Johnson Controls, Inc. All rights reserved.

035-22257-001-A-0909
Supersedes: Nothing

Johnson Controls Unitary Products
5005 York Drive
Norman, OK 7306