

MANUFACTURED FOR:  
MITSUBISHI ELECTRIC US, INC.

Air Conditioners

**PAA-A18, 24, 30, 36, 42AA1/BA1/CA1 and all-  service reference models**

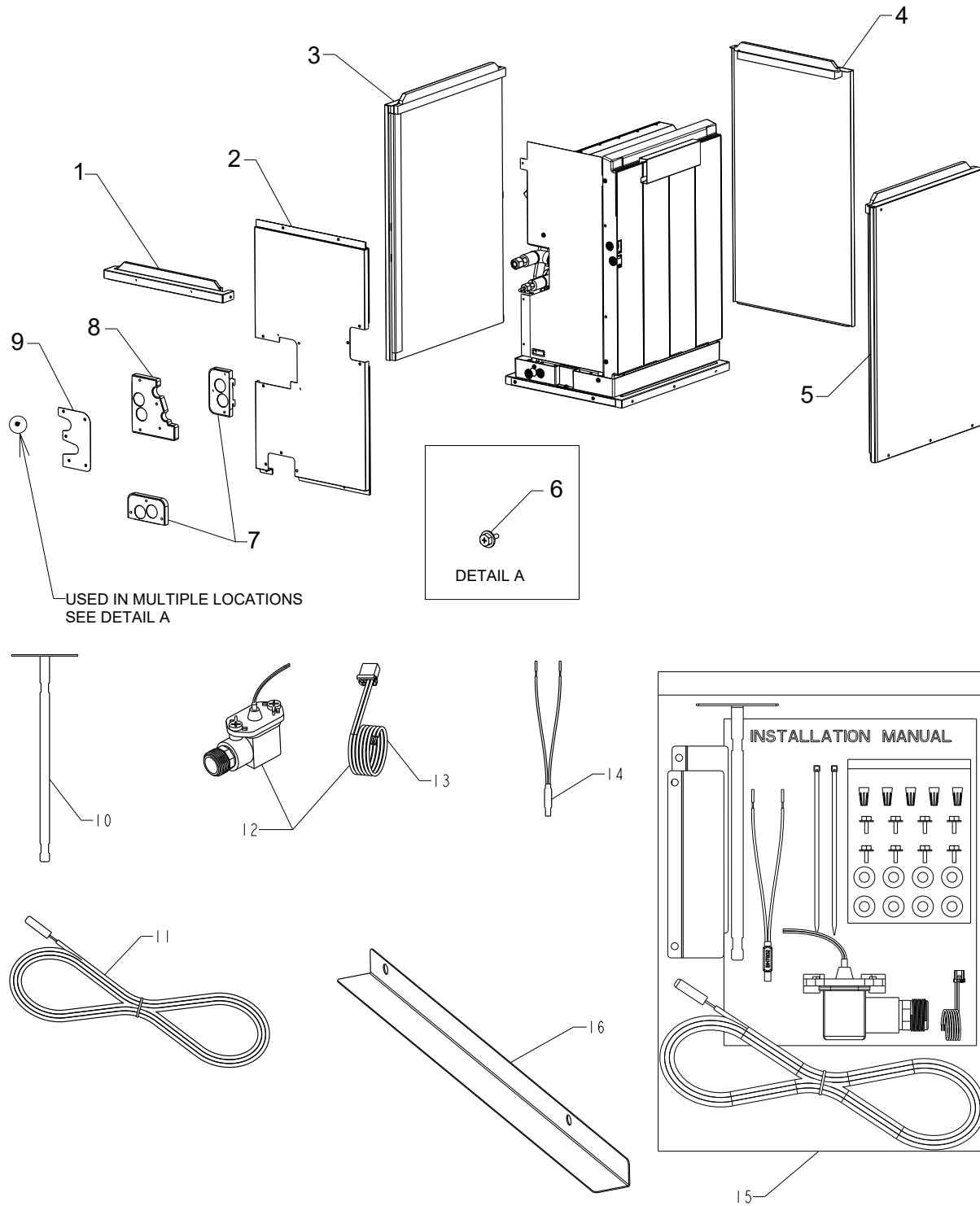
---

SERVICE PARTS MANUAL

# Table of Contents

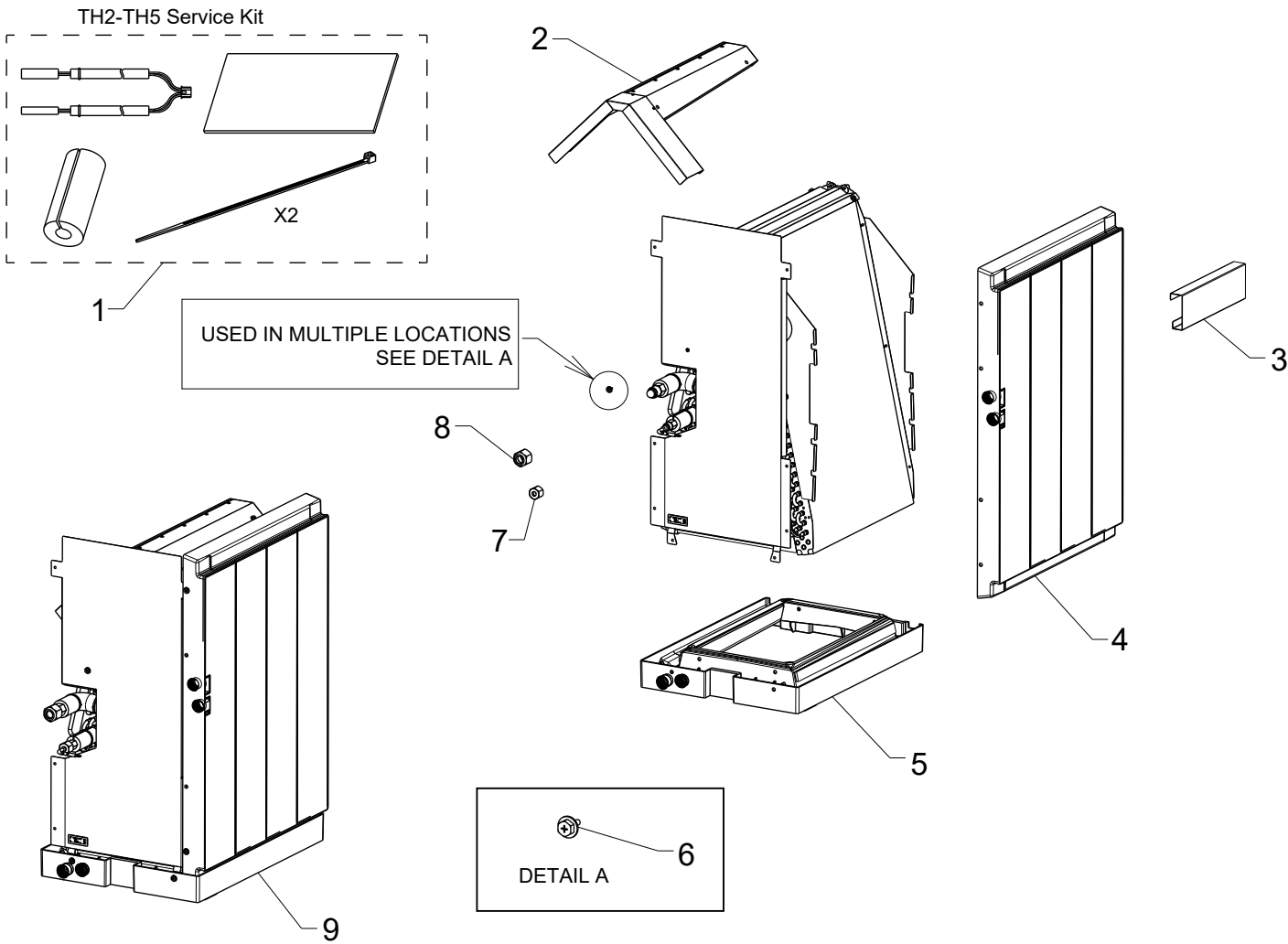
- 1. EXTERNAL PARTS ..... 3
- 2. HEX ASSEMBLY PARTS ..... 5
- 3. CONTROL BOX PARTS ..... 7

# 1. EXTERNAL PARTS



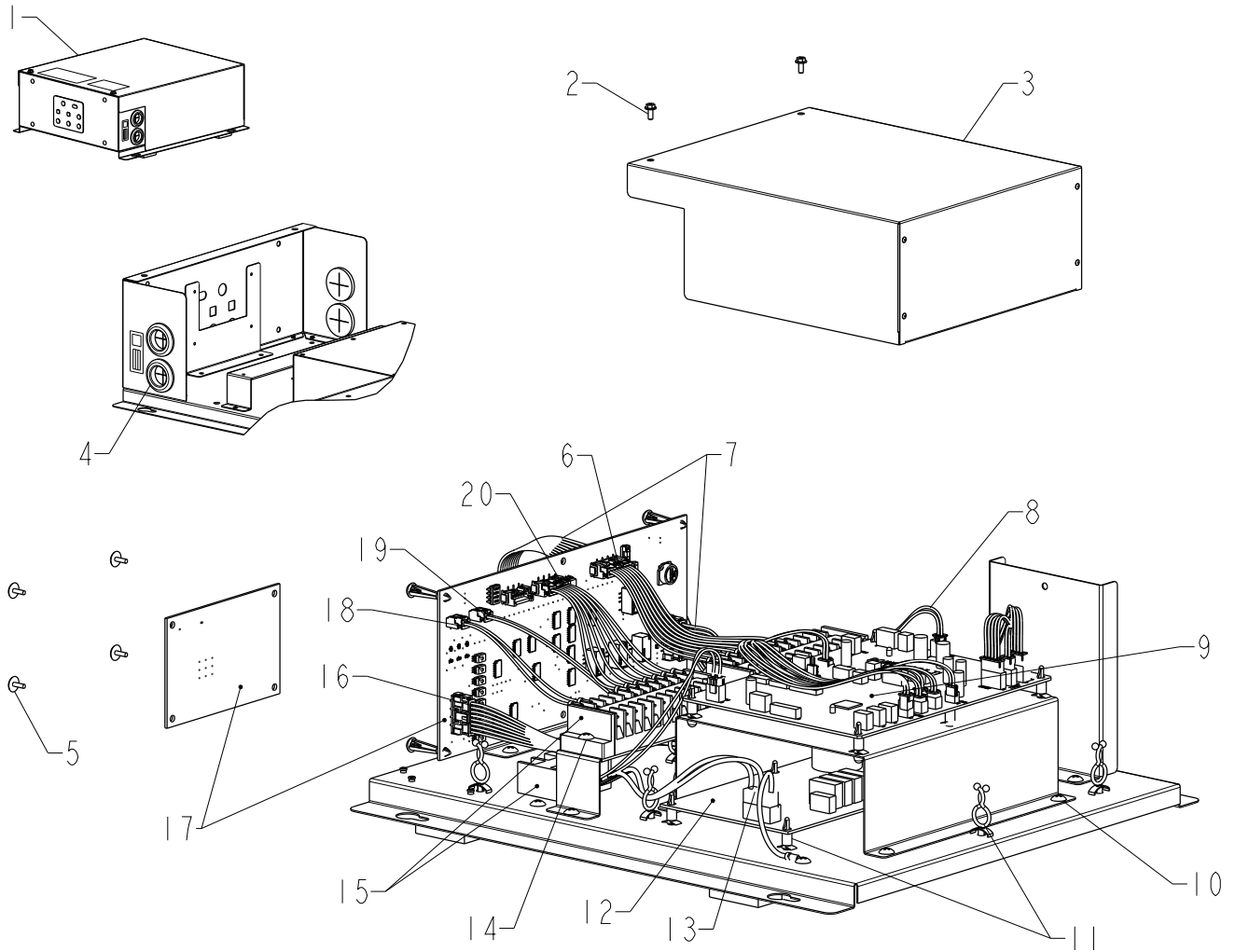
| No. | Service Part No. | Part Name                                | Symbol in Wiring Diagram | Quantity per unit |       |       |       |       |       |       |       |       |       | Remarks   |
|-----|------------------|--|--------------------------|-------------------|-------|-------|-------|-------|-------|-------|-------|-------|-------|---|
|     |                  |  |                          | PAA-A             |       |       |       |       |       |       |       |       |       |   |
|     |                  |  |                          | 18AA1             | 18BA1 | 24AA1 | 24BA1 | 30AA1 | 30BA1 | 36BA1 | 36CA1 | 42BA1 | 42CA1 |   |
| 1   | U41 011 668      | TOP COVER ASSY 14.5                      |                          | 1                 |       | 1     |       | 1     |       |       |       |       |       |   |
|     | U41 012 668      | TOP COVER ASSY 17.5                      |                          |                   | 1     |       | 1     |       | 1     | 1     |       | 1     |       |   |
|     | U41 013 668      | TOP COVER ASSY 21                        |                          |                   |       |       |       |       |       |       | 1     |       | 1     |   |
| 2   | U41 006 639      | FRONT PANEL ASSY 14.5M                   |                          | 1                 |       | 1     |       | 1     |       |       |       |       |       | NOTE: The nameplate must be removed from the original front panel and placed on the new front panel. Document the model and serial number before removing nameplate and contact distributor for a replacement nameplate if necessary. |
|     | U41 007 639      | FRONT PANEL ASSY 17.5M                   |                          |                   | 1     |       | 1     |       | 1     |       |       |       |       |   |
|     | U41 008 639      | FRONT PANEL ASSY 17.5L                   |                          |                   |       |       |       |       |       | 1     |       | 1     |       |   |
|     | U41 009 639      | FRONT PANEL ASSY 21L                     |                          |                   |       |       |       |       |       |       | 1     |       | 1     |   |
| 3   | U41 023 638      | LEFT PANEL ASSY, MED                     |                          | 1                 | 1     | 1     | 1     | 1     | 1     |       |       |       |       |   |
|     | U41 024 638      | LEFT PANEL ASSY, LARGE                   |                          |                   |       |       |       |       |       | 1     | 1     | 1     | 1     |   |
| 4   | U41 019 638      | BACK PANEL ASSY 145M                     |                          | 1                 |       | 1     |       | 1     |       |       |       |       |       |   |
|     | U41 020 638      | BACK PANEL ASSY 175M                     |                          |                   | 1     |       | 1     |       | 1     |       |       |       |       |   |
|     | U41 021 638      | BACK PANEL ASSY 175L                     |                          |                   |       |       |       |       |       | 1     |       | 1     |       |   |
|     | U41 022 638      | BACK PANEL ASSY 21L                      |                          |                   |       |       |       |       |       |       | 1     |       | 1     |   |
| 5   | U41 025 638      | RIGHT PANEL ASSY, MED                    |                          | 1                 | 1     | 1     | 1     | 1     | 1     |       |       |       |       |   |
|     | U41 018 638      | RIGHT PANEL ASSY, LARGE                  |                          |                   |       |       |       |       |       | 1     | 1     | 1     | 1     |   |
| 6   | U41 008 087      | SCREW H 5X10 KNURLED                     |                          | 30                | 30    | 30    | 30    | 30    | 30    | 30    | 30    | 30    | 30    | Pack of 10  |
| 7   | U41 013 635      | PANEL PIPE ASSY                          |                          | 2                 | 2     | 2     | 2     | 2     | 2     | 2     | 2     | 2     | 2     |   |
| 8   | U41 011 635      | PANEL PIPE ASSY                          |                          | 1                 | 1     | 1     | 1     | 1     | 1     | 1     | 1     | 1     | 1     |   |
| 9   | U41 012 635      | PANEL PIPE ASSY                          |                          | 1                 | 1     | 1     | 1     | 1     | 1     | 1     | 1     | 1     | 1     |   |
| 10  | U71 001 086      | SENSOR BRACKET                           |                          | 1                 | 1     | 1     | 1     | 1     | 1     | 1     | 1     | 1     | 1     | Also included in Accessory Bag, Item 15   |
| 11  | U71 002 200      | THERMISTOR 8MM                           | TH1                      | 1                 | 1     | 1     | 1     | 1     | 1     | 1     | 1     | 1     | 1     | Also included in Accessory Bag, Item 15   |
| 12  | U41 003 541      | FLOAT SWITCH<br>+<br>LEAD WIRE ASSY CN4F | CN4F                     | 1                 | 1     | 1     | 1     | 1     | 1     | 1     | 1     | 1     | 1     | Includes Lead Wire CN4F<br>Also included in Accessory Bag, Item 15  |
| 13  | U41 015 392      | LEAD WIRE ASSY CN4F                      | CN4F                     | 1                 | 1     | 1     | 1     | 1     | 1     | 1     | 1     | 1     | 1     | This part is included in U41003541, Float Switch + LEAD WIRE service part kit.<br>Also included in Accessory Bag, Item 15   |
| 14  | U41 010 200      | THERMOSTAT (NAT)                         | TB-B                     | 1                 | 1     | 1     | 1     | 1     | 1     | 1     | 1     | 1     | 1     | Also included in Accessory Bag, Item 15   |
| 15  | U41 009 818      | ACCESSORY BAG, PAA                       |                          | 1                 | 1     | 1     | 1     | 1     | 1     | 1     | 1     | 1     | 1     |   |
| 16  | U41 004 130      | L BRACKET 14.5                           |                          | 1                 |       | 1     |       | 1     |       |       |       |       |       |   |
|     | U41 005 130      | L BRACKET 17.5                           |                          |                   | 1     |       | 1     |       | 1     | 1     |       | 1     |       |   |
|     | U41 006 130      | L BRACKET 21                             |                          |                   |       |       |       |       |       |       | 1     |       | 1     |   |

## 2. HEX ASSEMBLY PARTS



| No. | Service Part No. | Part Name                 | Symbol in Wiring Diagram | Quantity per unit |       |       |       |       |       |       |       |       |       | Remarks   |
|-----|------------------|---------------------------|--------------------------|-------------------|-------|-------|-------|-------|-------|-------|-------|-------|-------|---|
|     |                  |                           |                          | PAA-A             |       |       |       |       |       |       |       |       |       |   |
|     |                  |                           |                          | 18AA1             | 18BA1 | 24AA1 | 24BA1 | 30AA1 | 30BA1 | 36BA1 | 36CA1 | 42BA1 | 42CA1 |   |
| 1   | U41 009 200      | TH2-TH5 SERVICE KIT, PAA  |                          | 1                 | 1     | 1     | 1     | 1     | 1     | 1     | 1     | 1     | 1     | Includes TH2-TH5 Wire Assy, 2 different Insulator Pipe Covers, and 2 ties ALL OF WHICH ARE SPECIFIED FOR USE IN THE PAA HIGH TEMP AREAS |
| 2   | U41 007 668      | TOP PLATE DR ASSY, S      |                          | 1                 | 1     |       |       |       |       |       |       |       |       |   |
|     | U41 008 668      | TOP PLATE DR ASSY, L      |                          |                   |       | 1     | 1     | 1     | 1     |       |       |       |       |   |
|     | U41 009 668      | TOP PLATE DR ASSY, L-B    |                          |                   |       |       |       |       |       | 1     |       | 1     |       |   |
|     | U41 010 668      | TOP PLATE DR ASSY, L-C    |                          |                   |       |       |       |       |       |       | 1     |       | 1     |   |
| 3   | U41 019 529      | SIDE PAN BRACKET          |                          | 1                 | 1     | 1     | 1     | 1     | 1     | 1     | 1     | 1     | 1     |   |
| 5   | U41 014 529      | DRAIN PAN ASSY LOWER 14.5 |                          | 1                 |       | 1     |       | 1     |       |       |       |       |       |   |
|     | U41 015 529      | DRAIN PAN ASSY LOWER 17.5 |                          |                   | 1     |       | 1     |       | 1     | 1     |       | 1     |       |   |
|     | U41 016 529      | DRAIN PAN ASSY LOWER 21   |                          |                   |       |       |       |       |       |       | 1     |       | 1     |   |
| 4   | U41 017 529      | DRAIN PAN ASSY SIDE, S    |                          | 1                 | 1     | 1     | 1     | 1     | 1     |       |       |       |       |   |
|     | U41 018 529      | DRAIN PAN ASSY SIDE, L    |                          |                   |       |       |       |       |       | 1     | 1     | 1     | 1     |   |
| 6   | U41 010 087      | SCREW WFT 5X12            |                          | 12                | 12    | 14    | 14    | 14    | 14    | 18    | 18    | 18    | 18    | Pack of 10<br>Also used in the Control Box  |
| 7   | U41 002 122      | NUT FLARE 3/8             |                          |                   |       | 1     | 1     | 1     | 1     | 1     | 1     | 1     | 1     |   |
|     | U41 004 122      | NUT FLARE 1/4             |                          | 1                 | 1     |       |       |       |       |       |       |       |       |   |
| 8   | U41 003 122      | NUT FLARE 1/2F            |                          | 1                 | 1     |       |       |       |       |       |       |       |       |   |
|     | U41 001 122      | NUT FLARE 5/8             |                          |                   |       | 1     | 1     | 1     | 1     | 1     | 1     | 1     | 1     |   |
| 9   | U41 043 480      | HEX ASSY 14.5S PAA        |                          | 1                 |       |       |       |       |       |       |       |       |       | Includes all parts on this page (TH2-TH5 wire assembly is pre-installed)  |
|     | U41 044 480      | HEX ASSY 17.5S PAA        |                          |                   | 1     |       |       |       |       |       |       |       |       | Includes all parts on this page (TH2-TH5 wire assembly is pre-installed)  |
|     | U41 039 480      | HEX ASSY 14.5M PAA        |                          |                   |       | 1     |       | 1     |       |       |       |       |       | Includes all parts on this page (TH2-TH5 wire assembly is pre-installed)  |
|     | U41 040 480      | HEX ASSY 17.5M PAA        |                          |                   |       |       | 1     |       | 1     |       |       |       |       | Includes all parts on this page (TH2-TH5 wire assembly is pre-installed)  |
|     | U41 041 480      | HEX ASSY 17.5L PAA        |                          |                   |       |       |       |       |       | 1     |       | 1     |       | Includes all parts on this page (TH2-TH5 wire assembly is pre-installed)  |
|     | U41 042 480      | HEX ASSY 21L PAA          |                          |                   |       |       |       |       |       |       | 1     |       | 1     | Includes all parts on this page (TH2-TH5 wire assembly is pre-installed)  |

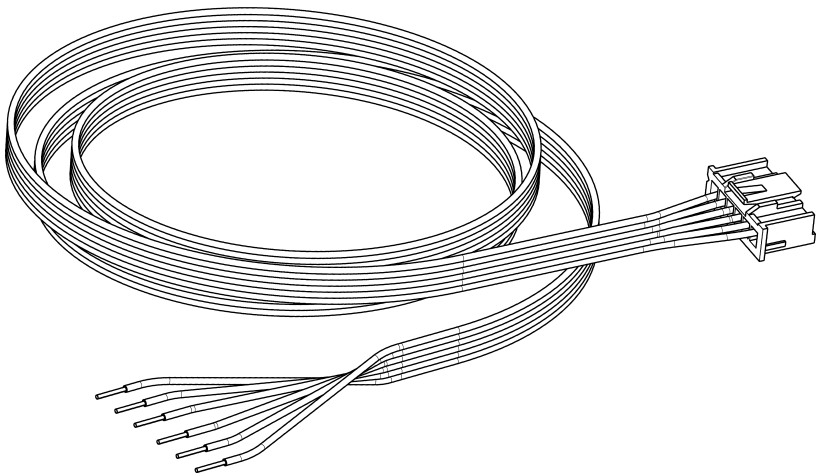
### 3. CONTROL BOX PARTS



| No. | Service Part No. | Part Name                      | Symbol in Wiring Diagram | Quantity per unit |         |         |         |         |         |         |         |         |         | Remarks  |
|-----|------------------|--------------------------------|--------------------------|-------------------|---------|---------|---------|---------|---------|---------|---------|---------|---------|--|
|     |                  |                                |                          | PAA-A             |         |         |         |         |         |         |         |         |         |  |
|     |                  |                                |                          | 18AA1             | 18BA1   | 24AA1   | 24BA1   | 30AA1   | 30BA1   | 36BA1   | 36CA1   | 42BA1   | 42CA1   |  |
| 1   | U41 005 812      | Control Box Assy 18            |                          | 1                 | 1       |         |         |         |         |         |         |         |         |  |
|     | U41 006 812      | Control Box Assy 24            |                          |                   |         | 1       | 1       |         |         |         |         |         |         |  |
|     | U41 007 812      | Control Box Assy 30            |                          |                   |         |         |         | 1       | 1       |         |         |         |         |  |
|     | U41 008 812      | Control Box Assy 36            |                          |                   |         |         |         |         |         | 1       | 1       |         |         |  |
|     | U41 009 812      | Control Box Assy 42            |                          |                   |         |         |         |         |         |         |         | 1       | 1       |  |
| 2   | U41 010 087      | SCREW WFT 5X12                 |                          | 2                 | 2       | 2       | 2       | 2       | 2       | 2       | 2       | 2       | 2       | Pack of 10<br>Also used in the HEX assemblies.   |
| 3   | U41 010 812      | CONTROL BOX COVER              |                          | 1                 | 1       | 1       | 1       | 1       | 1       | 1       | 1       | 1       | 1       |  |
| 4   | U41 003 104      | BUSHING                        |                          | 4                 | 4       | 4       | 4       | 4       | 4       | 4       | 4       | 4       | 4       | Pack of 2  |
| 5   | INFO ONLY        | SCREW M4 x 8                   |                          | 4                 | 4       | 4       | 4       | 4       | 4       | 4       | 4       | 4       | 4       | FIELD SUPPLIED   |
| 6   | U41 019 392      | LEAD WIRE ASSY CNH04           | CNH04                    | 1                 | 1       | 1       | 1       | 1       | 1       | 1       | 1       | 1       | 1       |  |
| 7   | U41 022 392      | LEAD WIRE ASSY CNH07           | CNH07                    | 1                 | 1       | 1       | 1       | 1       | 1       | 1       | 1       | 1       | 1       |  |
| 8   | U41 023 392      | LEAD WIRE ASSY CN22            | CN22                     | 1                 | 1       | 1       | 1       | 1       | 1       | 1       | 1       | 1       | 1       |  |
| 9   | U41 012 280      | PCBA IDU CTL BRD               |                          | 1                 | 1       | 1       | 1       | 1       | 1       | 1       | 1       | 1       | 1       |  |
| 10  | INFO ONLY        | SCREW M4 x 10                  |                          | 12                | 12      | 12      | 12      | 12      | 12      | 12      | 12      | 12      | 12      | FIELD SUPPLIED   |
| 11  | U41 001 145      | CLIPS & SUPPORTS               |                          | 10 & 13           | 10 & 13 | 10 & 13 | 10 & 13 | 10 & 13 | 10 & 13 | 10 & 13 | 10 & 13 | 10 & 13 | 10 & 13 | Pack of 5 each: clips & supports.  |
| 12  | U41 005 280      | PCA INDOOR POWER               |                          | 1                 | 1       | 1       | 1       | 1       | 1       | 1       | 1       | 1       | 1       |  |
| 13  | U41 024 392      | LEAD WIRE ASSY POWER           | CND                      | 1                 | 1       | 1       | 1       | 1       | 1       | 1       | 1       | 1       | 1       |  |
| 14  | INFO ONLY        | SCREW M4 X20                   |                          | 5                 | 5       | 5       | 5       | 5       | 5       | 5       | 5       | 5       | 5       | FIELD SUPPLIED   |
| 15  | U41 006 246      | TERMINAL BLOCK, BED, LABEL KIT | TB-A<br>TB-B<br>TB-C     | 1                 | 1       | 1       | 1       | 1       | 1       | 1       | 1       | 1       | 1       | Includes qty 1 terminal bed, qty 2 Terminal Blocks, qty 1 label  |
| 16  | U41 016 392      | LEAD WIRE ASSY CNH01           | CNH01                    | 1                 | 1       | 1       | 1       | 1       | 1       | 1       | 1       | 1       | 1       |  |
| 17  | U41 001 225      | PAA RELAY AND UI BD ASSEMBLIES |                          | 1                 | 1       | 1       | 1       | 1       | 1       | 1       | 1       | 1       | 1       |  |
| 18  | U41 020 392      | LEAD WIRE ASSY CNH05           | CNH05                    | 1                 | 1       | 1       | 1       | 1       | 1       | 1       | 1       | 1       | 1       |  |
| 19  | U41 021 392      | LEAD WIRE ASSY CNH06           | CNH06                    | 1                 | 1       | 1       | 1       | 1       | 1       | 1       | 1       | 1       | 1       |  |
| 20  | U41 018 392      | LEAD WIRE ASSY CNH03           | CNH03                    | 1                 | 1       | 1       | 1       | 1       | 1       | 1       | 1       | 1       | 1       |  |
| -   | U41 015 392      | LEAD WIRE ASSY CN4F            | CN4F                     | 1                 | 1       | 1       | 1       | 1       | 1       | 1       | 1       | 1       | 1       | This part is shown in the External Service Parts section. It is available individually, as part of the Float Switch + LEAD WIRE kit, and as part of the Accessory Bag. |



Optional Items



| OPTIONAL ITEMS       |             |  |                          |                                     |
|----------------------|-------------|--|--------------------------|-------------------------------------|
| Part Name            | Part Number | Remarks  | Symbol in Wiring Diagram | Models                              |
| LEAD WIRE ASSY CNH02 | U41 017 392 | Optional for connection to<br>Thermostat Interface 2, PAC-US445CN*.<br>(This part is included with PAC-US445CN*) | CNH02                    | Optional use with<br>all PAA Models |

---

This product is designed and intended for use in the residential and commercial environment.

Please be sure to put the contact address/telephone number on this manual before handing it to the customer.



Manufactured for:  
**mitsubishi electric us, inc.**

[www.mitsubishielectric-usa.com](http://www.mitsubishielectric-usa.com)

Toll Free: 800-433-4822