

**PKA-A30KA7 & PUY-A30NHA7-BS**  
**30,000 BTU/H WALL-MOUNTED INDOOR UNIT**  
**30,000 BTU/H COOLING ONLY OUTDOOR**



Job Name:

System Reference:

Date:



Indoor Unit.....PKA-A30KA7

Outdoor Unit.....PUY-A30NHA7-BS



**INDOOR UNIT FEATURES**

- Sleek, compact design
- Simple installation
- Vane setting for air flow direction control
- Auto fan speed mode
- Ideal for spaces such as server rooms, daycare centers, classrooms, churches, small offices, and more
- Multiple control options available:
  - kumo cloud® smart device app for remote access
  - Third-party interface options
  - Wired or wireless controllers

**OUTDOOR UNIT FEATURES**

- Variable speed INVERTER-driven compressor
- Power receiver pre-charged with refrigerant volume for piping length up to 70 ft
- Low ambient cooling down to -40°F providing 100% capacity (with wind baffles)
- 24-hour continuous operation (cooling mode)
- High pressure protection
- Fast restart
- Superior energy and operational efficiency
- Seacoast protection on heat exchanger and base panel (rated for 2,000 hours in accordance with ASTM B117 testing)

# SPECIFICATIONS: PKA-A30KA7 & PUY-A30NHA7-BS

|  |  |                     |  |
|--|--|---------------------|--|
| Cooling at 95°F <sup>1</sup>             | Maximum Capacity   | BTU/H               | 30,000   |
|  | Rated Capacity   | BTU/H               | 30,000   |
|  | Minimum Capacity   | BTU/H               | 9,000  |
|  | Maximum Power Input  | W                   | 3,150  |
|  | Rated Power Input  | W                   | 3,150  |
|  | Moisture Removal   | Pints/h             | 8.1  |
|  | Sensible Heat Factor                                       |                     | 0.70   |
|  | Power Factor [208V / 230V]                                 | %                   | 96.4 / 96.4  |
| Efficiency                               | SEER   |                     | 19.8   |
|  | EER <sup>1</sup>   |                     | 9.5  |
|  | ENERGY STAR® Certified                                     |                     | No   |
| Electrical                               | Voltage, Phase, Frequency                                  |                     | 208/230, 1, 60   |
|  | Guaranteed Voltage Range                                   | V AC                | 198 - 253  |
|  | Voltage: Indoor - Outdoor, S1-S2                           | V AC                | 208/230  |
|  | Voltage: Indoor - Outdoor, S2-S3                           | V DC                | 24   |
|  | Short-circuit Current Rating [SCCR]                        | kA                  | 5  |
|  | Recommended Fuse/Breaker Size (Outdoor)                    | A                   | 25   |
|  | Recommended Wire Size [Indoor - Outdoor]                   | AWG                 | 14   |
|  | Power Supply   |                     | Indoor unit is powered by the outdoor unit               |
| Indoor Unit                              | MCA  | A                   | 1.0  |
|  | Fan Motor Full Load Amperage                               | A                   | 0.36   |
|  | Fan Motor Type   |                     | DC Motor   |
|  | Airflow Rate at Cooling, Dry                               | CFM                 | 635–705–775  |
|  | Airflow Rate at Cooling, Wet                               | CFM                 | 570–635–700  |
|  | Airflow Rate at Heating, Dry                               | CFM                 | 635–705–775  |
|  | Sound Pressure Level [Cooling]                             | dB[A]               | 39–42–45   |
|  | Sound Pressure Level [Heating]                             | dB[A]               | 39–42–45   |
|  | Drain Pipe Size  | In. [mm]            | 5/8 [16]   |
|  | Coating on Heat Exchanger                                  |                     | —  |
|  | External Finish Color                                      |                     | White Munsell 1.0Y 9.2/0.2                               |
|  | Unit Dimensions  | W x D x H: In. [mm] | 46-1/16 x 11-5/8 x 14-3/8 [1,170 x 295 x 365]            |
|  | Package Dimensions   | W x D x H: In. [mm] | 51 x 14-1/4 x 18-1/2 [1,295 x 362 x 470]                 |
|  | Unit Weight  | Lbs. [kg]           | 46 [21]  |
|  | Package Weight   | Lbs. [kg]           | 53 [24]  |
| Indoor Unit Operating Temperature Range  | Cooling Intake Air Temp [Maximum / Minimum]*               | °F                  | 90 DB, 72 WB / 66 DB, 61 WB                              |
|  | Heating Intake Air Temp [Maximum / Minimum]                | °F                  | 77 DB / 59 DB  |
| Outdoor Unit                             | MCA  | A                   | 19.0   |
|  | MOCP   | A                   | 26   |
|  | Fan Motor Full Load Amperage                               | A                   | 0.4  |
|  | Fan Motor Output   | W                   | 86   |
|  | Airflow Rate [Cooling / Heating]                           | CFM                 | 1940   |
|  | Refrigerant Control  |                     | LEV  |
|  | Defrost Method   |                     | Reverse Cycle  |
|  | Coating on Heat Exchanger                                  |                     | Blue Fin Coating (BS Model only)                         |
|  | Sound Pressure Level, Cooling <sup>1</sup>                 | dB(A)               | 47   |
|  | Compressor Type  |                     | INVERTER-driven twin rotary                              |
|  | Compressor Model   |                     | SNB172FWHM1  |
|  | Compressor Rated Load Amps                                 | A                   | 7  |
|  | Compressor Locked Rotor Amps                               | A                   | 11.0   |
|  | Compressor Oil [Type // Charge]                            | oz.                 | FV50S // 23  |
|  | External Finish Color                                      |                     | Ivory Munsell 3Y 7.8/1.1                                 |
|  | Base Pan Heater  |                     | N/A  |
|  | Unit Dimensions  | W x D x H: In. [mm] | 37-13/32 x 13 (+1-3/16) x 37-1/8 [950 x 330 (+30) x 943] |
|  | Package Dimensions   | W x D x H: In. [mm] | 40-15/16 x 17-11/16 x 40-11/16 [1040 x 450 x 1033]       |
|  | Unit Weight  | Lbs. [kg]           | 151 [68]   |
|  | Package Weight   | Lbs. [kg]           | 176 [80]   |
| Outdoor Unit Operating Temperature Range | Cooling Air Temp [Maximum / Minimum]*                      | °F                  | 115 DB / -40 DB  |
| Refrigerant                              | Maximum Charge Quantity                                    | Lbs, oz             | 7.0, 11.0  |
|  | Initial Charge Quantity                                    | Ft. [m]             | 70.0 [20.0]  |
|  | Additional Refrigerant Charge Per Additional Piping Length | oz./Ft. [g/m]       | 0.3 [22.5]   |
| Piping                                   | Gas Pipe Size O.D. [Flared]                                | In.[mm]             | 5/8 [15.88]  |
|  | Liquid Pipe Size O.D. [Flared]                             | In.[mm]             | 3/8 [9.52]   |
|  | Maximum Piping Length                                      | Ft. [m]             | 225 [68]   |
|  | Maximum Height Difference                                  | Ft. [m]             | 100 [30]   |
|  | Maximum Number of Bends                                    |                     | 15   |

## NOTES:

AHRI Rated Conditions

(Rated data is determined at a fixed compressor speed) <sup>1</sup>Cooling (Indoor // Outdoor) °F 80 DB, 67 WB // 95 DB, 75 WB

\*Indoor/Outdoor Unit Operating Temperature Range (Cooling Air Temp [Maximum / Minimum]):

- Wind baffles required to operate below 23°F DB in cooling mode.
- Cooling-only system with advanced wind baffle: -40°F - 115°F.
- Refer to wind baffle documentation for further information.

\*\*Outdoor Unit Operating Temperature Range (Cooling Thermal Lock-out / Re-start Temperatures; Heating Thermal Lock-out / Re-start Temperatures):

- System cuts out in heating mode to avoid thermistor error and automatically restarts at these temperatures.

## INDOOR UNIT ACCESSORIES: PKA-A30KA7

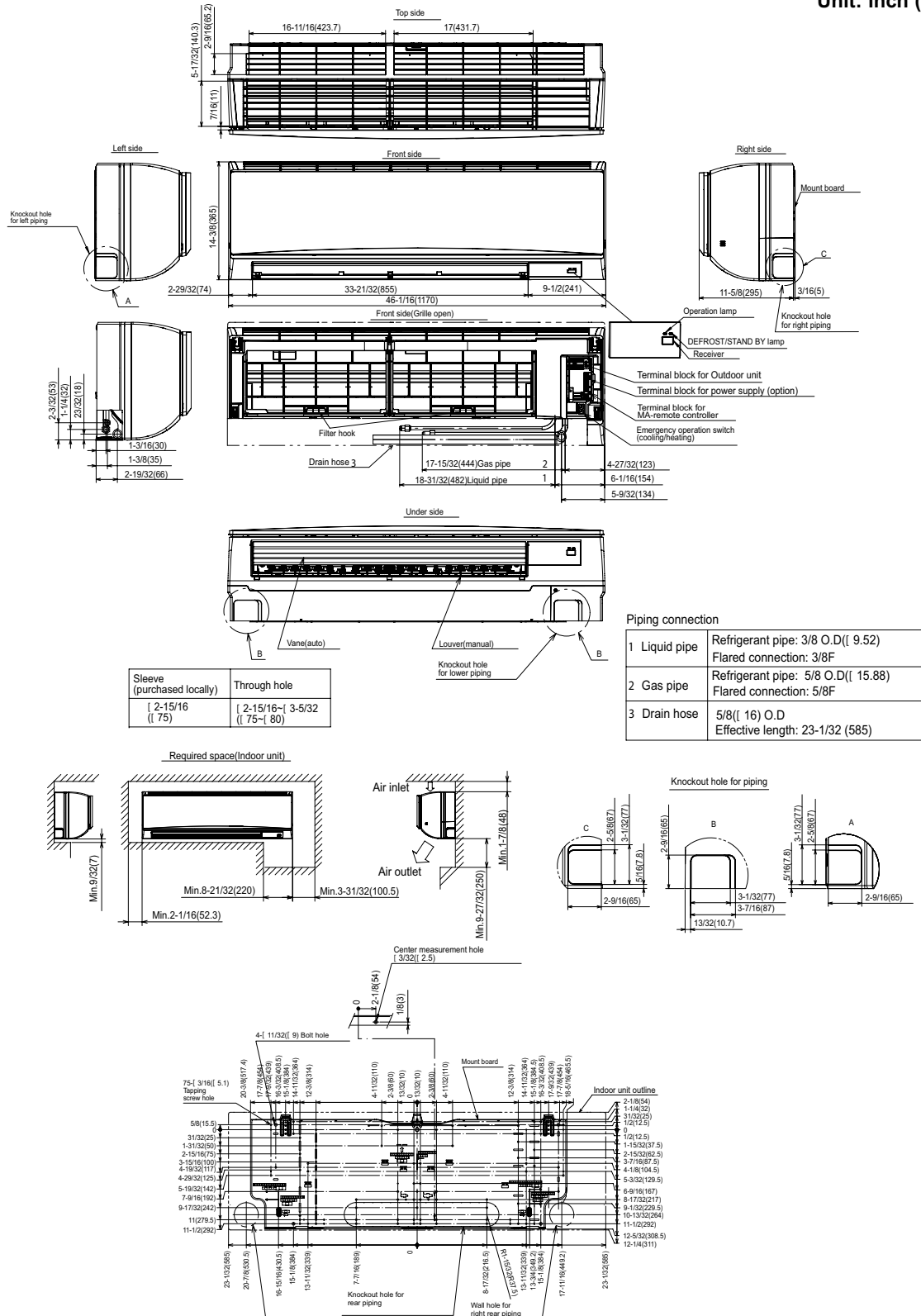
|                            |   |                   |
|----------------------------|---|-------------------|
| Control Interface          | 3-Pin Connector   | PAC-715AD         |
|                            | BACnet® and Modbus® Interface   | PAC-UKPRC001-CN-1 |
|                            | IT Extender   | PAC-WHS01IE-E     |
|                            | kumo station® for kumo cloud®   | PAC-WHS01HC-E     |
|                            | Lockdown bracket for remote controller  | RCMKP1CB          |
|                            | Thermostat Interface  | PAC-US444CN-1     |
|                            | Thermostat Interface  | PAC-US445CN-1     |
|                            | USNAP Adapter   | PAC-WHS01UP-E     |
|                            | Wireless Interface for kumo cloud®  | PAC-USWHS002-WF-2 |
| Remote Sensor              | Flush Mount Remote Temperature Sensor   | PAC-USSEN002-FM-1 |
|                            | Flush Mount Temperature Sensor  | PAC-USSEN001-FM-1 |
|                            | Remote Temperature Sensor   | PAC-SE41TS-E      |
|                            | Wireless temperature and humidity sensor for kumo cloud®                                    | PAC-USWHS003-TH-1 |
| Wired Remote Controller    | Deluxe Wired MA Remote Controller†  | PAR-40MAAU        |
|                            | Simple MA Remote Controller†  | PAC-YT53CRAU-J    |
|                            | Touch MA Controller†  | PAR-CT01MAU-SB    |
| Wireless Remote Controller | kumo touch™ RedLINK™ Wireless Controller  | MHK2              |
|                            | Wireless MA Receiver  | PAR-FA32MA-W      |
|                            | Wireless MA Remote Controller   | PAR-FL32MA-E      |
| Condensate                 | Blue Diamond (Advanced) Mini Condensate Pump w/ Reservoir & Sensor (208/230V) [recommended] | X87-721           |
|                            | Blue Diamond (MegaBlue Advanced) Condensate Pump w/ Reservoir & Sensor                      | X87-835           |
|                            | Blue Diamond Sensor Extension Cable — 15 Ft.  | C13-103           |
|                            | Drain Pan Level Sensor/Control  | SS610E            |
|                            | Refco Condensate Pump (100-240 VAC)   | GOBI-II           |
|                            | Refco Condensate Pump (100-240 VAC) up to 120,000 BTU/H                                     | COMBI             |
|                            | Sauermann Condensate Pump   | SI30-230          |
| Disconnect Switch          | (30A/600V/UL) [fits 2" X 4" utility box] - Black  | TAZ-MS303         |
|                            | (30A/600V/UL) [fits 2" X 4" utility box] - White  | TAZ-MS303W        |
| Drain Hose                 | Flexible Mini-Split Drain Hose  | DRX-16            |
| Lineset                    | 10' x 3/8" x 10' x 5/8" Lineset (Twin-Tube Insulation)††                                    | MPLS385812T-10    |
|                            | 100' x 3/8" x 100' x 5/8" Lineset (Twin-Tube Insulation)††                                  | MPLS385812T-100   |
|                            | 15' x 3/8" x 15' x 5/8" Lineset (Twin-Tube Insulation)††                                    | MPLS385812T-15    |
|                            | 30' x 3/8" x 30' x 5/8" Lineset (Twin-Tube Insulation)††                                    | MPLS385812T-30    |
|                            | 50' x 3/8" x 50' x 5/8" Lineset (Twin-Tube Insulation)††                                    | MPLS385812T-50    |
|                            | 65' x 3/8" x 65' x 5/8" Lineset (Twin-Tube Insulation)††                                    | MPLS385812T-65    |

## OUTDOOR UNIT ACCESSORIES: PUY-A30NHA7-BS

|                       |  |              |
|-----------------------|--|--------------|
| Air Outlet Guide      | Air Outlet Guide (1 Piece)                                     | PAC-SG59SG-E |
| Centralized Drain Pan | Centralized Drain Pan  | PAC-SG63DP-E |
|                       | Drain Pan  | PAC-SG64DP-E |
| Control/Service Tool  | Control/Service Tool   | PAC-SK52ST   |
|                       | M- & P-Series Maintenance Tool Cable Set                       | M21EC0397    |
|                       | USB/UART Conversion Cable (Required for all laptop connection) | M21EC1397    |
| Hail Guards           | Hail Guard   | HG-A6        |
| M-NET Converter       | M-NET Converter  | PAC-SJ85MA-E |
|                       | M-NET Converter  | PAC-SJ95MA-E |
| Mounting Pad          | Condensing Unit Mounting Pad: 24" x 42" x 3"                   | ULTRILITE2   |
| Stand                 | 18" Single Fan Stand   | QSMS1801M    |
|                       | 24" Single Fan Stand   | QSMS2401M    |
|                       | Condenser Wall Bracket   | QSWB2000M-1  |
|                       | Condenser Wall Bracket - Stainless Steel Finish                | QSWBSS       |
|                       | Outdoor Unit Stand — 12" High                                  | QSMS1201M    |
| Wind Baffle           | Front Wind Baffle  | WB-PA5       |
|                       | Rear Wind Baffle   | WB-RE5       |
|                       | Side Advanced Wind Baffle                                      | WB-SD5       |

# INDOOR UNIT DIMENSIONS: PKA-A30KA7

Unit: inch (mm)

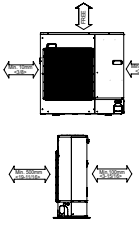


# OUTDOOR UNIT DIMENSIONS: PUY-A30NHA7-BS

Unit: mm<in>

## 1 FREE SPACE (Around the unit)

The diagram below shows a basic example.  
Explanation of particular details are given in the installation manuals etc.



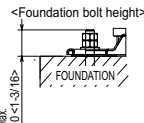
## 2 SERVICE SPACE

Dimensions of space needed for service access are shown in the below diagram.



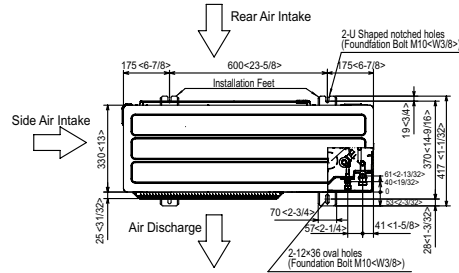
## 3 FOUNDATION BOLTS

Please secure the unit firmly with 4 foundation (M10<W3/8>) bolts. (Bolts and washers must be purchased locally.)



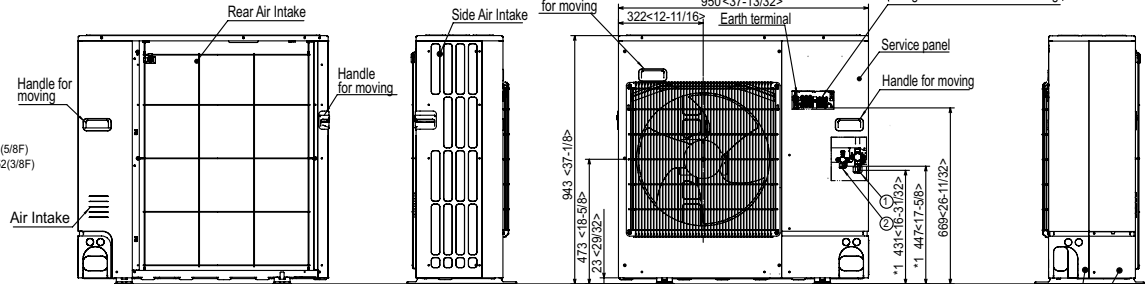
## 4 PIPING-WIRING DIRECTIONS

Piping and wiring connections can be made from 4 directions: FRONT, Right, Rear and Below.

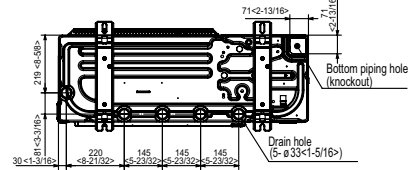
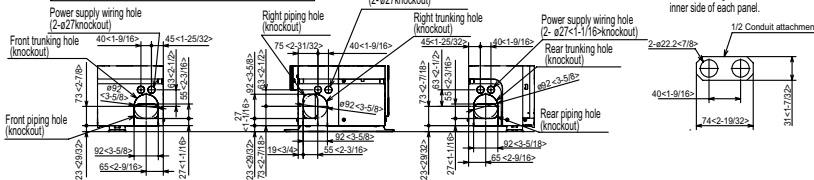


## Example of Notes

- ① --- Refrigerant GAS pipe connection (FLARE) ø15.88(5/8F)
- ② --- Refrigerant LIQUID pipe connection (FLARE) ø9.52(3/8F)
- \*1 --- Indication of STOP VALVE connection location.



## Piping knockout Hole Details



1340 Satellite Boulevard Suwanee, GA 30024  
Toll Free: 800-433-4822 www.mehvac.com

FORM# PKA-A30KA7 & PUY-A30NHA7-BS - 202211

