

February 2020

No. OCD699
REVISED EDITION-A

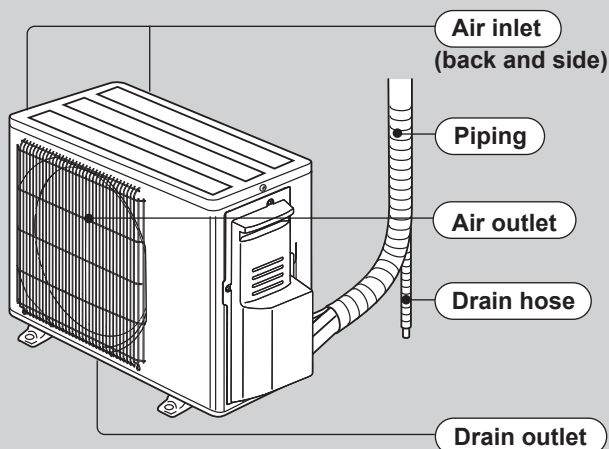
TECHNICAL DATA

R410A
Outdoor unit
[Model Name]
SUZ-KA09NA2
SUZ-KA09NAH2
SUZ-KA12NA2
SUZ-KA12NAH2
SUZ-KA15NA2
SUZ-KA15NAH2
[Service Ref.]
SUZ-KA09NA2.MX
SUZ-KA09NAH2.MX
SUZ-KA12NA2.MX
SUZ-KA12NAH2.MX
SUZ-KA15NA2.MX
SUZ-KA15NAH2.MX

Revision:

- Some descriptions have been modified in REVISED EDITION-A.

OCD699 is void.


SUZ-KA09NA(H)2.MX

CONTENTS

1. SPECIFICATION.....	2
2. POSITION OF THE CENTER OF GRAVITY.....	6
3. CORRECTION FACTORS.....	6
4. DATA.....	7
5. CAPACITY CORRECTION RATIO CURVE FOR PIPING LENGTH.....	8
6. PART LOAD CAPACITY CHART.....	9

SUZ-KA09NA(H)2.MX SUZ-KA12NA(H)2.MX SUZ-KA15NA(H)2.MX (SLZ Combination)

Model name	Indoor unit		SLZ-KF09NA	SLZ-KF12NA	SLZ-KF15NA
	Outdoor unit		SUZ-KA09NA(H)2	SUZ-KA12NA(H)2	SUZ-KA15NA(H)2
Cooling	Rated Capacity	Btu/h	9,000	12,000	14,100
	Capacity Range	Btu/h	3,600-9,000	3,900-12,000	5,100-14,100
	Total input	W	670	900	1,150
	Energy Efficiency	EER	13.4	13.3	12.2
		SEER	22.4	22.0	19.8
	Moisture Removal	Pints/h	1.0	2.8	3.2
	Sensible Heat Factor		0.87	0.74	0.75
Heating at 47°F	Rated Capacity	Btu/h	11,000	13,000	18,000
	Capacity Range	Btu/h	4,010-12,000	4,800-13,000	5,100-19,100
	Total input	W	810	1,310	1,730
	HSPF(Region IV)	Btu/h/W	12.2(11.5)	11.4(10.9)	11.2(10.9)
Heating at 17°F	Rated Capacity	Btu/h	6,900	8,900	11,900
	Rated Total input	W	810(940)	1,130(1,260)	1,290(1,420)
	Maximum Capacity	Btu/h	6,900	8,900	11,900
	Maximum Total Input	W	810(940)	1,130(1,260)	1,290(1,420)
Power supply	Voltage, Phase, Cycle		208/230V, 1-phase, 60Hz		
Voltage	Indoor - Outdoor S1-S2		AC 208/230V		
	Indoor - Outdoor S2-S3		DC12-24V		
	Indoor - Remote controller		DC12V		
Indoor unit	MCA	A	0.25	0.3	0.4
	Fan Motor	F.L.A	0.2	0.24	0.32
	Fan Motor Output	W	50		
	Air flow (Lo-Mid-Hi)	DRY(CFM)	230-265-300	230-280-335	245-315-405
		WET(CFM)	207-239-270	207-252-302	221-284-365
	External Static Pressure	in WG	0		
	Sound Pressure Level (Lo-Mid-Hi)	dB (A)	25-28-31	25-30-34	27-34-39
	External Finish Color		Munsell 1.0Y 9.2/0.2		
	Dimensions	W: in	22-7/16		
		D: in	22-7/16		
		H: in	8-3/16		
	Weight Unit	lbs	30.6		
	Field Drainpipe O.D.	in	O.D. 1-1/4		
	Refrigerant pipe Gas	in	3/8		1/2
	Refrigerant pipe Liquid	in			1/4
Outdoor unit	MCA	A	9		10
	MOCP	A	15	16	18
	Fan Motor	F.L.A.	0.50		
	Compressor	Model(Type)	DC INVERTER-driven	DC INVERTER-driven Twin Rotary	
		R.L.A.	6.2	6.6	7.4
		L.R.A.	7.7	8.2	9.3
	Air flow (Cooling/Heating)	CFM	(1,229/1,172)	(1,229/1,172)	(1,243/1,229)
	Refrigerant Control		Linear Expansion Valve		
	Defrost Method		Reverse Cycle		
	SPL (Cooling)	dB (A)	48	49	
	SPL (Heating)	dB (A)	50	51	
	External Finish Color		Munsell No.3Y 7.8/1.1		
	Dimension	W: in	31-1/2		
		D: in	11-1/4		
		H: in	21-5/8		
	Weight	lbs	81		
	Remote Controller	Type		Wired Remote Controller	
Refrigerant	Type		R410A		
	Charge	lbs, oz	2,5	2,9	
	Oil	Type(Fl.oz.)	FV50S(9.1)	FV50S(11.8)	
Refrigerant Pipe	Gas side O.D.	in	3/8		1/2
	Liquid side O.D.	in			1/4
	Height Difference (Max)	ft	40		
	Length (Max.)	ft	65		
Connection Method	Indoor/Outdoor		FI a red/Flared		
Operation Guarantee	Cooling	°F	14 - 115		
	Heating	°F	-4 - 75		

NOTES : *1.Rating conditions (cooling)-Indoor : D.B. 26.7°C (80°F), W.B. 19.4°C (67°F) Outdoor : D.B. 35°C (95°F), W.B. 23.9°C (75°F)
 (heating)-Indoor : D.B. 21.1°C (70°F), W.B. 15.6°C (60°F) Outdoor : D.B. 8.3°C (47°F), W.B. 6.1°C (43°F)
 *2.Rating conditions(heating)-Indoor : D.B. 21.1°C (70°F), W.B. 15.6°C (60°F) Outdoor : D.B. -8.3°C (17°F), W.B. -9.4°C (15°F)

Operating range

		Indoor intake air temperature		Outdoor intake air temperature	
Cooling	Maximum	D.B. 35°C (95°F), W.B. 21.7°C (71°F)		D.B. 46°C (115°F)	
	Minimum	D.B. 19.4°C (67°F), W.B. 13.9°C (57°F)		D.B. -10°C (14°F)	
Heating	Maximum	D.B. 26.7°C (80°F), W.B. 19.4°C (67°F)		D.B. 24°C (75°F), W.B. 18°C (65°F)	
	Minimum	D.B. 21.1°C (70°F), W.B. 15.6°C (60°F)		D.B. -20°C (-4°F), W.B. -21°C (-5°F)	

SUZ-KA09NA(H)2.MX SUZ-KA12NA(H)2.MX SUZ-KA15NA(H)2.MX (SEZ, SVZ Combination)

Model name	Indoor unit		SEZ-KD09NA4	SEZ-KD12NA4	SEZ-KD15NA4	SVZ-KP12NA
	Outdoor unit		SUZ-KA09NA(H)2	SUZ-KA12NA(H)2	SUZ-KA15NA(H)2	SUZ-KA12NA(H)2
Cooling	Rated Capacity	Btu/h	9,000	12,000	15,000	12,000
	Capacity Range	Btu/h	3,900-9,000	4,000-12,000	5,200-15,000	4,300-12,000
	Total input	W	700	930	1,150	940
	Energy Efficiency	EER	12.8	12.9	13.0	12.7
		SEER	18.8	20.5	19.0	18.0
	Moisture Removal	Pints/h	1.5	1.9	1.9	1.2
	Sensible Heat Factor		0.82	0.82	0.86	0.89
Heating at 47°F	Rated Capacity	Btu/h	12,000	15,000	18,000	15,000
	Capacity Range	Btu/h	4,200-12,800	4,800-16,800	5,000-21,600	4,700-16,700
	Total input	W	1,100	1,330	1,440	1,210
	HSPF(Region IV)	Btu/h/W	11.0(10.4)	12.4(11.8)	11.4(11.0)	12.1(11.5)
Heating at 17°F	Rated Capacity	Btu/h	7,600	10,000	11,700	9,900
	Rated Total input	W	880(1,010)	1,180(1,310)	1,280(1,410)	1,120(1,250)
	Maximum Capacity	Btu/h	7,600	10,000	11,700	9,900
	Maximum Total Input	W	880(1,010)	1,180(1,310)	1,280(1,410)	1,120(1,250)
Power supply	Voltage, Phase, Cycle		208/230V, 1-phase, 60Hz			
Voltage	Indoor - Outdoor S1-S2		AC 208/230V			
	Indoor - Outdoor S2-S3		DC12-24V			
	Indoor - Remote controller		DC12V			
Indoor unit	MCA	A	1.0			3.0
	Fan Motor	F.L.A	0.51	0.57	0.74	2.4
	Fan Motor Output	W	96			121
	Air flow (Lo-Mid-Hi)	DRY(CFM)	194-247-317	247-317-388	353-441-529	278-381-448
		WET(CFM)	174-222-285	222-285-349	317-396-476	—
	External Static Pressure	in WG	0.02-0.06-0.14-0.20			0.3 - 0.5 - 0.8
	Sound Pressure Level (Lo-Mid-Hi)	dB (A)	23-26-30	23-28-33	30-34-37	29-36-39
	External Finish Color		Galvanized-steel Sheets			BLACK
	Dimensions	W: in	31-1/8	39		17
		D: in	27-9/16			21-5/8
		H: in	7-7/8			39-13/16
	Weight Unit	lbs	42	50	54	93
	Field Drainpipe O.D.	in	O.D. 1-1/4			O.D. 3/4
	Refrigerant pipe Gas	in	3/8		1/2	3/8
	Refrigerant pipe Liquid	in	1/4			
Outdoor unit	MCA	A	9		10	9
	MOCP	A	15	16	18	16
	Fan Motor	F.L.A.	0.50			
	Compressor	Model(Type)	DC INVERTER-driven	DC INVERTER-driven Twin Rotary		
		R.L.A.	6.2	6.6	7.4	6.6
		L.R.A.	7.7	8.2	9.3	8.2
	Air flow (Cooling/Heating)	CFM	(1,229/1,172)	(1,229/1,172)	(1,243/1,229)	(1,229/1,172)
	Refrigerant Control		Linear Expansion Valve			
	Defrost Method		Reverse Cycle			
	SPL (Cooling)	dB (A)	48	49		
	SPL (Heating)	dB (A)	50	51		
	External Finish Color		Munsell No.3Y 7.8/1.1			
	Dimension	W: in	31-1/2			
		D: in	11-1/4			
		H: in	21-5/8			
	Weight	lbs	81			
	Remote Controller	Type		Wired Remote Controller		
Refrigerant	Type		R410A			
	Charge	lbs, oz	2,5		2,9	
	Oil	Type(Fl.oz)	FV50S(9.1)		FV50S(11.8)	
Refrigerant Pipe	Gas side O.D.	in	3/8		1/2	3/8
	Liquid side O.D.	in	1/4			
	Height Difference (Max)	ft	40			
	Length (Max.)	ft	65			
Connection Method	Indoor/Outdoor		Flared/Flared			
Operation Guarantee	Cooling	°F	14 - 115			
	Heating	°F	-4 - 75			

NOTES : *1.Rating conditions (cooling)-Indoor : D.B. 26.7°C(80°F), W.B. 19.4°C(67°F) Outdoor : D.B. 35°C(95°F), W.B. 23.9°C(75°F)
(heating)-Indoor : D.B. 21.1°C(70°F), W.B. 15.6°C(60°F) Outdoor : D.B. 8.3°C(47°F), W.B. 6.1°C(43°F)
*2.Rating conditions(heating)-Indoor : D.B. 21.1°C(70°F), W.B. 15.6°C(60°F) Outdoor : D.B. -8.3°C(17°F), W.B. -9.4°C(15°F)

Operating range

		Indoor intake air temperature		Outdoor intake air temperature	
Cooling	Maximum	D.B. 35°C(95°F), W.B. 21.7°C(71°F)		D.B. 46°C(115°F)	
	Minimum	D.B. 19.4°C(67°F), W.B. 13.9°C(57°F)		D.B. -10°C(14°F)	
Heating	Maximum	D.B. 26.7°C(80°F), W.B. 19.4°C(67°F)		D.B. 24°C(75°F), W.B. 18°C(65°F)	
	Minimum	D.B. 21.1°C(70°F), W.B. 15.6°C(60°F)		D.B. -20°C(-4°F), W.B. -21°C(-5°F)	

SUZ-KA09NA(H)2.MX SUZ-KA12NA(H)2.MX SUZ-KA15NA(H)2.MX (PEAD Combination)

Model name	Indoor unit		PEAD-A09AA7	PEAD-A12AA7	PEAD-A15AA7
	Outdoor unit		SUZ-KA09NA(H)2	SUZ-KA12NA(H)2	SUZ-KA15NA(H)2
Cooling	Rated Capacity	Btu/h	9,000	12,000	15,000
	Capacity Range	Btu/h	4,300-9,000	4,400-12,000	5,500-15,000
	Total input	W	720	930	1,150
	Energy Efficiency	EER	12.5	12.9	13.0
		SEER	19.7	20.5	19.2
	Moisture Removal	Pints/h	0.8	1.1	1.3
	Sensible Heat Factor		0.90	0.9	0.9
Heating at 47°F	Rated Capacity	Btu/h	12,000	15,000	18,000
	Capacity Range	Btu/h	3,960-13,000	4,800-17,000	4,900-21,500
	Total input	W	900	1,160	1,350
	HSPF(Region IV)	Btu/h/W	12.6(11.9)	13.0(12.4)	11.6(11.2)
Heating at 17°F	Rated Capacity	Btu/h	7,600	9,900	11,300
	Rated Total input	W	880(1,010)	1,070(1,200)	1,220(1,350)
	Maximum Capacity	Btu/h	7,600	9,900	11,300
	Maximum Total Input	W	880(1,010)	1,070(1,200)	1,220(1,350)
Power supply	Voltage, Phase, Cycle		208/230V, 1-phase, 60Hz		
Voltage	Indoor - Outdoor S1-S2		AC 208/230V		
	Indoor - Outdoor S2-S3		DC12-24V		
	Indoor - Remote controller		DC12V		
Indoor unit	MCA	A	1.45		1.69
	Fan Motor	F.L.A	1.16		1.35
	Fan Motor Output	W	85		
	Air flow (Lo-Mid-Hi)	DRY(CFM)	282-318-353	353-424-494	424-512-600
		WET(CFM)	254-286-318	318-382-445	382-461-540
	External Static Pressure	in WG	0.14-0.20-0.28-0.40-0.60		
	Sound Pressure Level (Lo-Mid-Hi)	dB (A)	24-26-28	28-30-34	30-33-37
	External Finish Color		Galvanized Sheets		
	Dimensions	W: in	35-7/16		
		D: in	28-7/8		
		H: in	9-7/8		
	Weight Unit	lbs	58		62
	Field Drainpipe O.D.	in	O.D. 1-1/4		
	Refrigerant pipe Gas	in	3/8	1/2	
	Refrigerant pipe Liquid	in	1/4		
Outdoor unit	MCA	A	9		10
	MOCP	A	15	16	18
	Fan Motor	F.L.A.	0.50		
	Compressor	Model(Type)	DC INVERTER-driven	DC INVERTER-driven Twin Rotary	
		R.L.A.	6.2	6.6	7.4
		L.R.A.	7.7	8.2	9.3
	Air flow (Cooling/Heating)	CFM	(1,229/1,172)	(1,229/1,172)	(1,243/1,229)
	Refrigerant Control		Linear Expansion Valve		
	Defrost Method		Reverse Cycle		
	SPL (Cooling)	dB (A)	48	49	
	SPL (Heating)	dB (A)	50	51	
	External Finish Color		Munsell No.3Y 7.8/1.1		
	Dimension	W: in	31-1/2		
		D: in	11-1/4		
		H: in	21-5/8		
	Weight	lbs	81		
	Remote Controller	Type		Wired Remote Controller	
Refrigerant	Type		R410A		
	Charge	lbs, oz	2,5	2,9	
	Oil	Type(Fl.oz.)	FV50S(9.1)	FV50S(11.8)	
Refrigerant Pipe	Gas side O.D.	in	3/8		1/2
	Liquid side O.D.	in		1/4	
	Height Difference (Max)	ft	40		
	Length (Max.)	ft	65		
Connection Method	Indoor/Outdoor		Flared/Flared		
Operation Guarantee	Cooling	°F	14 - 115		
	Heating	°F	-4 - 75		

NOTES : *1.Rating conditions (cooling)-Indoor : D.B. 26.7°C(80°F), W.B. 19.4°C(67°F) Outdoor : D.B. 35°C(95°F), W.B. 23.9°C(75°F)
 (heating)-Indoor : D.B. 21.1°C(70°F), W.B. 15.6°C(60°F) Outdoor : D.B. 8.3°C(47°F), W.B. 6.1°C(43°F)
 *2.Rating conditions(heating)-Indoor : D.B. 21.1°C(70°F), W.B. 15.6°C(60°F) Outdoor : D.B. -8.3°C(17°F), W.B. -9.4°C(15°F)

Operating range

		Indoor intake air temperature		Outdoor intake air temperature	
Cooling	Maximum	D.B. 35°C(95°F), W.B. 21.7°C(71°F)		D.B. 46°C(115°F)	
	Minimum	D.B. 19.4°C(67°F), W.B. 13.9°C(57°F)		D.B. -10°C(14°F)	
Heating	Maximum	D.B. 26.7°C(80°F), W.B. 19.4°C(67°F)		D.B. 24°C(75°F), W.B. 18°C(65°F)	
	Minimum	D.B. 21.1°C(70°F), W.B. 15.6°C(60°F)		D.B. -20°C(-4°F), W.B. -21°C(-5°F)	

SUZ-KA09NA(H)2.MX SUZ-KA12NA(H)2.MX (MLZ Combination)

Model name	Indoor unit		MLZ-KP09NA	MLZ-KP12NA
	Outdoor unit		SUZ-KA09NA(H)2	SUZ-KA12NA(H)2
Cooling	Rated Capacity	Btu/h	9,000	12,000
	Capacity Range	Btu/h	3,600-9,000	3,900-12,000
	Total input	W	710	960
	Energy Efficiency	EER	12.6	12.5
		SEER	19.5	19.8
	Moisture Removal	Pints/h	1.5	2.8
	Sensible Heat Factor		0.82	0.74
Heating at 47°F	Rated Capacity	Btu/h	12,000	15,400
	Capacity Range	Btu/h	4,010-13,000	4,600-17,000
	Total input	W	860	1,300
	HSPF(Region IV)	Btu/h/W	13.3(12.5)	12.1(11.6)
Heating at 17°F	Rated Capacity	Btu/h	7,700	9,900
	Rated Total input	W	700(830)	1,020(1,150)
	Maximum Capacity	Btu/h	7,700	9,900
	Maximum Total Input	W	700(830)	1,020(1,150)
Power supply	Voltage, Phase, Cycle		208/230V, 1-phase, 60Hz	
Voltage	Indoor - Outdoor S1-S2		AC 208/230V	
	Indoor - Outdoor S2-S3		DC12-24V	
	Indoor - Remote controller		DC12V	
Indoor unit	MCA	A	1.0	
	Fan Motor	F.L.A	0.68	
	Fan Motor Output	W	30	
	Air flow (SLo-Lo-Mid-Hi)	Cooling DRY(CFM)	212-254-283-311	212-258-297-332
		Heating WET(CFM)	180-216-240-264	180-219-252-282
		Heating (CFM)	212-247-290-325	212-272-311-350
	External Static Pressure	in WG	0	
	Sound Pressure Level (Lo-Mid-Hi)	Cooling dB (A)	27-31-34-38	27-32-36-40
		Heating dB (A)	26-29-34-37	26-32-36-40
	External Finish Color		Munsell 4.0GY 9.1/0.2	
	Dimensions	W: in	43-3/8	
		D: in	14-3/16	
		H: in	7-5/16	
	Weight Unit	lbs	34	
	Field Drainpipe O.D.	in	O.D. 1-1/4	
	Refrigerant pipe Gas	in	3/8	
	Refrigerant pipe Liquid	in	1/4	
Outdoor unit	MCA	A	9	
	MOCP	A	15	16
	Fan Motor	F.L.A.	0.50	
	Compressor	Model(Type)	DC INVERTER-driven	DC INVERTER-driven Twin Rotary
		R.L.A.	6.2	6.6
		L.R.A.	7.7	8.2
	Air flow (Cooling/Heating)	CFM	(1,229/1,172)	(1,229/1,172)
	Refrigerant Control		Linear Expansion Valve	
	Defrost Method		Reverse Cycle	
	SPL (Cooling)	dB (A)	48	49
	SPL (Heating)	dB (A)	50	51
	External Finish Color		Munsell No.3Y 7.8/1.1	
	Dimension	W: in	31-1/2	
		D: in	11-1/4	
		H: in	21-5/8	
	Weight	lbs	81	
Remote Controller	Type		Wireless Remote Controller	
Refrigerant	Type		R410A	
	Charge	lbs, oz	2,5	2,9
	Oil	Type(Fl.oz.)	FV50S(9.1)	FV50S(11.8)
Refrigerant Pipe	Gas side O.D.	in	3/8	
	Liquid side O.D.	in	1/4	
	Height Difference (Max)	ft	40	
	Length (Max.)	ft	65	
Connection Method	Indoor/Outdoor		Flared/Flared	
Operation Guarantee	Cooling	°F	14 - 115	
	Heating	°F	-4 - 75	

NOTES : *1.Rating conditions (cooling)-Indoor : D.B. 26.7°C(80°F), W.B. 19.4°C(67°F) Outdoor : D.B. 35°C(95°F), W.B. 23.9°C(75°F)
 (heating)-Indoor : D.B. 21.1°C(70°F), W.B. 15.6°C(60°F) Outdoor : D.B. 8.3°C(47°F), W.B. 6.1°C(43°F)
 *2.Rating conditions(heating)-Indoor : D.B. 21.1°C(70°F), W.B. 15.6°C(60°F) Outdoor : D.B. -8.3°C(17°F), W.B. -9.4°C(15°F)

Operating range

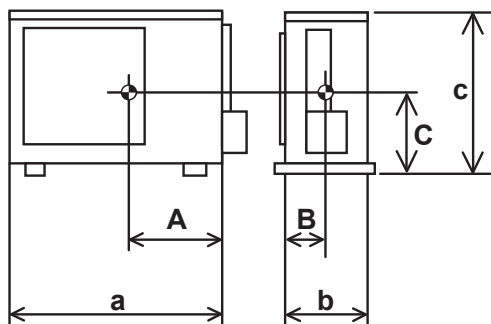
		Indoor intake air temperature		Outdoor intake air temperature	
Cooling	Maximum	D.B. 35°C(95°F), W.B. 21.7°C(71°F)		D.B. 46°C(115°F)	
	Minimum	D.B. 19.4°C(67°F), W.B. 13.9°C(57°F)		D.B. -10°C(14°F)	
Heating	Maximum	D.B. 26.7°C(80°F), W.B. 19.4°C(67°F)		D.B. 24°C(75°F), W.B. 18°C(65°F)	
	Minimum	D.B. 21.1°C(70°F), W.B. 15.6°C(60°F)		D.B. -20°C(-4°F), W.B. -21°C(-5°F)	

2

POSITION OF THE CENTER OF GRAVITY

2-1. OUTDOOR UNIT

Unit: inch(mm)



Model	A	B	C	a	b	c
SUZ-KA09/12/15NA2 SUZ-KA09/12/15NAH2	11-1/16 (280)	5-9/16 (140)	9-1/2 (240)	31-1/2 (800)	11-1/4 (285)	21-5/8 (550)

3

CORRECTION FACTORS

3-1. INVERTER TYPE

3-1.1 Cooling capacity corrections

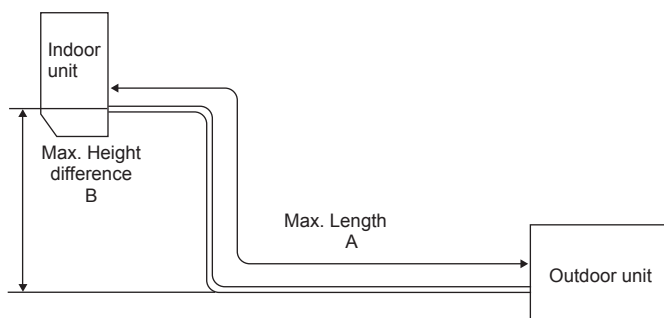
Model	Refrigerant piping length (one way: ft)			
	25 (std.)	40	65	100
SUZ-KA09/12/15NA2 SUZ-KA09/12/15NAH2	1.0	0.988	0.967	-

3-1.2 Heating capacity corrections

Model	Refrigerant piping length (one way: ft)			
	25 (std.)	40	65	100
SUZ-KA09/12/15NA2 SUZ-KA09/12/15NAH2	1.0	0.997	0.993	-

3-1.3 Max. refrigerant piping length & max. Height difference

Model	Refrigerant piping: ft		Piping size O.D: in	
	Max. Length A	Max. Height difference B	Gas	Liquid
SUZ-KA09/12NA2 SUZ-KA09/12NAH2	65	40	3/8	1/4
SUZ-KA15NA2 SUZ-KA15NAH2	65	40	1/2	1/4



3-1.4 Additional refrigerant charge (R410A: oz)

NOTE: Refrigerant piping exceeding 25 ft requires additional refrigerant charge according to the calculation.

Model	Outdoor unit precharged	Refrigerant piping length (one way): ft					
		25	30	40	50	60	65
SUZ-KA09NA2 SUZ-KA09NAH2	2 lb 5 oz	0	1.08	3.24	5.40	7.56	8.64
SUZ-KA12NA2 SUZ-KA12NAH2	2 lb 9 oz						
SUZ-KA15NA2 SUZ-KA15NAH2							

Calculation: $X \text{ oz} = 1.08/5 \text{ oz/ft} \times (\text{Refrigerant piping length (ft)} - 25)$

4

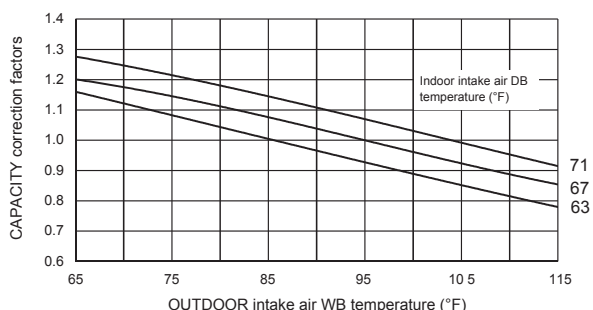
DATA

4-1. PERFORMANCE CURVE

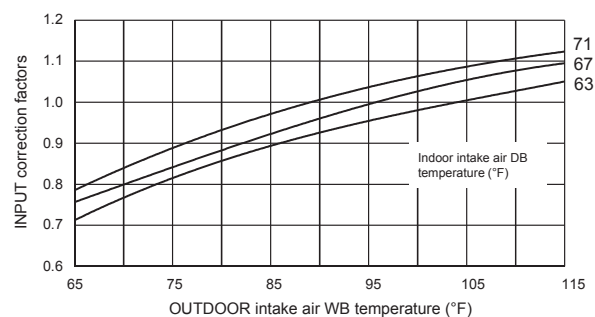
COOLING

SUZ-KA09/12/15NA(H)2.MX

Cooling capacity



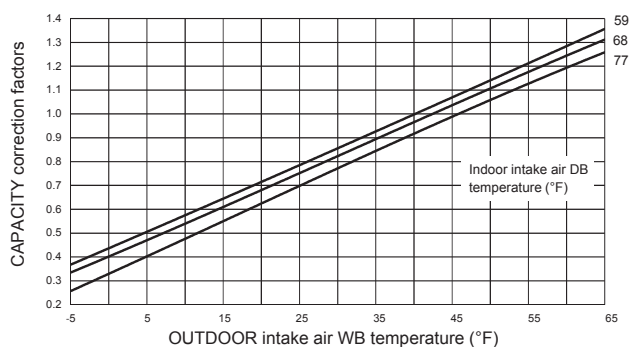
Total input (Cooling)



HEATING

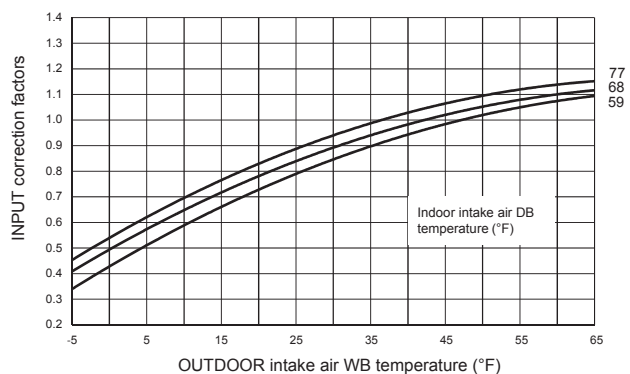
SUZ-KA09/12/15/NA(H)2.MX

Heating capacity



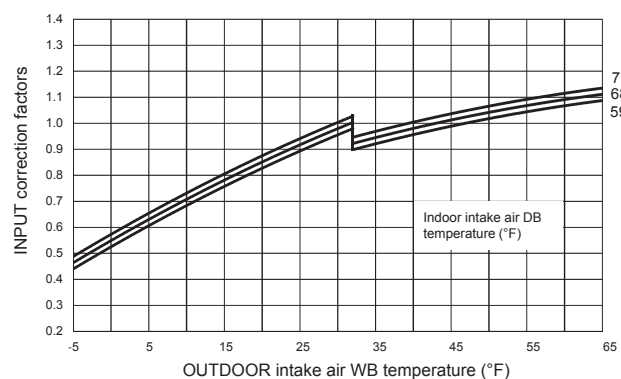
SUZ-KA09/12/15/NA2.MX

Total input (Heating)



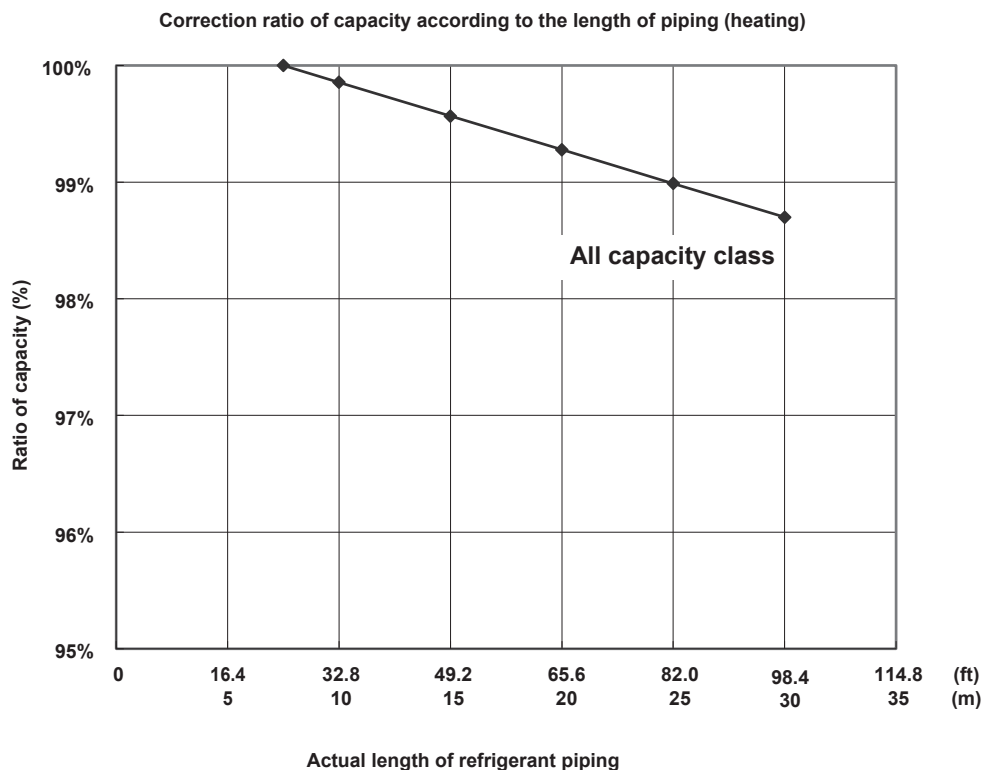
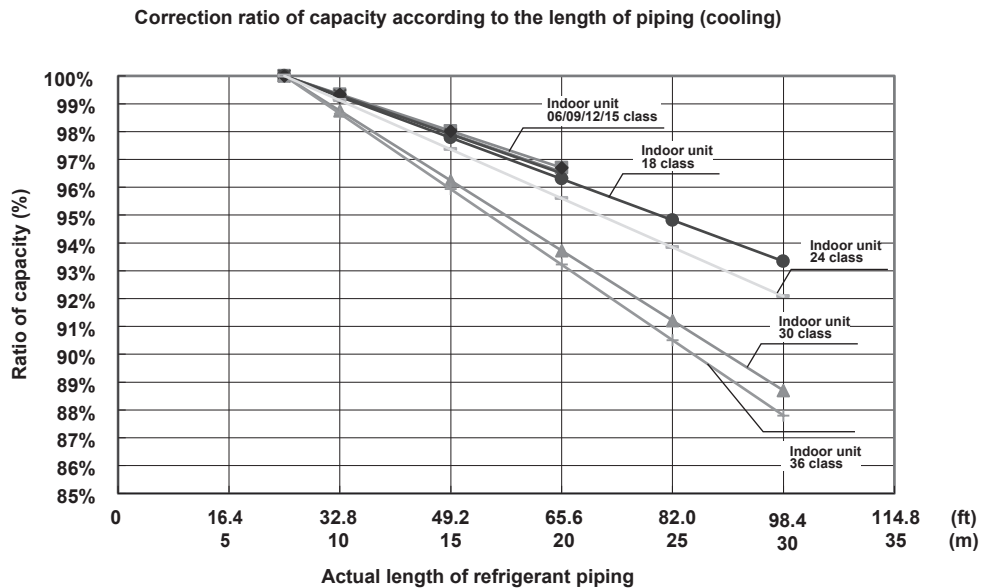
SUZ-KA09/12/15/NAH2.MX

Total input (Heating)



5 CAPACITY CORRECTION RATIO CURVE FOR PIPING LENGTH

5-1. CAPACITY CORRECTION RATIO CURVE FOR PIPING LENGTH



The length intended for the capacity calculation, which counts the length of refrigerant piping and the number of bends, is called actual length.

Length of refrigerant piping (ft) + (Number of bends × 0.984 ft) = Actual length of refrigerant piping (ft)
 [Length of refrigerant piping (m) + (Number of bends × 0.3 m) = Actual length of refrigerant piping (m)]

SEZ-KD09NA4R1.TH

SUZ-KA09NA2.MX

1) COOLING

Rated

Q(Btu/h): 9,000

W: 700

Indoor W.B. Outdoor D.B. (°F) (°C)		71°F / 21.7°C							67°F / 19.4°C							63°F / 17.2°C						
		Max	Rated	75%	50%	25%	Min		Max	Rated	75%	50%	25%	Min		Max	Rated	75%	50%	25%	Min	
115	46.1	Q(Btu/h)	8,216	8,216	6,162	4,108	-	3,560	7,693	7,693	5,770	3,846	-	3,334		7,021	7,021	5,266	3,510	-	3,042	
		W	786	786	590	393	-	258	767	767	575	384	-	252		735	735	551	368	-	242	
110	43.3	Q(Btu/h)	8,589	8,589	6,442	4,295	-	3,722	7,992	7,992	5,994	3,996	-	3,463		7,320	7,320	5,490	3,660	-	3,172	
		W	774	774	580	387	-	254	754	754	566	377	-	248		719	719	539	360	-	236	
105	40.6	Q(Btu/h)	8,963	8,963	6,722	4,481	-	3,884	8,290	8,290	6,218	4,145	-	3,593		7,693	7,693	5,770	3,846	-	3,334	
		W	764	764	573	382	-	251	735	735	551	368	-	242		703	703	527	352	-	231	
100	37.8	Q(Btu/h)	9,261	9,261	6,946	4,631	-	4,013	8,664	8,664	6,498	4,332	-	3,754		7,992	7,992	5,994	3,996	-	3,463	
		W	742	742	556	371	-	244	719	719	539	360	-	236		687	687	515	344	-	226	
95	35.0	Q(Btu/h)	9,635	9,635	7,226	4,817	-	4,175	9,000	9,000	6,750	4,500	-	3,900		8,365	8,365	6,274	4,183	-	3,625	
		W	729	729	547	364	-	239	700	700	525	350	-	230		671	671	503	336	-	221	
90	32.2	Q(Btu/h)	9,934	9,934	7,450	4,967	-	4,305	9,336	9,336	7,002	4,668	-	4,046		8,664	8,664	6,498	4,332	-	3,754	
		W	703	703	527	352	-	231	671	671	503	336	-	221		646	646	484	323	-	212	
85	29.4	Q(Btu/h)	10,307	10,307	7,730	5,154	-	4,466	9,710	9,710	7,282	4,855	-	4,207		9,037	9,037	6,778	4,519	-	3,916	
		W	678	678	508	339	-	223	646	646	484	323	-	212		623	623	467	312	-	205	
80	26.7	Q(Btu/h)	10,606	10,606	7,954	5,303	-	4,596	10,008	10,008	7,506	5,004	-	4,337		9,411	9,411	7,058	4,705	-	4,078	
		W	652	652	489	326	-	214	617	617	463	308	-	203		598	598	448	299	-	196	
75	23.9	Q(Btu/h)	10,979	10,979	8,234	5,490	-	4,758	10,307	10,307	7,730	5,154	-	4,466		9,747	9,747	7,310	4,873	-	4,224	
		W	623	623	467	312	-	205	588	588	441	294	-	193		575	575	431	287	-	189	
70	21.1	Q(Btu/h)	11,241	11,241	8,430	5,620	-	4,871	10,531	10,531	7,898	5,266	-	4,563		10,083	10,083	7,562	5,041	-	4,369	
		W	591	591	443	296	-	194	563	563	422	281	-	185		540	540	405	270	-	177	
67	19.4	Q(Btu/h)	11,353	11,353	8,515	5,676	-	4,920	10,755	10,755	8,066	5,378	-	4,661		10,307	10,307	7,730	5,154	-	4,466	
		W	563	563	422	281	-	185	540	540	405	270	-	177		511	511	384	256	-	168	

* It may not reach the above capacities in low ambient temperatures.

SEZ-KD09NA4R1.TH

SUZ-KA09NA2.MX

2) HEATING

Rated
Q(Btu/h): 12,000
W: 1,100

Indoor D.B. Outdoor W.B. (°F) (°C)			77°F / 25.0°C						68°F / 20.0°C						59°F / 15.0°C					
			Max	Rated	75%	50%	25%	Min	Max	Rated	75%	50%	25%	Min	Max	Rated	75%	50%	25%	Min
65	18.3	Q(Btu/h)	16,109	15,102	11,327	7,551	-	5,286	16,790	15,741	11,806	7,871	-	5,509	17,362	15,840	11,880	7,920	-	5,544
		W	1,428	1,267	950	633	-	299	1,384	1,228	921	614	-	290	1,345	1,150	862	575	-	272
60	15.6	Q(Btu/h)	15,279	14,324	10,743	7,162	-	5,013	15,929	14,934	11,200	7,467	-	5,227	16,441	15,300	11,475	7,650	-	5,355
		W	1,412	1,252	939	626	-	296	1,364	1,210	908	605	-	286	1,329	1,139	854	569	-	269
55	12.8	Q(Btu/h)	14,424	13,522	10,142	6,761	-	4,733	15,053	14,112	10,584	7,056	-	4,939	15,521	14,760	11,070	7,380	-	5,166
		W	1,388	1,231	923	616	-	291	1,338	1,187	890	593	-	280	1,302	1,128	846	564	-	267
50	10.0	Q(Btu/h)	13,547	12,701	9,525	6,350	-	4,445	14,164	13,279	9,959	6,639	-	4,648	14,603	14,160	10,620	7,080	-	4,956
		W	1,358	1,204	903	602	-	285	1,305	1,157	868	579	-	274	1,267	1,117	837	558	-	264
45	7.2	Q(Btu/h)	12,652	11,861	8,896	5,930	-	4,151	13,265	12,436	9,327	6,218	-	4,353	13,687	13,560	10,170	6,780	-	4,746
		W	1,320	1,171	878	585	-	277	1,265	1,122	842	561	-	265	1,223	1,100	825	550	-	260
40	4.4	Q(Btu/h)	11,740	11,006	8,255	5,503	-	3,852	12,359	11,587	8,690	5,793	-	4,055	12,773	13,200	9,900	6,600	-	4,620
		W	1,276	1,132	849	566	-	267	1,219	1,081	811	541	-	256	1,171	1,089	817	545	-	257
35	1.7	Q(Btu/h)	10,815	10,139	7,604	5,070	-	3,549	11,448	10,732	8,049	5,366	-	3,756	11,863	12,480	9,360	6,240	-	4,368
		W	1,224	1,086	814	543	-	257	1,166	1,034	776	517	-	244	1,112	1,067	800	534	-	252
30	-1.1	Q(Btu/h)	9,880	9,263	6,947	4,631	-	3,242	10,534	9,876	7,407	4,938	-	3,457	10,955	11,460	8,595	5,730	-	4,011
		W	1,166	1,034	776	517	-	244	1,107	982	736	491	-	232	1,046	1,018	763	509	-	241
25	-3.9	Q(Btu/h)	8,938	8,379	6,284	4,190	-	2,933	9,621	9,019	6,765	4,510	-	3,157	10,051	10,980	8,235	5,490	-	3,843
		W	1,100	976	732	488	-	231	1,041	923	692	462	-	218	976	990	743	495	-	234
20	-6.7	Q(Btu/h)	7,991	7,492	5,619	3,746	-	2,622	8,710	8,166	6,124	4,083	-	2,858	9,150	10,200	7,650	5,100	-	3,570
		W	1,028	912	684	456	-	216	968	859	644	429	-	203	900	930	697	465	-	220
15	-9.4	Q(Btu/h)	7,043	6,603	4,952	3,301	-	2,311	7,804	7,317	5,487	3,658	-	2,561	8,253	9,360	7,020	4,680	-	3,276
		W	949	842	631	421	-	199	889	789	592	394	-	186	821	869	652	435	-	205
10	-12.2	Q(Btu/h)	6,096	5,715	4,286	2,857	-	2,000	6,907	6,475	4,856	3,237	-	2,266	7,360	8,520	6,390	4,260	-	2,982
		W	863	765	574	383	-	181	804	713	535	356	-	168	738	792	594	396	-	187
5	-15.0	Q(Btu/h)	5,153	4,831	3,623	2,416	-	1,691	6,019	5,643	4,232	2,821	-	1,975	6,471	7,500	5,625	3,750	-	2,625
		W	770	683	512	341	-	161	711	631	473	315	-	149	653	704	528	352	-	166
0	-17.8	Q(Btu/h)	4,218	3,954	2,966	1,977	-	1,384	5,145	4,823	3,617	2,412	-	1,688	5,588	6,000	4,500	3,000	-	2,100
		W	669	594	445	297	-	140	613	543	408	272	-	128	565	583	437	292	-	138
-4	-20.0	Q(Btu/h)	3,476	3,259	2,444	1,630	-	1,141	4,456	4,177	3,133	2,089	-	1,462	4,884	6,000	4,500	3,000	-	2,100
		W	584	518	389	259	-	123	529	469	352	235	-	111	495	583	437	292	-	138

* Above data is for heating operation without any frost.

SEZ-KD12NA4R1.TH**SUZ-KA12NA2.MX****1) COOLING****Rated**

Q(Btu/h): 12,000

W: 930

Indoor W.B. Outdoor D.B. (°F) (°C)		71°F / 21.7°C							67°F / 19.4°C							63°F / 17.2°C						
		Max	Rated	75%	50%	25%	Min		Max	Rated	75%	50%	25%	Min		Max	Rated	75%	50%	25%	Min	
115	46.1	Q(Btu/h)	10,954	10,954	8,216	5,477	-	3,651	10,257	10,257	7,693	5,129	-	3,419		9,361	9,361	7,021	4,680	-	3,120	
		W	1,045	1,045	783	522	-	270	1,019	1,019	764	510	-	263		977	977	733	488	-	252	
110	43.3	Q(Btu/h)	11,452	11,452	8,589	5,726	-	3,817	10,656	10,656	7,992	5,328	-	3,552		9,759	9,759	7,320	4,880	-	3,253	
		W	1,028	1,028	771	514	-	265	1,002	1,002	752	501	-	259		955	955	717	478	-	247	
105	40.6	Q(Btu/h)	11,950	11,950	8,963	5,975	-	3,983	11,054	11,054	8,290	5,527	-	3,685		10,257	10,257	7,693	5,129	-	3,419	
		W	1,015	1,015	761	507	-	262	977	977	733	488	-	252		934	934	701	467	-	241	
100	37.8	Q(Btu/h)	12,349	12,349	9,261	6,174	-	4,116	11,552	11,552	8,664	5,776	-	3,851		10,656	10,656	7,992	5,328	-	3,552	
		W	985	985	739	493	-	254	955	955	717	478	-	247		913	913	685	457	-	236	
95	35.0	Q(Btu/h)	12,846	12,846	9,635	6,423	-	4,282	12,000	12,000	9,000	6,000	-	4,000		11,154	11,154	8,365	5,577	-	3,718	
		W	968	968	726	484	-	250	930	930	698	465	-	240		892	892	669	446	-	230	
90	32.2	Q(Btu/h)	13,245	13,245	9,934	6,622	-	4,415	12,448	12,448	9,336	6,224	-	4,149		11,552	11,552	8,664	5,776	-	3,851	
		W	934	934	701	467	-	241	892	892	669	446	-	230		858	858	643	429	-	221	
85	29.4	Q(Btu/h)	13,743	13,743	10,307	6,871	-	4,581	12,946	12,946	9,710	6,473	-	4,315		12,050	12,050	9,037	6,025	-	4,017	
		W	900	900	675	450	-	232	858	858	643	429	-	221		828	828	621	414	-	214	
80	26.7	Q(Btu/h)	14,141	14,141	10,606	7,071	-	4,714	13,344	13,344	10,008	6,672	-	4,448		12,548	12,548	9,411	6,274	-	4,183	
		W	866	866	650	433	-	224	820	820	615	410	-	212		794	794	596	397	-	205	
75	23.9	Q(Btu/h)	14,639	14,639	10,979	7,320	-	4,880	13,743	13,743	10,307	6,871	-	4,581		12,996	12,996	9,747	6,498	-	4,332	
		W	828	828	621	414	-	214	781	781	586	391	-	202		764	764	573	382	-	197	
70	21.1	Q(Btu/h)	14,988	14,988	11,241	7,494	-	4,996	14,041	14,041	10,531	7,021	-	4,680		13,444	13,444	10,083	6,722	-	4,481	
		W	786	786	589	393	-	203	747	747	561	374	-	193		718	718	538	359	-	185	
67	19.4	Q(Btu/h)	15,137	15,137	11,353	7,568	-	5,046	14,340	14,340	10,755	7,170	-	4,780		13,743	13,743	10,307	6,871	-	4,581	
		W	747	747	561	374	-	193	718	718	538	359	-	185		679	679	510	340	-	175	

* It may not reach the above capacities in low ambient temperatures.

SEZ-KD12NA4R1.TH

SUZ-KA12NA2.MX

2) HEATING

Rated

Q(Btu/h): 15,000

W: 1,330

Indoor D.B. Outdoor W.B. (°F) (°C)			77°F / 25.0°C						68°F / 20.0°C						59°F / 15.0°C					
			Max	Rated	75%	50%	25%	Min	Max	Rated	75%	50%	25%	Min	Max	Rated	75%	50%	25%	Min
65	18.3	Q(Btu/h)	21,143	18,878	14,158	9,439	-	6,041	22,038	19,676	14,757	9,838	-	6,296	22,788	19,800	14,850	9,900	-	6,336
		W	1,946	1,532	1,149	766	-	299	1,886	1,485	1,113	742	-	290	1,834	1,390	1,042	695	-	272
60	15.6	Q(Btu/h)	20,053	17,905	13,429	8,952	-	5,730	20,907	18,667	14,000	9,334	-	5,973	21,578	19,125	14,344	9,563	-	6,120
		W	1,924	1,514	1,136	757	-	296	1,859	1,463	1,097	732	-	286	1,811	1,377	1,032	688	-	269
55	12.8	Q(Btu/h)	18,931	16,903	12,677	8,452	-	5,409	19,757	17,640	13,230	8,820	-	5,645	20,371	18,450	13,838	9,225	-	5,904
		W	1,892	1,489	1,117	744	-	291	1,823	1,435	1,076	717	-	280	1,775	1,363	1,022	682	-	267
50	10.0	Q(Btu/h)	17,781	15,876	11,907	7,938	-	5,080	18,591	16,599	12,449	8,299	-	5,312	19,166	17,700	13,275	8,850	-	5,664
		W	1,850	1,456	1,092	728	-	285	1,778	1,399	1,050	700	-	274	1,726	1,350	1,012	675	-	264
45	7.2	Q(Btu/h)	16,605	14,826	11,120	7,413	-	4,744	17,411	15,545	11,659	7,773	-	4,975	17,964	16,950	12,713	8,475	-	5,424
		W	1,799	1,416	1,062	708	-	277	1,724	1,357	1,018	678	-	265	1,666	1,330	998	665	-	260
40	4.4	Q(Btu/h)	15,409	13,758	10,318	6,879	-	4,403	16,221	14,483	10,862	7,242	-	4,635	16,765	16,500	12,375	8,250	-	5,280
		W	1,738	1,368	1,026	684	-	267	1,661	1,307	980	654	-	256	1,595	1,317	988	658	-	257
35	1.7	Q(Btu/h)	14,195	12,674	9,506	6,337	-	4,056	15,025	13,415	10,062	6,708	-	4,293	15,570	15,600	11,700	7,800	-	4,992
		W	1,668	1,313	985	657	-	257	1,589	1,251	938	625	-	244	1,515	1,290	968	645	-	252
30	-1.1	Q(Btu/h)	12,968	11,578	8,684	5,789	-	3,705	13,826	12,345	9,259	6,172	-	3,950	14,378	14,325	10,744	7,163	-	4,584
		W	1,589	1,250	938	625	-	244	1,508	1,187	890	593	-	232	1,426	1,230	923	615	-	241
25	-3.9	Q(Btu/h)	11,731	10,474	7,856	5,237	-	3,352	12,627	11,274	8,456	5,637	-	3,608	13,191	13,725	10,294	6,863	-	4,392
		W	1,500	1,180	885	590	-	231	1,418	1,116	837	558	-	218	1,330	1,197	898	599	-	234
20	-6.7	Q(Btu/h)	10,488	9,365	7,023	4,682	-	2,997	11,432	10,207	7,655	5,103	-	3,266	12,009	12,750	9,563	6,375	-	4,080
		W	1,401	1,103	827	551	-	216	1,320	1,038	779	519	-	203	1,227	1,124	843	562	-	220
15	-9.4	Q(Btu/h)	9,244	8,253	6,190	4,127	-	2,641	10,243	9,146	6,859	4,573	-	2,927	10,832	11,700	8,775	5,850	-	3,744
		W	1,293	1,018	763	509	-	199	1,212	954	715	477	-	186	1,119	1,051	788	525	-	205
10	-12.2	Q(Btu/h)	8,001	7,144	5,358	3,572	-	2,286	9,065	8,094	6,070	4,047	-	2,590	9,660	10,650	7,988	5,325	-	3,408
		W	1,176	925	694	463	-	181	1,095	862	646	431	-	168	1,006	958	718	479	-	187
5	-15.0	Q(Btu/h)	6,764	6,039	4,529	3,019	-	1,932	7,900	7,054	5,290	3,527	-	2,257	8,494	9,375	7,031	4,688	-	3,000
		W	1,049	825	619	413	-	161	969	763	572	381	-	149	889	851	638	426	-	166
0	-17.8	Q(Btu/h)	5,536	4,943	3,707	2,471	-	1,582	6,752	6,029	4,522	3,014	-	1,929	7,334	7,500	5,625	3,750	-	2,400
		W	912	718	538	359	-	140	835	657	493	328	-	128	771	705	529	352	-	138
-4	-20.0	Q(Btu/h)	4,563	4,074	3,055	2,037	-	1,304	5,848	5,222	3,916	2,611	-	1,671	6,411	7,500	5,625	3,750	-	2,400
		W	796	627	470	313	-	123	721	567	425	284	-	111	674	705	529	352	-	138

* Above data is for heating operation without any frost.

SEZ-KD15NA4R1.TH**SUZ-KA15NA2.MX****1) COOLING****Rated**

Q(Btu/h): 15,000

W: 1,150

Indoor W.B. Outdoor D.B. (°F) (°C)			71°F / 21.7°C						67°F / 19.4°C						63°F / 17.2°C					
			Max	Rated	75%	50%	25%	Min	Max	Rated	75%	50%	25%	Min	Max	Rated	75%	50%	25%	Min
115	46.1	Q(Btu/h)	13,693	13,693	10,270	6,846	-	4,747	12,822	12,822	9,616	6,411	-	4,445	11,701	11,701	8,776	5,851	-	4,056
		W	1,292	1,292	969	646	-	359	1,260	1,260	945	630	-	351	1,208	1,208	906	604	-	336
110	43.3	Q(Btu/h)	14,315	14,315	10,737	7,158	-	4,963	13,320	13,320	9,990	6,660	-	4,617	12,199	12,199	9,149	6,100	-	4,229
		W	1,271	1,271	953	635	-	354	1,239	1,239	929	620	-	345	1,182	1,182	886	591	-	329
105	40.6	Q(Btu/h)	14,938	14,938	11,203	7,469	-	5,178	13,817	13,817	10,363	6,909	-	4,790	12,822	12,822	9,616	6,411	-	4,445
		W	1,255	1,255	941	628	-	349	1,208	1,208	906	604	-	336	1,155	1,155	866	578	-	321
100	37.8	Q(Btu/h)	15,436	15,436	11,577	7,718	-	5,351	14,440	14,440	10,830	7,220	-	5,006	13,320	13,320	9,990	6,660	-	4,617
		W	1,218	1,218	914	609	-	339	1,182	1,182	886	591	-	329	1,129	1,129	847	564	-	314
95	35.0	Q(Btu/h)	16,058	16,058	12,044	8,029	-	5,567	15,000	15,000	11,250	7,500	-	5,200	13,942	13,942	10,456	6,971	-	4,833
		W	1,197	1,197	898	599	-	333	1,150	1,150	863	575	-	320	1,103	1,103	827	551	-	307
90	32.2	Q(Btu/h)	16,556	16,556	12,417	8,278	-	5,739	15,560	15,560	11,670	7,780	-	5,394	14,440	14,440	10,830	7,220	-	5,006
		W	1,155	1,155	866	578	-	321	1,103	1,103	827	551	-	307	1,061	1,061	796	530	-	295
85	29.4	Q(Btu/h)	17,178	17,178	12,884	8,589	-	5,955	16,183	16,183	12,137	8,091	-	5,610	15,062	15,062	11,297	7,531	-	5,222
		W	1,113	1,113	835	557	-	310	1,061	1,061	796	530	-	295	1,024	1,024	768	512	-	285
80	26.7	Q(Btu/h)	17,676	17,676	13,257	8,838	-	6,128	16,680	16,680	12,510	8,340	-	5,783	15,685	15,685	11,763	7,842	-	5,437
		W	1,071	1,071	803	536	-	298	1,013	1,013	760	507	-	282	982	982	736	491	-	273
75	23.9	Q(Btu/h)	18,299	18,299	13,724	9,149	-	6,344	17,178	17,178	12,884	8,589	-	5,955	16,245	16,245	12,184	8,122	-	5,632
		W	1,024	1,024	768	512	-	285	966	966	725	483	-	269	944	944	708	472	-	263
70	21.1	Q(Btu/h)	18,734	18,734	14,051	9,367	-	6,495	17,552	17,552	13,164	8,776	-	6,085	16,805	16,805	12,604	8,402	-	5,826
		W	971	971	729	486	-	270	924	924	693	462	-	257	887	887	666	444	-	247
67	19.4	Q(Btu/h)	18,921	18,921	14,191	9,461	-	6,559	17,925	17,925	13,444	8,963	-	6,214	17,178	17,178	12,884	8,589	-	5,955
		W	924	924	693	462	-	257	887	887	666	444	-	247	840	840	630	420	-	234

* It may not reach the above capacities in low ambient temperatures.

SEZ-KD15NA4R1.TH

SUZ-KA15NA2.MX

Rated

Q(Btu/h): 18,000

W: 1,440

2) HEATING

Indoor D.B.			77°F / 25.0°C							68°F / 20.0°C							59°F / 15.0°C						
Outdoor W.B.			Max	Rated	75%	50%	25%	Min		Max	Rated	75%	50%	25%	Min		Max	Rated	75%	50%	25%	Min	
(°F)	(°C)																						
65	18.3	Q(Btu/h)	27,184	22,653	16,990	11,327	-	6,293		28,334	23,612	17,709	11,806	-	6,559		29,298	23,760	17,820	11,880	-	6,600	
		W	2,303	1,659	1,244	829	-	334		2,232	1,607	1,206	804	-	324		2,170	1,505	1,129	752	-	303	
60	15.6	Q(Btu/h)	25,783	21,486	16,114	10,743	-	5,968		26,881	22,401	16,800	11,200	-	6,222		27,743	22,950	17,213	11,475	-	6,375	
		W	2,277	1,639	1,229	820	-	330		2,200	1,584	1,188	792	-	319		2,143	1,490	1,118	745	-	300	
55	12.8	Q(Btu/h)	24,340	20,284	15,213	10,142	-	5,634		25,402	21,168	15,876	10,584	-	5,880		26,191	22,140	16,605	11,070	-	6,150	
		W	2,239	1,612	1,209	806	-	325		2,158	1,553	1,165	777	-	313		2,101	1,476	1,107	738	-	297	
50	10.0	Q(Btu/h)	22,861	19,051	14,288	9,525	-	5,292		23,902	19,918	14,939	9,959	-	5,533		24,642	21,240	15,930	10,620	-	5,900	
		W	2,190	1,576	1,182	788	-	317		2,104	1,515	1,136	758	-	305		2,043	1,462	1,096	731	-	294	
45	7.2	Q(Btu/h)	21,350	17,791	13,344	8,896	-	4,942		22,385	18,654	13,991	9,327	-	5,182		23,096	20,340	15,255	10,170	-	5,650	
		W	2,129	1,533	1,150	766	-	309		2,040	1,469	1,102	735	-	296		1,972	1,440	1,080	720	-	290	
40	4.4	Q(Btu/h)	19,811	16,509	12,382	8,255	-	4,586		20,856	17,380	13,035	8,690	-	4,828		21,555	19,800	14,850	9,900	-	5,500	
		W	2,057	1,481	1,111	741	-	298		1,966	1,415	1,062	708	-	285		1,888	1,426	1,069	713	-	287	
35	1.7	Q(Btu/h)	18,251	15,209	11,407	7,604	-	4,225		19,318	16,099	12,074	8,049	-	4,472		20,018	18,720	14,040	9,360	-	5,200	
		W	1,974	1,422	1,066	711	-	286		1,881	1,354	1,016	677	-	273		1,793	1,397	1,048	698	-	281	
30	-1.1	Q(Btu/h)	16,673	13,894	10,421	6,947	-	3,859		17,776	14,814	11,110	7,407	-	4,115		18,486	17,190	12,893	8,595	-	4,775	
		W	1,880	1,354	1,015	677	-	273		1,785	1,285	964	643	-	259		1,688	1,332	999	666	-	268	
25	-3.9	Q(Btu/h)	15,083	12,569	9,427	6,284	-	3,491		16,235	13,529	10,147	6,765	-	3,758		16,960	16,470	12,353	8,235	-	4,575	
		W	1,775	1,278	958	639	-	257		1,679	1,209	906	604	-	243		1,574	1,296	972	648	-	261	
20	-6.7	Q(Btu/h)	13,485	11,238	8,428	5,619	-	3,122		14,698	12,248	9,186	6,124	-	3,402		15,440	15,300	11,475	7,650	-	4,250	
		W	1,658	1,194	896	597	-	240		1,562	1,124	843	562	-	226		1,452	1,217	913	608	-	245	
15	-9.4	Q(Btu/h)	11,885	9,904	7,428	4,952	-	2,751		13,170	10,975	8,231	5,487	-	3,049		13,927	14,040	10,530	7,020	-	3,900	
		W	1,531	1,102	826	551	-	222		1,434	1,033	774	516	-	208		1,324	1,138	853	569	-	229	
10	-12.2	Q(Btu/h)	10,287	8,572	6,429	4,286	-	2,381		11,655	9,712	7,284	4,856	-	2,698		12,420	12,780	9,585	6,390	-	3,550	
		W	1,391	1,002	751	501	-	202		1,296	933	700	467	-	188		1,190	1,037	778	518	-	209	
5	-15.0	Q(Btu/h)	8,696	7,247	5,435	3,623	-	2,013		10,157	8,464	6,348	4,232	-	2,351		10,921	11,250	8,438	5,625	-	3,125	
		W	1,241	894	670	447	-	180		1,147	826	620	413	-	166		1,053	922	691	461	-	186	
0	-17.8	Q(Btu/h)	7,117	5,931	4,448	2,966	-	1,648		8,681	7,235	5,426	3,617	-	2,010		9,429	9,000	6,750	4,500	-	2,500	
		W	1,080	777	583	389	-	157		988	711	533	356	-	143		912	763	572	382	-	154	
-4	-20.0	Q(Btu/h)	5,866	4,889	3,666	2,444	-	1,358		7,519	6,266	4,700	3,133	-	1,741		8,242	9,000	6,750	4,500	-	2,500	
		W	942	678	509	339	-	137		853	614	461	307	-	124		798	763	572	382	-	154	

* Above data is for heating operation without any frost.

SLZ-KF09NA.TH

SUZ-KA09NA2.MX

Rated

Q(Btu/h): 9,000

W: 670

1) COOLING

Indoor W.B. Outdoor D.B. (°F) (°C)		71°F / 21.7°C							67°F / 19.4°C							63°F / 17.2°C						
		Max	Rated	75%	50%	25%	Min		Max	Rated	75%	50%	25%	Min		Max	Rated	75%	50%	25%	Min	
115	46.1	Q(Btu/h)	8,216	8,216	6,162	4,108	-	3,286	7,693	7,693	5,770	3,846	-	3,077		7,021	7,021	5,266	3,510	-	2,808	
		W	753	753	564	376	-	191	734	734	551	367	-	186		704	704	528	352	-	179	
110	43.3	Q(Btu/h)	8,589	8,589	6,442	4,295	-	3,436	7,992	7,992	5,994	3,996	-	3,197		7,320	7,320	5,490	3,660	-	2,928	
		W	740	740	555	370	-	188	722	722	542	361	-	183		688	688	516	344	-	175	
105	40.6	Q(Btu/h)	8,963	8,963	6,722	4,481	-	3,585	8,290	8,290	6,218	4,145	-	3,316		7,693	7,693	5,770	3,846	-	3,077	
		W	731	731	548	366	-	186	704	704	528	352	-	179		673	673	505	337	-	171	
100	37.8	Q(Btu/h)	9,261	9,261	6,946	4,631	-	3,705	8,664	8,664	6,498	4,332	-	3,466		7,992	7,992	5,994	3,996	-	3,197	
		W	710	710	532	355	-	180	688	688	516	344	-	175		658	658	493	329	-	167	
95	35.0	Q(Btu/h)	9,635	9,635	7,226	4,817	-	3,854	9,000	9,000	6,750	4,500	-	3,600		8,365	8,365	6,274	4,183	-	3,346	
		W	698	698	523	349	-	177	670	670	503	335	-	170		642	642	482	321	-	163	
90	32.2	Q(Btu/h)	9,934	9,934	7,450	4,967	-	3,973	9,336	9,336	7,002	4,668	-	3,734		8,664	8,664	6,498	4,332	-	3,466	
		W	673	673	505	337	-	171	642	642	482	321	-	163		618	618	463	309	-	157	
85	29.4	Q(Btu/h)	10,307	10,307	7,730	5,154	-	4,123	9,710	9,710	7,282	4,855	-	3,884		9,037	9,037	6,778	4,519	-	3,615	
		W	649	649	486	324	-	165	618	618	463	309	-	157		597	597	447	298	-	151	
80	26.7	Q(Btu/h)	10,606	10,606	7,954	5,303	-	4,242	10,008	10,008	7,506	5,004	-	4,003		9,411	9,411	7,058	4,705	-	3,764	
		W	624	624	468	312	-	158	590	590	443	295	-	150		572	572	429	286	-	145	
75	23.9	Q(Btu/h)	10,979	10,979	8,234	5,490	-	4,392	10,307	10,307	7,730	5,154	-	4,123		9,747	9,747	7,310	4,873	-	3,899	
		W	597	597	447	298	-	151	563	563	422	281	-	143		550	550	413	275	-	140	
70	21.1	Q(Btu/h)	11,241	11,241	8,430	5,620	-	4,496	10,531	10,531	7,898	5,266	-	4,212		10,083	10,083	7,562	5,041	-	4,033	
		W	566	566	424	283	-	144	538	538	404	269	-	137		517	517	388	259	-	131	
67	19.4	Q(Btu/h)	11,353	11,353	8,515	5,676	-	4,541	10,755	10,755	8,066	5,378	-	4,302		10,307	10,307	7,730	5,154	-	4,123	
		W	538	538	404	269	-	137	517	517	388	259	-	131		489	489	367	245	-	124	

* It may not reach the above capacities in low ambient temperatures.

SLZ-KF09NA.TH
SUZ-KA09NA2.MX
2) HEATING

Rated
Q(Btu/h): 11,000
W: 810

Indoor D.B. Outdoor W.B. (°F) (°C)			77°F / 25.0°C						68°F / 20.0°C						59°F / 15.0°C					
			Max	Rated	75%	50%	25%	Min	Max	Rated	75%	50%	25%	Min	Max	Rated	75%	50%	25%	Min
65	18.3	Q(Btu/h)	15,102	13,844	10,383	6,922	-	5,047	15,741	14,429	10,822	7,215	-	5,260	16,277	14,520	10,890	7,260	-	5,293
		W	1,083	933	700	466	-	265	1,049	904	678	452	-	257	1,020	846	635	423	-	240
60	15.6	Q(Btu/h)	14,324	13,130	9,848	6,565	-	4,787	14,934	13,689	10,267	6,845	-	4,990	15,413	14,025	10,519	7,013	-	5,113
		W	1,070	922	692	461	-	262	1,034	891	668	446	-	253	1,007	838	629	419	-	238
55	12.8	Q(Btu/h)	13,522	12,396	9,297	6,198	-	4,519	14,112	12,936	9,702	6,468	-	4,716	14,551	13,530	10,148	6,765	-	4,932
		W	1,052	907	680	453	-	257	1,014	874	655	437	-	248	987	830	623	415	-	236
50	10.0	Q(Btu/h)	12,701	11,642	8,732	5,821	-	4,244	13,279	12,172	9,129	6,086	-	4,437	13,690	12,980	9,735	6,490	-	4,732
		W	1,029	887	665	443	-	252	989	852	639	426	-	242	960	822	617	411	-	233
45	7.2	Q(Btu/h)	11,861	10,873	8,154	5,436	-	3,964	12,436	11,400	8,550	5,700	-	4,156	12,831	12,430	9,323	6,215	-	4,531
		W	1,001	862	647	431	-	245	959	826	620	413	-	235	927	810	608	405	-	230
40	4.4	Q(Btu/h)	11,006	10,089	7,567	5,045	-	3,678	11,587	10,621	7,966	5,311	-	3,872	11,975	12,100	9,075	6,050	-	4,411
		W	967	833	625	417	-	237	924	796	597	398	-	226	887	802	601	401	-	228
35	1.7	Q(Btu/h)	10,139	9,294	6,971	4,647	-	3,388	10,732	9,838	7,378	4,919	-	3,586	11,121	11,440	8,580	5,720	-	4,170
		W	928	800	600	400	-	227	884	762	571	381	-	216	843	786	589	393	-	223
30	-1.1	Q(Btu/h)	9,263	8,491	6,368	4,245	-	3,095	9,876	9,053	6,790	4,526	-	3,300	10,270	10,505	7,879	5,253	-	3,830
		W	884	762	571	381	-	216	839	723	542	361	-	205	793	749	562	375	-	213
25	-3.9	Q(Btu/h)	8,379	7,681	5,761	3,841	-	2,800	9,019	8,268	6,201	4,134	-	3,014	9,422	10,065	7,549	5,033	-	3,669
		W	834	719	539	359	-	204	789	680	510	340	-	193	740	729	547	365	-	207
20	-6.7	Q(Btu/h)	7,492	6,867	5,151	3,434	-	2,503	8,166	7,485	5,614	3,743	-	2,729	8,578	9,350	7,013	4,675	-	3,409
		W	779	672	504	336	-	191	734	632	474	316	-	180	682	684	513	342	-	194
15	-9.4	Q(Btu/h)	6,603	6,052	4,539	3,026	-	2,206	7,317	6,707	5,030	3,353	-	2,445	7,737	8,580	6,435	4,290	-	3,128
		W	719	620	465	310	-	176	674	581	436	290	-	165	622	640	480	320	-	182
10	-12.2	Q(Btu/h)	5,715	5,239	3,929	2,619	-	1,910	6,475	5,935	4,452	2,968	-	2,164	6,900	7,810	5,858	3,905	-	2,847
		W	654	564	423	282	-	160	609	525	394	262	-	149	559	583	437	292	-	166
5	-15.0	Q(Btu/h)	4,831	4,429	3,321	2,214	-	1,614	5,643	5,173	3,880	2,586	-	1,886	6,067	6,875	5,156	3,438	-	2,506
		W	583	503	377	251	-	143	539	465	348	232	-	132	495	518	389	259	-	147
0	-17.8	Q(Btu/h)	3,954	3,625	2,718	1,812	-	1,321	4,823	4,421	3,316	2,211	-	1,612	5,239	5,500	4,125	2,750	-	2,005
		W	507	437	328	219	-	124	464	400	300	200	-	114	429	429	322	215	-	122
-4	-20.0	Q(Btu/h)	3,259	2,987	2,241	1,494	-	1,089	4,177	3,829	2,872	1,915	-	1,396	4,579	5,500	4,125	2,750	-	2,005
		W	443	382	286	191	-	108	401	345	259	173	-	98	375	429	322	215	-	122

* Above data is for heating operation without any frost.

SLZ-KF12NA.TH**SUZ-KA12NA2.MX****Rated**

Q(Btu/h): 12,000

W: 900

1) COOLING

Indoor W.B. Outdoor D.B. (°F) (°C)			71°F / 21.7°C						67°F / 19.4°C						63°F / 17.2°C					
			Max	Rated	75%	50%	25%	Min	Max	Rated	75%	50%	25%	Min	Max	Rated	75%	50%	25%	Min
115	46.1	Q(Btu/h)	10,954	10,954	8,216	5,477	-	3,560	10,257	10,257	7,693	5,129	-	3,334	9,361	9,361	7,021	4,680	-	3,042
		W	1,011	1,011	758	505	-	270	986	986	740	493	-	263	945	945	709	473	-	252
110	43.3	Q(Btu/h)	11,452	11,452	8,589	5,726	-	3,722	10,656	10,656	7,992	5,328	-	3,463	9,759	9,759	7,320	4,880	-	3,172
		W	995	995	746	497	-	265	970	970	727	485	-	259	925	925	693	462	-	247
105	40.6	Q(Btu/h)	11,950	11,950	8,963	5,975	-	3,884	11,054	11,054	8,290	5,527	-	3,593	10,257	10,257	7,693	5,129	-	3,334
		W	982	982	737	491	-	262	945	945	709	473	-	252	904	904	678	452	-	241
100	37.8	Q(Btu/h)	12,349	12,349	9,261	6,174	-	4,013	11,552	11,552	8,664	5,776	-	3,754	10,656	10,656	7,992	5,328	-	3,463
		W	953	953	715	477	-	254	925	925	693	462	-	247	884	884	663	442	-	236
95	35.0	Q(Btu/h)	12,846	12,846	9,635	6,423	-	4,175	12,000	12,000	9,000	6,000	-	3,900	11,154	11,154	8,365	5,577	-	3,625
		W	937	937	703	468	-	250	900	900	675	450	-	240	863	863	647	432	-	230
90	32.2	Q(Btu/h)	13,245	13,245	9,934	6,622	-	4,305	12,448	12,448	9,336	6,224	-	4,046	11,552	11,552	8,664	5,776	-	3,754
		W	904	904	678	452	-	241	863	863	647	432	-	230	830	830	623	415	-	221
85	29.4	Q(Btu/h)	13,743	13,743	10,307	6,871	-	4,466	12,946	12,946	9,710	6,473	-	4,207	12,050	12,050	9,037	6,025	-	3,916
		W	871	871	653	436	-	232	830	830	623	415	-	221	801	801	601	401	-	214
80	26.7	Q(Btu/h)	14,141	14,141	10,606	7,071	-	4,596	13,344	13,344	10,008	6,672	-	4,337	12,548	12,548	9,411	6,274	-	4,078
		W	838	838	629	419	-	224	793	793	595	397	-	212	768	768	576	384	-	205
75	23.9	Q(Btu/h)	14,639	14,639	10,979	7,320	-	4,758	13,743	13,743	10,307	6,871	-	4,466	12,996	12,996	9,747	6,498	-	4,224
		W	801	801	601	401	-	214	756	756	567	378	-	202	739	739	554	369	-	197
70	21.1	Q(Btu/h)	14,988	14,988	11,241	7,494	-	4,871	14,041	14,041	10,531	7,021	-	4,563	13,444	13,444	10,083	6,722	-	4,369
		W	760	760	570	380	-	203	723	723	542	362	-	193	695	695	521	347	-	185
67	19.4	Q(Btu/h)	15,137	15,137	11,353	7,568	-	4,920	14,340	14,340	10,755	7,170	-	4,661	13,743	13,743	10,307	6,871	-	4,466
		W	723	723	542	362	-	193	695	695	521	347	-	185	658	658	493	329	-	175

* It may not reach the above capacities in low ambient temperatures.

SLZ-KF12NA.TH
SUZ-KA12NA2.MX
2) HEATING

Rated
Q(Btu/h): 13,000
W: 1,310

Indoor D.B. Outdoor W.B. (°F) (°C)			77°F / 25.0°C						68°F / 20.0°C						59°F / 15.0°C					
			Max	Rated	75%	50%	25%	Min	Max	Rated	75%	50%	25%	Min	Max	Rated	75%	50%	25%	Min
65	18.3	Q(Btu/h)	16,361	16,361	12,270	8,180	-	6,041	17,053	17,053	12,790	8,526	-	6,296	17,633	17,160	12,870	8,580	-	6,336
		W	1,509	1,509	1,132	754	-	311	1,462	1,462	1,097	731	-	301	1,421	1,369	1,027	684	-	282
60	15.6	Q(Btu/h)	15,518	15,518	11,638	7,759	-	5,730	16,178	16,178	12,134	8,089	-	5,973	16,697	16,575	12,431	8,288	-	6,120
		W	1,491	1,491	1,118	746	-	307	1,441	1,441	1,081	721	-	297	1,404	1,356	1,017	678	-	279
55	12.8	Q(Btu/h)	14,649	14,649	10,987	7,325	-	5,409	15,288	15,288	11,466	7,644	-	5,645	15,763	15,990	11,993	7,995	-	5,904
		W	1,466	1,466	1,100	733	-	302	1,413	1,413	1,060	707	-	291	1,376	1,343	1,007	671	-	277
50	10.0	Q(Btu/h)	13,759	13,759	10,319	6,879	-	5,080	14,386	14,386	10,789	7,193	-	5,312	14,831	15,340	11,505	7,670	-	5,664
		W	1,434	1,434	1,076	717	-	296	1,378	1,378	1,034	689	-	284	1,338	1,330	997	665	-	274
45	7.2	Q(Btu/h)	12,849	12,849	9,637	6,425	-	4,744	13,473	13,473	10,105	6,736	-	4,975	13,901	14,690	11,018	7,345	-	5,424
		W	1,395	1,395	1,046	697	-	287	1,336	1,336	1,002	668	-	275	1,292	1,310	983	655	-	270
40	4.4	Q(Btu/h)	11,923	11,923	8,943	5,962	-	4,403	12,552	12,552	9,414	6,276	-	4,635	12,973	14,300	10,725	7,150	-	5,280
		W	1,348	1,348	1,011	674	-	278	1,288	1,288	966	644	-	265	1,237	1,297	973	648	-	267
35	1.7	Q(Btu/h)	10,984	10,984	8,238	5,492	-	4,056	11,627	11,627	8,720	5,813	-	4,293	12,048	13,520	10,140	6,760	-	4,992
		W	1,293	1,293	970	647	-	267	1,232	1,232	924	616	-	254	1,174	1,271	953	635	-	262
30	-1.1	Q(Btu/h)	10,035	10,035	7,526	5,017	-	3,705	10,699	10,699	8,024	5,349	-	3,950	11,126	12,415	9,311	6,208	-	4,584
		W	1,232	1,232	924	616	-	254	1,169	1,169	877	585	-	241	1,106	1,212	909	606	-	250
25	-3.9	Q(Btu/h)	9,078	9,078	6,808	4,539	-	3,352	9,771	9,771	7,328	4,886	-	3,608	10,208	11,895	8,921	5,948	-	4,392
		W	1,163	1,163	872	581	-	240	1,099	1,099	825	550	-	227	1,031	1,179	884	590	-	243
20	-6.7	Q(Btu/h)	8,116	8,116	6,087	4,058	-	2,997	8,846	8,846	6,635	4,423	-	3,266	9,293	11,050	8,288	5,525	-	4,080
		W	1,086	1,086	815	543	-	224	1,023	1,023	767	511	-	211	951	1,107	830	553	-	228
15	-9.4	Q(Btu/h)	7,153	7,153	5,365	3,576	-	2,641	7,926	7,926	5,945	3,963	-	2,927	8,382	10,140	7,605	5,070	-	3,744
		W	1,002	1,002	752	501	-	207	939	939	705	470	-	194	867	1,035	776	517	-	213
10	-12.2	Q(Btu/h)	6,191	6,191	4,643	3,096	-	2,286	7,015	7,015	5,261	3,507	-	2,590	7,475	9,230	6,923	4,615	-	3,408
		W	911	911	684	456	-	188	849	849	637	424	-	175	780	943	707	472	-	194
5	-15.0	Q(Btu/h)	5,234	5,234	3,925	2,617	-	1,932	6,113	6,113	4,585	3,057	-	2,257	6,573	8,125	6,094	4,063	-	3,000
		W	813	813	610	406	-	168	751	751	564	376	-	155	689	838	629	419	-	173
0	-17.8	Q(Btu/h)	4,284	4,284	3,213	2,142	-	1,582	5,225	5,225	3,919	2,612	-	1,929	5,675	6,500	4,875	3,250	-	2,400
		W	707	707	530	354	-	146	647	647	485	324	-	133	597	694	521	347	-	143
-4	-20.0	Q(Btu/h)	3,531	3,531	2,648	1,765	-	1,304	4,526	4,526	3,394	2,263	-	1,671	4,961	6,500	4,875	3,250	-	2,400
		W	617	617	463	309	-	127	559	559	419	279	-	115	523	694	521	347	-	143

* Above data is for heating operation without any frost.

SLZ-KF15NA.TH
SUZ-KA15NA2.MX
1) COOLING

Rated
Q(Btu/h): 14,100
W: 1,150

Indoor W.B. Outdoor D.B. (°F) (°C)			71°F / 21.7°C						67°F / 19.4°C						63°F / 17.2°C					
			Max	Rated	75%	50%	25%	Min	Max	Rated	75%	50%	25%	Min	Max	Rated	75%	50%	25%	Min
115	46.1	Q(Btu/h)	12,871	12,871	9,654	6,436	-	4,656	12,052	12,052	9,039	6,026	-	4,359	10,999	10,999	8,249	5,500	-	3,978
		W	1,292	1,292	969	646	-	303	1,260	1,260	945	630	-	296	1,208	1,208	906	604	-	284
110	43.3	Q(Btu/h)	13,456	13,456	10,092	6,728	-	4,867	12,520	12,520	9,390	6,260	-	4,529	11,467	11,467	8,600	5,734	-	4,148
		W	1,271	1,271	953	635	-	298	1,239	1,239	929	620	-	291	1,182	1,182	886	591	-	277
105	40.6	Q(Btu/h)	14,041	14,041	10,531	7,021	-	5,079	12,988	12,988	9,741	6,494	-	4,698	12,052	12,052	9,039	6,026	-	4,359
		W	1,255	1,255	941	628	-	295	1,208	1,208	906	604	-	284	1,155	1,155	866	578	-	271
100	37.8	Q(Btu/h)	14,510	14,510	10,882	7,255	-	5,248	13,573	13,573	10,180	6,787	-	4,910	12,520	12,520	9,390	6,260	-	4,529
		W	1,218	1,218	914	609	-	286	1,182	1,182	886	591	-	277	1,129	1,129	847	564	-	265
95	35.0	Q(Btu/h)	15,095	15,095	11,321	7,547	-	5,460	14,100	14,100	10,575	7,050	-	5,100	13,105	13,105	9,829	6,553	-	4,740
		W	1,197	1,197	898	599	-	281	1,150	1,150	863	575	-	270	1,103	1,103	827	551	-	259
90	32.2	Q(Btu/h)	15,563	15,563	11,672	7,781	-	5,629	14,627	14,627	10,970	7,313	-	5,290	13,573	13,573	10,180	6,787	-	4,910
		W	1,155	1,155	866	578	-	271	1,103	1,103	827	551	-	259	1,061	1,061	796	530	-	249
85	29.4	Q(Btu/h)	16,148	16,148	12,111	8,074	-	5,841	15,212	15,212	11,409	7,606	-	5,502	14,159	14,159	10,619	7,079	-	5,121
		W	1,113	1,113	835	557	-	261	1,061	1,061	796	530	-	249	1,024	1,024	768	512	-	240
80	26.7	Q(Btu/h)	16,616	16,616	12,462	8,308	-	6,010	15,680	15,680	11,760	7,840	-	5,671	14,744	14,744	11,058	7,372	-	5,333
		W	1,071	1,071	803	536	-	252	1,013	1,013	760	507	-	238	982	982	736	491	-	231
75	23.9	Q(Btu/h)	17,201	17,201	12,901	8,600	-	6,222	16,148	16,148	12,111	8,074	-	5,841	15,270	15,270	11,453	7,635	-	5,523
		W	1,024	1,024	768	512	-	240	966	966	725	483	-	227	944	944	708	472	-	222
70	21.1	Q(Btu/h)	17,610	17,610	13,208	8,805	-	6,370	16,499	16,499	12,374	8,249	-	5,968	15,797	15,797	11,848	7,898	-	5,714
		W	971	971	729	486	-	228	924	924	693	462	-	217	887	887	666	444	-	208
67	19.4	Q(Btu/h)	17,786	17,786	13,339	8,893	-	6,433	16,850	16,850	12,637	8,425	-	6,095	16,148	16,148	12,111	8,074	-	5,841
		W	924	924	693	462	-	217	887	887	666	444	-	208	840	840	630	420	-	197

* It may not reach the above capacities in low ambient temperatures.

SLZ-KF15NA.TH
SUZ-KA15NA2.MX
2) HEATING

Rated
Q(Btu/h): 18,000
W: 1,730

Indoor D.B. Outdoor W.B. (°F) (°C)			77°F / 25.0°C						68°F / 20.0°C						59°F / 15.0°C					
			Max	Rated	75%	50%	25%	Min	Max	Rated	75%	50%	25%	Min	Max	Rated	75%	50%	25%	Min
65	18.3	Q(Btu/h)	24,038	22,653	16,990	11,327	-	6,418	25,055	23,612	17,709	11,806	-	6,690	25,907	23,760	17,820	11,880	-	6,732
		W	2,280	1,993	1,494	996	-	322	2,210	1,931	1,448	966	-	313	2,148	1,808	1,356	904	-	293
60	15.6	Q(Btu/h)	22,799	21,486	16,114	10,743	-	6,088	23,770	22,401	16,800	11,200	-	6,347	24,532	22,950	17,213	11,475	-	6,503
		W	2,254	1,969	1,477	985	-	319	2,178	1,903	1,427	952	-	308	2,122	1,791	1,343	895	-	290
55	12.8	Q(Btu/h)	21,523	20,284	15,213	10,142	-	5,747	22,462	21,168	15,876	10,584	-	5,998	23,160	22,140	16,605	11,070	-	6,273
		W	2,216	1,937	1,452	968	-	313	2,136	1,866	1,400	933	-	302	2,080	1,773	1,330	887	-	287
50	10.0	Q(Btu/h)	20,215	19,051	14,288	9,525	-	5,398	21,136	19,918	14,939	9,959	-	5,644	21,790	21,240	15,930	10,620	-	6,018
		W	2,168	1,894	1,420	947	-	307	2,083	1,820	1,365	910	-	295	2,023	1,756	1,317	878	-	284
45	7.2	Q(Btu/h)	18,879	17,791	13,344	8,896	-	5,041	19,794	18,654	13,991	9,327	-	5,285	20,423	20,340	15,255	10,170	-	5,763
		W	2,108	1,842	1,381	921	-	298	2,020	1,765	1,324	882	-	286	1,952	1,730	1,298	865	-	280
40	4.4	Q(Btu/h)	17,518	16,509	12,382	8,255	-	4,678	18,442	17,380	13,035	8,690	-	4,924	19,060	19,800	14,850	9,900	-	5,610
		W	2,037	1,780	1,335	890	-	288	1,946	1,700	1,275	850	-	275	1,869	1,713	1,285	856	-	277
35	1.7	Q(Btu/h)	16,138	15,209	11,407	7,604	-	4,309	17,082	16,099	12,074	8,049	-	4,561	17,701	18,720	14,040	9,360	-	5,304
		W	1,955	1,708	1,281	854	-	276	1,862	1,627	1,220	813	-	263	1,775	1,678	1,259	839	-	272
30	-1.1	Q(Btu/h)	14,743	13,894	10,421	6,947	-	3,937	15,719	14,814	11,110	7,407	-	4,197	16,347	17,190	12,893	8,595	-	4,871
		W	1,862	1,626	1,220	813	-	263	1,767	1,544	1,158	772	-	250	1,671	1,600	1,200	800	-	259
25	-3.9	Q(Btu/h)	13,337	12,569	9,427	6,284	-	3,561	14,356	13,529	10,147	6,765	-	3,833	14,997	16,470	12,353	8,235	-	4,667
		W	1,757	1,535	1,152	768	-	248	1,662	1,452	1,089	726	-	235	1,558	1,557	1,168	779	-	252
20	-6.7	Q(Btu/h)	11,924	11,238	8,428	5,619	-	3,184	12,997	12,248	9,186	6,124	-	3,470	13,653	15,300	11,475	7,650	-	4,335
		W	1,642	1,434	1,076	717	-	232	1,546	1,351	1,013	675	-	219	1,438	1,462	1,096	731	-	237
15	-9.4	Q(Btu/h)	10,509	9,904	7,428	4,952	-	2,806	11,646	10,975	8,231	5,487	-	3,110	12,315	14,040	10,530	7,020	-	3,978
		W	1,515	1,324	993	662	-	214	1,420	1,241	930	620	-	201	1,311	1,367	1,025	683	-	221
10	-12.2	Q(Btu/h)	9,096	8,572	6,429	4,286	-	2,429	10,306	9,712	7,284	4,856	-	2,752	10,982	12,780	9,585	6,390	-	3,621
		W	1,378	1,204	903	602	-	195	1,283	1,121	841	561	-	181	1,178	1,246	934	623	-	202
5	-15.0	Q(Btu/h)	7,690	7,247	5,435	3,623	-	2,053	8,982	8,464	6,348	4,232	-	2,398	9,657	11,250	8,438	5,625	-	3,188
		W	1,229	1,074	805	537	-	174	1,136	992	744	496	-	161	1,042	1,107	830	554	-	179
0	-17.8	Q(Btu/h)	6,294	5,931	4,448	2,966	-	1,680	7,677	7,235	5,426	3,617	-	2,050	8,338	9,000	6,750	4,500	-	2,550
		W	1,069	934	700	467	-	151	978	855	641	427	-	138	903	917	688	458	-	148
-4	-20.0	Q(Btu/h)	5,187	4,889	3,666	2,444	-	1,385	6,649	6,266	4,700	3,133	-	1,775	7,288	9,000	6,750	4,500	-	2,550
		W	933	815	611	408	-	132	844	738	553	369	-	119	790	917	688	458	-	148

* Above data is for heating operation without any frost.

PEAD-A09AA7.MX

SUZ-KA09NA2.MX

1) COOLING

Rated

Q(Btu/h): 9,000

W: 720

Indoor W.B.			71°F / 21.7°C							67°F / 19.4°C							63°F / 17.2°C						
Outdoor D.B.			Max	Rated	75%	50%	25%	Min	Max	Rated	75%	50%	25%	Min	Max	Rated	75%	50%	25%	Min			
(°F)	(°C)																						
115	46.1	Q(Btu/h)	8,216	8,216	6,162	4,108	-	3,925	7,693	7,693	5,770	3,846	-	3,676	7,021	7,021	5,266	3,510	-	3,354			
		W	809	809	607	404	-	270	789	789	592	395	-	263	756	756	567	378	-	252			
110	43.3	Q(Btu/h)	8,589	8,589	6,442	4,295	-	4,104	7,992	7,992	5,994	3,996	-	3,818	7,320	7,320	5,490	3,660	-	3,497			
		W	796	796	597	398	-	265	776	776	582	388	-	259	740	740	555	370	-	247			
105	40.6	Q(Btu/h)	8,963	8,963	6,722	4,481	-	4,282	8,290	8,290	6,218	4,145	-	3,961	7,693	7,693	5,770	3,846	-	3,676			
		W	786	786	589	393	-	262	756	756	567	378	-	252	723	723	542	362	-	241			
100	37.8	Q(Btu/h)	9,261	9,261	6,946	4,631	-	4,425	8,664	8,664	6,498	4,332	-	4,139	7,992	7,992	5,994	3,996	-	3,818			
		W	763	763	572	381	-	254	740	740	555	370	-	247	707	707	530	353	-	236			
95	35.0	Q(Btu/h)	9,635	9,635	7,226	4,817	-	4,603	9,000	9,000	6,750	4,500	-	4,300	8,365	8,365	6,274	4,183	-	3,997			
		W	750	750	562	375	-	250	720	720	540	360	-	240	690	690	518	345	-	230			
90	32.2	Q(Btu/h)	9,934	9,934	7,450	4,967	-	4,746	9,336	9,336	7,002	4,668	-	4,461	8,664	8,664	6,498	4,332	-	4,139			
		W	723	723	542	362	-	241	690	690	518	345	-	230	664	664	498	332	-	221			
85	29.4	Q(Btu/h)	10,307	10,307	7,730	5,154	-	4,924	9,710	9,710	7,282	4,855	-	4,639	9,037	9,037	6,778	4,519	-	4,318			
		W	697	697	523	348	-	232	664	664	498	332	-	221	641	641	481	321	-	214			
80	26.7	Q(Btu/h)	10,606	10,606	7,954	5,303	-	5,067	10,008	10,008	7,506	5,004	-	4,782	9,411	9,411	7,058	4,705	-	4,496			
		W	671	671	503	335	-	224	635	635	476	317	-	212	615	615	461	307	-	205			
75	23.9	Q(Btu/h)	10,979	10,979	8,234	5,490	-	5,246	10,307	10,307	7,730	5,154	-	4,924	9,747	9,747	7,310	4,873	-	4,657			
		W	641	641	481	321	-	214	605	605	454	302	-	202	591	591	443	296	-	197			
70	21.1	Q(Btu/h)	11,241	11,241	8,430	5,620	-	5,371	10,531	10,531	7,898	5,266	-	5,032	10,083	10,083	7,562	5,041	-	4,817			
		W	608	608	456	304	-	203	579	579	434	289	-	193	556	556	417	278	-	185			
67	19.4	Q(Btu/h)	11,353	11,353	8,515	5,676	-	5,424	10,755	10,755	8,066	5,378	-	5,139	10,307	10,307	7,730	5,154	-	4,924			
		W	579	579	434	289	-	193	556	556	417	278	-	185	526	526	395	263	-	175			

* It may not reach the above capacities in low ambient temperatures.

PEAD-A09AA7.MX

SUZ-KA09NA2.MX

2) HEATING

Rated

Q(Btu/h): 12,000

W: 900

Indoor D.B.			77°F / 25.0°C							68°F / 20.0°C							59°F / 15.0°C						
Outdoor W.B.			Max	Rated	75%	50%	25%	Min		Max	Rated	75%	50%	25%	Min		Max	Rated	75%	50%	25%	Min	
(°F)	(°C)																						
65	18.3	Q(Btu/h)	16,361	15,102	11,327	7,551	-	4,984		17,053	15,741	11,806	7,871	-	5,195		17,633	15,840	11,880	7,920	-	5,227	
		W	1,221	1,037	777	518	-	253		1,183	1,005	753	502	-	246		1,150	941	705	470	-	230	
60	15.6	Q(Btu/h)	15,518	14,324	10,743	7,162	-	4,727		16,178	14,934	11,200	7,467	-	4,928		16,697	15,300	11,475	7,650	-	5,049	
		W	1,207	1,025	768	512	-	250		1,166	990	743	495	-	242		1,136	932	699	466	-	228	
55	12.8	Q(Btu/h)	14,649	13,522	10,142	6,761	-	4,462		15,288	14,112	10,584	7,056	-	4,657		15,763	14,760	11,070	7,380	-	4,871	
		W	1,187	1,007	756	504	-	246		1,144	971	728	485	-	237		1,113	923	692	461	-	226	
50	10.0	Q(Btu/h)	13,759	12,701	9,525	6,350	-	4,191		14,386	13,279	9,959	6,639	-	4,382		14,831	14,160	10,620	7,080	-	4,673	
		W	1,160	985	739	493	-	241		1,115	947	710	473	-	231		1,083	914	685	457	-	223	
45	7.2	Q(Btu/h)	12,849	11,861	8,896	5,930	-	3,914		13,473	12,436	9,327	6,218	-	4,104		13,901	13,560	10,170	6,780	-	4,475	
		W	1,128	958	719	479	-	234		1,081	918	689	459	-	224		1,045	900	675	450	-	220	
40	4.4	Q(Btu/h)	11,923	11,006	8,255	5,503	-	3,632		12,552	11,587	8,690	5,793	-	3,824		12,973	13,200	9,900	6,600	-	4,356	
		W	1,090	926	694	463	-	226		1,042	885	663	442	-	216		1,001	891	668	446	-	218	
35	1.7	Q(Btu/h)	10,984	10,139	7,604	5,070	-	3,346		11,627	10,732	8,049	5,366	-	3,542		12,048	12,480	9,360	6,240	-	4,118	
		W	1,046	889	666	444	-	217		997	846	635	423	-	207		950	873	655	437	-	213	
30	-1.1	Q(Btu/h)	10,035	9,263	6,947	4,631	-	3,057		10,699	9,876	7,407	4,938	-	3,259		11,126	11,460	8,595	5,730	-	3,782	
		W	997	846	635	423	-	207		946	803	602	402	-	196		895	833	624	416	-	204	
25	-3.9	Q(Btu/h)	9,078	8,379	6,284	4,190	-	2,765		9,771	9,019	6,765	4,510	-	2,976		10,208	10,980	8,235	5,490	-	3,623	
		W	941	799	599	399	-	195		890	755	567	378	-	185		834	810	608	405	-	198	
20	-6.7	Q(Btu/h)	8,116	7,492	5,619	3,746	-	2,472		8,846	8,166	6,124	4,083	-	2,695		9,293	10,200	7,650	5,100	-	3,366	
		W	879	746	560	373	-	182		828	703	527	351	-	172		770	761	570	380	-	186	
15	-9.4	Q(Btu/h)	7,153	6,603	4,952	3,301	-	2,179		7,926	7,317	5,487	3,658	-	2,414		8,382	9,360	7,020	4,680	-	3,089	
		W	811	689	517	344	-	168		760	645	484	323	-	158		702	711	533	356	-	174	
10	-12.2	Q(Btu/h)	6,191	5,715	4,286	2,857	-	1,886		7,015	6,475	4,856	3,237	-	2,137		7,475	8,520	6,390	4,260	-	2,812	
		W	737	626	470	313	-	153		687	583	437	292	-	143		631	648	486	324	-	158	
5	-15.0	Q(Btu/h)	5,234	4,831	3,623	2,416	-	1,594		6,113	5,643	4,232	2,821	-	1,862		6,573	7,500	5,625	3,750	-	2,475	
		W	658	559	419	279	-	137		608	516	387	258	-	126		558	576	432	288	-	141	
0	-17.8	Q(Btu/h)	4,284	3,954	2,966	1,977	-	1,305		5,225	4,823	3,617	2,412	-	1,592		5,675	6,000	4,500	3,000	-	1,980	
		W	572	486	364	243	-	119		524	445	333	222	-	109		483	477	358	239	-	117	
-4	-20.0	Q(Btu/h)	3,531	3,259	2,444	1,630	-	1,075		4,526	4,177	3,133	2,089	-	1,379		4,961	6,000	4,500	3,000	-	1,980	
		W	499	424	318	212	-	104		452	384	288	192	-	94		423	477	358	239	-	117	

* Above data is for heating operation without any frost.

PEAD-A12AA7.MX

SUZ-KA12NA2.MX

Rated

Q(Btu/h): 12,000

W: 930

1) COOLING

Indoor W.B. Outdoor D.B. (°F) (°C)		71°F / 21.7°C							67°F / 19.4°C							63°F / 17.2°C						
		Max	Rated	75%	50%	25%	Min		Max	Rated	75%	50%	25%	Min		Max	Rated	75%	50%	25%	Min	
115	46.1	Q(Btu/h)	10,954	10,954	8,216	5,477	-	4,017	10,257	10,257	7,693	5,129	-	3,761		9,361	9,361	7,021	4,680	-	3,432	
		W	1,045	1,045	783	522	-	292	1,019	1,019	764	510	-	285		977	977	733	488	-	273	
110	43.3	Q(Btu/h)	11,452	11,452	8,589	5,726	-	4,199	10,656	10,656	7,992	5,328	-	3,907		9,759	9,759	7,320	4,880	-	3,578	
		W	1,028	1,028	771	514	-	287	1,002	1,002	752	501	-	280		955	955	717	478	-	267	
105	40.6	Q(Btu/h)	11,950	11,950	8,963	5,975	-	4,382	11,054	11,054	8,290	5,527	-	4,053		10,257	10,257	7,693	5,129	-	3,761	
		W	1,015	1,015	761	507	-	284	977	977	733	488	-	273		934	934	701	467	-	261	
100	37.8	Q(Btu/h)	12,349	12,349	9,261	6,174	-	4,528	11,552	11,552	8,664	5,776	-	4,236		10,656	10,656	7,992	5,328	-	3,907	
		W	985	985	739	493	-	275	955	955	717	478	-	267		913	913	685	457	-	255	
95	35.0	Q(Btu/h)	12,846	12,846	9,635	6,423	-	4,710	12,000	12,000	9,000	6,000	-	4,400		11,154	11,154	8,365	5,577	-	4,090	
		W	968	968	726	484	-	271	930	930	698	465	-	260		892	892	669	446	-	249	
90	32.2	Q(Btu/h)	13,245	13,245	9,934	6,622	-	4,856	12,448	12,448	9,336	6,224	-	4,564		11,552	11,552	8,664	5,776	-	4,236	
		W	934	934	701	467	-	261	892	892	669	446	-	249		858	858	643	429	-	240	
85	29.4	Q(Btu/h)	13,743	13,743	10,307	6,871	-	5,039	12,946	12,946	9,710	6,473	-	4,747		12,050	12,050	9,037	6,025	-	4,418	
		W	900	900	675	450	-	252	858	858	643	429	-	240		828	828	621	414	-	232	
80	26.7	Q(Btu/h)	14,141	14,141	10,606	7,071	-	5,185	13,344	13,344	10,008	6,672	-	4,893		12,548	12,548	9,411	6,274	-	4,601	
		W	866	866	650	433	-	242	820	820	615	410	-	229		794	794	596	397	-	222	
75	23.9	Q(Btu/h)	14,639	14,639	10,979	7,320	-	5,368	13,743	13,743	10,307	6,871	-	5,039		12,996	12,996	9,747	6,498	-	4,765	
		W	828	828	621	414	-	232	781	781	586	391	-	218		764	764	573	382	-	213	
70	21.1	Q(Btu/h)	14,988	14,988	11,241	7,494	-	5,495	14,041	14,041	10,531	7,021	-	5,149		13,444	13,444	10,083	6,722	-	4,929	
		W	786	786	589	393	-	220	747	747	561	374	-	209		718	718	538	359	-	201	
67	19.4	Q(Btu/h)	15,137	15,137	11,353	7,568	-	5,550	14,340	14,340	10,755	7,170	-	5,258		13,743	13,743	10,307	6,871	-	5,039	
		W	747	747	561	374	-	209	718	718	538	359	-	201		679	679	510	340	-	190	

* It may not reach the above capacities in low ambient temperatures.

PEAD-A12AA7.MX

SUZ-KA12NA2.MX

Rated

Q(Btu/h): 15,000

W: 1,160

2) HEATING

Indoor D.B.			77°F / 25.0°C							68°F / 20.0°C							59°F / 15.0°C						
Outdoor W.B.			Max	Rated	75%	50%	25%	Min		Max	Rated	75%	50%	25%	Min		Max	Rated	75%	50%	25%	Min	
(°F)	(°C)																						
65	18.3	Q(Btu/h)	21,395	18,878	14,158	9,439	-	6,041		22,300	19,676	14,757	9,838	-	6,296		23,059	19,800	14,850	9,900	-	6,336	
		W	1,612	1,336	1,002	668	-	288		1,563	1,295	971	647	-	279		1,519	1,212	909	606	-	261	
60	15.6	Q(Btu/h)	20,292	17,905	13,429	8,952	-	5,730		21,156	18,667	14,000	9,334	-	5,973		21,835	19,125	14,344	9,563	-	6,120	
		W	1,594	1,321	990	660	-	285		1,540	1,276	957	638	-	275		1,500	1,201	900	600	-	259	
55	12.8	Q(Btu/h)	19,157	16,903	12,677	8,452	-	5,409		19,992	17,640	13,230	8,820	-	5,645		20,613	18,450	13,838	9,225	-	5,904	
		W	1,567	1,298	974	649	-	280		1,510	1,251	939	626	-	270		1,470	1,189	892	595	-	256	
50	10.0	Q(Btu/h)	17,993	15,876	11,907	7,938	-	5,080		18,812	16,599	12,449	8,299	-	5,312		19,394	17,700	13,275	8,850	-	5,664	
		W	1,533	1,270	952	635	-	274		1,473	1,220	915	610	-	263		1,430	1,177	883	589	-	254	
45	7.2	Q(Btu/h)	16,803	14,826	11,120	7,413	-	4,744		17,618	15,545	11,659	7,773	-	4,975		18,178	16,950	12,713	8,475	-	5,424	
		W	1,490	1,235	926	617	-	266		1,428	1,183	888	592	-	255		1,380	1,160	870	580	-	250	
40	4.4	Q(Btu/h)	15,592	13,758	10,318	6,879	-	4,403		16,414	14,483	10,862	7,242	-	4,635		16,964	16,500	12,375	8,250	-	5,280	
		W	1,440	1,193	895	597	-	257		1,376	1,140	855	570	-	246		1,322	1,148	861	574	-	248	
35	1.7	Q(Btu/h)	14,364	12,674	9,506	6,337	-	4,056		15,204	13,415	10,062	6,708	-	4,293		15,755	15,600	11,700	7,800	-	4,992	
		W	1,382	1,145	859	573	-	247		1,316	1,091	818	545	-	235		1,255	1,125	844	563	-	243	
30	-1.1	Q(Btu/h)	13,122	11,578	8,684	5,789	-	3,705		13,991	12,345	9,259	6,172	-	3,950		14,549	14,325	10,744	7,163	-	4,584	
		W	1,316	1,091	818	545	-	235		1,249	1,035	776	518	-	223		1,182	1,073	805	537	-	231	
25	-3.9	Q(Btu/h)	11,871	10,474	7,856	5,237	-	3,352		12,778	11,274	8,456	5,637	-	3,608		13,348	13,725	10,294	6,863	-	4,392	
		W	1,242	1,029	772	515	-	222		1,175	974	730	487	-	210		1,102	1,044	783	522	-	225	
20	-6.7	Q(Btu/h)	10,613	9,365	7,023	4,682	-	2,997		11,568	10,207	7,655	5,103	-	3,266		12,152	12,750	9,563	6,375	-	4,080	
		W	1,161	962	721	481	-	207		1,093	906	679	453	-	195		1,016	980	735	490	-	211	
15	-9.4	Q(Btu/h)	9,354	8,253	6,190	4,127	-	2,641		10,365	9,146	6,859	4,573	-	2,927		10,961	11,700	8,775	5,850	-	3,744	
		W	1,071	888	666	444	-	191		1,004	832	624	416	-	179		927	916	687	458	-	198	
10	-12.2	Q(Btu/h)	8,096	7,144	5,358	3,572	-	2,286		9,173	8,094	6,070	4,047	-	2,590		9,775	10,650	7,988	5,325	-	3,408	
		W	974	807	605	404	-	174		907	752	564	376	-	162		833	835	626	418	-	180	
5	-15.0	Q(Btu/h)	6,844	6,039	4,529	3,019	-	1,932		7,994	7,054	5,290	3,527	-	2,257		8,595	9,375	7,031	4,688	-	3,000	
		W	869	720	540	360	-	155		803	665	499	333	-	143		737	742	557	371	-	160	
0	-17.8	Q(Btu/h)	5,602	4,943	3,707	2,471	-	1,582		6,833	6,029	4,522	3,014	-	1,929		7,421	7,500	5,625	3,750	-	2,400	
		W	756	626	470	313	-	135		692	573	430	286	-	123		638	615	461	307	-	133	
-4	-20.0	Q(Btu/h)	4,617	4,074	3,055	2,037	-	1,304		5,918	5,222	3,916	2,611	-	1,671		6,487	7,500	5,625	3,750	-	2,400	
		W	660	547	410	273	-	118		597	495	371	247	-	107		559	615	461	307	-	133	

* Above data is for heating operation without any frost.

PEAD-A15AA7.MX

SUZ-KA15NA2.MX

Rated

Q(Btu/h): 15,000

W: 1,150

1) COOLING

Indoor W.B.			71°F / 21.7°C							67°F / 19.4°C							63°F / 17.2°C						
Outdoor D.B.			Max	Rated	75%	50%	25%	Min		Max	Rated	75%	50%	25%	Min		Max	Rated	75%	50%	25%	Min	
(°F)	(°C)																						
115	46.1	Q(Btu/h)	13,693	13,693	10,270	6,846	-	5,021		12,822	12,822	9,616	6,411	-	4,701		11,701	11,701	8,776	5,851	-	4,290	
		W	1,292	1,292	969	646	-	359		1,260	1,260	945	630	-	351		1,208	1,208	906	604	-	336	
110	43.3	Q(Btu/h)	14,315	14,315	10,737	7,158	-	5,249		13,320	13,320	9,990	6,660	-	4,884		12,199	12,199	9,149	6,100	-	4,473	
		W	1,271	1,271	953	635	-	354		1,239	1,239	929	620	-	345		1,182	1,182	886	591	-	329	
105	40.6	Q(Btu/h)	14,938	14,938	11,203	7,469	-	5,477		13,817	13,817	10,363	6,909	-	5,066		12,822	12,822	9,616	6,411	-	4,701	
		W	1,255	1,255	941	628	-	349		1,208	1,208	906	604	-	336		1,155	1,155	866	578	-	321	
100	37.8	Q(Btu/h)	15,436	15,436	11,577	7,718	-	5,660		14,440	14,440	10,830	7,220	-	5,295		13,320	13,320	9,990	6,660	-	4,884	
		W	1,218	1,218	914	609	-	339		1,182	1,182	886	591	-	329		1,129	1,129	847	564	-	314	
95	35.0	Q(Btu/h)	16,058	16,058	12,044	8,029	-	5,888		15,000	15,000	11,250	7,500	-	5,500		13,942	13,942	10,456	6,971	-	5,112	
		W	1,197	1,197	898	599	-	333		1,150	1,150	863	575	-	320		1,103	1,103	827	551	-	307	
90	32.2	Q(Btu/h)	16,556	16,556	12,417	8,278	-	6,071		15,560	15,560	11,670	7,780	-	5,705		14,440	14,440	10,830	7,220	-	5,295	
		W	1,155	1,155	866	578	-	321		1,103	1,103	827	551	-	307		1,061	1,061	796	530	-	295	
85	29.4	Q(Btu/h)	17,178	17,178	12,884	8,589	-	6,299		16,183	16,183	12,137	8,091	-	5,934		15,062	15,062	11,297	7,531	-	5,523	
		W	1,113	1,113	835	557	-	310		1,061	1,061	796	530	-	295		1,024	1,024	768	512	-	285	
80	26.7	Q(Btu/h)	17,676	17,676	13,257	8,838	-	6,481		16,680	16,680	12,510	8,340	-	6,116		15,685	15,685	11,763	7,842	-	5,751	
		W	1,071	1,071	803	536	-	298		1,013	1,013	760	507	-	282		982	982	736	491	-	273	
75	23.9	Q(Btu/h)	18,299	18,299	13,724	9,149	-	6,710		17,178	17,178	12,884	8,589	-	6,299		16,245	16,245	12,184	8,122	-	5,956	
		W	1,024	1,024	768	512	-	285		966	966	725	483	-	269		944	944	708	472	-	263	
70	21.1	Q(Btu/h)	18,734	18,734	14,051	9,367	-	6,869		17,552	17,552	13,164	8,776	-	6,436		16,805	16,805	12,604	8,402	-	6,162	
		W	971	971	729	486	-	270		924	924	693	462	-	257		887	887	666	444	-	247	
67	19.4	Q(Btu/h)	18,921	18,921	14,191	9,461	-	6,938		17,925	17,925	13,444	8,963	-	6,573		17,178	17,178	12,884	8,589	-	6,299	
		W	924	924	693	462	-	257		887	887	666	444	-	247		840	840	630	420	-	234	

* It may not reach the above capacities in low ambient temperatures.

PEAD-A15AA7.MX

SUZ-KA15NA2.MX

Rated

Q(Btu/h): 18,000

W: 1,350

2) HEATING

Indoor D.B.			77°F / 25.0°C							68°F / 20.0°C							59°F / 15.0°C						
Outdoor W.B.			Max	Rated	75%	50%	25%	Min		Max	Rated	75%	50%	25%	Min		Max	Rated	75%	50%	25%	Min	
(°F)	(°C)																						
65	18.3	Q(Btu/h)	27,058	22,653	16,990	11,327	-	6,167		28,203	23,612	17,709	11,806	-	6,428		29,163	23,760	17,820	11,880	-	6,468	
		W	2,016	1,555	1,166	777	-	322		1,953	1,507	1,130	753	-	313		1,899	1,411	1,058	705	-	293	
60	15.6	Q(Btu/h)	25,664	21,486	16,114	10,743	-	5,849		26,756	22,401	16,800	11,200	-	6,098		27,615	22,950	17,213	11,475	-	6,248	
		W	1,992	1,537	1,153	768	-	319		1,925	1,485	1,114	743	-	308		1,875	1,397	1,048	699	-	290	
55	12.8	Q(Btu/h)	24,228	20,284	15,213	10,142	-	5,522		25,284	21,168	15,876	10,584	-	5,763		26,070	22,140	16,605	11,070	-	6,027	
		W	1,959	1,511	1,133	756	-	313		1,888	1,456	1,092	728	-	302		1,838	1,384	1,038	692	-	287	
50	10.0	Q(Btu/h)	22,755	19,051	14,288	9,525	-	5,186		23,792	19,918	14,939	9,959	-	5,422		24,528	21,240	15,930	10,620	-	5,782	
		W	1,916	1,478	1,108	739	-	307		1,841	1,420	1,065	710	-	295		1,788	1,370	1,028	685	-	284	
45	7.2	Q(Btu/h)	21,251	17,791	13,344	8,896	-	4,843		22,282	18,654	13,991	9,327	-	5,078		22,989	20,340	15,255	10,170	-	5,537	
		W	1,863	1,437	1,078	719	-	298		1,785	1,377	1,033	689	-	286		1,725	1,350	1,013	675	-	280	
40	4.4	Q(Btu/h)	19,720	16,509	12,382	8,255	-	4,494		20,759	17,380	13,035	8,690	-	4,731		21,455	19,800	14,850	9,900	-	5,390	
		W	1,800	1,389	1,042	694	-	288		1,720	1,327	995	663	-	275		1,652	1,337	1,002	668	-	277	
35	1.7	Q(Btu/h)	18,166	15,209	11,407	7,604	-	4,140		19,229	16,099	12,074	8,049	-	4,382		19,925	18,720	14,040	9,360	-	5,096	
		W	1,728	1,333	1,000	666	-	276		1,646	1,269	952	635	-	263		1,569	1,310	982	655	-	272	
30	-1.1	Q(Btu/h)	16,596	13,894	10,421	6,947	-	3,782		17,694	14,814	11,110	7,407	-	4,033		18,401	17,190	12,893	8,595	-	4,680	
		W	1,645	1,269	952	635	-	263		1,562	1,205	904	602	-	250		1,477	1,249	937	624	-	259	
25	-3.9	Q(Btu/h)	15,013	12,569	9,427	6,284	-	3,422		16,160	13,529	10,147	6,765	-	3,683		16,882	16,470	12,353	8,235	-	4,484	
		W	1,553	1,198	899	599	-	248		1,469	1,133	850	567	-	235		1,377	1,215	911	608	-	252	
20	-6.7	Q(Btu/h)	13,423	11,238	8,428	5,619	-	3,059		14,630	12,248	9,186	6,124	-	3,334		15,369	15,300	11,475	7,650	-	4,165	
		W	1,451	1,119	840	560	-	232		1,366	1,054	791	527	-	219		1,271	1,141	856	570	-	237	
15	-9.4	Q(Btu/h)	11,830	9,904	7,428	4,952	-	2,696		13,109	10,975	8,231	5,487	-	2,988		13,862	14,040	10,530	7,020	-	3,822	
		W	1,339	1,033	775	517	-	214		1,255	968	726	484	-	201		1,158	1,067	800	533	-	221	
10	-12.2	Q(Btu/h)	10,239	8,572	6,429	4,286	-	2,334		11,601	9,712	7,284	4,856	-	2,644		12,362	12,780	9,585	6,390	-	3,479	
		W	1,218	939	704	470	-	195		1,134	875	656	437	-	181		1,041	972	729	486	-	202	
5	-15.0	Q(Btu/h)	8,656	7,247	5,435	3,623	-	1,973		10,110	8,464	6,348	4,232	-	2,304		10,870	11,250	8,438	5,625	-	3,063	
		W	1,086	838	628	419	-	174		1,004	774	581	387	-	161		921	864	648	432	-	179	
0	-17.8	Q(Btu/h)	7,084	5,931	4,448	2,966	-	1,615		8,641	7,235	5,426	3,617	-	1,969		9,386	9,000	6,750	4,500	-	2,450	
		W	945	729	547	364	-	151		864	667	500	333	-	138		798	716	537	358	-	148	
-4	-20.0	Q(Btu/h)	5,839	4,889	3,666	2,444	-	1,331		7,485	6,266	4,700	3,133	-	1,706		8,204	9,000	6,750	4,500	-	2,450	
		W	825	636	477	318	-	132		746	576	432	288	-	119		698	716	537	358	-	148	

* Above data is for heating operation without any frost.

SVZ-KP12NA.MX

SUZ-KA12NA2.MX

1) COOLING

Rated

Q(Btu/h): 12,000

W: 940

Indoor W.B. Outdoor D.B. (°F) (°C)			71°F / 21.7°C							67°F / 19.4°C							63°F / 17.2°C						
			Max	Rated	75%	50%	25%	Min		Max	Rated	75%	50%	25%	Min		Max	Rated	75%	50%	25%	Min	
115	46.1	Q(Btu/h)	10,954	10,954	8,216	5,477	-	3,925		10,257	10,257	7,693	5,129	-	3,676		9,361	9,361	7,021	4,680	-	3,354	
		W	1,056	1,056	792	528	-	292		1,030	1,030	773	515	-	285		987	987	740	494	-	273	
110	43.3	Q(Btu/h)	11,452	11,452	8,589	5,726	-	4,104		10,656	10,656	7,992	5,328	-	3,818		9,759	9,759	7,320	4,880	-	3,497	
		W	1,039	1,039	779	519	-	287		1,013	1,013	760	506	-	280		966	966	724	483	-	267	
105	40.6	Q(Btu/h)	11,950	11,950	8,963	5,975	-	4,282		11,054	11,054	8,290	5,527	-	3,961		10,257	10,257	7,693	5,129	-	3,676	
		W	1,026	1,026	769	513	-	284		987	987	740	494	-	273		944	944	708	472	-	261	
100	37.8	Q(Btu/h)	12,349	12,349	9,261	6,174	-	4,425		11,552	11,552	8,664	5,776	-	4,139		10,656	10,656	7,992	5,328	-	3,818	
		W	996	996	747	498	-	275		966	966	724	483	-	267		923	923	692	461	-	255	
95	35.0	Q(Btu/h)	12,846	12,846	9,635	6,423	-	4,603		12,000	12,000	9,000	6,000	-	4,300		11,154	11,154	8,365	5,577	-	3,997	
		W	979	979	734	489	-	271		940	940	705	470	-	260		901	901	676	451	-	249	
90	32.2	Q(Btu/h)	13,245	13,245	9,934	6,622	-	4,746		12,448	12,448	9,336	6,224	-	4,461		11,552	11,552	8,664	5,776	-	4,139	
		W	944	944	708	472	-	261		901	901	676	451	-	249		867	867	650	434	-	240	
85	29.4	Q(Btu/h)	13,743	13,743	10,307	6,871	-	4,924		12,946	12,946	9,710	6,473	-	4,639		12,050	12,050	9,037	6,025	-	4,318	
		W	910	910	682	455	-	252		867	867	650	434	-	240		837	837	628	418	-	232	
80	26.7	Q(Btu/h)	14,141	14,141	10,606	7,071	-	5,067		13,344	13,344	10,008	6,672	-	4,782		12,548	12,548	9,411	6,274	-	4,496	
		W	876	876	657	438	-	242		828	828	621	414	-	229		803	803	602	401	-	222	
75	23.9	Q(Btu/h)	14,639	14,639	10,979	7,320	-	5,246		13,743	13,743	10,307	6,871	-	4,924		12,996	12,996	9,747	6,498	-	4,657	
		W	837	837	628	418	-	232		790	790	592	395	-	218		772	772	579	386	-	213	
70	21.1	Q(Btu/h)	14,988	14,988	11,241	7,494	-	5,371		14,041	14,041	10,531	7,021	-	5,032		13,444	13,444	10,083	6,722	-	4,817	
		W	794	794	596	397	-	220		755	755	567	378	-	209		725	725	544	363	-	201	
67	19.4	Q(Btu/h)	15,137	15,137	11,353	7,568	-	5,424		14,340	14,340	10,755	7,170	-	5,139		13,743	13,743	10,307	6,871	-	4,924	
		W	755	755	567	378	-	209		725	725	544	363	-	201		687	687	515	343	-	190	

* It may not reach the above capacities in low ambient temperatures.

SVZ-KP12NA.MX
SUZ-KA12NA2.MX
2) HEATING

Rated
Q(Btu/h): 15,000
W: 1,210

Indoor D.B. Outdoor W.B. (°F) (°C)			77°F / 25.0°C						68°F / 20.0°C						59°F / 15.0°C					
			Max	Rated	75%	50%	25%	Min	Max	Rated	75%	50%	25%	Min	Max	Rated	75%	50%	25%	Min
65	18.3	Q(Btu/h)	21,017	18,878	14,158	9,439	-	5,915	21,906	19,676	14,757	9,838	-	6,165	22,652	19,800	14,850	9,900	-	6,204
		W	1,659	1,394	1,045	697	-	311	1,607	1,351	1,013	675	-	301	1,562	1,264	948	632	-	282
60	15.6	Q(Btu/h)	19,934	17,905	13,429	8,952	-	5,610	20,783	18,667	14,000	9,334	-	5,849	21,450	19,125	14,344	9,563	-	5,993
		W	1,639	1,377	1,033	689	-	307	1,584	1,331	998	666	-	297	1,543	1,252	939	626	-	279
55	12.8	Q(Btu/h)	18,819	16,903	12,677	8,452	-	5,296	19,640	17,640	13,230	8,820	-	5,527	20,249	18,450	13,838	9,225	-	5,781
		W	1,612	1,354	1,016	677	-	302	1,553	1,305	979	653	-	291	1,512	1,240	930	620	-	277
50	10.0	Q(Btu/h)	17,675	15,876	11,907	7,938	-	4,974	18,480	16,599	12,449	8,299	-	5,201	19,052	17,700	13,275	8,850	-	5,546
		W	1,576	1,325	993	662	-	296	1,515	1,273	955	637	-	284	1,471	1,228	921	614	-	274
45	7.2	Q(Btu/h)	16,507	14,826	11,120	7,413	-	4,646	17,307	15,545	11,659	7,773	-	4,871	17,857	16,950	12,713	8,475	-	5,311
		W	1,533	1,288	966	644	-	287	1,469	1,234	926	617	-	275	1,420	1,210	908	605	-	270
40	4.4	Q(Btu/h)	15,317	13,758	10,318	6,879	-	4,311	16,125	14,483	10,862	7,242	-	4,538	16,665	16,500	12,375	8,250	-	5,170
		W	1,481	1,245	934	622	-	278	1,415	1,189	892	595	-	265	1,359	1,198	898	599	-	267
35	1.7	Q(Btu/h)	14,111	12,674	9,506	6,337	-	3,971	14,936	13,415	10,062	6,708	-	4,204	15,477	15,600	11,700	7,800	-	4,888
		W	1,422	1,195	896	597	-	267	1,354	1,138	853	569	-	254	1,291	1,174	880	587	-	262
30	-1.1	Q(Btu/h)	12,891	11,578	8,684	5,789	-	3,628	13,744	12,345	9,259	6,172	-	3,868	14,293	14,325	10,744	7,163	-	4,489
		W	1,354	1,138	853	569	-	254	1,285	1,080	810	540	-	241	1,215	1,119	839	560	-	250
25	-3.9	Q(Btu/h)	11,661	10,474	7,856	5,237	-	3,282	12,552	11,274	8,456	5,637	-	3,533	13,113	13,725	10,294	6,863	-	4,301
		W	1,278	1,074	805	537	-	240	1,209	1,016	762	508	-	227	1,133	1,089	817	545	-	243
20	-6.7	Q(Btu/h)	10,426	9,365	7,023	4,682	-	2,934	11,364	10,207	7,655	5,103	-	3,198	11,938	12,750	9,563	6,375	-	3,995
		W	1,194	1,003	752	502	-	224	1,124	945	709	472	-	211	1,046	1,022	767	511	-	228
15	-9.4	Q(Btu/h)	9,189	8,253	6,190	4,127	-	2,586	10,182	9,146	6,859	4,573	-	2,866	10,767	11,700	8,775	5,850	-	3,666
		W	1,102	926	694	463	-	207	1,033	868	651	434	-	194	953	956	717	478	-	213
10	-12.2	Q(Btu/h)	7,953	7,144	5,358	3,572	-	2,238	9,011	8,094	6,070	4,047	-	2,536	9,602	10,650	7,988	5,325	-	3,337
		W	1,002	842	631	421	-	188	933	784	588	392	-	175	857	871	653	436	-	194
5	-15.0	Q(Btu/h)	6,723	6,039	4,529	3,019	-	1,892	7,853	7,054	5,290	3,527	-	2,210	8,443	9,375	7,031	4,688	-	2,938
		W	894	751	563	375	-	168	826	694	521	347	-	155	758	774	581	387	-	173
0	-17.8	Q(Btu/h)	5,503	4,943	3,707	2,471	-	1,549	6,712	6,029	4,522	3,014	-	1,889	7,290	7,500	5,625	3,750	-	2,350
		W	777	653	490	327	-	146	711	598	448	299	-	133	657	641	481	321	-	143
-4	-20.0	Q(Btu/h)	4,536	4,074	3,055	2,037	-	1,276	5,814	5,222	3,916	2,611	-	1,636	6,372	7,500	5,625	3,750	-	2,350
		W	678	570	428	285	-	127	614	516	387	258	-	115	575	641	481	321	-	143

* Above data is for heating operation without any frost.

MLZ-KP09NA-U1**SUZ-KA09NA2.MX****Rated**

Q(Btu/h): 9,000

W: 710

1) COOLING

Indoor W.B. Outdoor D.B. (°F) (°C)			71°F / 21.7°C						67°F / 19.4°C						63°F / 17.2°C					
			Max	Rated	75%	50%	25%	Min	Max	Rated	75%	50%	25%	Min	Max	Rated	75%	50%	25%	Min
115	46.1	Q(Btu/h)	8,216	8,216	6,162	4,108	-	3,286	7,693	7,693	5,770	3,846	-	3,077	7,021	7,021	5,266	3,510	-	2,808
		W	798	798	598	399	-	225	778	778	584	389	-	219	746	746	559	373	-	210
110	43.3	Q(Btu/h)	8,589	8,589	6,442	4,295	-	3,436	7,992	7,992	5,994	3,996	-	3,197	7,320	7,320	5,490	3,660	-	2,928
		W	785	785	588	392	-	221	765	765	574	383	-	216	729	729	547	365	-	205
105	40.6	Q(Btu/h)	8,963	8,963	6,722	4,481	-	3,585	8,290	8,290	6,218	4,145	-	3,316	7,693	7,693	5,770	3,846	-	3,077
		W	775	775	581	387	-	218	746	746	559	373	-	210	713	713	535	357	-	201
100	37.8	Q(Btu/h)	9,261	9,261	6,946	4,631	-	3,705	8,664	8,664	6,498	4,332	-	3,466	7,992	7,992	5,994	3,996	-	3,197
		W	752	752	564	376	-	212	729	729	547	365	-	205	697	697	523	349	-	196
95	35.0	Q(Btu/h)	9,635	9,635	7,226	4,817	-	3,854	9,000	9,000	6,750	4,500	-	3,600	8,365	8,365	6,274	4,183	-	3,346
		W	739	739	554	370	-	208	710	710	533	355	-	200	681	681	511	340	-	192
90	32.2	Q(Btu/h)	9,934	9,934	7,450	4,967	-	3,973	9,336	9,336	7,002	4,668	-	3,734	8,664	8,664	6,498	4,332	-	3,466
		W	713	713	535	357	-	201	681	681	511	340	-	192	655	655	491	327	-	184
85	29.4	Q(Btu/h)	10,307	10,307	7,730	5,154	-	4,123	9,710	9,710	7,282	4,855	-	3,884	9,037	9,037	6,778	4,519	-	3,615
		W	687	687	515	344	-	194	655	655	491	327	-	184	632	632	474	316	-	178
80	26.7	Q(Btu/h)	10,606	10,606	7,954	5,303	-	4,242	10,008	10,008	7,506	5,004	-	4,003	9,411	9,411	7,058	4,705	-	3,764
		W	661	661	496	331	-	186	626	626	469	313	-	176	606	606	455	303	-	171
75	23.9	Q(Btu/h)	10,979	10,979	8,234	5,490	-	4,392	10,307	10,307	7,730	5,154	-	4,123	9,747	9,747	7,310	4,873	-	3,899
		W	632	632	474	316	-	178	597	597	447	298	-	168	583	583	437	291	-	164
70	21.1	Q(Btu/h)	11,241	11,241	8,430	5,620	-	4,496	10,531	10,531	7,898	5,266	-	4,212	10,083	10,083	7,562	5,041	-	4,033
		W	600	600	450	300	-	169	571	571	428	285	-	161	548	548	411	274	-	154
67	19.4	Q(Btu/h)	11,353	11,353	8,515	5,676	-	4,541	10,755	10,755	8,066	5,378	-	4,302	10,307	10,307	7,730	5,154	-	4,123
		W	571	571	428	285	-	161	548	548	411	274	-	154	519	519	389	259	-	146

* It may not reach the above capacities in low ambient temperatures.

MLZ-KP09NA-U1
SUZ-KA09NA2.MX
2) HEATING

Rated
Q(Btu/h): 12,000
W: 860

Indoor D.B. Outdoor W.B. (°F) (°C)			77°F / 25.0°C						68°F / 20.0°C						59°F / 15.0°C					
			Max	Rated	75%	50%	25%	Min	Max	Rated	75%	50%	25%	Min	Max	Rated	75%	50%	25%	Min
65	18.3	Q(Btu/h)	16,361	15,102	11,327	7,551	-	5,047	17,053	15,741	11,806	7,871	-	5,260	17,633	15,840	11,880	7,920	-	5,293
		W	1,152	990	743	495	-	253	1,116	960	720	480	-	246	1,085	899	674	449	-	230
60	15.6	Q(Btu/h)	15,518	14,324	10,743	7,162	-	4,787	16,178	14,934	11,200	7,467	-	4,990	16,697	15,300	11,475	7,650	-	5,113
		W	1,138	979	734	489	-	250	1,100	946	710	473	-	242	1,072	890	668	445	-	228
55	12.8	Q(Btu/h)	14,649	13,522	10,142	6,761	-	4,519	15,288	14,112	10,584	7,056	-	4,716	15,763	14,760	11,070	7,380	-	4,932
		W	1,119	963	722	481	-	246	1,079	928	696	464	-	237	1,050	882	661	441	-	226
50	10.0	Q(Btu/h)	13,759	12,701	9,525	6,350	-	4,244	14,386	13,279	9,959	6,639	-	4,437	14,831	14,160	10,620	7,080	-	4,732
		W	1,095	941	706	471	-	241	1,052	905	679	452	-	231	1,022	873	655	436	-	223
45	7.2	Q(Btu/h)	12,849	11,861	8,896	5,930	-	3,964	13,473	12,436	9,327	6,218	-	4,156	13,901	13,560	10,170	6,780	-	4,531
		W	1,065	916	687	458	-	234	1,020	877	658	439	-	224	986	860	645	430	-	220
40	4.4	Q(Btu/h)	11,923	11,006	8,255	5,503	-	3,678	12,552	11,587	8,690	5,793	-	3,872	12,973	13,200	9,900	6,600	-	4,411
		W	1,029	885	664	442	-	226	983	845	634	423	-	216	944	851	639	426	-	218
35	1.7	Q(Btu/h)	10,984	10,139	7,604	5,070	-	3,388	11,627	10,732	8,049	5,366	-	3,586	12,048	12,480	9,360	6,240	-	4,170
		W	987	849	637	425	-	217	940	809	607	404	-	207	897	834	626	417	-	213
30	-1.1	Q(Btu/h)	10,035	9,263	6,947	4,631	-	3,095	10,699	9,876	7,407	4,938	-	3,300	11,126	11,460	8,595	5,730	-	3,830
		W	940	809	606	404	-	207	892	768	576	384	-	196	844	796	597	398	-	204
25	-3.9	Q(Btu/h)	9,078	8,379	6,284	4,190	-	2,800	9,771	9,019	6,765	4,510	-	3,014	10,208	10,980	8,235	5,490	-	3,669
		W	887	763	572	382	-	195	839	722	541	361	-	185	787	774	581	387	-	198
20	-6.7	Q(Btu/h)	8,116	7,492	5,619	3,746	-	2,503	8,846	8,166	6,124	4,083	-	2,729	9,293	10,200	7,650	5,100	-	3,409
		W	829	713	535	357	-	182	781	672	504	336	-	172	726	727	545	363	-	186
15	-9.4	Q(Btu/h)	7,153	6,603	4,952	3,301	-	2,206	7,926	7,317	5,487	3,658	-	2,445	8,382	9,360	7,020	4,680	-	3,128
		W	765	658	494	329	-	168	717	617	462	308	-	158	662	679	510	340	-	174
10	-12.2	Q(Btu/h)	6,191	5,715	4,286	2,857	-	1,910	7,015	6,475	4,856	3,237	-	2,164	7,475	8,520	6,390	4,260	-	2,847
		W	696	598	449	299	-	153	648	557	418	279	-	143	595	619	464	310	-	158
5	-15.0	Q(Btu/h)	5,234	4,831	3,623	2,416	-	1,614	6,113	5,643	4,232	2,821	-	1,886	6,573	7,500	5,625	3,750	-	2,506
		W	621	534	400	267	-	137	574	493	370	247	-	126	526	550	413	275	-	141
0	-17.8	Q(Btu/h)	4,284	3,954	2,966	1,977	-	1,321	5,225	4,823	3,617	2,412	-	1,612	5,675	6,000	4,500	3,000	-	2,005
		W	540	464	348	232	-	119	494	425	319	212	-	109	456	456	342	228	-	117
-4	-20.0	Q(Btu/h)	3,531	3,259	2,444	1,630	-	1,089	4,526	4,177	3,133	2,089	-	1,396	4,961	6,000	4,500	3,000	-	2,005
		W	471	405	304	203	-	104	426	367	275	183	-	94	399	456	342	228	-	117

* Above data is for heating operation without any frost.

MLZ-KP12NA-U1**SUZ-KA12NA2.MX****Rated**

Q(Btu/h): 12,000

W: 960

1) COOLING

Indoor W.B. Outdoor D.B. (°F) (°C)			71°F / 21.7°C						67°F / 19.4°C						63°F / 17.2°C					
			Max	Rated	75%	50%	25%	Min	Max	Rated	75%	50%	25%	Min	Max	Rated	75%	50%	25%	Min
115	46.1	Q(Btu/h)	10,954	10,954	8,216	5,477	-	3,560	10,257	10,257	7,693	5,129	-	3,334	9,361	9,361	7,021	4,680	-	3,042
		W	1,078	1,078	809	539	-	258	1,052	1,052	789	526	-	252	1,008	1,008	756	504	-	242
110	43.3	Q(Btu/h)	11,452	11,452	8,589	5,726	-	3,722	10,656	10,656	7,992	5,328	-	3,463	9,759	9,759	7,320	4,880	-	3,172
		W	1,061	1,061	796	530	-	254	1,035	1,035	776	517	-	248	986	986	740	493	-	236
105	40.6	Q(Btu/h)	11,950	11,950	8,963	5,975	-	3,884	11,054	11,054	8,290	5,527	-	3,593	10,257	10,257	7,693	5,129	-	3,334
		W	1,048	1,048	786	524	-	251	1,008	1,008	756	504	-	242	964	964	723	482	-	231
100	37.8	Q(Btu/h)	12,349	12,349	9,261	6,174	-	4,013	11,552	11,552	8,664	5,776	-	3,754	10,656	10,656	7,992	5,328	-	3,463
		W	1,017	1,017	763	508	-	244	986	986	740	493	-	236	942	942	707	471	-	226
95	35.0	Q(Btu/h)	12,846	12,846	9,635	6,423	-	4,175	12,000	12,000	9,000	6,000	-	3,900	11,154	11,154	8,365	5,577	-	3,625
		W	999	999	750	500	-	239	960	960	720	480	-	230	921	921	690	460	-	221
90	32.2	Q(Btu/h)	13,245	13,245	9,934	6,622	-	4,305	12,448	12,448	9,336	6,224	-	4,046	11,552	11,552	8,664	5,776	-	3,754
		W	964	964	723	482	-	231	921	921	690	460	-	221	885	885	664	443	-	212
85	29.4	Q(Btu/h)	13,743	13,743	10,307	6,871	-	4,466	12,946	12,946	9,710	6,473	-	4,207	12,050	12,050	9,037	6,025	-	3,916
		W	929	929	697	465	-	223	885	885	664	443	-	212	855	855	641	427	-	205
80	26.7	Q(Btu/h)	14,141	14,141	10,606	7,071	-	4,596	13,344	13,344	10,008	6,672	-	4,337	12,548	12,548	9,411	6,274	-	4,078
		W	894	894	671	447	-	214	846	846	635	423	-	203	820	820	615	410	-	196
75	23.9	Q(Btu/h)	14,639	14,639	10,979	7,320	-	4,758	13,743	13,743	10,307	6,871	-	4,466	12,996	12,996	9,747	6,498	-	4,224
		W	855	855	641	427	-	205	807	807	605	403	-	193	788	788	591	394	-	189
70	21.1	Q(Btu/h)	14,988	14,988	11,241	7,494	-	4,871	14,041	14,041	10,531	7,021	-	4,563	13,444	13,444	10,083	6,722	-	4,369
		W	811	811	608	405	-	194	772	772	579	386	-	185	741	741	556	370	-	177
67	19.4	Q(Btu/h)	15,137	15,137	11,353	7,568	-	4,920	14,340	14,340	10,755	7,170	-	4,661	13,743	13,743	10,307	6,871	-	4,466
		W	772	772	579	386	-	185	741	741	556	370	-	177	701	701	526	351	-	168

* It may not reach the above capacities in low ambient temperatures.

MLZ-KP12NA-U1
SUZ-KA12NA2.MX
2) HEATING

Rated
Q(Btu/h): 15,400
W: 1,300

Indoor D.B. Outdoor W.B. (°F) (°C)			77°F / 25.0°C						68°F / 20.0°C						59°F / 15.0°C					
			Max	Rated	75%	50%	25%	Min	Max	Rated	75%	50%	25%	Min	Max	Rated	75%	50%	25%	Min
65	18.3	Q(Btu/h)	21,395	19,381	14,536	9,691	-	5,789	22,300	20,201	15,151	10,101	-	6,034	23,059	20,328	15,246	10,164	-	6,072
		W	1,958	1,497	1,123	749	-	311	1,898	1,451	1,088	726	-	301	1,845	1,359	1,019	679	-	282
60	15.6	Q(Btu/h)	20,292	18,382	13,787	9,191	-	5,491	21,156	19,165	14,374	9,582	-	5,725	21,835	19,635	14,726	9,818	-	5,865
		W	1,935	1,480	1,110	740	-	307	1,870	1,430	1,073	715	-	297	1,822	1,346	1,009	673	-	279
55	12.8	Q(Btu/h)	19,157	17,354	13,015	8,677	-	5,184	19,992	18,111	13,583	9,055	-	5,410	20,613	18,942	14,207	9,471	-	5,658
		W	1,903	1,455	1,091	728	-	302	1,834	1,402	1,052	701	-	291	1,786	1,333	999	666	-	277
50	10.0	Q(Btu/h)	17,993	16,299	12,224	8,150	-	4,869	18,812	17,041	12,781	8,521	-	5,090	19,394	18,172	13,629	9,086	-	5,428
		W	1,861	1,423	1,067	712	-	296	1,789	1,368	1,026	684	-	284	1,737	1,320	990	660	-	274
45	7.2	Q(Btu/h)	16,803	15,222	11,416	7,611	-	4,547	17,618	15,960	11,970	7,980	-	4,767	18,178	17,402	13,052	8,701	-	5,198
		W	1,810	1,384	1,038	692	-	287	1,734	1,326	995	663	-	275	1,676	1,300	975	650	-	270
40	4.4	Q(Btu/h)	15,592	14,125	10,594	7,062	-	4,219	16,414	14,870	11,152	7,435	-	4,442	16,964	16,940	12,705	8,470	-	5,060
		W	1,749	1,337	1,003	669	-	278	1,671	1,278	958	639	-	265	1,605	1,287	965	644	-	267
35	1.7	Q(Btu/h)	14,364	13,012	9,759	6,506	-	3,887	15,204	13,773	10,330	6,887	-	4,114	15,755	16,016	12,012	8,008	-	4,784
		W	1,678	1,283	963	642	-	267	1,599	1,222	917	611	-	254	1,524	1,261	946	631	-	262
30	-1.1	Q(Btu/h)	13,122	11,887	8,915	5,944	-	3,551	13,991	12,674	9,505	6,337	-	3,786	14,549	14,707	11,030	7,354	-	4,393
		W	1,598	1,222	917	611	-	254	1,517	1,160	870	580	-	241	1,435	1,203	902	601	-	250
25	-3.9	Q(Btu/h)	11,871	10,753	8,065	5,377	-	3,212	12,778	11,575	8,681	5,787	-	3,457	13,348	14,091	10,568	7,046	-	4,209
		W	1,509	1,154	865	577	-	240	1,427	1,091	818	546	-	227	1,338	1,170	878	585	-	243
20	-6.7	Q(Btu/h)	10,613	9,614	7,211	4,807	-	2,872	11,568	10,479	7,859	5,240	-	3,130	12,152	13,090	9,818	6,545	-	3,910
		W	1,410	1,078	808	539	-	224	1,327	1,015	761	508	-	211	1,234	1,099	824	549	-	228
15	-9.4	Q(Btu/h)	9,354	8,473	6,355	4,237	-	2,531	10,365	9,390	7,042	4,695	-	2,805	10,961	12,012	9,009	6,006	-	3,588
		W	1,301	995	746	497	-	207	1,219	932	699	466	-	194	1,125	1,027	770	514	-	213
10	-12.2	Q(Btu/h)	8,096	7,334	5,501	3,667	-	2,191	9,173	8,310	6,232	4,155	-	2,482	9,775	10,934	8,201	5,467	-	3,266
		W	1,183	904	678	452	-	188	1,102	842	632	421	-	175	1,012	936	702	468	-	194
5	-15.0	Q(Btu/h)	6,844	6,200	4,650	3,100	-	1,852	7,994	7,242	5,431	3,621	-	2,163	8,595	9,625	7,219	4,813	-	2,875
		W	1,055	807	605	403	-	168	975	746	559	373	-	155	895	832	624	416	-	173
0	-17.8	Q(Btu/h)	5,602	5,074	3,806	2,537	-	1,516	6,833	6,190	4,642	3,095	-	1,849	7,421	7,700	5,775	3,850	-	2,300
		W	918	702	526	351	-	146	840	642	482	321	-	133	775	689	517	345	-	143
-4	-20.0	Q(Btu/h)	4,617	4,182	3,137	2,091	-	1,249	5,918	5,361	4,021	2,680	-	1,601	6,487	7,700	5,775	3,850	-	2,300
		W	801	613	459	306	-	127	725	554	416	277	-	115	678	689	517	345	-	143

* Above data is for heating operation without any frost.



mitsubishi electric corporation

HEAD OFFICE : TOKYO BUILDING, 2-7-3, MARUNOUCHI, CHIYODA-KU, TOKYO 100-8310, JAPAN
