



# P-SERIES

Air Conditioners

## **PVA-A12, 18, 24, 30, 36, 42AA7**

---

SERVICE PARTS MANUAL



# Table of Contents

1. EXTERNAL PARTS ..... 5

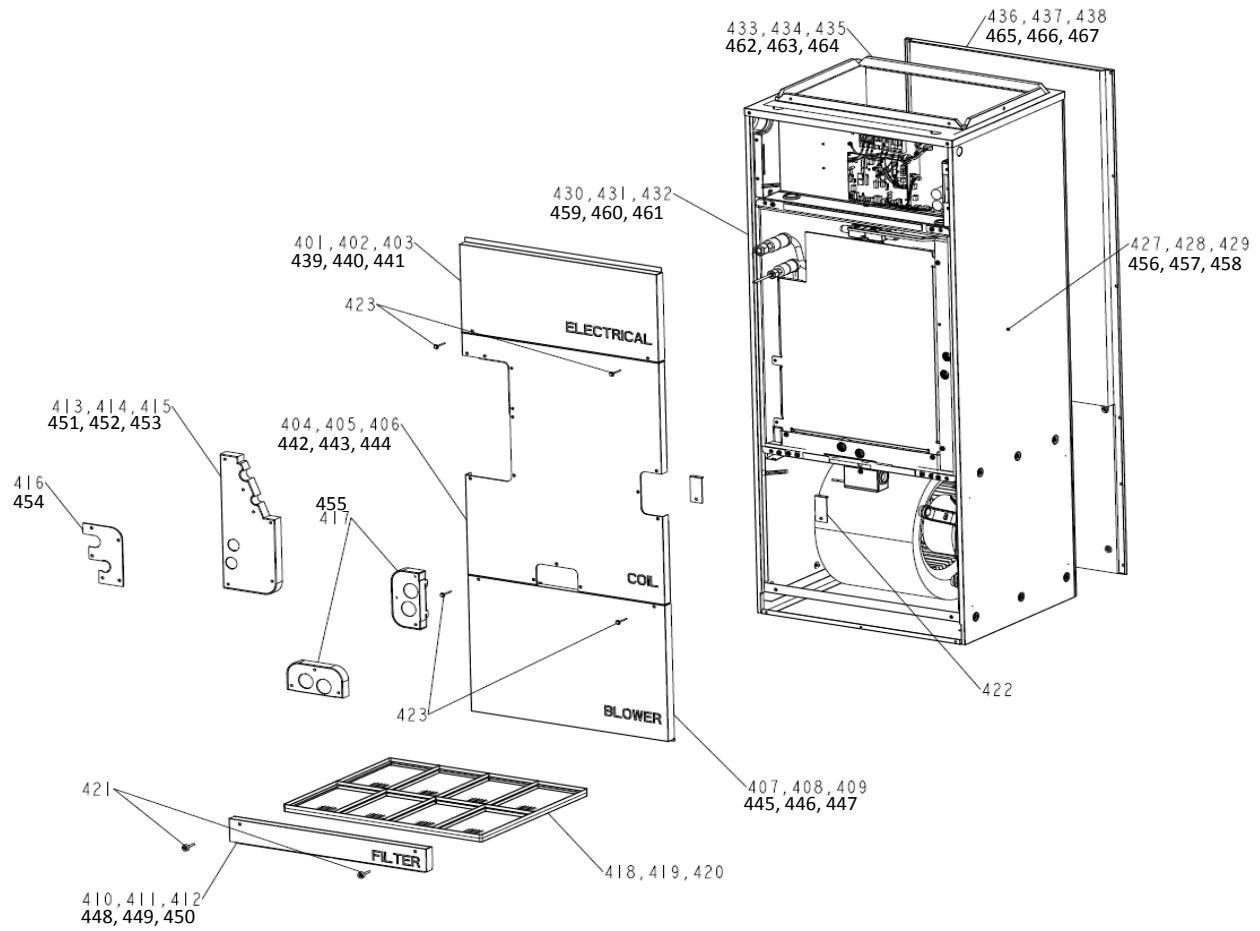
2. HEX ASSEMBLY PARTS ..... 7

3. BLOWER PARTS ..... 9

4. CONTROL BOX PARTS ..... 11



# 1. EXTERNAL PARTS



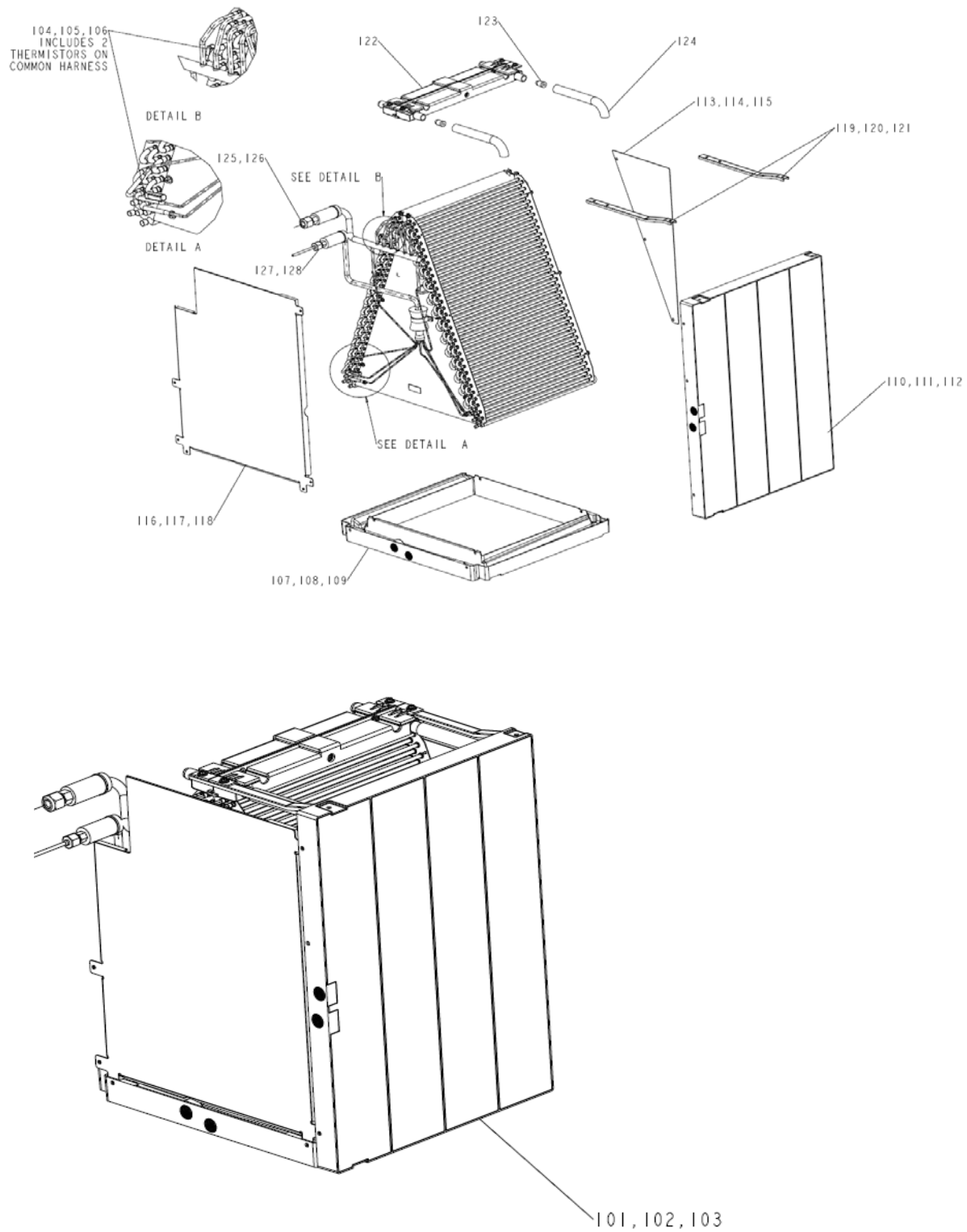
PVA-A12, 18, 24, 30, 36, 42AA7

No.	Part No.	Part Name	Spec.	PVA-A12AA7	PVA-A18AA7	PVA-A24AA7	PVA-A30AA7	PVA-A36AA7	PVA-A42AA7	PVA-A12AA7-1	PVA-A18AA7-1	PVA-A24AA7-1	PVA-A30AA7-1	PVA-A36AA7-1	PVA-A42AA7-1	Dwg. No.	Notes for models	Revision info.
401	U41 001 638	FRONT PANEL ELECTRICAL S		1	1											PA00C545G01		
402	U41 002 638	FRONT PANEL ELECTRICAL M				1	1									PA00C545G02		
403	U41 003 638	FRONT PANEL ELECTRICAL L						1	1							PA00C545G03		
404	U41 001 639	FRONT PANEL HEX S		1	1											PA00B097G01		
405	U41 002 639	FRONT PANEL HEX M				1	1									PA00B097G02		
406	U41 003 639	FRONT PANEL HEX L						1	1							PA00B097G03		
407	U41 001 637	FRONT PANEL BLOWER S		1	1											PA00C541G01		
408	U41 002 637	FRONT PANEL BLOWER M				1	1									PA00C541G02		
409	U41 003 637	FRONT PANEL BLOWER L						1	1							PA00C541G03		
410	U41 001 636	FRONT PANEL FILTER S		1	1											PA00C251G01		
411	U41 002 636	FRONT PANEL FILTER M				1	1									PA00C251G02		
412	U41 003 636	FRONT PANEL FILTER L						1	1							PA00C251G03		
413	U41 001 635	PIPE/DRAIN PANEL S		1	1											PA00C236G01		
414	U41 002 635	PIPE/DRAIN PANEL M				1	1									PA00C236G02		
415	U41 003 635	PIPE/DRAIN PANEL L						1	1							PA00C236G03		
416	U41 004 635	PIPE PANEL		1	1	1	1	1	1							PA00D164G01		
417	U41 005 635	DRAIN PANEL		2	2	2	2	2	2							PA00D162G01		
418	U41 004 500	FILTER-PLASTIC S		1	1					1	1					PA35B051G01	16X20	
419	U41 005 500	FILTER-PLASTIC M				1	1					1	1			PA35B052G01	20X20	
420	U41 006 500	FILTER-PLASTIC L						1	1					1	1	PA35B053G01	24X20	
421	U41 001 087	PLASTIC THUMBSCREW		2	2	2	2	2	2	2	2	2	2	2	2	PA12D179H01	MSX35	
422	U41 001 086	COIL BRACKET		1	1	2	2	2	2	1	1	2	2	2	2	PA00D163G01		
423	U41 002 087	SCREW MSX40				4	4	4	4				4	4	4	PA12D177H01		
427	U41 003 642	CABINET RIGHT S		1	1											PA00C557G01	*	
428	U41 002 642	CABINET RIGHT M				1	1									PA00C557G02	*	
429	U41 001 642	CABINET RIGHT L						1	1							PA00C557G03	*	
430	U41 003 641	CABINET LEFT S		1	1											PA00C558G01	**	
431	U41 002 641	CABINET LEFT M				1	1									PA00C558G02	**	
432	U41 001 641	CABINET LEFT L						1	1							PA00C558G03	**	
433	U41 003 643	TOP PANEL S		1	1											PA00B096G01		
434	U41 002 643	TOP PANEL M				1	1									PA00B096G02		
435	U41 001 643	TOP PANEL L						1	1							PA00B096G03		
436	U41 003 640	CABINET BACK S		1	1											PA00C556G01		
437	U41 002 640	CABINET BACK M				1	1									PA00C556G02		
438	U41 001 640	CABINET BACK L						1	1							PA00C556G03		
439	U41 B01 638	FRONT PANEL ELECTRICAL S								1	1					PA00C545G04	Black ZAM	
440	U41 B02 638	FRONT PANEL ELECTRICAL M										1	1			PA00C545G05	Black ZAM	
441	U41 B03 638	FRONT PANEL ELECTRICAL L												1	1	PA00C545G06	Black ZAM	
442	U41 B01 639	FRONT PANEL HEX S								1	1					PA00B097G04	Black ZAM	
443	U41 B02 639	FRONT PANEL HEX M										1	1			PA00B097G05	Black ZAM	
444	U41 B03 639	FRONT PANEL HEX L												1	1	PA00B097G06	Black ZAM	
445	U41 B01 637	FRONT PANEL BLOWER S								1	1					PA00C541G04	Black ZAM	
446	U41 B02 637	FRONT PANEL BLOWER M										1	1			PA00C541G05	Black ZAM	
447	U41 B03 637	FRONT PANEL BLOWER L												1	1	PA00C541G06	Black ZAM	
448	U41 B01 636	FRONT PANEL FILTER S								1	1					PA00C251G04	Black ZAM	
449	U41 B02 636	FRONT PANEL FILTER M										1	1			PA00C251G05	Black ZAM	
450	U41 B03 636	FRONT PANEL FILTER L												1	1	PA00C251G06	Black ZAM	
451	U41 B01 635	PIPE/DRAIN PANEL S								1	1					PA00C236G04	Black ZAM	
452	U41 B02 635	PIPE/DRAIN PANEL M										1	1			PA00C236G05	Black ZAM	
453	U41 B03 635	PIPE/DRAIN PANEL L												1	1	PA00C236G06	Black ZAM	
454	U41 B04 635	PIPE PANEL								1	1	1	1	1	1	PA00D164G02	Black ZAM	
455	U41 B05 635	DRAIN PANEL								2	2	2	2	2	2	PA00D162G02	Black ZAM	
456	U41 B03 642	CABINET RIGHT S								1	1					PA00C557G04	Black ZAM *	
457	U41 B02 642	CABINET RIGHT M										1	1			PA00C557G05	Black ZAM *	
458	U41 B01 642	CABINET RIGHT L												1	1	PA00C557G06	Black ZAM *	
459	U41 B03 641	CABINET LEFT S								1	1					PA00C558G04	Black ZAM **	
460	U41 B02 641	CABINET LEFT M										1	1			PA00C558G05	Black ZAM **	
461	U41 B01 641	CABINET LEFT L												1	1	PA00C558G06	Black ZAM **	
462	U41 B03 643	TOP PANEL S								1	1					PA00B096G04	Black ZAM	
463	U41 B02 643	TOP PANEL M										1	1			PA00B096G05	Black ZAM	
464	U41 B01 643	TOP PANEL L												1	1	PA00B096G06	Black ZAM	
465	U41 B03 640	CABINET BACK S								1	1					PA00C556G04	Black ZAM	
466	U41 B02 640	CABINET BACK M										1	1			PA00C556G05	Black ZAM	
467	U41 B01 640	CABINET BACK L												1	1	PA00C556G06	Black ZAM	

\* The motor harness is pre-installed in the Cabinet Right panel.

\*\* The return air thermistor harness is pre-installed in the Cabinet Left panel.

## 2. HEX ASSEMBLY PARTS

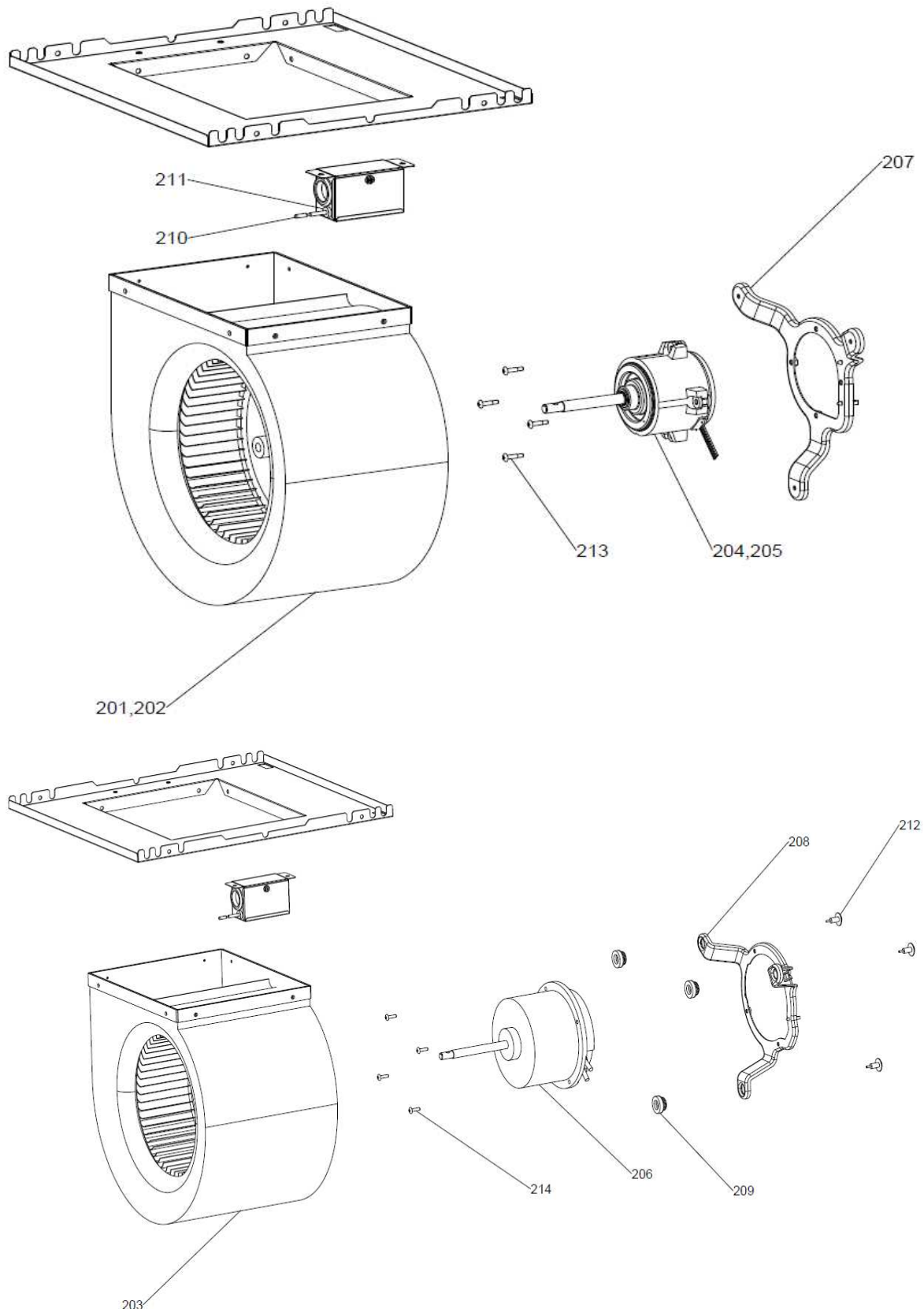


PVA-A12, 18, 24, 30, 36, 42AA7

No.	Part No.	Part Name	Spec.	PVA-A12AA7 PVA-A12AA7-1	PVA-A18AA7 PVA-A18AA7-1	PVA-A24AA7 PVA-A24AA7-1	PVA-A30AA7 PVA-A30AA7-1	PVA-A36AA7 PVA-A36AA7-1	PVA-A42AA7 PVA-A42AA7-1	Dwg. No.	Notes for models	Revision info.
101	U41 018 480	HEAT EXCHANGER A12		1	1					PA00B026B01	Includes all hex parts	
102	U41 016 480	HEAT EXCHANGER A30				1	1			PA00B101B01	Includes all hex parts	
103	U41 017 480	HEAT EXCHANGER A42						1	1	PA00B102B01	Includes all hex parts	
104	U41 003 200	THERMISTOR		1	1					KB71B945H05		
105	U41 004 200	THERMISTOR				1	1			KB71B945H06		
106	U41 005 200	THERMISTOR						1	1	KB71B945H07		
107	U41 006 529	DRAIN PAN ASSY LOWER S		1	1					PA00B098G01		
108	U41 007 529	DRAIN PAN ASSY LOWER M				1	1			PA00B098G02		
109	U41 008 529	DRAIN PAN ASSY LOWER L						1	1	PA00B098G03		
110	U41 009 529	DRAIN PAN ASSY SIDE S		1	1					PA00C248G01		
111	U41 010 529	DRAIN PAN ASSY SIDE M				1	1			PA00C248G02		
112	U41 011 529	DRAIN PAN ASSY SIDE L						1	1	PA00C248G03		
113	U41 001 668	PLATE GUIDE REAR S		1	1					PA00D171G01		
114	U41 002 668	PLATE GUIDE REAR M				1	1			PA00D171G02		
115	U41 003 668	PLATE GUIDE REAR L						1	1	PA00D171G03		
116	U41 004 668	PLATE GUIDE FRONT S		1	1					PA00C242G01		
117	U41 005 668	PLATE GUIDE FRONT M				1	1			PA00C242G02		
118	U41 006 668	PLATE GUIDE FRONT L						1	1	PA00C242G03		
119	U41 001 662	SIDE PAN BRACKET S		1	1					PA02C077H01		
120	U41 002 662	SIDE PAN BRACKET M				2	2			PA02C078H01		
121	U41 003 662	SIDE PAN BRACKET L						2	2	PA02C079H01		
122	U41 012 529	DRAIN PAN ASSY TOP		2	2	2	2	2	2	PA00C279G01		
123	U41 002 558	PLUG-TOP DRAIN PAN		4	4	4	4	4	4	C126C778H17		
124	U41 001 525	HOSE-TOP DRAIN PAN		2	2	2	2	2	2	PA27D214H02		
125	U41 003 122	NUT FLARE 1/2F		1	1					BG12S008H02		
126	U41 001 122	NUT FLARE 5/8				1	1	1	1	BG12S826H03		
127	U41 004 122	NUT FLARE 1/4		1	1					Z211A143H01		
128	U41 002 122	NUT FLARE 3/8				1	1	1	1	Z211A143H06		



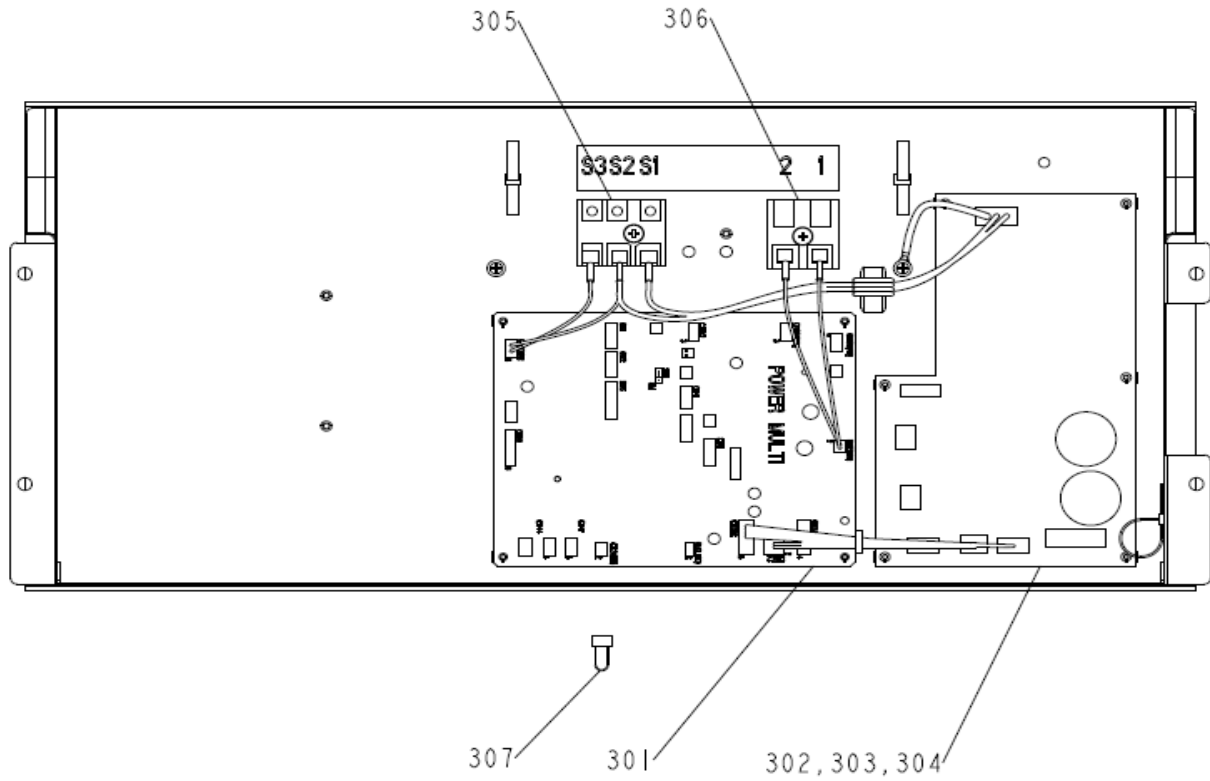
### 3. BLOWER PARTS



PVA-A12, 18, 24, 30, 36, 42AA7

No.	Part No.	Part Name	Spec.	PVA-A12AA7 PVA-A12AA7-1	PVA-A18AA7 PVA-A18AA7-1	PVA-A24AA7 PVA-A24AA7-1	PVA-A30AA7 PVA-A30AA7-1	PVA-A36AA7 PVA-A36AA7-1	PVA-A42AA7 PVA-A42AA7-1	Dwg. No.	Notes for models	Revision info.
201	U41 008 129	FAN CASE S		1	1					PA00C249G01		
202	U41 009 129	FAN CASE M				1	1			PA00C249G02		
203	U41 010 129	FAN CASE L						1	1	PA00C249G03		
204	U41 003 128	BLOWER MOTOR S		1	1					PA61B071H02		
205	U41 004 128	BLOWER MOTOR M				1	1			PA61B072H02		
206	U41 005 128	BLOWER MOTOR L						1	1	PA61B073H02		
207	U41 001 130	MOTOR BRACKET S M		1	1	1	1			PA00D167G02		
208	U41 002 130	MOTOR BRACKET L						1	1	PA00D168G01		
209	U41 103 104	RUBBER GROMMET						3	3	PA32D195H01		
210	U41 001 287	THERMISTOR RETURN AIR		1	1	1	1	1	1	PA71C160H01		
211	U41 002 104	BUSHING SRB-R-2		1	1	1	1	1	1	KB32K138H01		
212	U41 003 087	SCREW SPECIAL						3	3	PA12D193H01		
213	U41 005 087	BOLT MOTOR (S, M)		4	4	4	4			PA12D178H01		
214	U41 006 087	BOLT MOTOR (L)						4	4	PA12D194H01		

## 4. CONTROL BOX PARTS

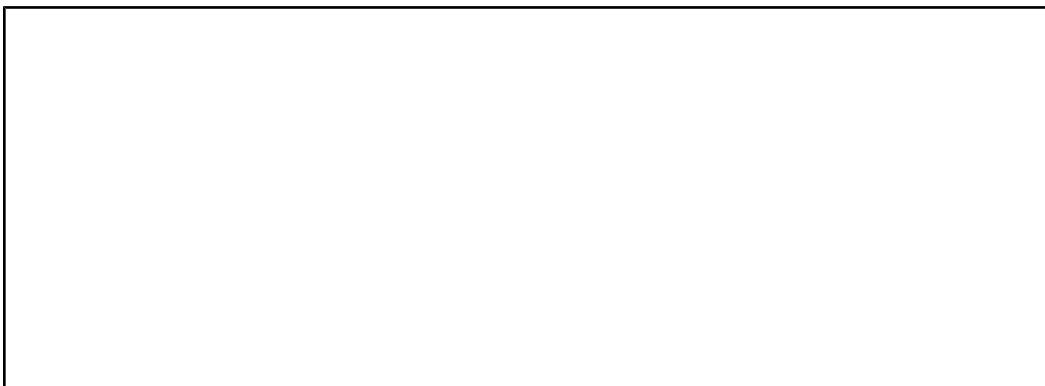


No.	Part No.	Part Name	Spec.	PVA-A12AA7	PVA-A12AA7-1	PVA-A18AA7	PVA-A18AA7-1	PVA-A24AA7	PVA-A24AA7-1	PVA-A30AA7	PVA-A30AA7-1	PVA-A36AA7	PVA-A36AA7-1	PVA-A42AA7	PVA-A42AA7-1	Dwg. No.	Notes for models	Revision info.
301	U41 009 280	PCA ASSY PVA/MVZ		1	1	1	1	1	1	1	1	1	1	1	1	PA95D226G04	INCLUDES NO.306	
302	U41 005 280	PCA BOARD POWER		1	1											KE95B740F04		
303	U41 006 280	PCA BOARD POWER						1	1							KE95B740F05		
304	U41 006 281	PCA BOARD POWER										1	1			KE95B740F06		
305	U41 004 246	TERMINAL BLOCK ASSY		1	1	1	1	1	1	1	1	1	1	1	1	BH00C267G02		
306	U41 003 246	TERMINAL BLOCK		1	1	1	1	1	1	1	1	1	1	1	1	BG00R200G62		
307	U41 001 G08	JUMPER CONNECTOR		1	1	1	1	1	1	1	1	1	1	1	1	BB00M192G08	CN4F	

---

This product is designed and intended for use in the residential, commercial and light-industrial environment.

Please be sure to put the contact address/telephone number on this manual before handing it to the customer.

A large, empty rectangular box with a thin black border, intended for the user to write the contact address and telephone number before handing the manual to the customer.

**mitsubishi** **ELECTRIC US, INC.**

[www.mitsubishielectric-usa.com](http://www.mitsubishielectric-usa.com)

Toll Free: 800-433-4822